



The Road To TEV

Joao Pequeno - CERN Media Lab

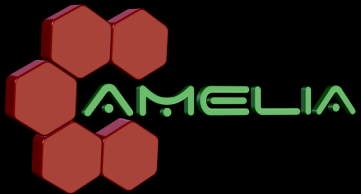
February 18 2015

It Started With

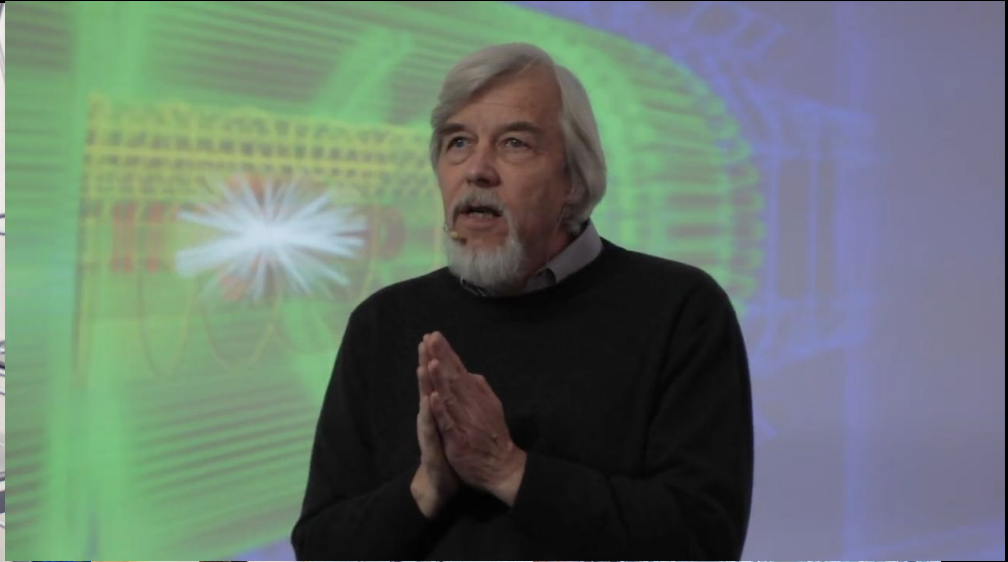
CAMELIA



Info Media



Cross-platform Atlas Multimedia Educational Lab
for Interactive Analysis



CAMELIA @ places

The TEV Team



Joao Antunes Pequena

Jenny Rompa

Ana Trisovic (LHCb)

Marta Panuszewska (TOTEM)

Jeremi Niedziela (ALICE)

Tom McCauley (CMS)



Event Manager

Data Translator

ATLAS

CMS

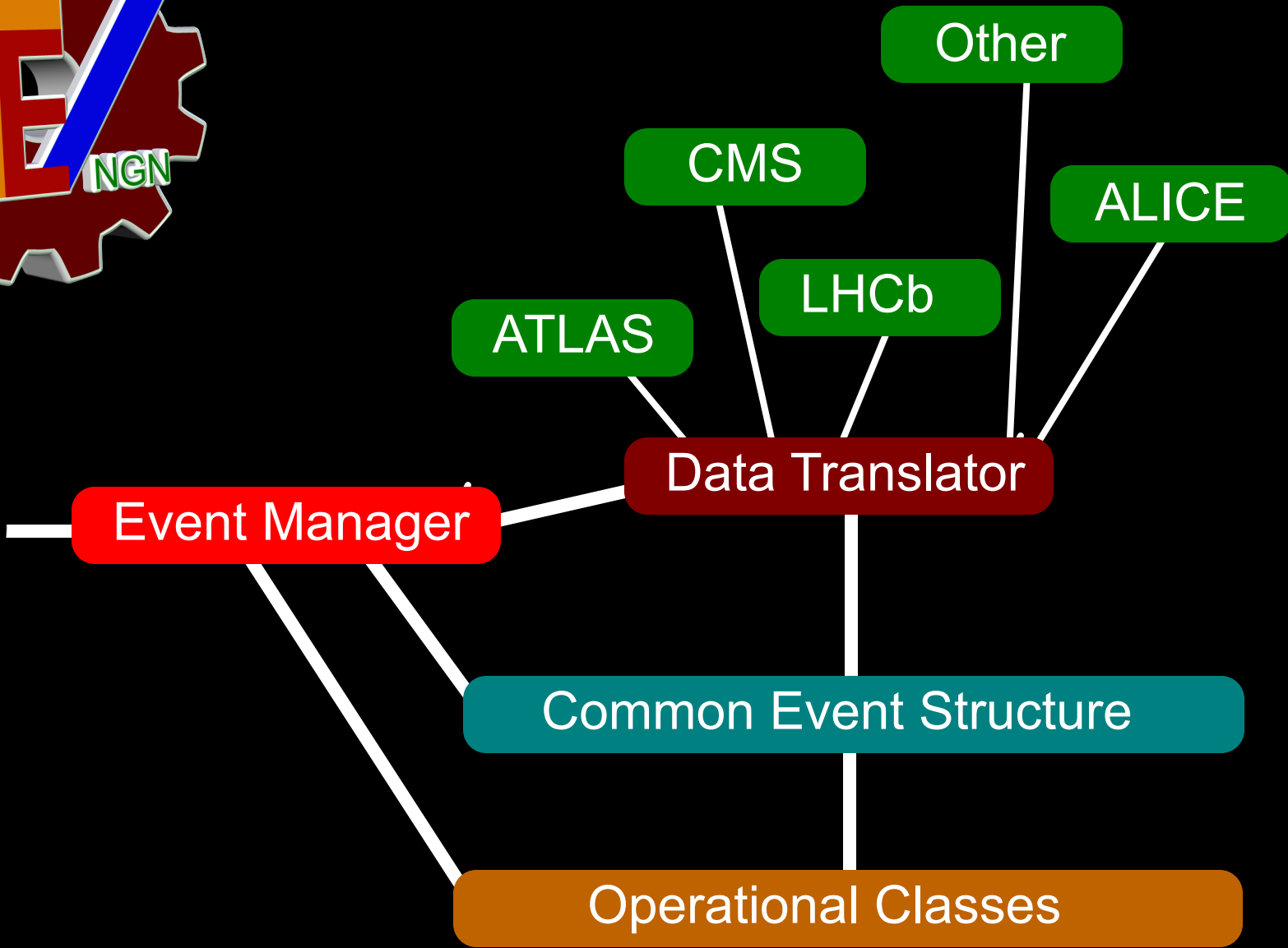
LHCb

Other

ALICE

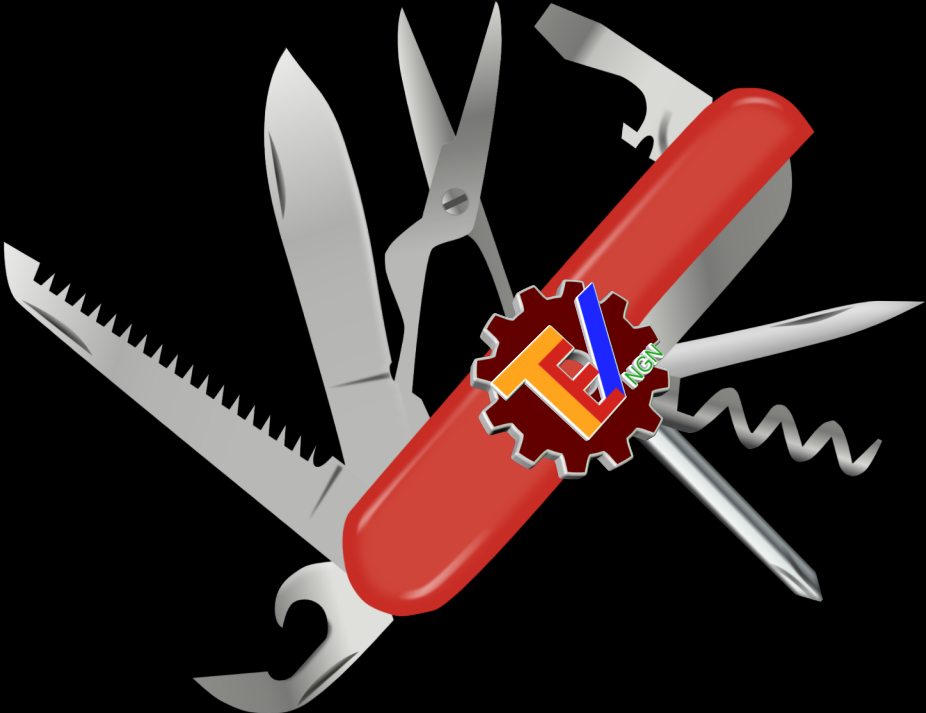
Common Event Structure

Operational Classes



TEV is an

All-In-One Tool



Made with Unity



GUI

Y

Z



X

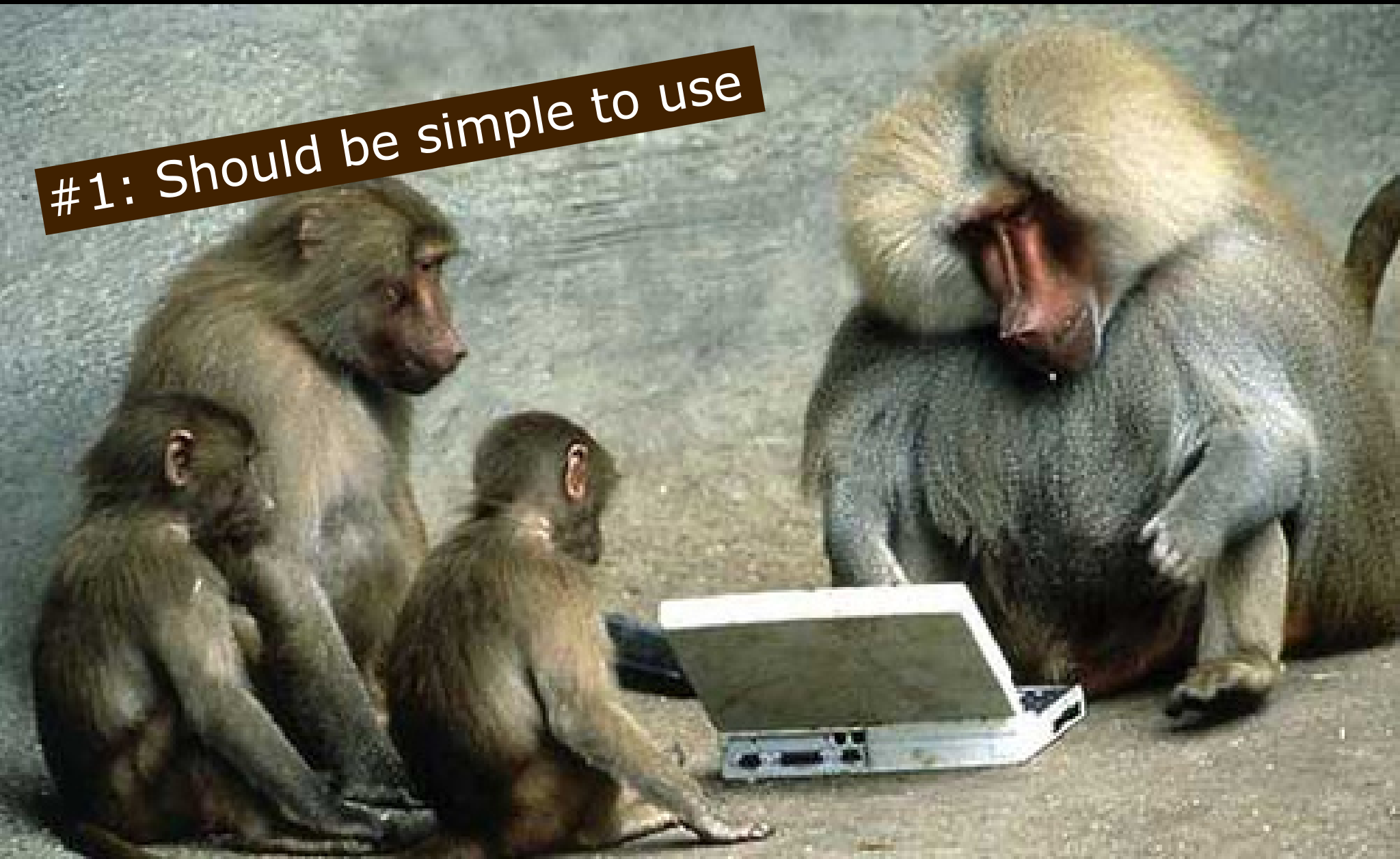


TM



Developed having in mind four principles:

#1: Should be simple to use



* Actual Beta Testers

#2: Should be Visually Appealing



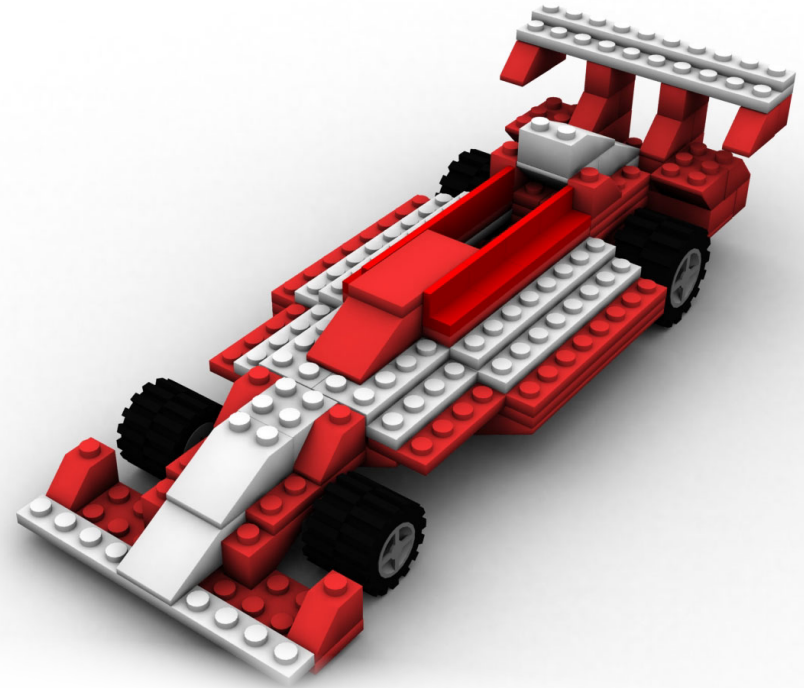
#3: Engage users the right way



VS



#4: Flexible. Usable in many scenarios



We already have an Alpha

Engine

Works and is ready to grow



Being Used In The



© Place Royale / RTV Belgium

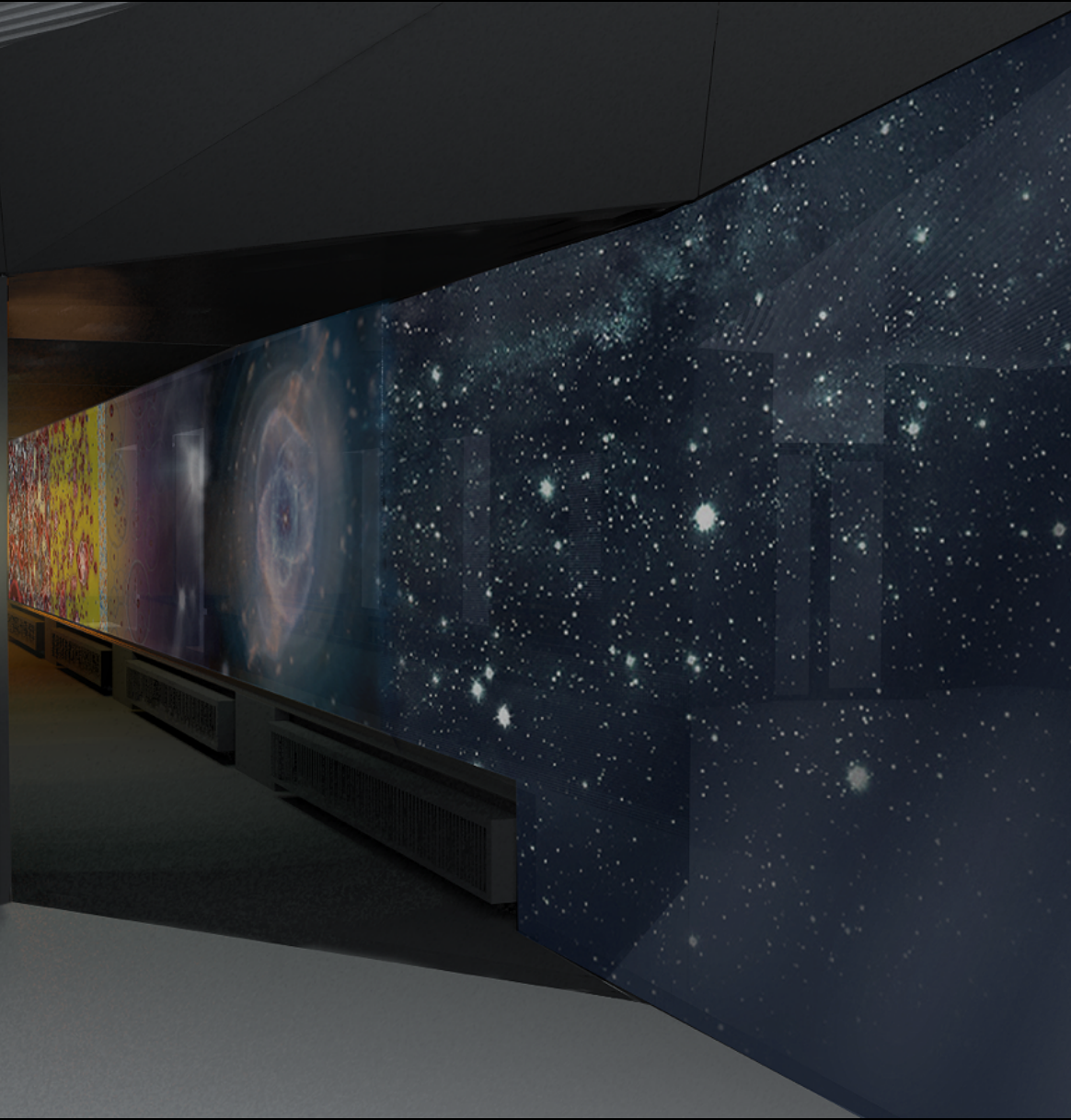
LHC Interactive Tunnel



And Soon...

In The New

microcosm





The Road Ahead

For the App

ROOT integration



Cloud processing of data



Custom datasets



Teleport



Slides and Notes

The chalkboard is filled with handwritten mathematical notes and diagrams. Key sections include:

- Left side:** Calculus and physics formulas such as $\frac{d}{dt}(x^2) = 2x \frac{dx}{dt}$, $\frac{d}{dt}(x^3) = 3x^2 \frac{dx}{dt}$, and $\frac{d}{dt}(x^n) = nx^{n-1} \frac{dx}{dt}$. It also features a diagram of a sphere with a cone and a vector \vec{v} .
- Center:** A diagram of a circular path with a central point and several vectors radiating outwards. Below it, a diagram shows a circular loop with a magnetic field vector \vec{B} pointing into the page and a current vector \vec{I} flowing clockwise.
- Right side:** A diagram of a right-angled triangle with a hypotenuse and a vertical side. Next to it, a diagram shows a circular path with a central point and several vectors radiating outwards, similar to the center diagram.

Other visible formulas include $E = mc^2$, $\frac{1}{\mu_0} \nabla \times \vec{B} = \vec{j} + \epsilon_0 \nabla \times \vec{E}$, and $\nabla \cdot \vec{E} = \frac{\rho}{\epsilon_0}$.



Guided Tours



A top-down photograph showing five hands of different skin tones arranged in a circle on a white, slightly wrinkled fabric surface. The hands are positioned such that their fingers and thumbs touch or are close to each other, forming a pentagonal shape. In the center of this arrangement, the word "Crowdsourcing" is written in white, sans-serif font inside a dark red, slightly tilted rectangular box.

Crowdsourcing

Treasure Hunting



We're Working On It





That's all Folks!