

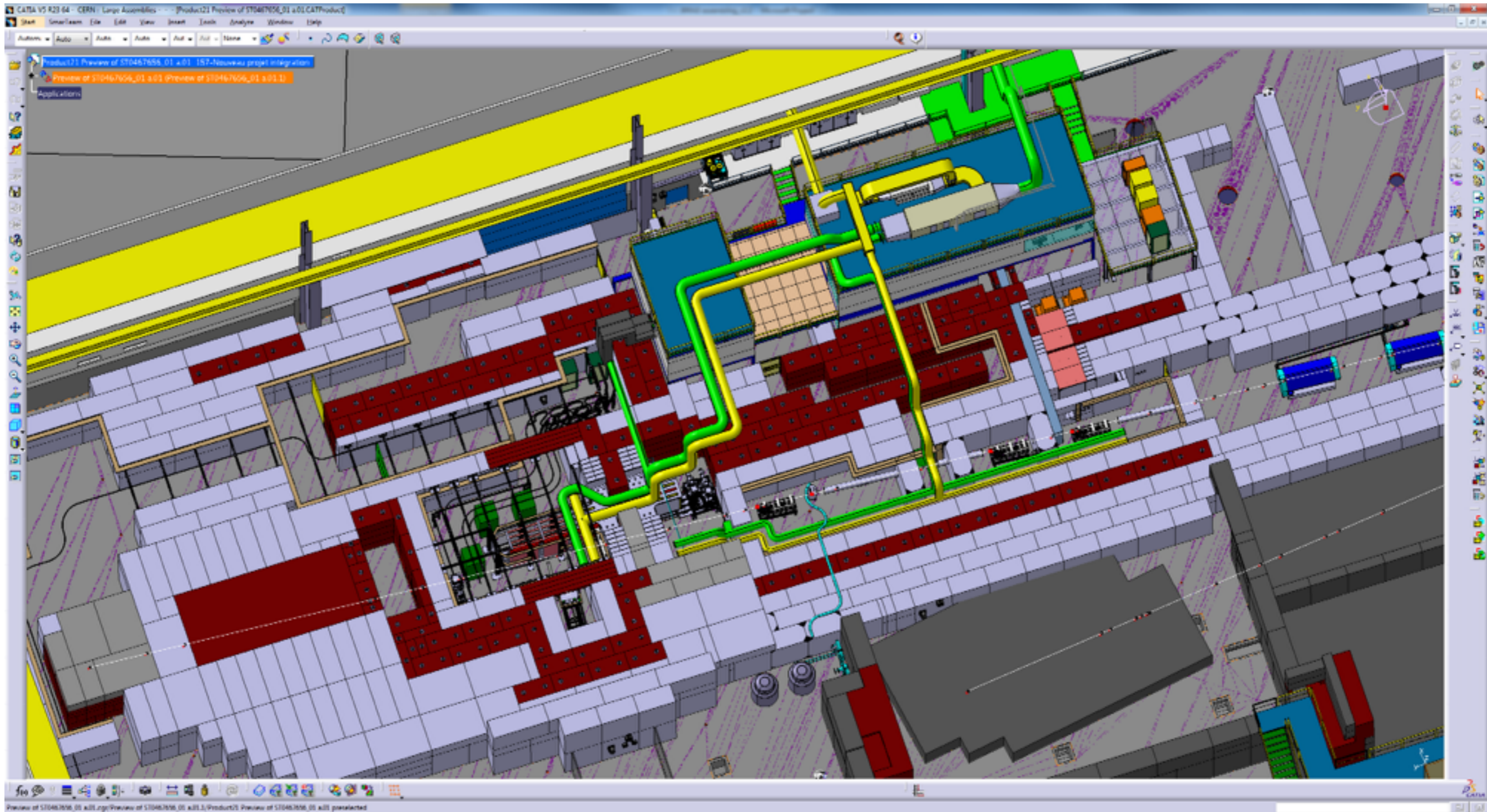


# East & North Area Restart 2014

---



# PS East Area - New IRRAD Facility



L. Gatignon, M. Lazzaroni - EN/MEF

# PS East Area - New IRRAD Facility



- The installation of the lateral shielding walls for the new Irradiation facilities is well under way. Infrastructure installation is starting.
- The delivery of the new control rooms is delayed by two weeks.



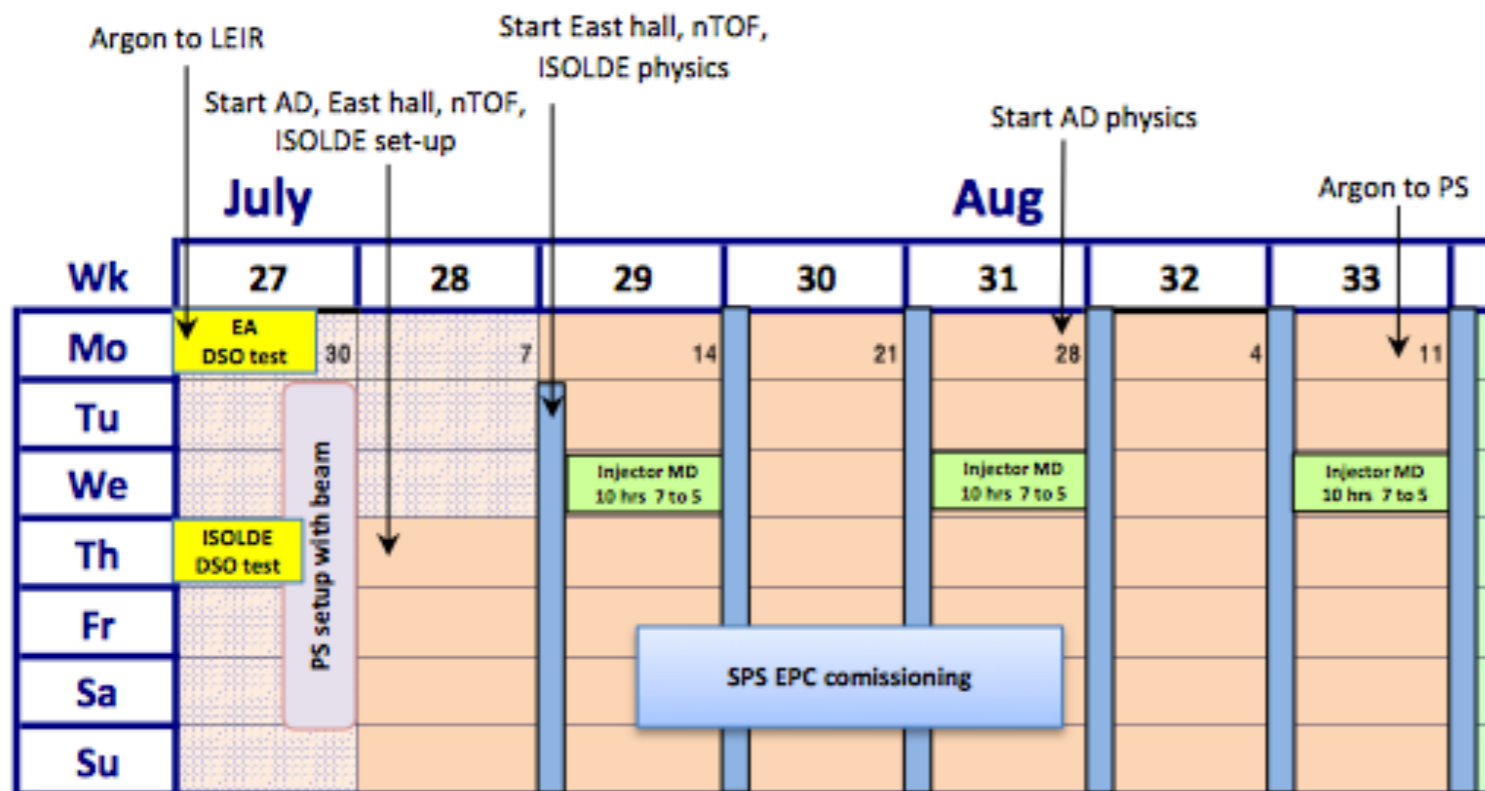
- It should still be possible to have the installation for the irradiation facility complete for the start-up, but the ventilation will not be operational before October.
- The plan to commission the facility at low intensity and with minimal number of cycles until the ventilation is available.

L. Gatignon, M. Lazzaroni - EN/MEF



# PS East Area - Test beams & Restart Planning

- ▶ For the test beams and CLOUD, there are fewer changes. The T9 area will be reconfigured somewhat (side wall and concrete platform) as a consequence of the changed shielding on the IRRAD side.
- ▶ The SMH01 splitter and F61 stoppers could not be replaced due to an issue with a vacuum flange at the exit, but **the old stoppers have been refurbished and put back.**
- ▶ The consolidation of the secondary beam stoppers will be done in situ, in the following weeks/month.
- ▶ Two broken magnets in F61N (DVT01 and BHZ01) have been repaired and reinstalled. A magnet patrol in the primary area will be done in May.



- ▶ Still on track for restart in **Mid July** (with ventilation restrictions for IRRAD).
  - ▶ 10/07 beam set-up
  - ▶ 15/07 Physics restart

# North Area Shutdown Activities

## TCC2/TDC2 Consolidation works

S. Evrard - EN/MEF



- ▶ TAX repairs
- ▶ Primary Target & BI renovation
- ▶ Maintenance of secondary beam vacuum systems



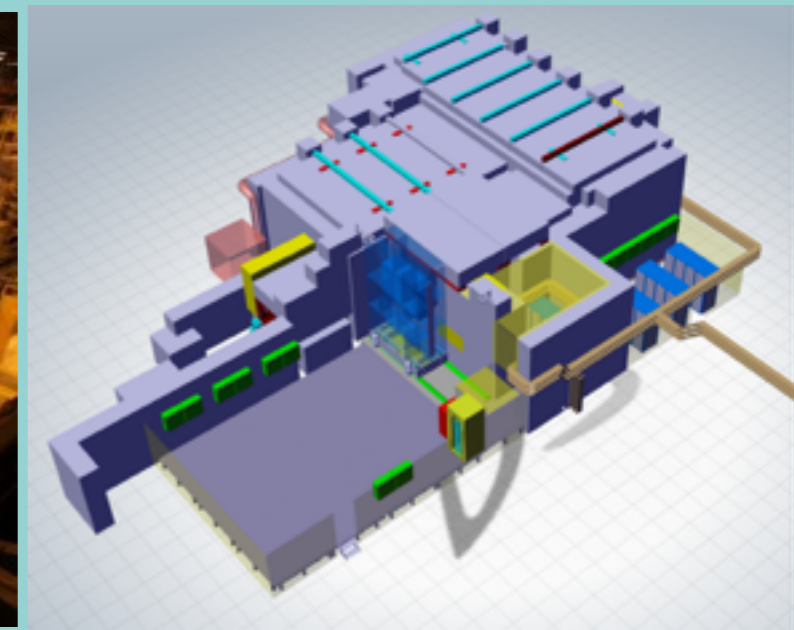
## K12/NA62 Installation



L. Gatignon - EN/MEF

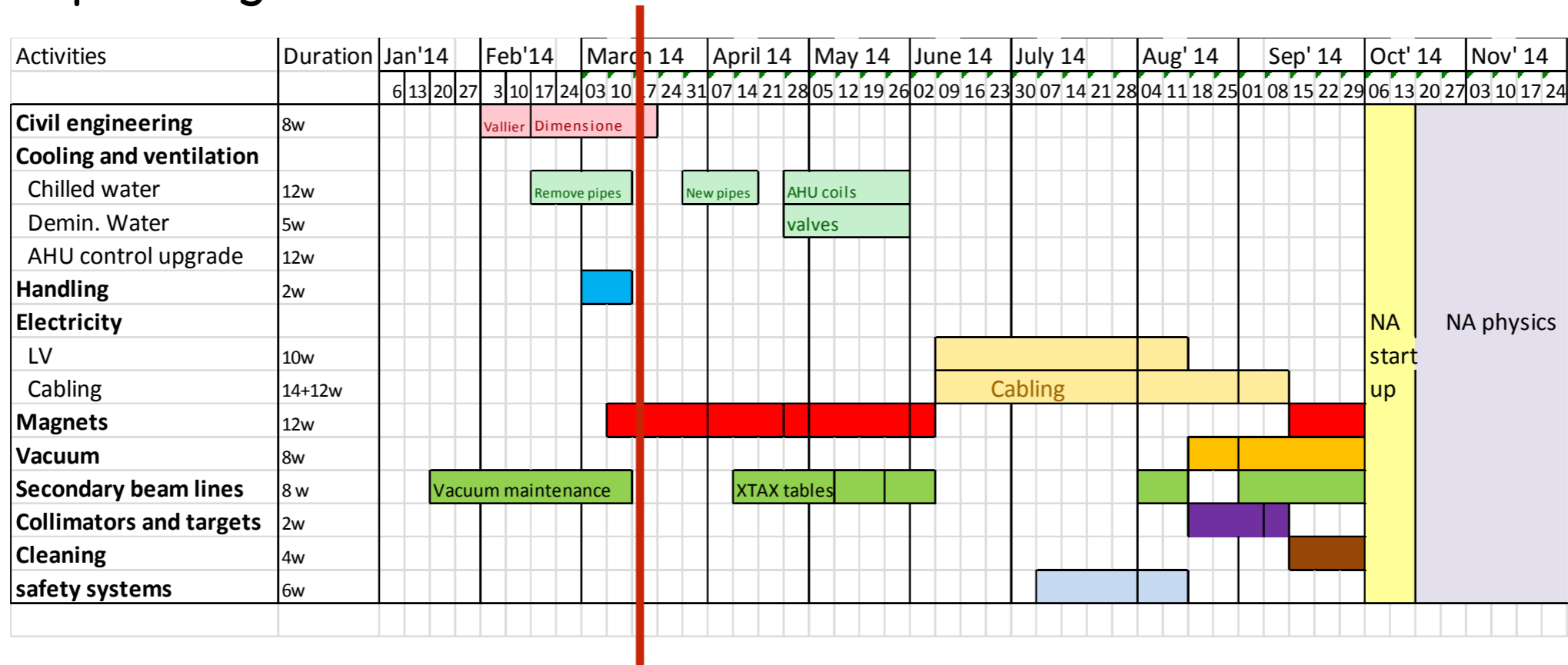
## GIF @ H4

A. Fabich - EN/MEF



# TCC2/TDC2 Consolidation Activities

## ▸ Overall planning



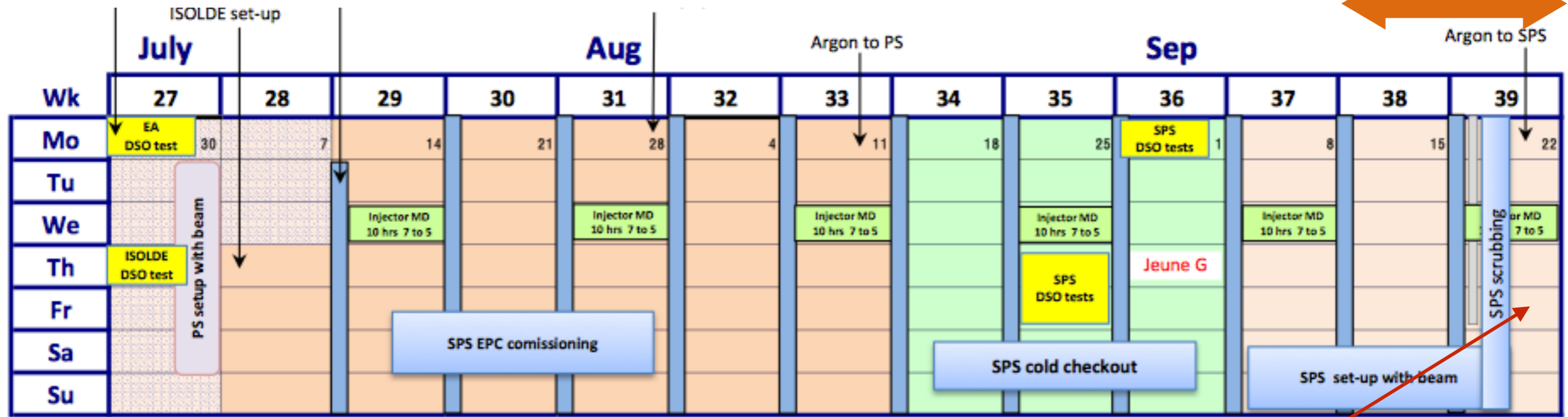
## ▸ Works progress well

- Equipment removed from splitter area in view of cabling activities
- Schedule for EL interventions defined, detailed work-dose planing estimate ingoing, ==> determine if ALARA Level-III, reserved ALARA Committee 12/5



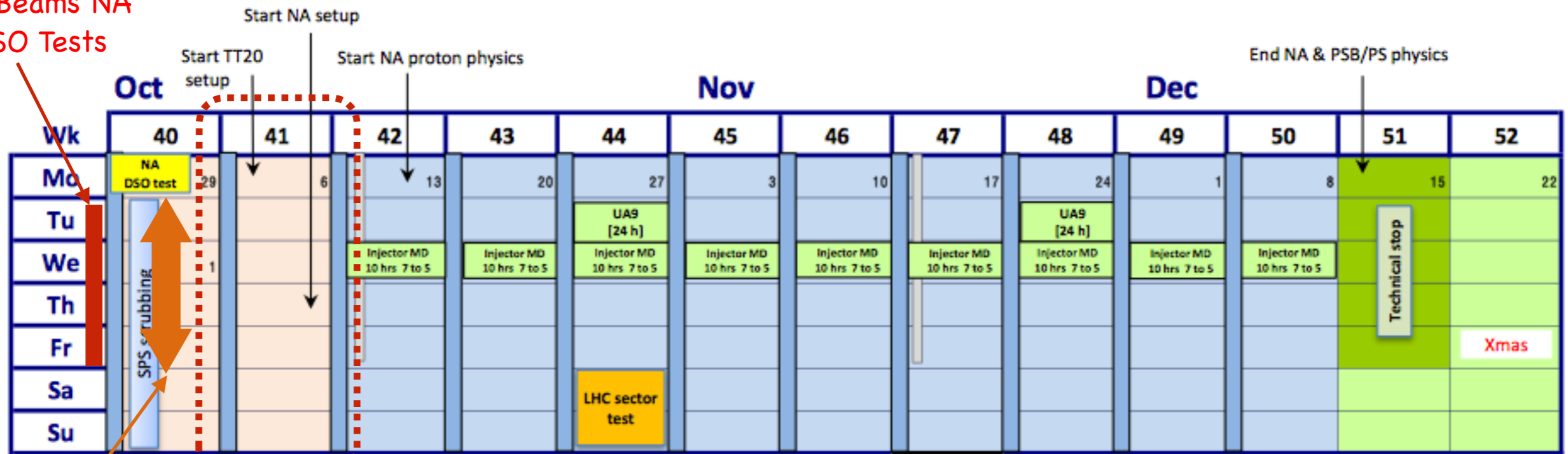
# SPS North Area Startup Schedule

Magnet patrol  
North Area



End of TCC2 works

SecBeams NA  
DSO Tests



Magnet patrol

TCC2/TDC2 HiRadMat: possible beam request

PS complex physics