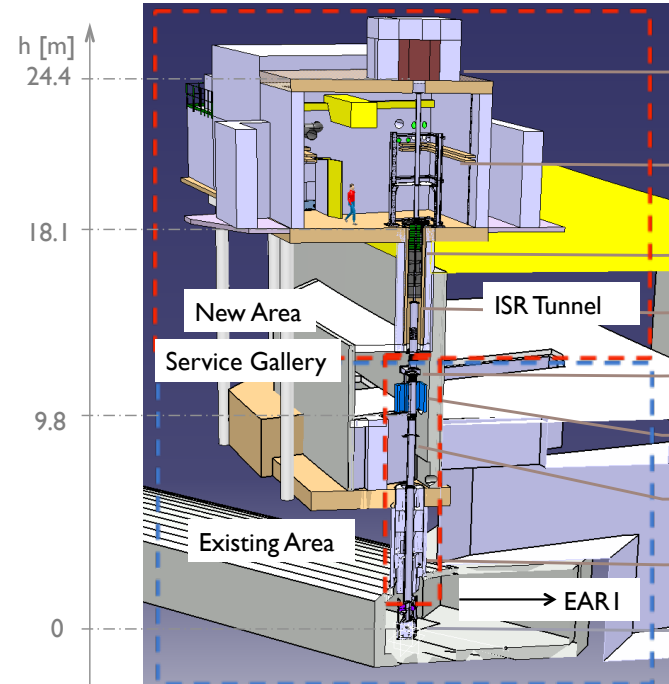
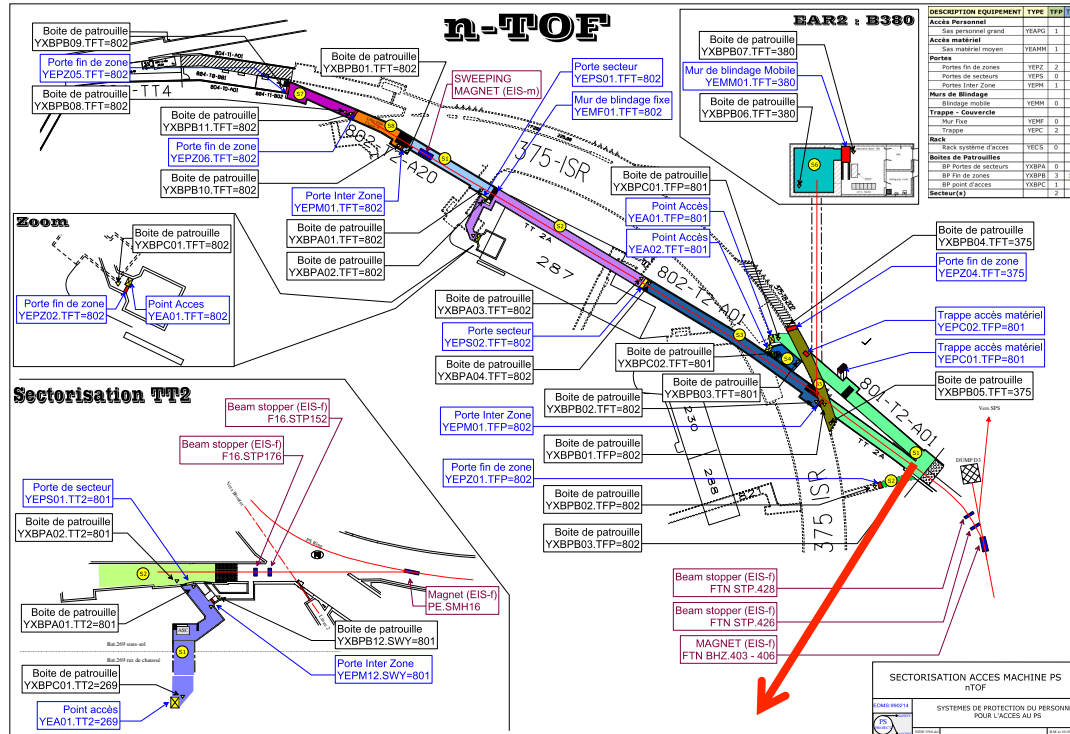


n_TOF startup after LS1

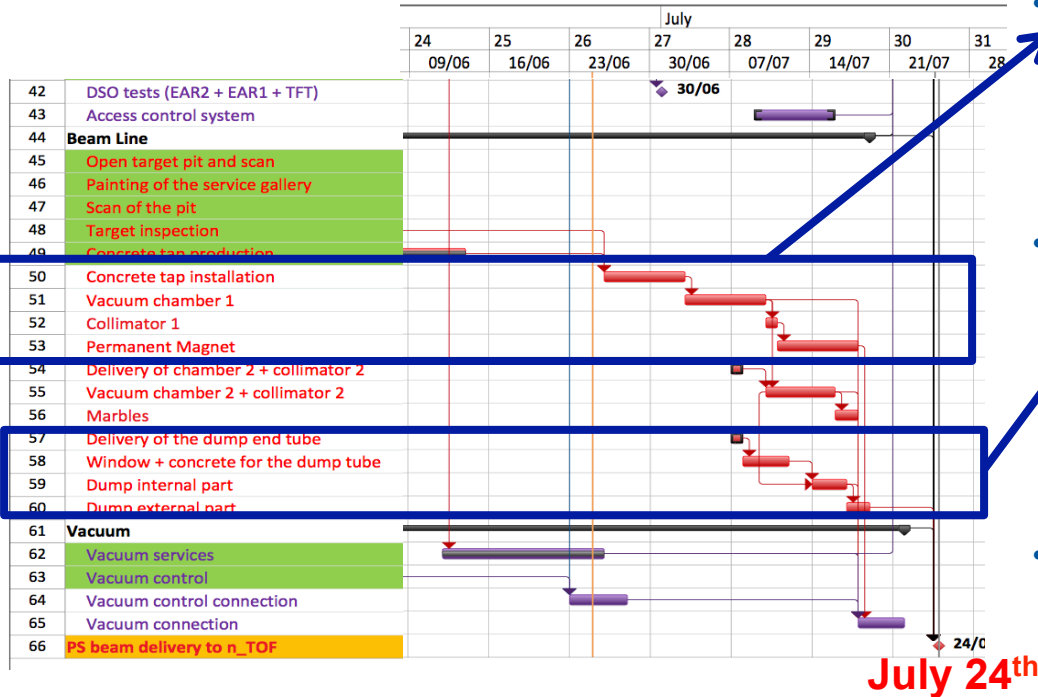
S. Montesano (EN/STI)



n_TOF layout



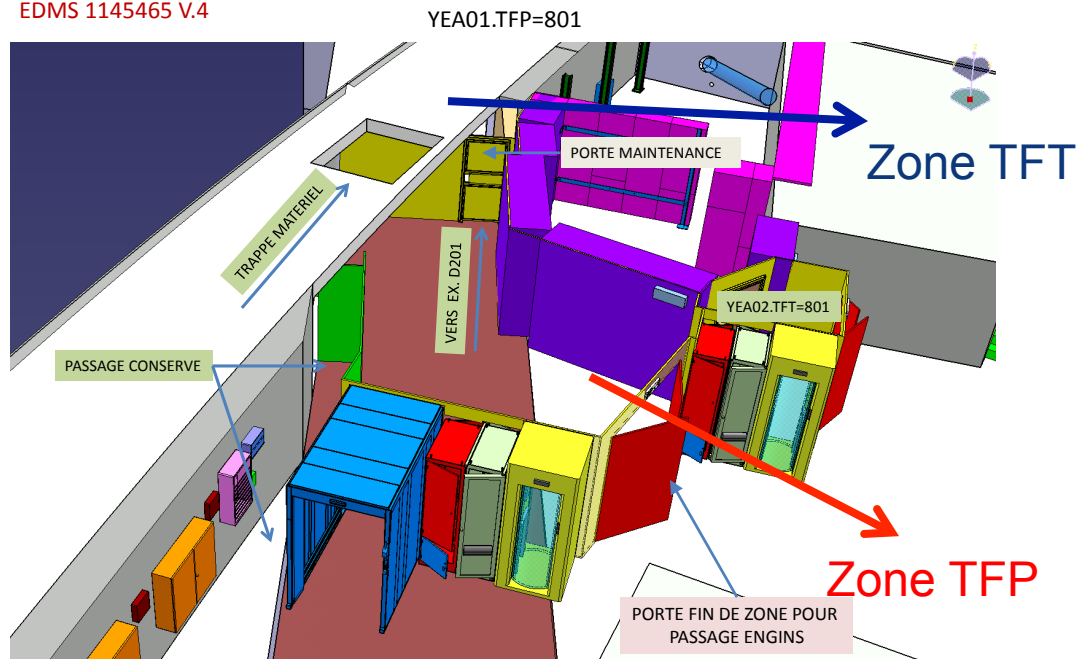
EAR2 beam line installation



- Installation of part of the beam line requires access to TFP (see next slide)
 - until July 15th.
- Delivery of beam dump components in week 28
 - beam dump installation in week 29 (completed on July 18th)
 - vacuum connection and test on July 21st.
- The n_TOF Collaboration would like to take beam starting on July 24th (week 30)

EAR2 beam line installation

EDMS 1145465 V.4



6 DECEMBRE 2012

- Installation of the bottom part of the beam line in week 26—29:
 - the material must pass by the hatch that opens on the TFP zone (using a forklift).
 - the commissioning of the PS requires no access in the TFP zone!
- Solution found thanks to BE/OP + GS/ASE + BE DSO:
 - access system in “maintenance mode”
 - perimeter of the TFP zone (no access) at the maintenance door
 - hatch excluded from the access system chain
- DSO tests for TFT (planned on June 30th) to be rescheduled after July 15th.

EAR1 preparation

- The old experimental area (EAR1) is being prepared for the restarting of the operations:
 - beam line completely reinstalled
 - beam line flushing and vacuum test to be planned
 - ventilation system restarted on June 30th:
 - fix the interface with the access system (required for DSO tests)
 - air tightness of the WSTA to be reestablished
 - cleaning of the WSTA planned on July 1st
 - DSO tests to be planned with the others TFT sectors (after July 15th)
- EAR1 will be ready to take beam well before July 24th.

Conclusion

- The n_TOF Collaboration is looking forward to restart the experimental activities with beam:
 - the preparation of EAR1 is within the schedule;
 - the installation of the beam line for EAR2 has been delayed by about two weeks.
- The desired date for the delivery of the first beam is July 24th.
- DSO tests of the TFT zone must be re-planned before beam delivery.