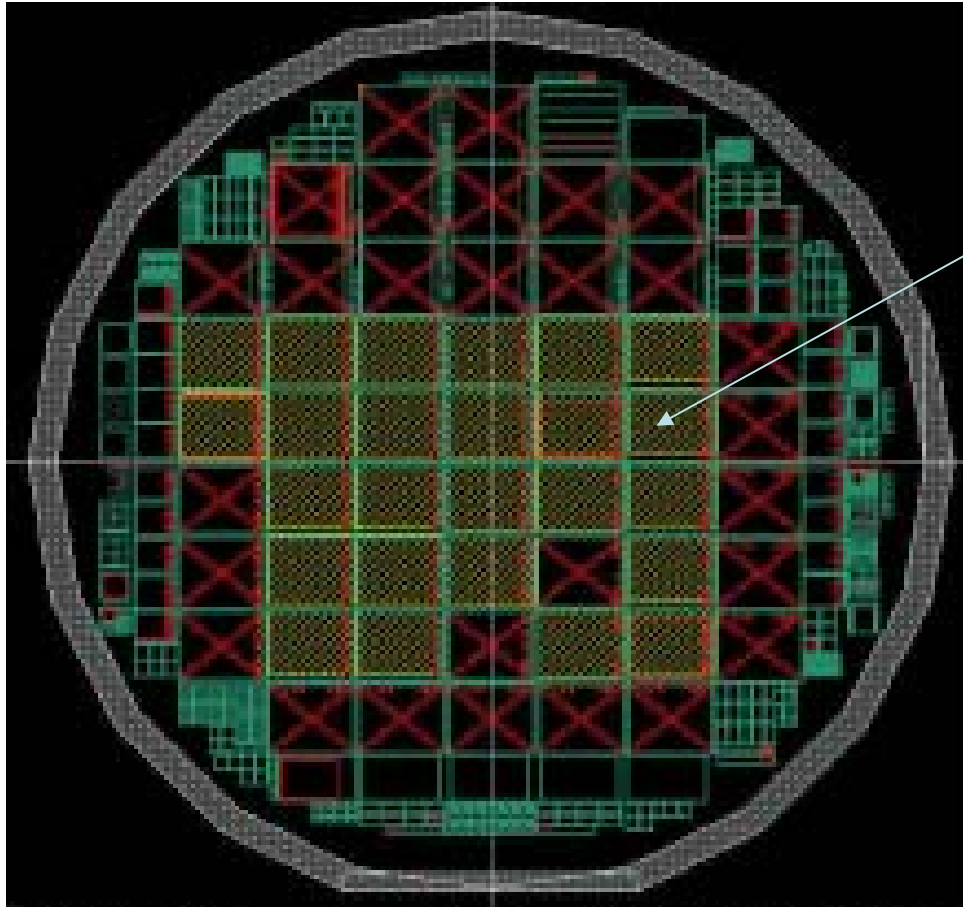


**3D silicon**

**Test Beam Plans**

# 20 detectors bump bonded at IZM - Berlin

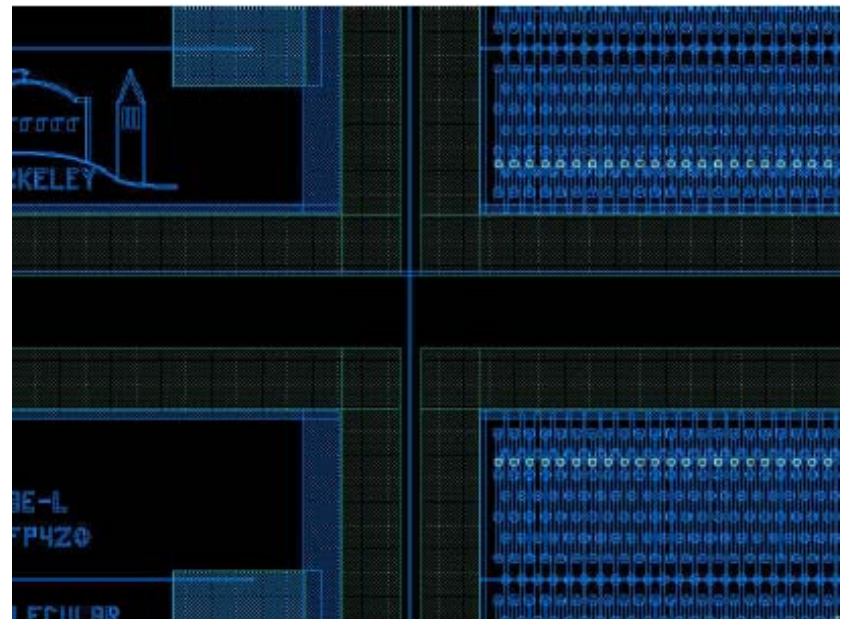
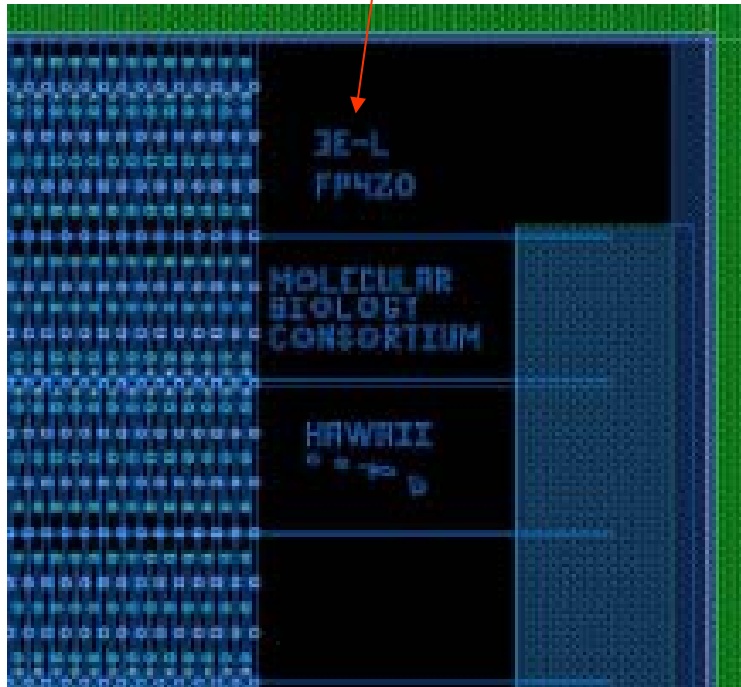


Map of the good detectors

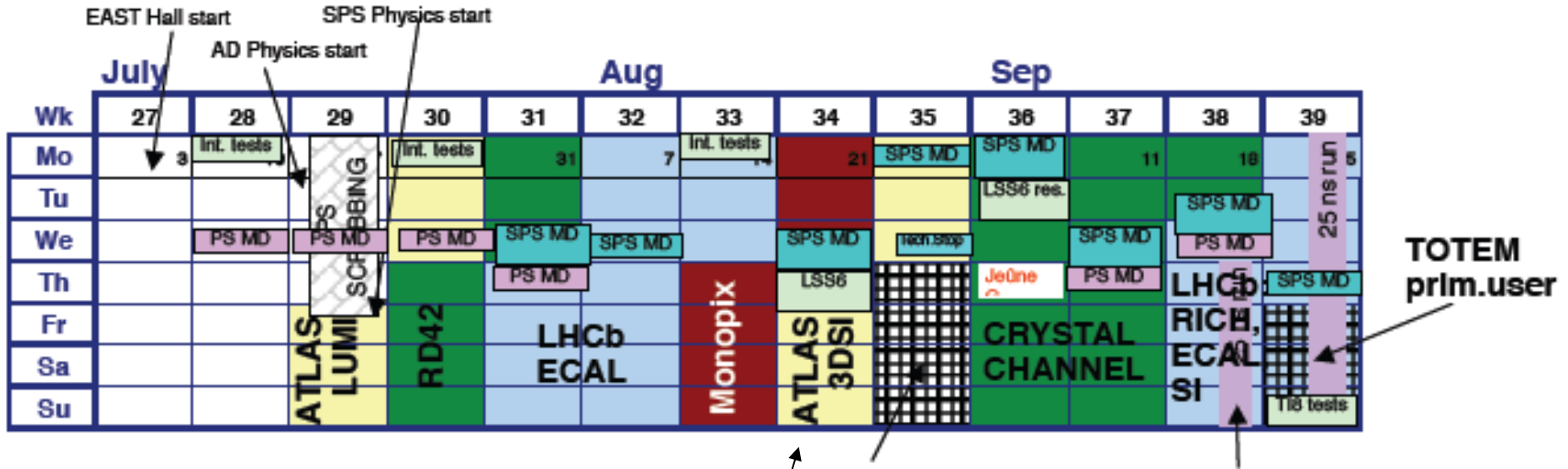
# Detectors' details

FP420 Mark!!

edges



# SpS new schedule



**We are here**

# Test Beam plan

- 20 chips should return to Cern by the end of July to be bench tested
- Dates 25-30 August at SpS H8
- Will use the 'Bonn' telescope
- We will run with some 'parasitic' groups
- There will probably be another pixel run with depfets just before (so we can probably install the week before)
- Manpower : 6-7 FP420 people plus Atlas-Bonn students to help with the telescope and the daq