



ISOLDE

Operational constraints in 2015

Light at the end of the tunnel!

OUTLINE

1-New ISOLDE equipment .Installation and commissioning

2-Restart of LINAC (warm part)

3-HIE commissioning

4-New control room. Design , installation and move

5-New people at ISOLDE (Operation team)

6-Safety. New risks at ISOLDE

7- Other challenges for this year

NEW ISOLDE EQUIPMENT AND CONTROLS. INSTALLATION AND COMMISSIONING

- New FESA classes for moving parts.
SLITS /Clamping and unclamping targets /extraction electrodes. Deflectors
- New gas injection system for the HRS RFQ
- New RF system for the HRS RFQ
- New patch panel for target connections
- New magnet FESA3 controller for GPS separator. From GM to FGC3
- Minor changes to the HRS separator magnets cycling algorithm

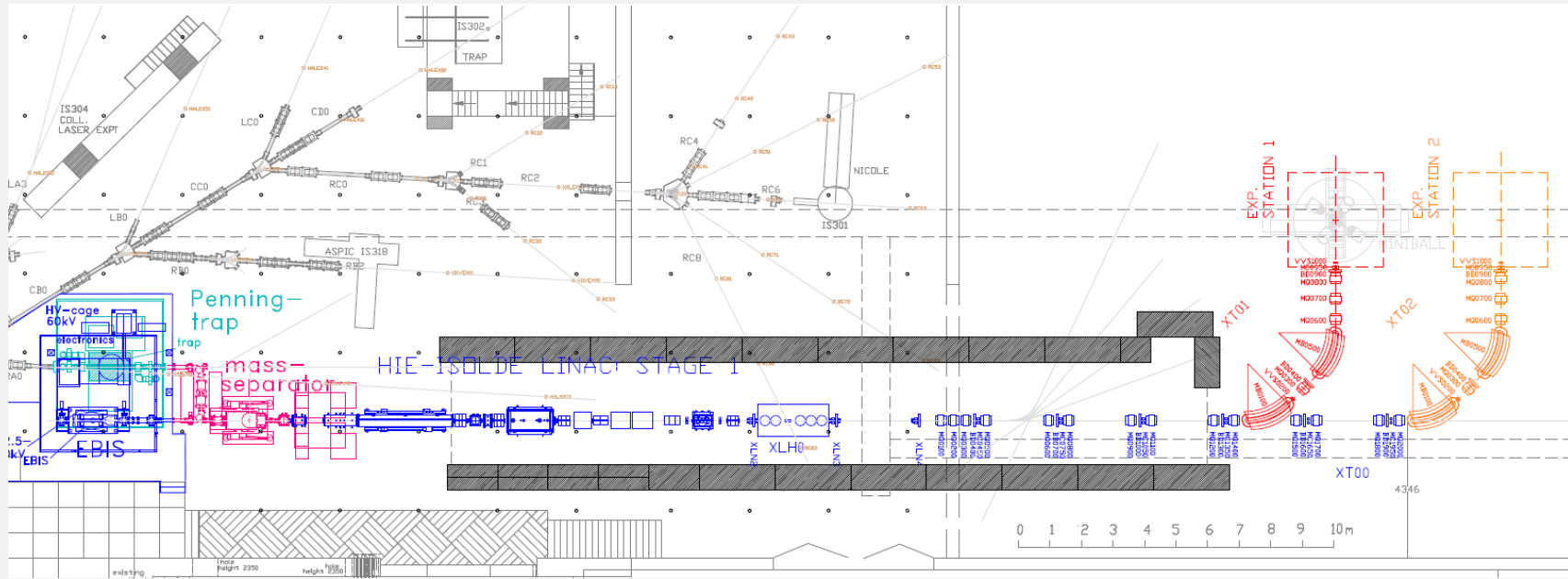
RESTART OF LINAC (WARM PART) AND REX

- Restart of the LINAC after being down for more than a year
- 9GAP RF amplifier upgrade
- New RF controls for the REXTRAP and multiple connections for different buffer gases
- Improvements on the REXTRAP HT stabilization. Increased REX low energy efficiency

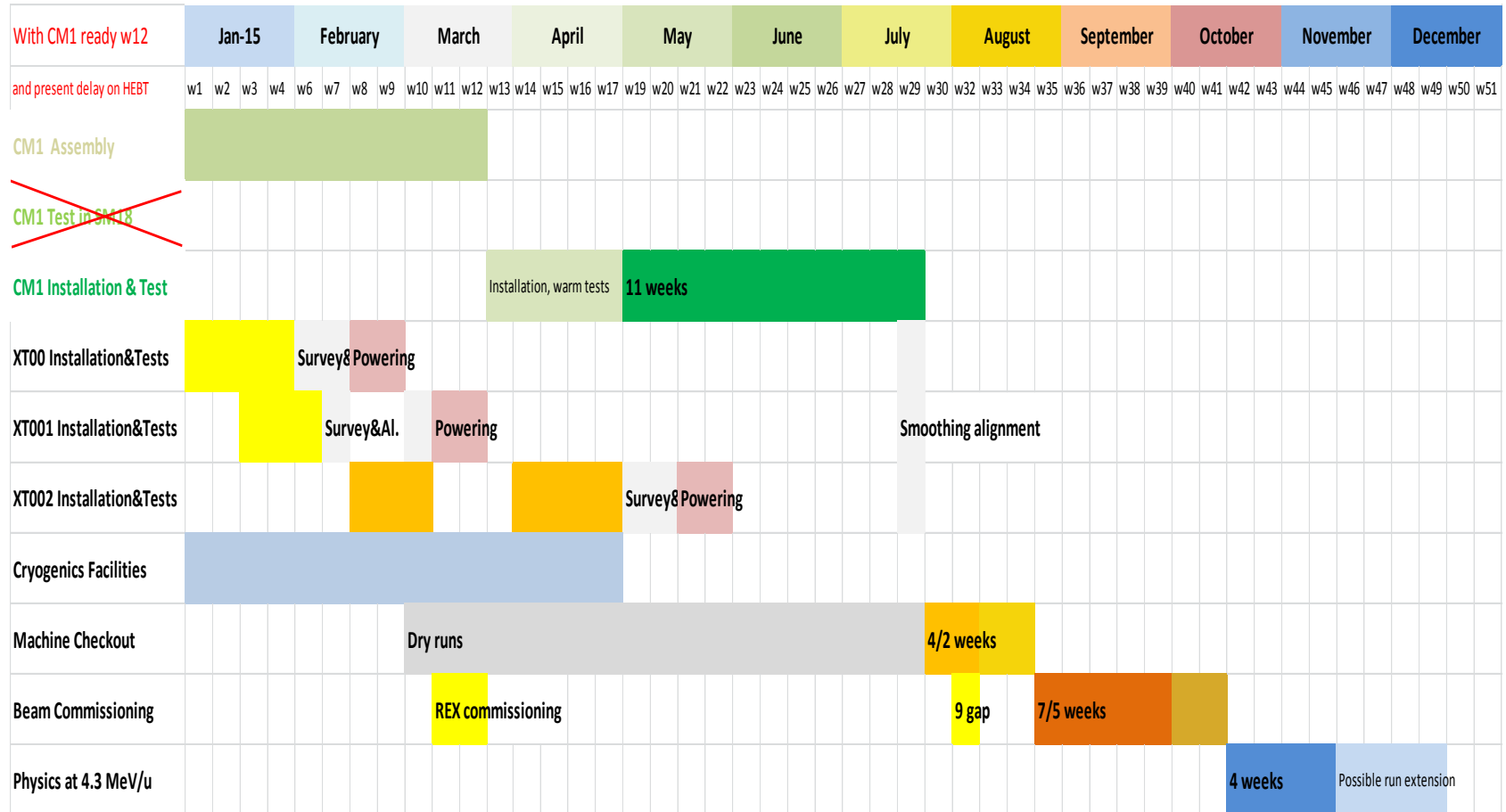
HIE COMMISSIONING

- End of installation simultaneous with the warm part recommissioning .
- New superconducting cavities installation .
- Cryo system for superconducting cavities. New installation at ISOLDE.
- New software and operation procedures to be defined.
- New Beam diagnostic system. To be tested.

HIE COMMISSIONING



HIE COMMISSIONING



Planning by Y. Kadi

NEW CONTROL ROOM (508). DESIGN , INSTALLATION AND MOVE

- Time to say goodbye to the old ISOLDE control room and hello to a brand new control room at 508.
- Coexistence of the new and old control room. To decide what equipment to move.
- New visit tours with a better global view of the hall and more visit friendly layout.
- Better life for operators and users with a proper control room where silence, eating , drinking are possible.
- New labs and meeting rooms for different groups.

NEW PEOPLE AT ISOLDE (OPERATION TEAM)



Eleftherios Fadakis



Jose Alberto Rodriguez Rodriguez



Miguel Lozano Benito



Erwin Siesling



Pascal Fernier.

No more shifts!

Arriving in June/July



Emanuele Matli

SAFETY. NEW RISKS AT ISOLDE

- New equipment ,new risks analysis and safety requirements.
- Cryo systems. First time at ISOLDE.
- Longer and more complex LINAC tunnel. New interlocks and more complex setup of the machine.
- New evacuation plans due to new layout and new risks. More evacuation exercises will take place during the year.

OTHER CHALLENGES FOR THIS YEAR

-Negative ions at ISOLDE. At ,Po , Cl.

-New Molten metal target based on Pb-Bi.

-MEDICIS.

MANY THANKS FOR YOUR ATTENTION



QUESTIONS ?