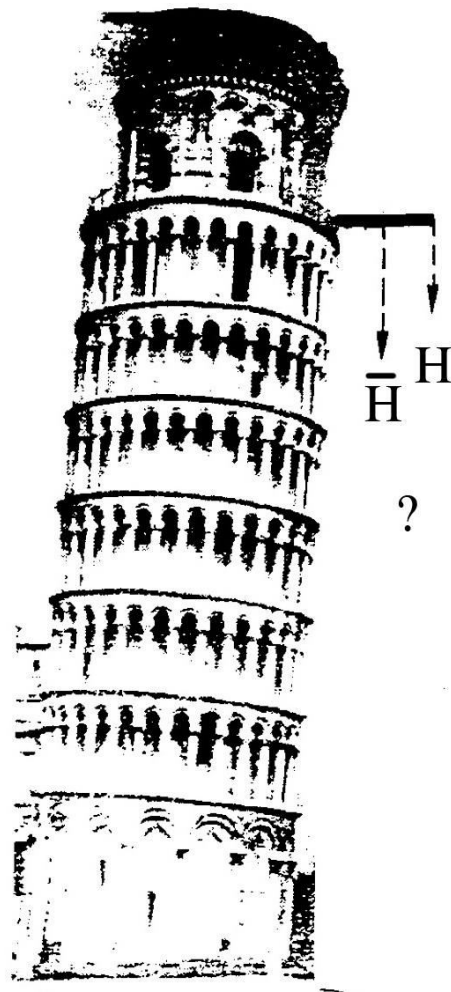


# AEGIS



# Untersuchungen der Fragmentationen und Entstehungsprodukte von Antiproton- Titankern-Kollisionen sowie Annihilationen in Fotoplatten.



NETZWERK  
TEILCHENWELT



**Untersuchungen der Fragmentationen und  
Entstehungsprodukte von Antiproton-  
Titankern-Kollisionen sowie Annihilationen  
in Fotoplatten.**

**und**

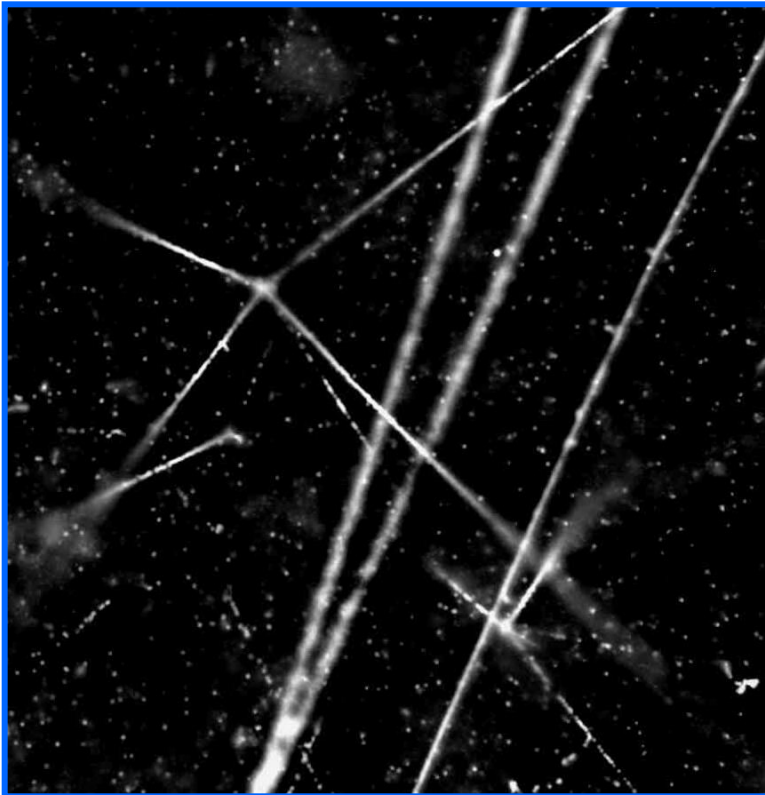
**Untersuchungen der Teilchenproduktionen  
und -bahnen bei der Produktionsinjektion  
von Antiproton im AD, insbesondere von  
Myonen.**



NETZWERK  
TEILCHENWELT

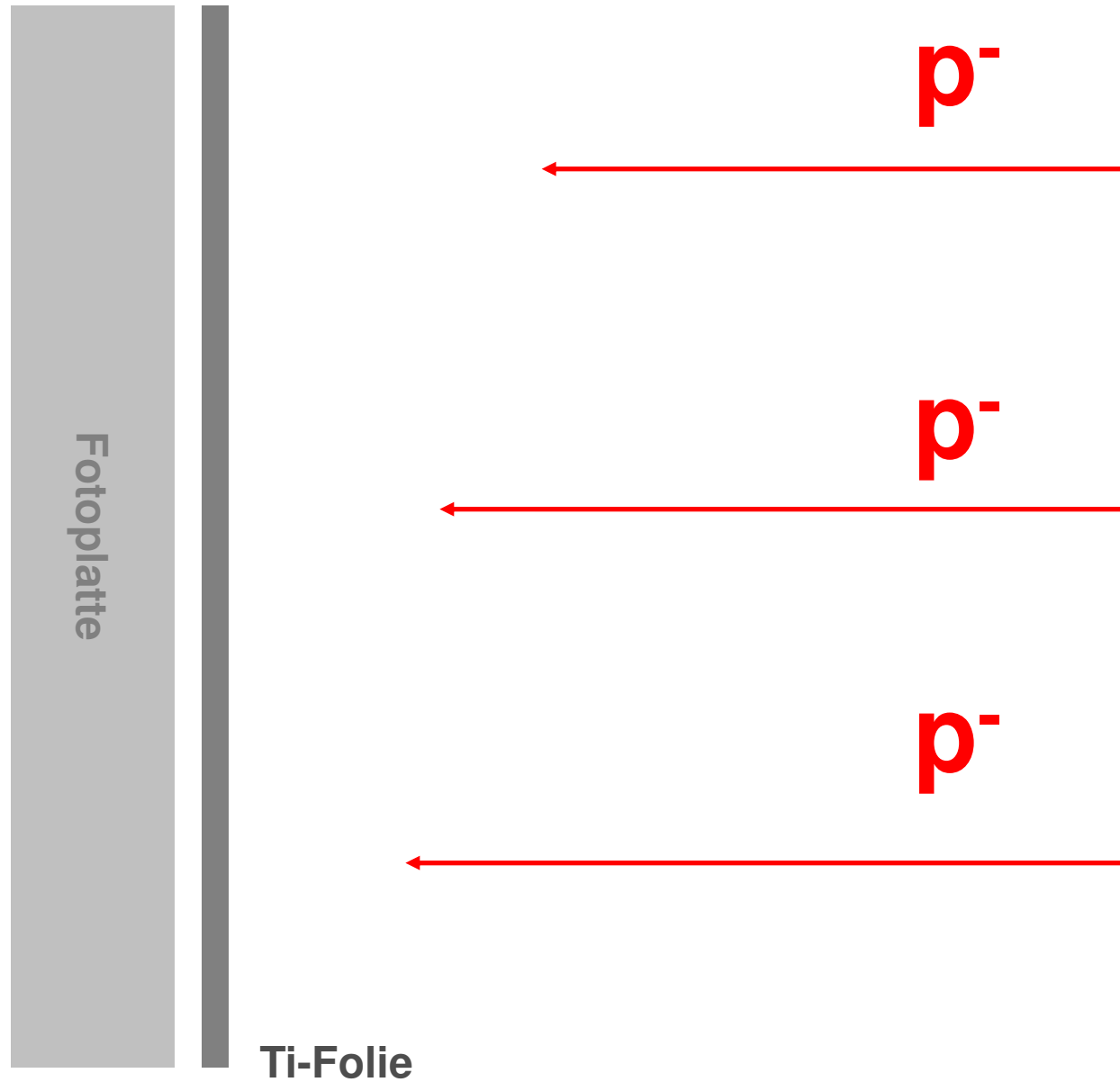


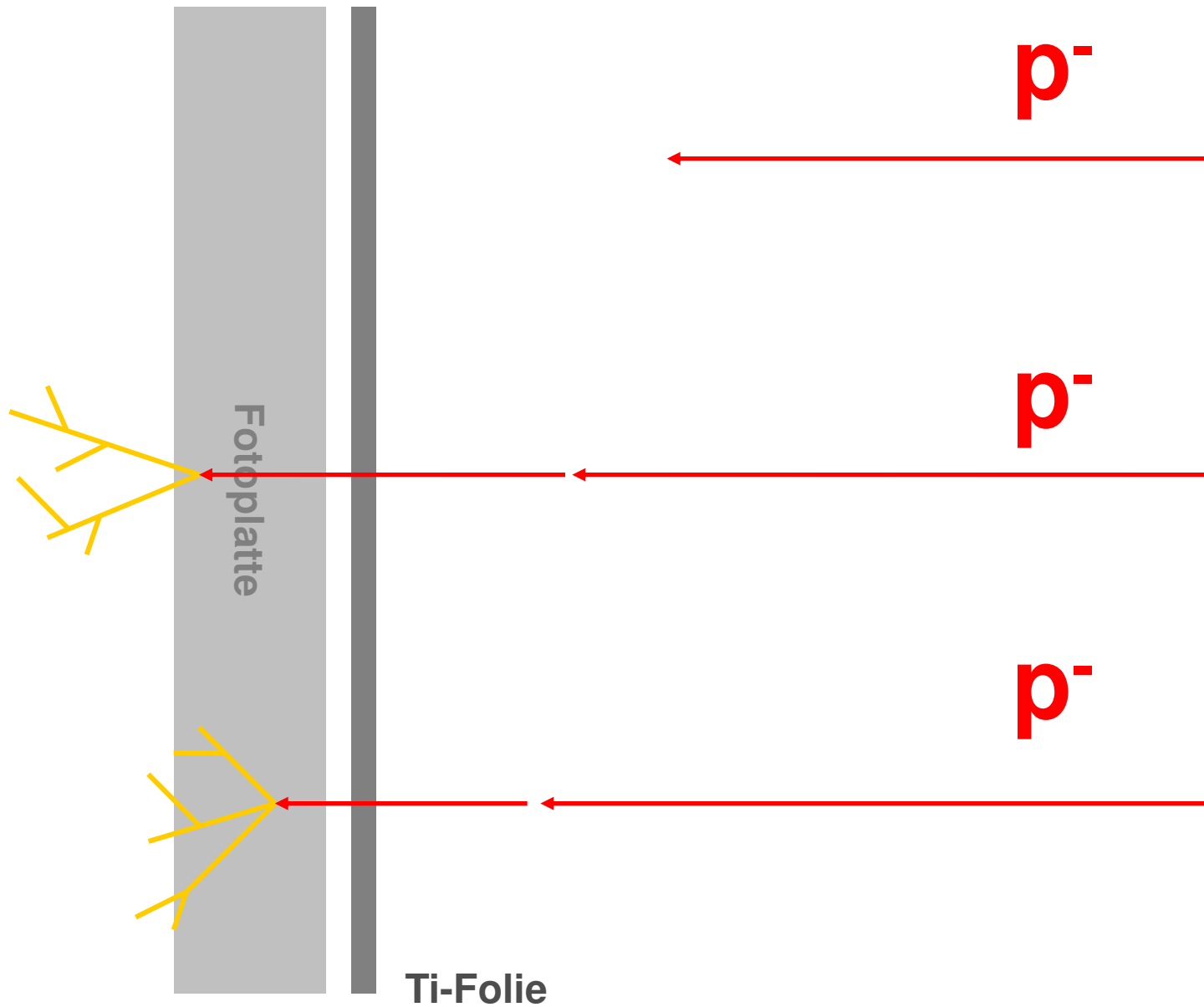
## Fotoplatten



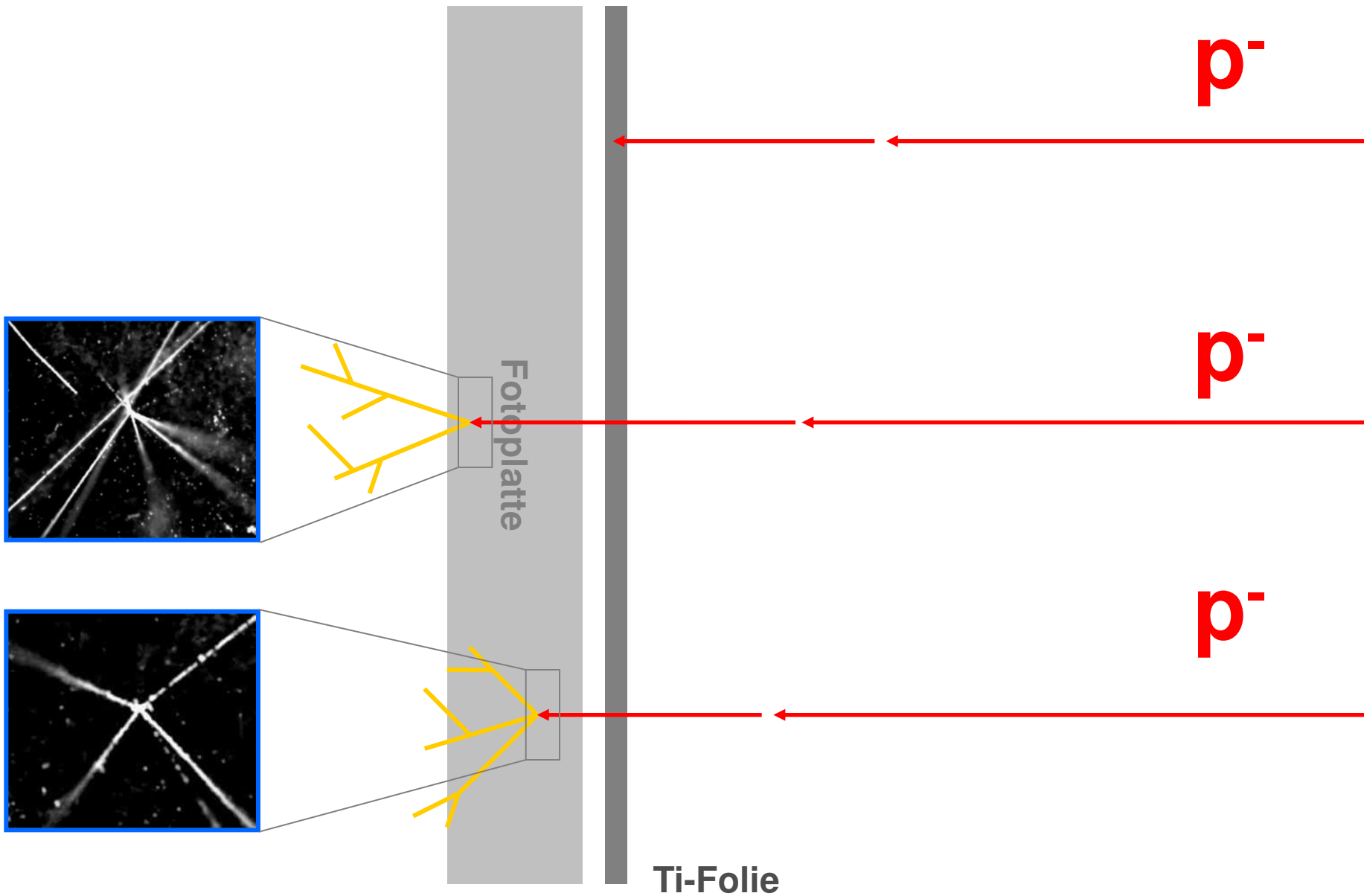
## Nebelkammer

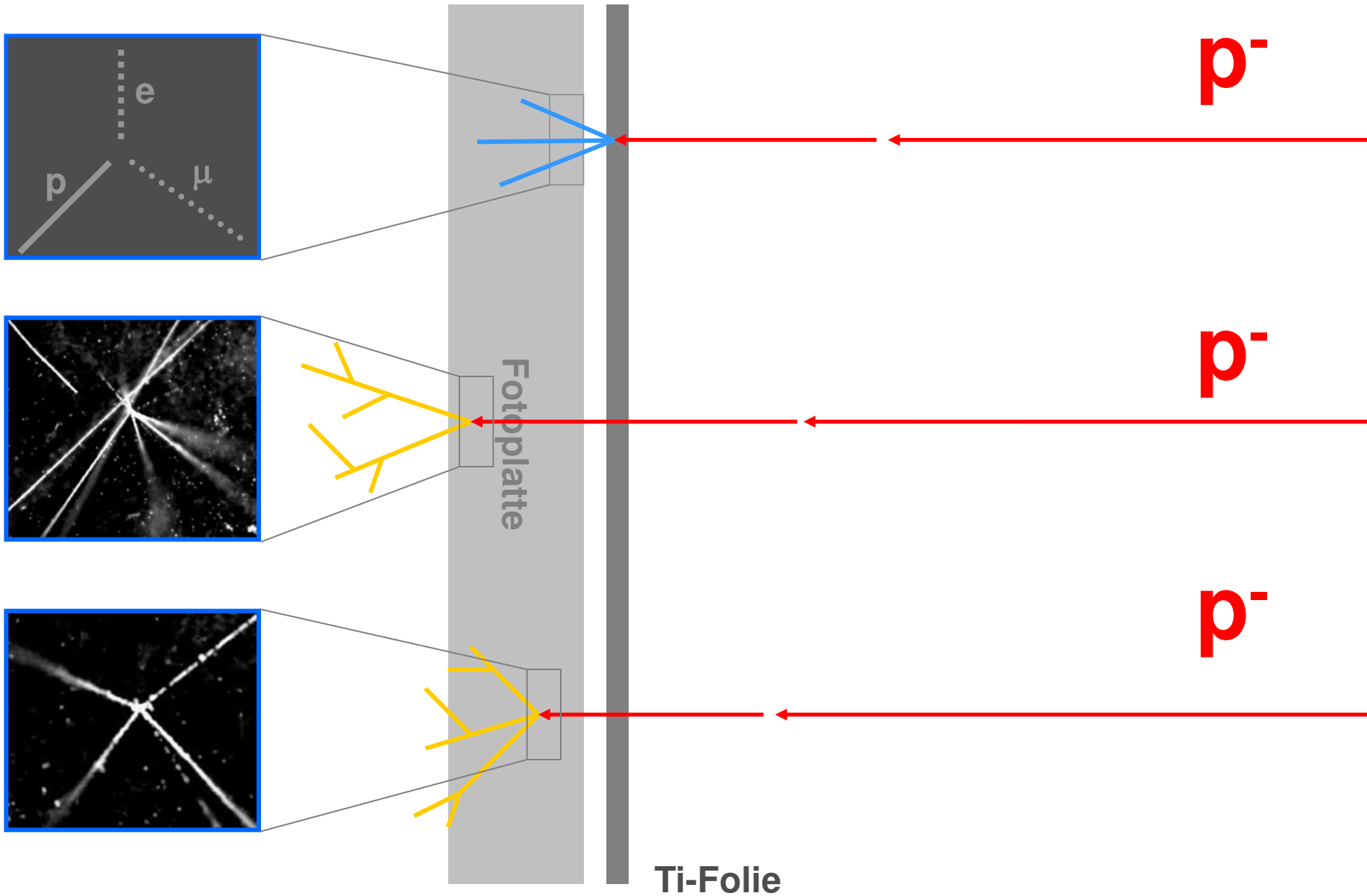




















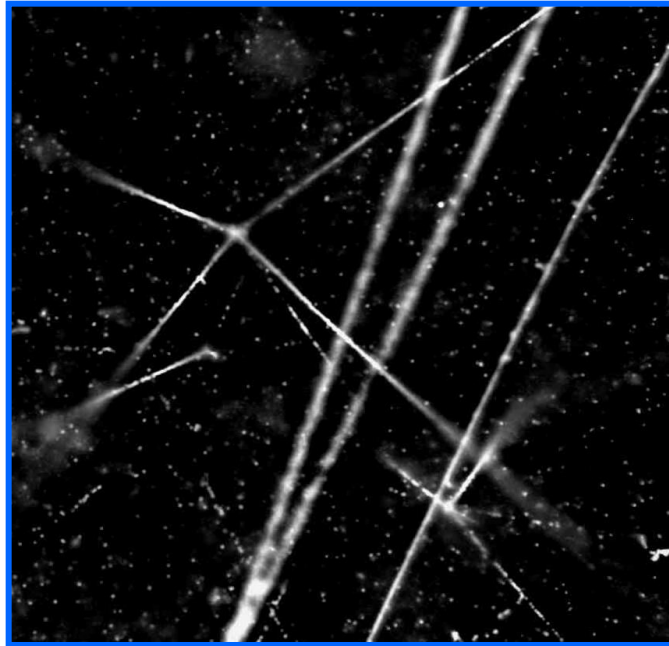








**91.120**

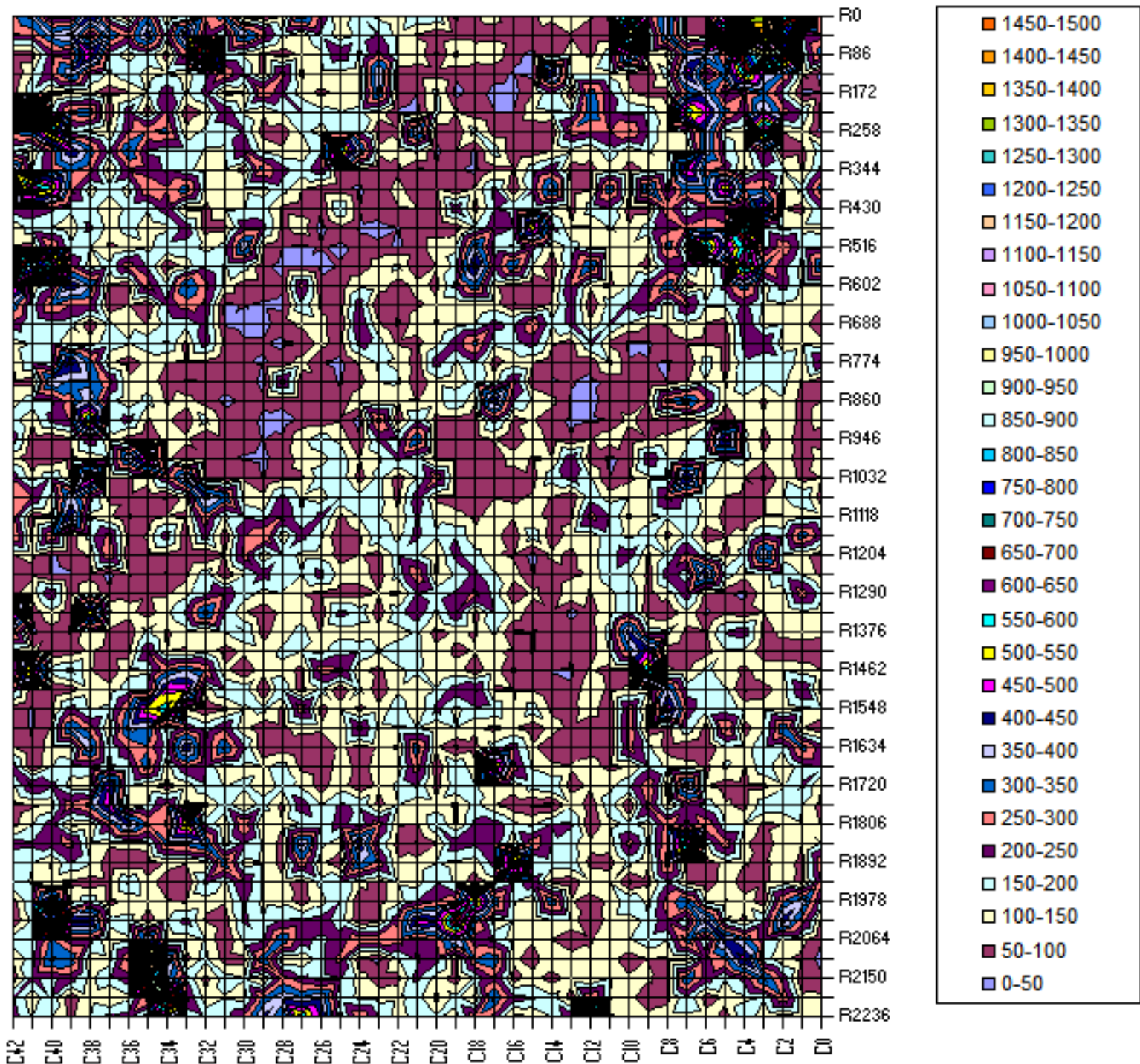


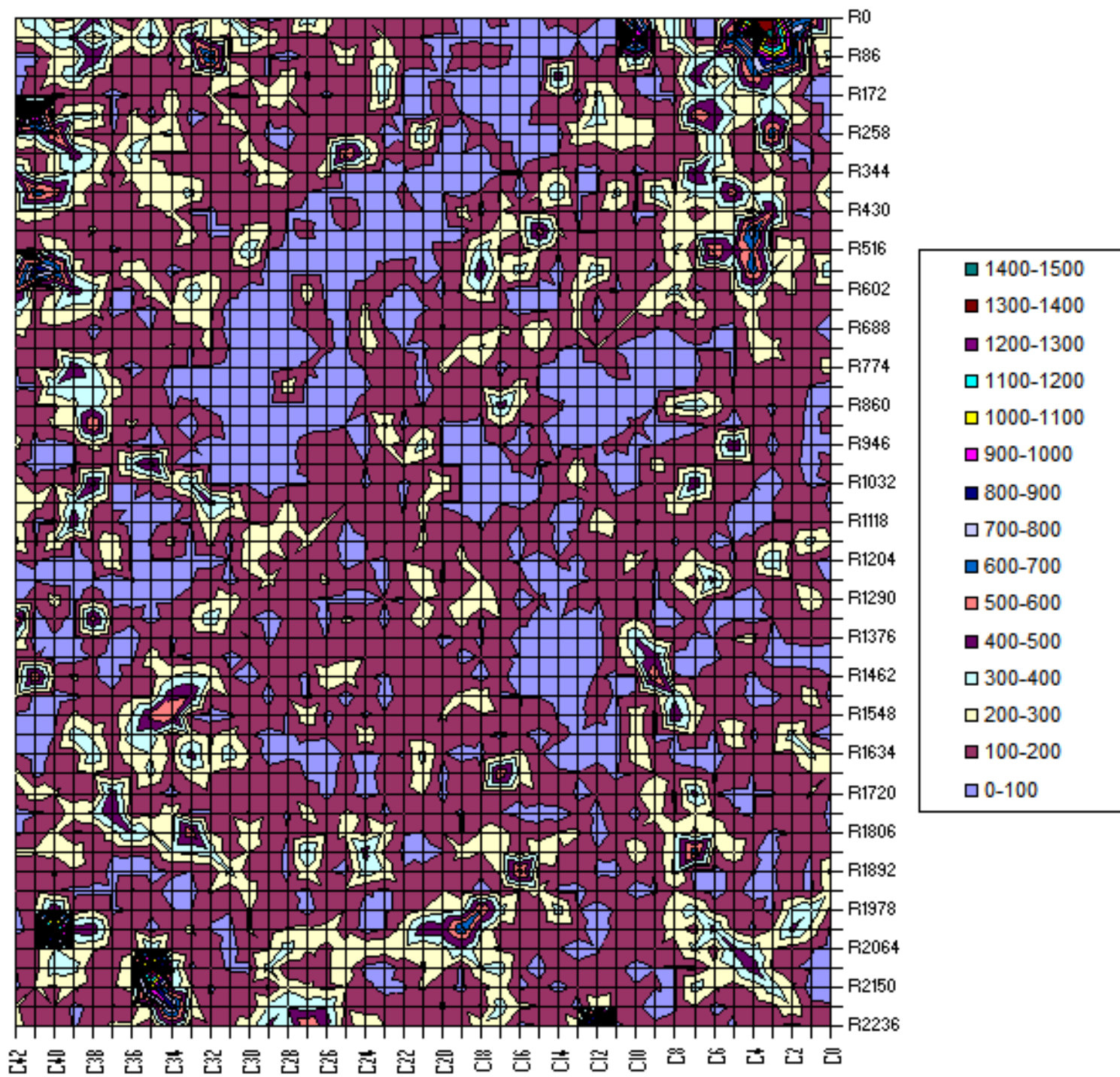
**Verteilung?**

**Annihilationen?**

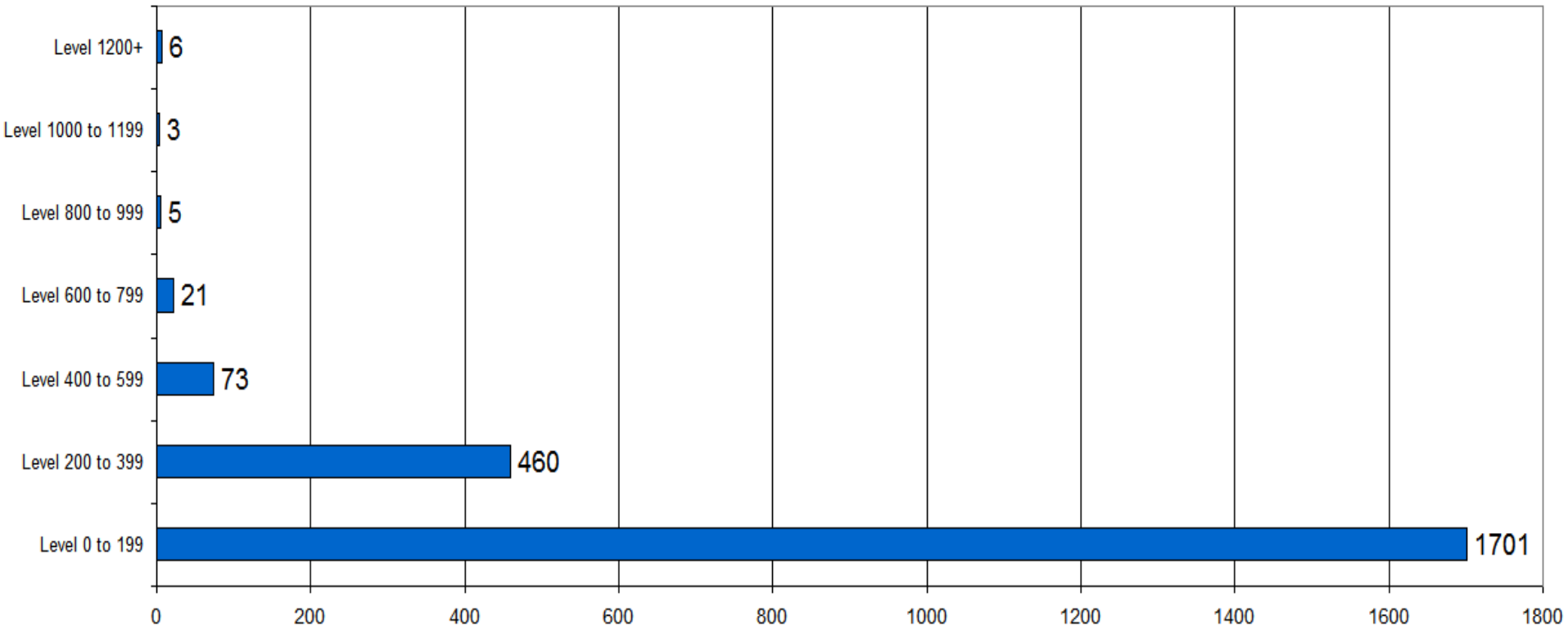
**Annihilationspunkt?**

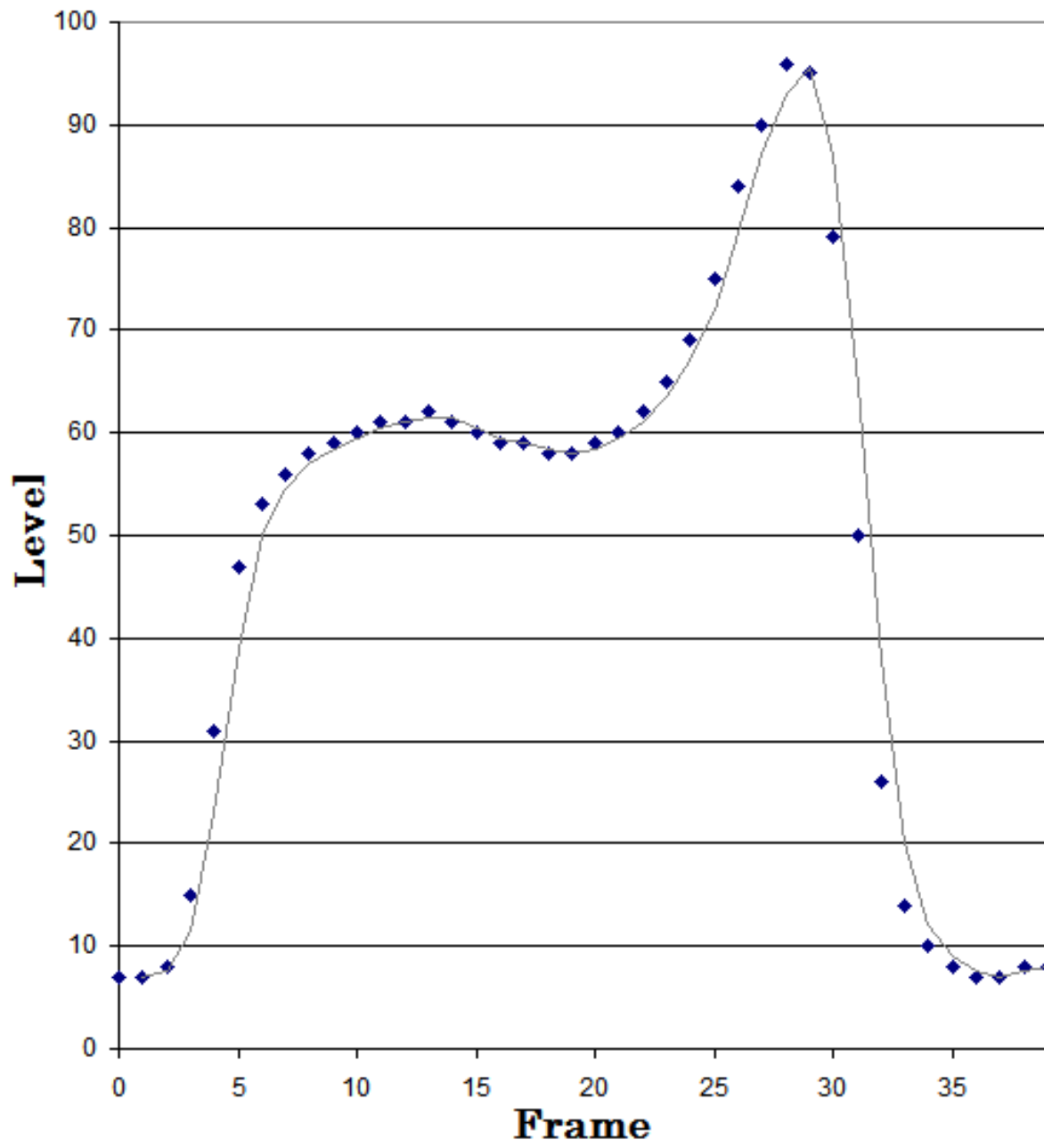
**p-Ti-Kollision?**

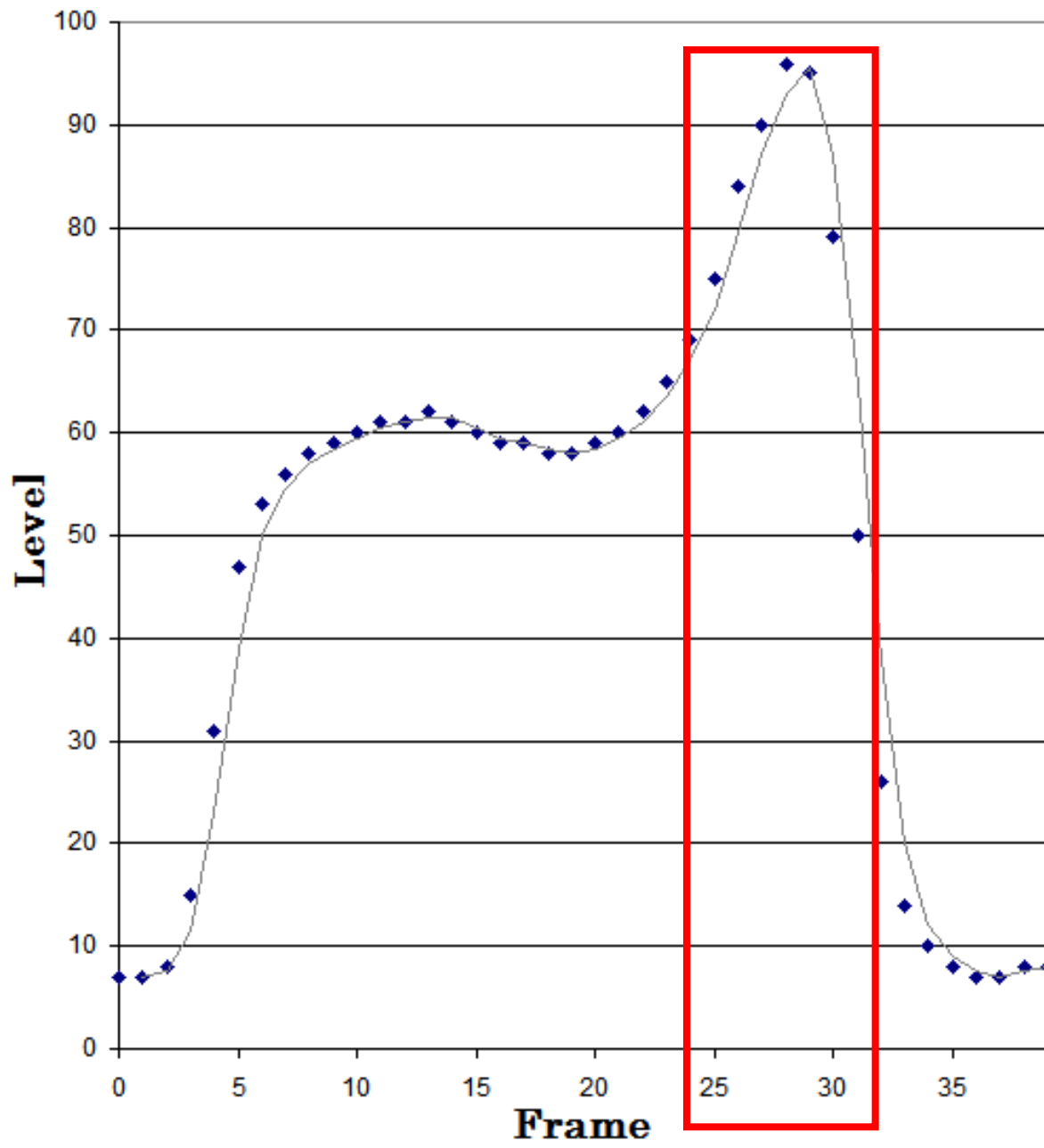




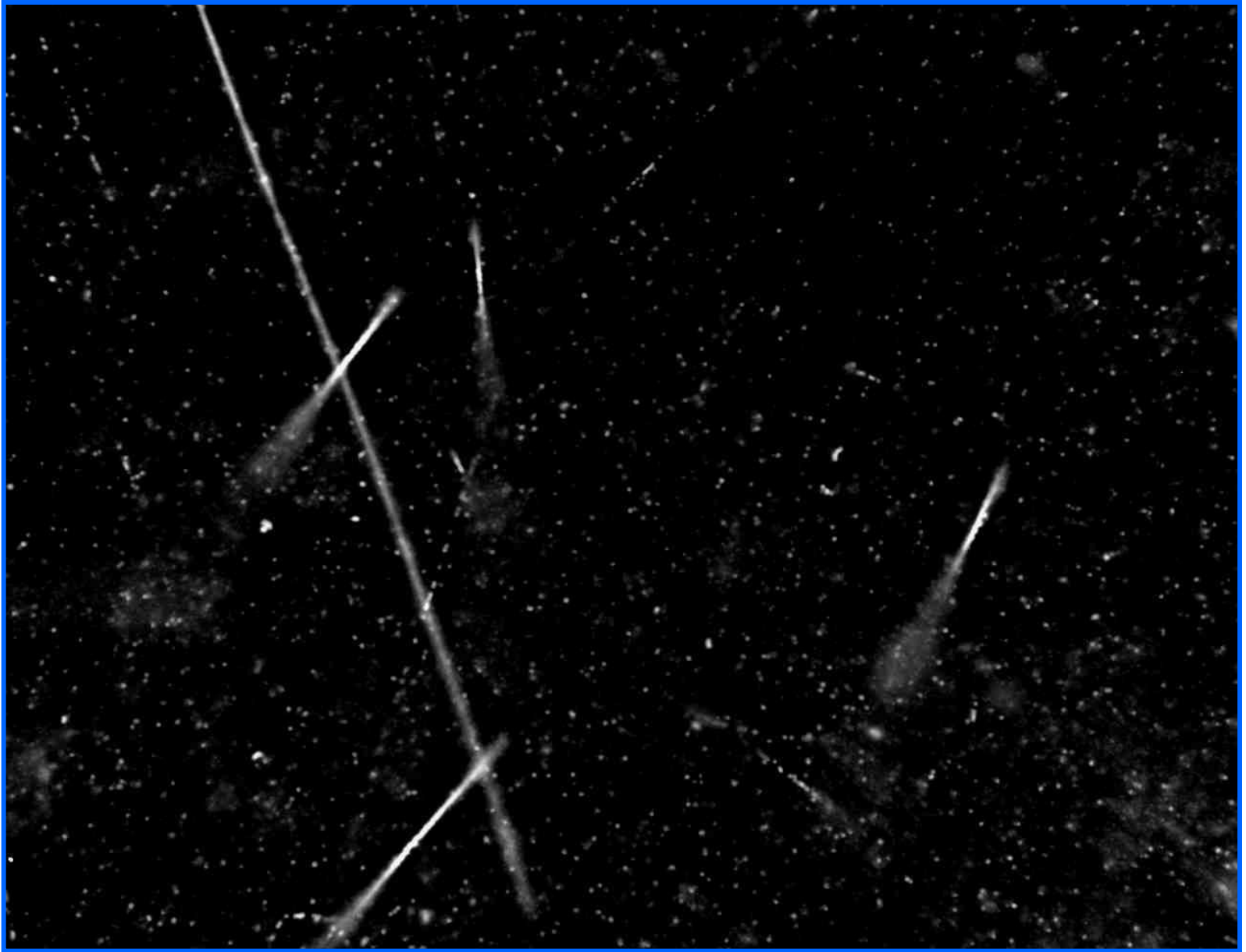
## Step: 200

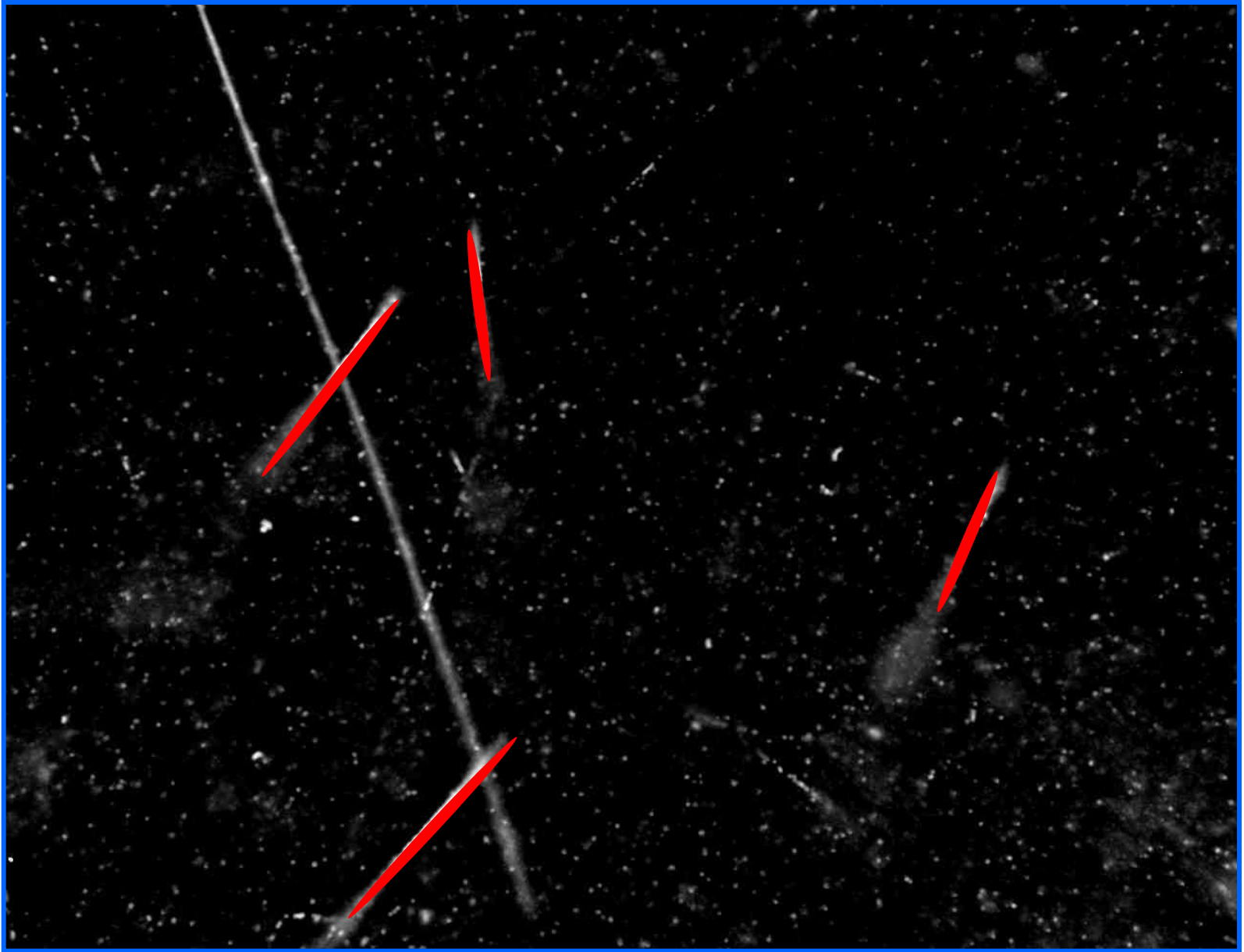


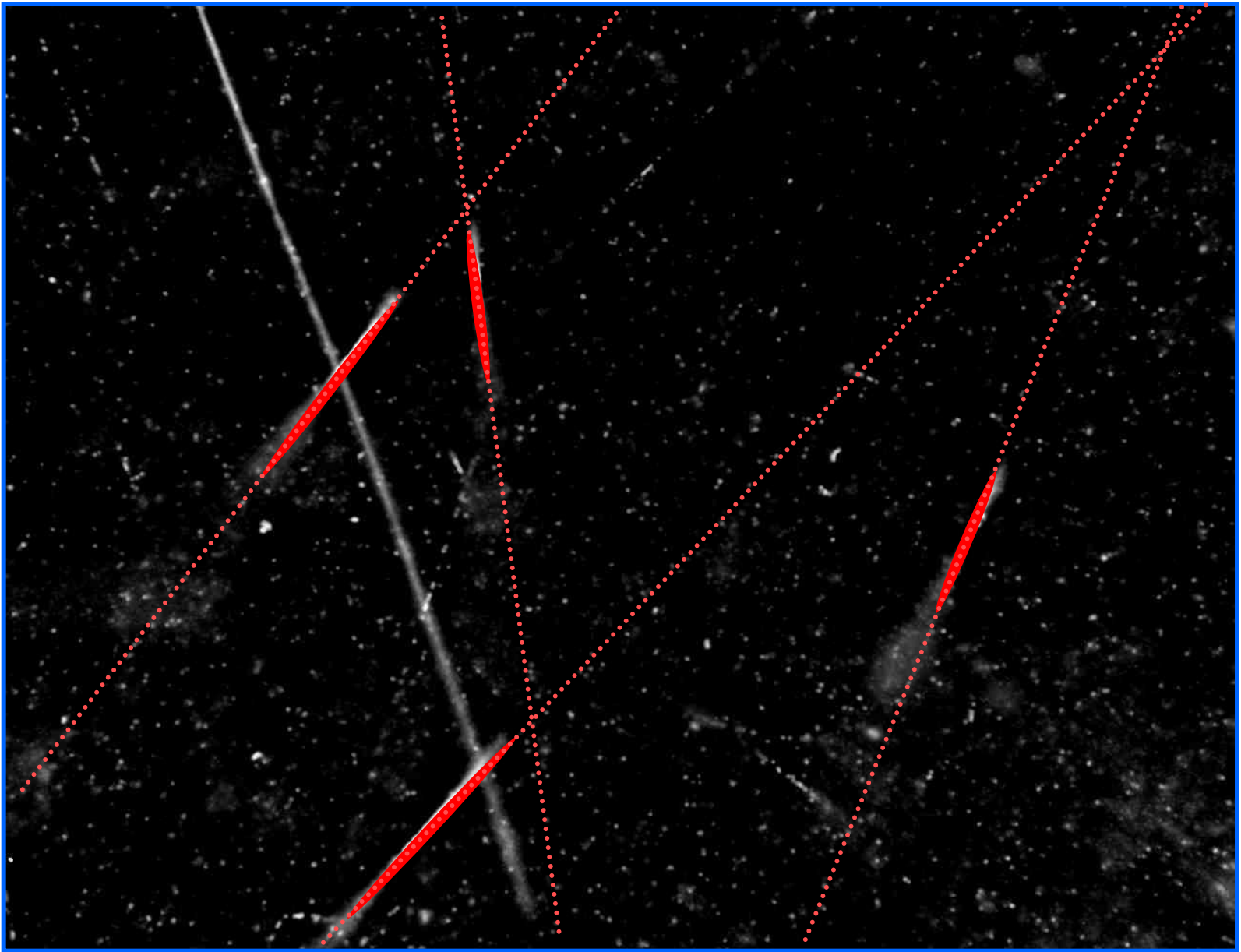


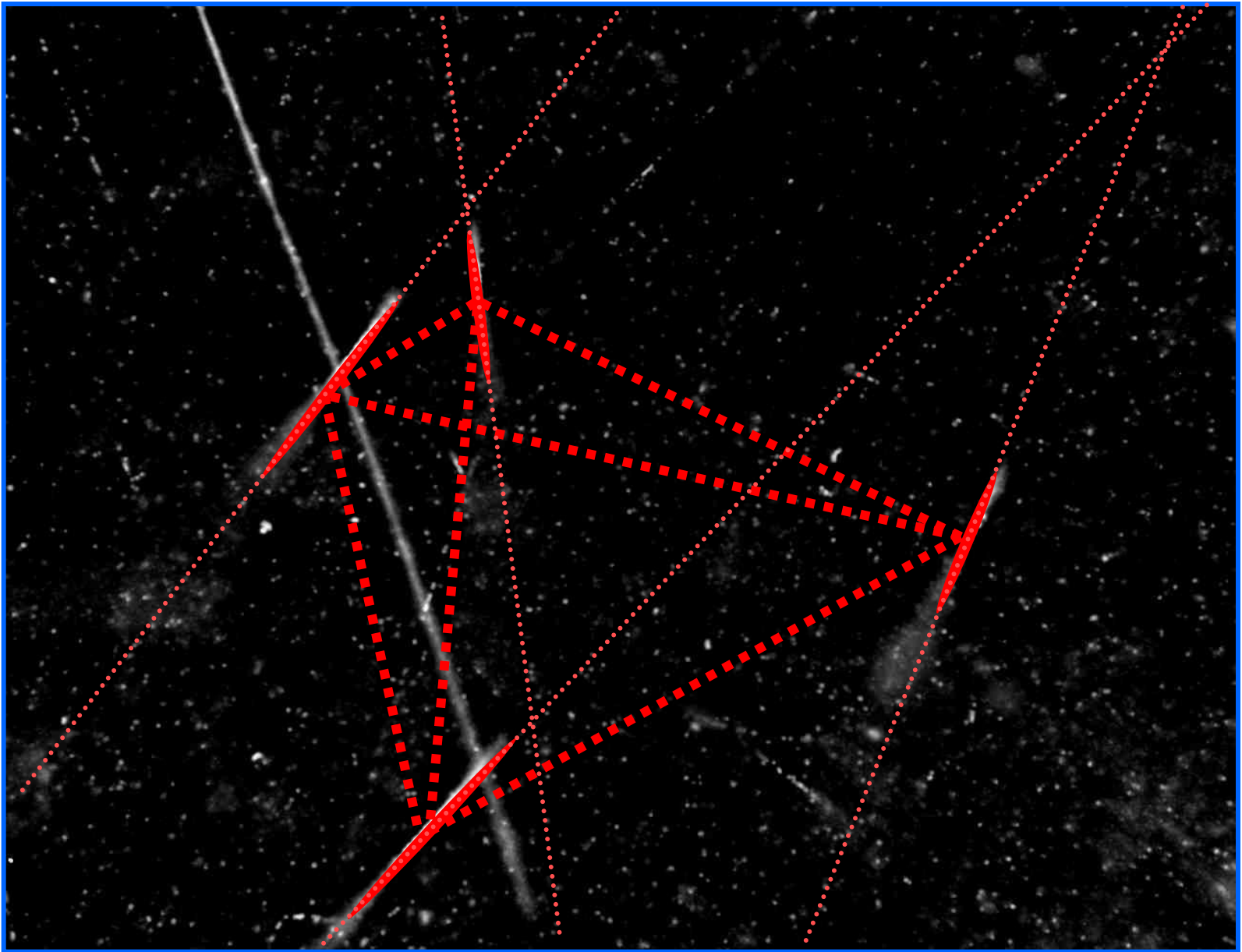


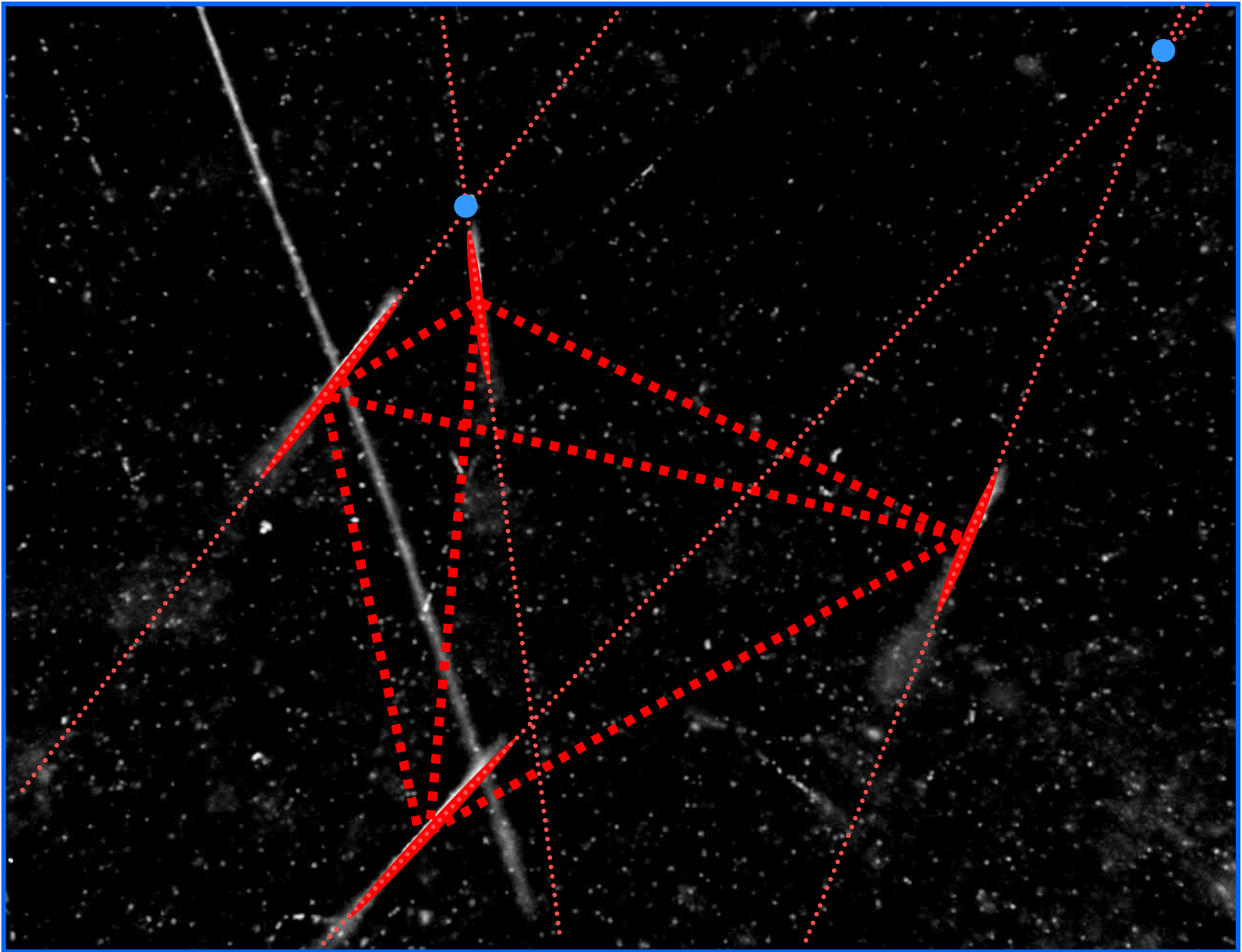


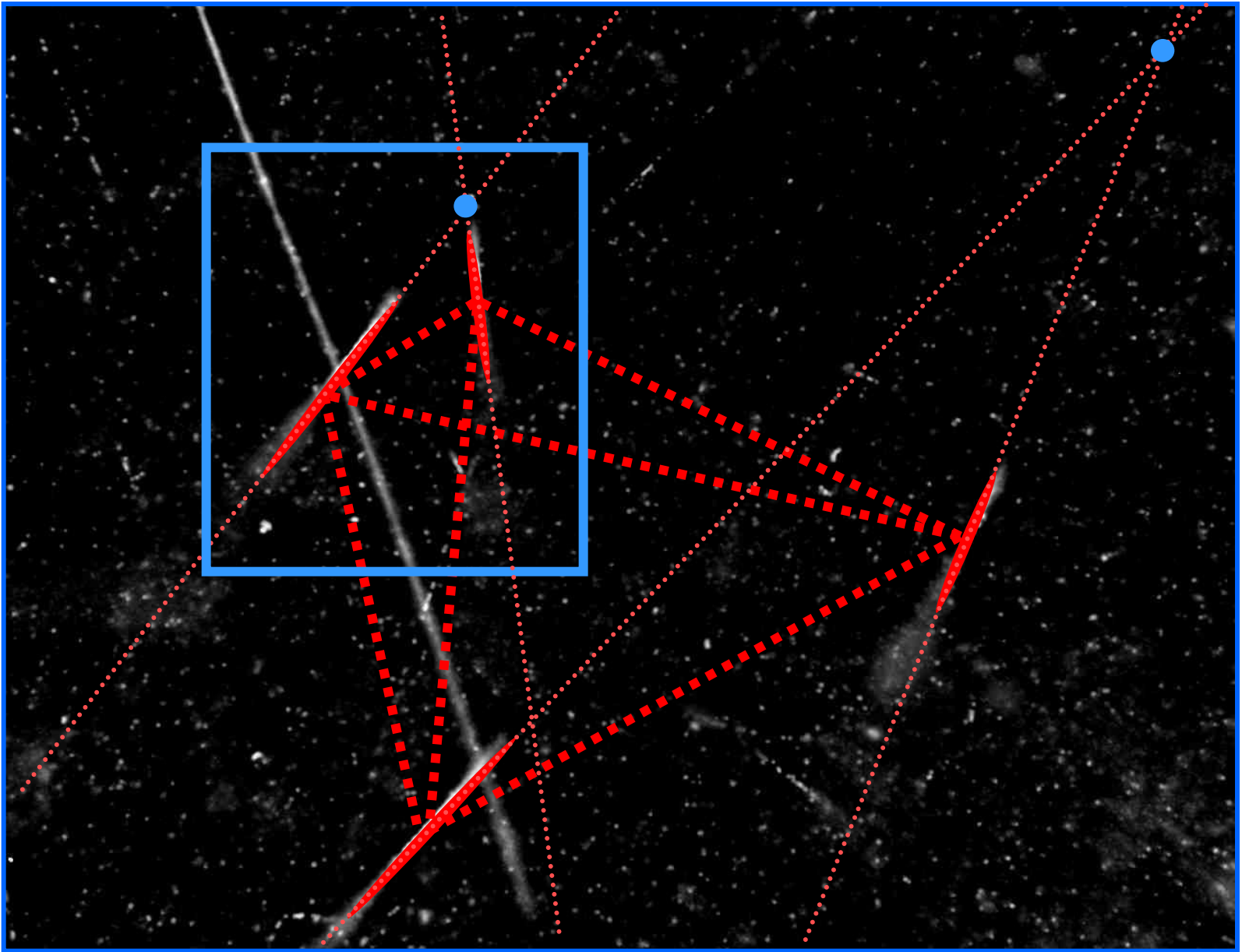






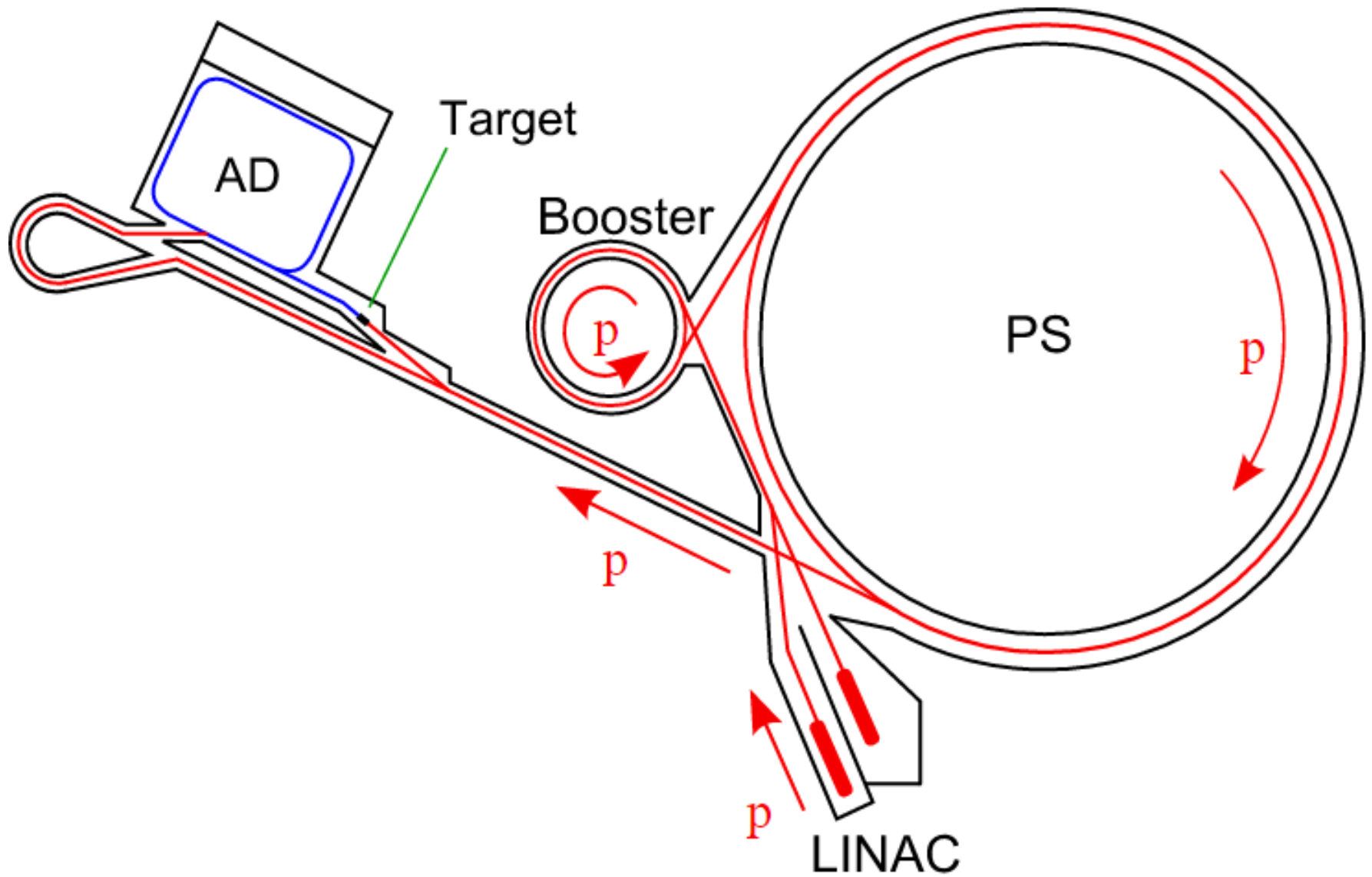






# Nebelkammer



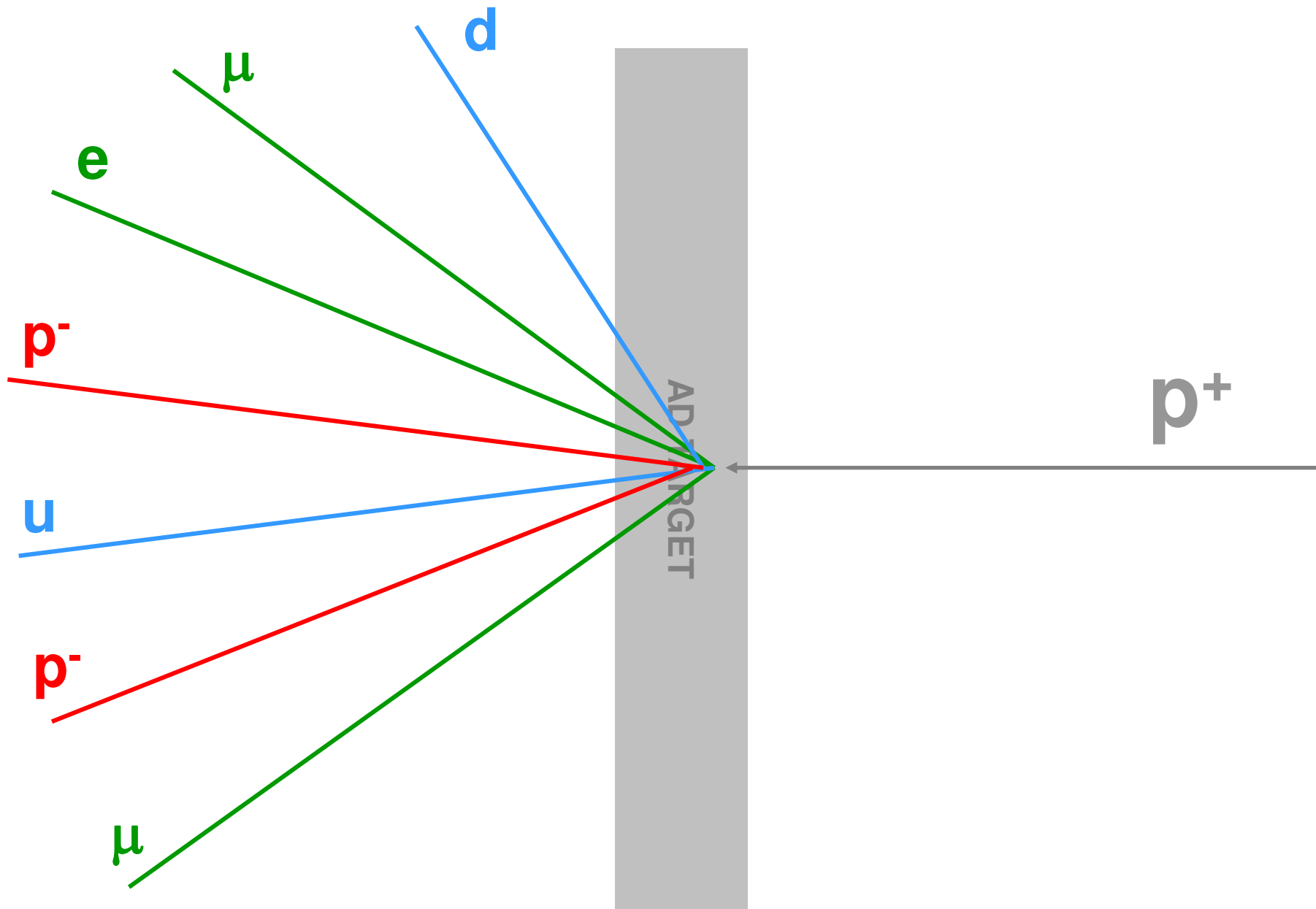


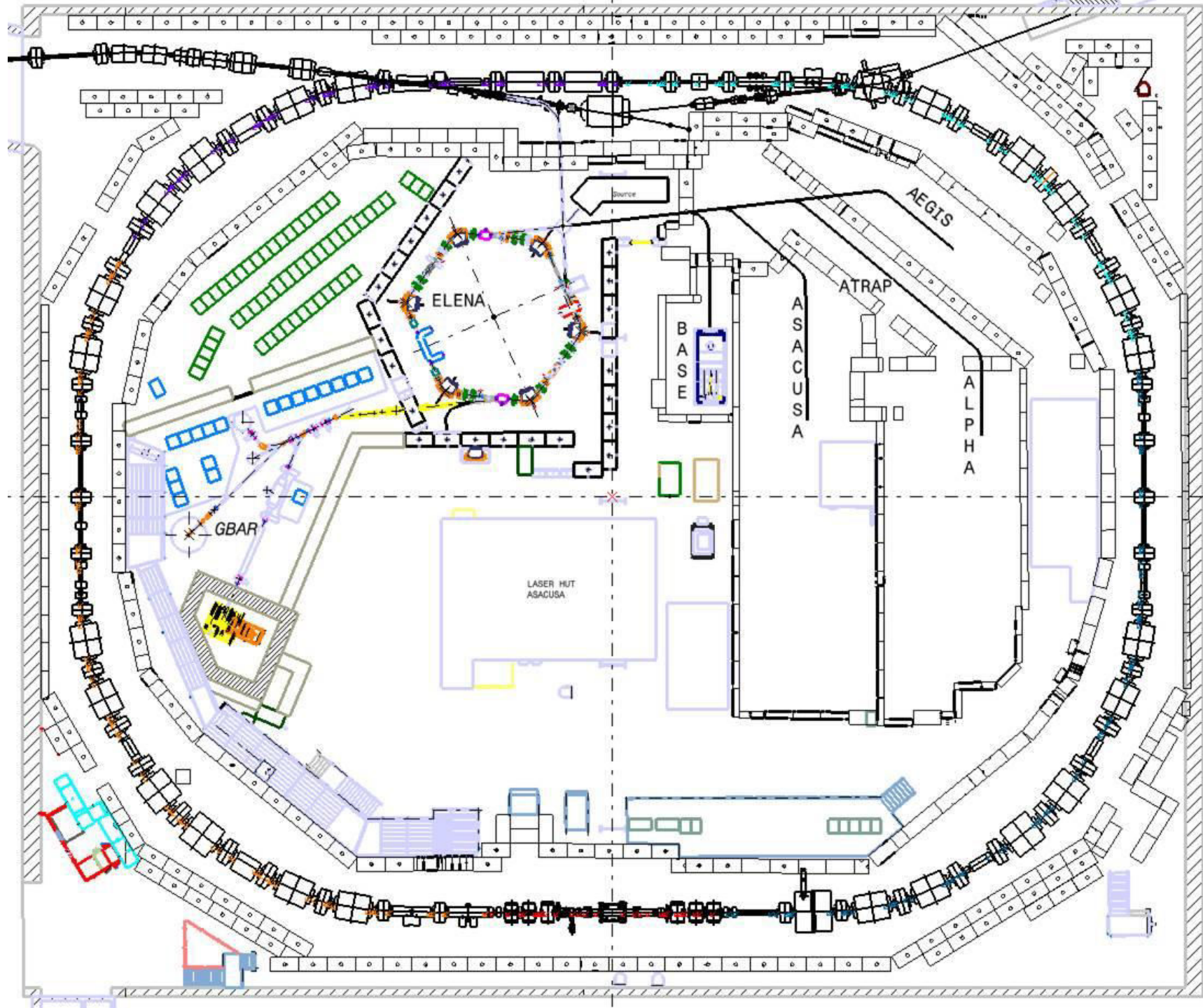


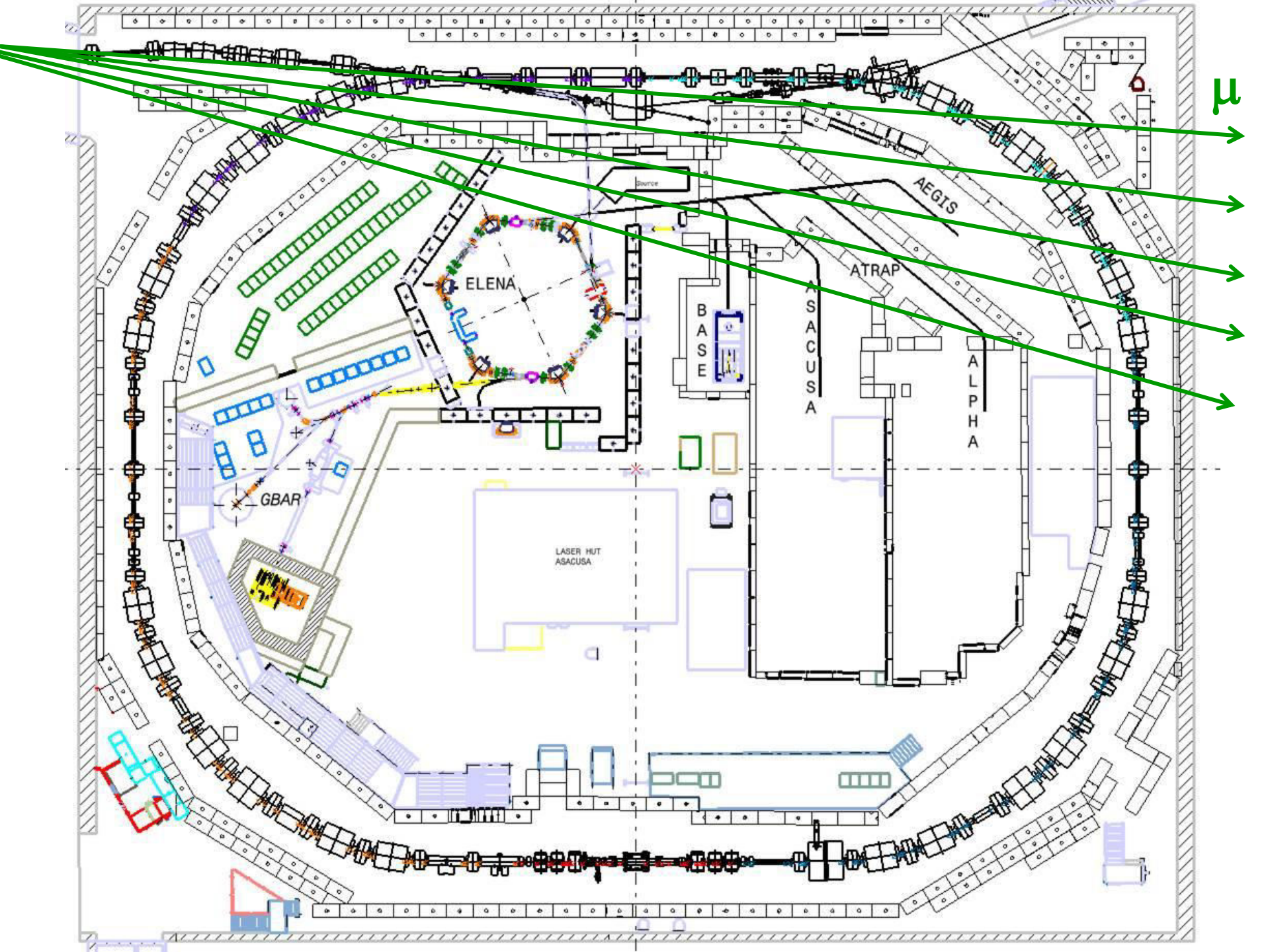


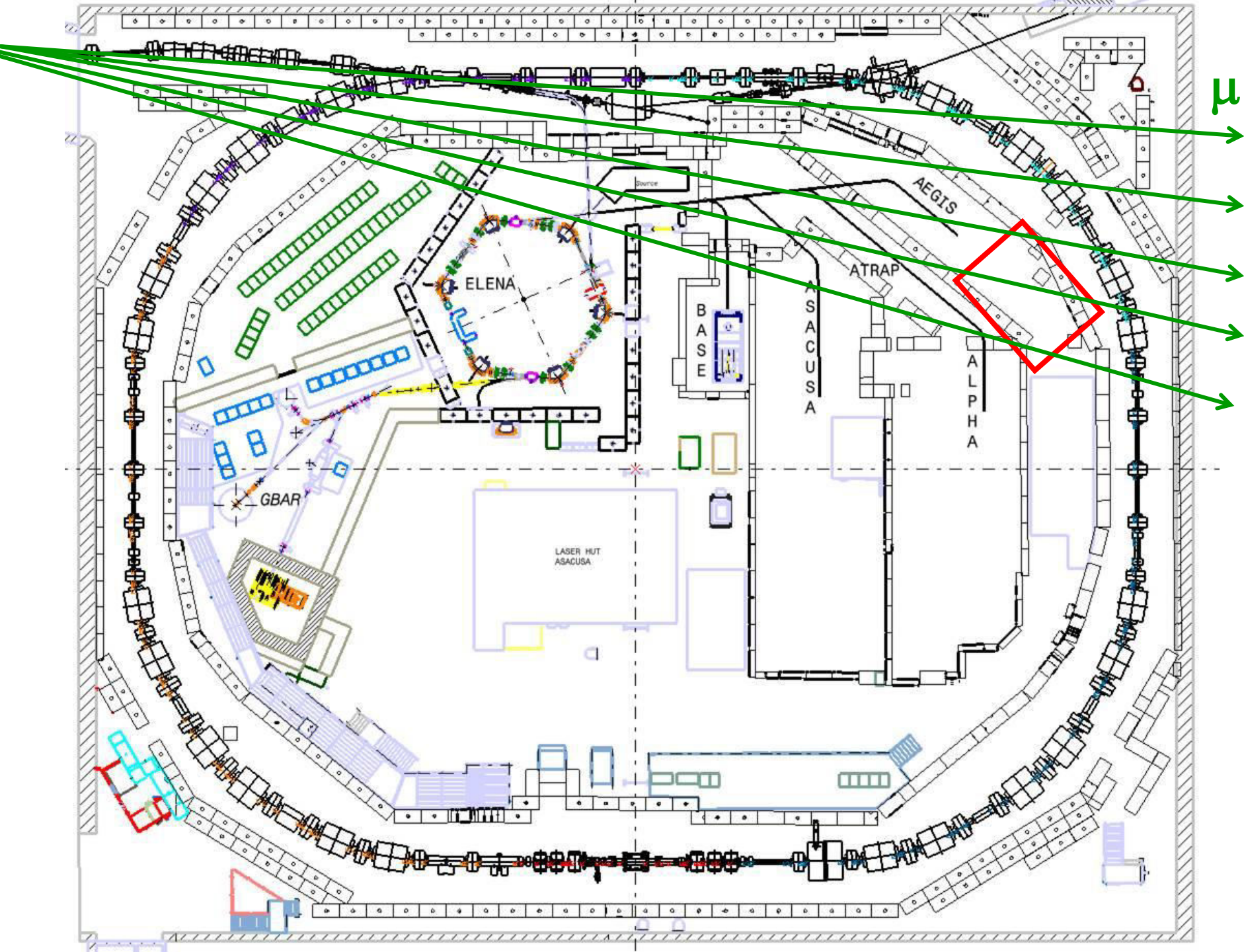
AD TARGET

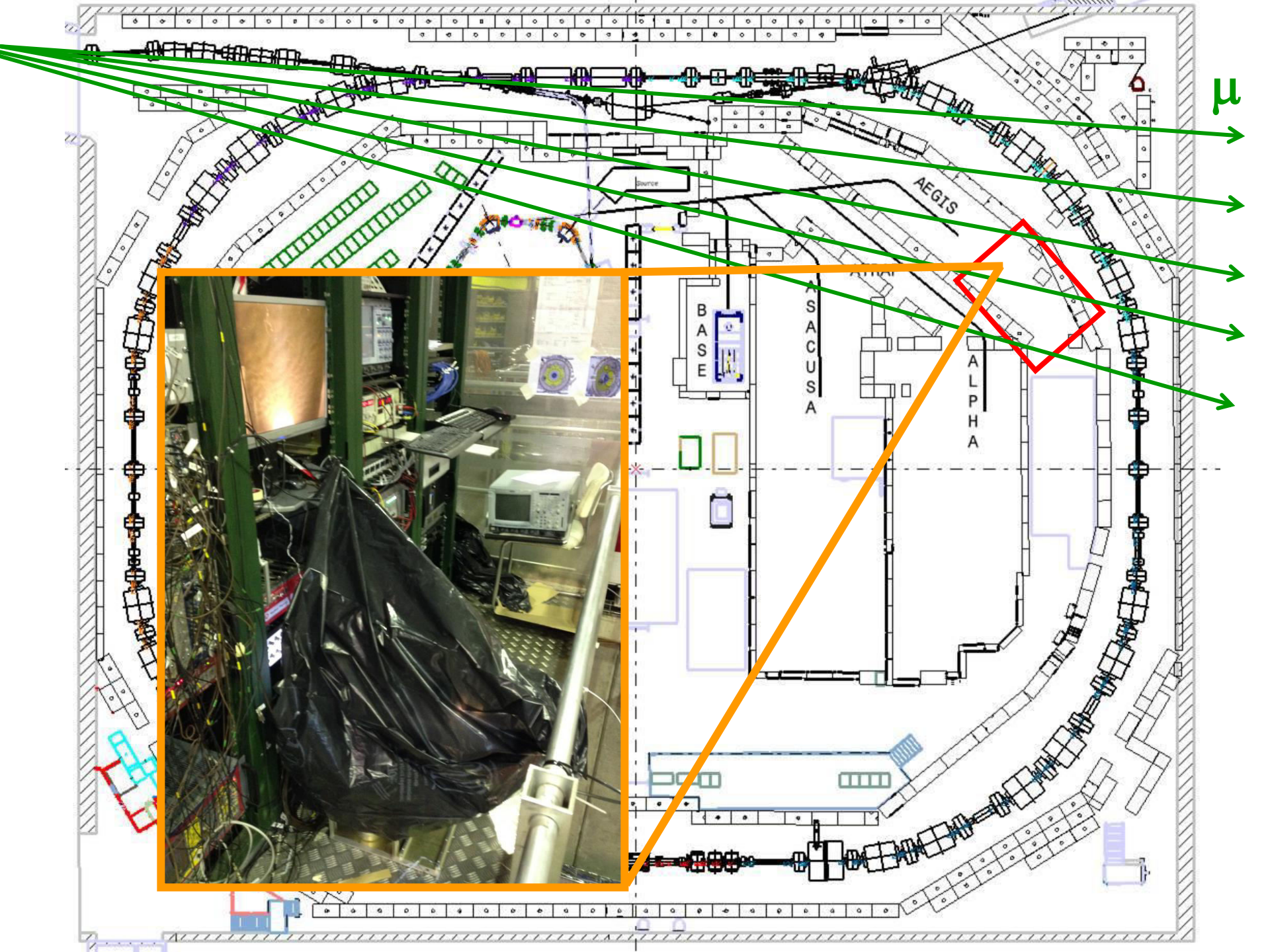
$p^+$

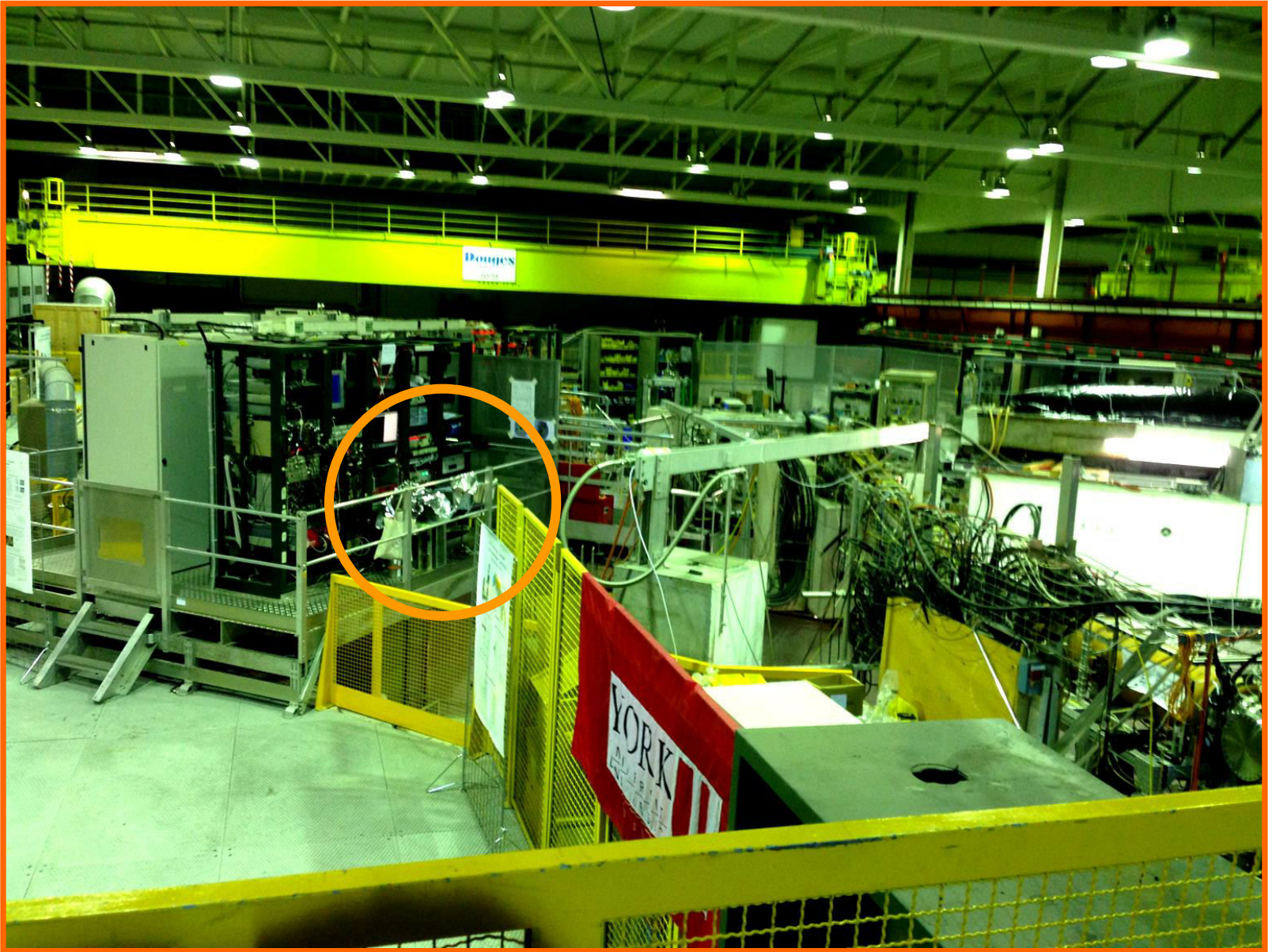


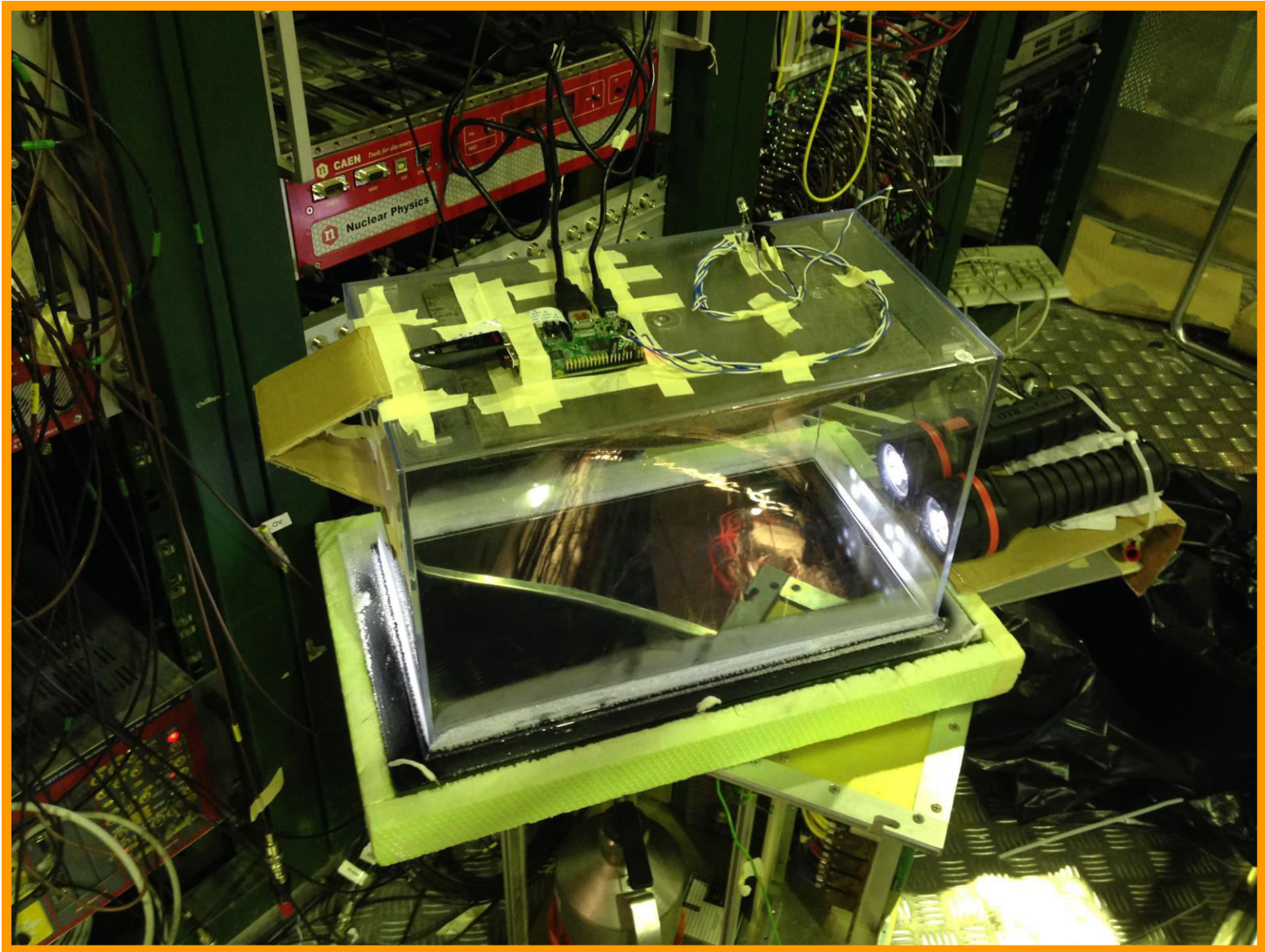




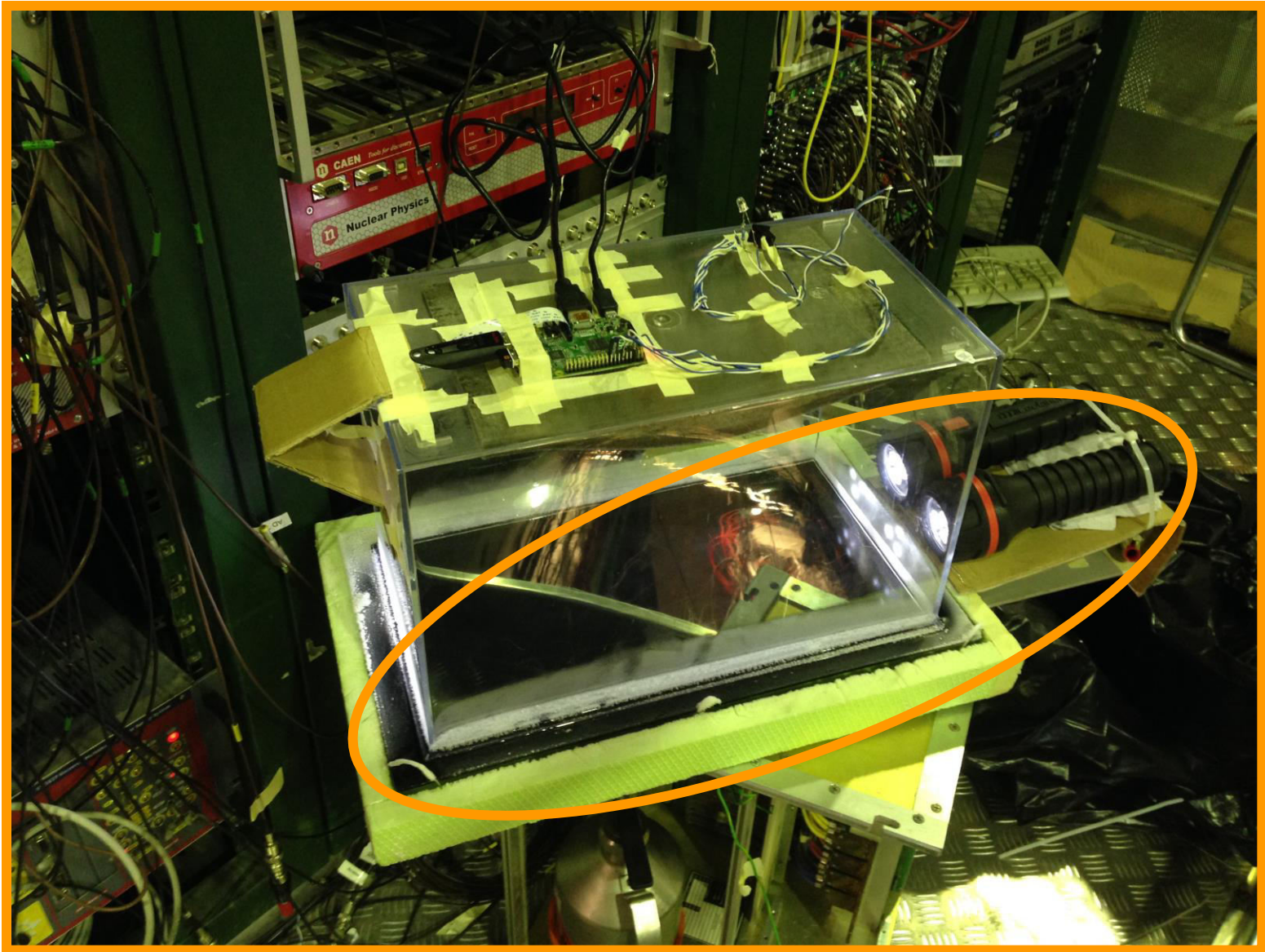


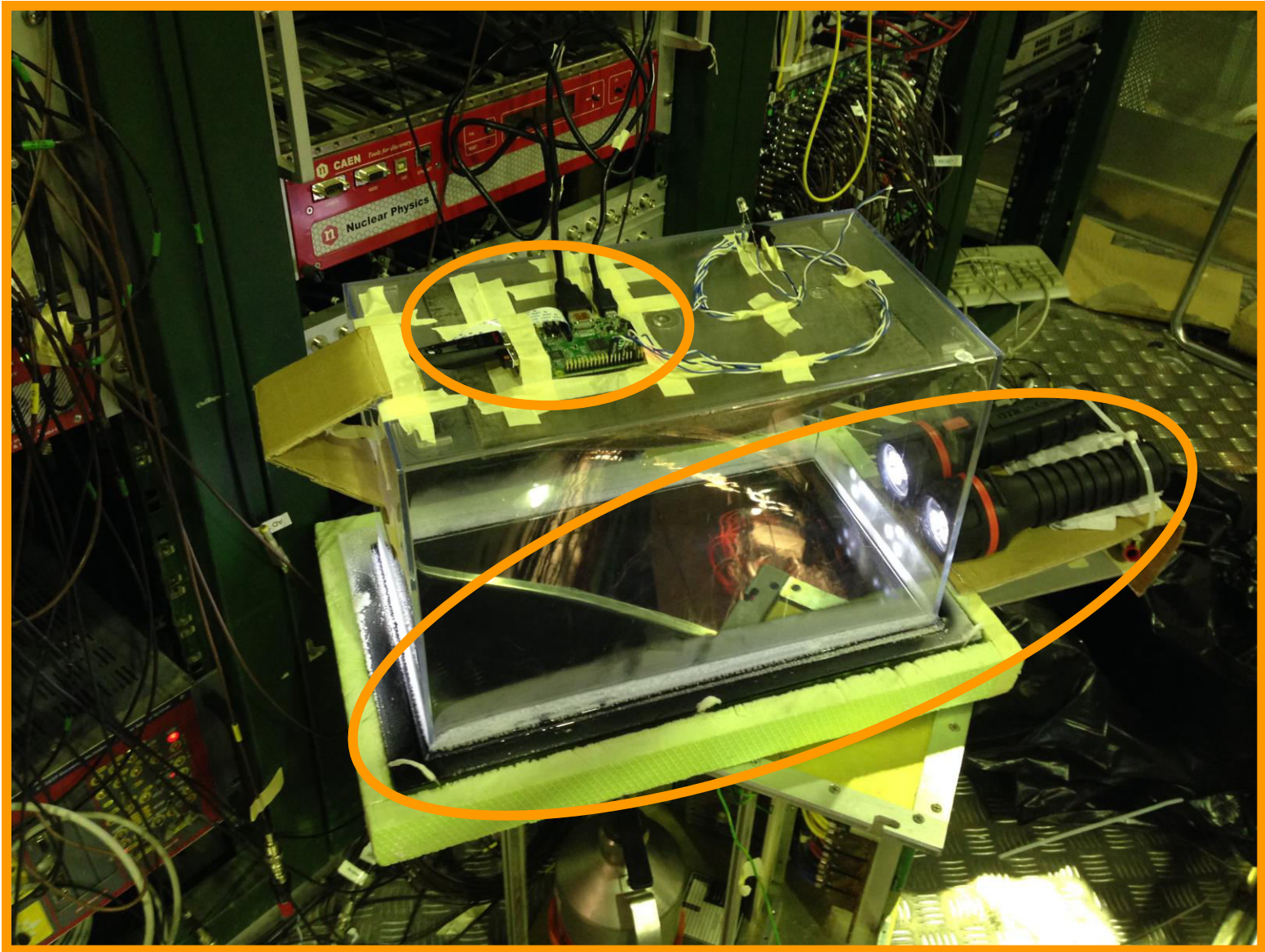


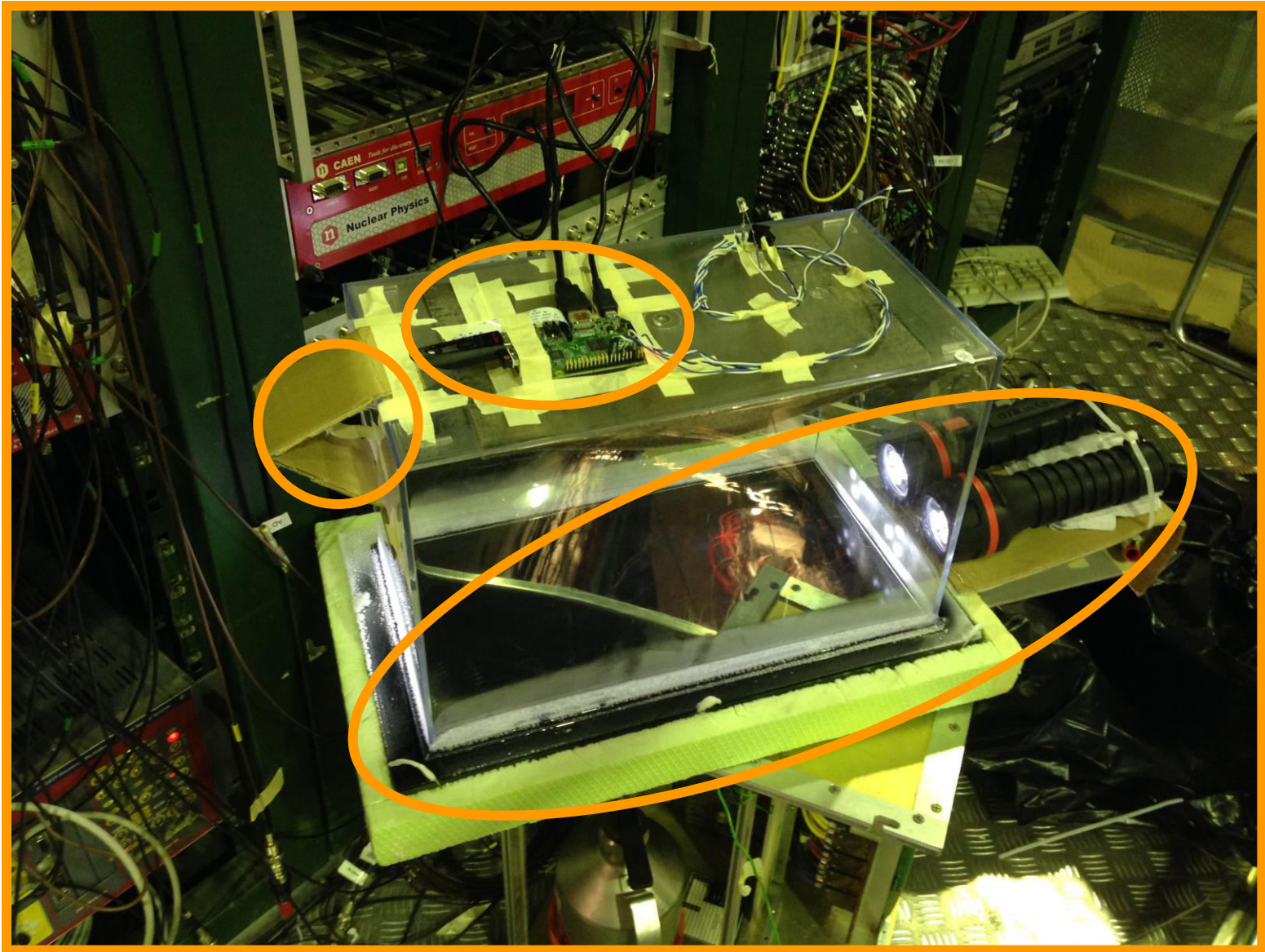


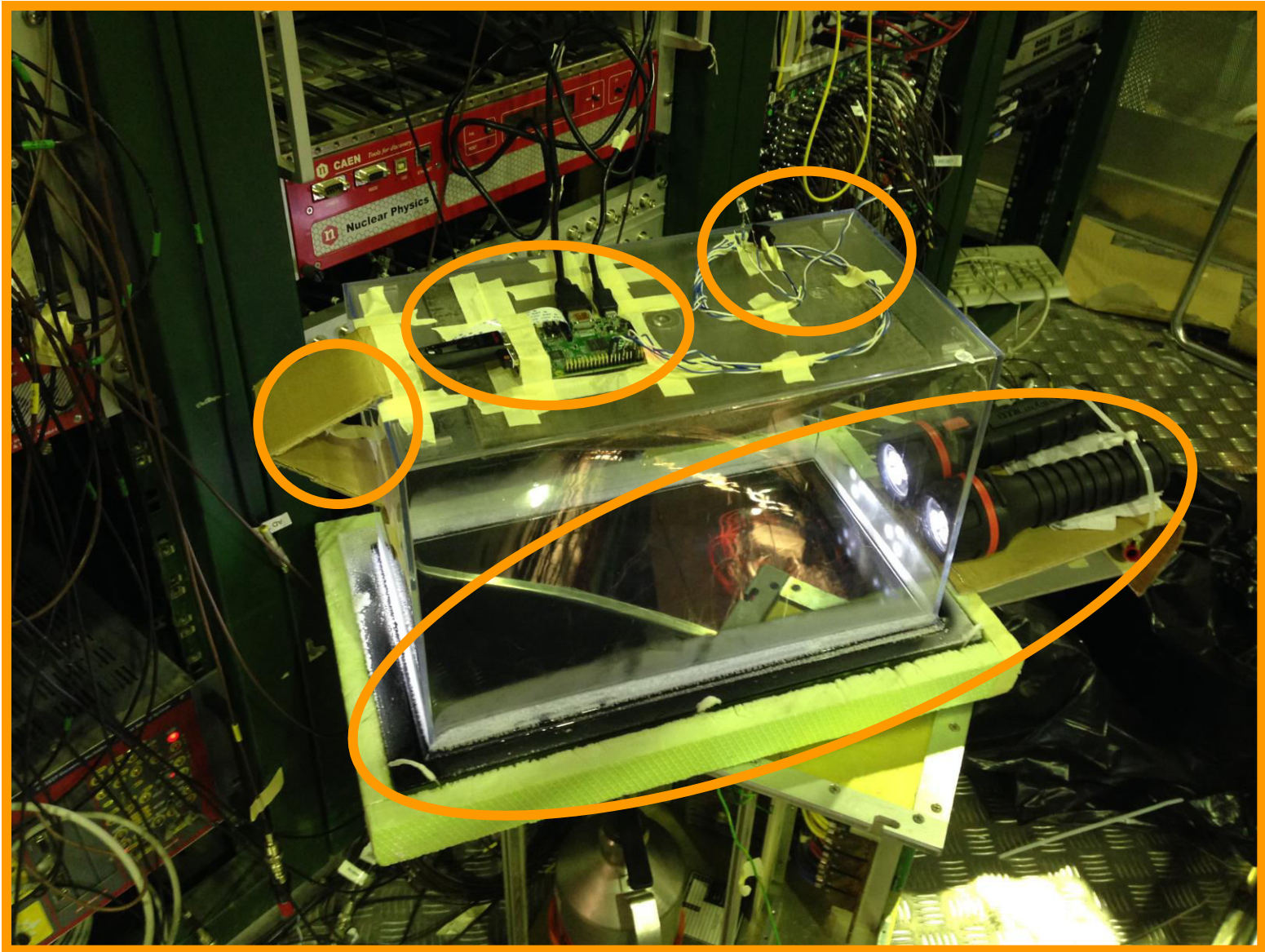






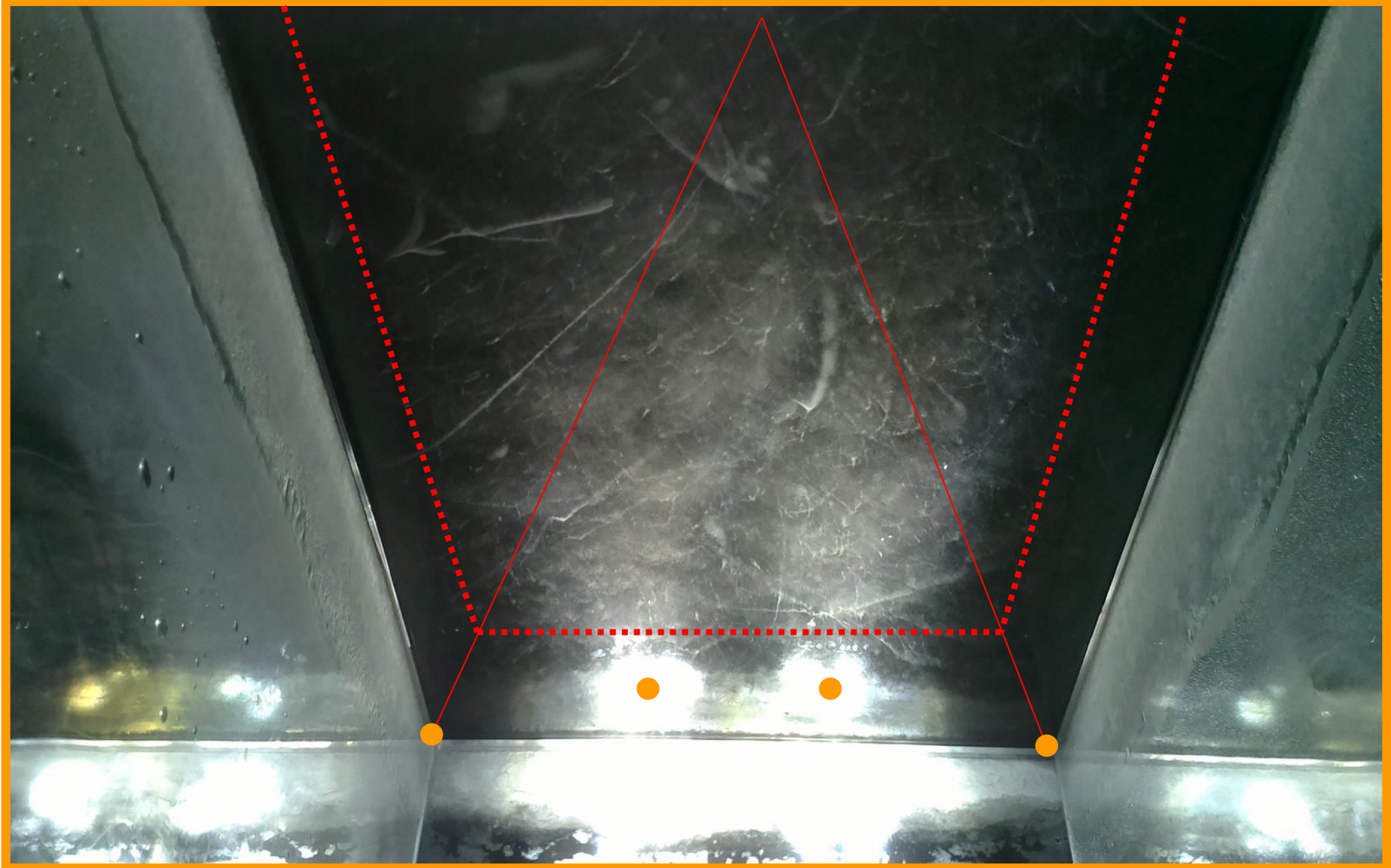














Fabian Schneider





Fabian Schneider

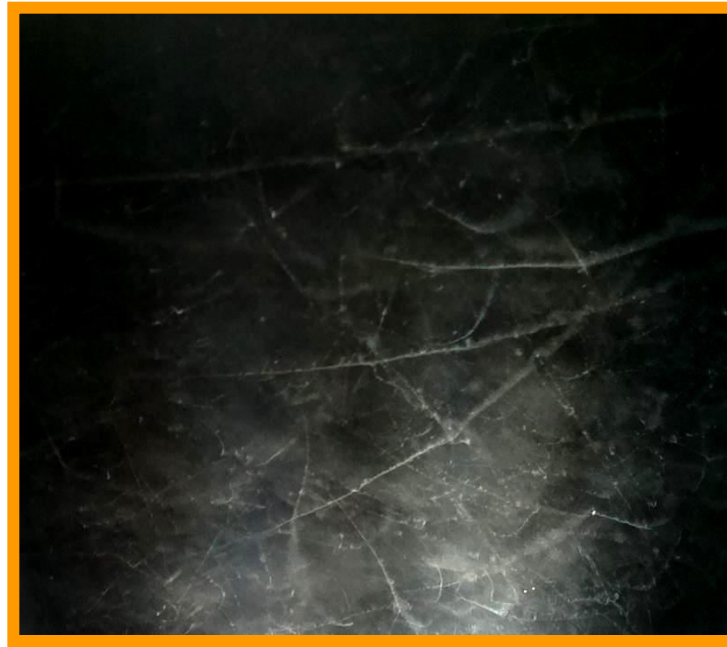






**$> 10.000$**



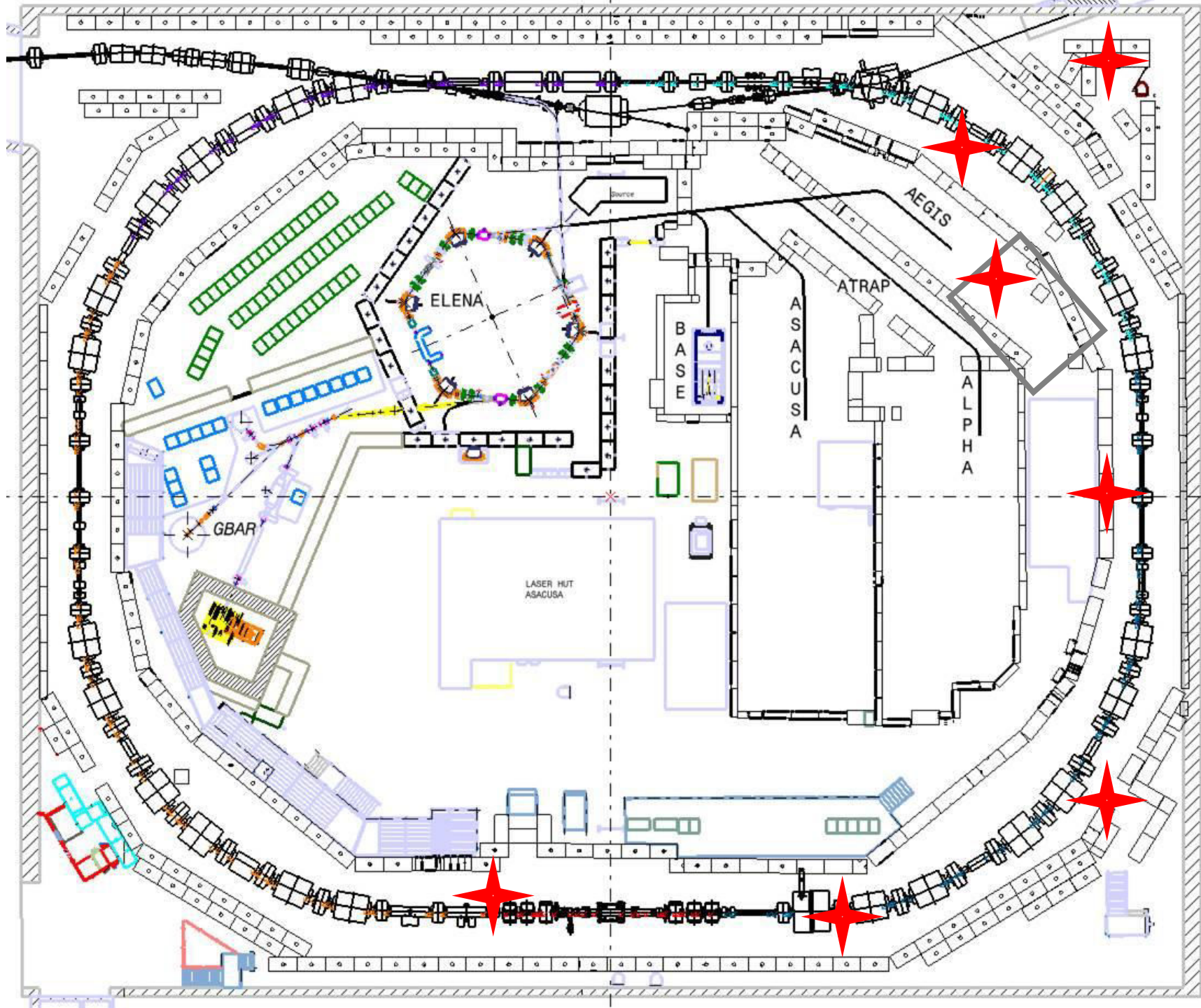


$\mu$ -Events?

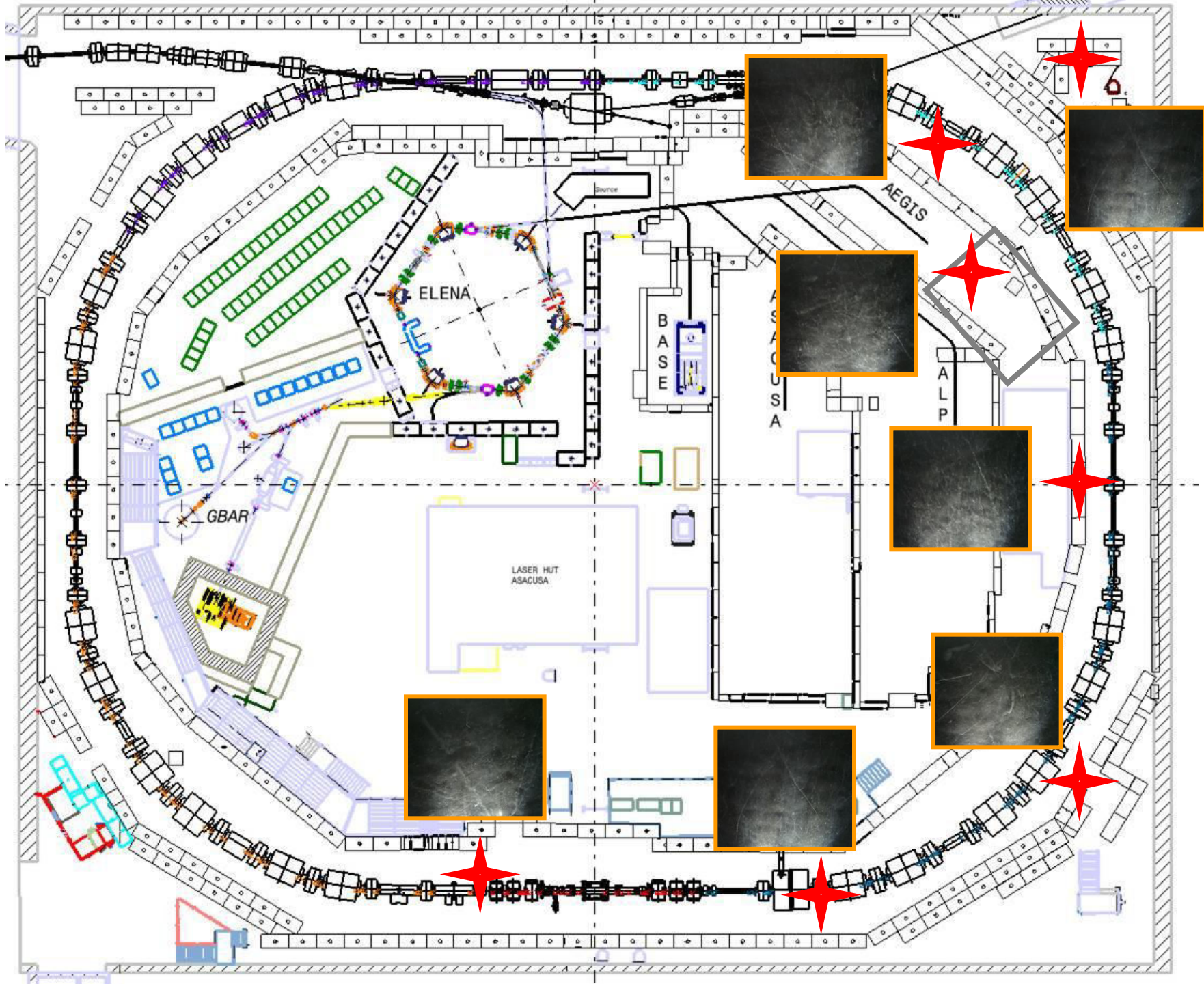
$\mu$ -Strahlenverlauf?

Teilchenidentifikation?









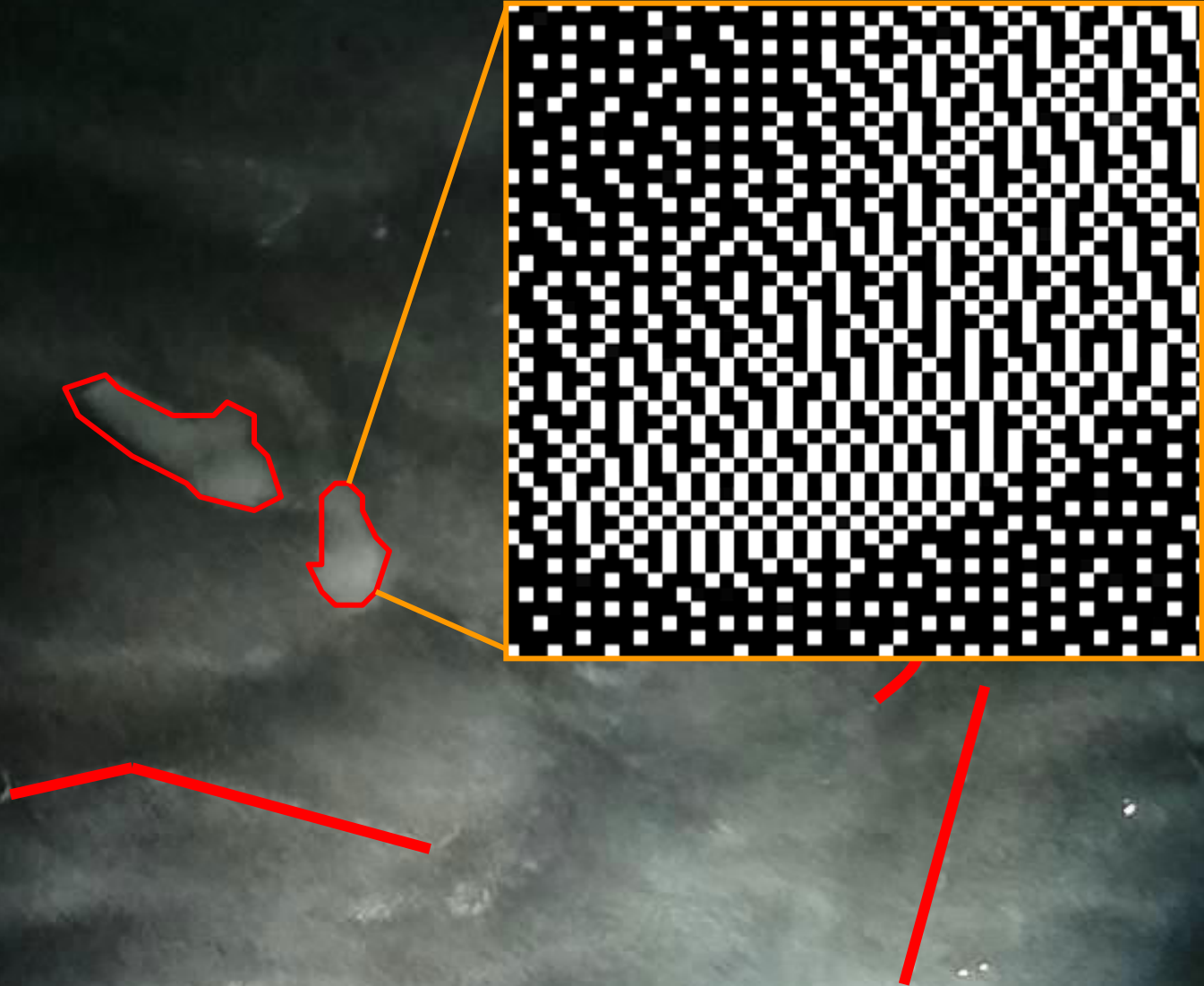




Helligkeit



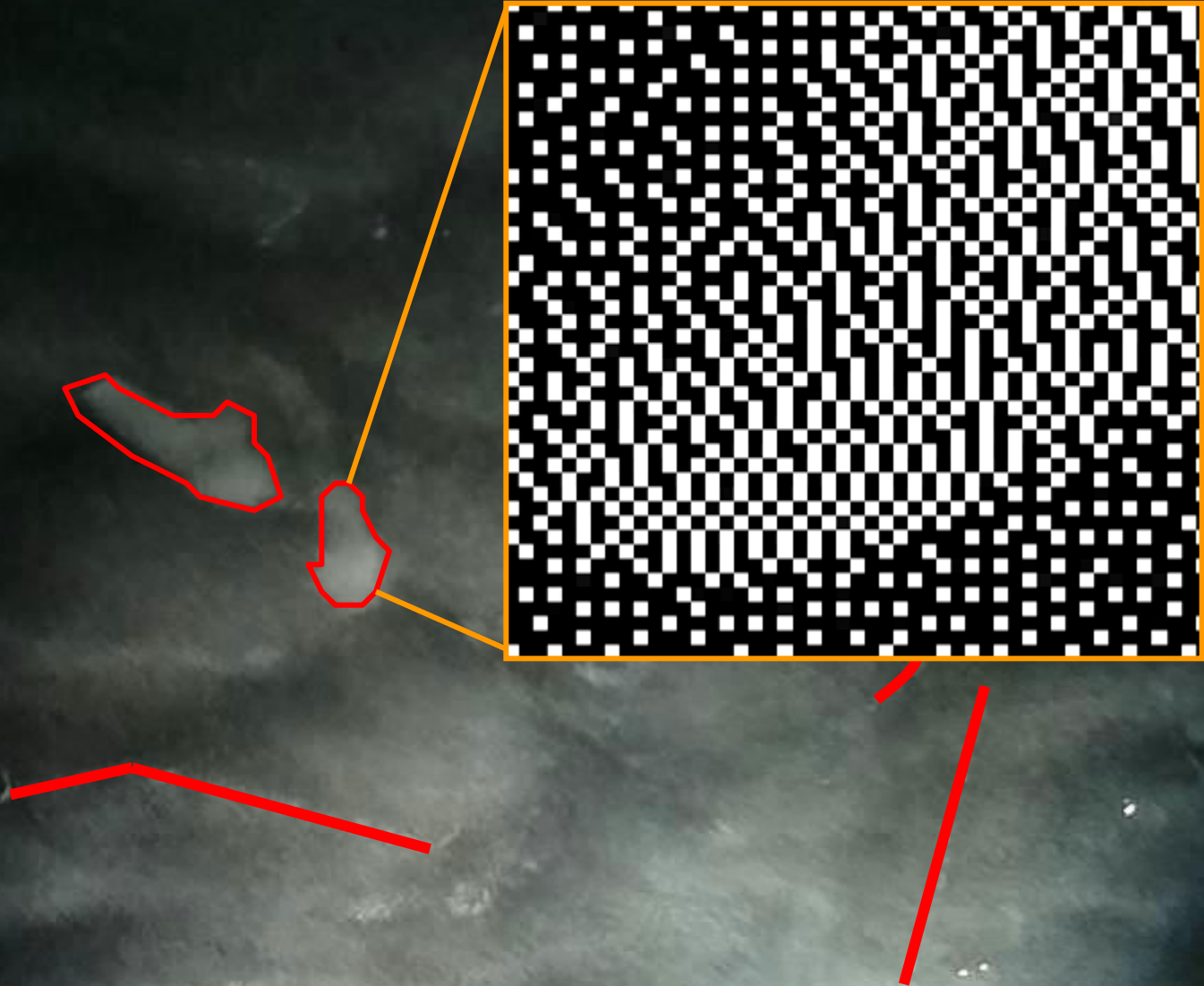
Helligkeit

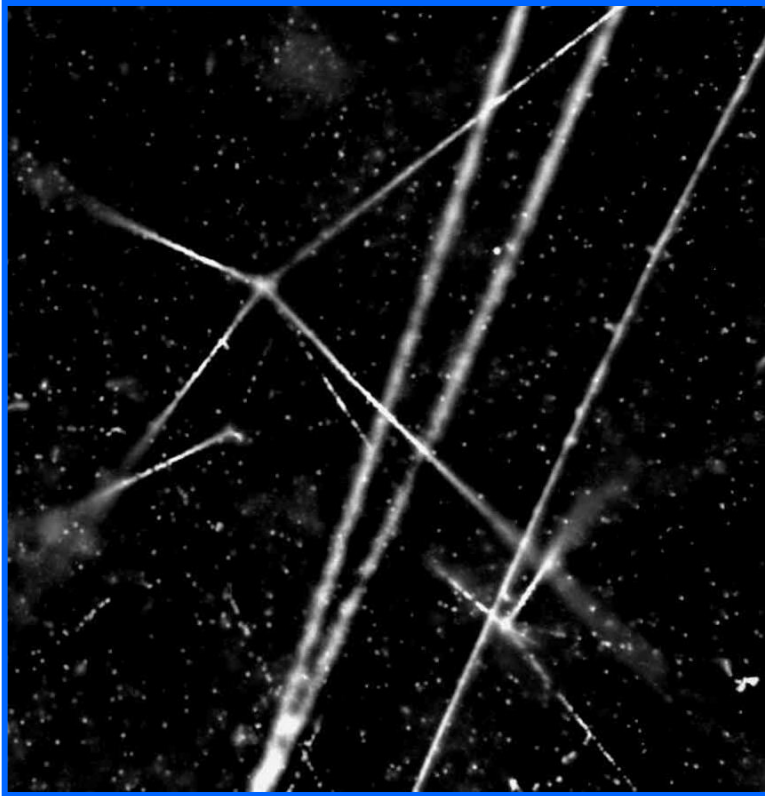


Helligkeit

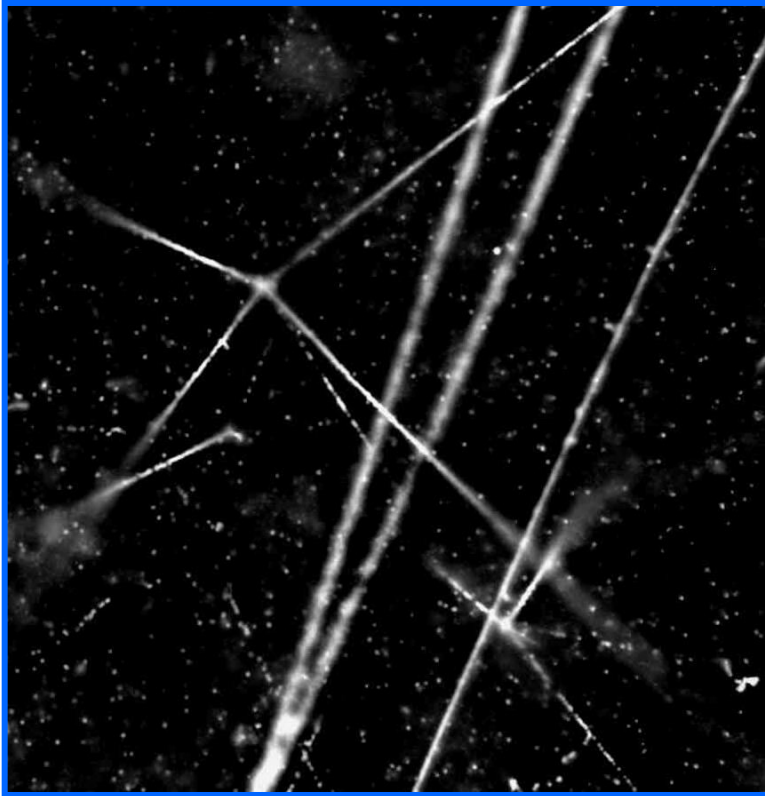
Pixelmuster

Umgebung





**Viele Bilder, Daten, Pixel ...**



**Viele Bilder, Daten, Pixel ...**

**... doch es ist noch viel zu analysieren !!**





**Vielen Dank für eure  
Aufmerksamkeit !**

**Besonderer Dank an Herrn Doser  
(CERN), Herrn Lindner (DESY), Julian  
Fesel (AEgIS) und dem gesamten  
AEgIS Team!**

