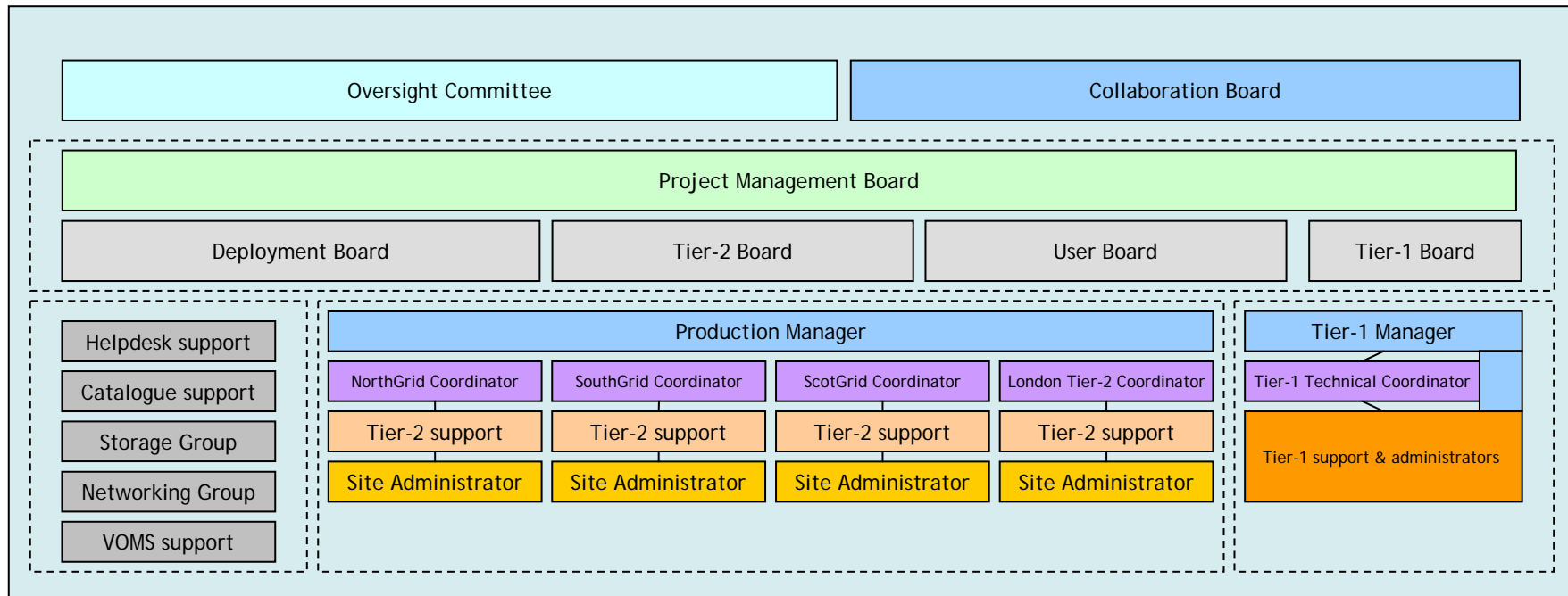
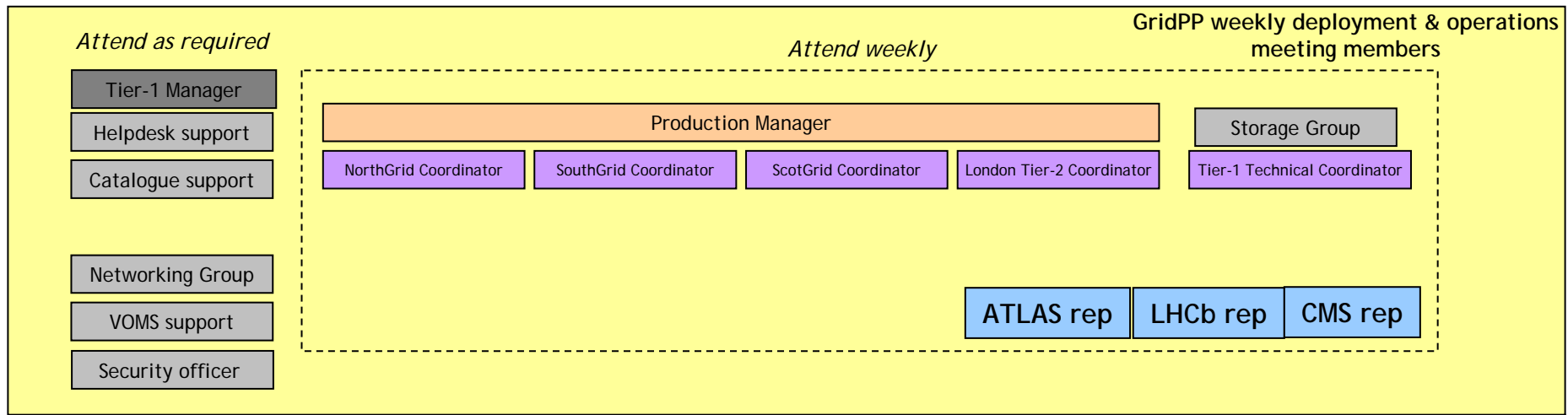


GridPP structure shown yesterday...



## GridPP deployment team - recent improvement in *communications with expts.*



### Example common discussion areas:

#### From experiment representative

- Site X was problematic last week
- Does site Y use PIII machines?
- SE too unstable at site Z
- Component not installed at ...
- Services impacted by downtime of...



#### User tests/input

- Sites I, J, K wrong software version
- RB-1 was problematic
- To where should we report problems!?

#### From deployment team

- Why did so many jobs fail at site A?
- Why do we see these efficiency changes- (i/o)?
- Please can you retry running on site B
- Why is site C not being used
- General Tier-2 issues
- Status of data challenge and need for resources
- What does this log file entry mean!
- WAN/LAN requirements and access methods
- Can we get more data to these underused sites....
- *Was there a problem with these transfers*

### Some input/output areas for discussion topics

SAM-CIC

GGUS

GOC-downtime

EGEE broadcasts

EGEE weekly ops

Tier technical meetings

UK Site admins - monthly meeting

*Other interactions such as expt-Tier-1 specific and GridPP collaboration meetings not shown*