

Open Science Grid

# WLCG-EGEE-OSG Interoperability

Rob Quick

Open Science Grid Operations  
Center - Indiana University

Special Thanks to Rob Gardner your presenter, and  
Torsten Antoni who helped with the original  
presentation this one is based on.

# Outline

- Goals of Interoperability
- Cross Grid Monitoring
- Communication
- Challenges
- Conclusion



Open Science Grid

# Goals of Interoperability

- Seamless operations for users who wish to cross administrative boundaries
  - Users who want to cross grid boundaries need to know the environments, both technical and administrative, will be similar
    - Site Validation and Availability
    - Cross Grid Publication and Notification
    - Trouble Reporting
    - Security Response

## Goals (Cont.)

- Preserving the autonomous boundaries between infrastructures and provide a framework for scalability and defined areas of responsibility
- Communication between operations groups to assure users feel “at home” in all WLCG environments



# Publication and Monitoring

- **BDII**
  - In place at EGEE and OSG
- **SAMs (EGEE testing of OSG sites)**
  - Testing has begun on a single OSG node and is progressing (moderate success with job submission)
    - At this point no modifications have been made explicitly to the OSG node to allow SAM to function
    - I expect a minimal subset of the GLite package will need to be installed to have useful SAM results
  - Problems are being worked through as they are encountered
  - Short term stop in testing while OSG-ITB-0.5.2 is being rolled out
    - Will be restarted on Monday 29 January



# Publication and Monitoring (Cont.)

- VORS (OSG testing of EGEE sites)
  - A single pre-production site is being set up to run OSG critical tests against
  - Problems will be worked through as encountered
- ‘Ops’ VO will be used for all interop testing and monitoring
  - Limited set of users from both EGEE and OSG



# Critical Communications

- Ownership of each communication so each reported problem gets the proper followup and reaches proper resolution
- Critical Updates
  - Relies on communication between operations groups, no formal policy exists
  - This should be a priority
- Security Notification
  - WLCG Security Model has been implemented
- Standard patches and updates
  - With interoperability monitoring we need to be careful that standard patches/updates do not break the tools we are using



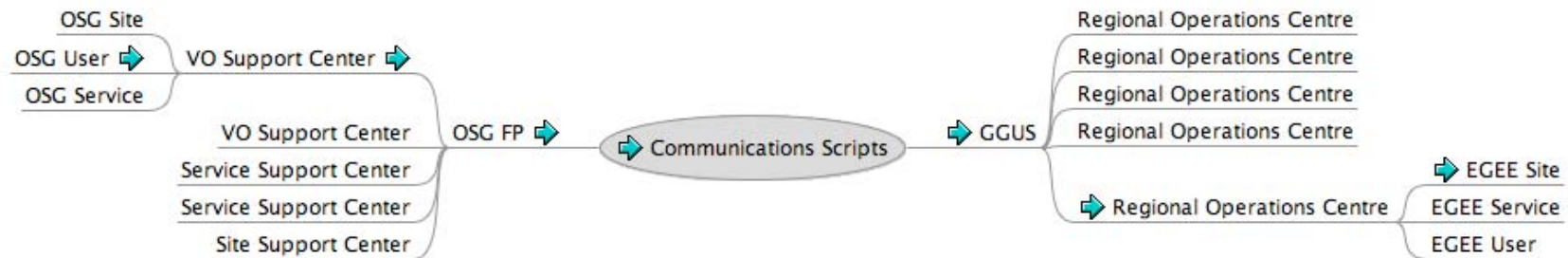
# Trouble Ticket Communication

- Ticketing
  - OSG Footprints
  - Global Grid User Support
  - Each OSG VO and EGEE ROCs individual ticket system
- All these helpdesks/ticketing systems are connected and are used for user support and for operations to formally communicate inside and across the infrastructures

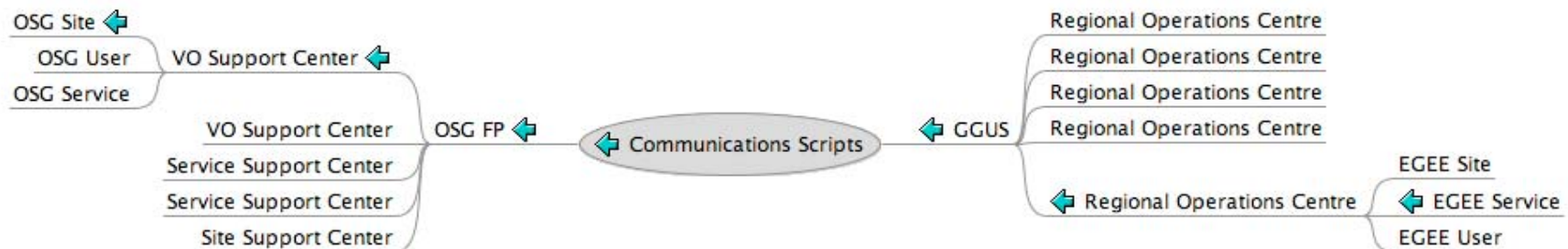


# Ticket Communication

Example: OSG User Communicates with EGEE site



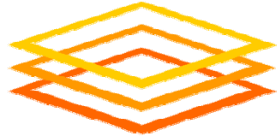
Example: EGEE Service Communication with OSG Site





# Communication and Planning

- Joint Meeting (~every 6 months)
  - Next Joint Meeting, 4-7 June 2007, Indianapolis, IN - US
    - Focus on LHC Data Taking Ramp Up
- Weekly WLCG Operations Meetings
- Individual Communications as Needed
  - Software groups
  - Monitoring groups
  - Operations teams



Open Science Grid

# Challenges

- Different Software Stacks
  - Critical Tests on both sides rely on services that may not be standard parts of the other grids software
    - Example:GRIS will not be a standard on OSG releases > 0.5.1, SAMs tests rely on information used by GRIS
      - GRIS will be installed and can be started on OSG 0.5.2+
  - Binaries and conf files SAM is looking for are not available by default on OSG nodes
    - glite-gridftp-remove, edg-wl-logev
    - A small “OSG WLCG Validation” software package may need to be developed and configured to allow usefull testing by SAMs
  - Environmental structures are different between GLite and OSG stacks

## Challenges (Cont.)

- Policies are different, meshing is not always easy or desired
  - Policies are determined by the project drivers, and these are not always the same
- Ticketed communication is quick, human communication is not always so fast
  - Time differences make it difficult to just pick up the phone and work through problems
  - Face-to-face meetings create a flurry of activity, but it tends to fade between meetings

# Conclusions

- Communications is the key to interoperability and these processes are in place, continuing to refine procedures will be critical to success
- Operations problems are getting solved
- Technical and Monitoring issues are being addressed, this is not always a quick and easy process as we are working with different software stacks
- OSG is committed to interoperability with EGEE, WLCG, and TeraGrid
- With dedicated effort both technical and administrative challenges can be overcome