



# WLCG Service Report

## 3 weeks May 26 – June 16

**WLCG Management Board, 16<sup>th</sup> June 2015**

Maria Alandes  
IT/SDC



# Operations Coordination Highlights (1)



<https://twiki.cern.ch/twiki/bin/view/LCG/WLCGOpsCoordination>

- High activity due to preparation of RUN 2
- And finally fairly smooth start of RUN 2 data taking for all LHC experiments!
  
- ALICE
  - High activity with no major operational issues
- ATLAS
  - Rucio performance very good
  - HLT reprocessing of first week data run successfully
  - WNs particularly slow at Tier-0 due to a bug in Openstack (Internal CERN SNOW ticket INC0796407)
  - Troubles due to FTS Bringonline daemon down (GGUS:114021)
  
- CMS
  - DIGI-RECO campaign progressing very well
  - Global Xrootd re-director at CERN with higher impact and urgency defined in the WLCG critical services table (already updated)
  - EOS issues and bad transfer quality from T0 reported and fixed (several GGUS tickets)
  
- LHCb
  - First offline data workflow processing over the past weekend
  - Ongoing issue with access to SARA storage, could be related to fetch-crl issue discovered recently (GGUS:113766)
  - LHCb has asked to create “tape families” for the Run2 data to T1 sites

# Operations Coordination Highlights (2)



<https://twiki.cern.ch/twiki/bin/view/LCG/WLCGOpsCoordination>

## ■ Middleware

- New GFAL2 2.9.2 fixing the FTS3 bringonline daemon crashes now installed at RAL, CERN, BNL and FNAL
- Issue with Globus library (globus-gssapi-gsi-11.16-1) released in EPEL testing (GGUS:114076)
  - It changes the default behaviour in the way to check whether a host certificate is legitimate or not
  - After discussion with developers, they have released a new version (globus-gssapi-gsi-11.18-1) which defaults to the previous behaviour
    - This is a temporary measure, the WLCG Operations will check on services that may fail with the new default behaviour

# Operations Coordination Highlights (3)



<https://twiki.cern.ch/twiki/bin/view/LCG/WLCGOpsCoordination>

- Tier 0
  - LFC stopped on the 22<sup>nd</sup> of June
  - HTCondor+ARC CEs pilot now published in the BDII and used by experiments
- RFC Proxies
  - Readiness of the WLCG infrastructure for RFC proxies will first be tested through the SAM preprod instance of each experiment
  - The SAM proxy renewal sensor first needs an easy fix to support both RFC and legacy proxies
- Middleware Readiness
  - dCache v.2.10.28 now part of the baseline
  - StoRM verification for ATLAS at CNAF
  - MW Readiness App in production
    - <https://wlcg-mw-readiness.cern.ch/>
    - It will eventually replace the manually maintained baseline table



# Operations Coordination Highlights (4)

<https://twiki.cern.ch/twiki/bin/view/LCG/WLCGOpsCoordination>

- Network and Transfer Metrics WG
  - LHCOPN and LHCONE meshes are stable now and consistently delivering metrics
  - Planning to establish WLCG-wide meshes for all types of tests
  - Network performance incident process is now in place with a new GGUS SU “WLCG Network Throughput” to report any issues
    - [https://twiki.cern.ch/twiki/bin/view/LCG/NetworkTransferMetrics#Network\\_Performance\\_Incidents](https://twiki.cern.ch/twiki/bin/view/LCG/NetworkTransferMetrics#Network_Performance_Incidents)

# Selected items from Operations

<https://twiki.cern.ch/twiki/bin/view/LCG/WLCGOperationsMeetings>

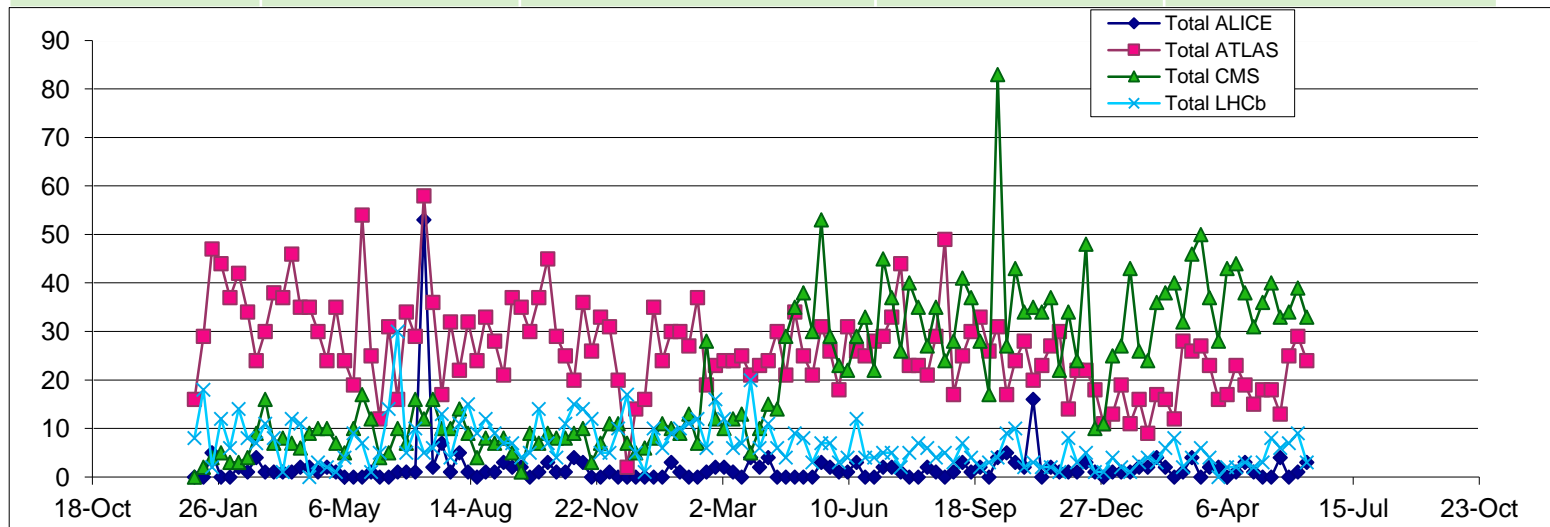


- OSG BDII unavailable for several hours. Only one site affected in monitoring statistics
- Faulty router at CERN caused network issues affecting the whole infrastructure and some grid services
- Ongoing issue in CMS with slow transfers from P5 to CERN. Still being investigated by experts



# GGUS summary (3 weeks 25/5/15 -14/06/15)

VO	User	Team	Alarm	Total
ALICE	1	3	0	4
ATLAS	14	62	2	78
CMS	106	0	0	106
LHCb	1	18	0	19
Totals	122	83	2	207





# Significant events

- No GGUS release
- Next release scheduled for 24<sup>th</sup> June
- 2 alarms during this period





## ATLAS ALARM GGUS:114021 CERN-PROD FTS bringonline daemon

What time UTC	What happened
2015/6/01 10:54	Initial submission. Type of Issue: File Transfer Site: CERN-PROD Bringonline daemon seems to be dead
2015/6/01 11:23	Service manager acknowledges the ticket, and restarts the daemon
2015/6/01 13:58	Service manager closes the alarm. There is an open ticket about this error, and the service manager is waiting for a fix from the developers



## ATLAS ALARM GGUS:113911 BNL-ATLAS - FTS server bringonline daemon dead

What time UTC	What happened
2015/5/26 10:02	Initial submission. Type of Issue: File Access Site: BNL-ATLAS
2015/5/26 10:08	Service manager acknowledges the ticket
2015/5/26 10:17	Service has been restarted
2015/5/26 20:35	Service manager closes the ticket



# Availability Reports

- The official Availability and Reliability archive is maintained by the WLCG Project Office
  - <https://espace2013.cern.ch/WLCG-document-repository/ReliabilityAvailability>
  - Recomputations might still change some results