

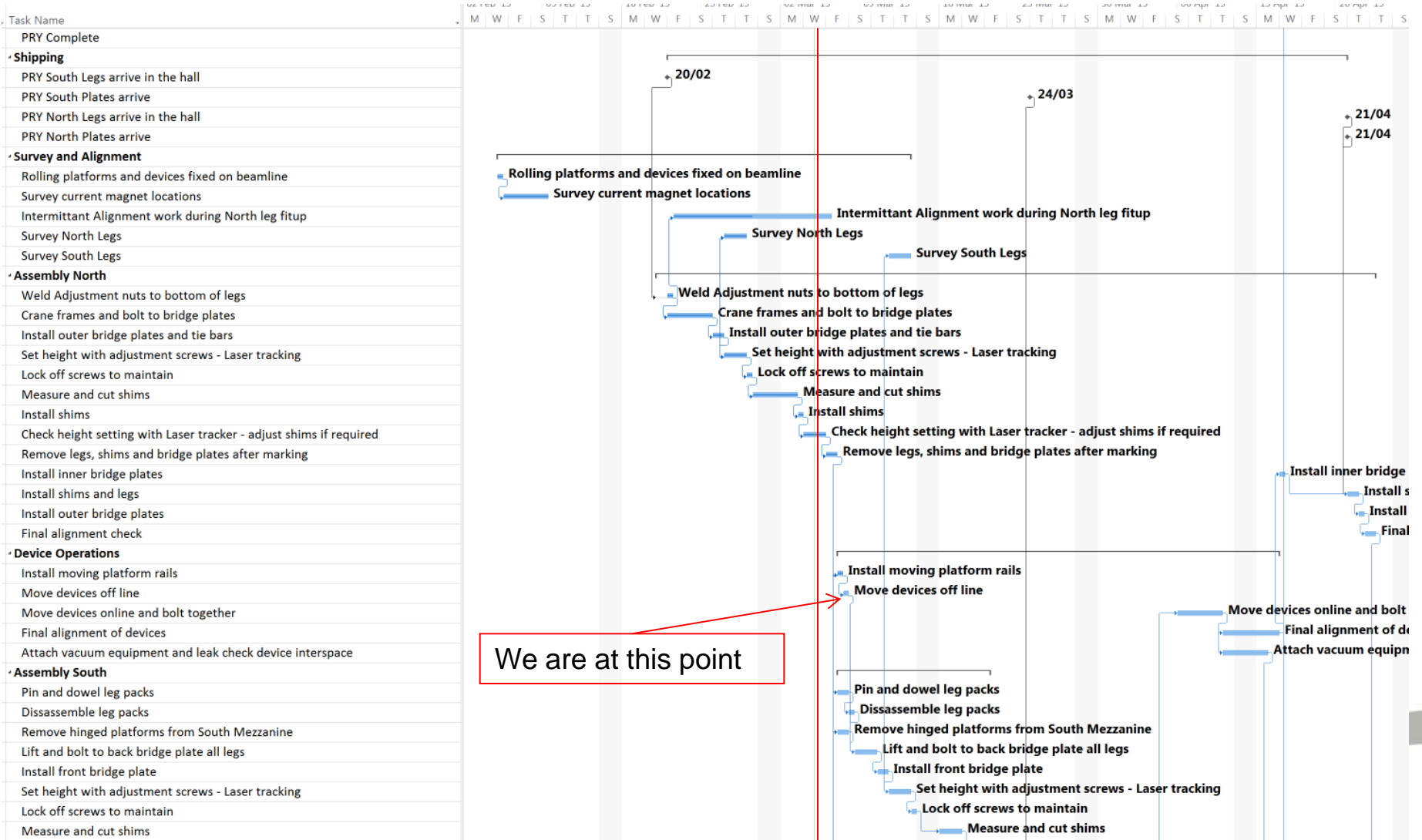
Schedule and Work



- We are moving into a very intensive 4 months with a lot of work to be carried out
 - Electrical services to the devices – *after the South wall has been installed*
 - Magnet instrumentation – *80 cables installed in the next few weeks*
 - Solenoid Cold heads and and power feedthroughs – *Toward end of March, technicians from LBNL*
 - Magnet cooling services and routing structure – *Material on site and installation starting mid March, team from Daresbury Lab.*
 - Partial Return Yoke frame setup – *North done, setting up South being prepared*
 - Partial Return Yoke main plates – *Arriving within 6 weeks*
 - Moving and aligning the magnets – *Initial surveys taken, detail being investigated*
- With all these groups wanting time in the hall it will get very busy, very quickly.
- Safety of personnel, and equipment, during these times will be paramount
- A detailed plan is in production to allow all groups
 - Time to carry out their work
 - Space to carry out their work
 - Expert and technical staff on hand to enable the group to complete, eg Crane operation
- Job card system is underway and is being followed by JG for the work prioritised for each week
- Adhoc working will be given a low priority – A plan of work should be sent to John, Andy or me
 - We understand there will be times when access is required on very short notice
 - These access requests will be addressed as they arise
 - Project tourism will need to be planned – no wandering around

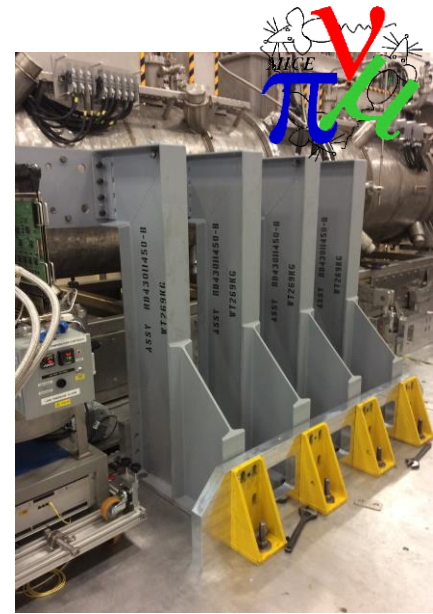


Schedule and Work



Schedule and Work

- Arrival of South PRY plates – 24th March (20th -31st)
- Arrival of North materials – 21st April (10th – 28th)
- South side PRY installation complete around Spectrometer Solenoid Magnets – 3rd April
- All devices on line and bolted together – 14th April
- South side Focus Coil PRY Section installed – 15th April
 - At this point the South side Trackers can be worked on for fitting waveguides
 - Power lines and instrumentation to devices can be completed
 - Cooling line structure can be completed and cold head hoses run
 - Vacuum lines to be finally installed to devices
- North side PRY installation complete – 11th May
 - North side Tracker waveguide installation to be done at this point.
- Completed PRY installation of the end plates and cross bars – 25th May
 - Step IV Construction completed milestone – 2nd June
- *The timescales input to the schedule for the plate installation tasks are in the length of days. An extract from the schedule is below.*
- *At Keller (manufacturing site) the South side plates fit check was completed in 2 hours*



Assembly South Plate	18.5 days	M
Install the lower support arms	1 day	M
Assemble lower sections of the PRY	3 days	M
Install Diagonal supports for upper sections	1 day	M
Install upper South sections	3 days	M
Install upper and lower plate connectors, end plate brackets and cross bar	2 days	M
Install Focus coil PRY section	2 days	M

