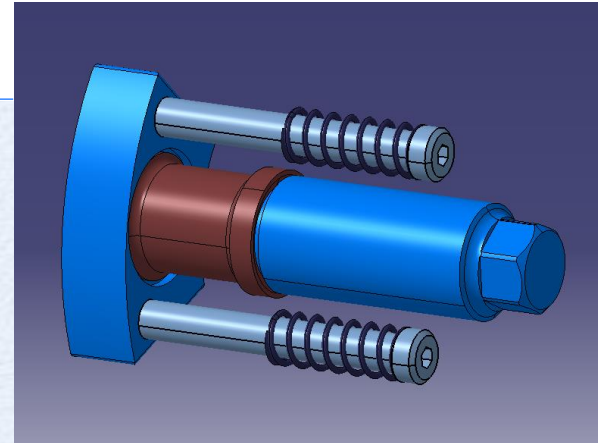
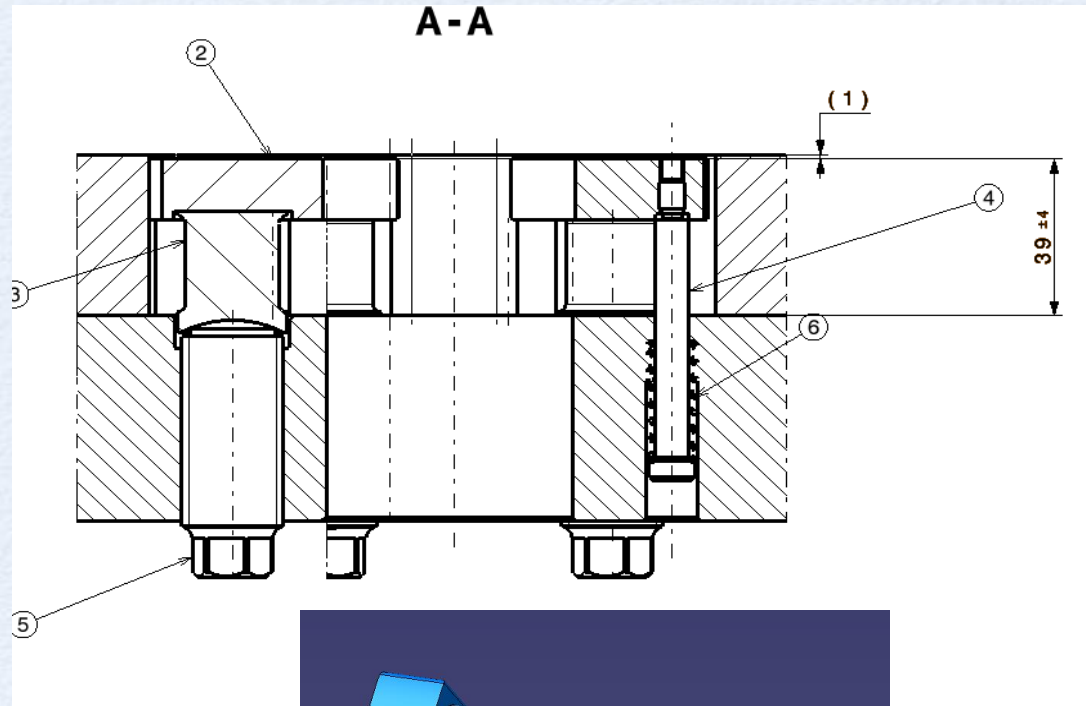
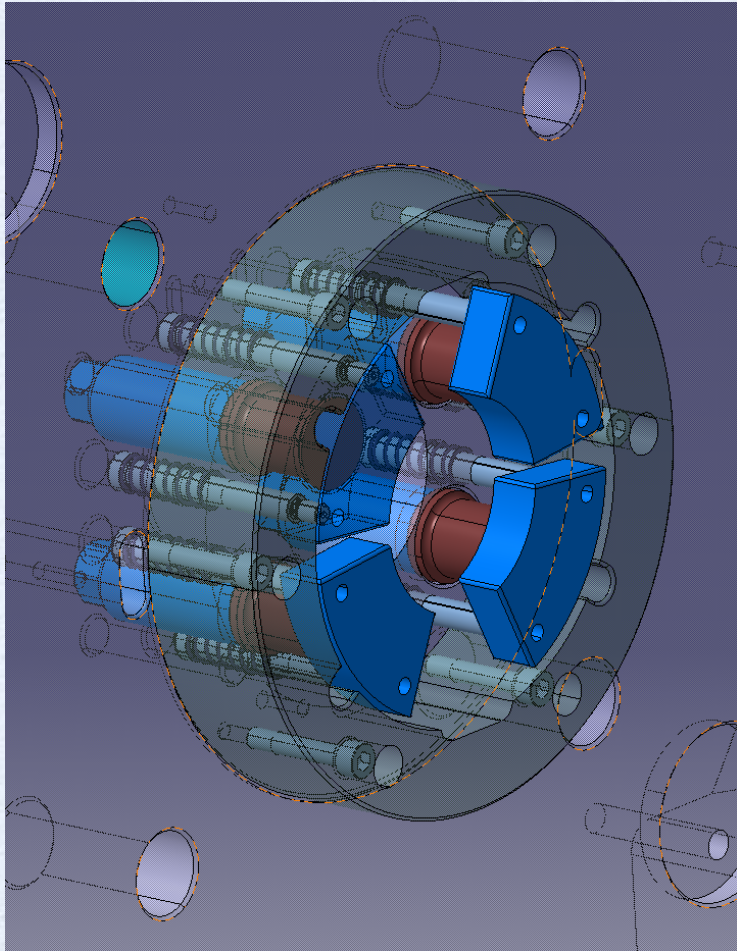


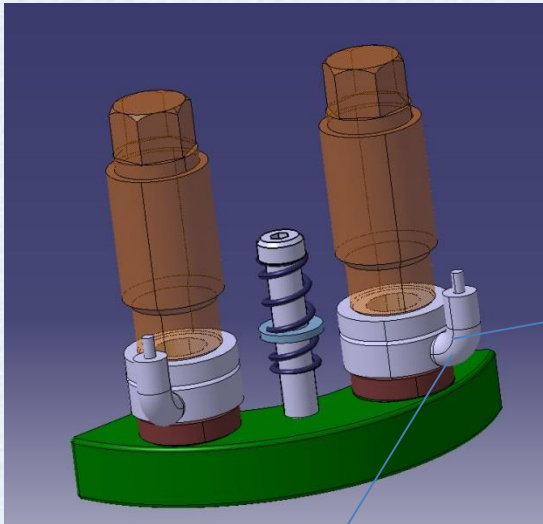
11 TESLA DIPOLE BULLET GAUGES

STUDY OF A NEW CONCEPT OF BULLET GAUGES TO REDUCE THE LENGTH OF THE MAGNET AND GUARANTEE MEASURES.

11 TESLA 1 IN 1- DESIGN ACTUAL



NEW CONCEPT WITH STANDARD GAUGES



MODIFICATION OF OUTPUT CABLE 90
CHECK WITH THE SUPPLIER



KMR

Force washer for monitoring tasks

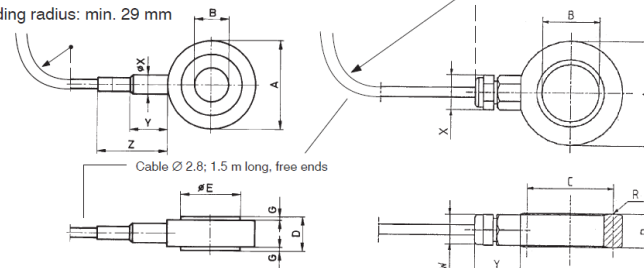
Special features

- Measuring washer
- Nominal (rated) force 20 kN ... 400 kN
- Degree of protection IP 67
- Stainless steel
- Good reproducibility

Dimensions (in mm; 1 mm = 0.03937 inches)

KMR; 20kN, 40kN, 60kN

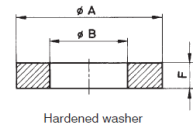
Bending radius: min. 29 mm



KMR; 100 kN, 200 kN, 300 kN and 400 kN

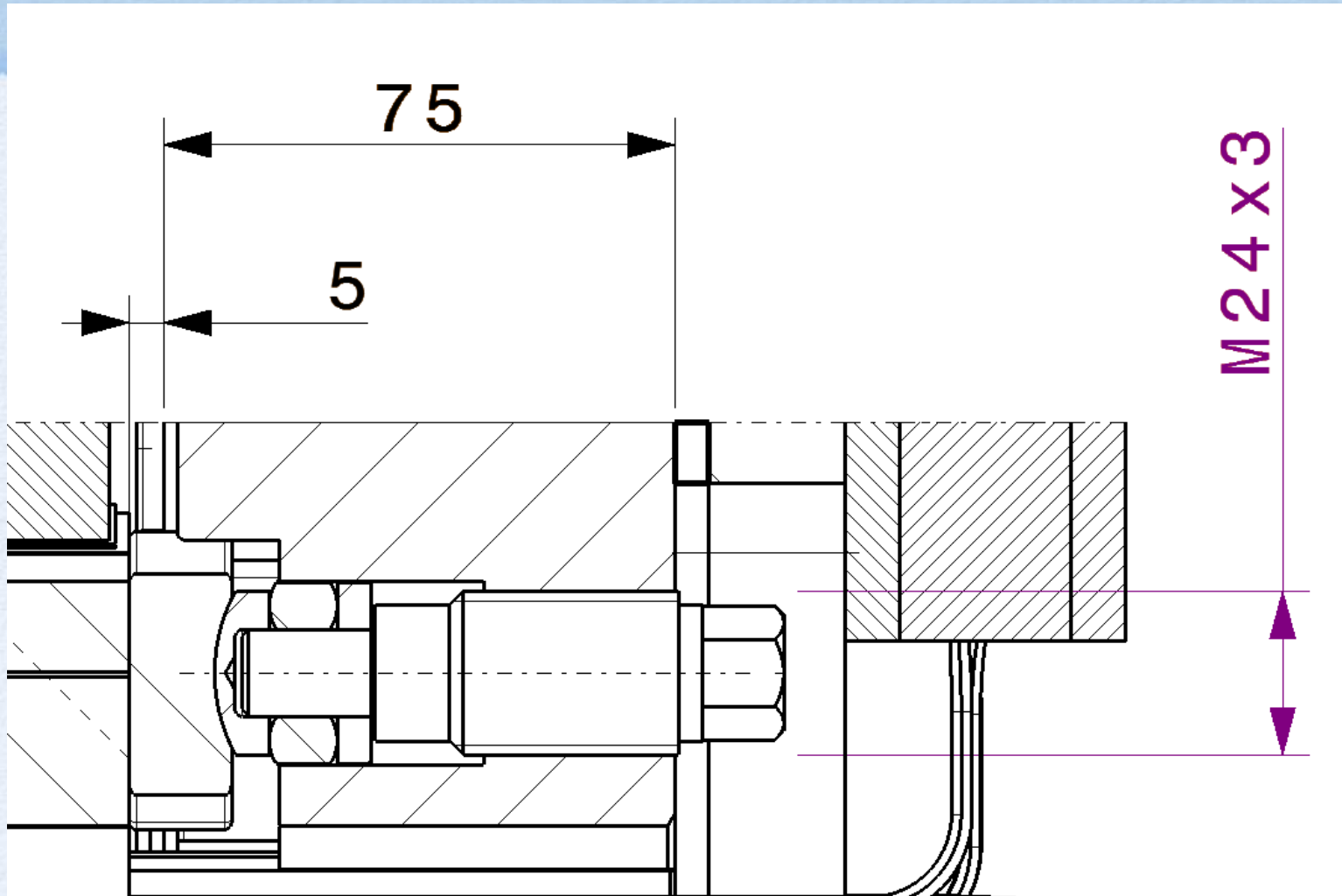
(with PG gland and sphere radius R) **KMR cable assignment**

| Assignment | Cable wire color |
|-------------------------------|------------------|
| Measurement signal (+) | white |
| Measurement signal (-) | red |
| Bridge excitation voltage (+) | blue |
| Bridge excitation voltage (-) | black |
| Shielding | yellow |

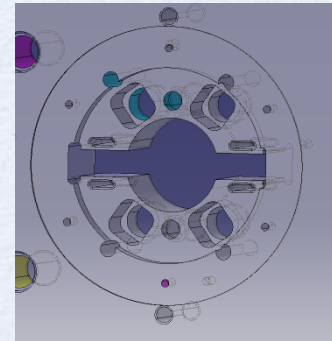
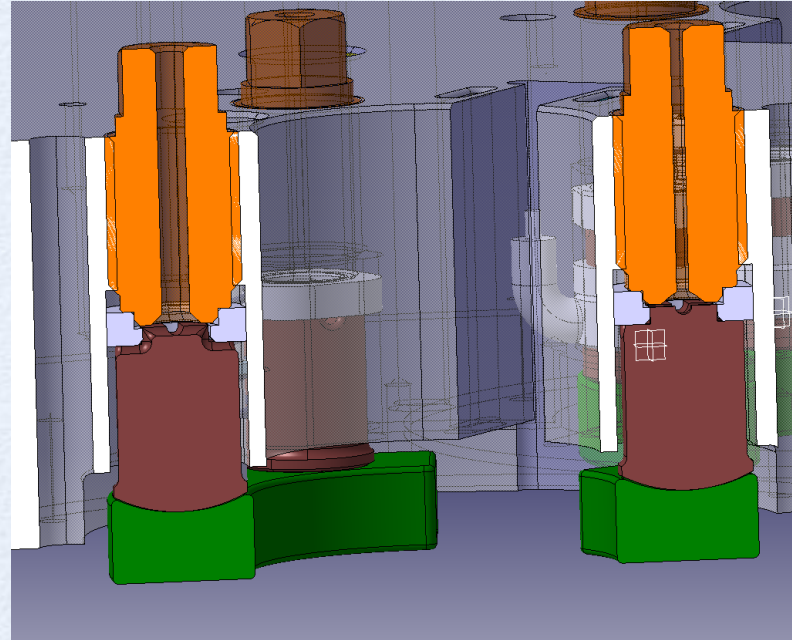
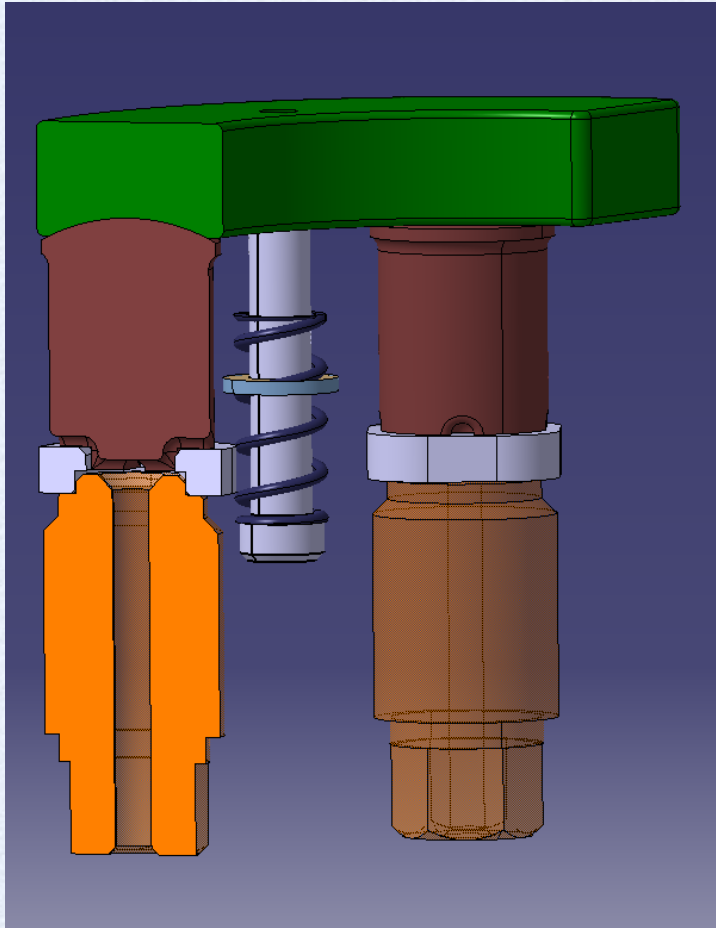


| Nominal (rated) force in kN | Ø A ^{-0.1} | Ø B ^{+0.1} | C | D | E | F | G | R | X | Y | N | for screws | SW |
|-----------------------------|---------------------|---------------------|-------|------|----|---|-----|----|--------------|--------------|------------|------------|----|
| 20 | 17 | 6.5 | - | 6 | 9 | 3 | 0.5 | - | approx. 6 | approx. 11.5 | approx. 25 | M6; 1/4" | - |
| 40 | 21 | 8 | - | 6 | 13 | 3 | 0.5 | - | approx. 6 | approx. 11.5 | approx. 25 | M8; 5/16" | - |
| 60 | 24 | 10 | - | 8 | 16 | 4 | 0.5 | - | approx. 6 | approx. 11.5 | approx. 25 | M10; 3/8" | - |
| 100 | 26.5 | 12.7 | 19.75 | 10 | - | 5 | - | 6 | approx. 10.5 | approx. 14.5 | - | M12; 1/2" | 9 |
| 200 | 31 | 16 | 25.5 | 10 | - | 6 | - | 8 | approx. 10.5 | approx. 14.5 | - | M16; 5/8" | 9 |
| 300 | 37 | 21 | 31.5 | 10.5 | - | 6 | - | 9 | approx. 10.5 | approx. 14.5 | - | M20; 3/4" | 9 |
| 400 | 46 | 25 | 38 | 12.5 | - | 8 | - | 10 | approx. 10.5 | approx. 14.5 | - | M24; 7/8" | 9 |

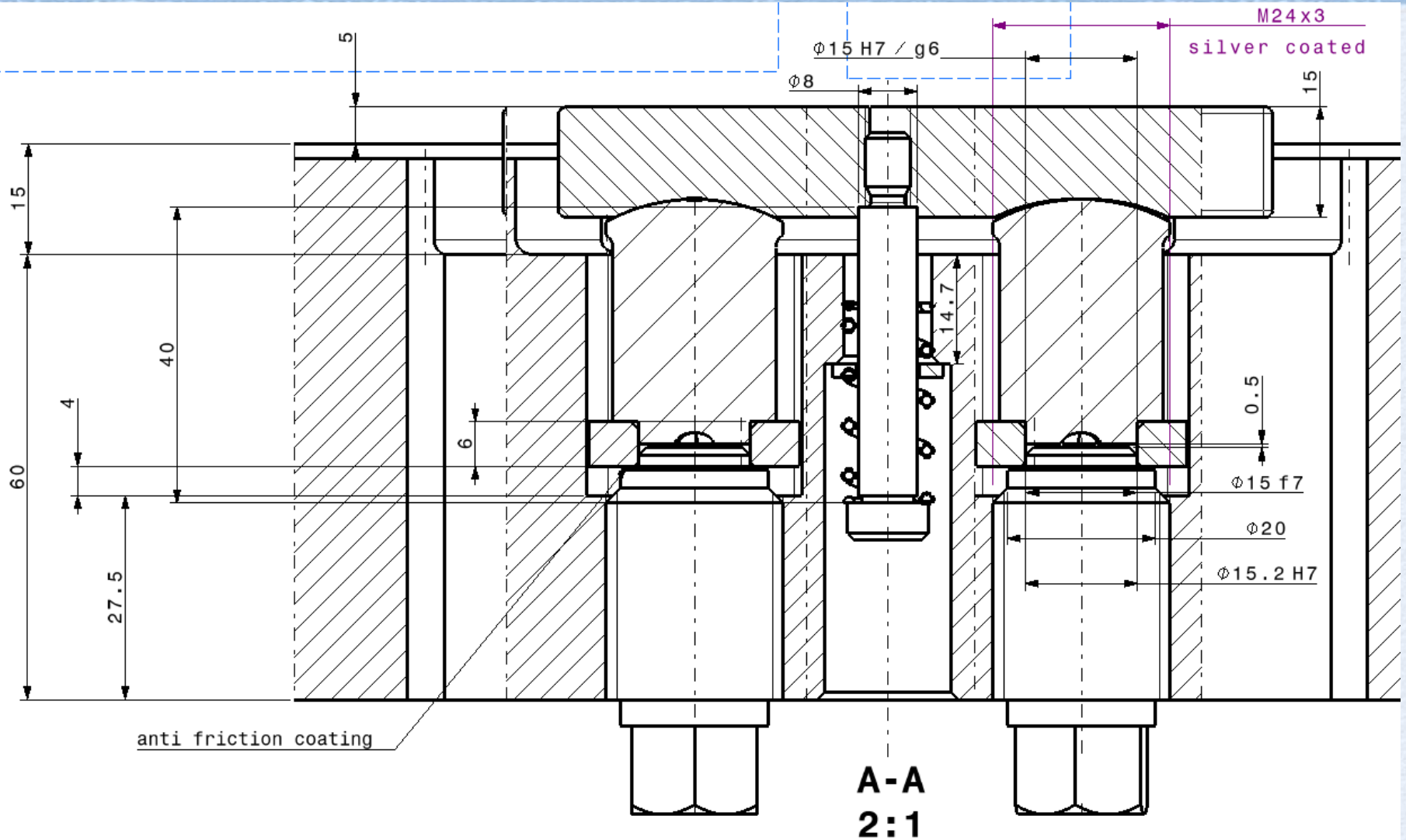
NEW CONCEPT WITH STANDARD GAUGES



NEW CONCEPT 2



NEW CONCEPT 2



NEW CONCEPT 2

