

Atlas Event Index – WP2 Data collection and Retrieval. An update

Álvaro Fernández, Santiago González, Javier Sánchez

Instituto de Física Corpuscular (IFIC)
Universitat de València - CSIC

Producer code changes

00-02-07 → 00-02-08

- Allow input types: 'POOL', 'AOD', 'ESD', 'EVNT', 'HITS', 'RDO' and 'AOD_MRG'
- Add changes to allow EI to be imported as a substep
- .AODMergeEI_tf.py: Merge + EventIndex in one pass. Do not use in production
- sendEI.py: add GUID in message header (zero events DAOD file processing).

Producer code changes

00-02-08 → 00-02-09

- sendEI.py: modify logic to allow multiple file processing

00-02-09 → 00-02-10

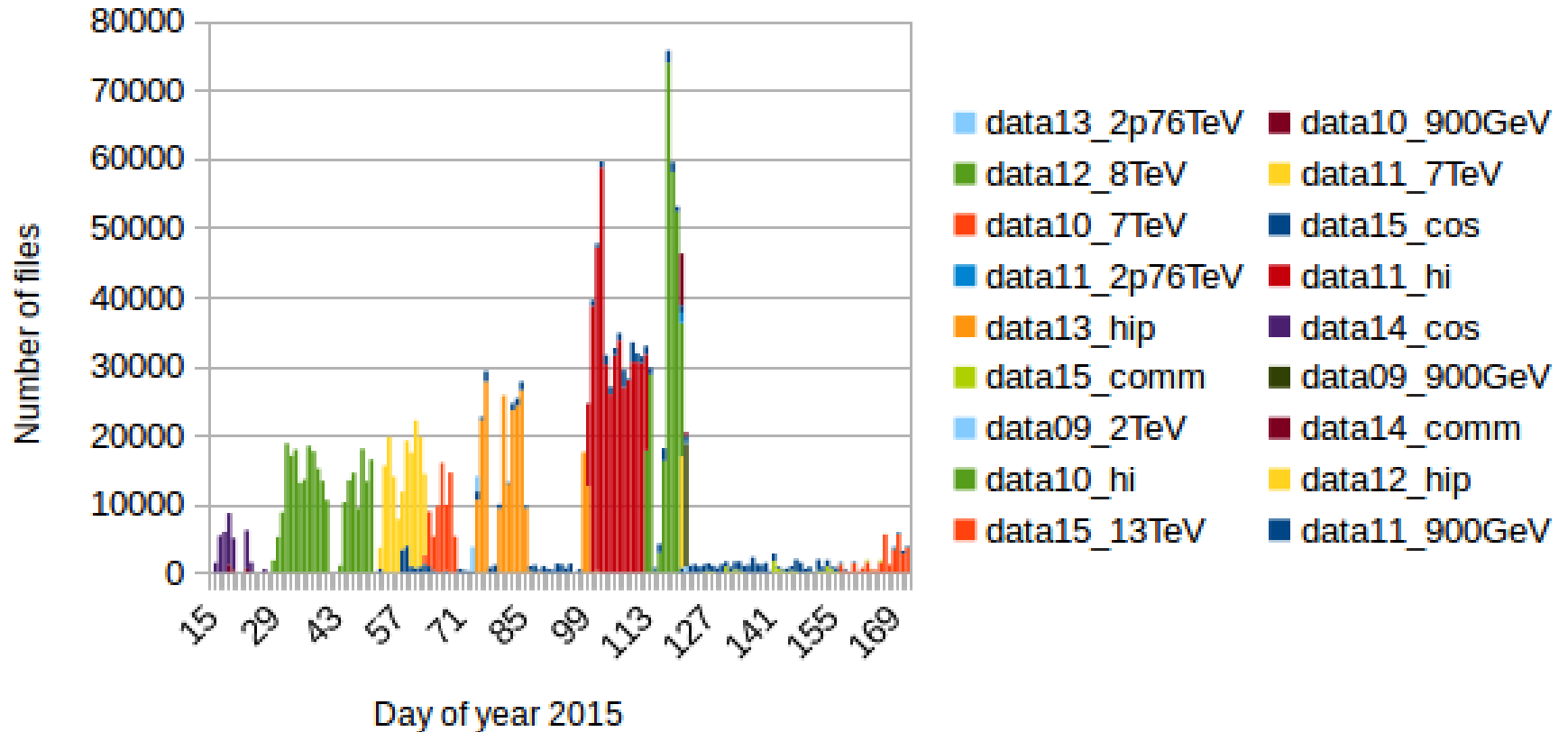
- added `workaround` for `reading`
`coral::Attribute::data<string>` for ROOT6

TODO

- xAOD processing
- MC
- Add persistency to messages
- Possible python messaging library upgrade

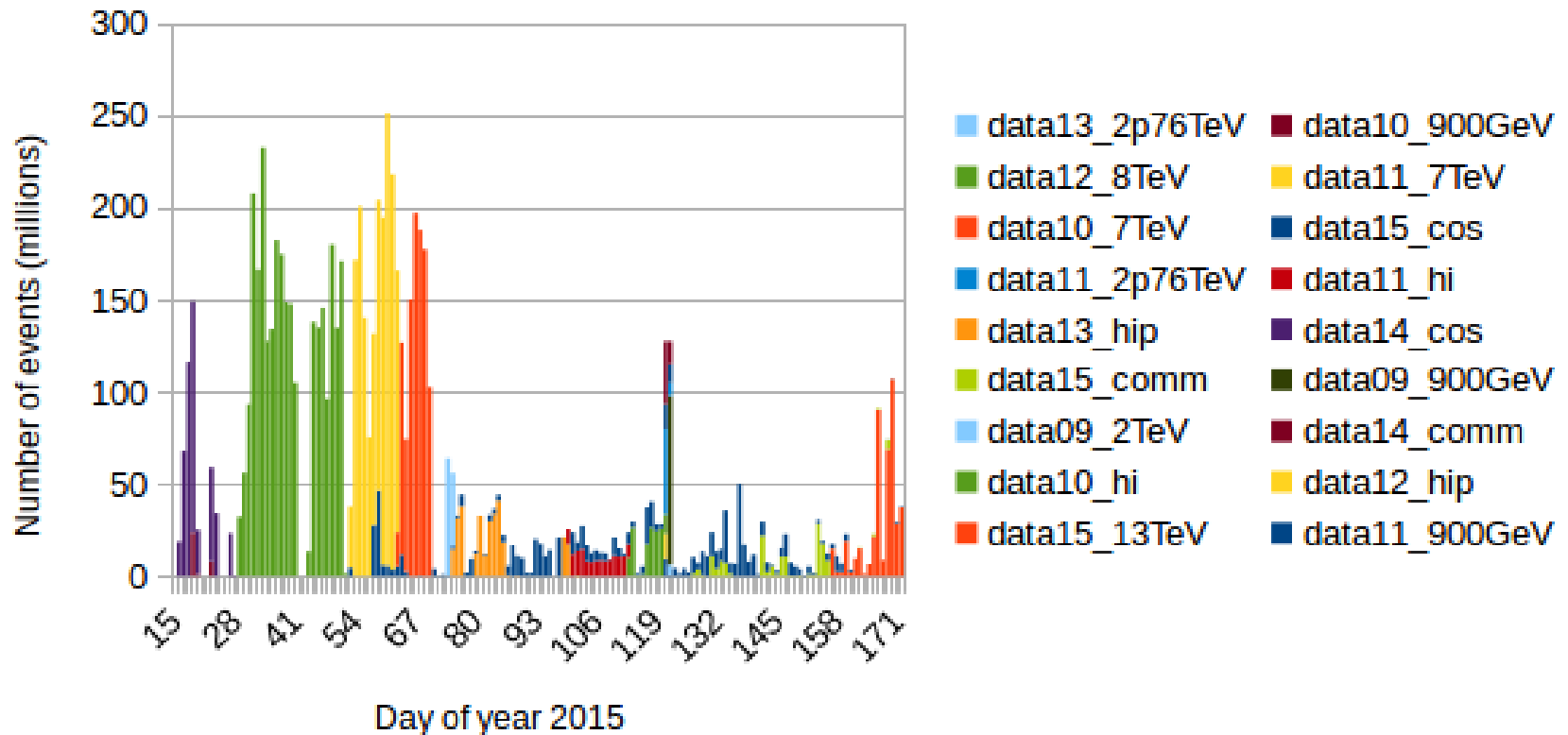
Data processing

Data processing



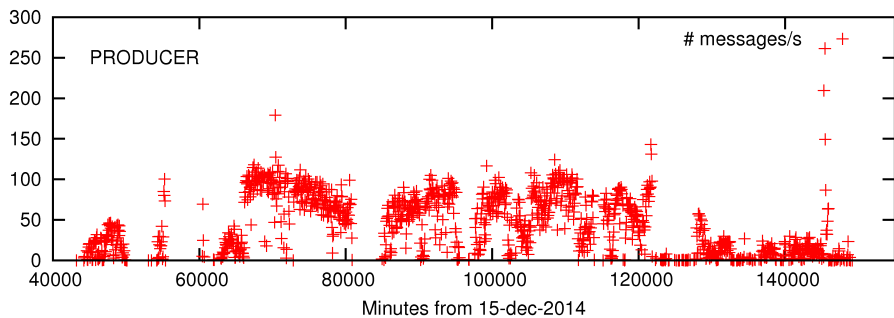
Data processing

Data processing

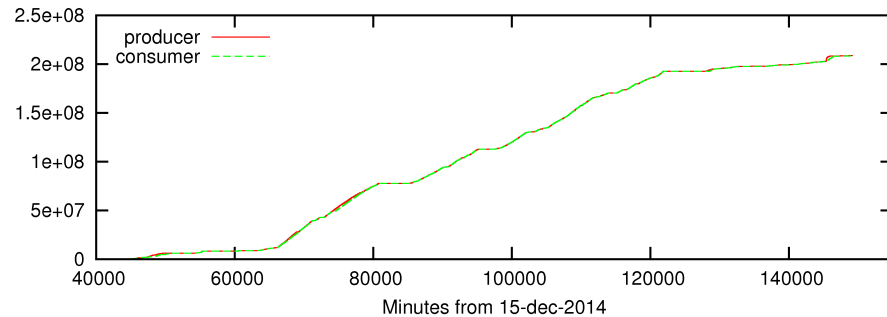


Performance

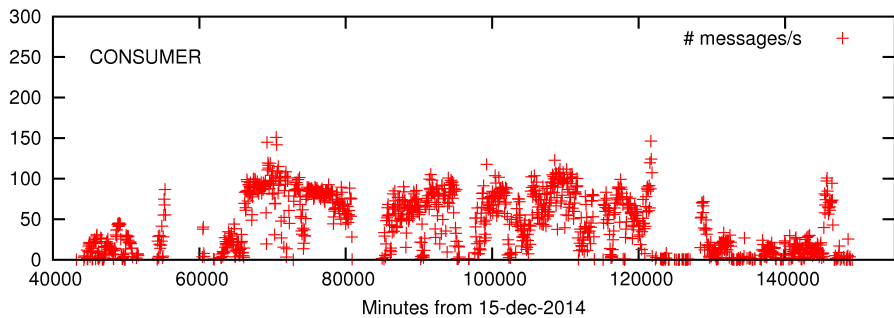
Bandwidth



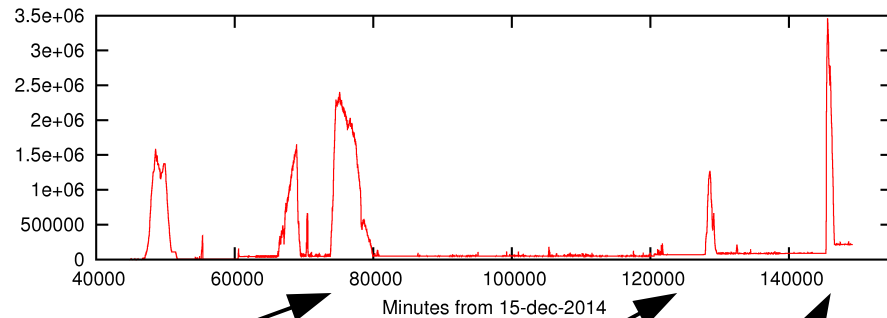
Total messages



Bandwidth



Queued messages



Some backlog due to consumer performance
Improved later with a refinement of writing algorithm

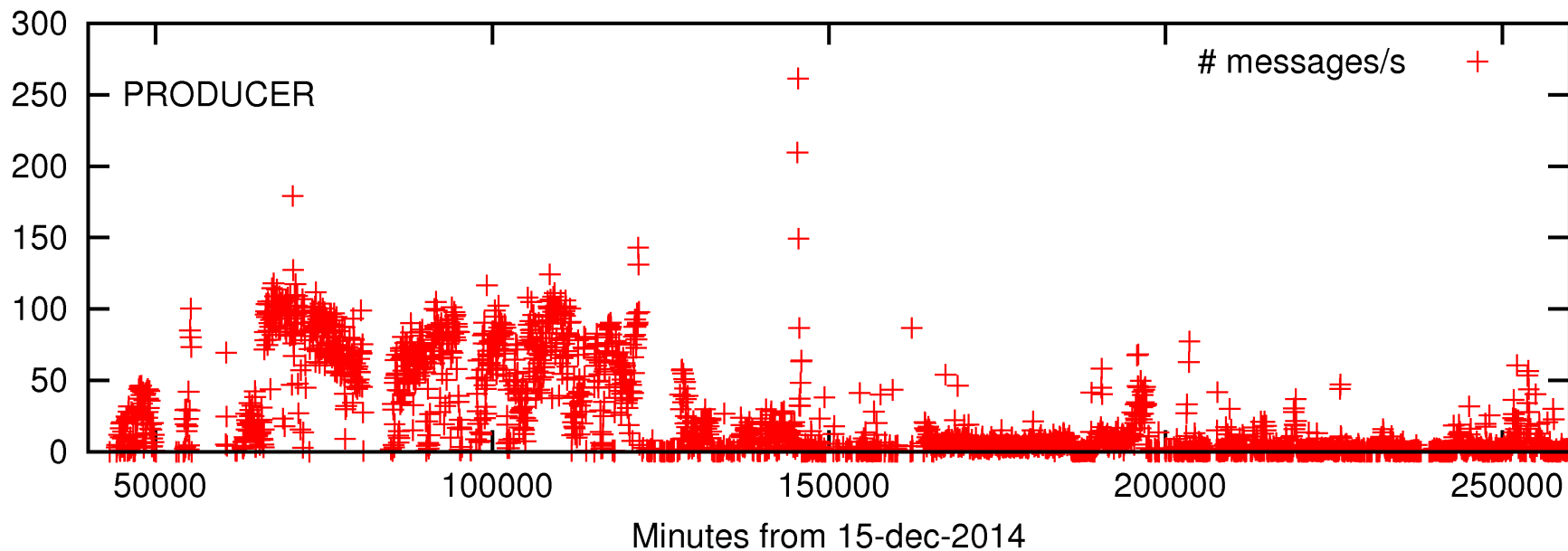
15 mar

Problems with aiatlas017

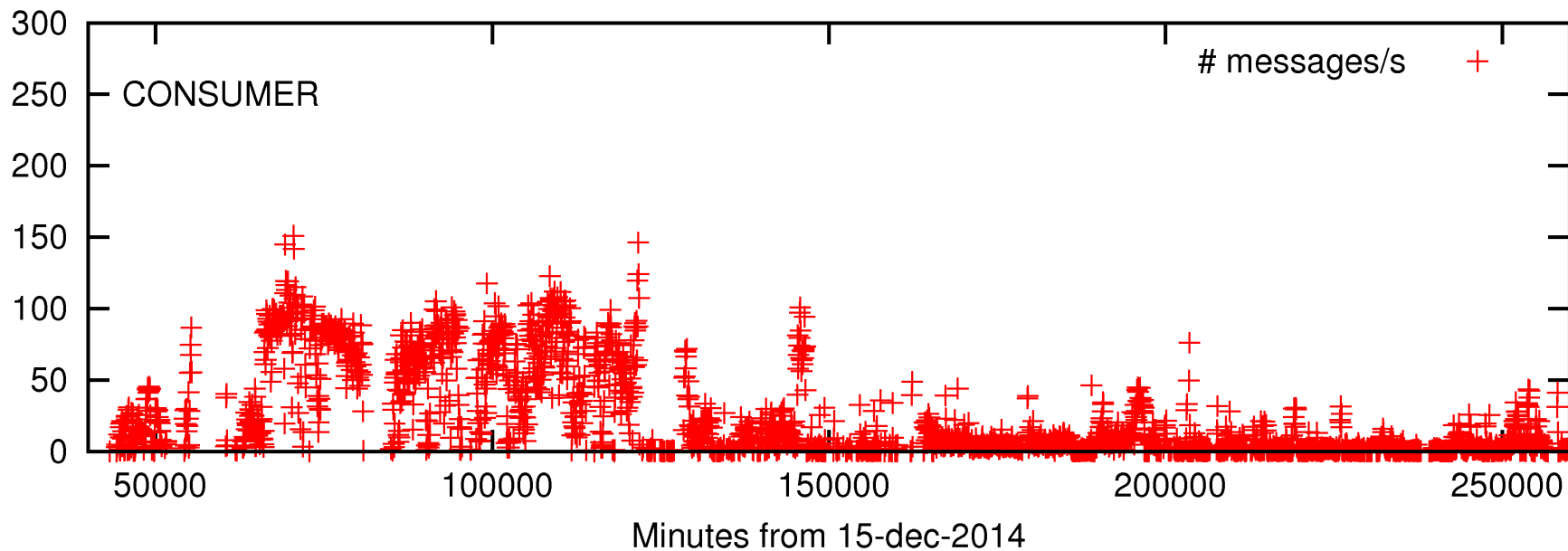
28 mar

High rate from producers

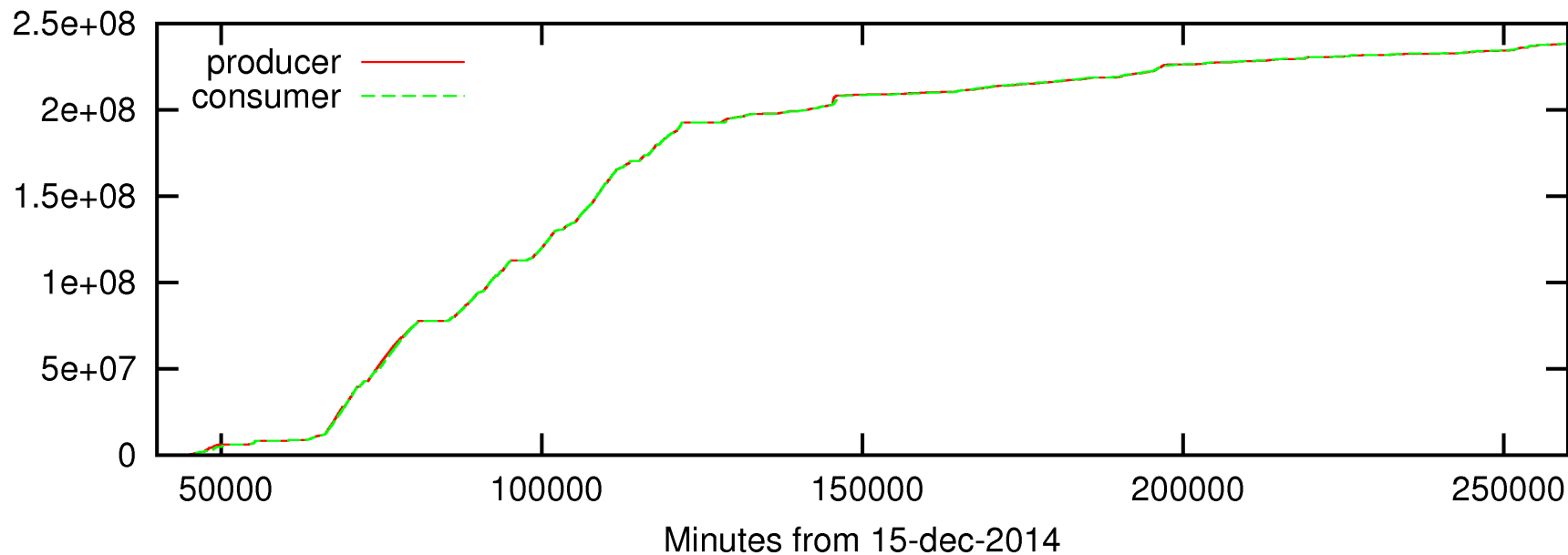
Bandwidth



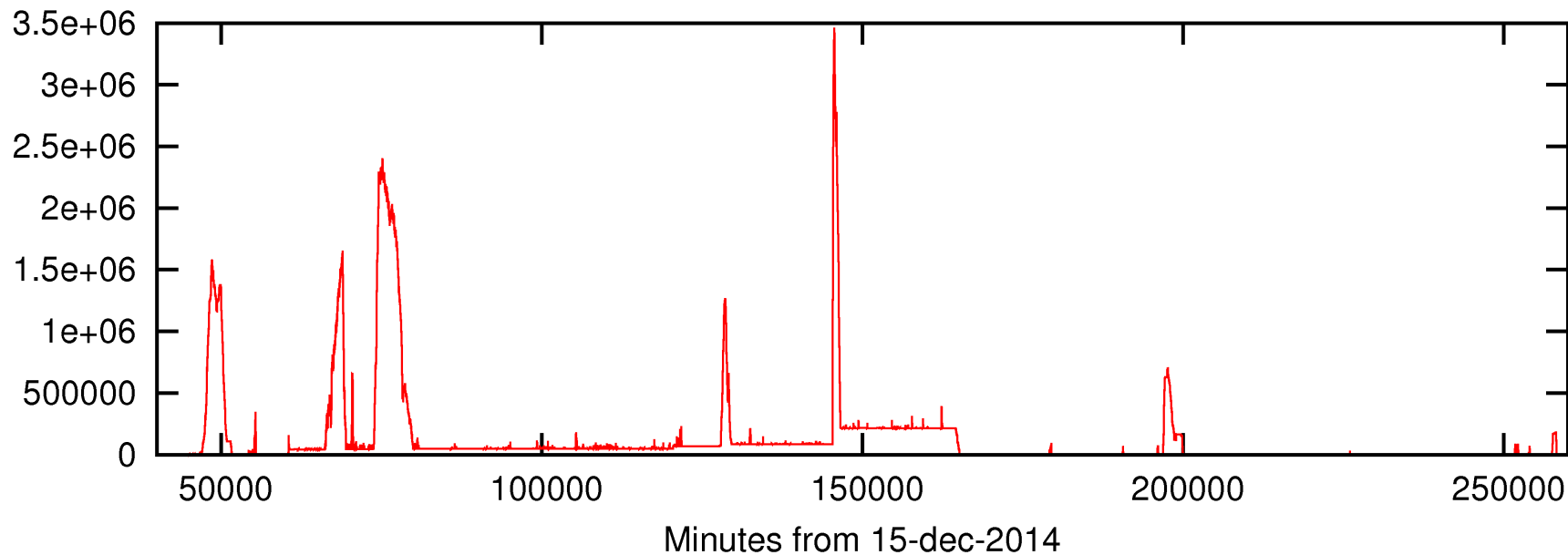
Bandwidth



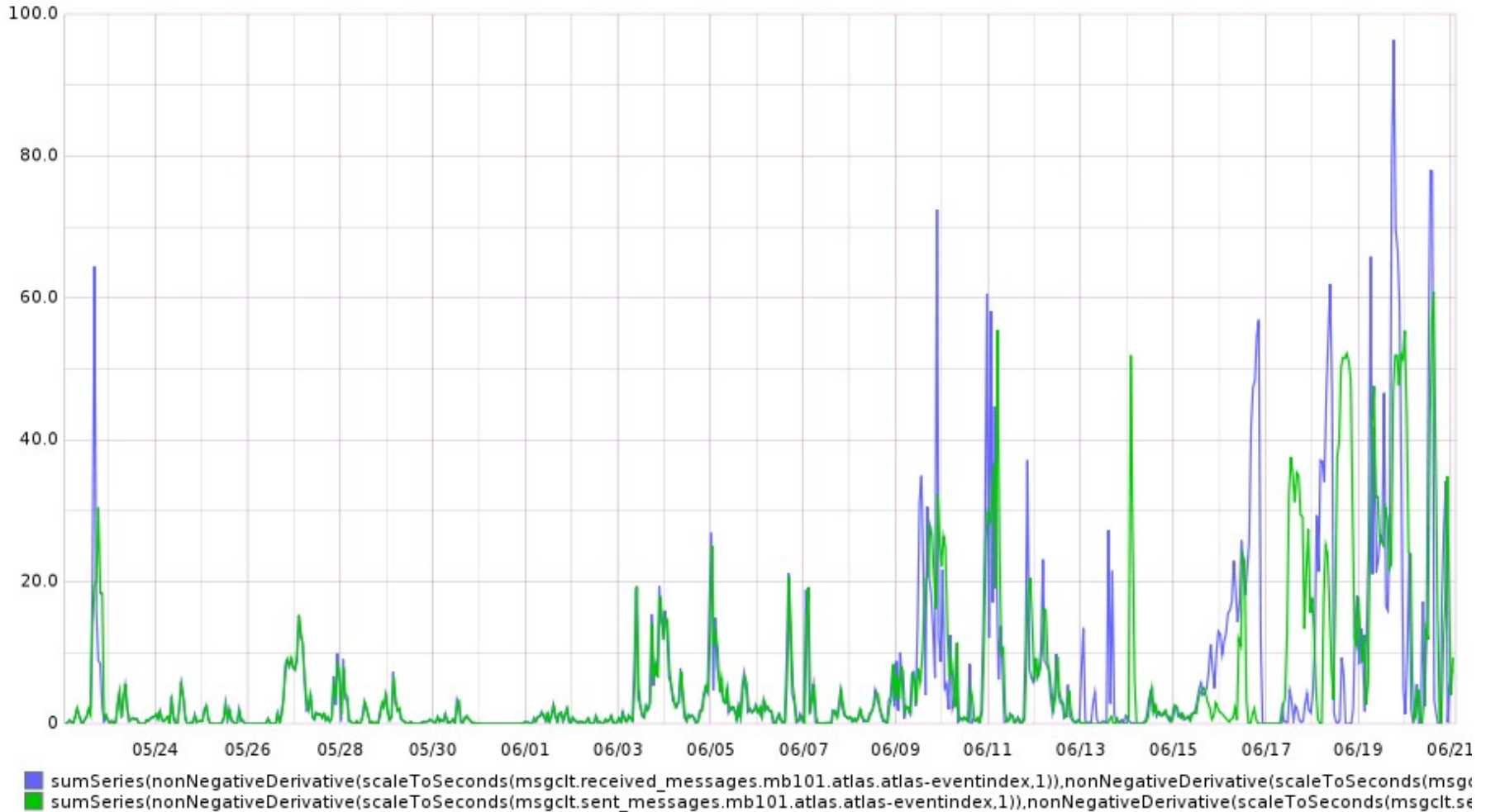
Total messages



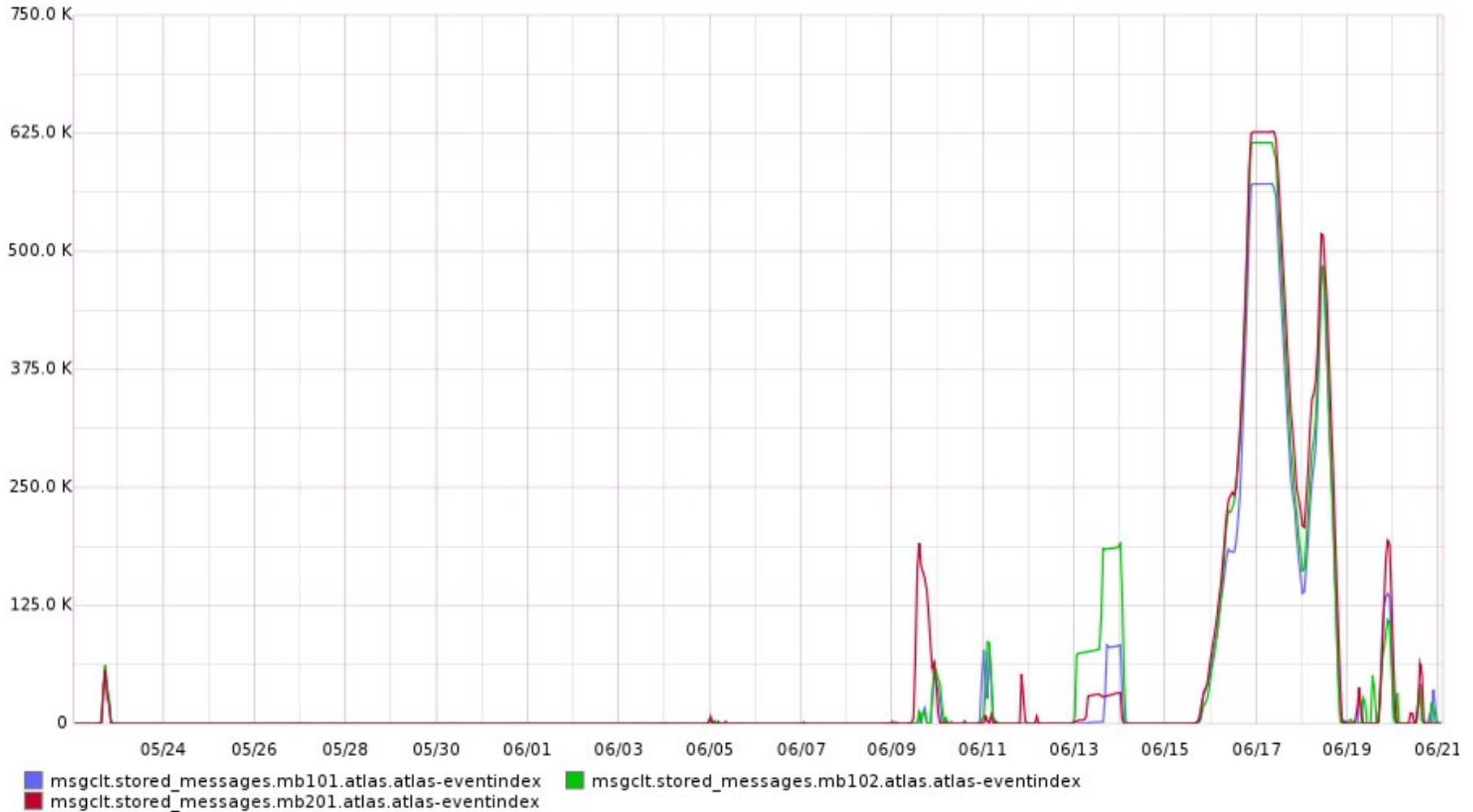
Queued messages



Rate last month



Unconsumed messages@ brokers



Monitoring

- Remember we produce statistic messages:
- Producer
 - Guid, ProducerId, StartTime, EndTime, #Events, #Messages, #Bytes
- Consumer:
 - every processed GUID:
 - Guid, ConsumerId, StartTime, EndTime, #Events, #Messages, #Bytes,
 - every 60 seconds, summing up processed data:
 - ConsumerId, StartTime, EndTime, #Events, #Messages, #Bytes

Monitoring

- Could be used in the “monitoring service”:
 - Trace data (by GUID), get traverse time from production to storage in HDFS, ...
- If needed, we could produce other Messages:
 - (ie:)Every validated Dataset: final time when data is validated

Declare missing or invalid data

- Failures happens. Rate is small, but some times data might not be received correctly, ie. past incidents:
 - Data: Negative EventNumbers due to initial out of range
 - Consumer: Hdfs/HBase failures, out of order messages in the past
 - Brokers: Failure/Restart of the broker missing stored messages.
- We try to recover right data from received one whenever possible.
- If not possible, we re-send manually new (grid) jobs to process data again.
- But we need an automatic way to declare missing or invalid data (detected after Validation).

Consumer: HBASE

- One table containing ALL events
- Row key: binary composite key:

guid **runNumber** **evtNumber**

- Count events doing scans over row key:

guid **00000000** **00000000** - **guid** **ffffff** **ffffff**

Consumer: HBASE

- One family: 'tk', contains token components (columns):

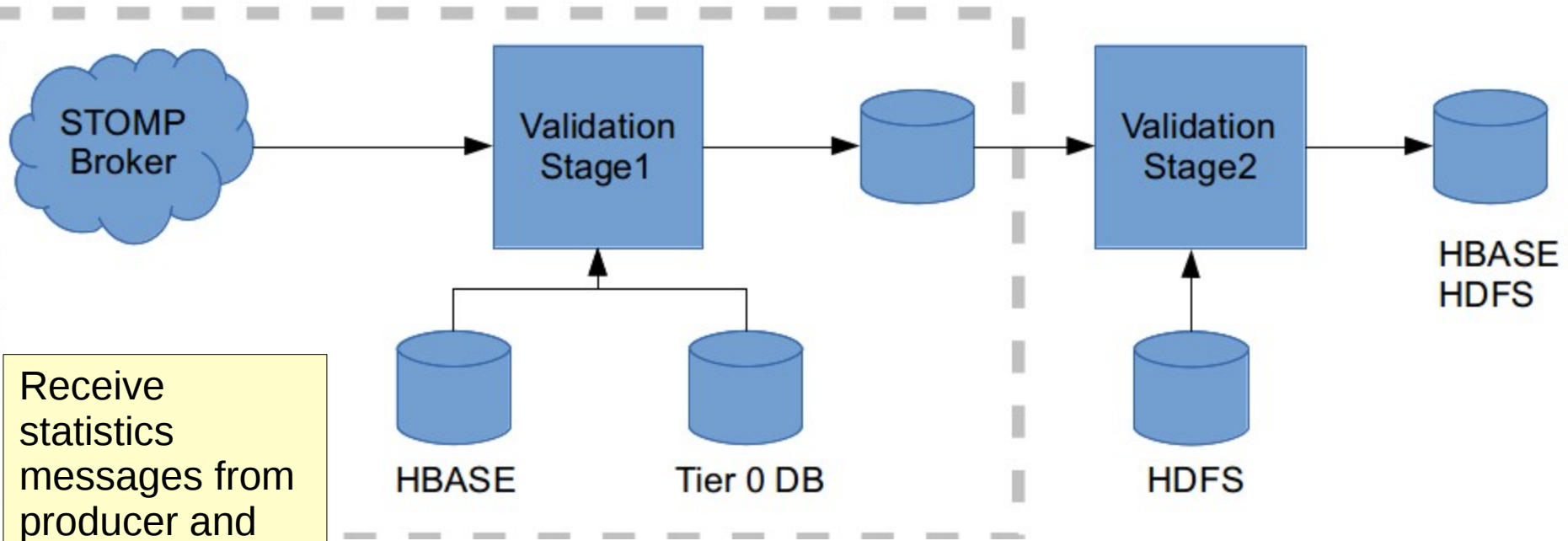
ct cl t o1 o2 pv

- Token:

[DB= guid][CNT= ct][CLID= cl]
[TECH= t][OID= o1 - o2]

- **Added new column:**
 - Key to provenance entry pv

Validation



Receive statistics messages from producer and consumer. Get GUIDs produced and consumed and number of events.

Get number of events per GUID

Get tasks (datasets) and number of jobs (files) from Tier 0 farm

Check files present on HADOOP

Signal Core to import data and make it available.