

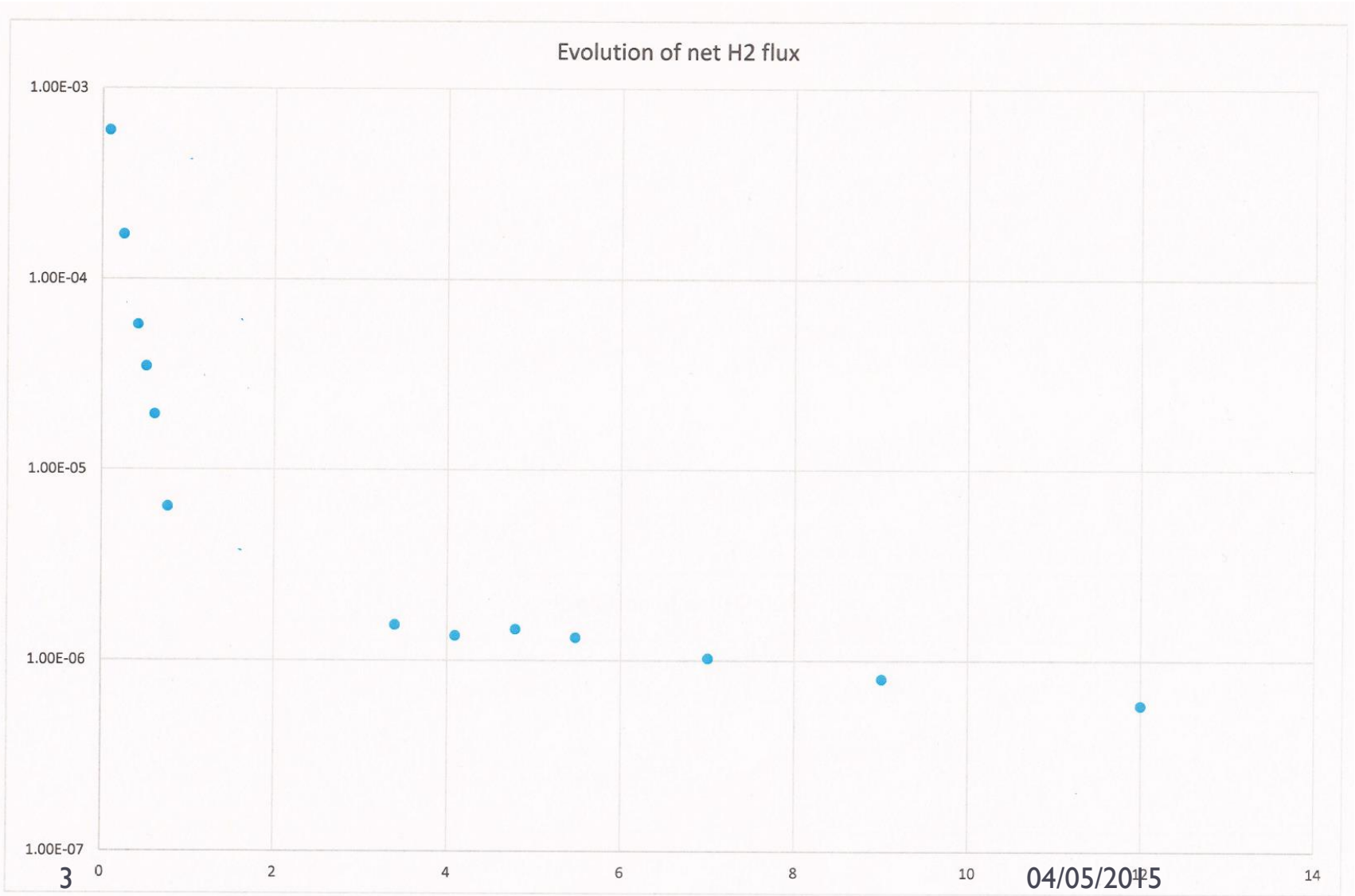
Status of fabrication

Anastasiya Solodko

Fixed Gap System (existing)

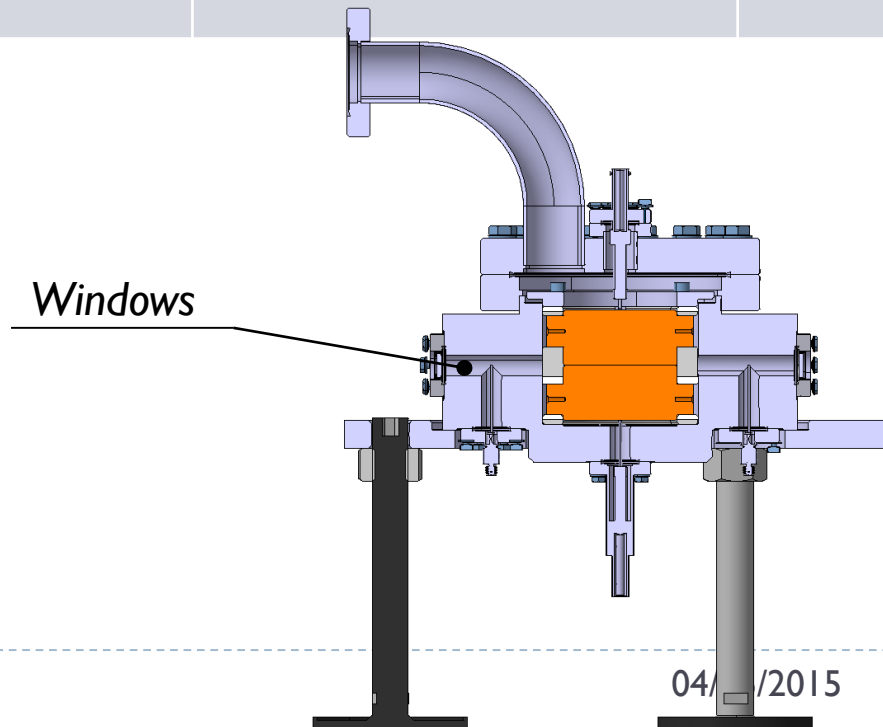
N	Requirements	Status	Responsible
1	New spacers (t=0.5 mm) CLIASTND0137, 10 pieces to be ordered from Andalo Gianni	https://edh.cern.ch/Document/SupplyChain/DAI/6005300 <i>DAI – rejected by Michael John BARNES</i>	Hugo Alistair Day
2	New LE, CLIASTND0077, 20 pieces	<i>In progress: Said was contacted, TS prepared, launch price inquiry</i>	Anastasiya Solodko, Lukas Pazdera
3	Additive manufacturing of the LE	Drawings are in progress, gap is not guaranteed	Anastasiya Solodko
4	Increase the holes in the next dielectric spacer from 10 to 17 mm	To be confirmed	

Baking results (9 electrodes + 8 small samples)



Fixed Gap System (new)

N	Requirements	Status	Responsible
1	Increase the windows 30-40 mm windows (diameter) and 40 mm holes in the spacer		
2	Smaller electrodes		
3	Bigger chamber		

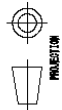


Fixed Gap System (handling)

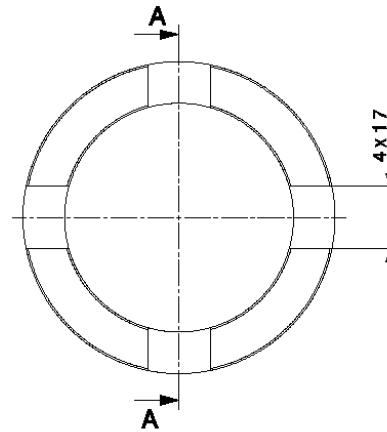
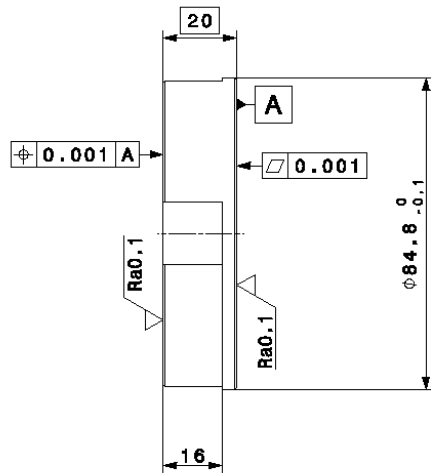
N	Requirements	Status	Responsible
1	Transport/storage box to be designed for LE		Anastasiya, Serge
2	Handling instruction to be created		Anders

EXTRA (new dielectric spacer)

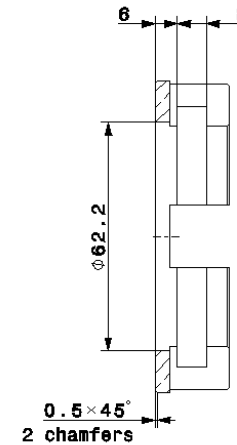
DESIGN, EXECUTE, THE DIMENSIONS
DRAWINGS, INDICATE TO STANDARDS
DRAWINGS, INDICATE TO STANDARDS
DRAWINGS, INDICATE TO STANDARDS



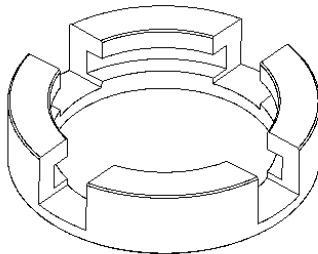
UNRENDERED DIMENSIONS MUST
BE INDICATED IN THE DRAWING
UNLESS OTHERWISE SPECIFIED
UNLESS OTHERWISE SPECIFIED
UNLESS OTHERWISE SPECIFIED



Front view
Scale: 1:1



Section view A-A
Scale: 1:1



Isometric view
Scale: 1:1

1. Packaging should be marked with the number from column 1 of the table.
2. See the drawing CLIASTND0xxx for assembly and control.

1		1	Al203		
QUA	DESCRIPTION	POS	MAT.	OBSERVATIONS	REF. CERN
ENS/ASS		S. ENS/S. ASS			
ISO 2768-MK-E	RF measurement stand equipment	✓	Ra 3.2	ISO 13745	-0.2
FIXED GAP SYSTEM			SCALE		
INTERELECTRODE DIELECTRIC SPACER			1:1		
VERSION 2			DRAWN A. SOLODKO 2015-03-11		
NON VALABLE POUR EXECUTION			RELEASED		
NOT VALID FOR EXECUTION			APPROVED		
			CAD Document Number: ST0666037_02		
			REPLACES		
			CLIASND0138		SIZE IND.
			3		

