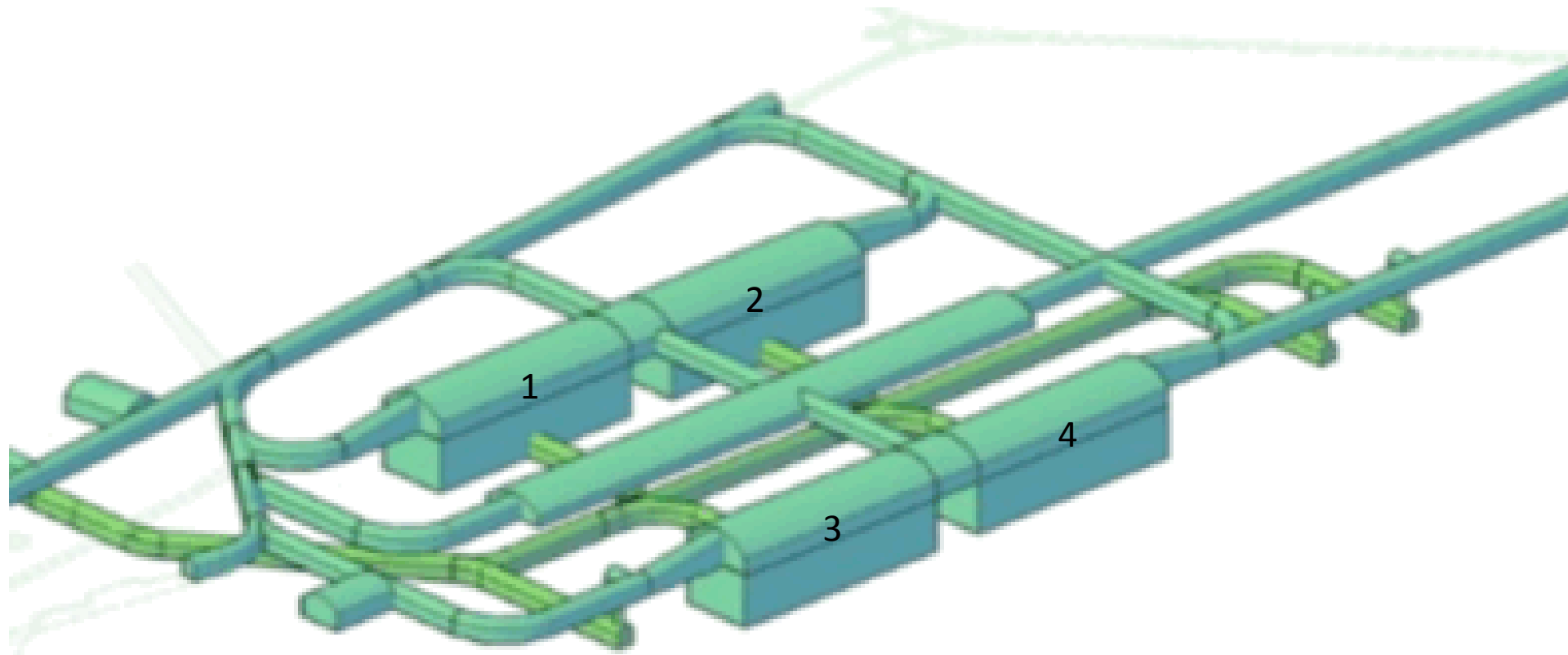
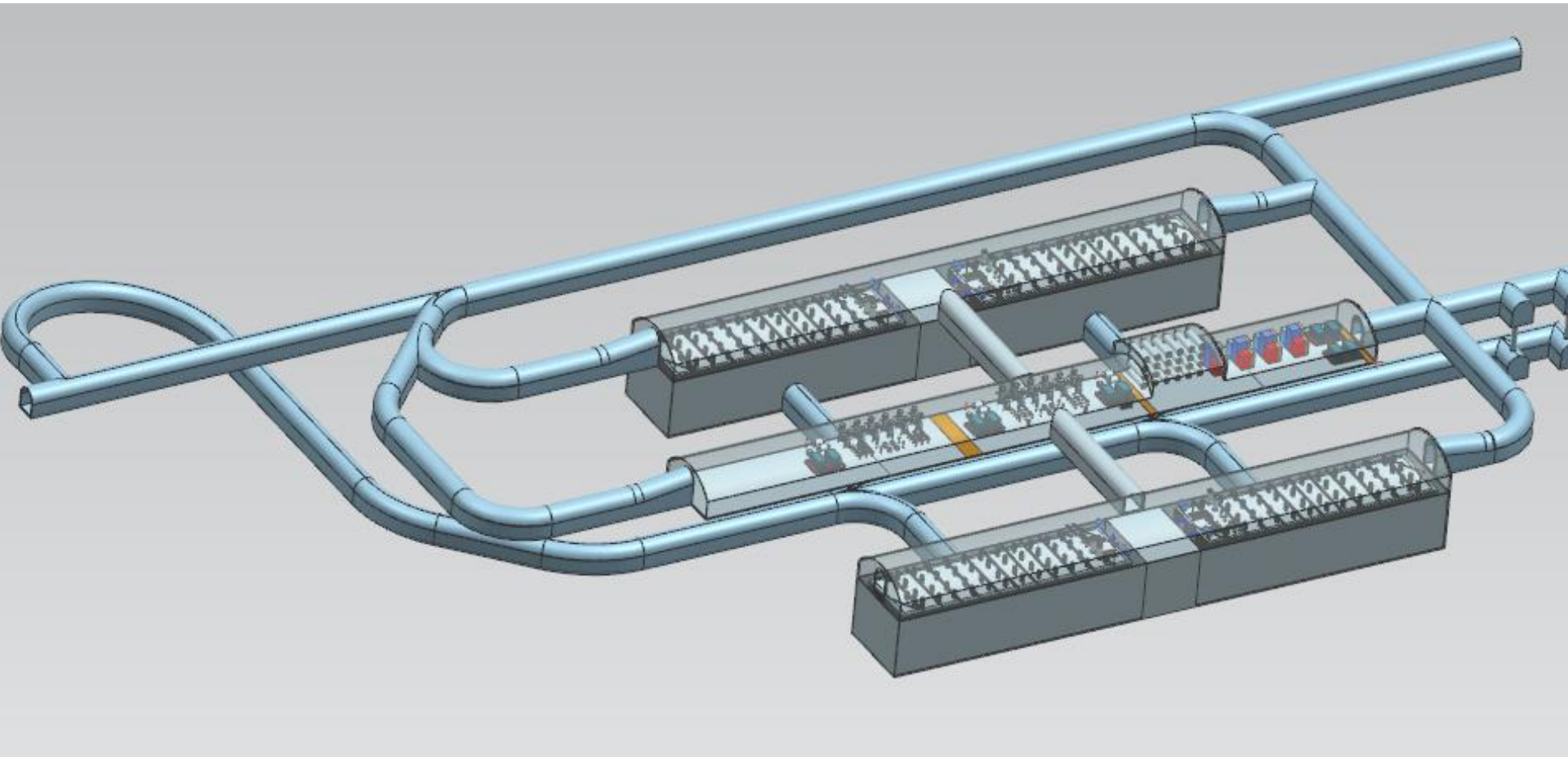


# New strategy

27-5-2015

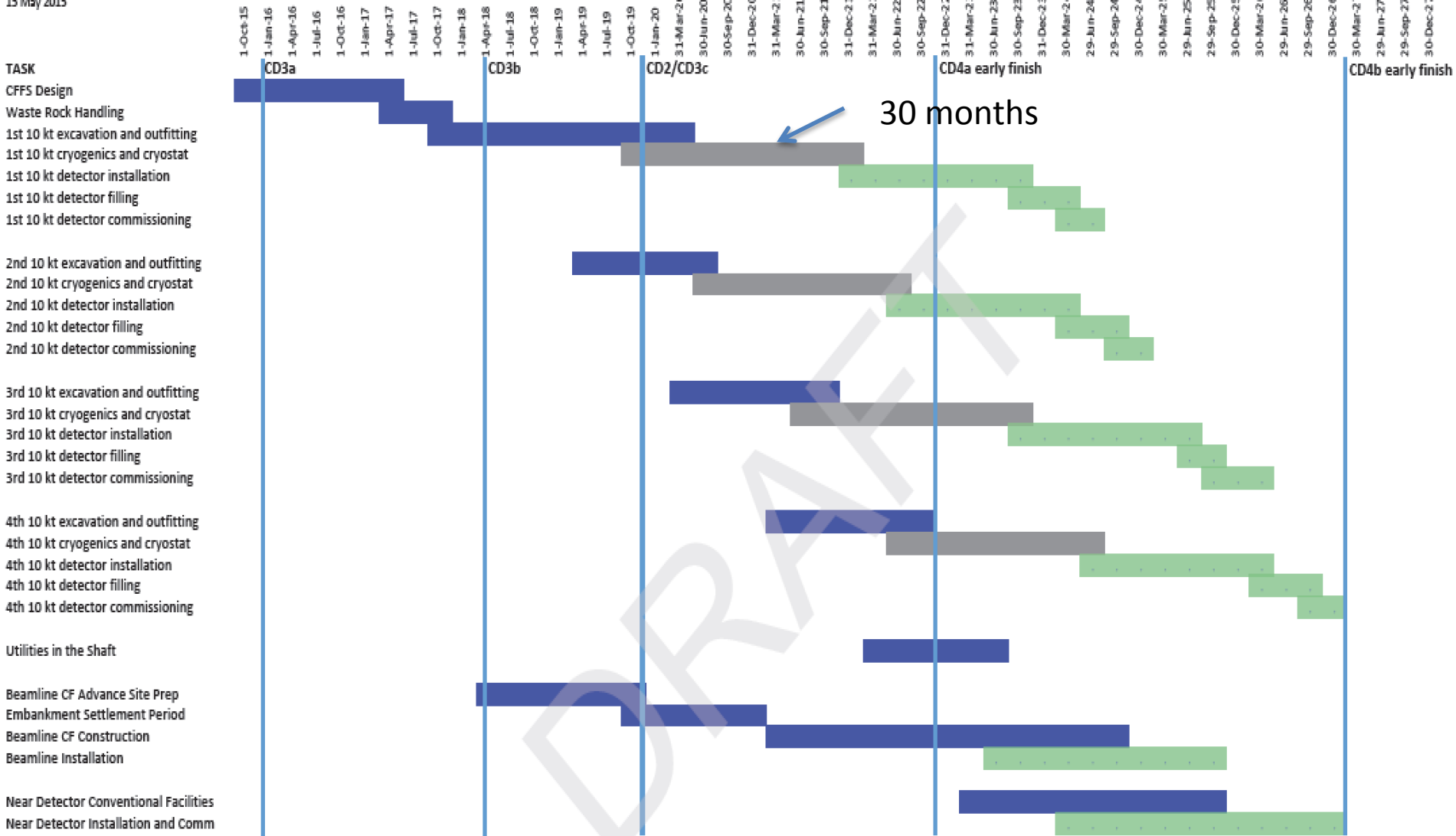
4 identical and independent caverns !





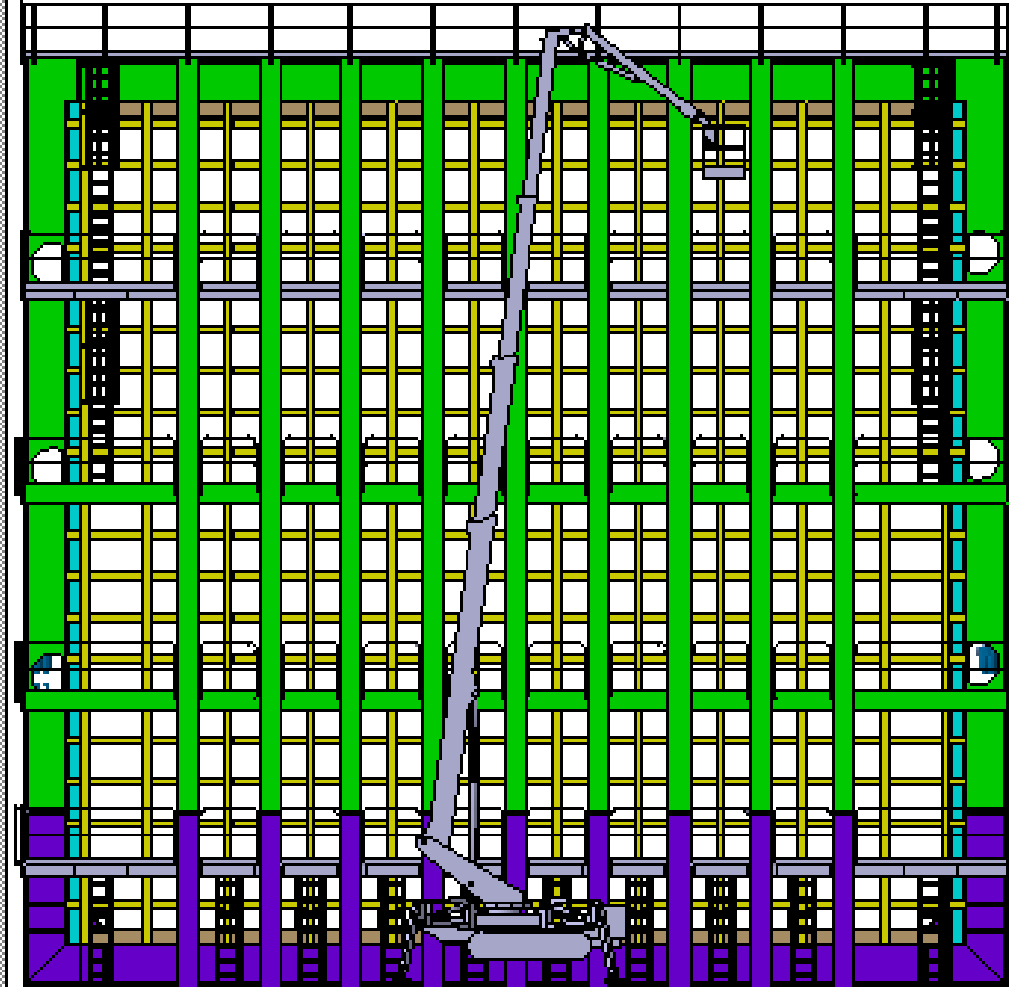
# Latest LBNF/Dune schedule

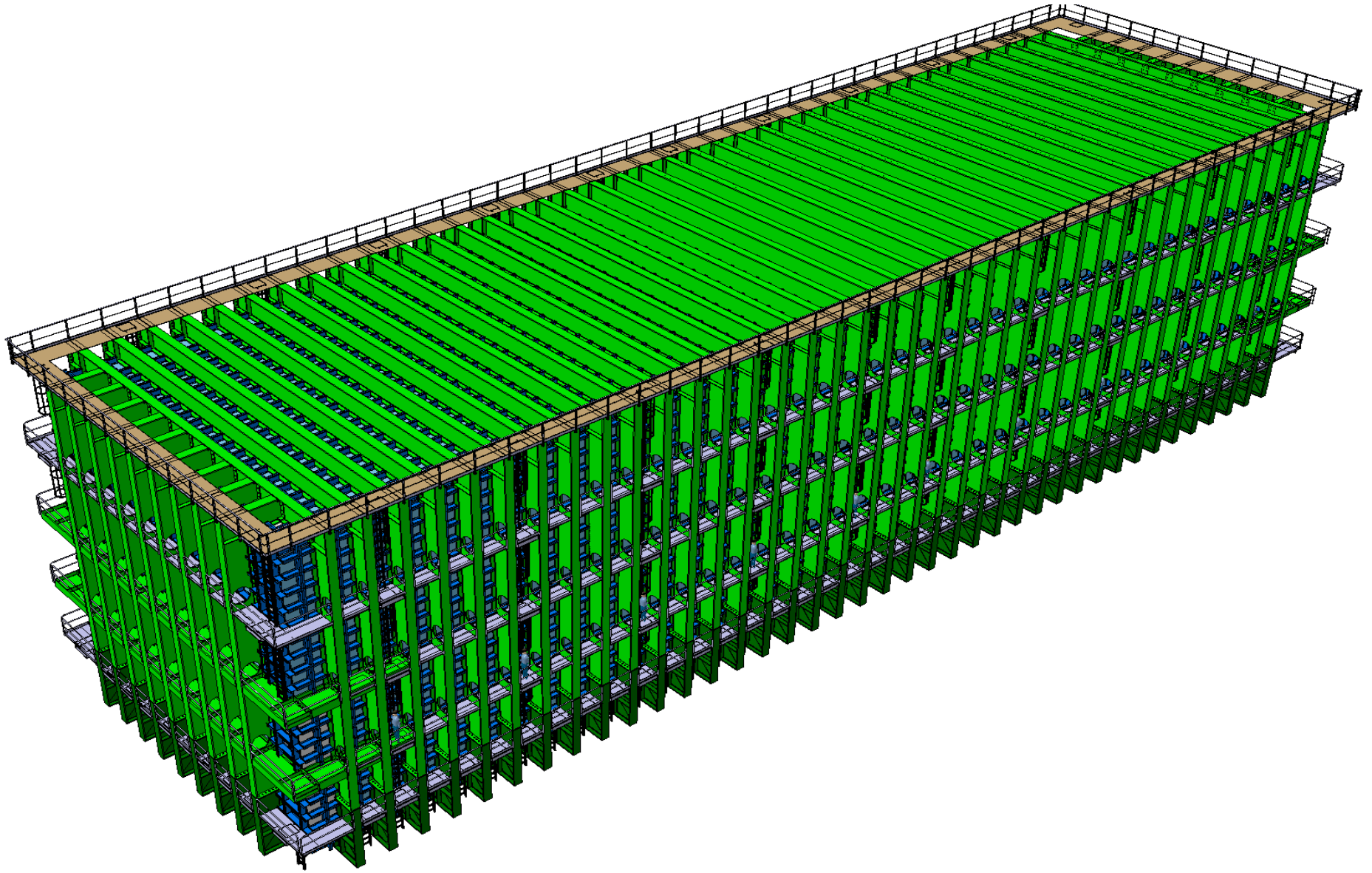
LBNF-DUNE SUMMARY SCHEDULE-draft  
 AGGRESSIVE FUNDING PROFILE  
 15 May 2015

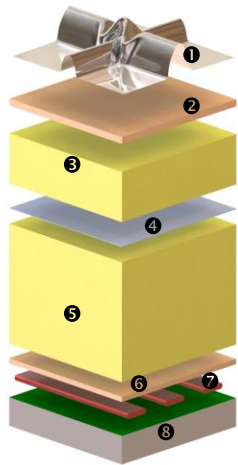
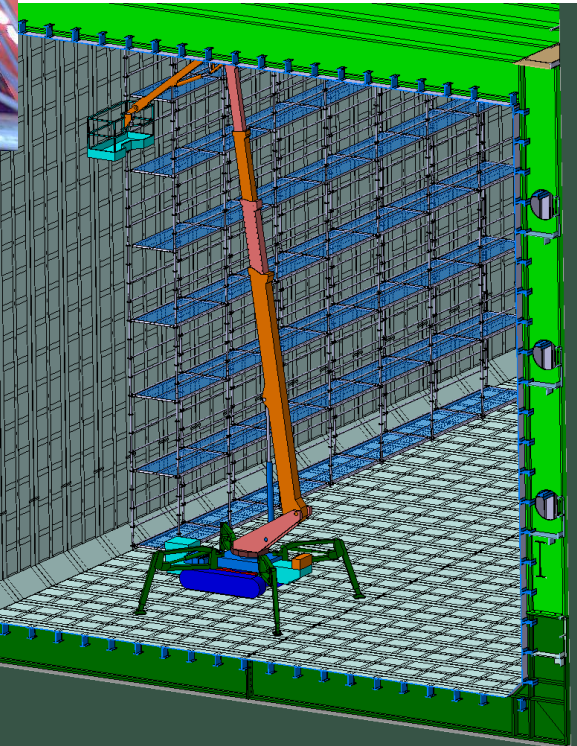
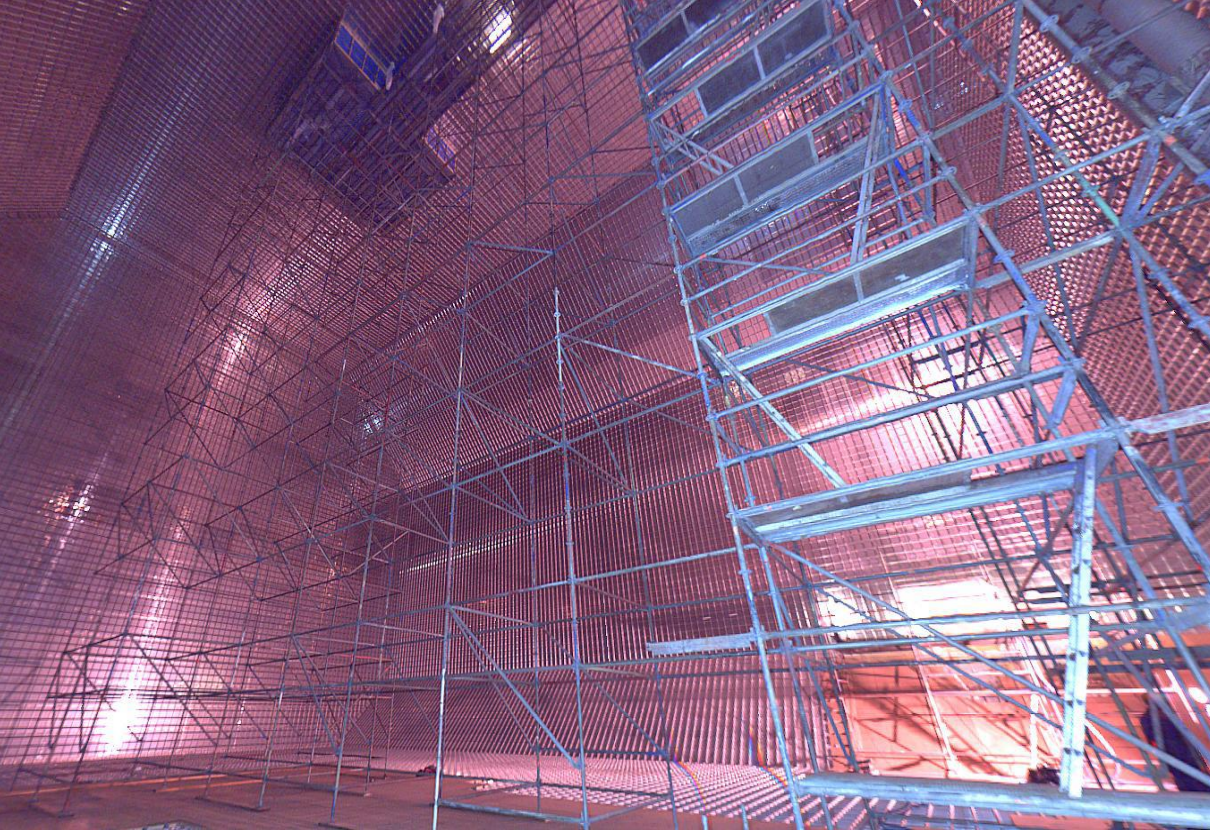


\* cavern roof not to scale

Cryostat in its own cavern \*  
during assembly







- 1 Stainless steel primary membrane
- 2 Plywood board
- 3 Reinforced polyurethane foam
- 4 Secondary barrier
- 5 Reinforced polyurethane foam
- 6 Plywood board
- 7 Bearing mastic
- 8 Steel structure with moisture barrier

# Why ?

The reasons behind this choice are multiple:

- *the need to avoid any possible issue related to the geology of the underground side*
- *the possibility to monitor from outside any possible problem or failure in the membrane concept*
- *the fact that such a cryostat comes with a roof which will host most services*
- *the possibility to gain time in the construction of the support structure*
- *the possibility to involve other groups/funding agencies to participate in-kind to the delivery of the ready cryostats*