

# EMCAL QA LHC15e pass1

M. Germain, L. Ronflette A. Shabetai



ALICE

QA quiet beam pp@13TeV



LHC15e: 21 runs

223338, 223337, 223336, 223330, 223329, 223328, 223327, 223325, 223323, 223321,  
223311, 223304, 223298, 223280, 223279, 223278, 223277, 223276, 223275, 223273,  
223270

11 runs with EMCAL

1 no QA yet available

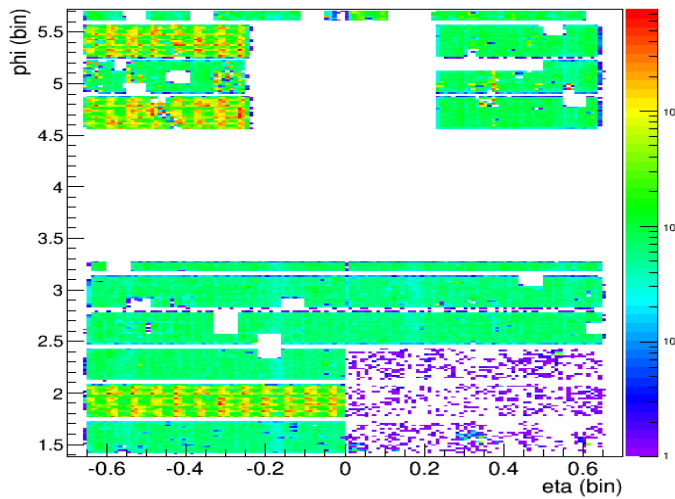
Plot on <http://aliqaemc.web.cern.ch/data/2015/LHC15e>



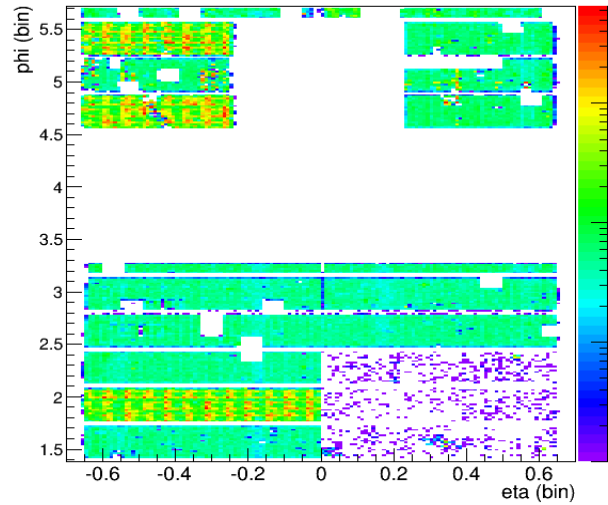
## Occupancy

3 EMCAL SM only few clusters, similar for each run

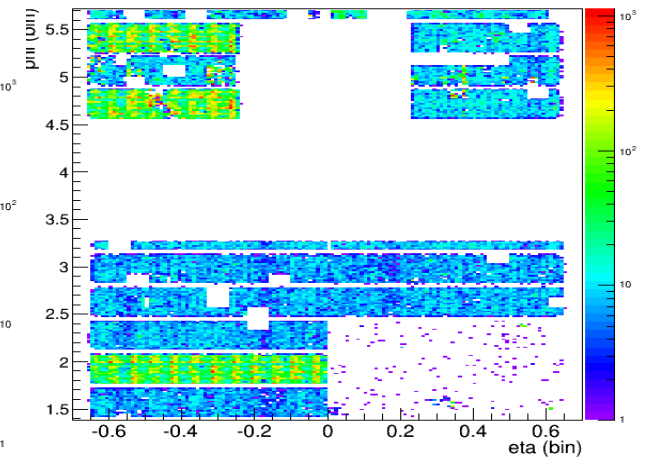
Occupancy Run 223311 MB



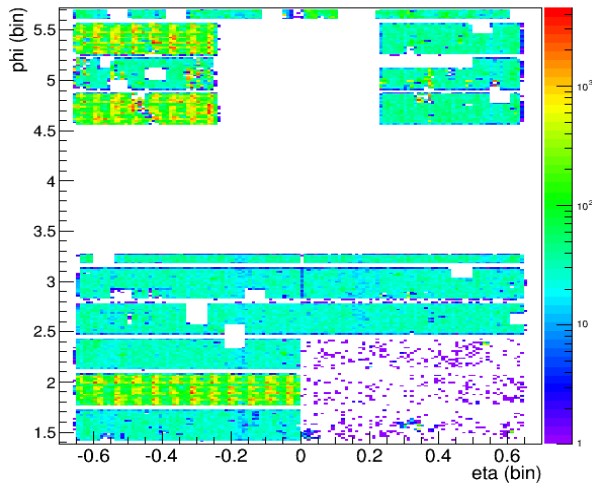
Occupancy Run 223336 MB



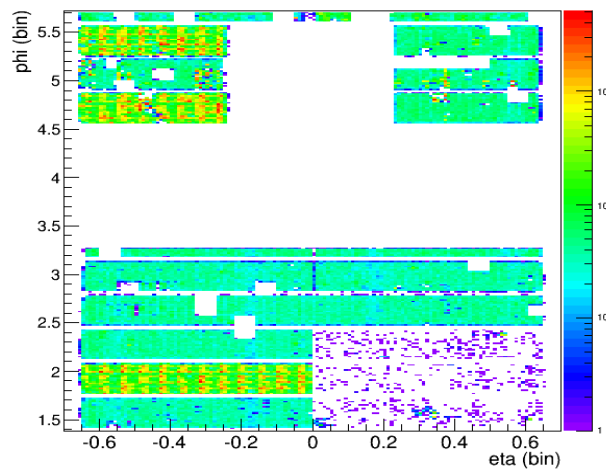
Occupancy Run 223338 MB



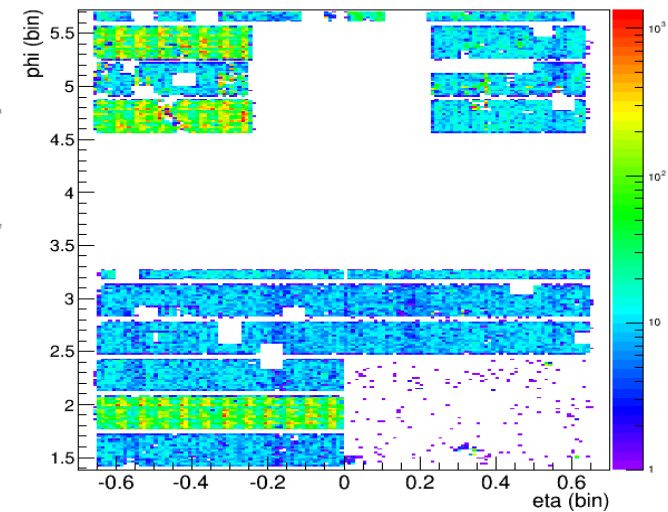
Occupancy Run 223329 MB



Occupancy Run 223330 MB



Occupancy Run 223328 MB



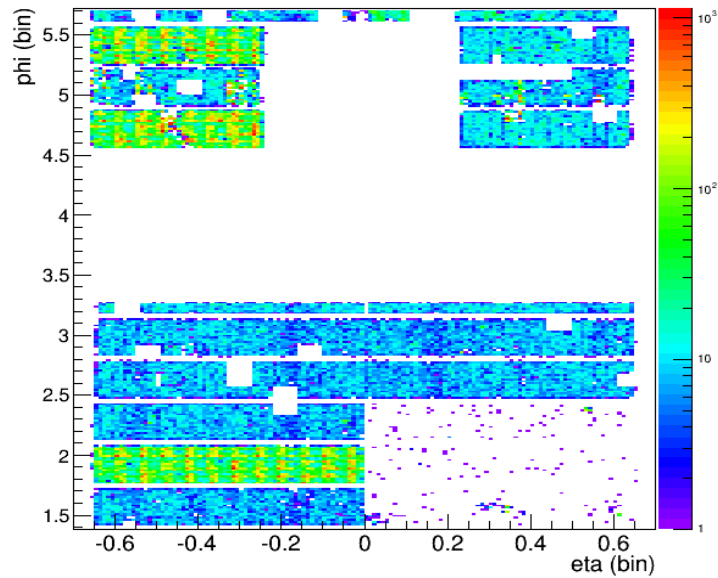


ALICE

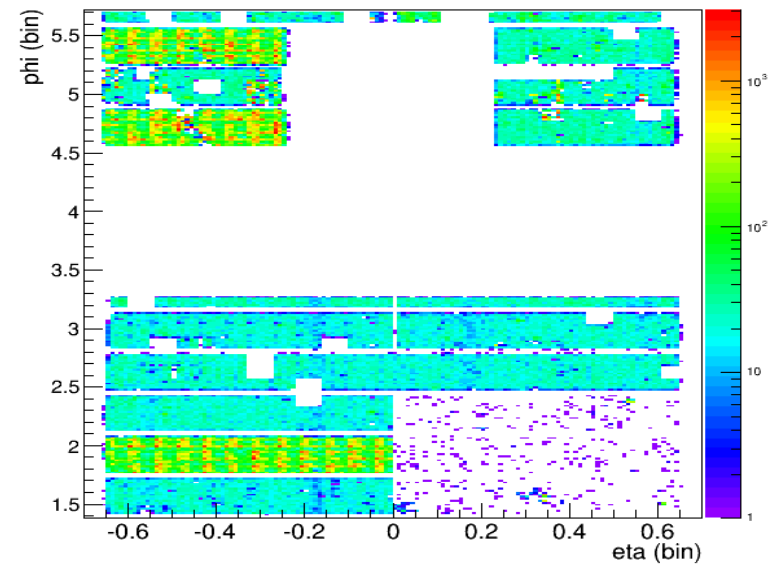
# LHC15e pass1 run by run occupancy



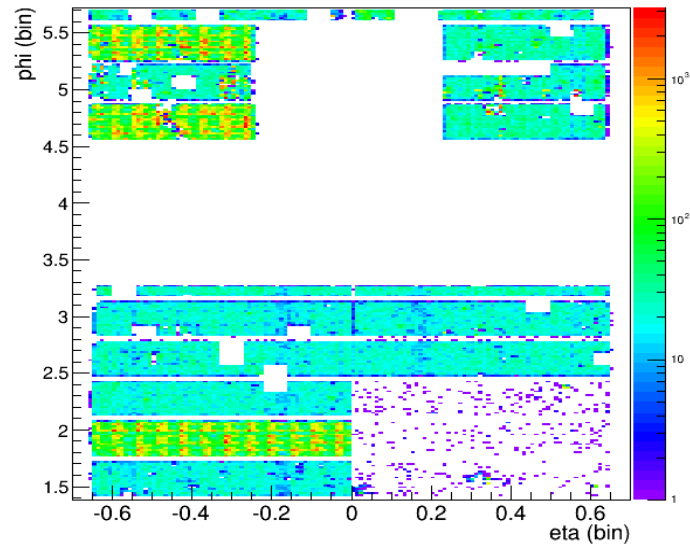
Occupancy Run 223321 MB



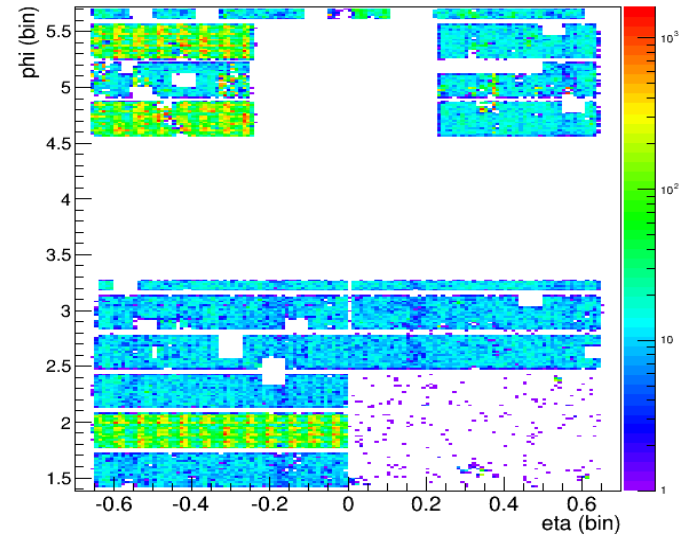
Occupancy Run 223323 MB



Occupancy Run 223327 MB



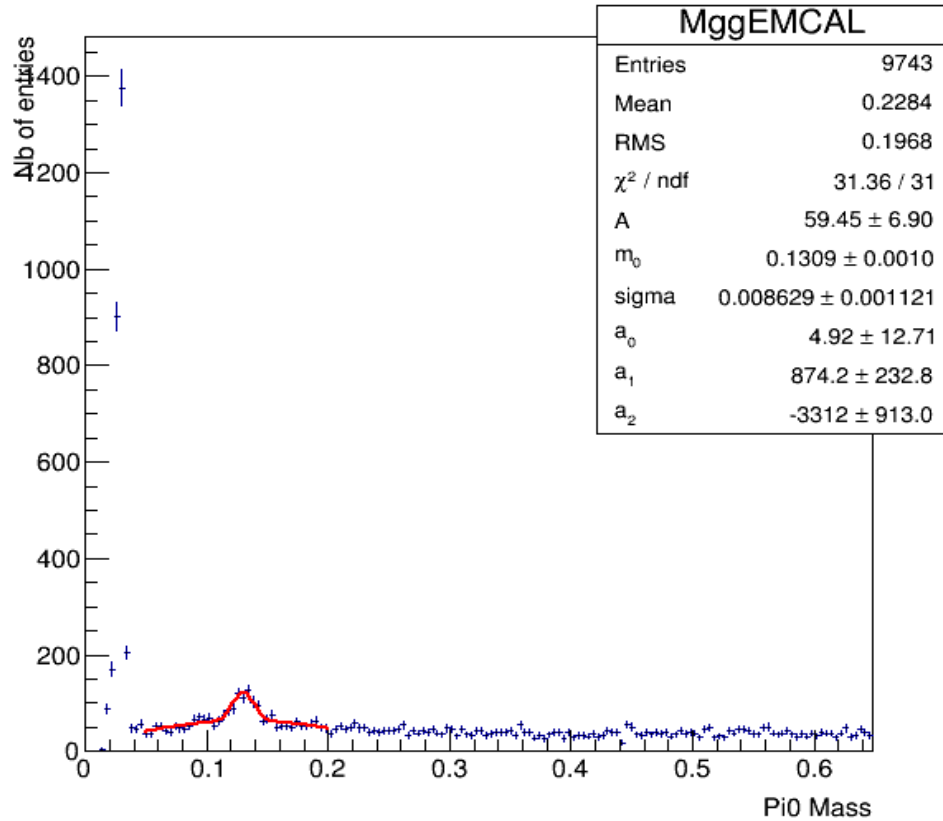
Occupancy Run 223325 MB



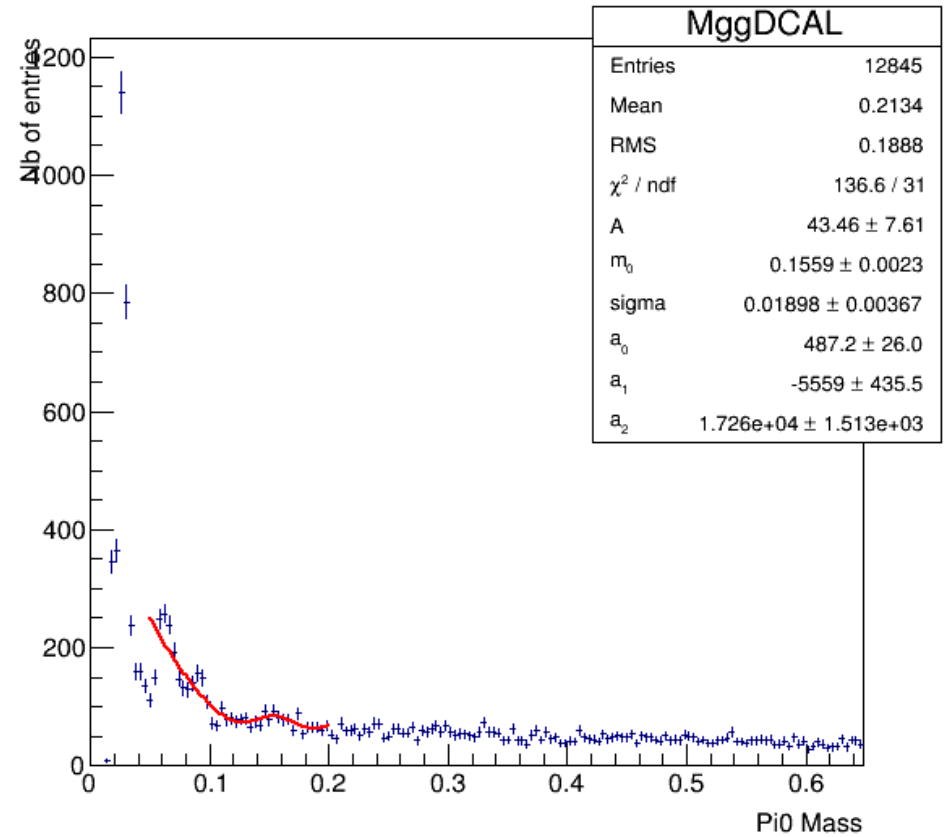


## Invariant mass in single runs peak

### Pi0 Mass in EMCAL



### Pi0 Mass in DCAL



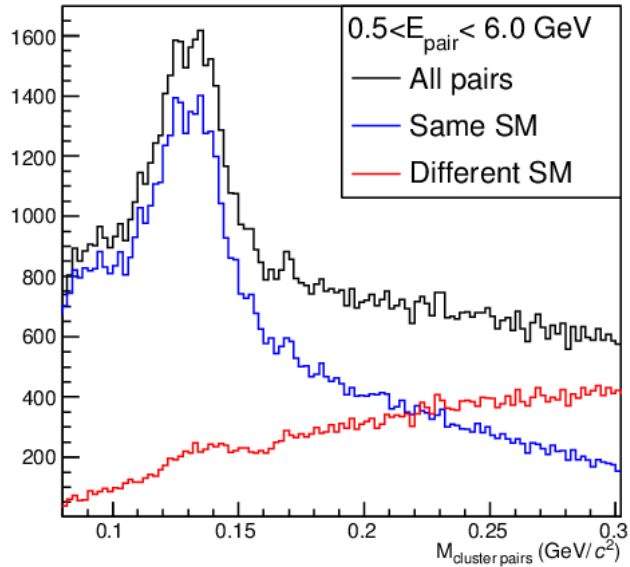


IIT

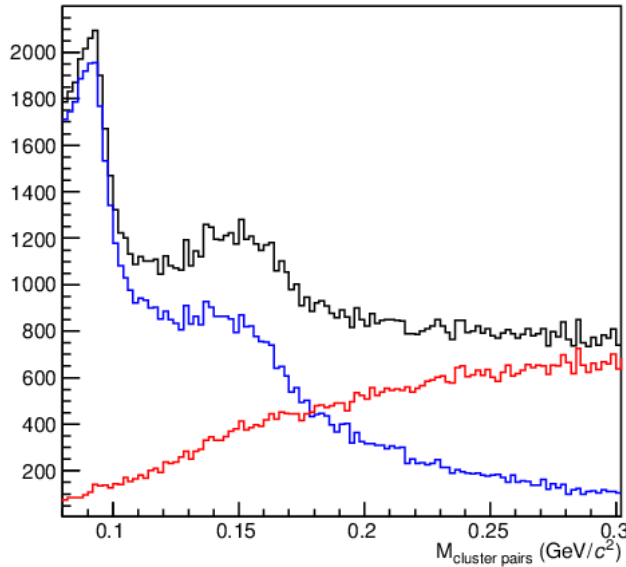
# LHC15e pass1: $\pi^0$



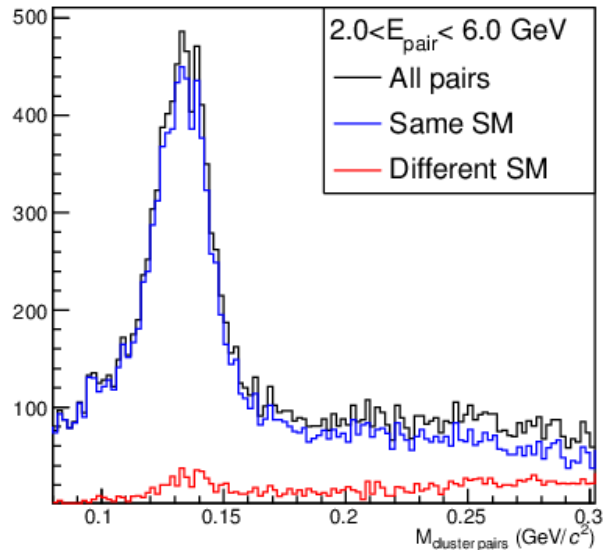
EMCAL



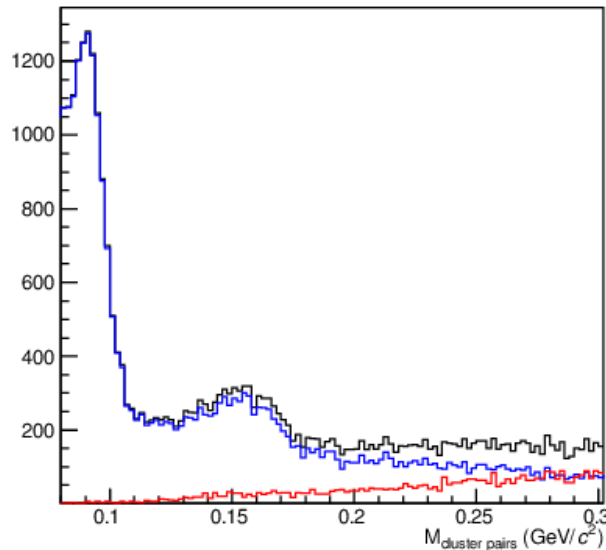
DCAL



EMCAL



DCAL



Nice peak in EMCAL  
And in DCAL  
but shifted (not calibrated)



ALICE

# Conclusions



Summary: 10 runs checked:

DCAL/EMCAL checked:

SM in EMCAL A side with less occupancy: investigation ongoing with experts

$\pi^0$  peak present in both EMCAL/DCAL .



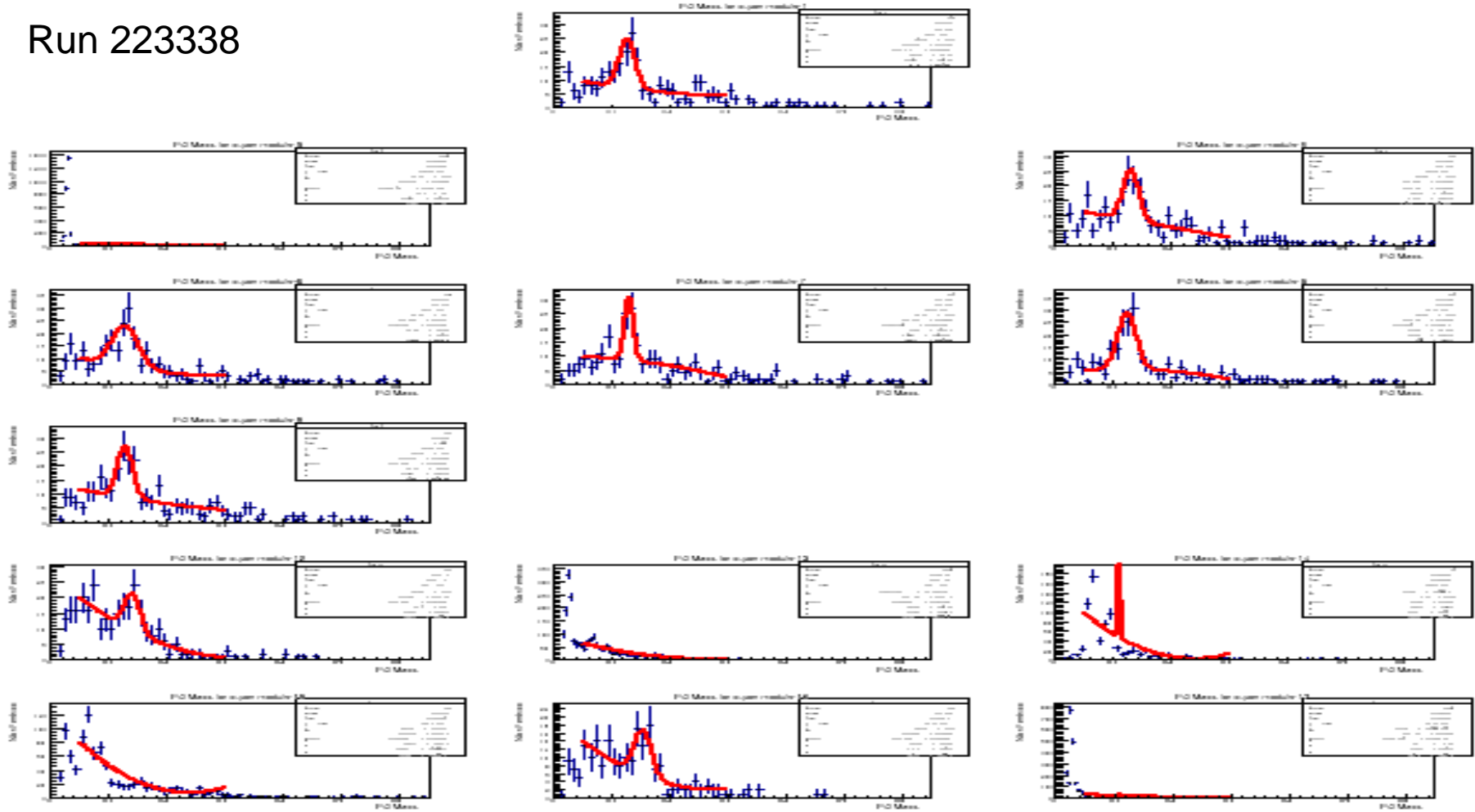
ALICE

# LHC15e pass1: $\pi^0$



## Invariant mass per SM and single runs

Run 223338

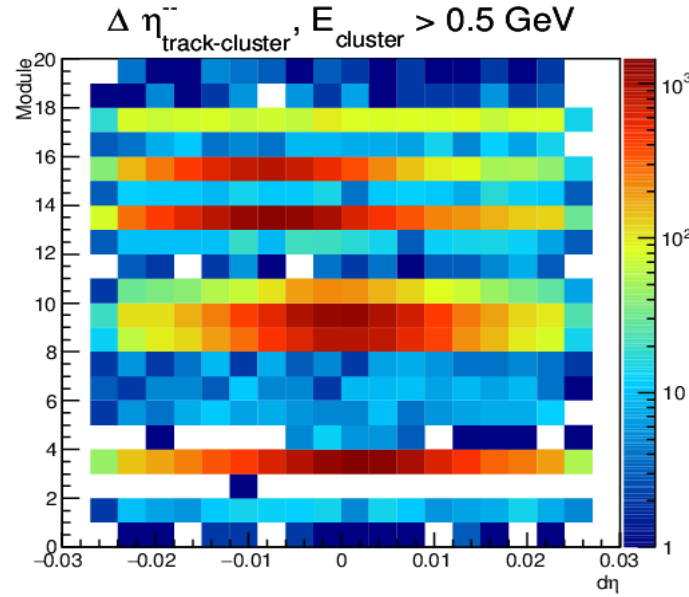
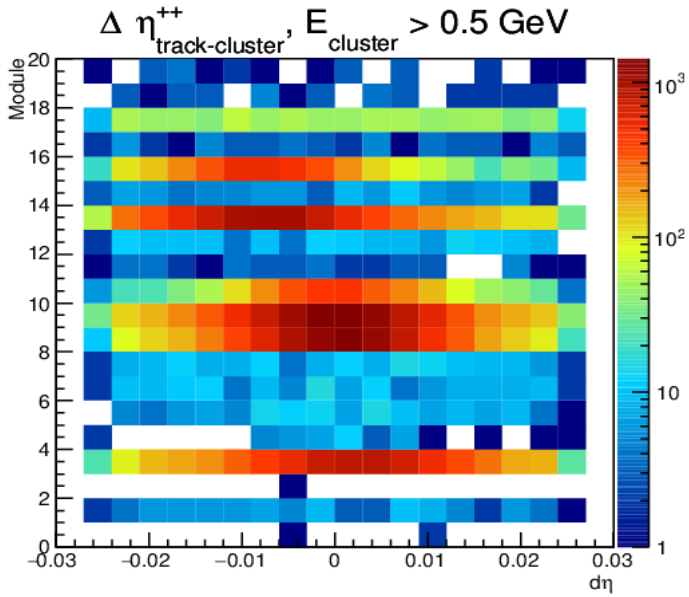
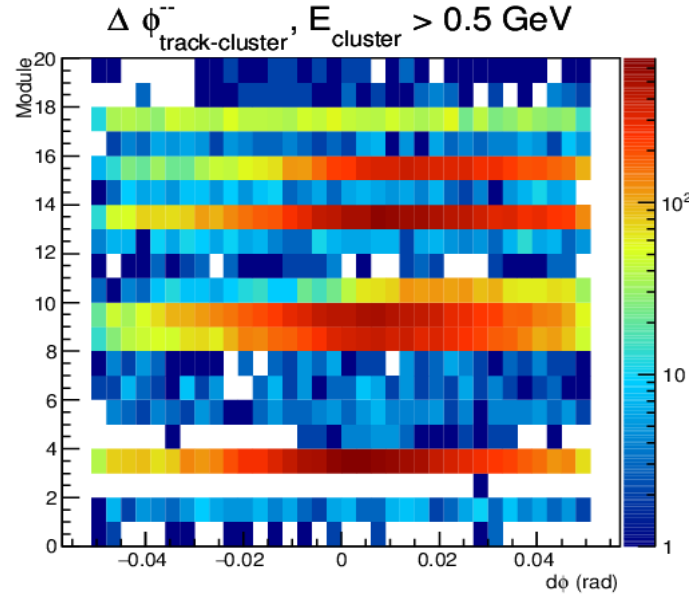
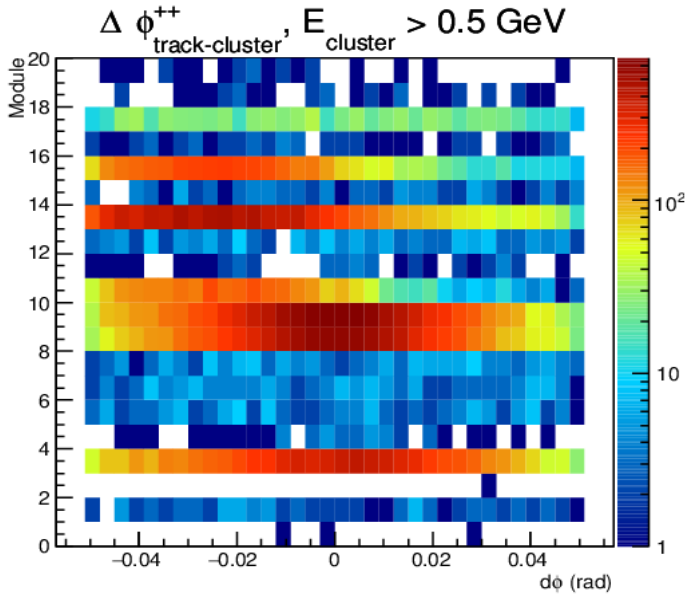






ALICE

# residuals



SM missing and  
ITS only tracks  
And no QA of tracks  
for the moment