

# QuatView

Quattor workshop 2008

Tristan Suerink (Nikhef) [tsuerink@nikhef.nl](mailto:tsuerink@nikhef.nl)

# Motivation

- Knowing the intended state of the farm
- Where is which (virtual) machine?
- All the important information in one table
- Many admins working on quattor
- Outdated wiki

# What is QuatView

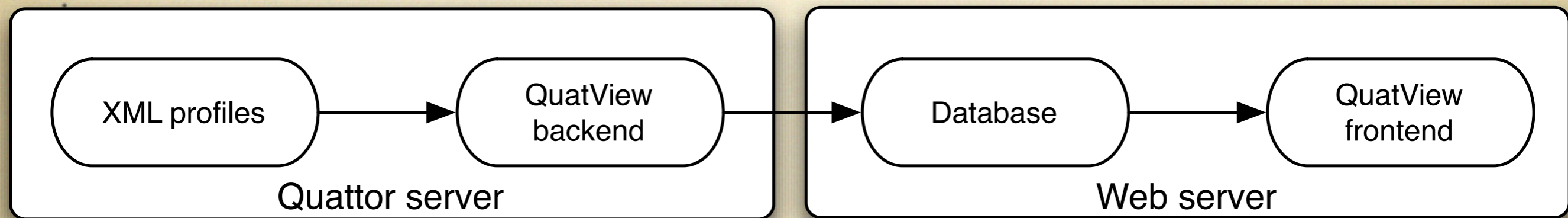
- One table with all needed information
- Web application
- Lightweight
- Easy to configure and adapt

Demo

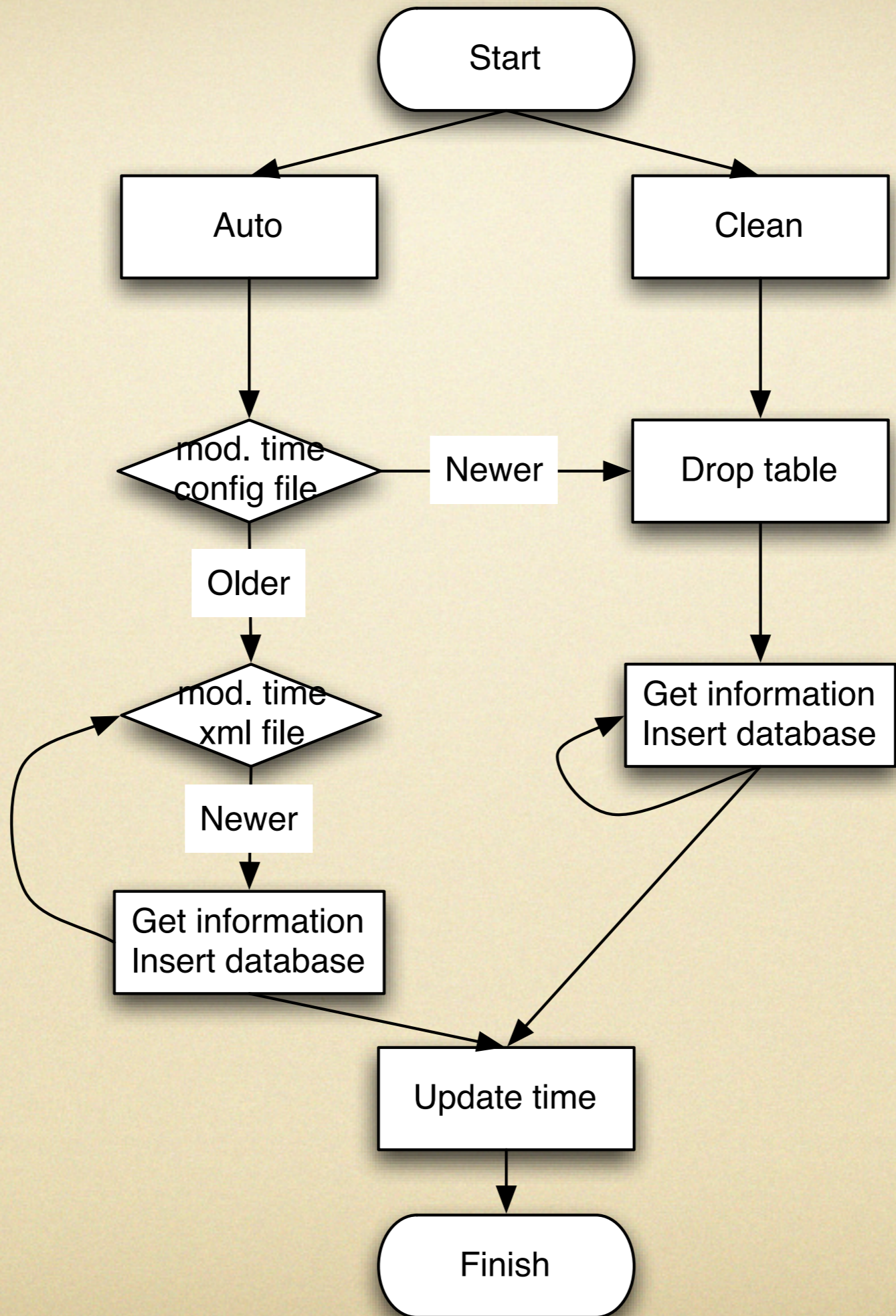
# Requirements

- Use of standard tools
- SCDB Compatible
- Flexible
- One simple config file
- Optimized processing of xml files
- Language independent plugins

# Overview



S  
c  
h  
e  
m  
a  
B  
a  
c  
k  
e  
n  
d



# Configuration

[quattor]

location = /hardware/location

ip = /system/network/interfaces/\* / ip

hostname = /system/network/hostname

kernel = /system/kernel/version

mac = /hardware/cards/nic/\* / hwaddr

ipmi = @ipmi.py

[config]

xmllocation = /home/tsuerink/quatview/xml/

display = hostname,location,ip,kernel,mac,ipmi

[database]

hostname = ploeg.nikhef.nl

username = quattor

password = \*\*\*\*\*

database = quattor



# Status

- Beta version
- Need some documentation
- Test version in use @ Nikhef

Questions?