



**High
Luminosity
LHC**

HL-LHC Organization: Now and post HiLumi

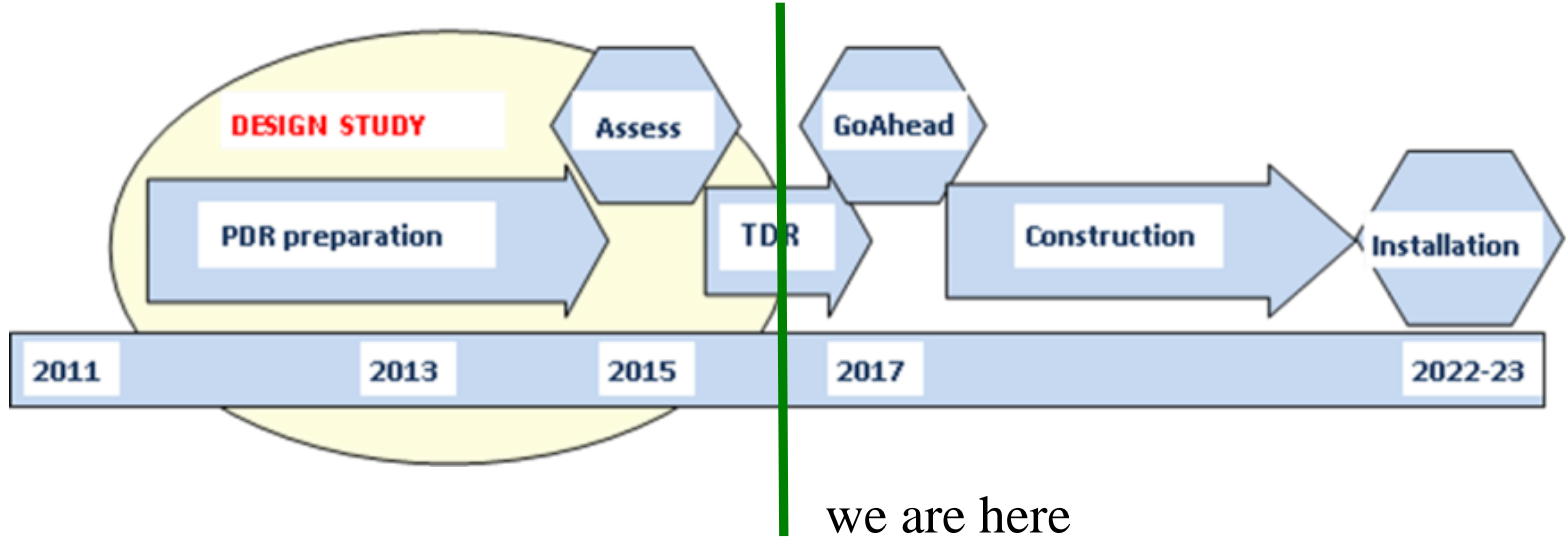


The HiLumi LHC Design Study is included in the High Luminosity LHC project and is partly funded by the European Commission within the Framework Programme 7 Capacities Specific Programme, Grant Agreement 284404.



HiLumi Design Study Timeline:

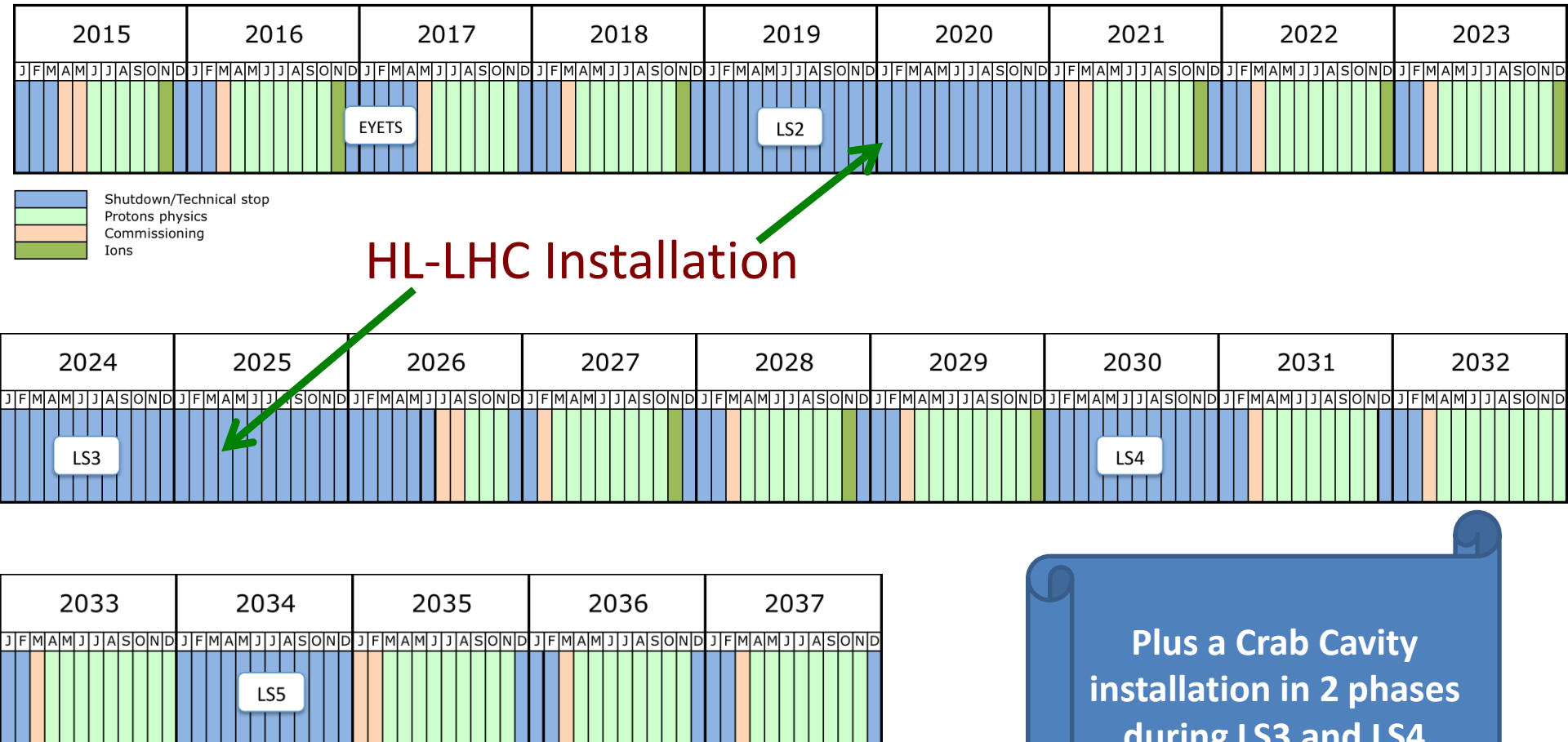
HL-LHC Installation : 2019-20 (LS2) and mainly in 2024-26 (LS3)



- ➔ PDR (Preliminary Design Report) in 2014;
- ➔ TDR (Technical Design Report) by end 2015

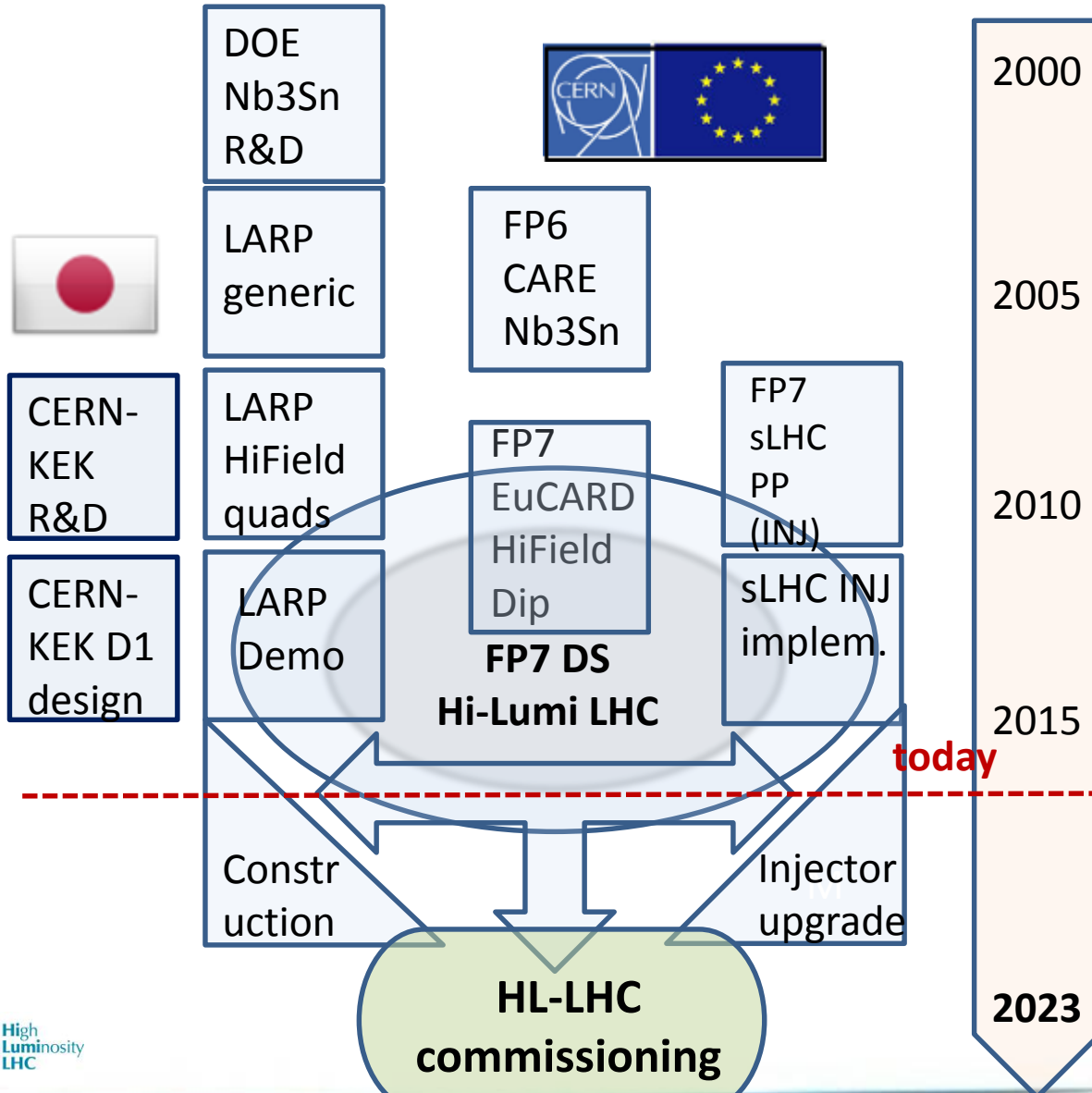


New Schedule: → HL-LHC CE during LS2





Collaboration: the long way



The HL-LHC project formally started in 2010; however it is the focal point of 20 years of converging International Collaboration



High Luminosity LHC Participant



- 20 partners worldwide
- 15 within FP7 & 5 within USLARP



Science & Technology
Facilities Council

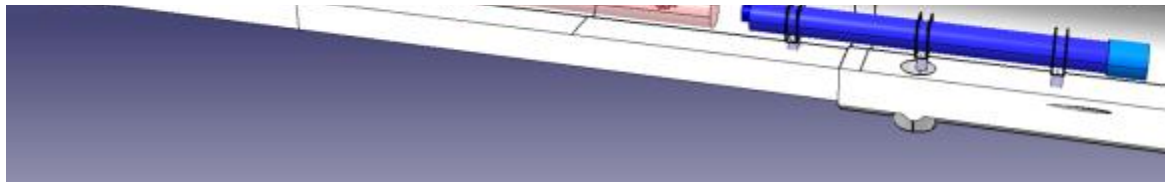


In-kind contribution and Collaboration for HW design and prototypes

HL-LHC studies and R&D have been build and relied strongly on international collaborations!

→ Will continue the HL-LHC project as international collaboration

We are in the process of preparing additional collaboration contracts with in-kind contributions (e.g. UK, Sweden, Greece and Canada, Russia, Georgia)



HO Correctors: Design and Prototypes
IT

Q4 : Design and Prototype **FR**

CC : R&D, Design and in-kind **USA**

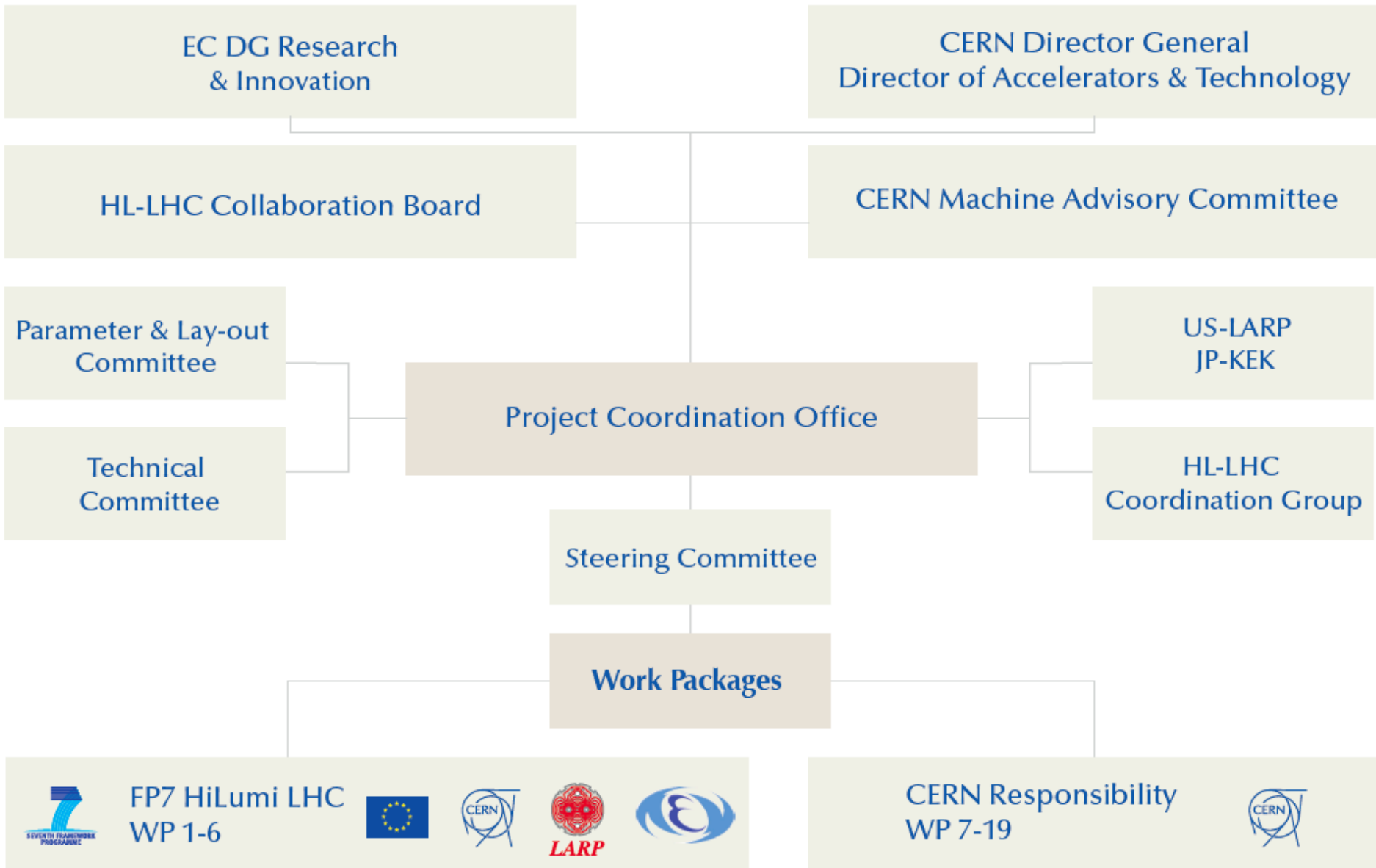
CC : R&D and Design **UK**

HL-LHC Organization: Now and post HiLumi

- Triggered discussions at the last general HL-LHC meeting at KEK
 - ➔ Summary of current organization
 - ➔ List of general questions
 - ➔ Presentation of some options for discussion
- Discussions went on over the course of 2015
 - ➔ Further discussion with CERN management
 - ➔ Input from all HL-LHC partners
 - ➔ Consideration of needs for for post FP7 collaboration partners
 - ➔ Taking into account the project transition from a Design Study to a Construction project



Project Governance during FP7 DS:



Project Governance: Managerial bodies

HL-LHC Collaboration Board



Top-level body for the HiLumi Collaboration
Has representatives of all HiLumi Partners
Meets at least once per year

HL-LHC Coordination Group



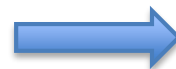
Forum for setting common and coherent set of goals, parameters & plans for the HL-LHC project,
Forum for official information transfer
Chaired by Project Leader, representatives of all Experiments (spokes persons); LIU, Research and A&T Directors; HL-LHC Technical coordinator

Project Coordination Office



Meets weekly:
PL and DPL, Technical Coordinator, Safety Officer, Budget and Resource Manager, Outreach, FP7 HiLumi Admin Manager, Integration Officer

HL-LHC Steering Committee



Forum for information exchange between the different Work Packages (1 / month)
All HL-LHC WP coordinators & USLARP represent.

Project Governance: Technical Bodies

HL-LHC TC



Defines the technical baseline of the project.
→ Technical Specification of the individual HL-LHC Components & Layout and Integration
→ Detailed technical discussions

HL-LHC PLC



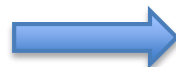
The PLC establishes and maintains a coherent and dynamic list of parameters and the associated hardware lay-out for the HL-LHC
→ Official approval of Layout and Parameters

LMC



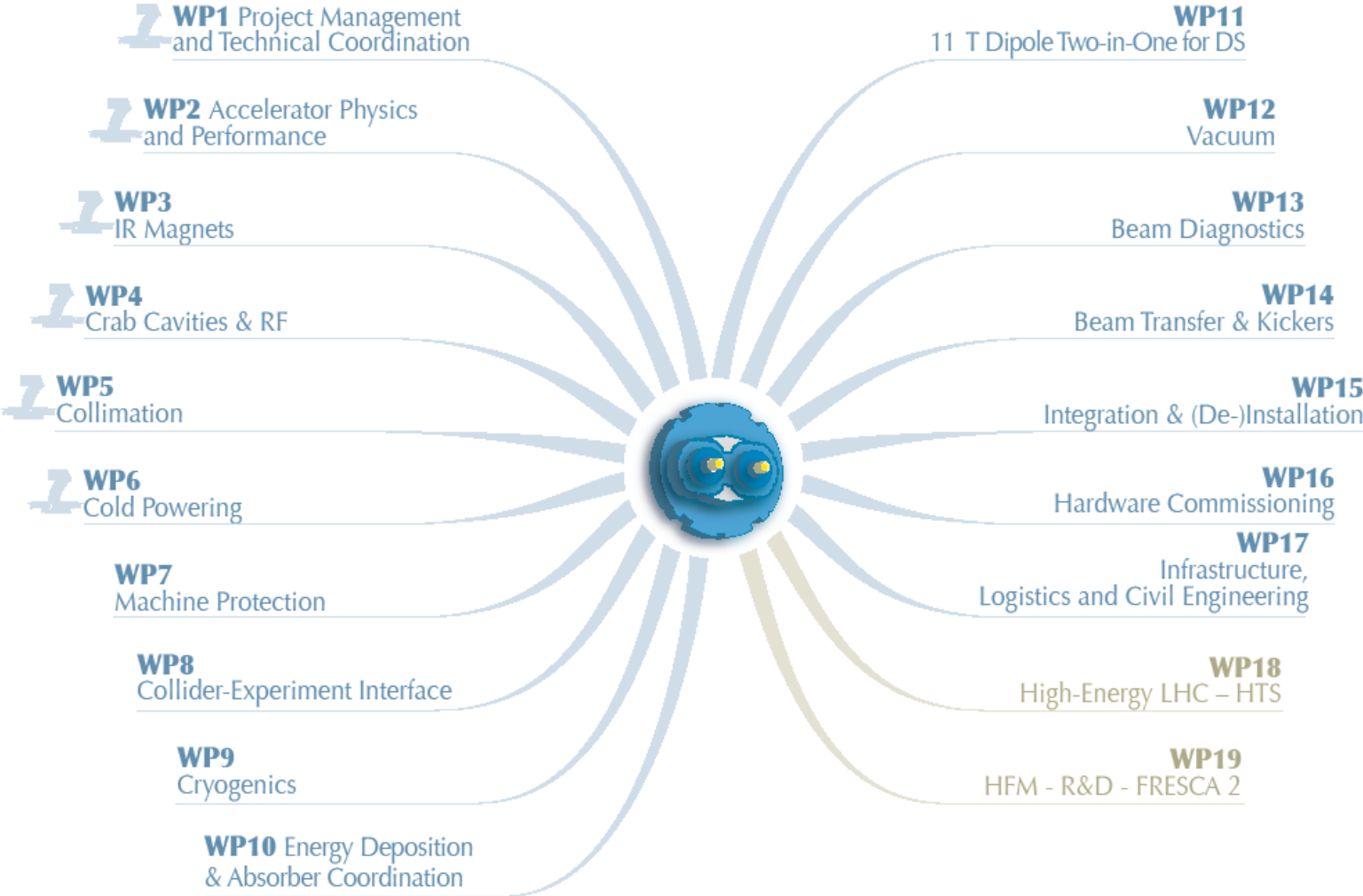
The central CERN LHC Committee:
Assures transfer of operational experience from LHC to the HL-LHC project and assures that LHC upgrades and modifications remain Compatible with the HL-LHC requirements.

C-MAC



External Scientific Advisory board.
Looks after all of CERN's accelerator facilities.

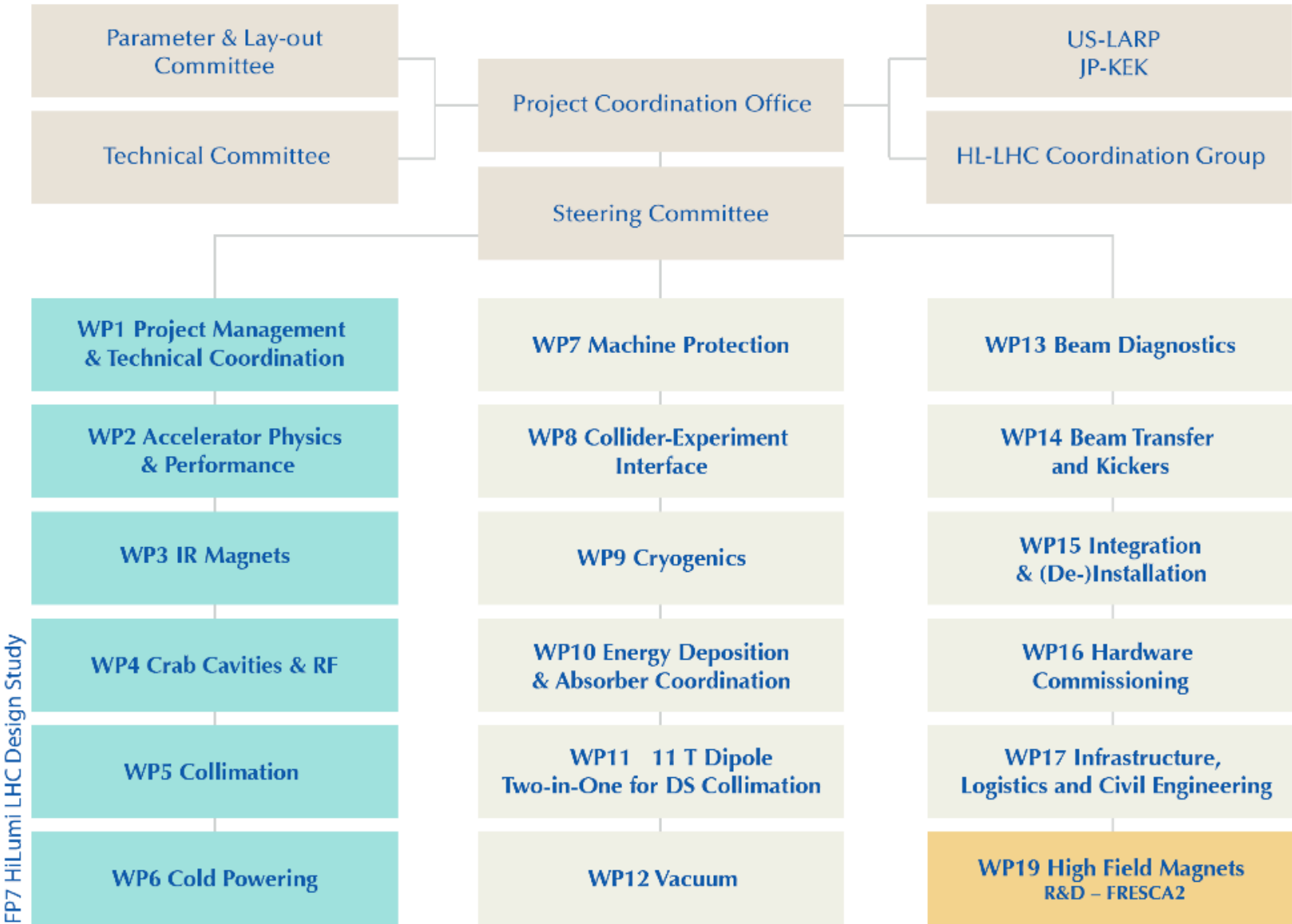
HL-LHC Work Packages:



19 Work packages with 6 WP under the HiLumi organization



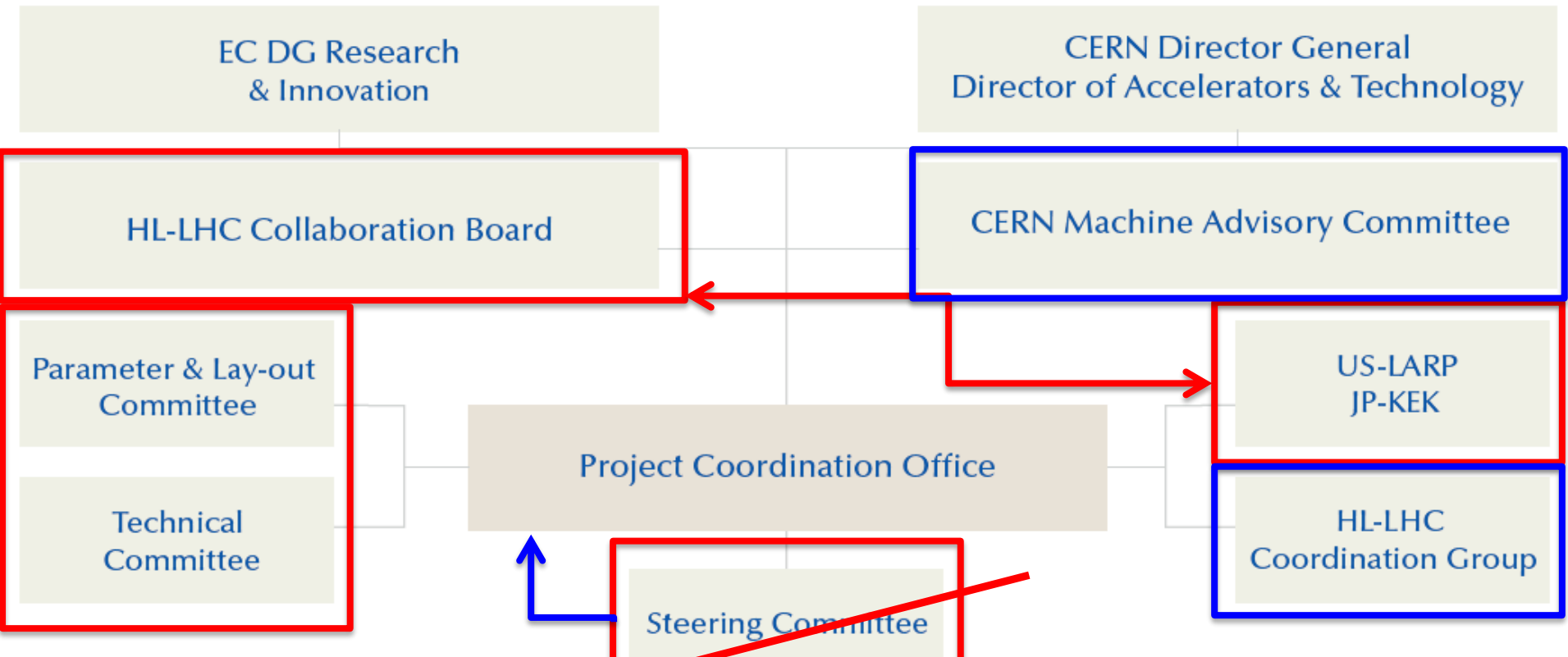
High Luminosity WP Coordination during DS:



FP7 HiLumi LHC Design Study



Project Governance during FP7 DS:



**Weak Connection with Department Leaders and Group Leader!!!
Must be reinforced for Production Project Phase!!!**

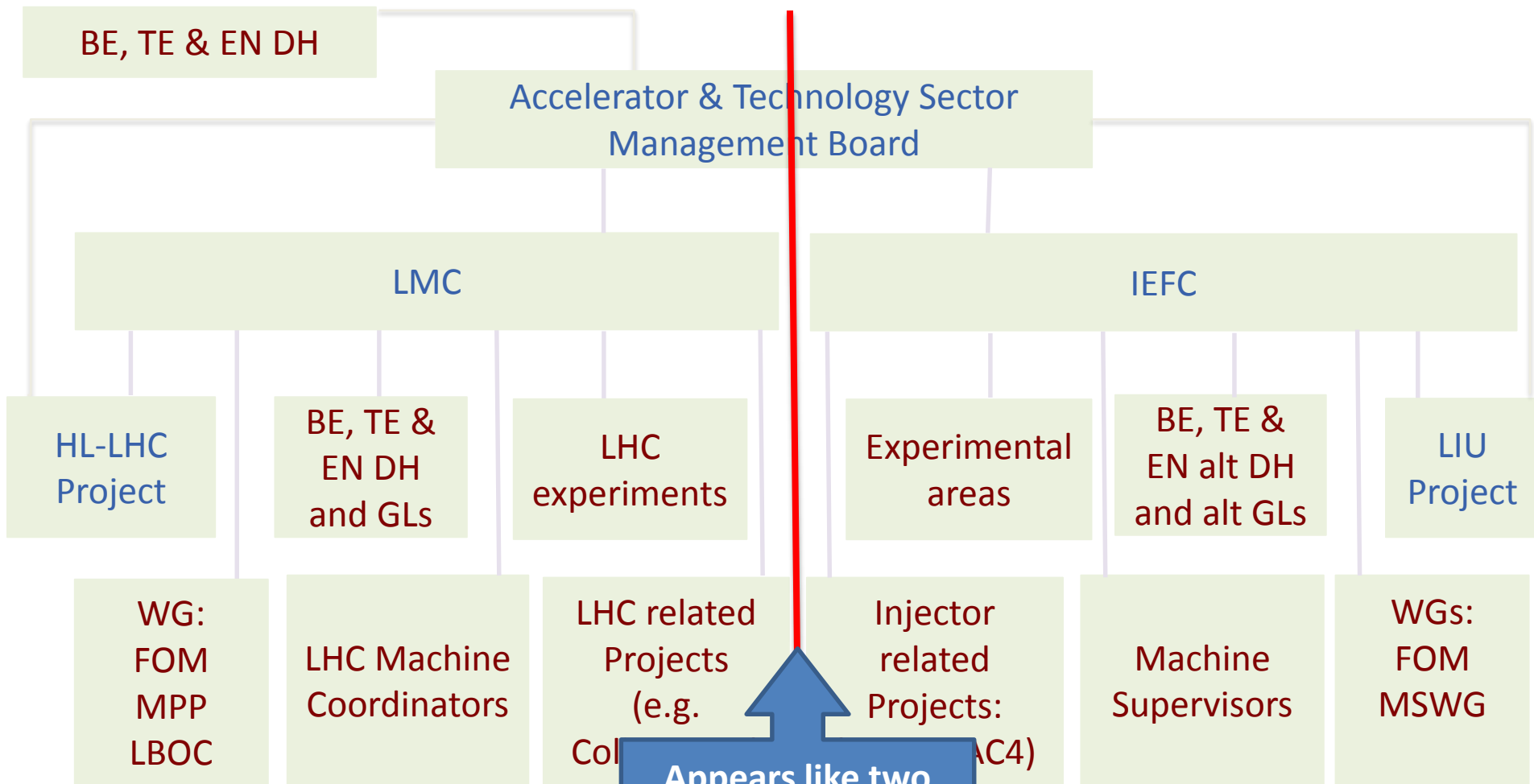
FP7 HiLumi LHC
 WP 1-6

CERN Responsibility
 WP 7-19

HL-LHC Technical Coordination Committee: TCC

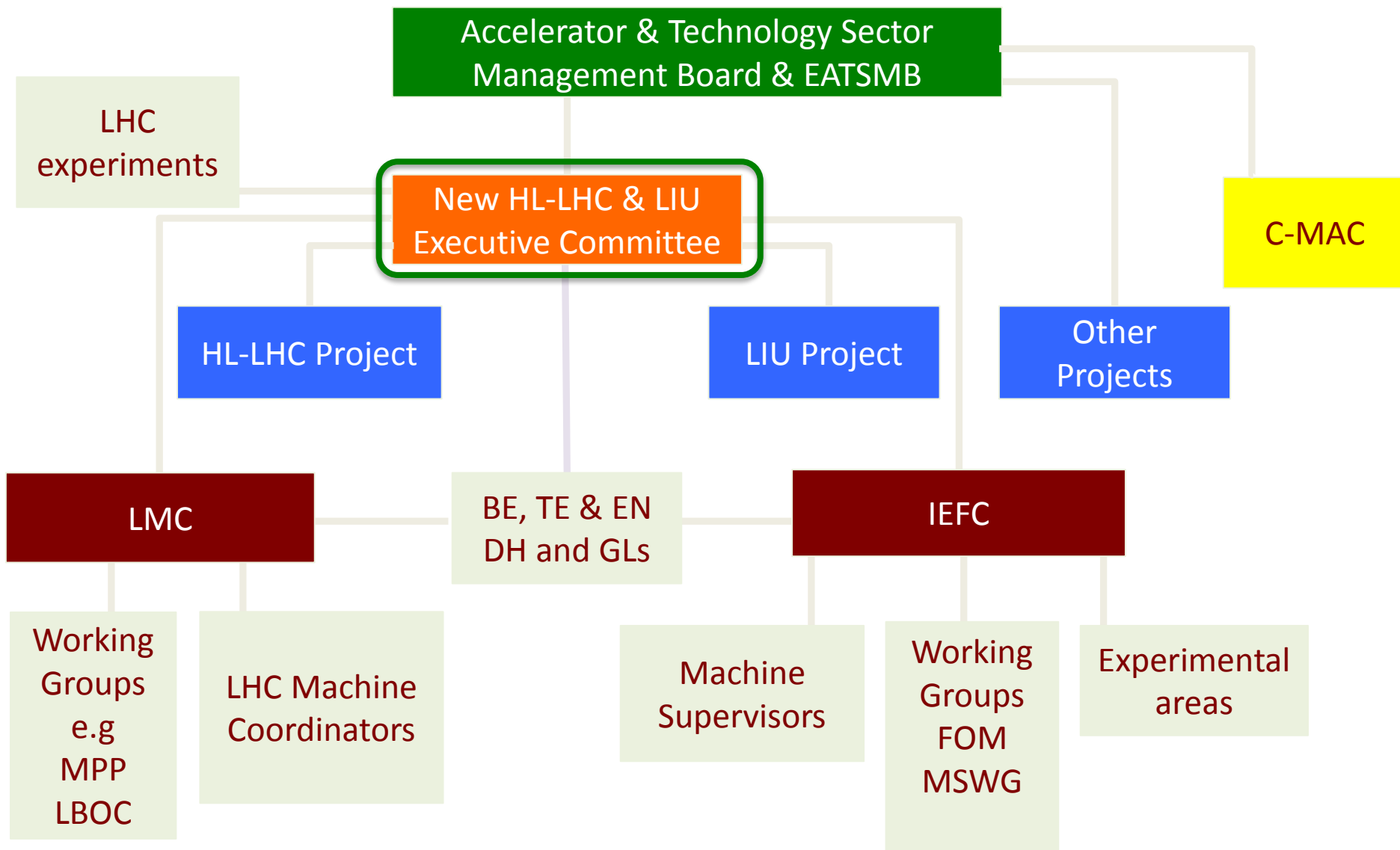
- Publication of HL-LHC TDR
 - ➔ Less frequent need for approval process from Parameter & Layout Committee
 - ➔ diminishing role separation between the HL-LHC PLC and TC
 - ➔ increased need for integration of departmental and group management for transition to prototyping, testing and construction
- New Technical Coordination Committee replacing the PLC and TC
 - ➔ Regular weekly meetings
 - ➔ aim for biannual review of the general HL-LHC parameters and layout
 - ➔ Version release
 - ➔ involvement of relevant GL

Accelerator Technology Sector Committees:

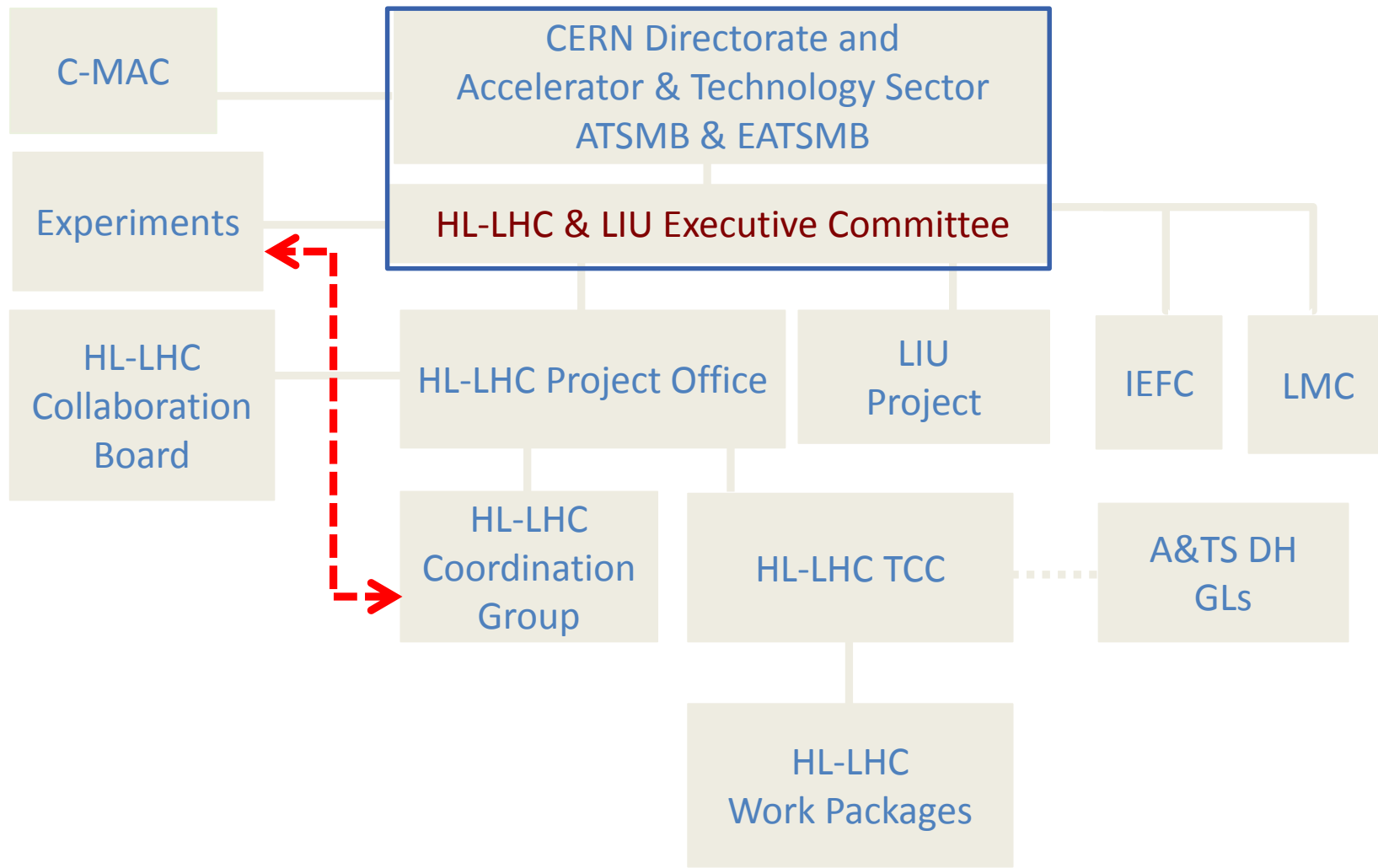


Appears like two Separate Worlds that are only connected via the ATS MB!!!

New Executive Committees within ATS:



Post FP7 HL-LHC Project Governance:



Post FP7 HL-LHC Project Office Organization:

