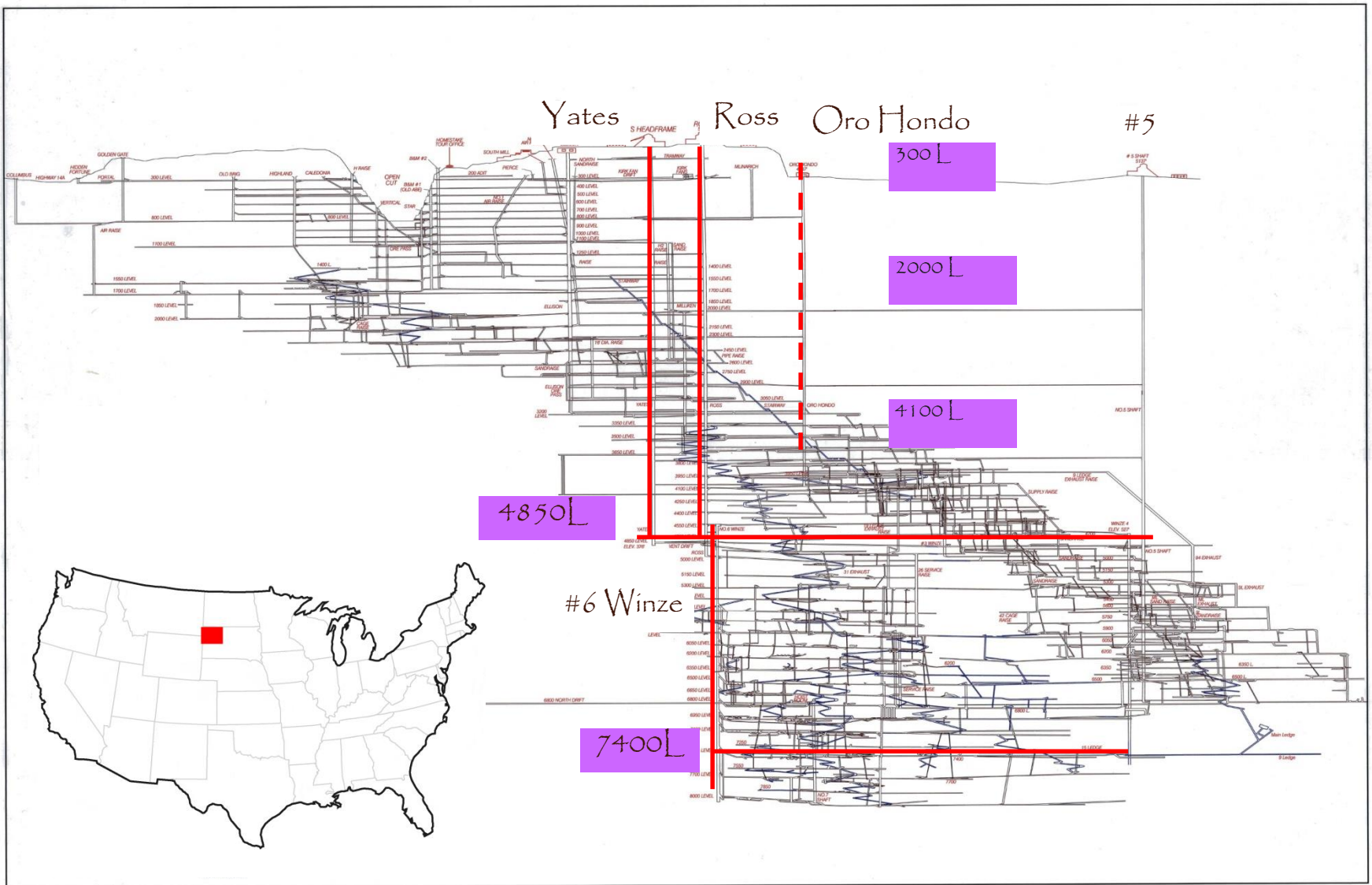


# Sanford Laboratory



# Ongoing Projects:

- **Dark Matter Searches**

LUX will run until 2016

LUX-ZEPLIN (LZ), selected it as one of three experiments that will be funded in the next-generation dark matter search.

- Construction to begin in 2016
- Commissioning date 2018

- **Majorana Demonstrator**

- array of germanium detectors, to search for neutrinoless double-beta decay of germanium-76

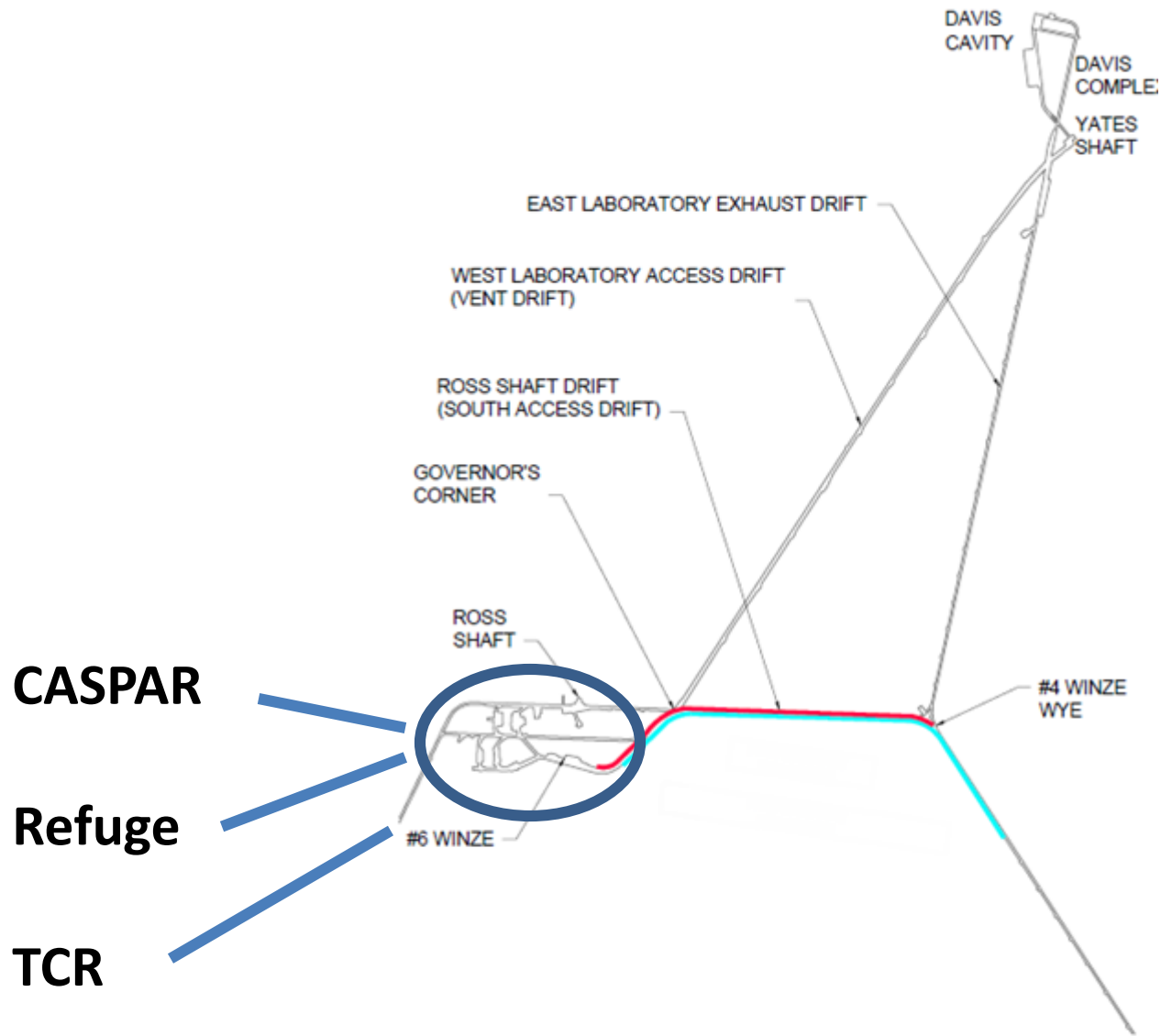
- **CASPAR** - Compact Accelerator System for Performing Astrophysical Research

- **BHSUC** - Black Hills State University Underground Campus

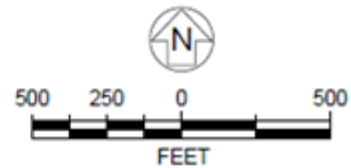
- **LBNF** - detector for DUNE

- **Visitor's Center**

- **Ross Shaft Refurbishment**



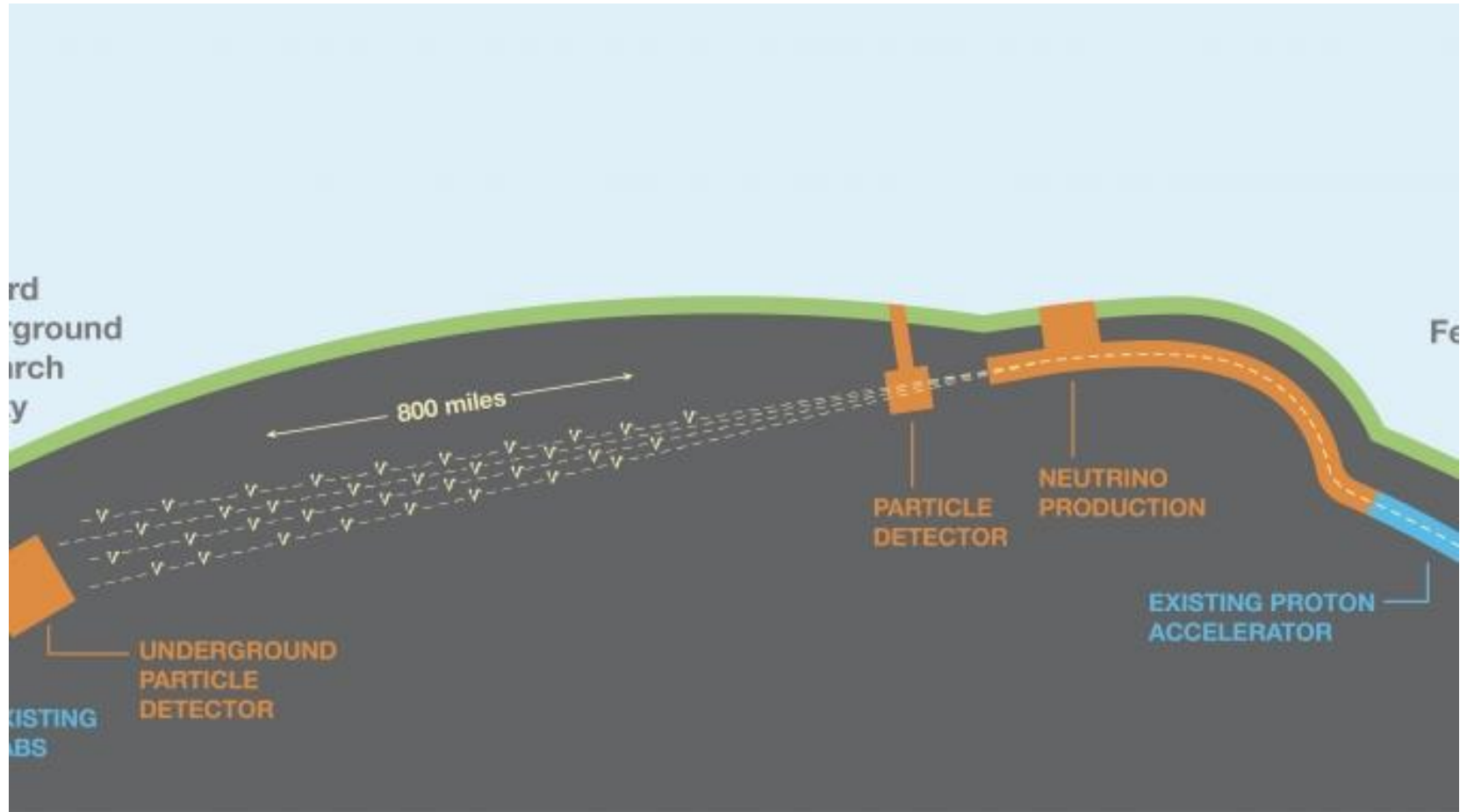
**LEGEND**  
 — APPROXIMATE LIMITS OF SCANNING  
 — APPROXIMATE LIMITS OF MAPPING

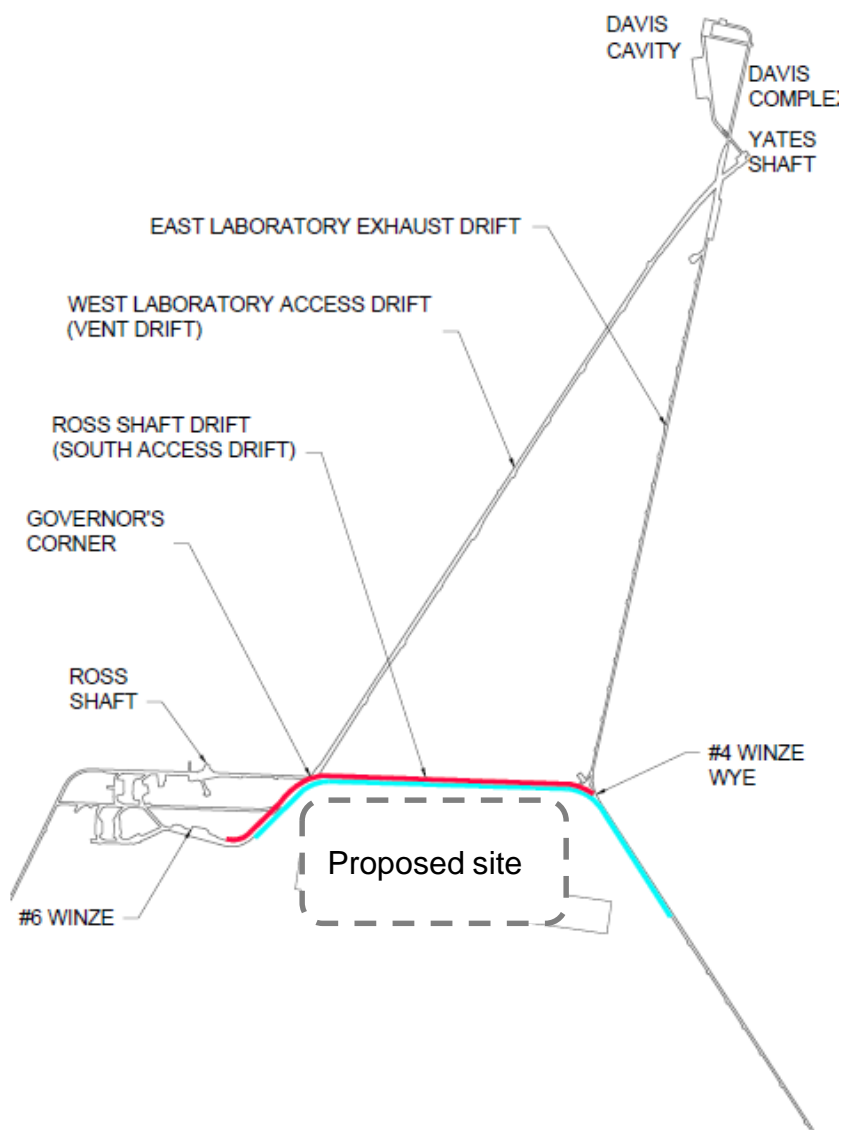


# CASPAR construction (shop area)



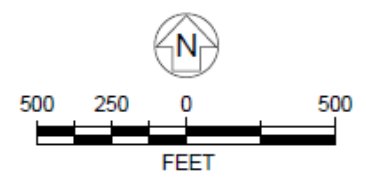
# DUNE - Deep Underground Neutrino Experiment



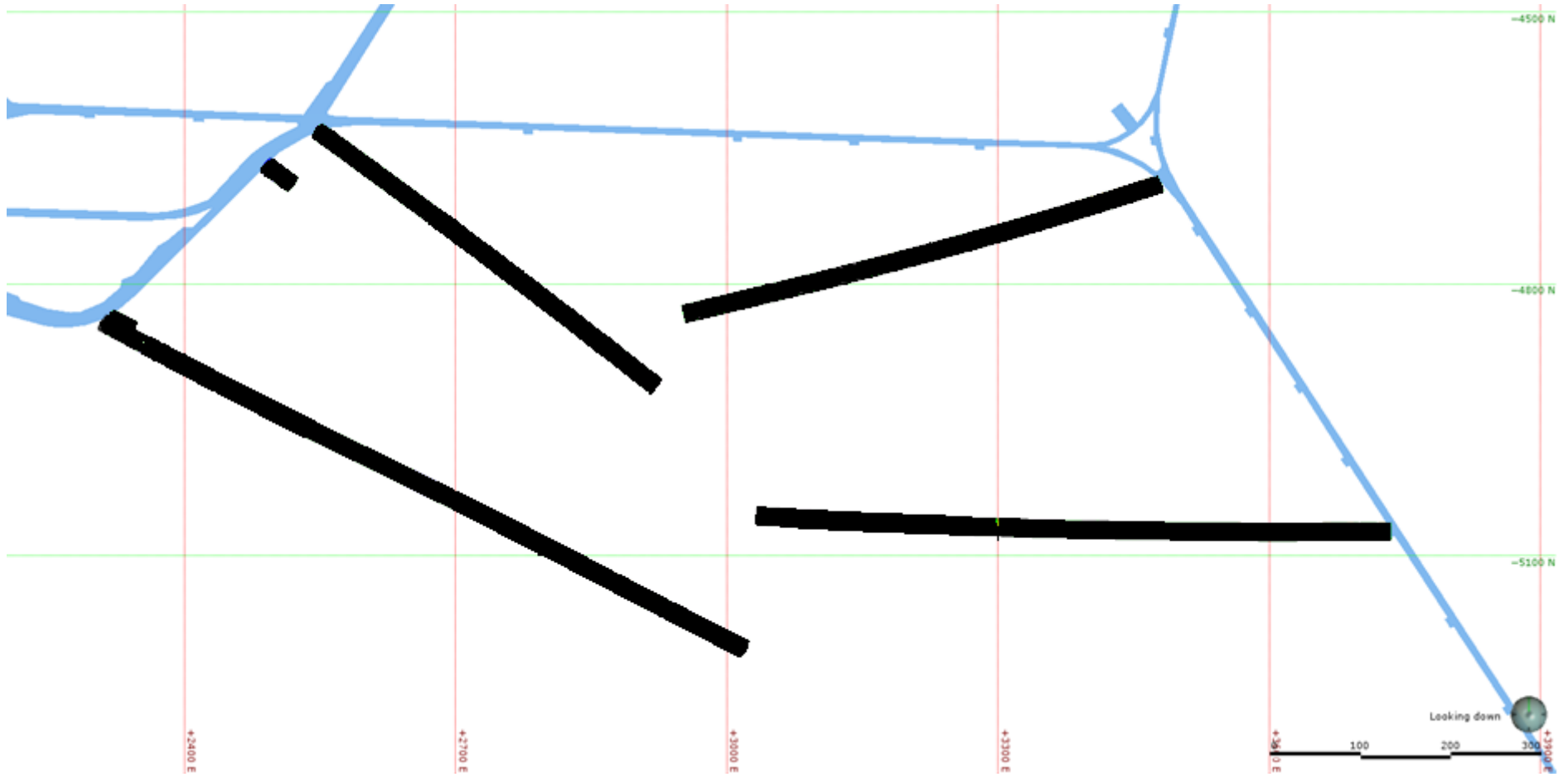


**LEGEND**

- APPROXIMATE LIMITS OF SCANNING
- APPROXIMATE LIMITS OF MAPPING



# Geotechnical Drilling for DUNE (LBNF)



**Visitor Center Construction  
(dedication to be held June 30,  
2015)**





# Visitor Center



# **Geoscience Experiments – ongoing and being proposed**

**Meeting on Underground Science to be held at  
South Dakota School of Mines**

**May 17 – 20, 2015**