

Welcome to 2nd CMS Induction session





Welcome to 2nd CMS Induction session

- Wednesday afternoon lectures
 - Spokespersons introduction
 - Tracking
 - Calorimetry
 - CMS communications & outreach
- Thursday afternoon group lunch and tour of P5
 - Buses leave building 40 at 12:00
 - Lunch together, Surface tour, under ground service cavern tour and lectures from run coordination and safety
- Friday afternoon lectures
 - Data taking
 - Data preparations
 - Data analysis
 - CMS Collaboration Board report
 - Practicalities of being a CMS member – all the useful trips to be effective



Thursday afternoon: Logistics for P5

- **Underground visit** of CMS Service Cavern with CMS Technical coordination
 - We have started again Run II – what is the off detector electronics, trigger and DAQ infrastructure that we need to take physics data?
- **Tour of surface infrastructure** and P5 site
 - What is behind getting a huge experiment like CMS to work
 - Control Room, Labs, power, cryo, cooling, PC farm etc
- **Run Coordination, Technical Coordination and BRIL**
 - Take advantage of chance to ask questions and participate in getting the experiment ready, tuning the CMS engine for Run II.
 - Ask questions about CMS and LHC
- Many experts will be in P5, your guides are special chosen, please take advantage of interacting with them



Important instructions for P5 visit

- Please wear closed shoes for the site visit to P5
 - No open backed sandals and no high heels.

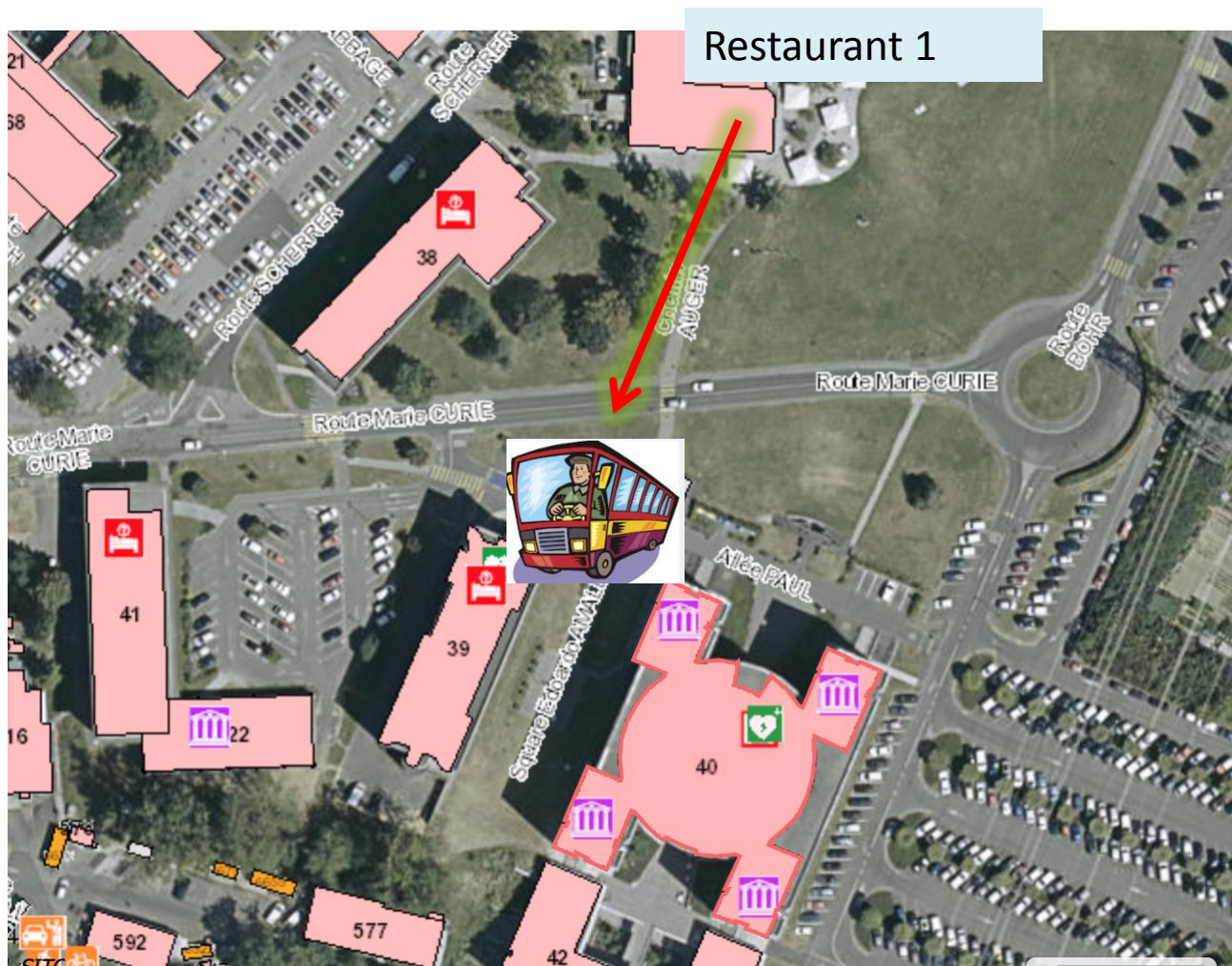


Outline of the afternoon for Thursday

- General program
 - 12:00 buses leave from building 40
 - 12:45-13:30 – lunch in the SX5 building
 - 13:30-17:00 talks/visits
 - 17:15 bus return to CERN

Bus to P5

- Leaving from outside building 40



Arrival P5, program begins with lunch in SX5 (3585)



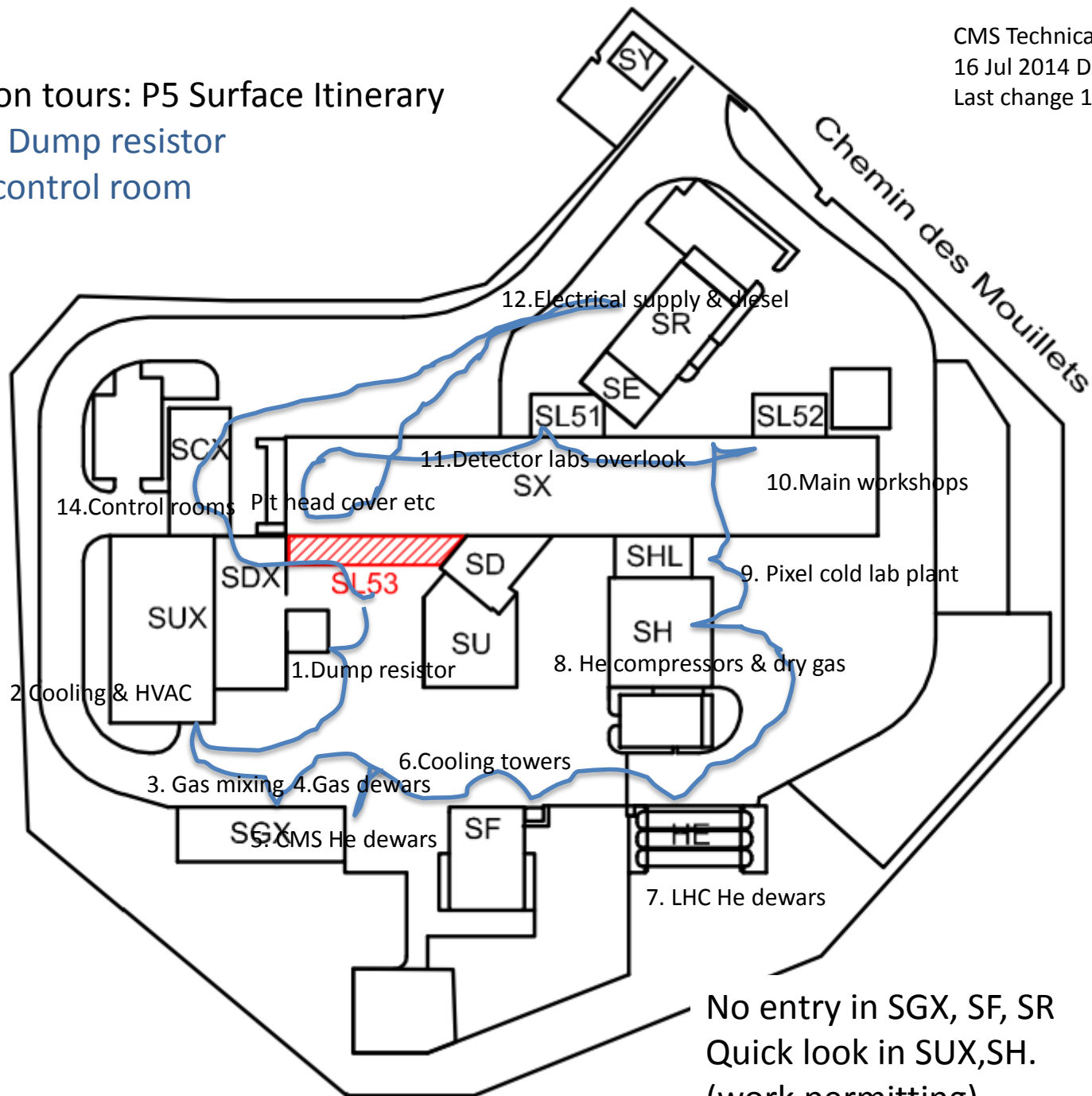


Afternoon visit in P5; Groups 1...6

Groups 1 ... 6 rotate between the 3 different activities

12:00	2 - Travel back to Meryin: Bus leaves from outside building 40		12:00 - 12:30
	Council Chamber, CERN		
	Lunch		
13:00	CMS P5, CERN		12:35 - 13:20
14:00	14 - Underground visit of CMS Service Cavern, Groups 1, 2 <i>Austin BALL et al.</i> P5, CERN 13:30 - 14:30	15 - Run, Technical Coordination and BRIL - Group 3, 4 <i>Christoph SCHWICK et al.</i>	6 - Surface visit <i>Andrea GADDI et al.</i> P5, CERN 13:30 - 14:30
15:00	26 - Run, Technical Coordination and BRIL - Group 5, 6 <i>Christoph SCHWICK et al.</i>	27 - Underground visit of CMS Service Cavern, Groups 3, 4 <i>Wolfram ZEUNER et al.</i> P5 14:40 - 15:40	7 - Surface visit - Group 1, 2 <i>Nicola BACCHETTA et al.</i> P5, CERN 14:40 - 15:40
	29 - Safety & Access - Group 5, 6 <i>Niels DUPONT et al.</i>		
16:00	0 - Surface visit - Group 3, 4 <i>Benoit CURE et al.</i> P5, CERN 15:50 - 16:50	2 - Run, Technical Coordination and BRIL - Group 1, 2 <i>Christoph SCHWICK et al.</i> The Peter Sharp Room, CERN	3 - Underground visit of CMS Service Cavern, Groups 5, 6 <i>Austin BALL et al.</i> P5, CERN 15:50 - 16:50
		1 - Safety & Access - Group 1, 2 <i>Mr. Niels DUPONT-SAGORIN</i>	
17:00	2 - Travel back to Meryin: Travel to P5 (CMS)		17:00 - 17:30
	Council Chamber, CERN		

Induction tours: P5 Surface Itinerary
Start at Dump resistor
End in control room



Induction tours: P5 Surface Itinerary

Start at Dump resistor

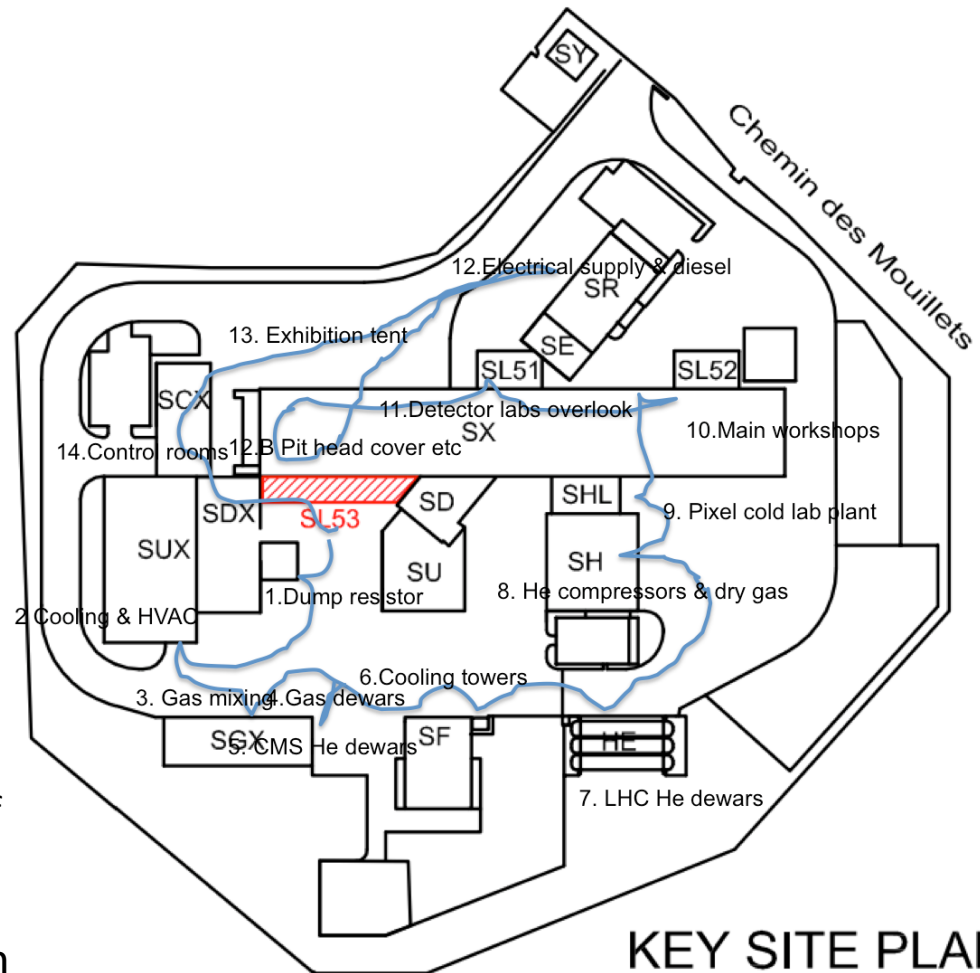
End in control room

CMS Technical Coordination

16 Jul 2014 DH

Last change 16 Jul 2014 AB

1. Dump resistor
2. Cooling and HVAC
3. Gas mixing
4. Gas dewars
5. CMS He Dewars
6. Cooling Towers
7. LHC He Dewars
8. He compressors & dry gas
9. Pixel cold lab plant
10. Main Workshops
11. Detector labs overlook
12. PIT head cover
13. Electrical supply & diesel
 - on way to tent explain orientation of tunnel, structure of Point 5 caverns, location of Points 4 & 6
14. Server room upstairs, Control Room



No entry in SGX, SF, SR
Quick look in SUX,SH.
(work permitting).



Photos aériennes

Plans officiels

Plan TPG

Aucun

- FLOOR
- SKY
 - 8
 - 7578
 - 6
 - 5
 - 4
 - 3
 - 2
 - 1
 - E
 - R
 - S
 - S2
 - S3

3502
(SCX5)

3585
(SX5)

3582
(SUX5)

3578
(SDX5)

3567
(SLN5)

3594

2555
(SD5)

3580
(SU5)

6850

N,SITG

30 (m)

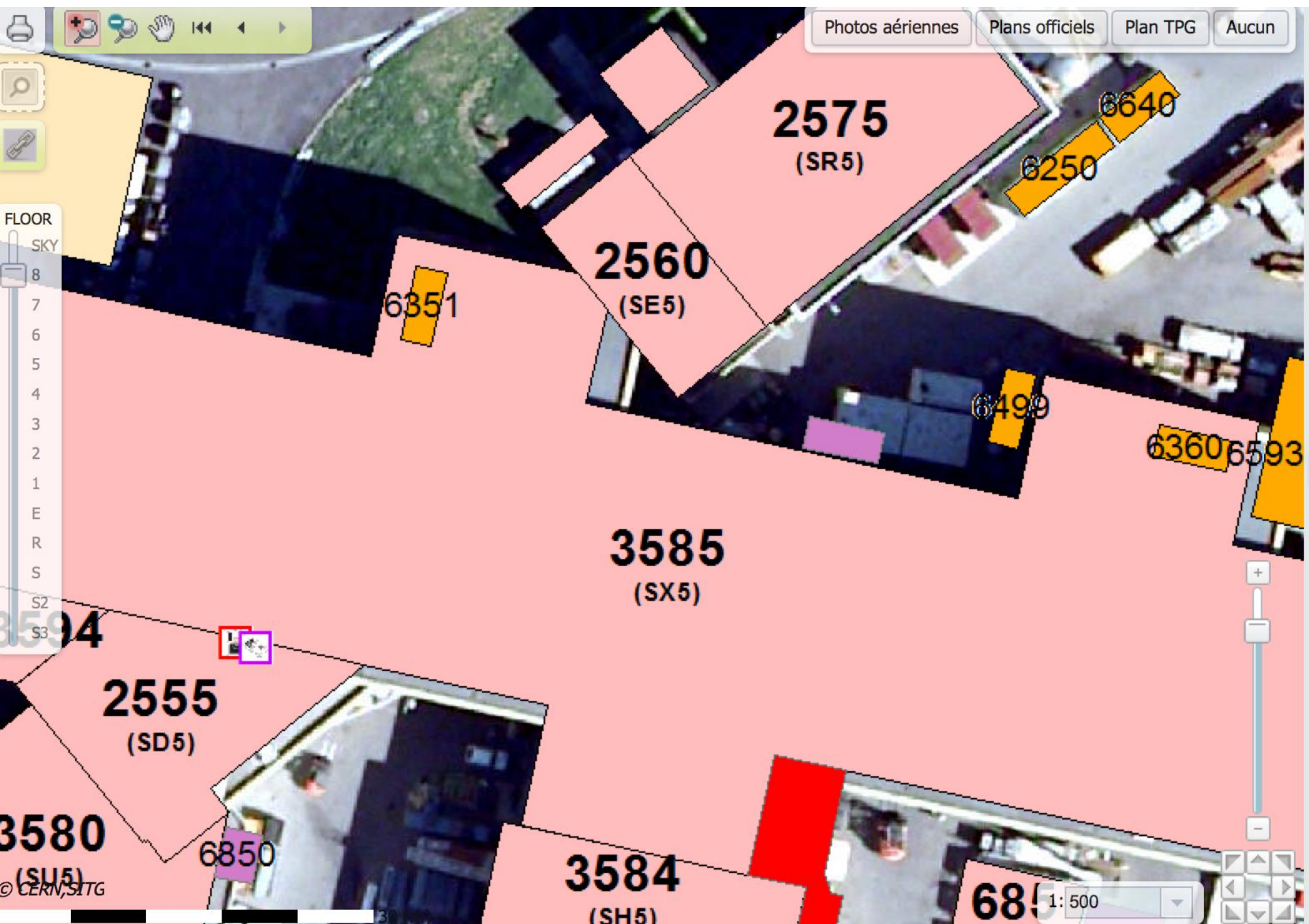
1: 500



Photos aériennes Plans officiels Plan TPG Aucun



- FLOOR
- SKY
 - 8
 - 7
 - 6
 - 5
 - 4
 - 3
 - 2
 - 1
 - E
 - R
 - S
 - S2
 - S3



© CERN, SITG

