



European Grid Initiative



User Community Services in the European Grid Infrastructure

01 March 2009

EGEE User Forum – Catania, Italy

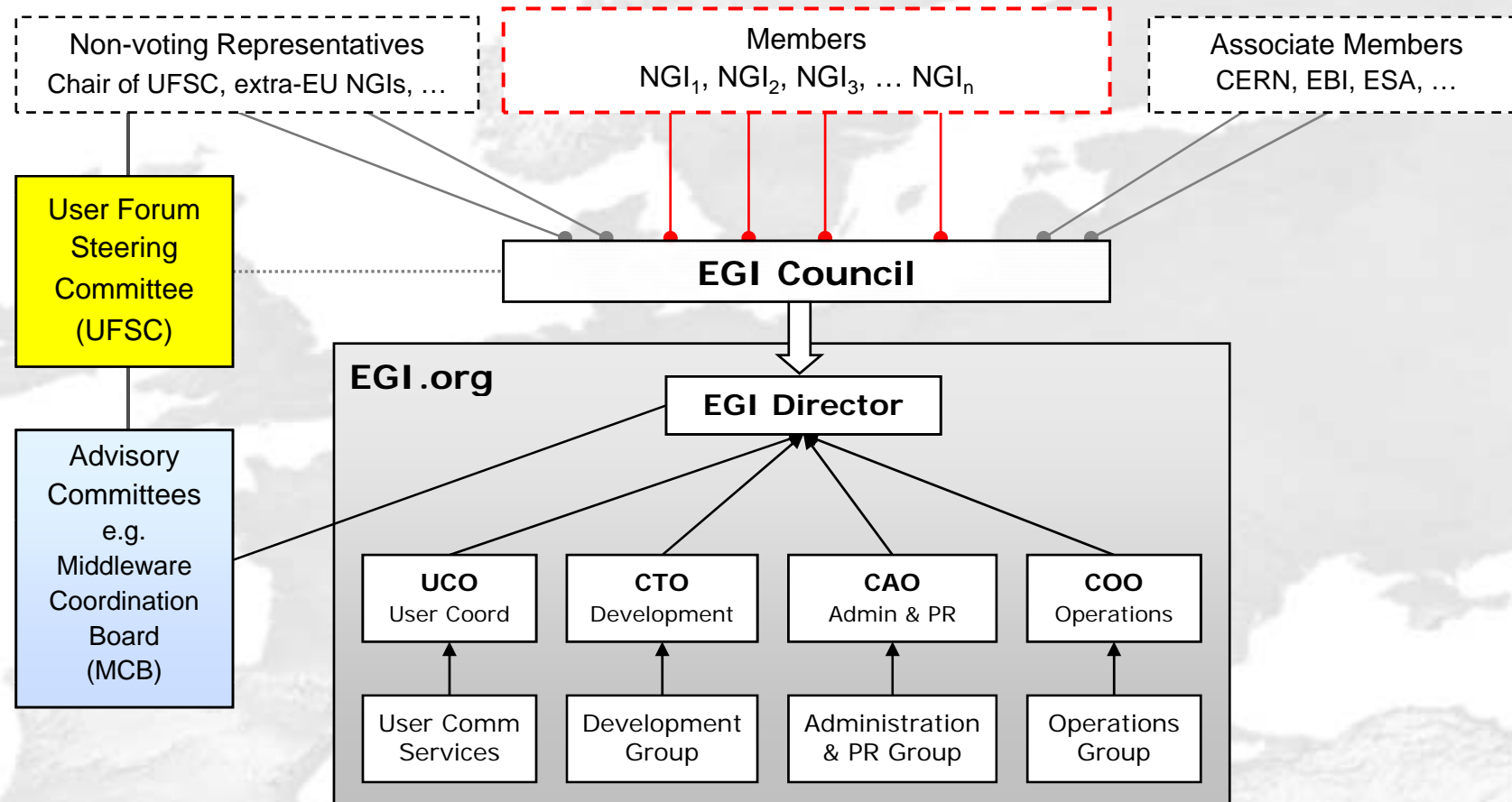
Diana Cresti, INFN and Charles Loomis, CNRS

dcresti@pd.infn.it - loomis@lal.in2p3.fr

Contents

- Representation of User Communities and EIROForum members in the EGI Management Structure
- The EGI Specialised Support Centres and User Forum
- EGEE Perspective
- Example: Life Science SSC
- Summary

The EGI Management Structure



EGI Council Associate Members

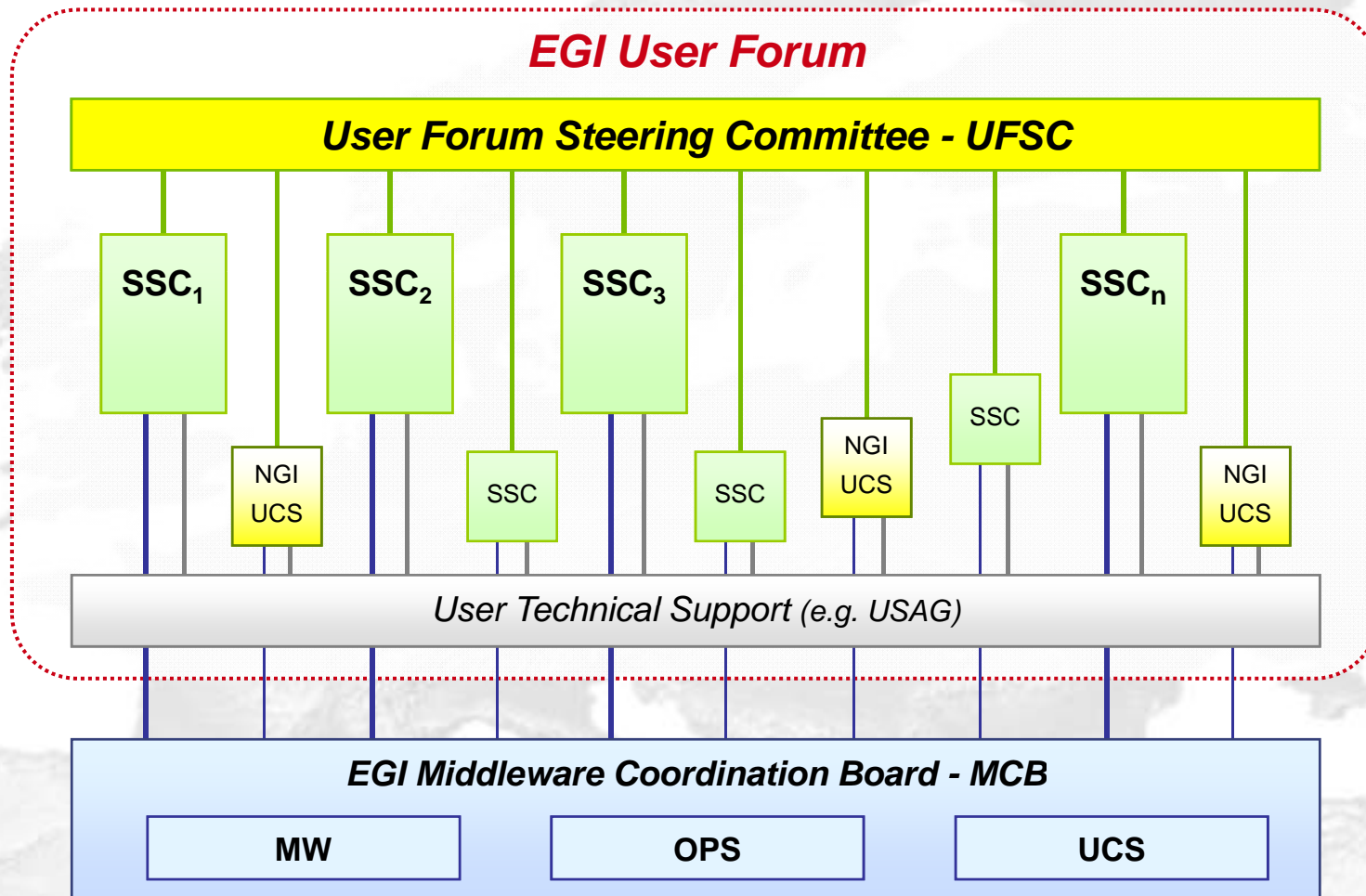
- Currently CERN;
- Have had some contact with people from ESA and EMBL-EBI to consider associate membership;
- No specific rules for this kind of membership; expect to get feedback from these institutions as the project evolves.

Specialised Support Centres

- The **EGI SSCs** are established and governed by the user communities.
- **In the context of EGI, an SSC is defined as a centre (or cluster of activities) that has a formal relationship with EGI** in terms of the collaborative UCS activities described in D3.1 and D3.2
- SSCs do not require full NGI consensus to be established
- Initial SSCs to be defined during the drafting of the EGI proposal; EGI_DS and EGEE are working with the user communities to help define these entities. An example for the Life Sciences is given below.
- In the future, SSC proposals will be evaluated by the EGI Council in consultation with the User Forum Steering Committee (details t.b.d.)
- SSCs should interact closely with the central EGI.org UCS team (described in the EGI Blueprint)

See also http://knowledge.eu-egi.eu/index.php/Specialised_Support_Centres

The EGI User Forum and SSCs



EGEE Scientific Communities

- EGEE clusters generally accept the SSC model as viable way to organize *scientific* user communities.
 - Likely that EGEE clusters will become SSCs.
 - Active planning: LS, ES, HEP, AA.
 - Expressed interest: CC, F, GO.
- Many open questions:
 - Scope: What community? Mandate?
 - Funding: Who pays? Short term, long term?
 - Procedures: Who approves? Who's eligible?

EGEE Support Activities

- SSC model will probably also work for current EGEE support activities:
 - Direct User Support
 - VO Support
 - Application Porting Support
- How will these types of SSC function?
 - How to define mandate, organization?
 - How to work when clients are outside of SSC?

“Outside” Users

- Not all users will be covered by an SSC.
- EGI must work to expand breadth and size of the grid user community.
 - Infrastructure must remain open to VOs and users outside of SSCs.
 - EGI must provide (directly or indirectly) standard support services to all users.

Example: Life Science SSC

- Several thematic clusters: **Bioinformatics, Medical Imaging, Drug Discovery** and **Health**.
- All these communities have expressed a need to access **cluster grids and supercomputers**, thus require integration of these resources on the grid.
- The SSC will dedicate specific effort for a **LS Gateway**
 - Providing friendly user interfaces
 - Collecting/linking to LS resources (data, tools, projects, ...)
 - Providing support for collaborative work
- Also very important are **international standards** (OGF, Web Services)

ESFRI → ELIXIR → EGI

INSTRUCT	Integrated Structural Biology Infrastructure	www.instruct-fp7.eu
Infrafrontier	Infrastructure for Phenomefrontier and Archivefrontier	www.infrafrontier.eu
EATRIS	The European Advanced Translational Research Infrastructure	www.eatris.eu/
BBMRI	European Biobanking And Biomolecular Resources	www.biobanks.eu
ECRIN	Infrastructures For Clinical Trials And Biotherapy	www.ecrin.org
ELIXIR	Upgrade Of European Bioinformatics Infrastructure	www.elixir-europe.org

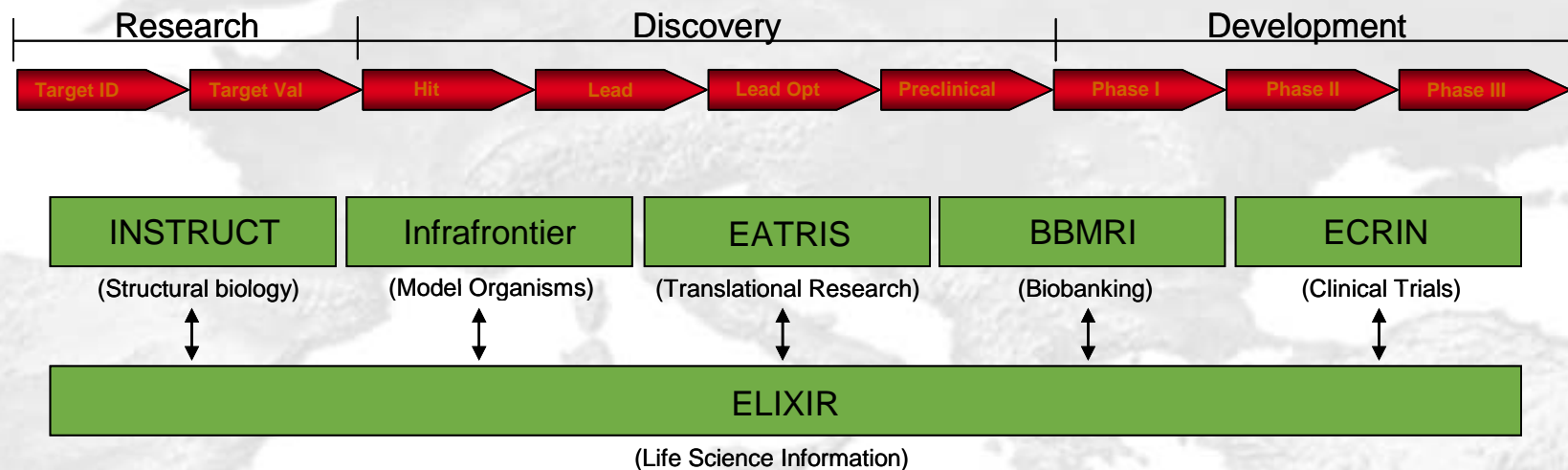
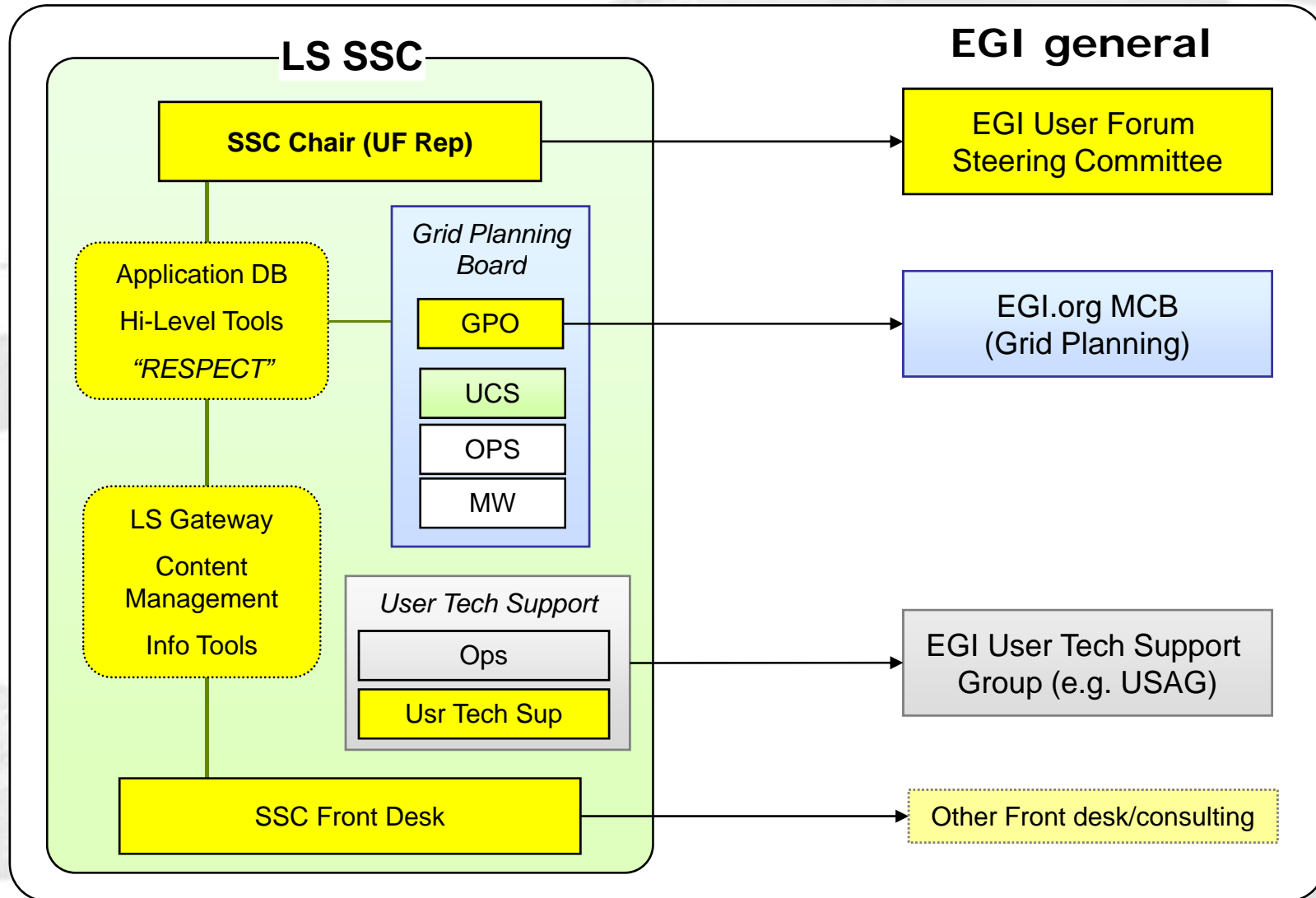


Image courtesy of Andrew Lyall (Elixir)

Life Science SSC – possible UCS Layer



Summary

- SSC model is generally viewed as viable means of organizing the user community.
- How an SSC works inside of the EGI organization has been defined.
- Resolving open SSC questions via concrete proposals for SSCs from EGEE clusters.

Future Work

- Must understand how non-scientific SSCs will be formed and will function.
- Must understand how user communities “outside” of SSCs will be served by EGI.
- These questions will be tackled by a dedicated User Communities task force that includes NGI representatives (or their delegates), collaborating projects, and user community support specialists.
- Recommend that NGIs have similar taskforces, and begin to delineate their level of contribution to SSCs and other NGI international tasks