



European Grid Initiative



From Blueprint to EGGI Implementation

... and may open questions

EGGI Transition Workshop

Catania

March 2nd, 2009

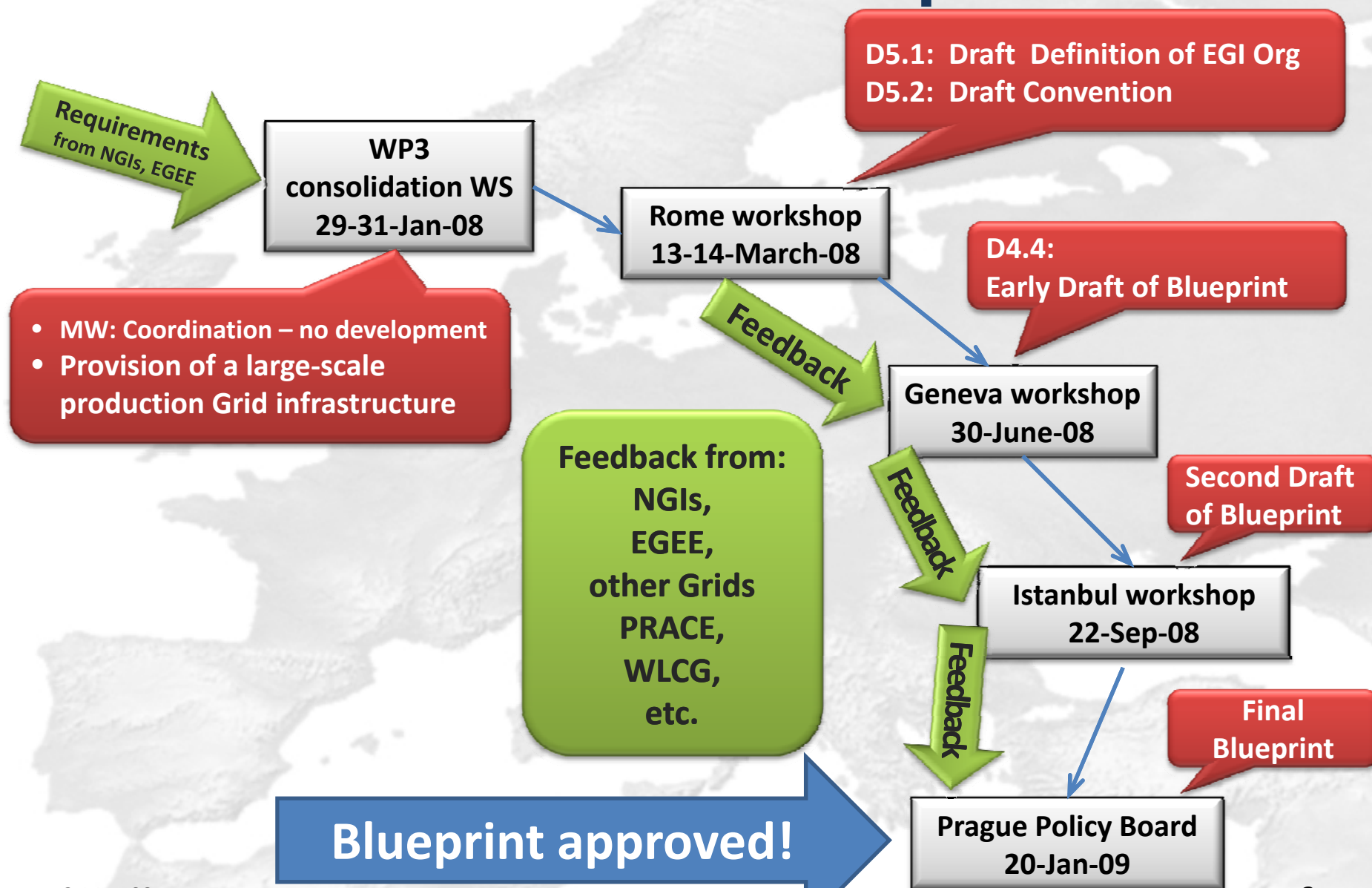
Jürgen Knobloch, CERN

EGGI_DS Technical Director

Outline

- Summary of Blueprint
 - http://web.eu-egi.eu/fileadmin/public/EGI_DS_D5_4_V300b.pdf
- Steps for establishing EGI.org
- List of NGI International Tasks
- Next steps for each task
- NGI questionnaire
- Conclusion

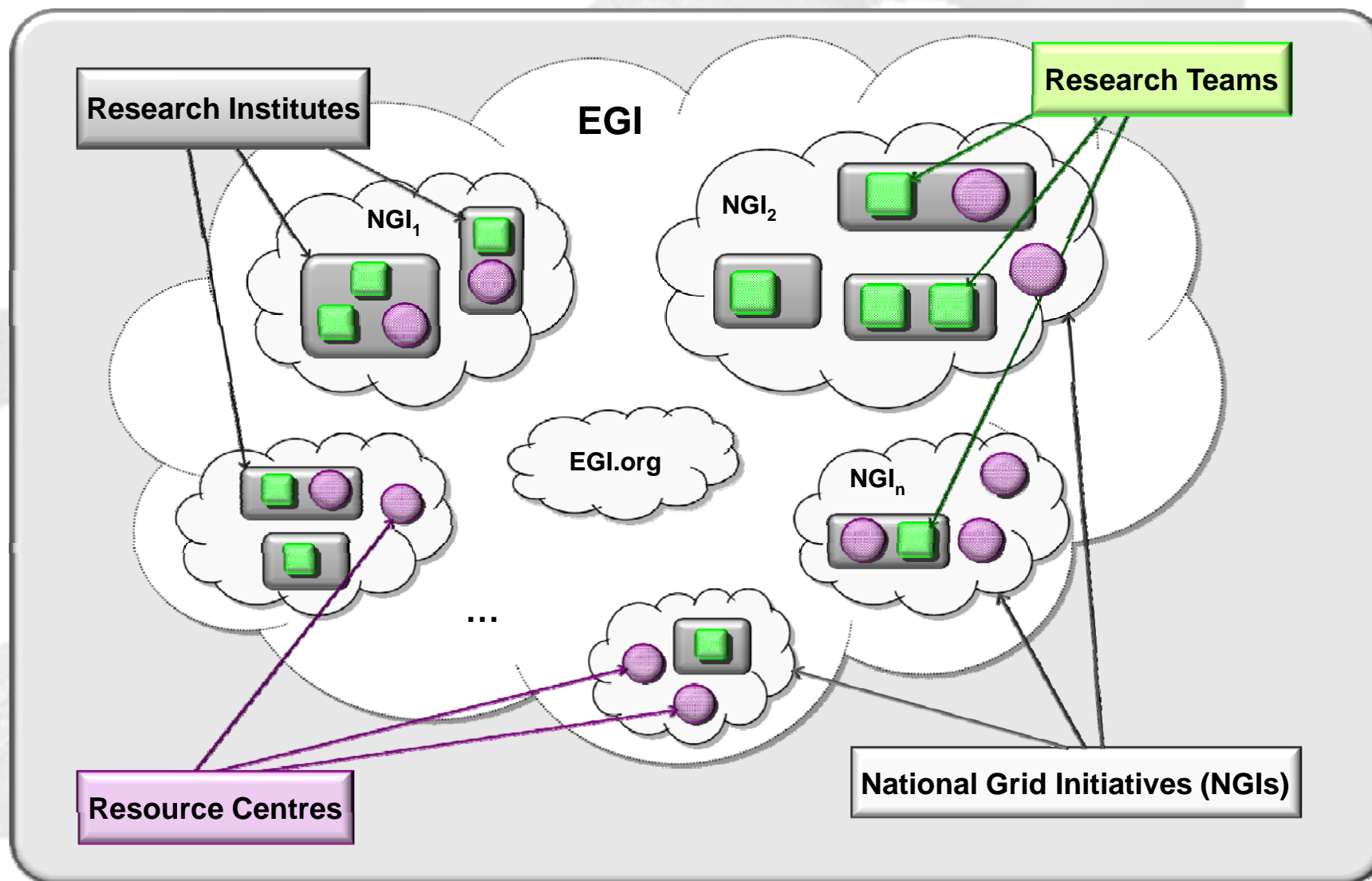
The Road to the EGI Blueprint



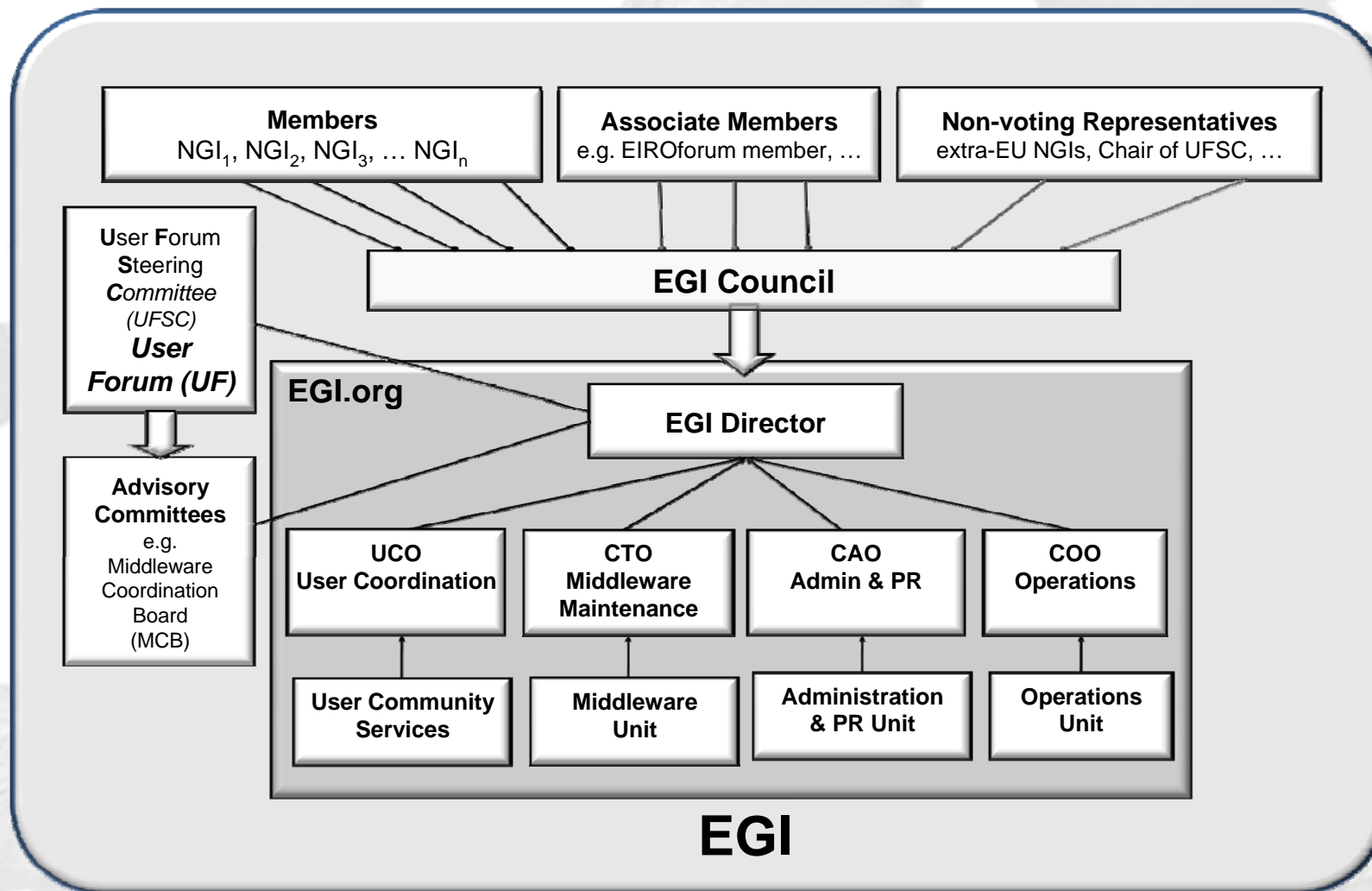
European Grid Initiative - EGI

- Partnership between National Grid Initiatives (NGIs) and coordinating body EGI.org
- Main functions:
 - Operations and security
 - Middleware
 - User community services
 - External liaison tasks
- Most activities performed by NGIs

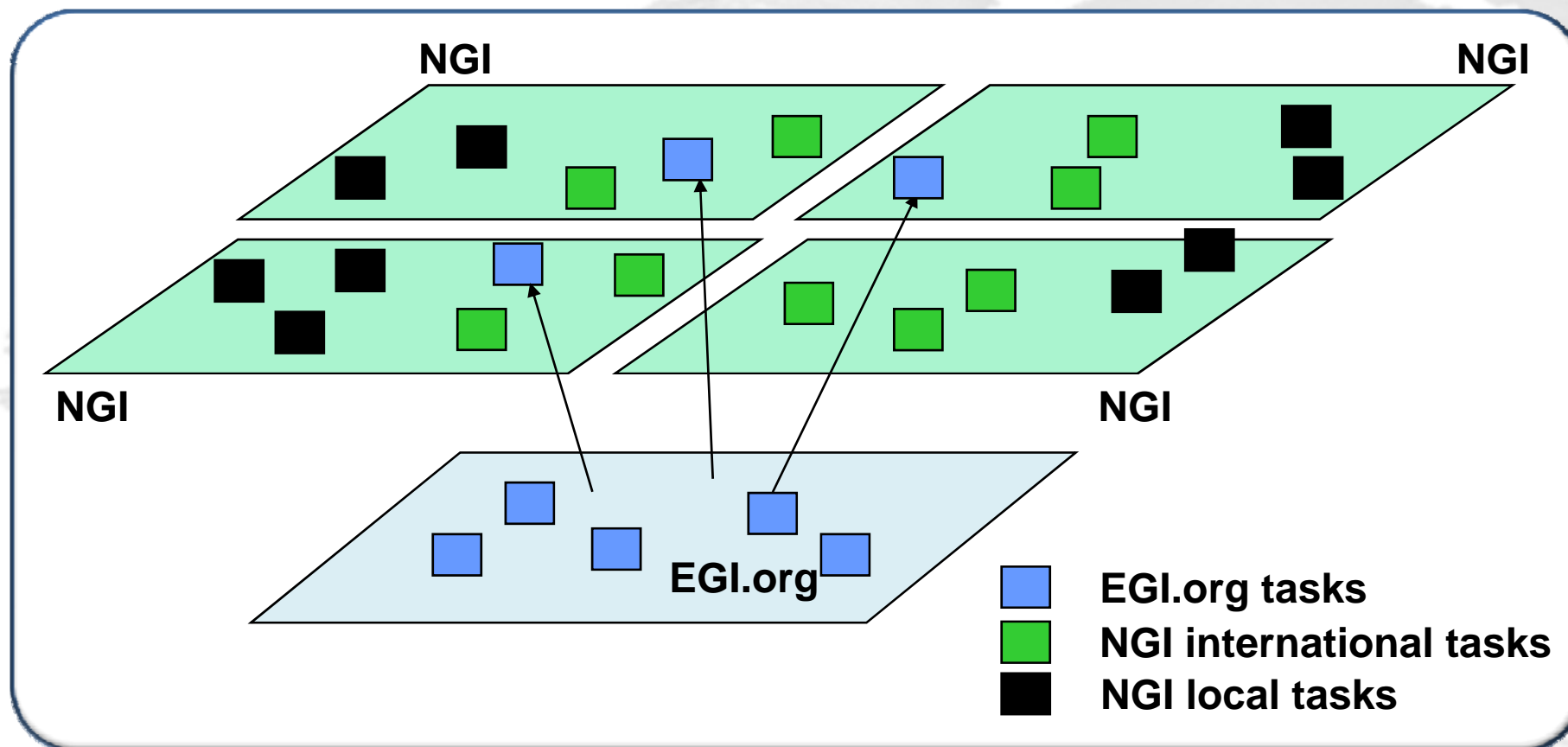
The EGI Actors



EGI Management/Governance



EGI.org and NGI Tasks



Resources and Funding

- EGEE and similar European Grid infrastructure projects rest on three pillars for financial support:
 1. Co-funding by the EC
 2. Matched national funding
 3. National/institutional funding for computing infrastructures and their operation
- Long-term primary EGI funding is at the national level
- EC funding for
 - Initial funding during startup
 - Coordinating national efforts and activities spanning several countries
 - Supporting innovation

Resources for EGI.org

Costs for	EGI.org Costs (in FTE/a)
Operations	17
Middleware interfaces and final certification	8
User Community Services	11
External Liaison Functions	4
EGI.org Management and Administration	11
Total	51

Resources in NGIs

Task	Small NGI	Medium NGI	Large NGI	“Sum”
Operations and Security	2-4 FTE	5-10 FTE	14-22 FTE	225 FTE
International User Community Services	0.5-1.7 FTE	1-2.5 FTE	1.5-4 FTE	60 FTE
Specialised Support Centres				50 FTE

Based on current experience
These resources exist in countries with operational grid infrastructure

EGI Financial Reference Model

	NGI International tasks		Middleware maintenance	EGI.org	Total
	Operations	User services			
Costs					
EGI Effort (FTEs)	225	110	70	51	
EGI costs (M€/year)	20.25	9.90	6.30	4.59	41
Income					
NGI membership fees (M€/year)				1,0	1
EC Contribution (M€/year)	10.125	4.95	3.15	1.80	20
NGI, Middleware consortia and EIRO/ESFRI co-funding Contribution (M€/year)	10.125	4.95	3.15	1.80	20

Funding view of NGI



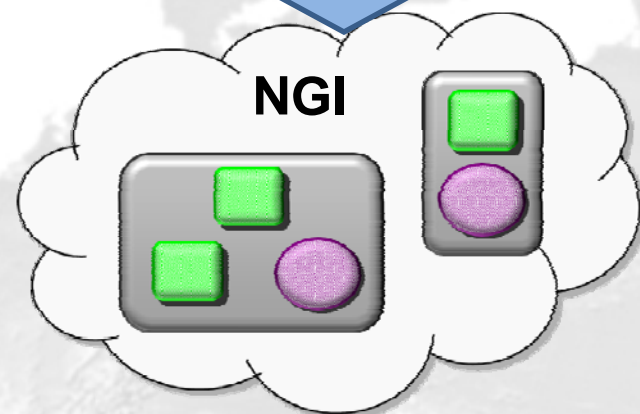
EC Funding

600 k€

600 k€



National
Co-Funding



NGI

“Average medium
sized NGI”

EGI.org

Membership
Fees **30 k€**

Blueprint: Transition Milestones

- **January 20th:** Vote for approval of the EGI Blueprint by the EGI_DS Policy Board; first list of NGIs subscribing to the principles of EGI.
- **March 2nd:** Catania Workshop – Approval of the EGI location; common work plan with EGEE on transition scenario.
- **Spring 2009:** Transition team in place with authority to prepare key tasks and to negotiate with the EU; work on calls for EC funding
- **Summer 2009:** The core of the EGI project transition team is agreed and confirmed by the Policy Board; latest date for formal establishment of the EGI.org .
- **Autumn 2009:** The EGI project proposal is prepared and submitted to the EC.
- **January 1st, 2010:** EGI.org is operational, with all key personnel appointed (who may not yet be working for EGI.org, as e.g. still working for EGEE III or any other project).
- **April 2010:** EGI.org fully operational, taking over from EGEE-III and other CPs as they end

Steps for Establishing EGI.org

- Select location – today?
- Legal structure in place - ?
- EGI.org Director in place - ?
- EGI.org first budget available - ?
- All required personnel in place - ?

International Tasks: Functions

The following main functions are currently required for the functioning of grids:

- Operations
- Operations Tools
- Coordination
- Middleware
- User Community Support functions

Operations Functions

- Global Operation Support
- Coordination of networking operations
- Roles currently performed by ROCs
- EGI-wide Operations Coordination

Operations Tools

- Accounting Portal
- Operations Portal
- Monitoring Tools
- Configuration Management

Coordination

- Operational Coordination
- Security
- Deployment Coordination
- Networking

Middleware

- Maintenance of Middleware
- Testing and Deployment
- Liaison with UMD

User Community Support functions

- User Authentication & Authorization
- Documentation and Training
- Specialized Support Centres

For Each Task:

- Describe current status, where it is done, current effort
- Possible evolution to EGI – sharing EGI.org – NGI
- SLA
- Agreement with task owner some kind of “MoU”
- Become part of EC call

March 09

April 09

June 09

Sept 09

Dec 09

To be nominated by NGL:

- **NGI Operations Manager:** Responsible for the overall effective running of the NGL and its sites.
- **NGI Security Officer:** Responsible for the operational security within the NGL and its sites.
- **NGI Operations Tool Manager:** Person responsible for the operations tools being developed or deployed within the NGL and their interfacing into any central monitoring infrastructure.
- **NGI User Support Manager:** Responsible for running the helpdesk within the NGL and defining and delivering the user support model.
- **NGI First Line Support Manager:** Responsible for delivering the first level operations support in the NGL by ensuring sites resolve problems spotted by the NGL monitoring (currently called R-COD) and defining the operations procedures and best practices in the NGL.
- **Networking Manager:** Liaison to NREN for Grid-specific tasks
- ... and – if available - contact persons for: Certification, Accounting, Middleware Deployment, Documentation & Training, Dissemination, extra EU-Grids

Transition Period

Transition from EGEE and similar European projects

- already moving towards the EGI model:
 - Joint Research Units (JRU) are already established in 21 countries – a good starting point for NGIs
 - De-centralisation is an essential part of the EGEE-III strategy
 - Tight collaboration between EGEE-III and EGI_DS has been established and a common workplan is in place
 - EGEE-III Deliverable DNA 1.4:
 - “Plan for a Transition to a Sustainable Infrastructure”
 - ... to be complemented by EGI_DS document D5.5: “Transition Scenario from Current Grid Infrastructures to EGI”- due in June 2009
 - Still many open questions

Next steps

Answer the questions – one by one

- Identify location of EGI.org
- Further clarify roles and maturity of NGIs
- Identify key positions in each NGI
- Establish the EGI MoU – start signature process
- Identify key people in EGI.org
- Prepare calls for EC funding
- Work with EGEE and related projects to ensure smooth transition
- Still possible to have EGI in place before the end of EGEE? → **Make progress in Catania!!!**