



European Grid Initiative



# The Life Sciences SSC

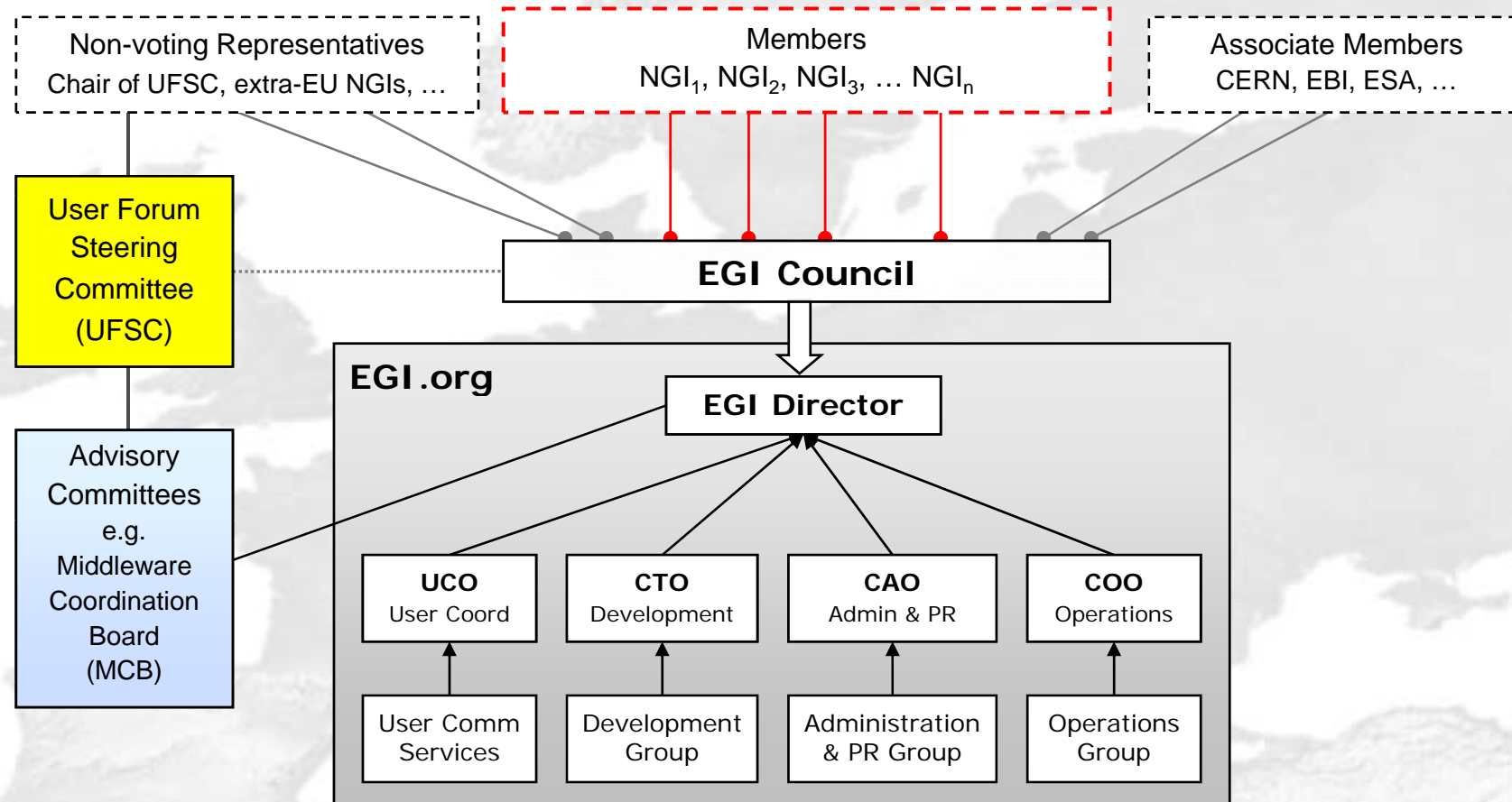
04 March 2009

EGEE User Forum – Catania, Italy

*Diana Cresti, INFN*

[dcresti@pd.infn.it](mailto:dcresti@pd.infn.it)

# The EGI Management Structure

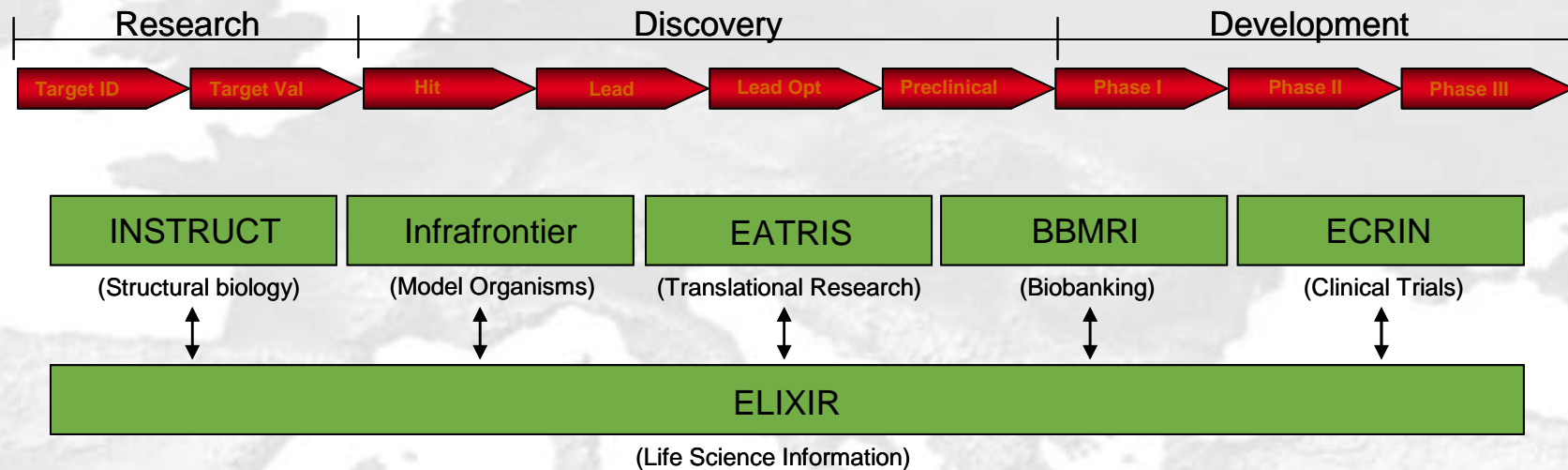


# SSC and its EGI Layer

- The Support centre for the Life Sciences communities will organise itself as best serves these communities.
- The LS SSC is self-governing; the EGI layer is only part of the SSC.
- The LS cluster and collaborating groups should write a proposal for a project to set up the LS SSC;
- The SSC itself however is not a project, but a permanent entity.
- The SSC should be a center of gravity for other projects in the Life Sciences, who can contribute to the SSC;
- The LS SSC is already being discussed with the ESFRI design studies in the field, in particular ELIXIR:

# ESFRI → ELIXIR → EGI

<b>INSTRUCT</b>	Integrated Structural Biology Infrastructure	<a href="http://www.instruct-fp7.eu">www.instruct-fp7.eu</a>
<b>Infrafrontier</b>	Infrastructure for Phenomefrontier and Archivefrontier	<a href="http://www.infrafrontier.eu">www.infrafrontier.eu</a>
<b>EATRIS</b>	The European Advanced Translational Research Infrastructure	<a href="http://www.eatris.eu/">www.eatris.eu/</a>
<b>BBMRI</b>	European Biobanking And Biomolecular Resources	<a href="http://www.biobanks.eu">www.biobanks.eu</a>
<b>ECRIN</b>	Infrastructures For Clinical Trials And Biotherapy	<a href="http://www.ecrin.org">www.ecrin.org</a>
<b>ELIXIR</b>	Upgrade Of European Bioinformatics Infrastructure	<a href="http://www.elixir-europe.org">www.elixir-europe.org</a>



*Image courtesy of Andrew Lyall (Elixir)*

# Life Sciences SSC – possible UCS Layer

- One **User Forum Representative** and member of the UFSC; if possible, this individual should have assistance by at least a part time representative for each thematic subcluster, for a total of 1.5 or 2 additional FTEs. These people also do coordination.
- One **Grid Planning Officer** to participate in the EGI MCB meetings. Possibly assisted by the VO managers (not counted here).
- 2 FTEs for **User Technical Support** and other support tasks.
- A team of 2 FTEs to design and build the **Life Sciences Gateway**.
- One web **content manager** to work with the Gateway team and other information-related tasks.
- 1 FTEs for coordination of Documentation and Training specific to the LS community.
- A team of 2 FTEs for Consulting with new communities, Application Porting Support, and to maintain and monitor the Application Database for the Life Sciences.

# Life Science SSC – possible UCS Layer

