



European Grid Initiative



The Life Sciences SSC

Discussion

EGEE User Forum – Catania, Italy

Almost all slides are borrowed to Diana Cresti, INFN

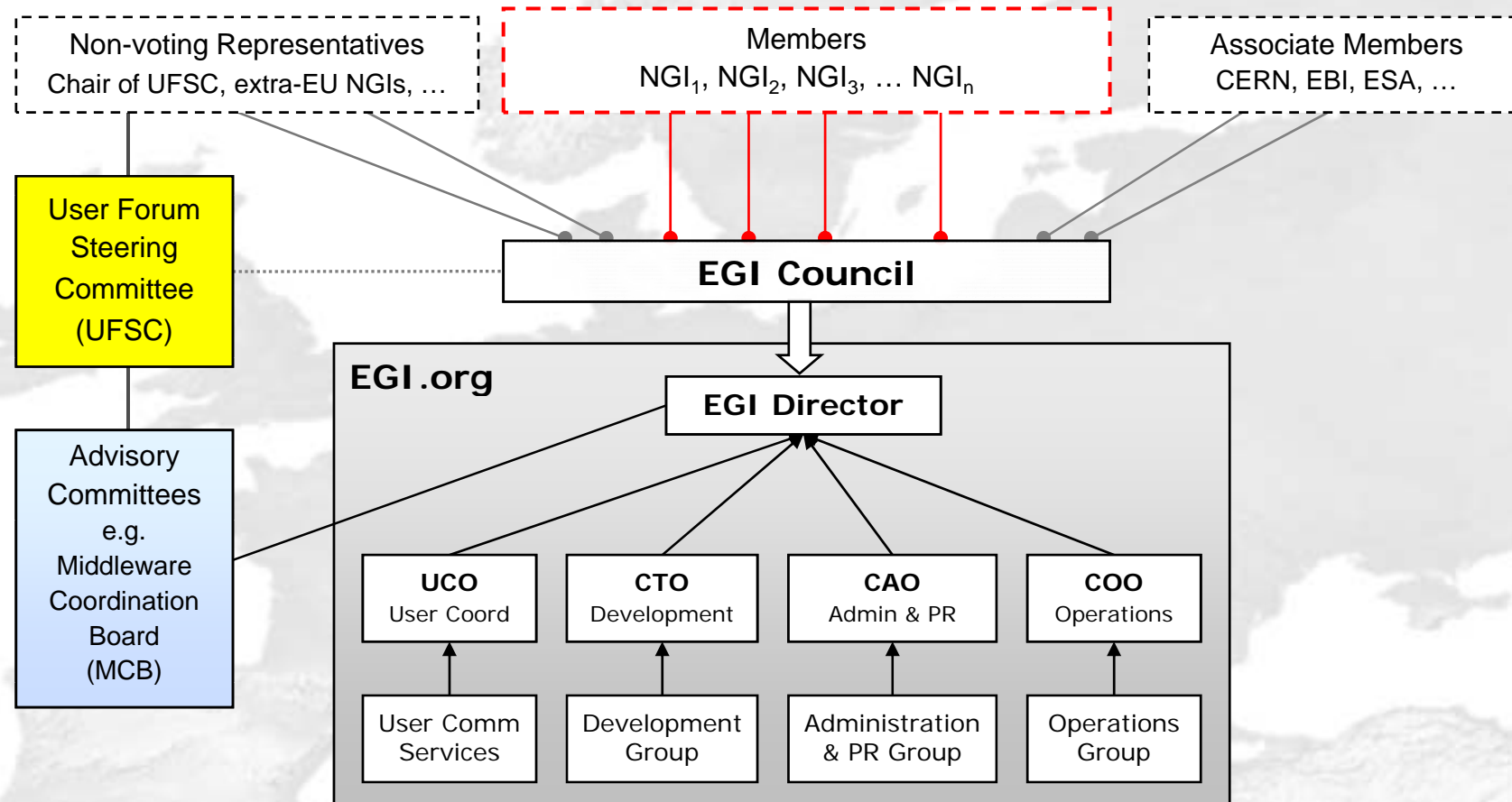
dcresti@pd.infn.it

Specialised Support Centres

- The **EGI SSCs** are established and governed by the user communities.
- **In the context of EGI, an SSC is defined as a centre (or cluster of activities) that has a formal relationship with EGI** in terms of the collaborative UCS activities described in D3.1 and D3.2
- SSCs do not require full NGI consensus to be established
- Initial SSCs to be defined during the drafting of the EGI proposal; EGI_DS and EGEE are working with the user communities to help define these entities. An example for the Life Sciences is given below.
- In the future, SSC proposals will be evaluated by the EGI Council in consultation with the User Forum Steering Committee (details t.b.d.)
- SSCs should interact closely with the central EGI.org UCS team (described in the EGI Blueprint)

See also http://knowledge.eu-egi.eu/index.php/Specialised_Support_Centres

The EGI Management Structure



SSC and its EGI Layer

- The Support centre for the Life Sciences communities will organise itself as best serves these communities.
- The LS SSC is self-governing; the EGI layer is only part of the SSC.
- The LS cluster and collaborating groups should write a proposal for a project to set up the LS SSC;
- The SSC itself however is not a project, but a permanent entity.
- The SSC should be a center of gravity for other projects in the Life Sciences, who can contribute to the SSC;
- The LS SSC is already being discussed with the ESFRI design studies in the field, in particular ELIXIR:

ESFRI → ELIXIR → EGI

INSTRUCT	Integrated Structural Biology Infrastructure	www.instruct-fp7.eu
Infrafrontier	Infrastructure for Phenomefrontier and Archivefrontier	www.infrafrontier.eu
EATRIS	The European Advanced Translational Research Infrastructure	www.eatris.eu/
BBMRI	European Biobanking And Biomolecular Resources	www.biobanks.eu
ECRIN	Infrastructures For Clinical Trials And Biotherapy	www.ecrin.org
ELIXIR	Upgrade Of European Bioinformatics Infrastructure	www.elixir-europe.org

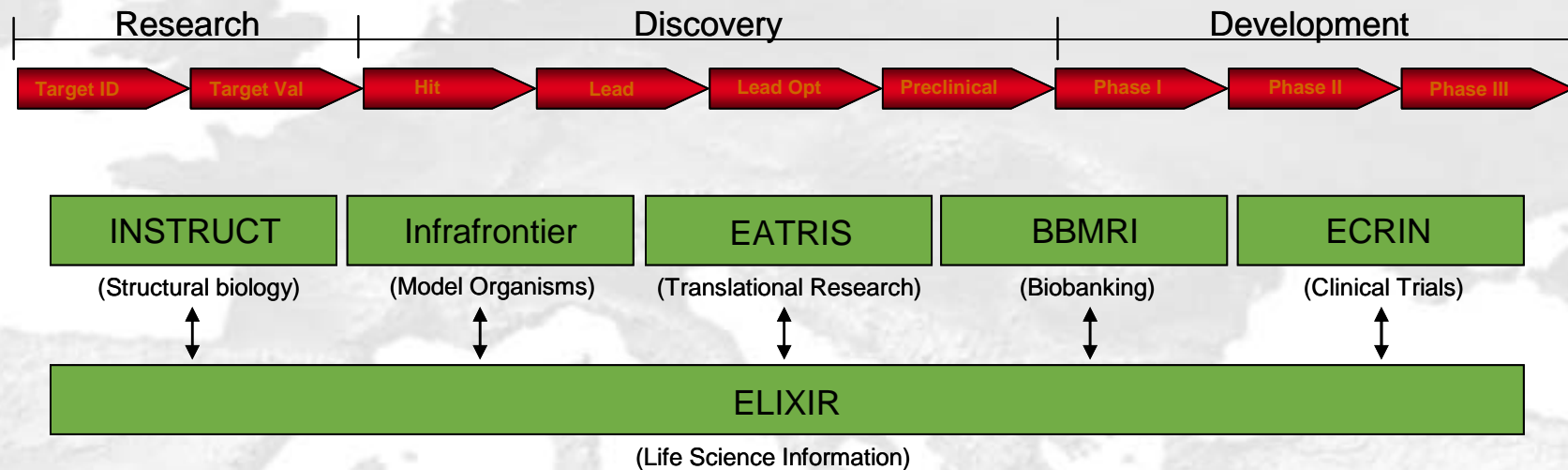
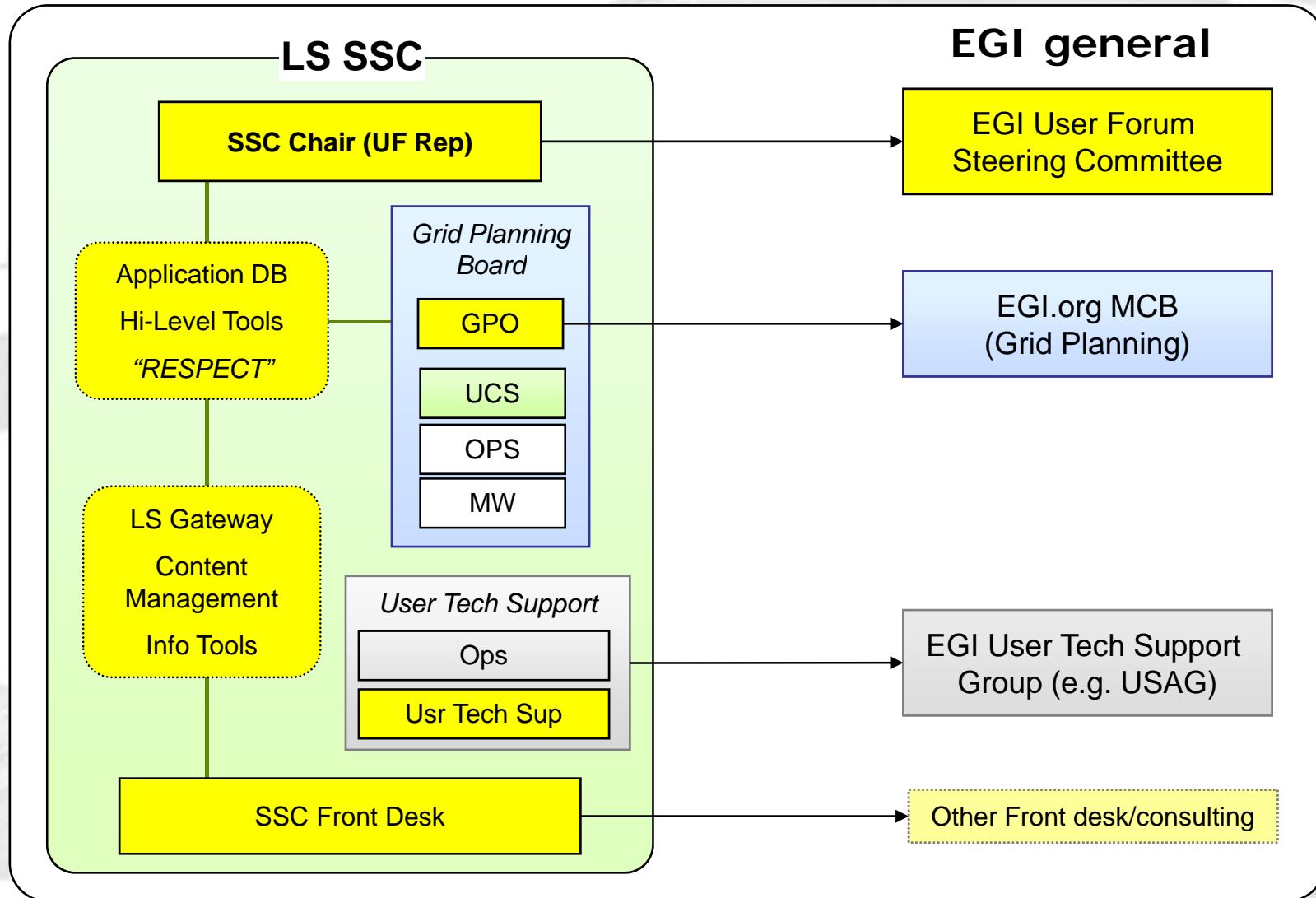


Image courtesy of Andrew Lyall (Elixir)

Life Sciences SSC – possible UCS Layer

- One **User Forum Representative** and member of the UFSC; if possible, this individual should have assistance by at least a part time representative for each thematic subcluster, for a total of 1.5 or 2 additional FTEs. These people also do coordination.
- One **Grid Planning Officer** to participate in the EGI MCB meetings. Possibly assisted by the VO managers (not counted here).
- 2 FTEs for **User Technical Support** and other support tasks.
- A team of 2 FTEs to design and build the **Life Sciences Gateway**.
- One web **content manager** to work with the Gateway team and other information-related tasks.
- 1 FTEs for coordination of Documentation and Training specific to the LS community.
- A team of 2 FTEs for Consulting with new communities, Application Porting Support, and to maintain and monitor the Application Database for the Life Sciences.

Life Science SSC – possible UCS Layer



Time scale

- June 09: list of requirements for the Biomed SSC
- October 09: list of requirements for the Life Science SSC portal and Science Gateways
- December 09: first implementation of the Life Science SSC portal
- February 2010: first implementation of the Life Science SSC scientific gateway
- April 2010: migration of Life Sciences cluster services to Life Sciences SSC

Next steps

- Identify official contact points for the different NGIs
 - Contact with NGI directors
- Meeting at HealthGrid conference
 - HealthGrid conference June 28-30 in Berlin
 - Excellent opportunity to brain storm in a “neutral” environment
 - Proposal: organize a workshop to consult the community
- Start the EGEE-> EGI transition on LS cluster budget