

NA4 Biomed Applications

Athens meeting, April 20, 2005

Johan Montagnat

14:30 Biomed status (J. Montagnat)

15:00 Deploying a workflow on EGEE (T. Glatard)

15:20 P-GRADE portal to support workflow-oriented grid applications (P. Kacsuk)

15:40 GEANT4 tool for biomedical applications (P. Mendez Lorenzo)

16:00 Break

16:30 Applications report (applications developers)

17:00 gLite testing coordination

17:10 User support management

17:20 VOMS deployment status (Y. Legré, I. Blanquer)

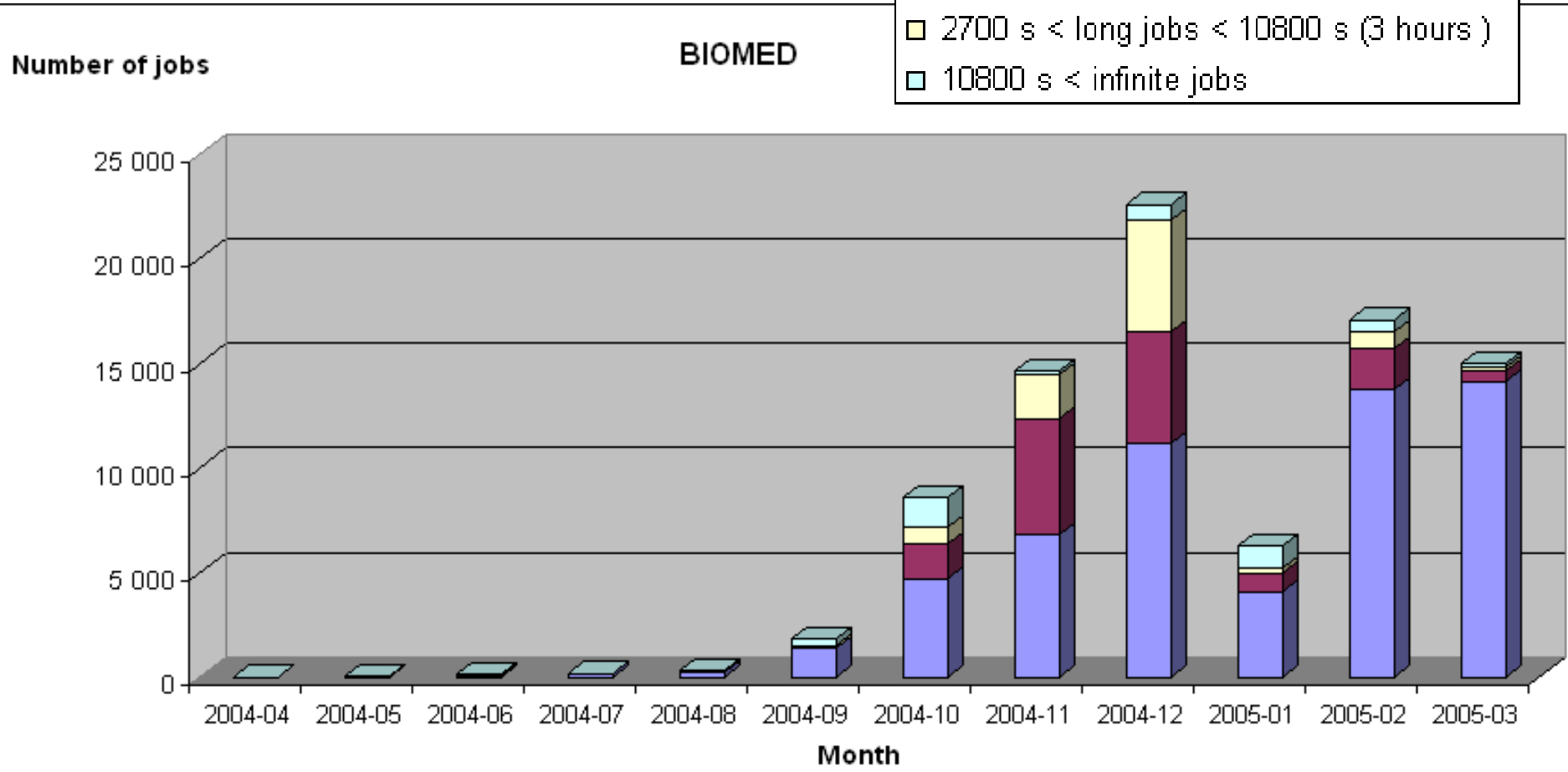
17:35 gLite data management testing (C. Pera, A. Llorens)

17:50 Conclusions and AoB

- **GATE:** Geant4 Application for Tomographic Emission (LPC)
- **Docking platform for tropical diseases:** grid-enabled docking platform for in silico drug discovery (LPC)
- **CDSS:** Clinical Decision Support System (UPV)
- **GPS@:** Grid genomic web portal (IBCP)
- **SiMRI 3D:** Magnetic Resonance Image simulator (CREATIS)
- **gPTM 3D:** Interactive radiological image visualization and processing tool (LRI)
- **xmipp_ML_refine:** Macromolecular 3D structure analysis (CNB)
- **xmipp_multiple_CTFs :** Electronmicroscopic images CTF calculation (CNB)
- **GridGRAMM:** Molecular Docking web (CNB)
- **GROCK:** Mass screenings of molecular interaction (CNB)
- **Mammogrid:** Mammograms analysis (EU project)
- **SPLATCHE:** Genome evolution modeling (U. Berne/WHO)

- **SPLATCHE**
 - first application being migrated from GILDA to biomed VO
- **Pharmacokinetics in MRI (UPV)**
 - MRI registration for contrast agent diffusion study
- **Some progress on biological sequences analysis (M. Lexa)**
- ...

- **JRA2 statistics**
 - ~15Kjobs per month

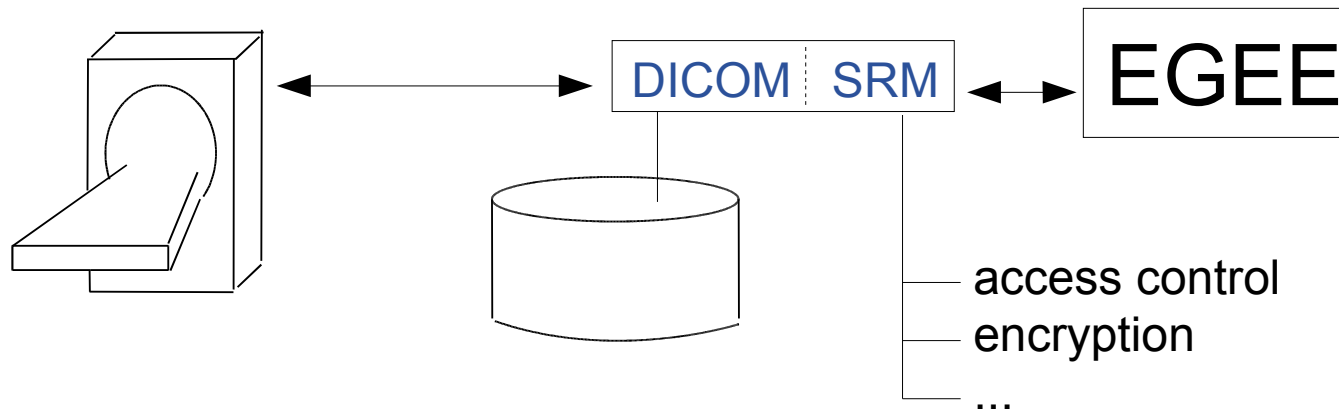


- **Focus on demonstration of grid interest for applications**
 - Contact taken with the decryphon project
 - Nicolas Jacq proposal for a data challenge organisation
 - **Focus on scientific content of applications**
- **A data challenge in biomed this summer**

	Done	—————▶	Challenge
Number of targets	1	1	5
Number of drug candidates	10^5	10^6	$3.3 \cdot 10^6$
Total CPU time	188 days	5 years?	80 years?
Gain of time	149	?	?

- **Need for input for response to EU review**
 - JRA2 statistics
 - Application gains

- **gLite**
 - Lot of testing activity inside biomed
 - Release 1.0 available
 - pre-production service expected to bring much more robustness
- **Tutorial from ARDA experts**
 - to be organized end of May
 - in Lyon?
 - in conjunction with next biomed meeting?
- **Non-application specific work initiated in the biomed activity**
 - Workflows
 - DICOM-SRM interface



- **Direct Grid access to medical servers**
- **Developed at LAL (Daniel Jouvenot, Cal Loomis...)**
- **DICOM/SRM interface**
 - prototype including basic functionalities being finalized
 - on top of existing SRM implementation (dCache)/DCMTK (DICOM Toolkit)
 - Many functionalities still to be implemented

•

- **gLite testing activities within biomed**
 - gLite installation:
 - VOMS (Yannick)
 - Most services (Ignacio)
 - gLite usage:
 - Generic testing (Adelyne)
 - Data (Antoine) and metadata (Christophe P.) management
 - application porting
 - CDSS (Ignacio)
- **...and beyond (see Tuesday's talk from Massimo)**
 - ARDA (ARDA workshops as a source of information)
 - NA4 test team
 - JRA1 and SA1 testing
 - ...
- **Pre-production service announced (in early may?)**

- **Checklist**

- documentation known by testers
 - lot of documentation released recently -> **Comments welcome!**
 - may be scattered
- other testing activities known
 - refer to Massimo's talk
- features to test understood
- efficient testing procedure
 - I need feedback
 - Testing may involve periodical checks, etc
- feedback channels known

- **Future of biomed testing**

- new functionalities, specific services
- scale and performance testing
- from testing to application porting

- **Experts and GGUS ticket flow**

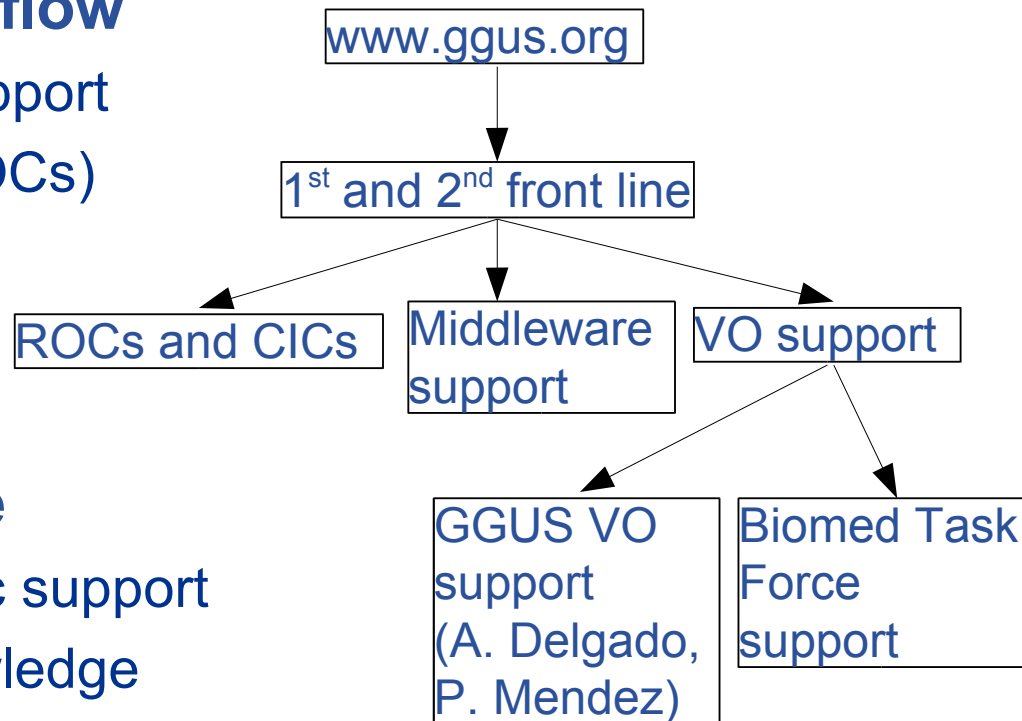
- First and second line of support
- Site problems (CIC and ROCs)
- Generic problems
- VO support
- Middleware developers

- **Role of biomed task force**

- Provide application-specific support
- Participate to the grid knowledge acquisition of biomed users

- **Current organization**

- Tickets sent to technical team mailing list and assigned to 'biomed VO'
- Christophe Pera to assign messages to experts
- Use the GGUS portal to follow on tickets



- **We have to learn**
 - Biomed experts to register as 'ticket administrators' and learn the GGUS ticket management tool
 - Christophe to identify the correct targets
 - People to whom tickets are assigned to should be reactive
 - Need for a rollback procedure (expect redirection errors at least in the first phasis)
 - Need to check that all tickets are followed on

•

- **Catch up with the growing rate of the biomedical community**
 - Organise gLite knowledge acquisition and testing
 - Organise biomed user support
- **Focus on scientific results and demonstration of the benefit of the grid**
 - Need for quantitative numbers on biomed applications activity (**this week!**)
- **Important milestones**
 - data challenge
 - gLite migrations
- **gLite tutorial to be organised in may**
- **Aob?**