

Subject: **QUALITY INDICATORS**

Author(s): **G. Zaquine**

Distribution: **WP Managers**

1. INTRODUCTION

This document is a first draft with the aim to define quality indicators (QuI) for the DataGrid project.

QuI constitute overview control indicators for the project and will be followed during the whole project and updated monthly. Other detailed indicators and statistics will be produced as part of the monitoring functionality of the project and are not described in this document.

We will distinguish two types of quality indicators. The first set corresponds to the development phase, as the second set corresponds to the production phase.

For each indicator we will propose a WP responsible for producing it. The project Office will centralise and publish them monthly.

In section 4, we propose a template for results presentation.

2. QuI FOR THE DEVELOPMENT PHASE

For the development phase, the following main classes of QuI will be analysed:

- Release Plan control indicators
- Deliverable reports control indicators

2.1. RELEASE PLAN CONTROL INDICATORS

These indicators will concern middleware WPs (1,2,3,4,5,7) and will be produced for each WP, except for point 3 that concern application WPs (8,9,10):

1. Development timing: Delivery for integration time against planned time
2. Integration timing: Time spent against planned time
3. Validation timing: Time spent against planned time
4. Coverage rate of planned requirements defined in the release plan for steps 1,2,3: Number of planned requirements against delivered coverage requirements for step 1, and successfully tested for points 2 and 3. WPs will provide the list of delivered features and associated status (done, not done) as expected in the release plan.

These indicators will be produced by WP6.

2.2. DELIVERABLE REPORTS CONTROL INDICATORS

These indicators will concern all WPs and will be produced for each WP:

- Number of PTB cycles for approving a deliverable.
- Rate of deliverables delivered in time for EU review
- Rate of approved deliverables by EU

These indicators will be produced by WP12.

3. QuI FOR THE PRODUCTION PHASE

For the production phase, the following main classes of QuI will be analysed:

- Anomalies evolution
- Testbeds operability

3.1. ANOMALIES EVOLUTION DURING THE PRODUCTION PHASE

These indicators will concern middleware WPs (1,2,3,4,5,7) and will be produced for each WP:

- Number of new anomalies. Users should fill the release version field in Bugzilla in order to distinguish anomalies during integration and anomalies during the production phase.
- Medium time for anomalies resolution
- Number of pending anomalies

These indicators will be produced by WP6 (Automated queries to Bugzilla).

3.2. TESTBEDS OPERABILITY

These indicators will concern the main testbeds in production:

- Number of sites in production
- Number of processors
- Number of declared users and active users
- Availability testbeds rate. This indicator is the ratio between successful jobs and failed jobs. This indicator will be produced for each site.

These indicators will be produced by WP3/WP1.

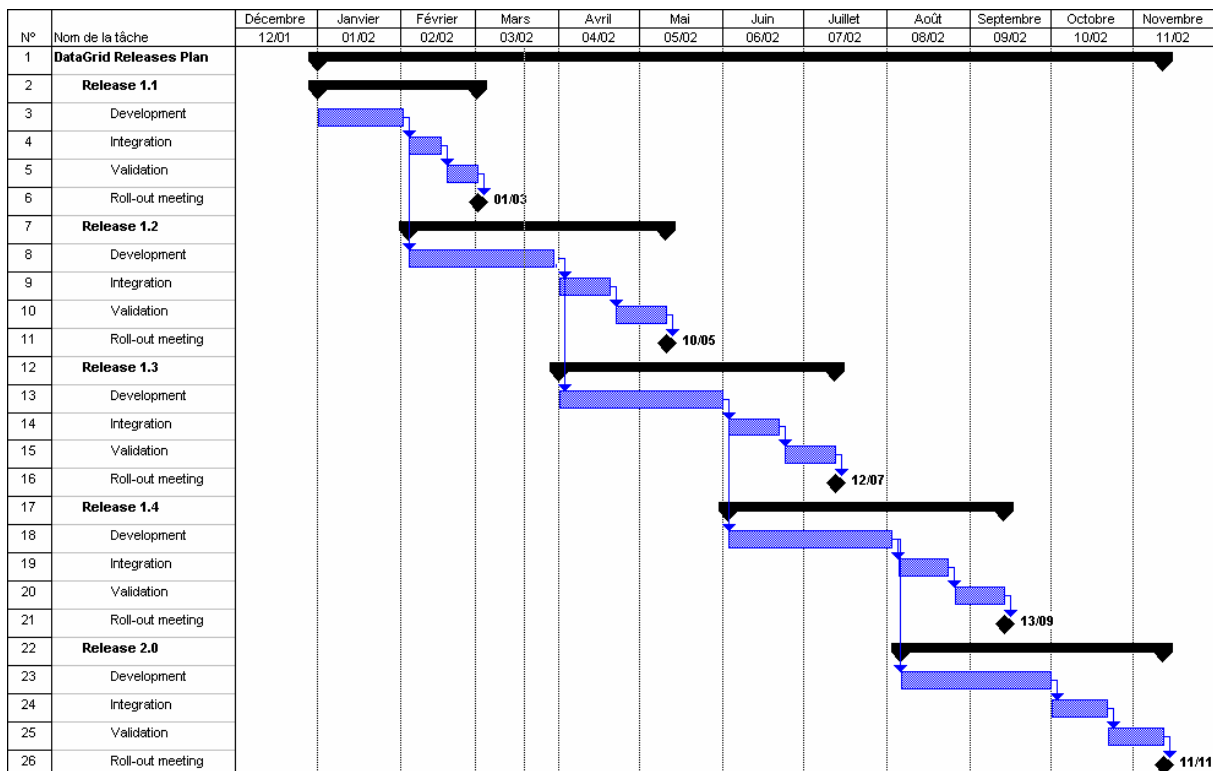
4. TEMPLATE FOR RESULTS PRESENTATION

4.1. DEVELOPMENT PHASE Qui

4.1.1. Release timing

Release timing		Release 1.1	Release 1.2	Release 1.3	Release 1.4	Release 2.0
Development	Planned delivery date	31/01/02	31/03/02	31/05/02	31/07/02	30/09/02
	WP1 delivery date					
	WP2 delivery date					
	WP3 delivery date					
	WP4 delivery date					
	WP5 delivery date					
	WP7 delivery date					
Integration	Planned time					
	Time spent					
Validation	Planned time					
	Time spent					

The following graph will be produced monthly.



4.1.2. Release coverage functionalities

Release x.y		WP1	WP2	WP3	WP4	WP5	WP7
Development	Planned/Delivered	100%					
Integration	Planned/Successful tests	100%					
Validation	Planned/Successful tests	100%					

4.1.3. Deliverables reports control indicators

Deliverables reports control indicators	Year 1	Year 2	Year 3
Number of planned deliverables	41 (including 5 PPR)	21 (including 5 PPR)	26 (including 5 PPR)
Average number of PTB cycles for approving a deliverable	1,5		
Rate of deliverables delivered in time for EU review	100%		
Rate of approved deliverables by EU	100%		

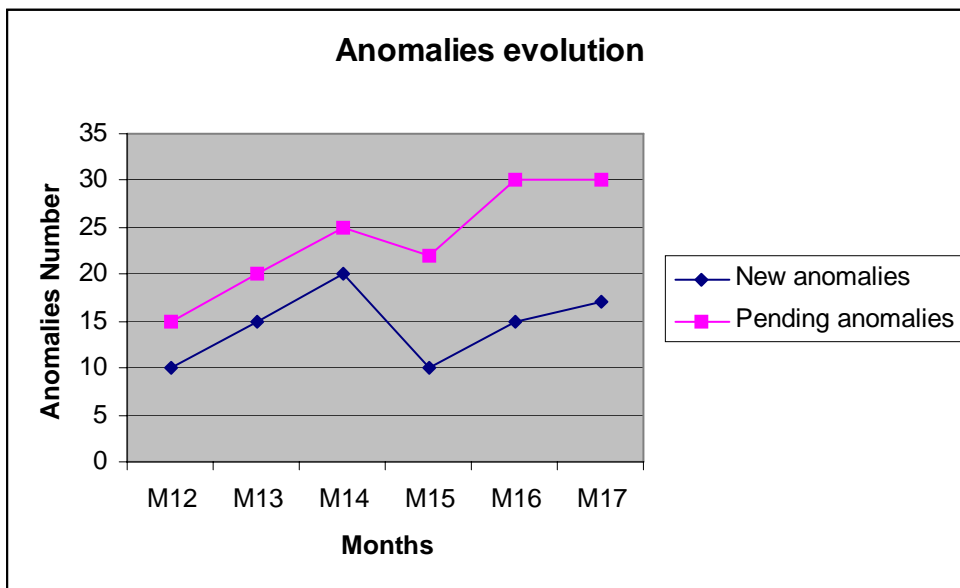
PPR =quarterly and annual reports

5. PRODUCTION PHASE Qui

5.1.1. Anomalies evolution during the production phase

Month 15	WP1	WP2	WP3	WP4	WP5	WP6	WP7
Numbers of new anomalies							
Number of pending anomalies							
Medium time for anomalies resolution [day]							

The following graph will be produced monthly.



5.1.2. Testbeds operability

	M12	M13	M14	M15	M16	M17		
Number of sites in production									
Total processors number									
Total users declared									
Users active/declared									
Total Jobs submitted									
Jobs failed/Successful									
Detail by site									
Site 1									
Site 2									
.....									
Site n									

The following graph will be produced monthly.

