



The EDG Testbed



The European DataGrid Project Team (UFFICIALI)

<http://www.eu-datagrid.org>

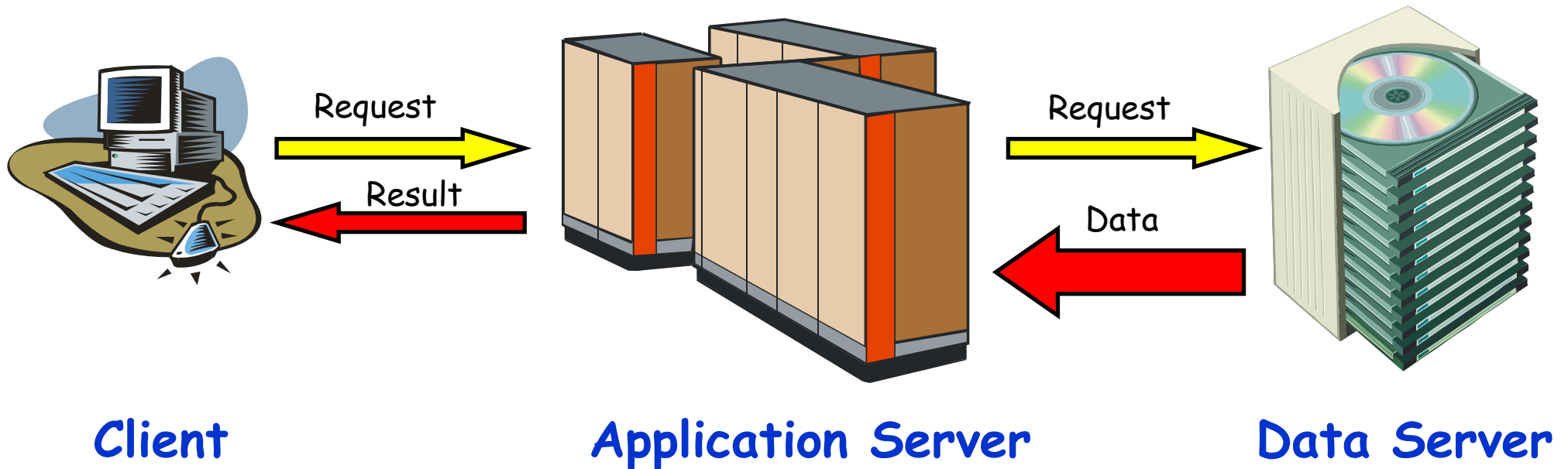


Contents

- ◆ User's Perspective of the Grid
- ◆ Grid Services



A 3 Tier Architecture



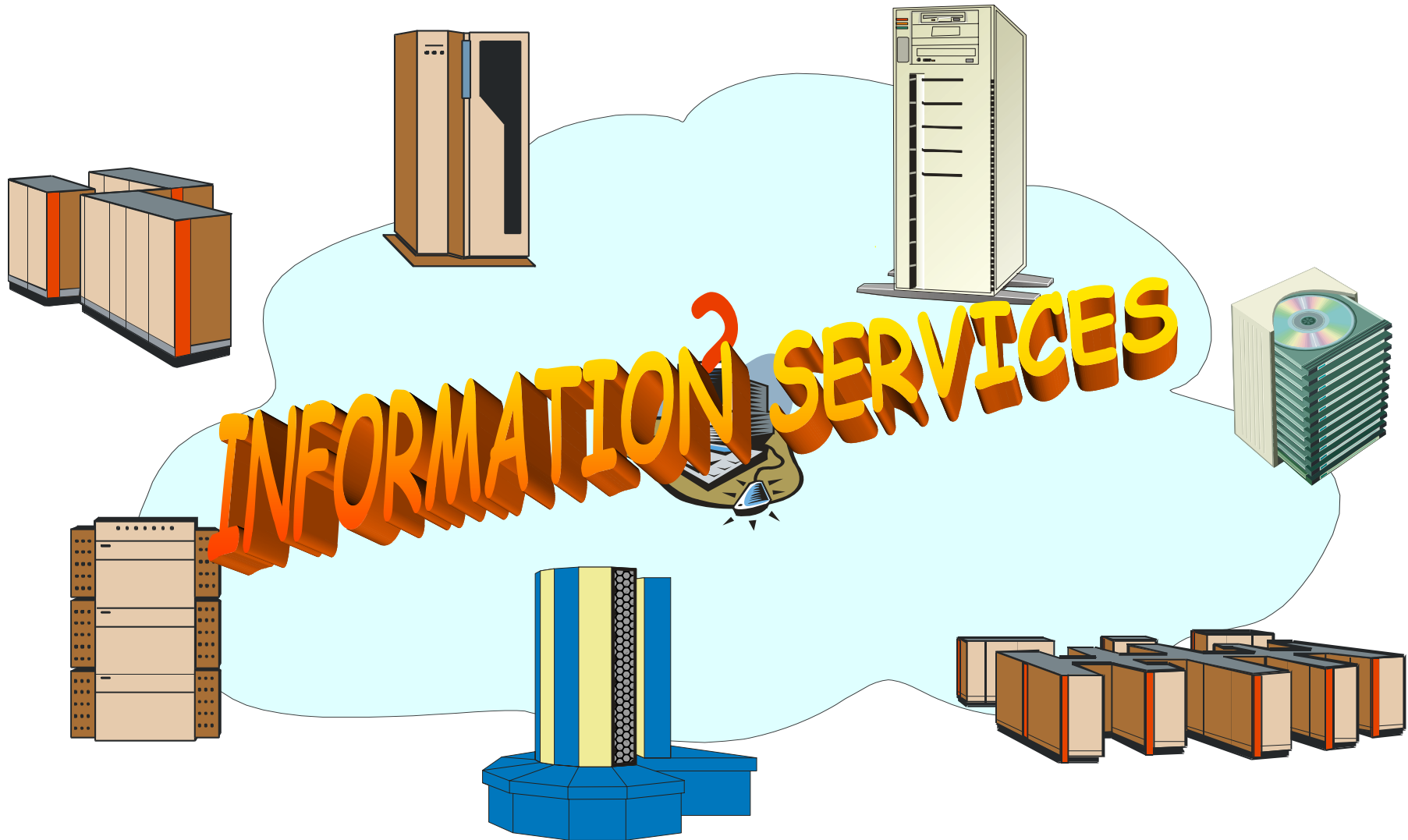
On the EDG:

User Interface

**Computing Element/
Worker Nodes**

Storage Element

Situation on a Grid





Information Services

- ◆ Hardware:

- EDG Information Service
- Information Providers

- ◆ Data:

- Replica Catalog

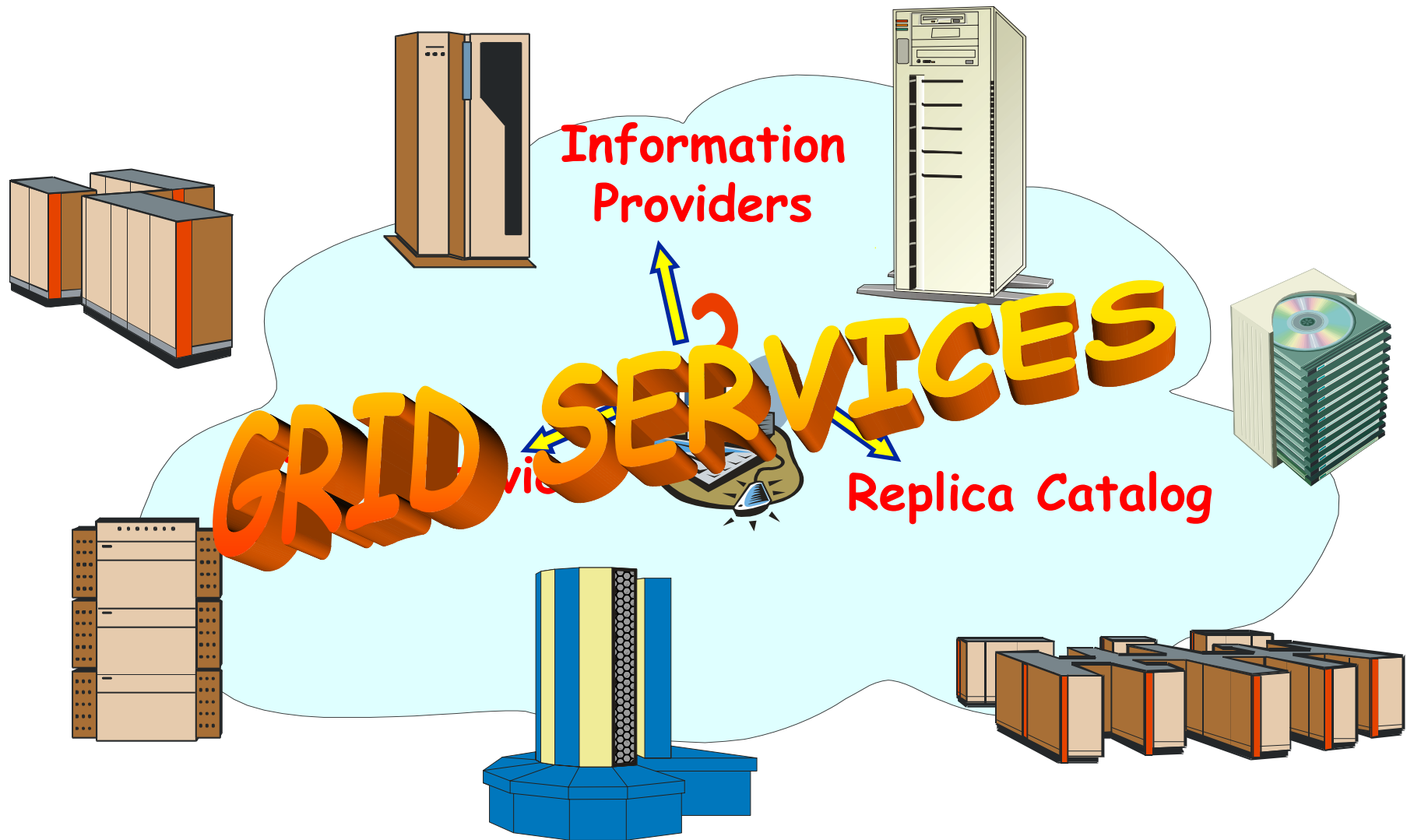
- ◆ Software & Services:

- EDG Grid Services:
 - Information Service
- Application Services:
 - Currently only EDG applications directly supported

Machine Types:

- ◆ Information Service (IS)
- ◆ Replica Catalog (RC)

Situation on a Grid Cont'd



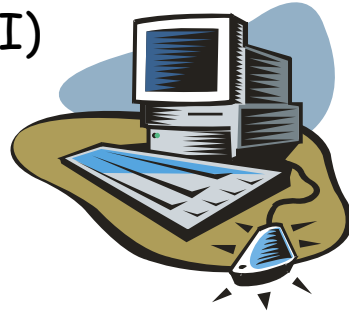


Main EDG Grid Services

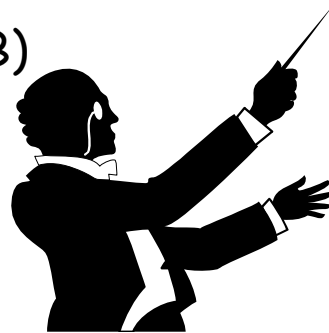
- ◆ Authentication & Authorization
- ◆ Workload Management System (WMS)
 - Resource Broker (RB)
- ◆ Replica Management
 - Composed by two packages
 1. Grid Data Mirroring Package (GDMP)
 2. edg-replica-manager (an improvement of the Globus Replica Manager)
 - Supports mass storage system
- ◆ Logging & Bookkeeping (LB)

EDG Logical Machine Types

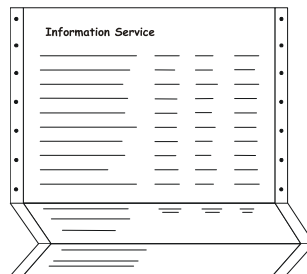
1. User Interface (UI)



2. Resource Broker (RB)

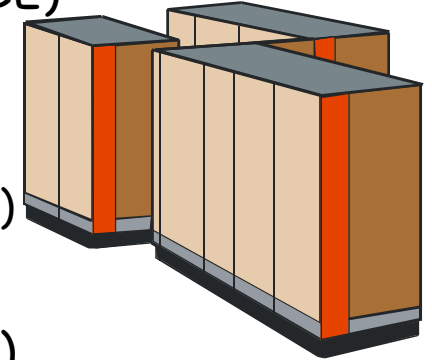


3. Information Service (IS)

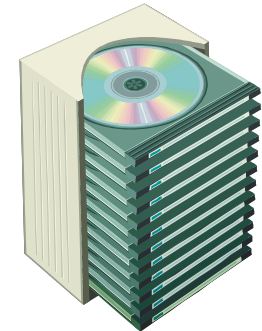


4. Computing Element (CE)

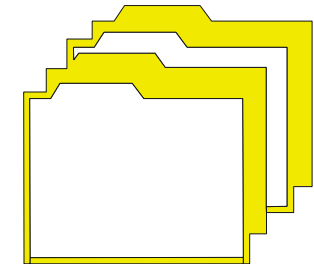
- Gatekeeper (Front-end Node)
- Worker Nodes (WN)



5. Storage Element (SE)



6. Replica Catalog (RC)





Further Information

- ◆ EDG Testbed homepage:

<http://marianne.in2p3.fr>