



# The EDG Testbed



The European DataGrid Project Team (UFFICIALI)

<http://www.eu-datagrid.org>

---

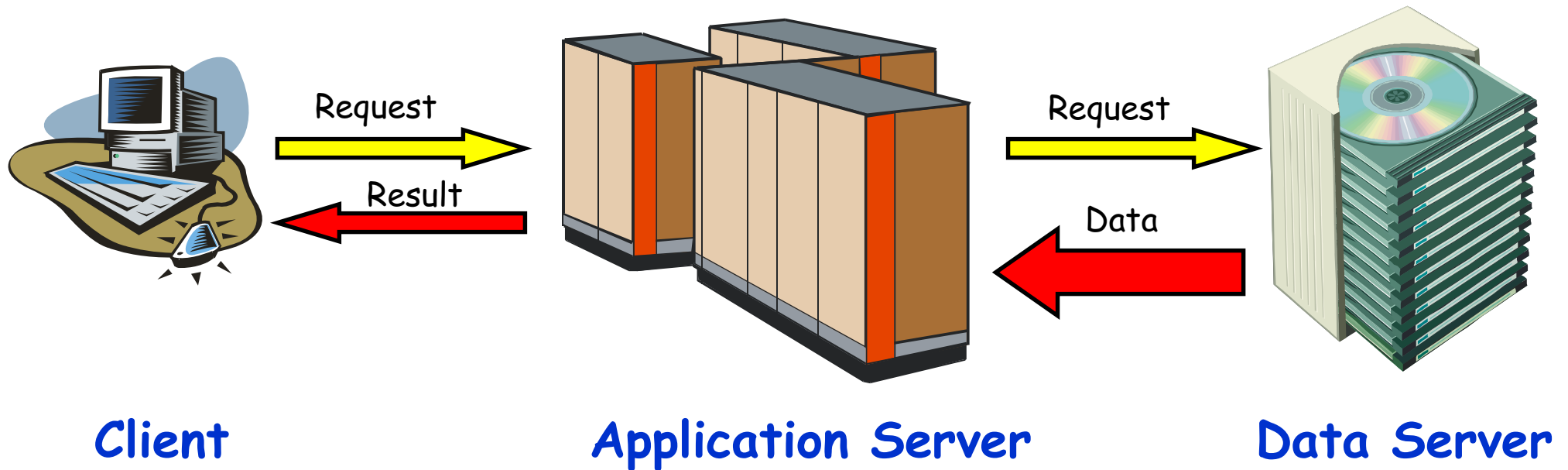


# Contents

- ◆ User's Perspective of the Grid
- ◆ Grid Services



# A 3 Tier Architecture



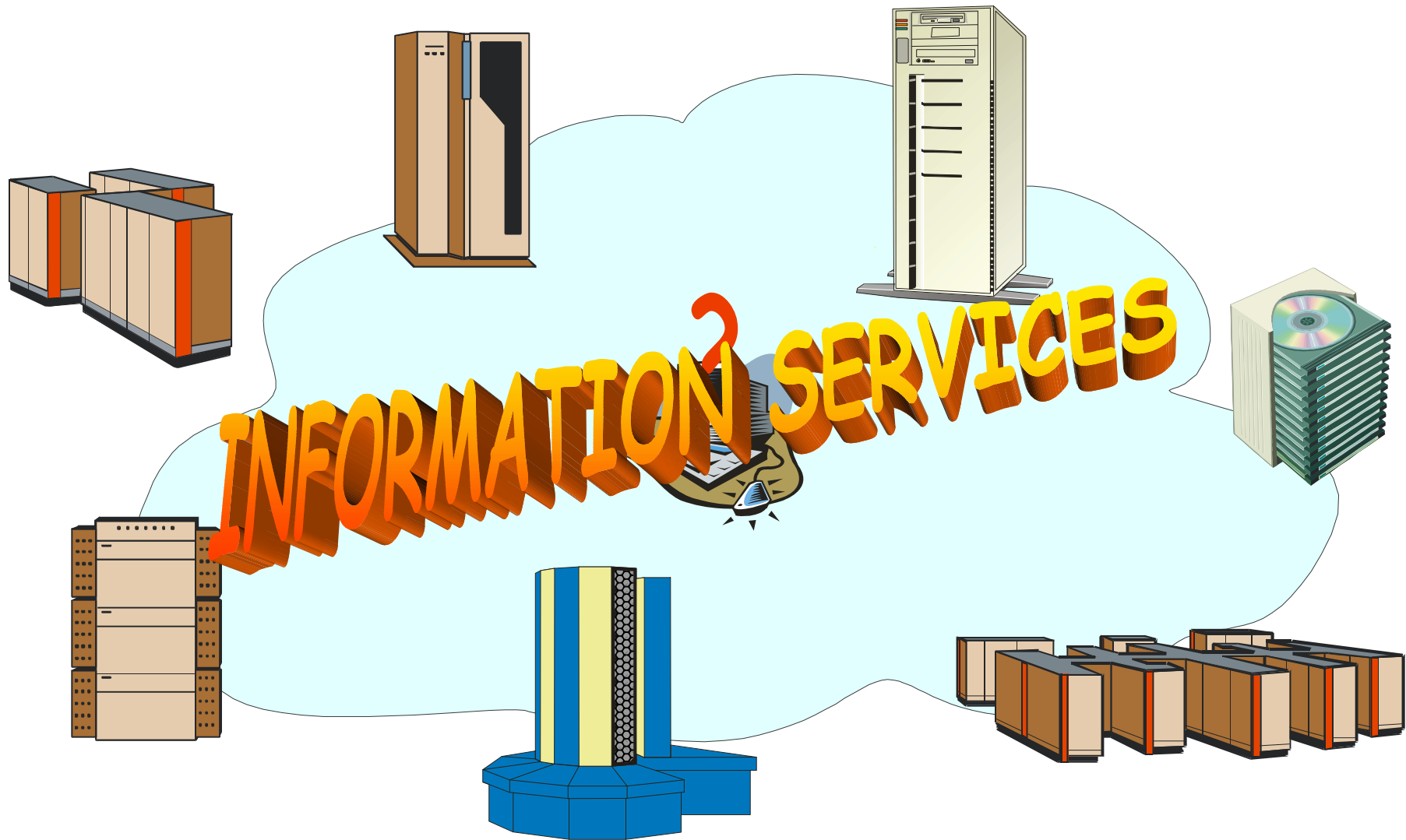
## On the EDG:

**User Interface**

**Computing Element/  
Worker Nodes**

**Storage Element**

# Situation on a Grid





# Information Services

- ◆ Hardware:

- EDG Information Service
- Information Providers

- ◆ Data:

- Replica Catalog

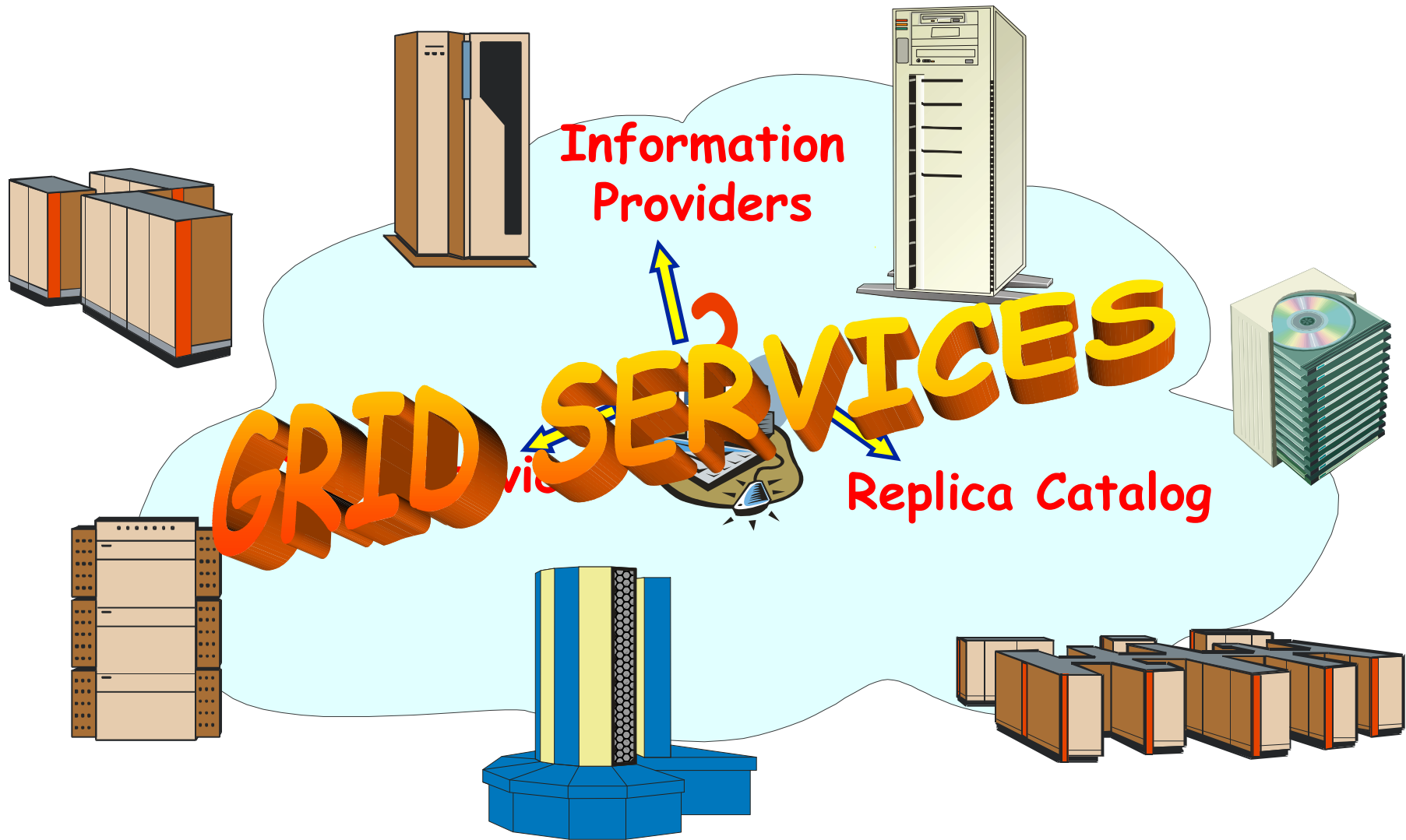
- ◆ Software & Services:

- EDG Grid Services:
  - Information Service
- Application Services:
  - Currently only EDG applications directly supported

## Machine Types:

- ◆ Information Service (IS)
- ◆ Replica Catalog (RC)

# Situation on a Grid Cont'd



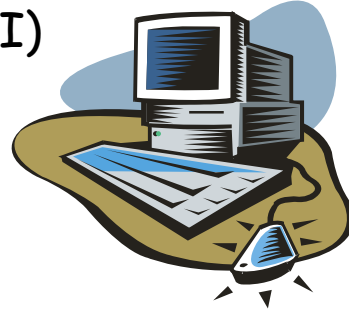


# Main EDG Grid Services

- ◆ Authentication & Authorization
- ◆ Workload Management System (WMS)
  - Resource Broker (RB)
- ◆ Replica Management
  - Composed by two packages
    1. Grid Data Mirroring Package (GDMP)
    2. edg-replica-manager (an improvement of the Globus Replica Manager)
  - Supports mass storage system
- ◆ Logging & Bookkeeping (LB)

# EDG Logical Machine Types

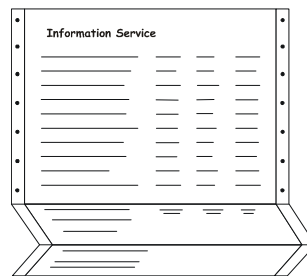
## 1. User Interface (UI)



## 2. Resource Broker (RB)

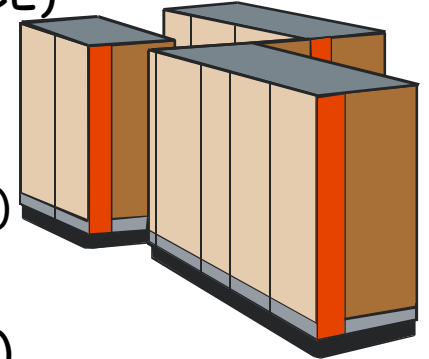


## 3. Information Service (IS)

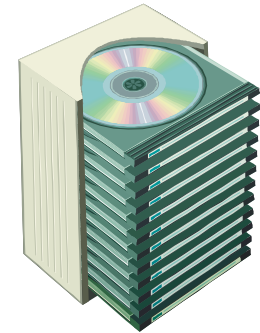


## 4. Computing Element (CE)

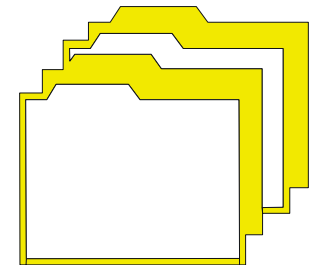
- Gatekeeper (Front-end Node)
- Worker Nodes (WN)



## 5. Storage Element (SE)



## 6. Replica Catalog (RC)







# Further Information

- ◆ EDG Testbed homepage:

<http://marianne.in2p3.fr>