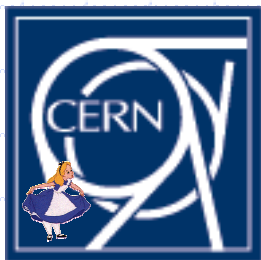


GRID Deployment Session

Summary, F.Carminati CERN

LCG Launching Workshop

February 15, 2002



Agenda

14:00 Agenda and Scope F.Carminati (CERN)

14:20 GRID deployment M.Mazzucato (INFN)

14:50 Presentation from funding agencies / countries

Holland, M.Mazzucato (on behalf of K.Bos, NIKHEF)

Germany, M.Kunze (Karlsruhe)

IN2P3, D.Linglin (Lyon)

INFN-Italy, F.Ruggieri (CNAF-INFN)

Japan, I.Ueda (Tokyo)

Northern European Countries, O.Smirnova on behalf of J.Renner
Hansen (NBI DK)

16:00 Coffee Break

Russia, V.A.Ilyin (SINP MSU Moscow)

UK, J.Gordon (RAL)

US-ATLAS, R.Baker (BNL)

US-CMS, L.Bauerdick (FNAL)

US-ALICE, B.Nilsen (OSU)

Spain, M.Delfino

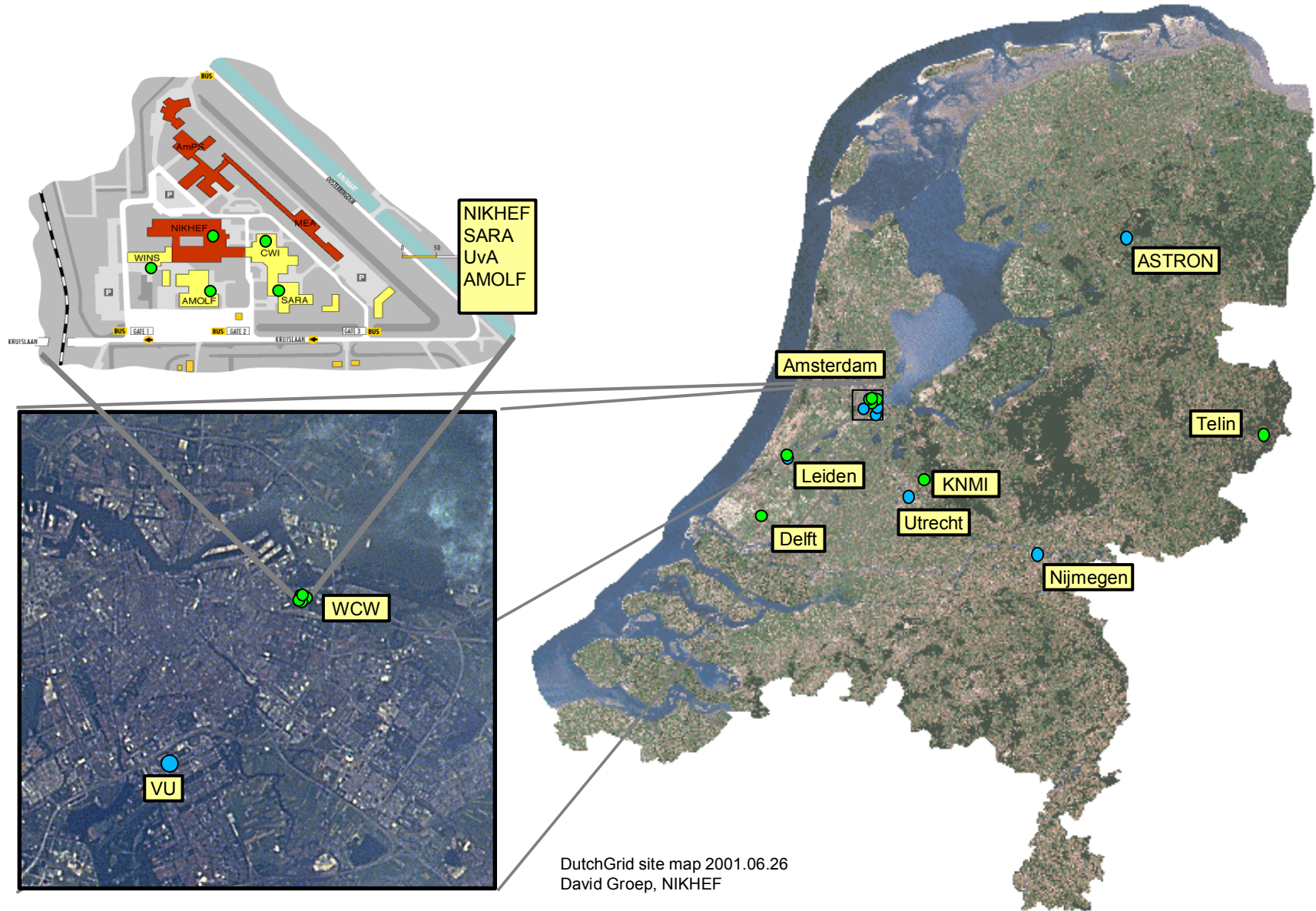
16:20 Proposal for Coordination Mechanisms L.Robertson

16:50 Discussion

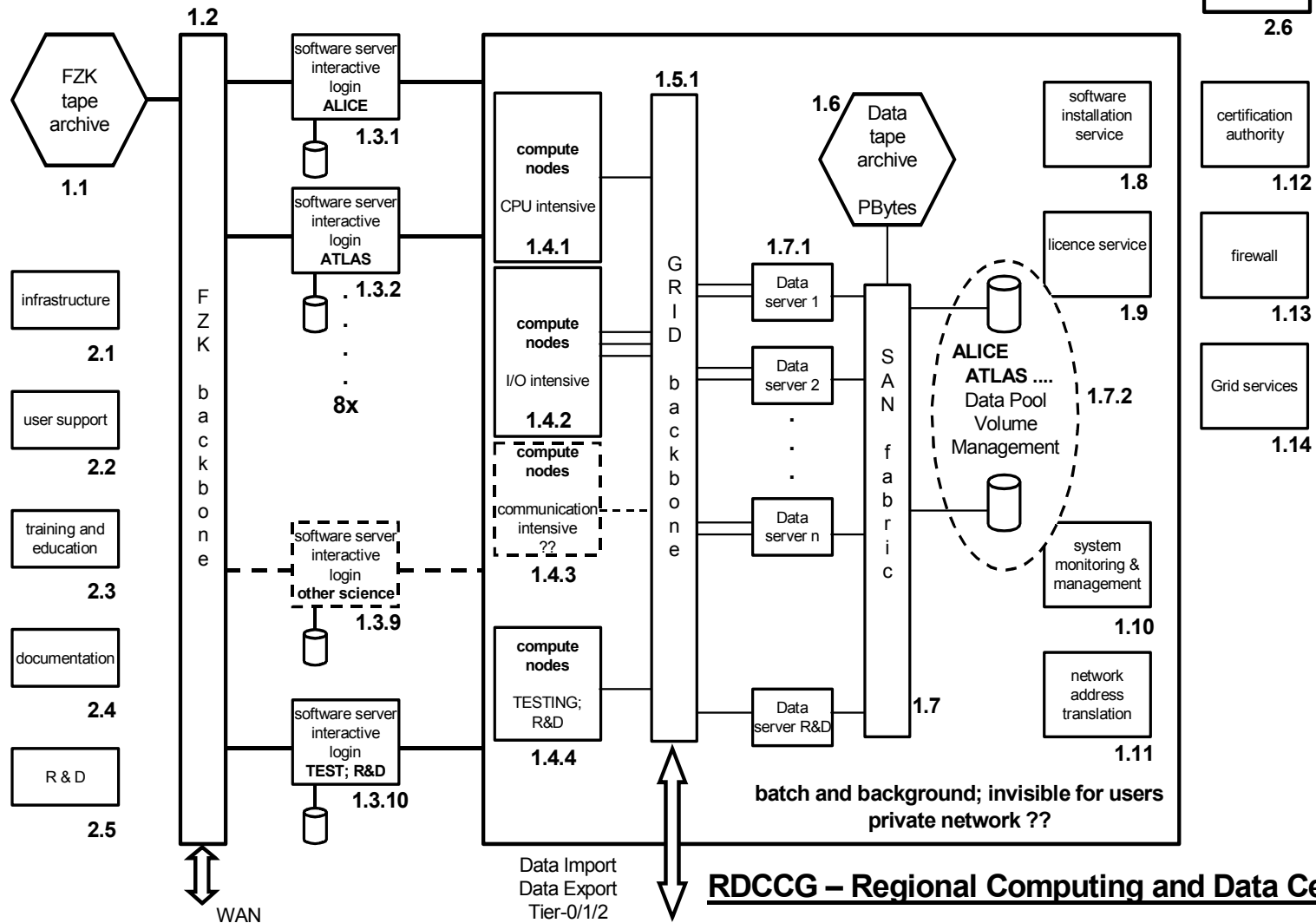




DutchGrid Overview



Grid-Computing Infrastructure & Services (GIS, H.Marten)



RDCCG – Regional Computing and Data Center Germany

CC-IN2P3

Le Centre de Calcul

ONE computing centre for
IN2P3-CNRS & DSM-CEA
(HEP, Astropart., NP,..)

National : 18 laboratories,
40 experiments,
2500 people/users

International : Tier-1 / Tier-A
status for several US, CERN
and astrop. experiments

45 people



0,5 PBytes
Data Bases,
Hierarchical storage



~ 700 cpu's, 20 k SI-95
40 TB disk



Network & QoS.
Custom services "à la carte"

Budget:

~ 6-7 M €/year

Plus ~ 2 M € for personnel





TIER1 Resources

HARDWARE

<i>Year</i>	<i>FARM (SI2000)</i>	<i>DISKS (TB)</i>	<i>TAPES (TB)</i>
2001	60,000	10	10
2002	200,000	80	50
2003	900,000	120	300
2004	1,550,000	192	600
2005	3,100,000	380	2,000
2006	4,000,000	480	3,000

Tier2 will have almost the same amount of CPU & Disks



SuperSINET

