



Computer and Automation Research Institute
Hungarian Academy of Sciences



Nice GUIs

Norbert Podhorszki

<pnorbert@sztaki.hu>

Laboratory of Parallel and Distributed Systems

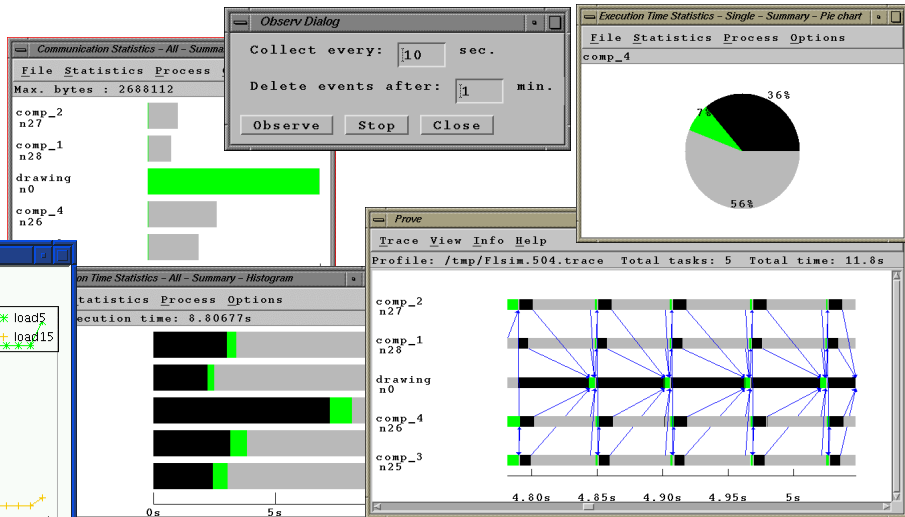
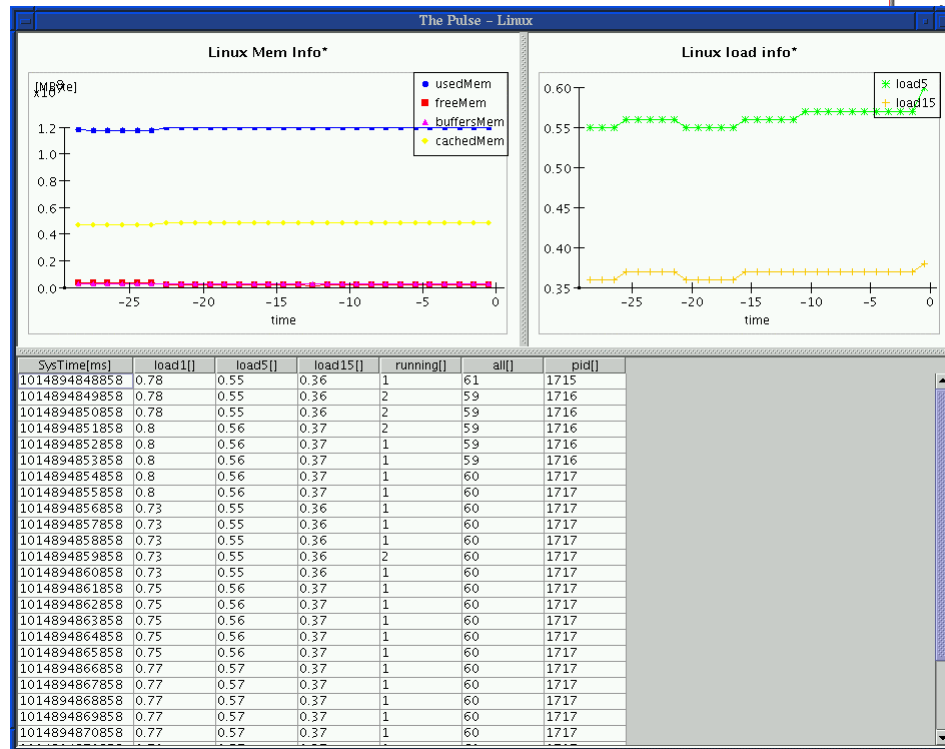
MTA SZTAKI

www.lpds.sztaki.hu



Contents

GRM and PROVE

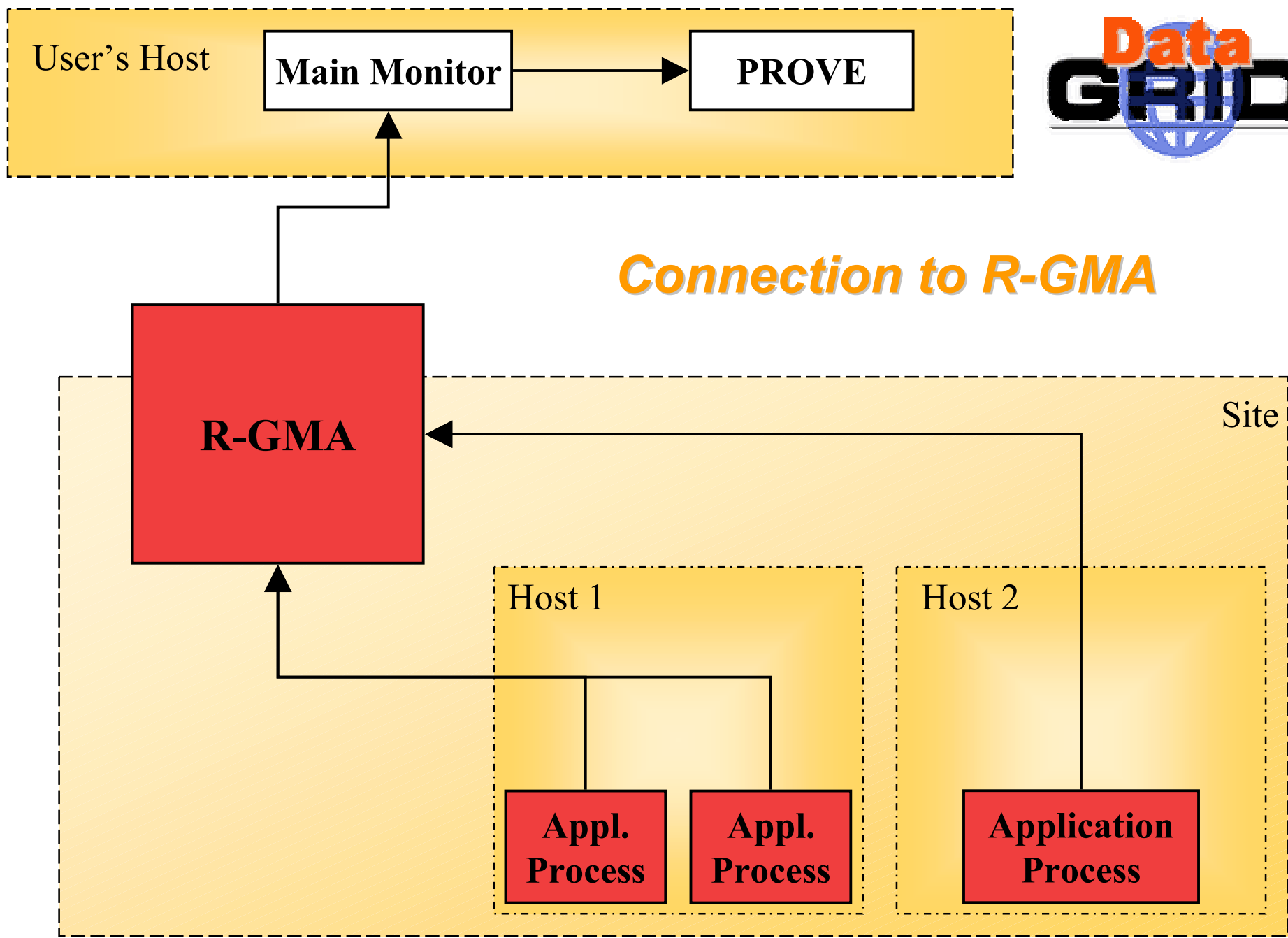


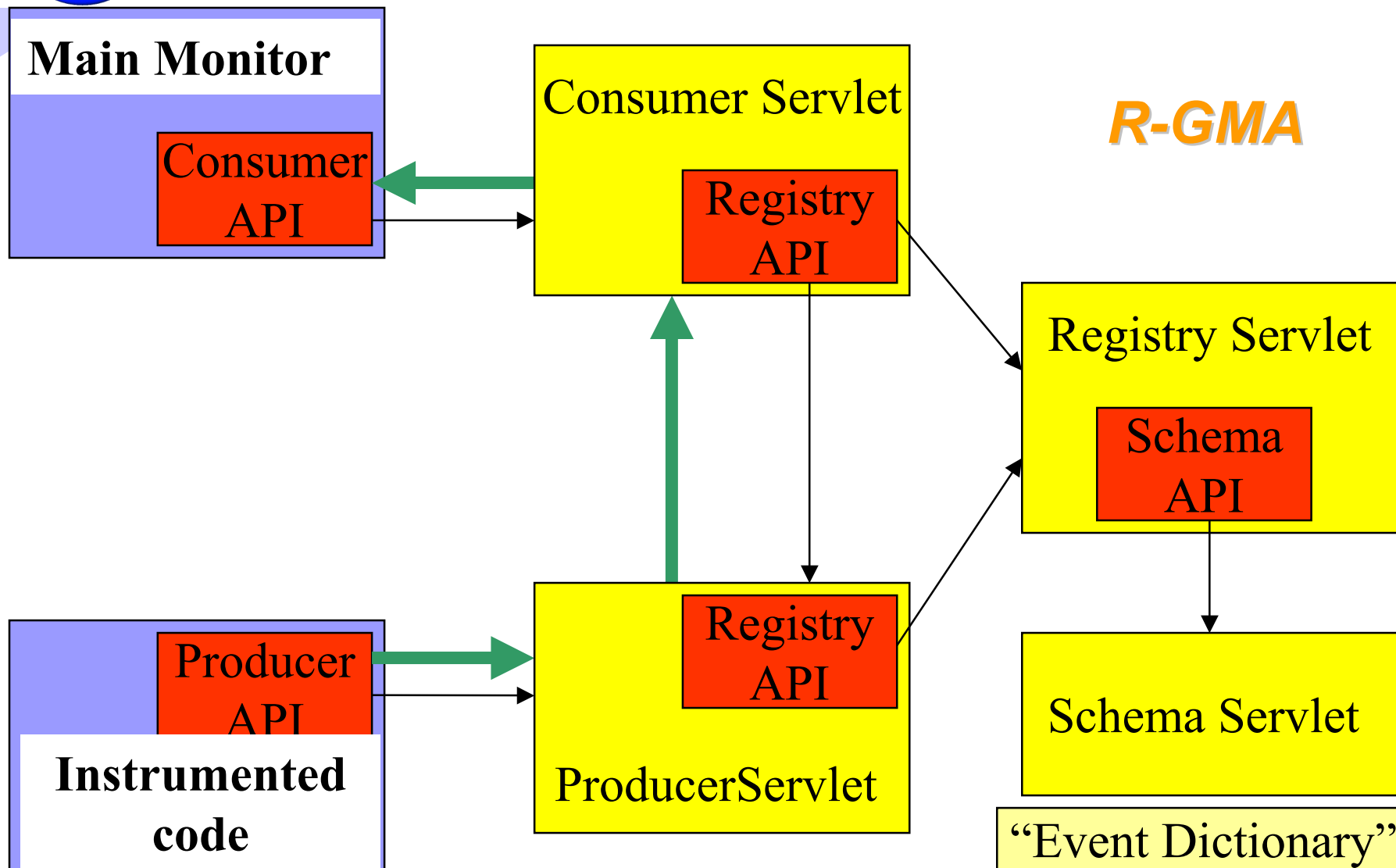
The Pulse



GRM and PROVE

- Monitoring and visualisation of parallel programs
- Goal: Connect GRM to R-GMA
 - Modify instrumentation library to act as a Producer
 - Modify Main Monitor of GRM to act as a Consumer
 - Prove can be untouched
 - C API to R-GMA is needed







The Pulse

- Analysis and visualisation tool for
- monitoring data of resources and services and applications.
- Java code
- data source components →
preprocessing components →
view components
their connections are defined in XML
- “The Pulse” is just a temporary name

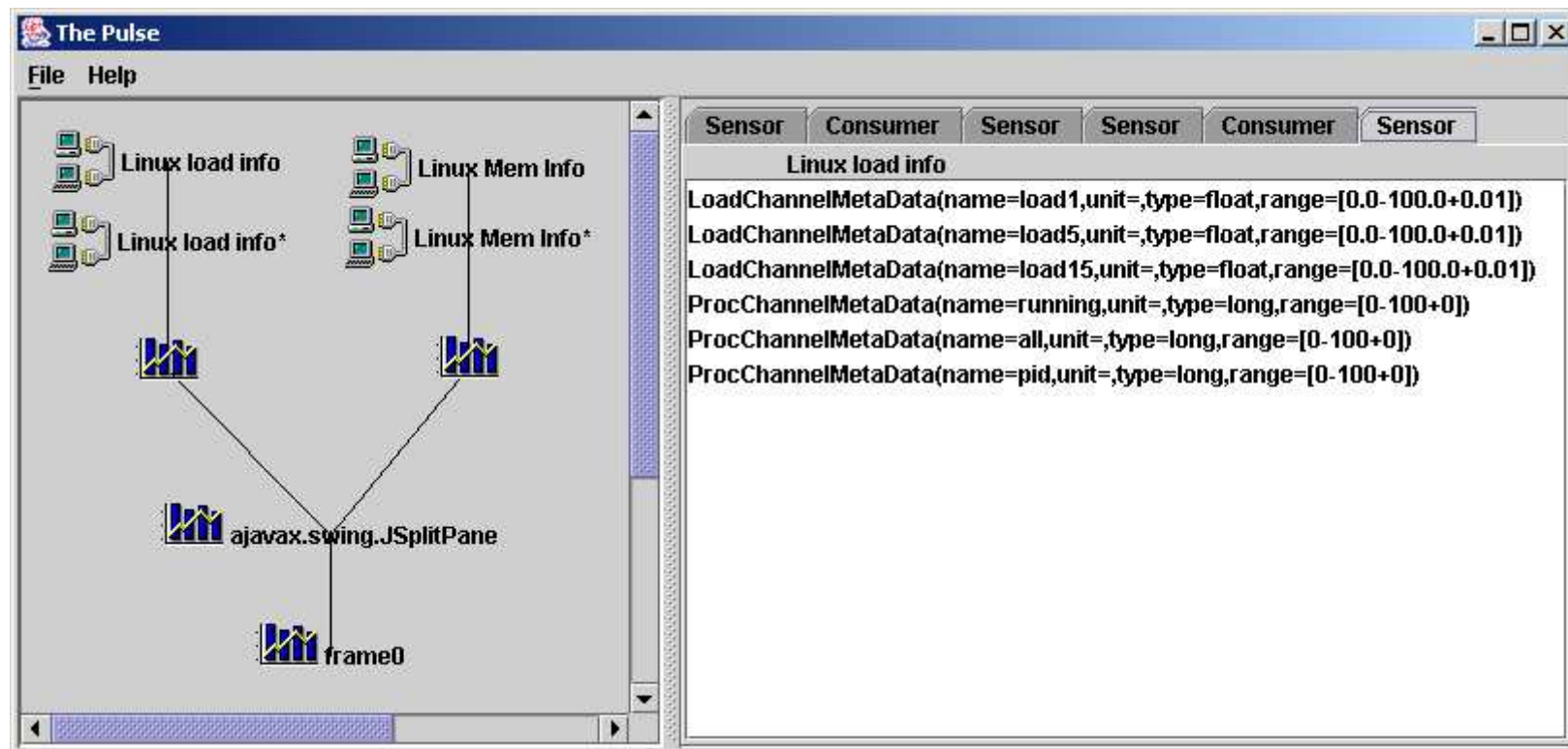


The Pulse

- Separates data model from visualisation modules
- based on Model-View-Controller paradigm
- Data model: meta-data (name, type, unit, range) and interface to the data source.
- Controller: preprocessing, analysis components
- View: displaying components



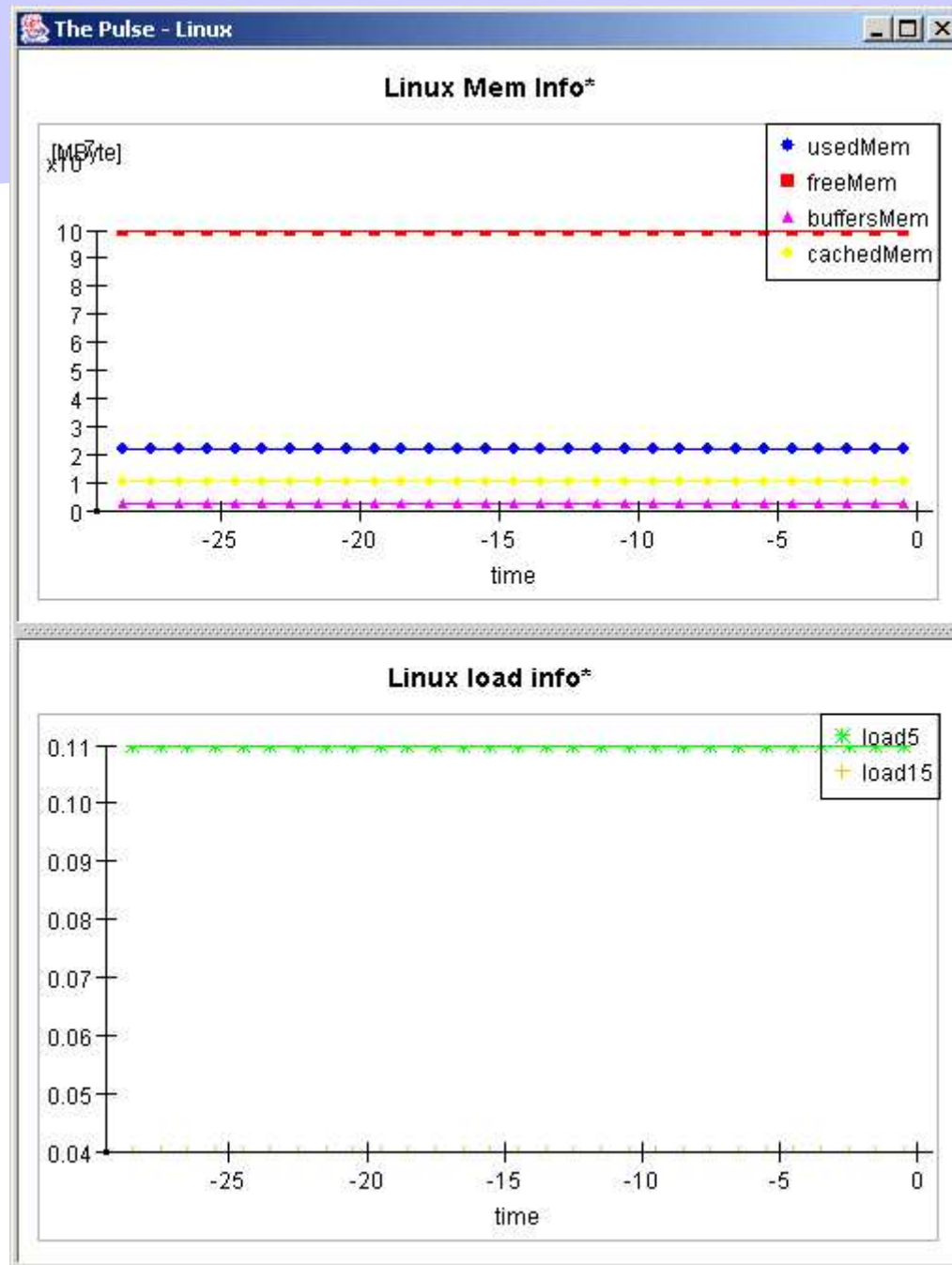
The Pulse





| SysTime[ms] | load1[] | load5[] | load15[] | running[] | all[] | pid[] | |
|---------------|---------|---------|----------|-----------|-------|-------|--|
| 1015070408546 | 0.28 | 0.11 | 0.04 | 1 | 25 | 662 | |
| 1015070409548 | 0.28 | 0.11 | 0.04 | 1 | 25 | 662 | |
| 1015070410689 | 0.28 | 0.11 | 0.04 | 1 | 25 | 662 | |
| 1015070411540 | 0.28 | 0.11 | 0.04 | 1 | 25 | 662 | |
| 1015070412542 | 0.28 | 0.11 | 0.04 | 1 | 25 | 662 | |
| 1015070413543 | 0.28 | 0.11 | 0.04 | 1 | 25 | 662 | |
| 1015070414545 | 0.28 | 0.11 | 0.04 | 1 | 25 | 662 | |
| 1015070415546 | 0.28 | 0.11 | 0.04 | 1 | 25 | 662 | |
| 1015070416538 | 0.28 | 0.11 | 0.04 | 1 | 25 | 662 | |
| 1015070417539 | 0.28 | 0.11 | 0.04 | 1 | 25 | 662 | |
| 1015070418641 | 0.28 | 0.11 | 0.04 | 1 | 25 | 662 | |
| 1015070419542 | 0.28 | 0.11 | 0.04 | 1 | 25 | 662 | |
| 1015070420543 | 0.28 | 0.11 | 0.04 | 1 | 25 | 662 | |

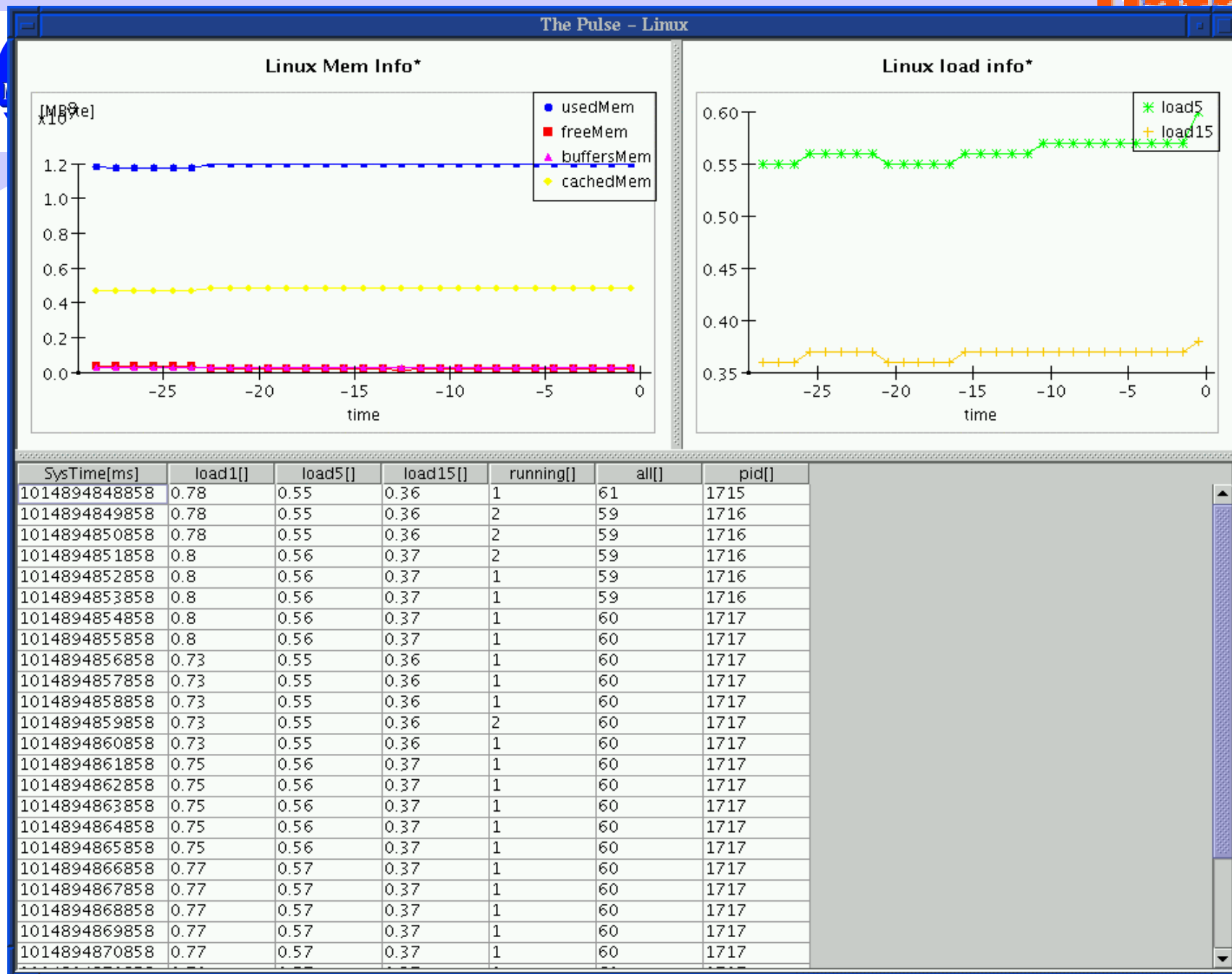
| SysTime[ms] | totalMem[Byte] | usedMem[By... | freeMem[Byte] | sharedMem[... | buffersMem[... | cachedMem[... | totalSwap[By... | usedSwap[B... | freeSwap[Byte] | Mem |
|---------------|----------------|---------------|---------------|---------------|----------------|---------------|-----------------|---------------|----------------|------|
| 1015070405752 | 121438208 | 21622784 | 99815424 | 0 | 2293760 | 10473472 | 139821056 | 0 | 139821056 | 1185 |
| 1015070406754 | 121438208 | 21622784 | 99815424 | 0 | 2293760 | 10473472 | 139821056 | 0 | 139821056 | 1185 |
| 1015070407755 | 121438208 | 21622784 | 99815424 | 0 | 2293760 | 10473472 | 139821056 | 0 | 139821056 | 1185 |
| 1015070408756 | 121438208 | 21622784 | 99815424 | 0 | 2293760 | 10473472 | 139821056 | 0 | 139821056 | 1185 |
| 1015070409748 | 121438208 | 21622784 | 99815424 | 0 | 2293760 | 10473472 | 139821056 | 0 | 139821056 | 1185 |
| 1015070410779 | 121438208 | 21622784 | 99815424 | 0 | 2293760 | 10473472 | 139821056 | 0 | 139821056 | 1185 |
| 1015070411751 | 121438208 | 21622784 | 99815424 | 0 | 2293760 | 10473472 | 139821056 | 0 | 139821056 | 1185 |
| 1015070412752 | 121438208 | 21622784 | 99815424 | 0 | 2293760 | 10473472 | 139821056 | 0 | 139821056 | 1185 |
| 1015070413754 | 121438208 | 21622784 | 99815424 | 0 | 2293760 | 10473472 | 139821056 | 0 | 139821056 | 1185 |
| 1015070414755 | 121438208 | 21622784 | 99815424 | 0 | 2293760 | 10473472 | 139821056 | 0 | 139821056 | 1185 |
| 1015070415757 | 121438208 | 21622784 | 99815424 | 0 | 2293760 | 10473472 | 139821056 | 0 | 139821056 | 1185 |
| 1015070416748 | 121438208 | 21622784 | 99815424 | 0 | 2293760 | 10473472 | 139821056 | 0 | 139821056 | 1185 |
| 1015070417749 | 121438208 | 21622784 | 99815424 | 0 | 2293760 | 10473472 | 139821056 | 0 | 139821056 | 1185 |
| 1015070418751 | 121438208 | 21622784 | 99815424 | 0 | 2293760 | 10473472 | 139821056 | 0 | 139821056 | 1185 |
| 1015070419752 | 121438208 | 21622784 | 99815424 | 0 | 2293760 | 10473472 | 139821056 | 0 | 139821056 | 1185 |
| 1015070420754 | 121438208 | 21622784 | 99815424 | 0 | 2293760 | 10473472 | 139821056 | 0 | 139821056 | 1185 |





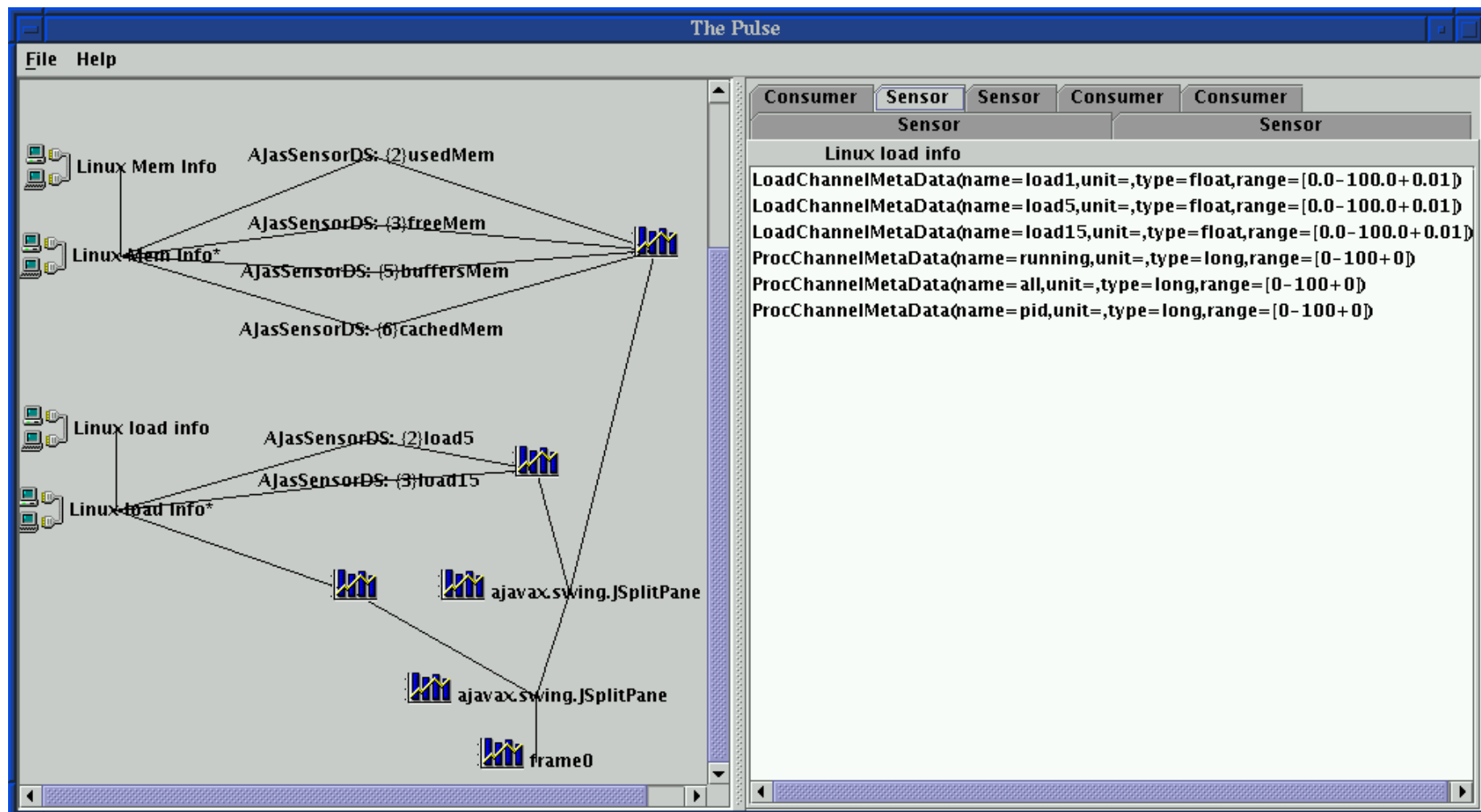
```
E:\Java\pulse\dist\linuxConfig-tabs.xml - Microsoft Internet Explorer - [Working Offline]
File Edit View Favorites Tools Help

<?xml version="1.0" encoding="UTF-8" ?>
<!DOCTYPE PulseConfiguration (View Source for full doctype...)>
- <PulseConfiguration>
- <SamplerBuffer Id="sb-mem">
  <Sensor Id="lm" type="LinuxMemInfo" />
</SamplerBuffer>
- <SamplerBuffer Id="sb-load">
  <Sensor Id="lm2" type="LinuxLoadInfo" />
</SamplerBuffer>
- <FrameView Id="main" title="The Pulse - Linux">
- <SplitPane mode="vertical">
  - <TabularView Id="tab-load">
    <SensorRef refId="sb-load" />
  </TabularView>
  - <TabularView Id="tab-mem">
    <SensorRef refId="sb-mem" />
  </TabularView>
</SplitPane>
</FrameView>
</PulseConfiguration>
```





The Pulse





The Pulse: Future

- Connection to R-GMA
 - Implement an R-GMA Consumer component in Pulse which maps R-GMA data model to the data model of Pulse
- More visualisation modules for different kind of monitoring data
- Analysis: modules for data analysis can be included in Pulse
- Interactivity in Pulse