



Computer and Automation Research Institute
Hungarian Academy of Sciences



Nice GUIs

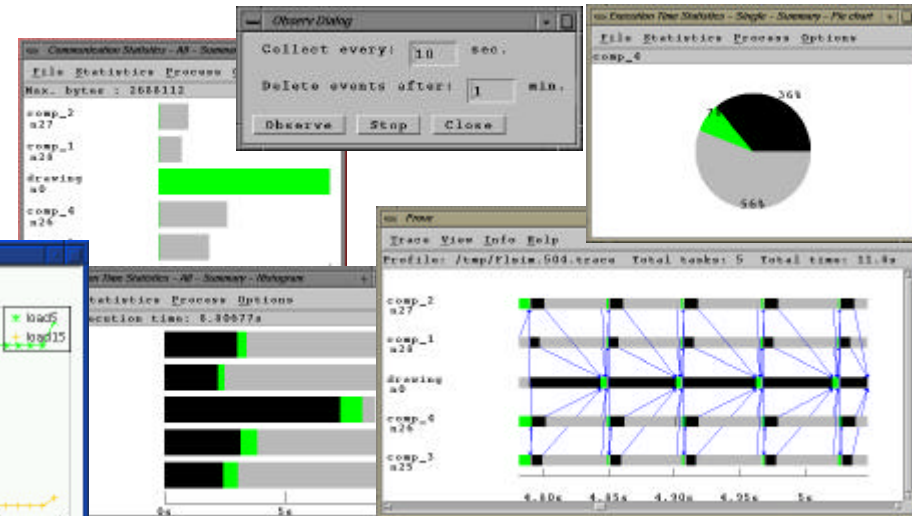
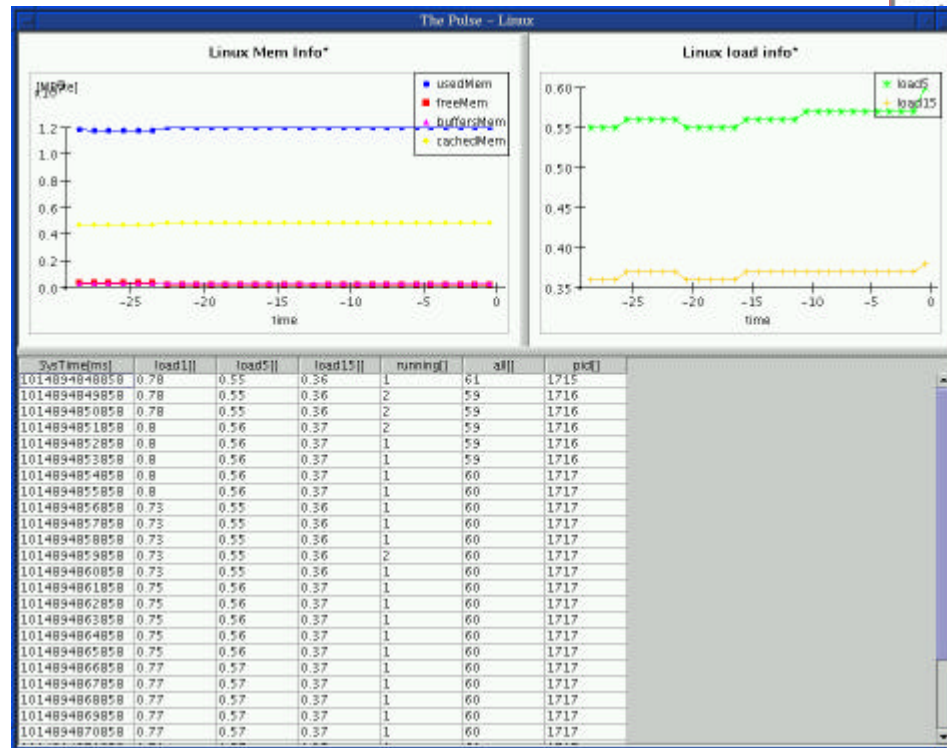
Norbert Podhorszki
<pnorbert@sztaki.hu>

Laboratory of Parallel and Distributed Systems
MTA SZTAKI
www.lpds.sztaki.hu



Contents

GRM and PROVE

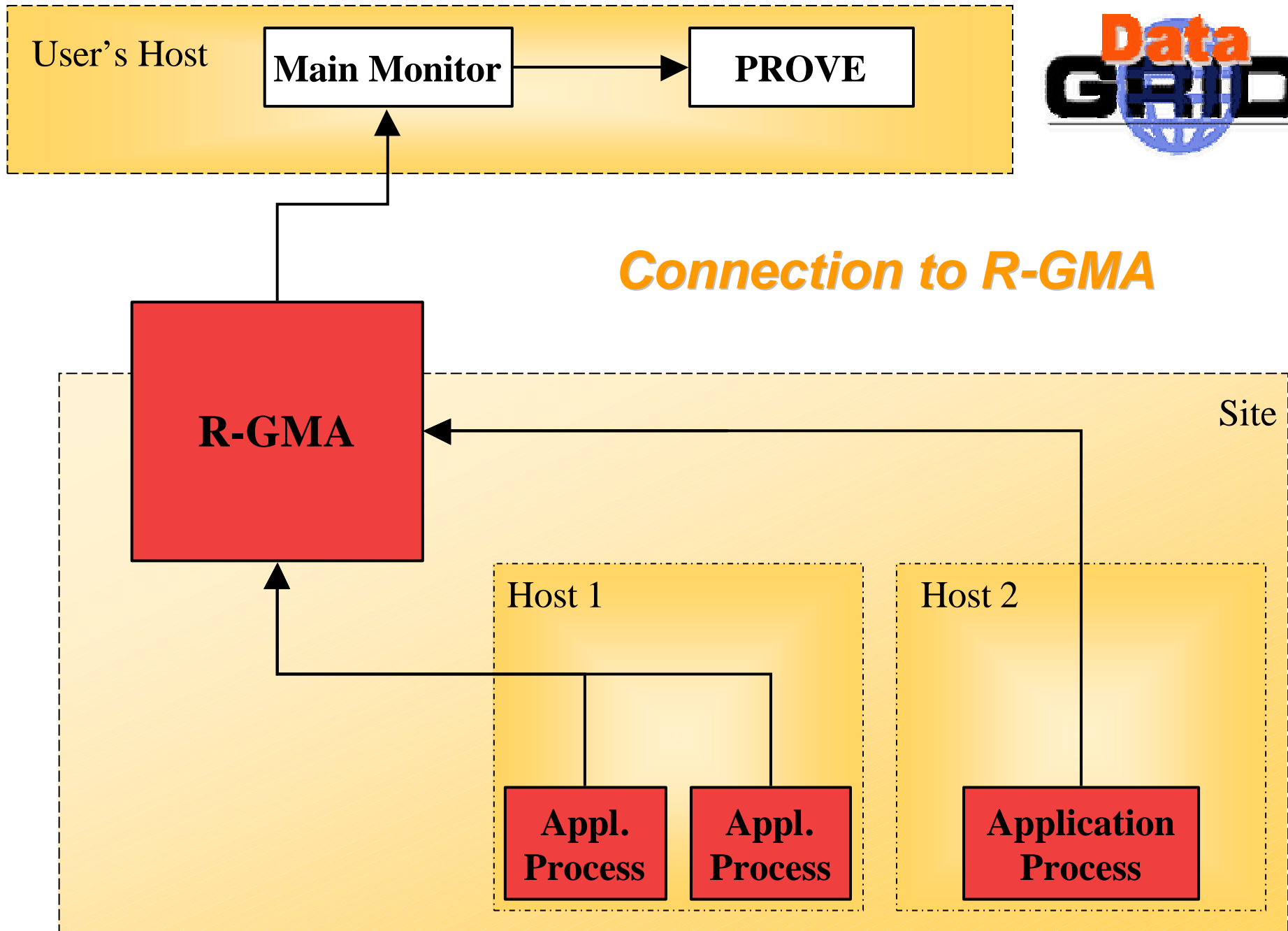


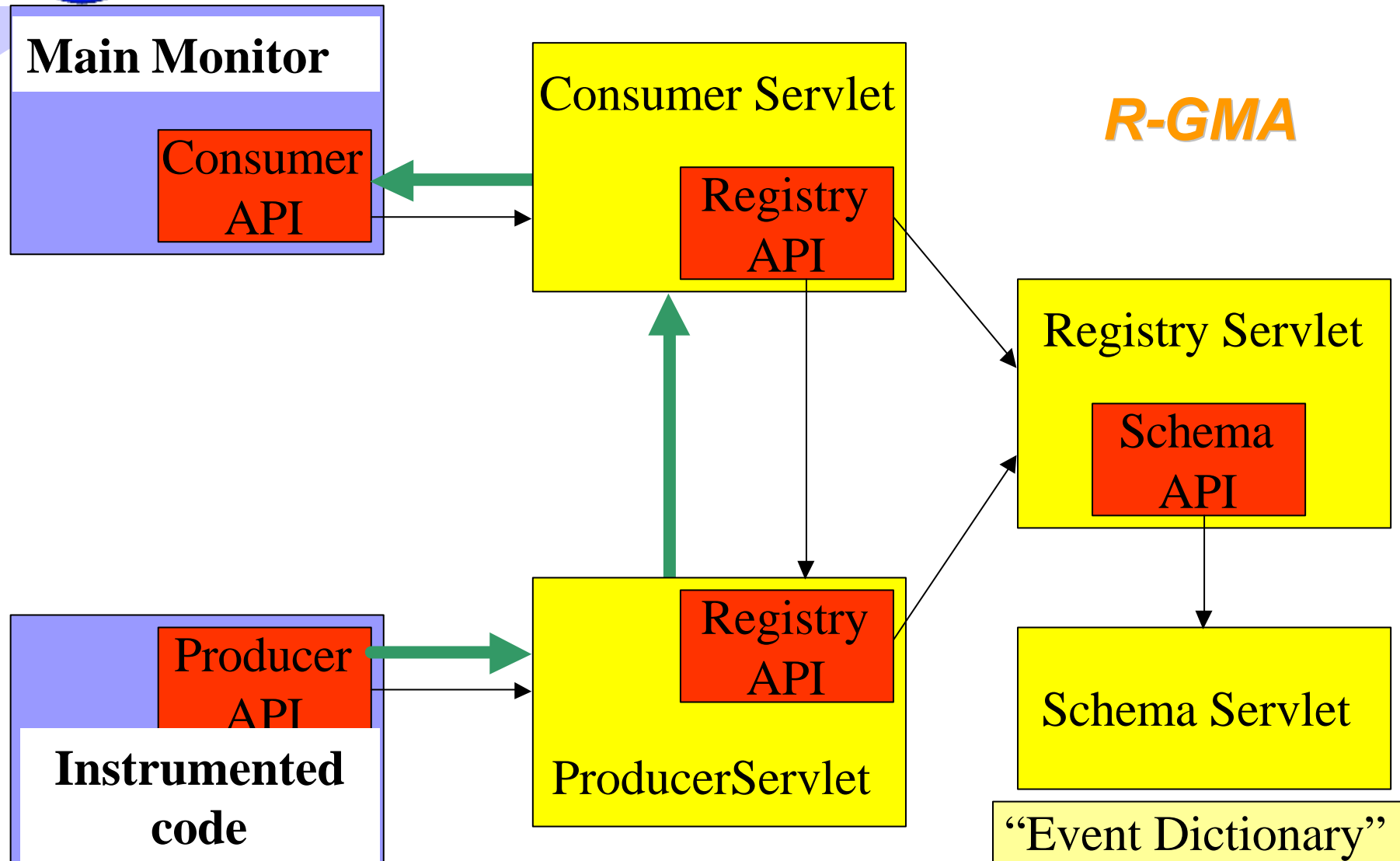
The Pulse



GRM and PROVE

- Monitoring and visualisation of parallel programs
- Goal: Connect GRM to R-GMA
 - Modify instrumentation library to act as a Producer
 - Modify Main Monitor of GRM to act as a Consumer
 - Prove can be untouched
 - C API to R-GMA is needed







The Pulse

- Analysis and visualisation tool for
- monitoring data of resources and services and applications.
- Java code
- data source components →
preprocessing components →
view components
their connections are defined in XML
- “The Pulse” is just a temporary name

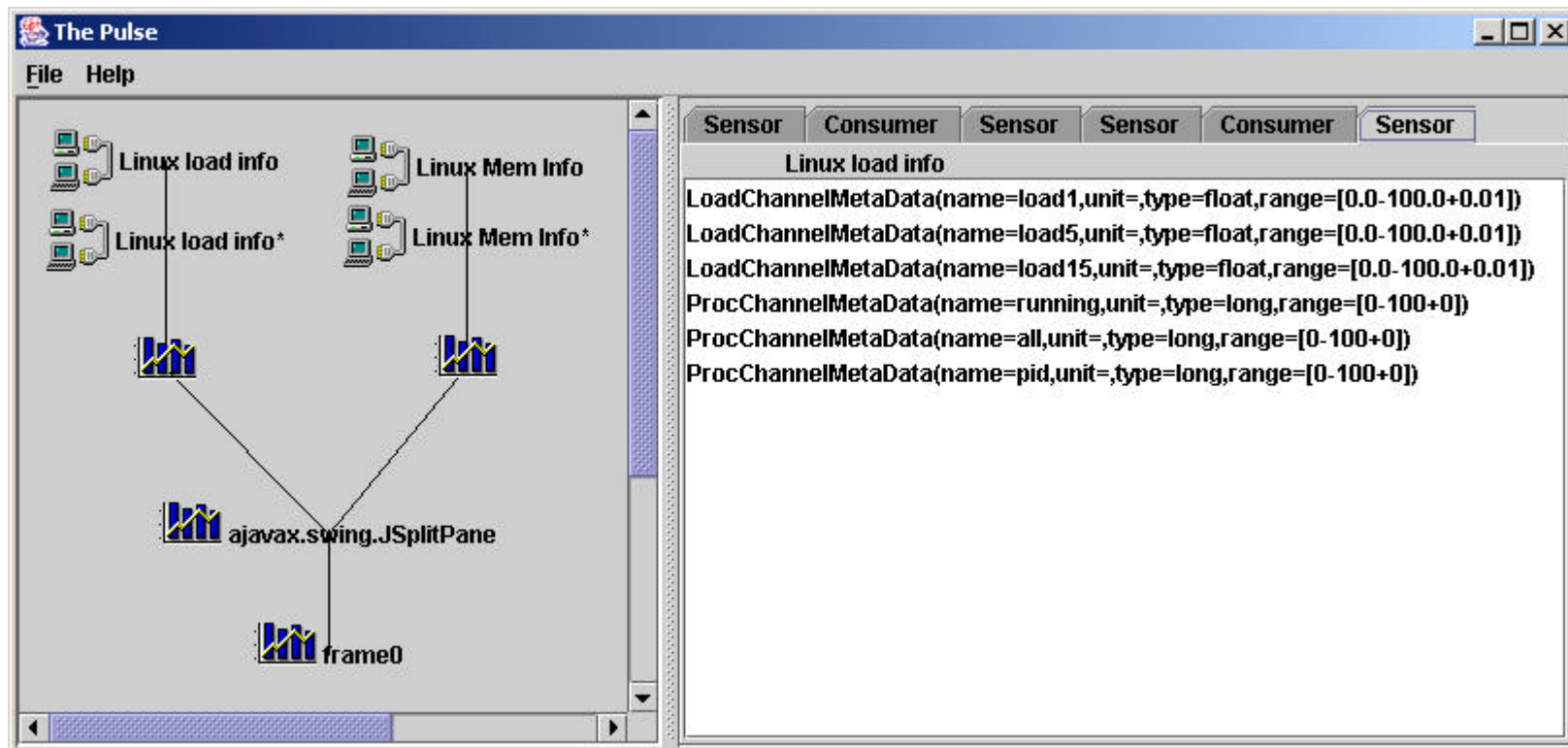


The Pulse

- Separates data model from visualisation modules
- based on Model-View-Controller paradigm
- Data model: meta-data (name, type, unit, range) and interface to the data source.
- Controller: preprocessing, analysis components
- View: displaying components



The Pulse

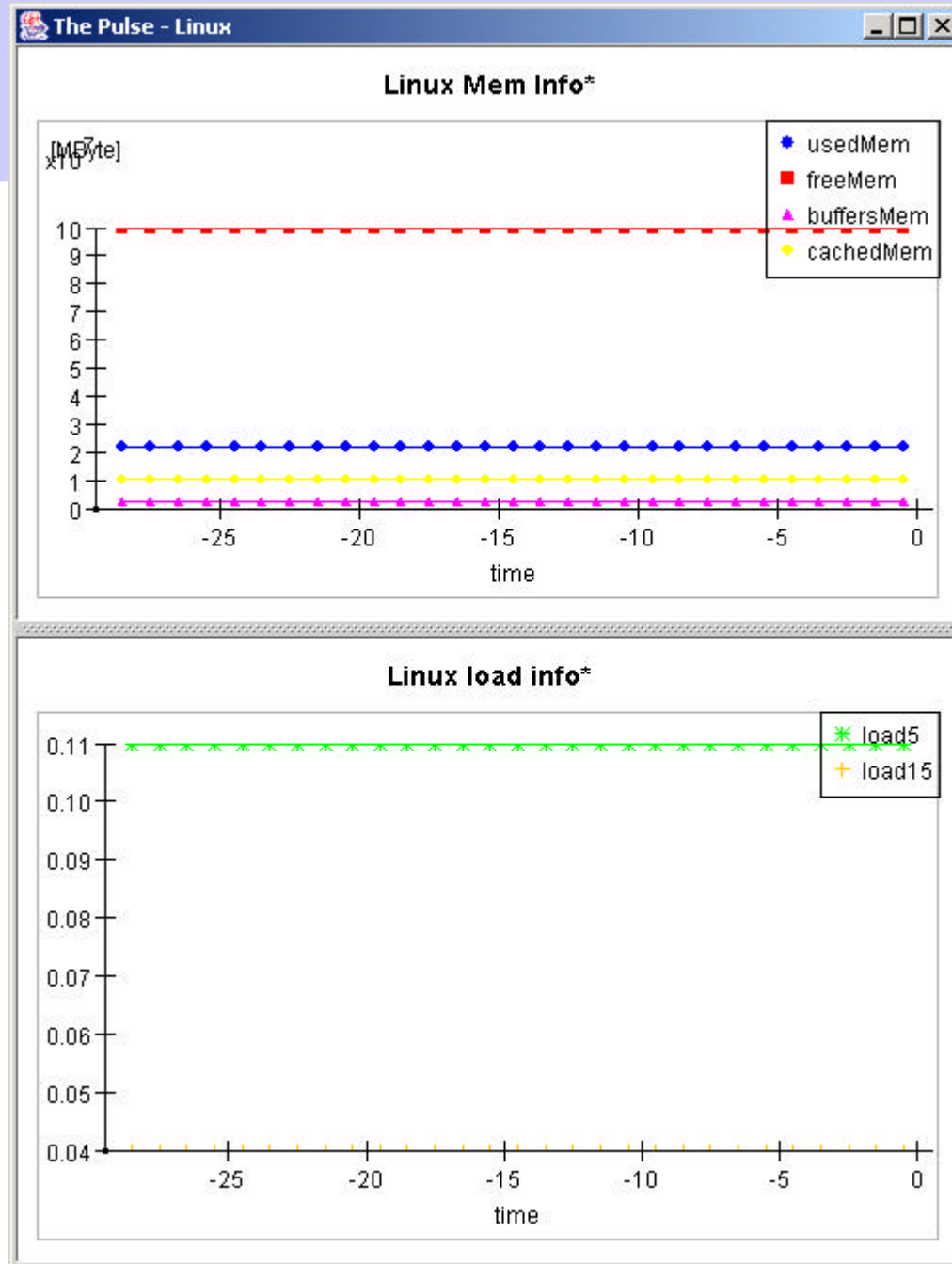




The Pulse - Linux

SysTime[ms]	load1[]	load5[]	load15[]	running[]	all[]	pid[]
1015070408546	0.28	0.11	0.04	1	25	662
1015070409548	0.28	0.11	0.04	1	25	662
1015070410689	0.28	0.11	0.04	1	25	662
1015070411540	0.28	0.11	0.04	1	25	662
1015070412542	0.28	0.11	0.04	1	25	662
1015070413543	0.28	0.11	0.04	1	25	662
1015070414545	0.28	0.11	0.04	1	25	662
1015070415546	0.28	0.11	0.04	1	25	662
1015070416538	0.28	0.11	0.04	1	25	662
1015070417539	0.28	0.11	0.04	1	25	662
1015070418641	0.28	0.11	0.04	1	25	662
1015070419542	0.28	0.11	0.04	1	25	662
1015070420543	0.28	0.11	0.04	1	25	662

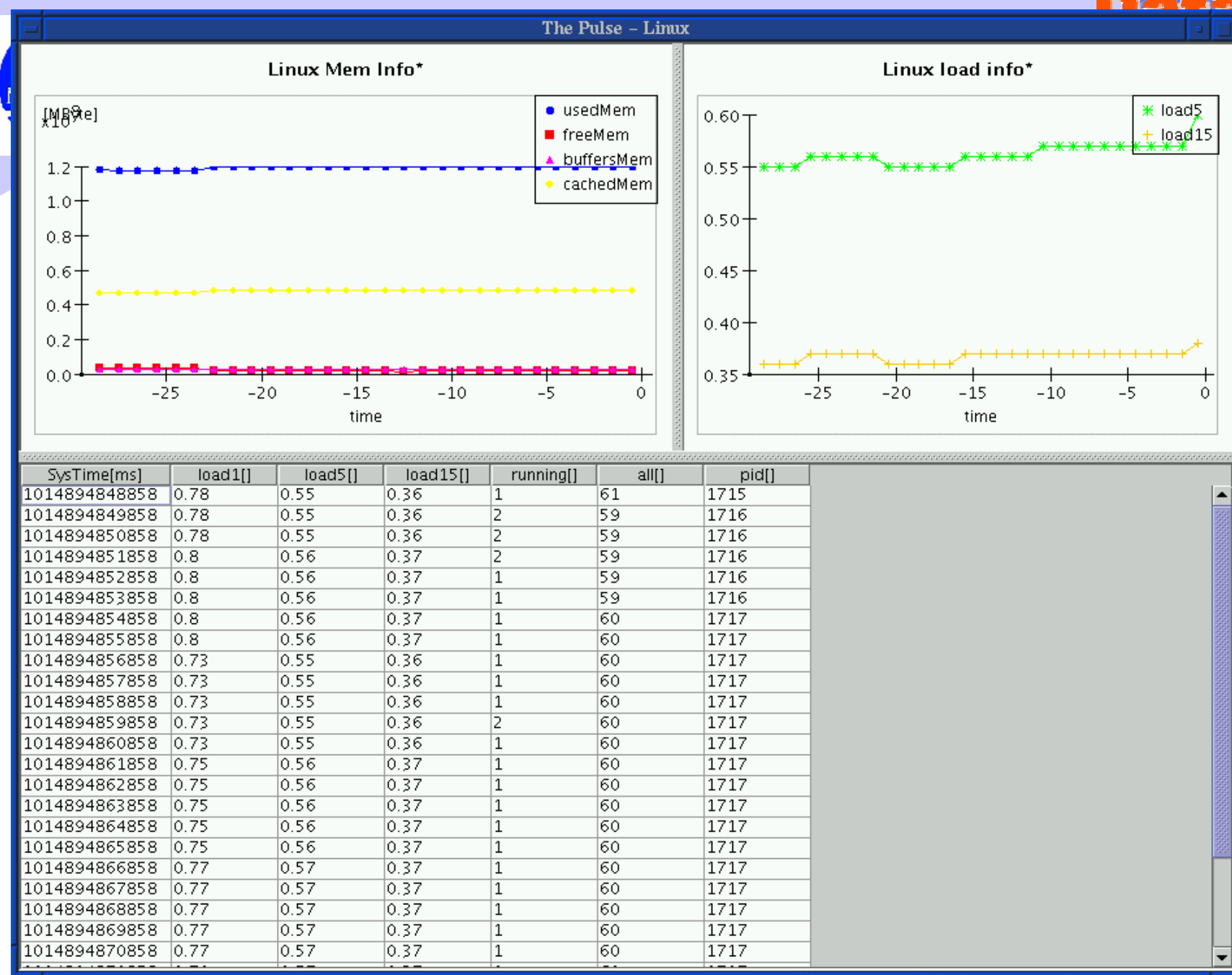
SysTime[ms]	totalMem[Byte]	usedMem[By...]	freeMem[Byte]	sharedMem[...]	buffersMem[...]	cachedMem[...]	totalSwap[By...]	usedSwap[B...	freeSwap[Byte]	Mem
1015070405752	121438208	21622784	99815424	0	2293760	10473472	139821056	0	139821056	1185
1015070406754	121438208	21622784	99815424	0	2293760	10473472	139821056	0	139821056	1185
1015070407755	121438208	21622784	99815424	0	2293760	10473472	139821056	0	139821056	1185
1015070408756	121438208	21622784	99815424	0	2293760	10473472	139821056	0	139821056	1185
1015070409748	121438208	21622784	99815424	0	2293760	10473472	139821056	0	139821056	1185
1015070410779	121438208	21622784	99815424	0	2293760	10473472	139821056	0	139821056	1185
1015070411751	121438208	21622784	99815424	0	2293760	10473472	139821056	0	139821056	1185
1015070412752	121438208	21622784	99815424	0	2293760	10473472	139821056	0	139821056	1185
1015070413754	121438208	21622784	99815424	0	2293760	10473472	139821056	0	139821056	1185
1015070414755	121438208	21622784	99815424	0	2293760	10473472	139821056	0	139821056	1185
1015070415757	121438208	21622784	99815424	0	2293760	10473472	139821056	0	139821056	1185
1015070416748	121438208	21622784	99815424	0	2293760	10473472	139821056	0	139821056	1185
1015070417749	121438208	21622784	99815424	0	2293760	10473472	139821056	0	139821056	1185
1015070418751	121438208	21622784	99815424	0	2293760	10473472	139821056	0	139821056	1185
1015070419752	121438208	21622784	99815424	0	2293760	10473472	139821056	0	139821056	1185
1015070420754	121438208	21622784	99815424	0	2293760	10473472	139821056	0	139821056	1185





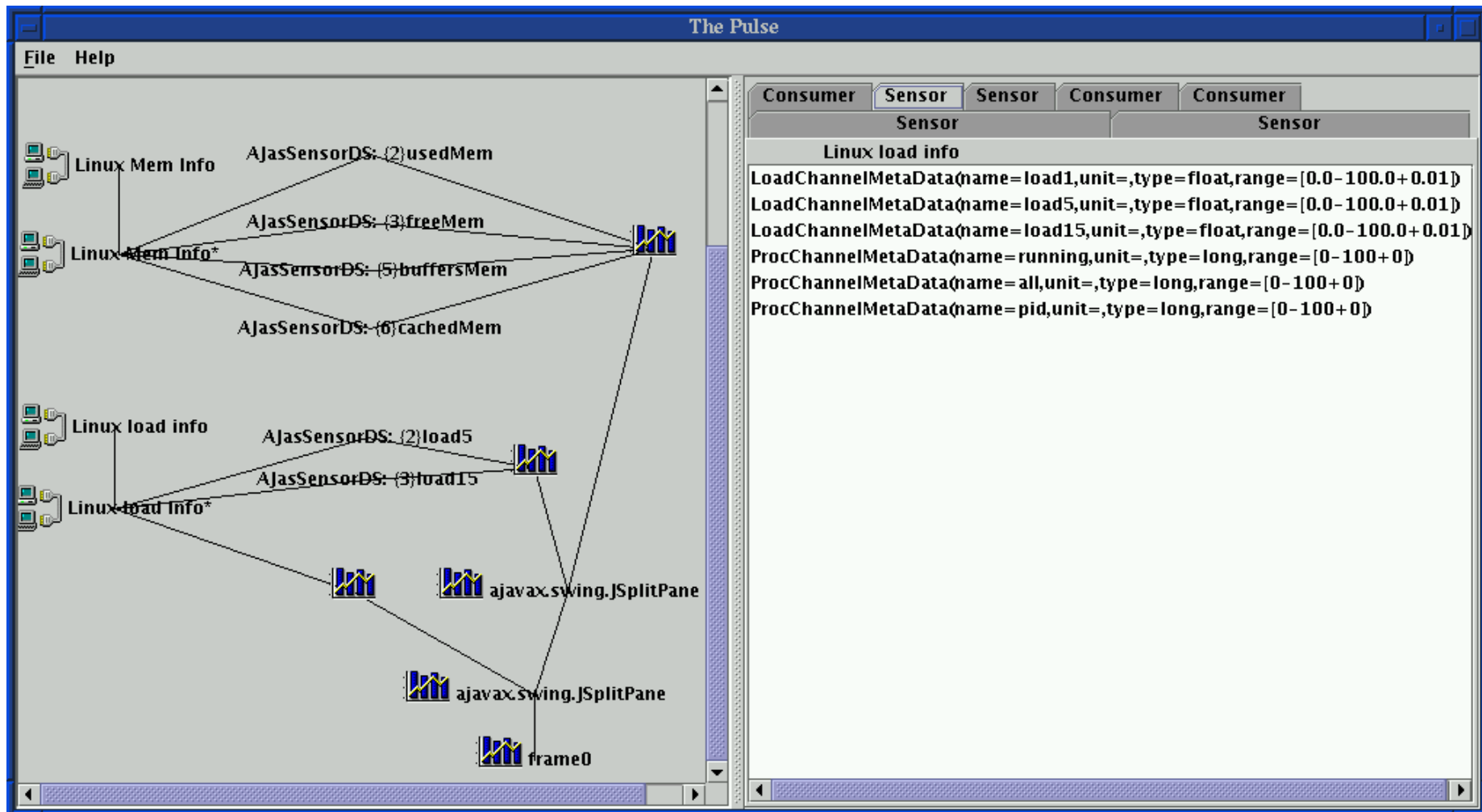
```
E:\Java\pulse\dist\linuxConfig-tabs.xml - Microsoft Internet Explorer - [Working Offline]
File Edit View Favorites Tools Help

<?xml version="1.0" encoding="UTF-8" ?>
<!DOCTYPE PulseConfiguration (View Source for full doctype...)>
- <PulseConfiguration>
- <SamplerBuffer Id="sb-mem">
  <Sensor Id="lm" type="LinuxMemInfo" />
</SamplerBuffer>
- <SamplerBuffer Id="sb-load">
  <Sensor Id="lm2" type="LinuxLoadInfo" />
</SamplerBuffer>
- <FrameView Id="main" title="The Pulse - Linux">
- <SplitPane mode="vertical">
- <TabularView Id="tab-load">
  <SensorRef refId="sb-load" />
</TabularView>
- <TabularView Id="tab-mem">
  <SensorRef refId="sb-mem" />
</TabularView>
</SplitPane>
</FrameView>
</PulseConfiguration>
```





The Pulse





The Pulse: Future

- Connection to R-GMA
 - Implement an R-GMA Consumer component in Pulse which maps R-GMA data model to the data model of Pulse
- More visualisation modules for different kind of monitoring data
- Analysis: modules for data analysis can be included in Pulse
- Interactivity in Pulse