



LCG - Savannah

Y. Perrin / EP-SFT

LCG Application Area Review

What is LCG Savannah ?

- ❑ The Web portal for LCG SW projects
- ❑ Customized from GNU (SourceForge as origin)
- ❑ Based on Apache, PHP, mySQL
- ❑ Functionality:
 - Bug tracking
 - Task management
 - Mailing lists, news, faqs
 - Access to CVS repository
 - Download area, etc
- ❑ Project and user oriented views

Collaborative aspects

- ❑ Bug reporting with follow-ups, cc-forwarding, notification to related persons
- ❑ Features requests and bugs interdependencies
- ❑ Bugs assignment by project leaders
- ❑ Development suggestions & related task management
- ❑ Project communication (internal and external)
 - news (global / project specific)
 - email notification (configurable per project, per user, per event)

LCG Savannah homepage

The LCG software development portal

This web site is provided by the LCG Software Process & Infrastructure (SPI) project. It offers facilities for development, distribution and maintenance of LCG software projects and related projects.

If you would like to use these facilities for your project, then go to the **Register new project** menu entry that is displayed after login.

If you have questions about using this site, please consult the **user docs/admin docs** (left menu bar). If you don't find an answer to your problem, use the **support** link and then choose **Submit a Request** in the menu bar which will appear at the top of the page.

The software used to run this site has been developed by the GNU Savannah project and customized for LCG use by SPI.

Latest News

Savannah was inaccessible
dfreich - 2003-May-08 06:49 - 0 messages
Due to a failed automatic security update, the data base server went down and Savannah was inaccessible from 2h am until 8h am.

Server Statistics

Hosted Projects: **70**

- 4 Savannah Project Portal
- 9 LCG Application Area
- 13 CMS
- 7 LHCb
- 2 LCG Grid deployment
- 3 HepPackages
- 24 ATLAS
- 7 CERN IT
- 1 ALICE
- 0 New type
- + 0 Registrations Pending

Registered Users: **395**

Newest Savannah Project Portal Projects

- (10/24) testproject
- (10/23) savcern

[all Savannah Project Portal projects]

Newest LCG Application Area Projects

- (09/09) DIRAC-2
- (07/04) Simulation
- (02/26) CASTOR
- (02/21) PI
- (02/12) SCRAMToolBox
- (01/20) SEAL

Development Portal

type's account

- My Personal Page ▶
- My Account Conf ▶
- Bookmark This ▶
- Logout ▶

Administration

- Main Page ▶
- Group Type Admin ▶
- Group Admin ▶
- User Admin ▶
- Pending Projects ▶
- Site News Approval ▶
- Mass Mail ▶
- People Help Admin ▶

Projects

- Hosted Projects ▶

Project homepage

The screenshot shows a web browser window titled "savannah: Project Info - SPI - Microsoft Internet Explorer provided by CERN". The address bar shows "https://savannah.cern.ch/projects/spi/". The main content area is titled "SPI - Summary".

Public Areas: [Main](#) | [Homepage](#) | [FAQ](#) | [Bugs](#) | [Support](#) | [Patches](#) | [Mailing Lists](#) | [Tasks](#) | [News](#) | [CVS](#) | [Files](#)

Administration: [Main](#) | [Bugs](#) | [Support](#) | [Patches](#) | [Mailing Lists](#) | [Tasks](#) | [News](#) | [Files](#)

Project Type: LCG Application Area projects

The goal of the project SPI (Software Process & Infrastructure) is to provide to the development projects of the LCG.

LCG SPI Direct Links

- [SPI Home page](#)
- [Main LCG SPI web site](#)
- [Index Page](#)
- [Page with many useful links to LCG developers and users](#)
- [Support](#)
- [Ask for help and report comments, feedback and bugs to SPI](#)
- [Workbook](#)
- [Main workbook documentation from the LCG Projects](#)
- [Software Download](#)

Developer Info

Project Admins:

- mancera
- dfeich
- fjob
- aimar
- testadmin

Developers: 14 [View Members]

Group id: 5

Left sidebar:

- Development Portal**
- type's account**
- [My Personal Page](#)
- [My Account Conf](#)
- [Bookmark This](#)
- [Logout](#)
- Administration**
- [Main Page](#)
- [Group Type](#)
- [Admin](#)
- [Group Admin](#)
- [User Admin](#)
- [Pending Projects](#)
- [Site News](#)
- [Approval](#)

Overall approach and benefits

- ❑ **Common** set of services, **centrally** managed:
 - exposure to a large community
 - common structure, functionality and interface
 - no maintenance & upgrade load on the projects

- ❑ **Configurable** for the **projects needs**

- ❑ **Configurable** for the **user needs** and automatically adapted to his / her rights

Project's bug administration

savannah: Bug Administration - Microsoft Internet Explorer provided by CERN

File Edit View Favorites Tools Help

Address <https://savannah.cern.ch/bugs/admin/?group=savcern> Go Links

savcern - Bugs Administration

LCG
Development Portal

Public Areas: [Main](#) | [Homepage](#) | [FAQ](#) | [Bugs](#) | [Support](#) | [Patches](#) | [Mailing Lists](#) | [Tasks](#) | [News](#) | [CVS](#) | [Files](#)

Administration: [Main](#) | **[Bugs](#)** | [Support](#) | [Patches](#) | [Mailing Lists](#) | [Tasks](#) | [News](#) | [Files](#)

>> [Manage Field Usage](#) | [Manage Field Values](#) | [Manage Bug Reports](#) | [Notification Settings](#) | [Other Settings](#)

Bug Administration

Manage Field Usage

Define what bug fields you want to use in the bug tracking system of this project. (remark: some of the fields like status, assignee, severity... are mandatory and cannot be removed).

Manage Field Values

Define the set of values for the bug fields you have decided to use in your bug tracking system for this specific project.

Manage Bug Reports

Define personal or project-wide bug reports: what search criteria to use and what bug fields to show in the bug

type's account

- [My Personal Page](#)
- [My Account Conf](#)
- [Bookmark This](#)
- [Logout](#)

Administration

- [Main Page](#)
- [Group Type Admin](#)
- [Group Admin](#)
- [User Admin](#)
- [Pending Projects](#)
- [Site News Approval](#)
- [Mass Mail](#)
- [People Help Admin](#)

Projects

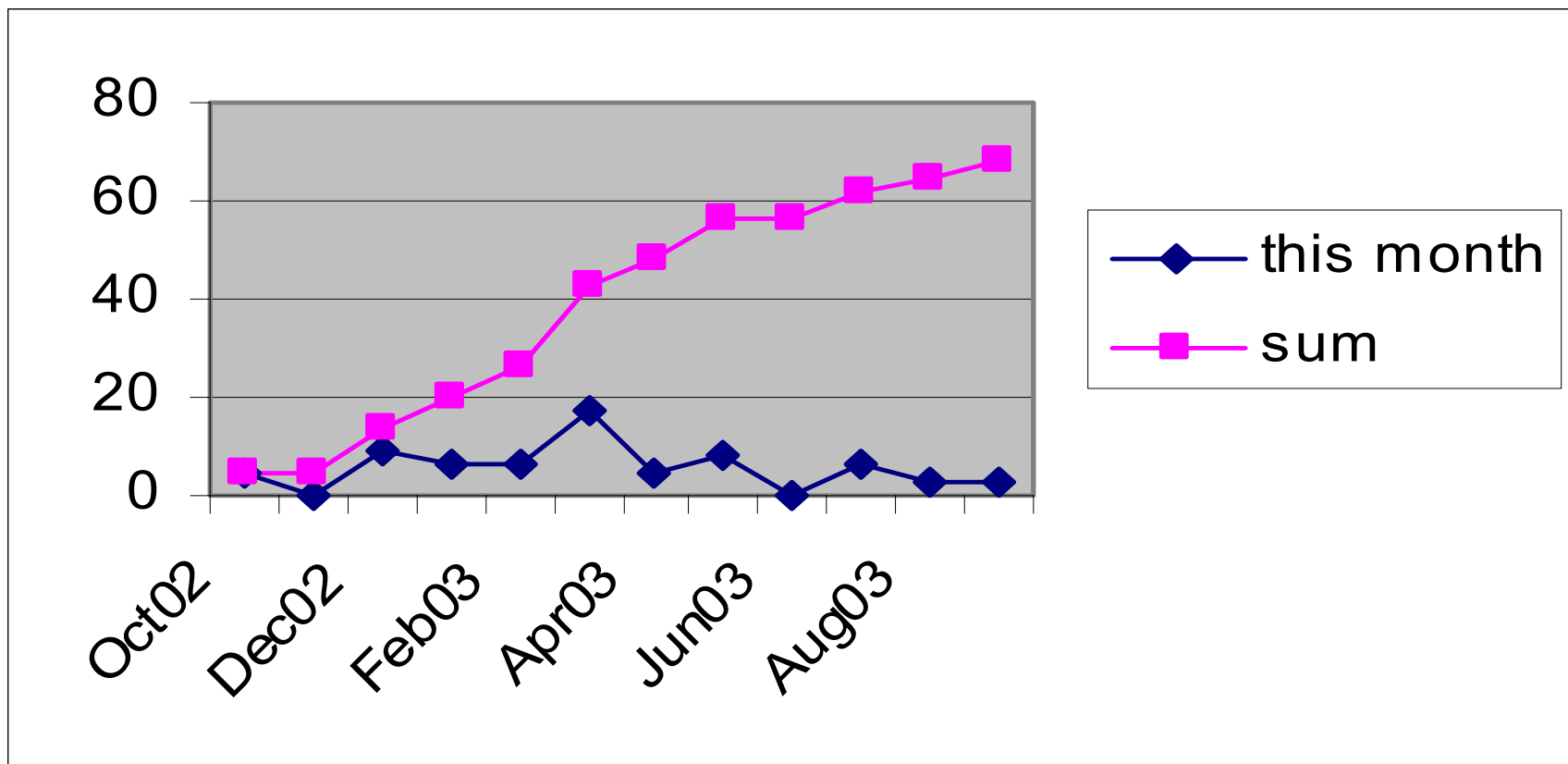
- [Hosted Projects](#)

Local intranet

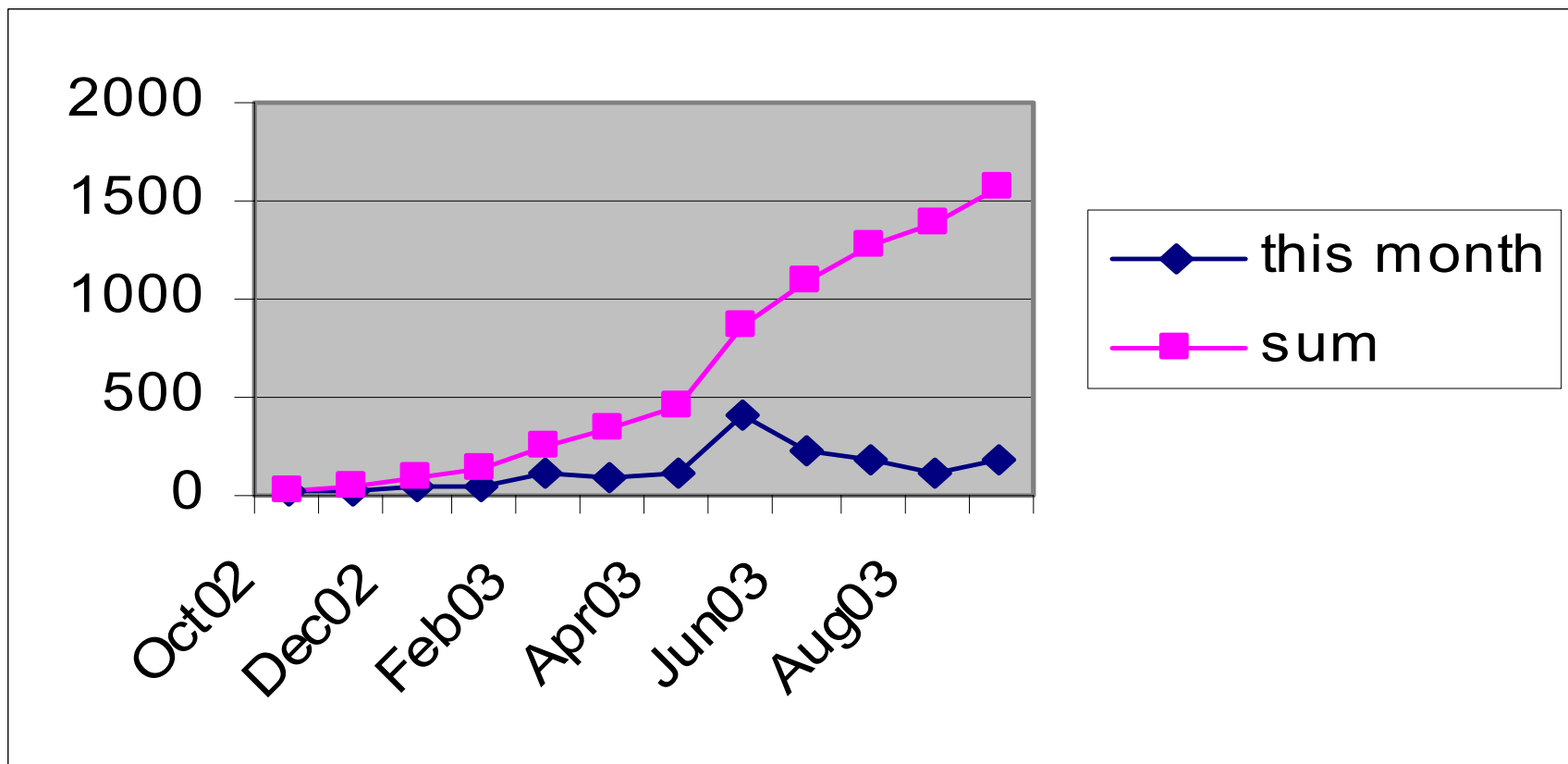
Benefits [continued]

- Totally web based
- Single entry point to project(s)
- Uniform access to project information
- Set up common web infrastructure for a project without coding

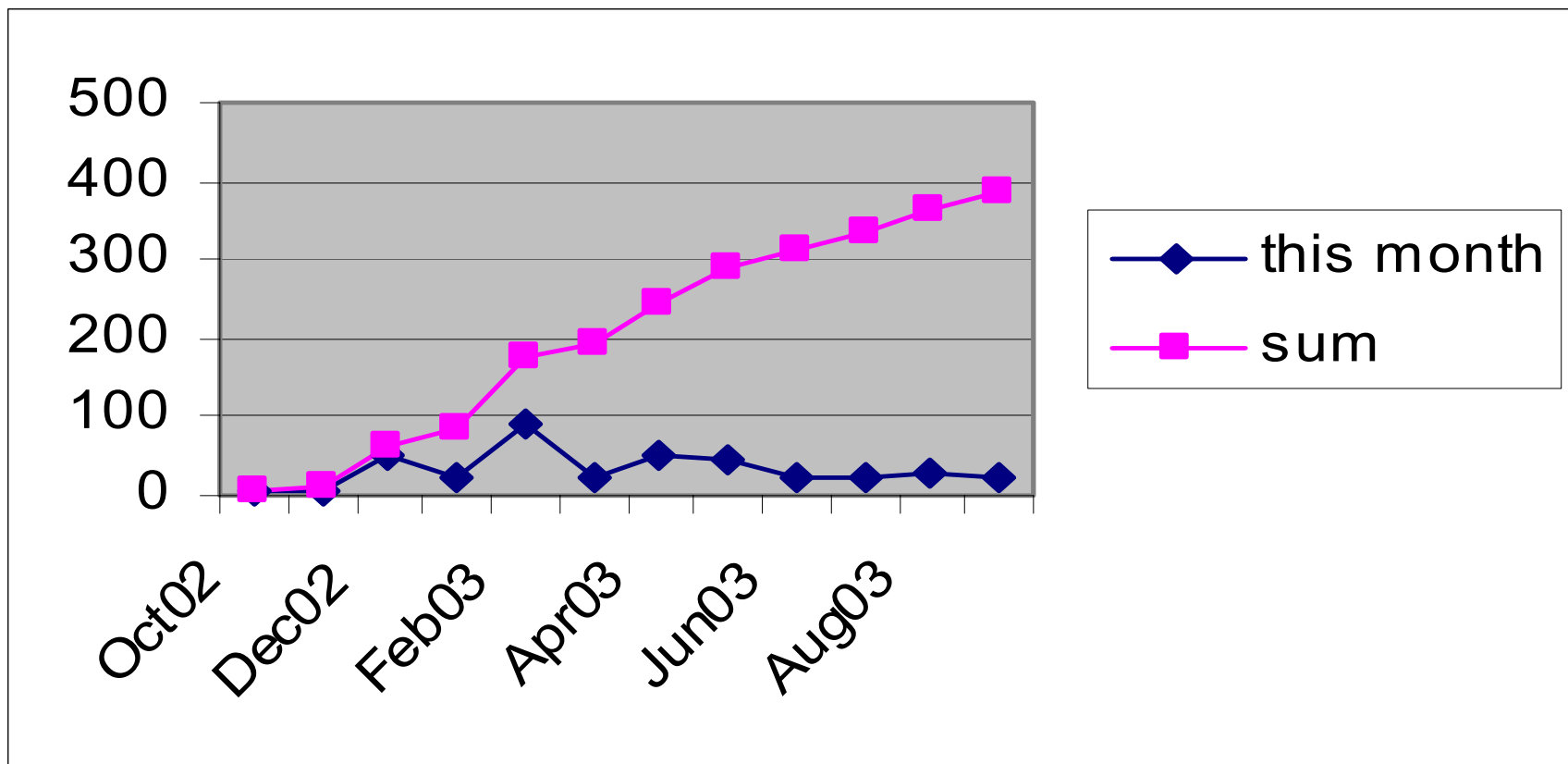
Creation of projects (still active today)



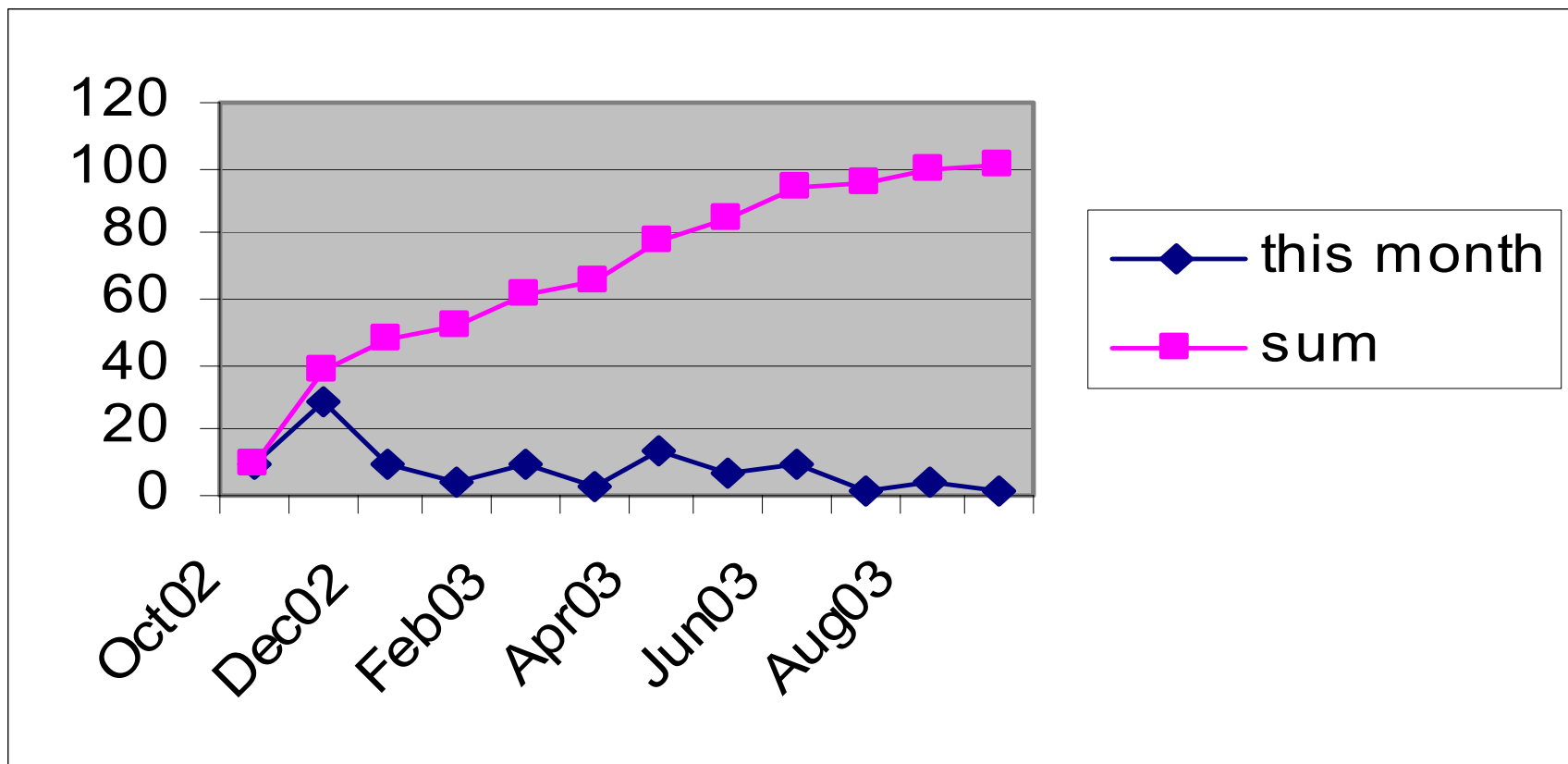
Submission of bugs



Registration of users



Bugs submitted for Savannah (itself)



Support load (for SPI)

- initially (Derek + Frederik):
 - installation from GNU, general bug fixing and improvements
 - implemented bulk user registration
 - integration with AFS authentication
 - sending these improvements back to GNU

- now (Yves):
 - administration (project approval)
 - maintenance (submitted bugs)
 - development (support requests)
 - staying in phase with GNU and keep contact with other developers

Status

- ❑ 70 hosted projects, 395 registered users
- ❑ major new release in preparation (merge of CERN and GNU branches, common tracker for all services, etc)
- ❑ we work closely with the open source people
- ❑ still a few minor bugs and limited documentation (online help & faqs) ... will be fixed gradually
- ❑ LCG Savannah is accessible at: <http://savannah.cern.ch>