



Enabling Grids for
E-science in Europe

EGEE Greece kick-off, May 27-28th, 2004

NA3 Overview and Execution plan

Christos Aposkitis
Training manager, GRNET



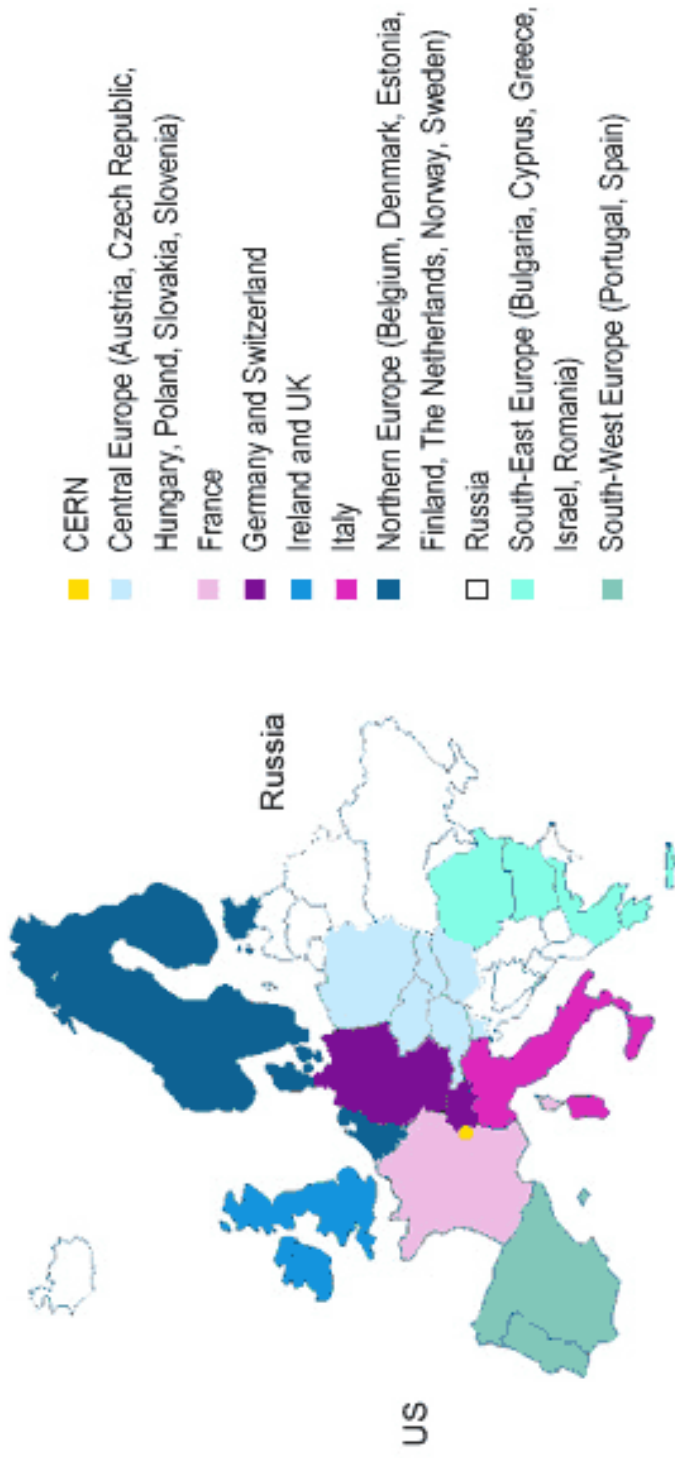
Objectives of this session

- Understand NA3 organisation and mission
- Overview of the execution plan
- Identify missing inputs and action points
- Agree on partners' responsibilities

Outline

- **NA3 Overview**
 - High-level NA3 organisation and activities
- **Execution plan**
 - NA3 SEE task overview
 - Deliverables and milestones
 - Organisation
 - Overall
 - Country-specific
 - Courses projection
 - WBS
 - TA effort estimate
- **Communication procedures**
- **Action points**

EGEE Regions



NA3 objectives

- Producing a portfolio of training material and courses from introductory to advanced user material
- Using this material to train a wide variety of users both **internal** to the EGEE consortium and from the **external** user groups from across Europe who will make use of the infrastructure
- Ensuring that EGEE Team Spirit is engendered early in the project's lifetime

What is EGEE?

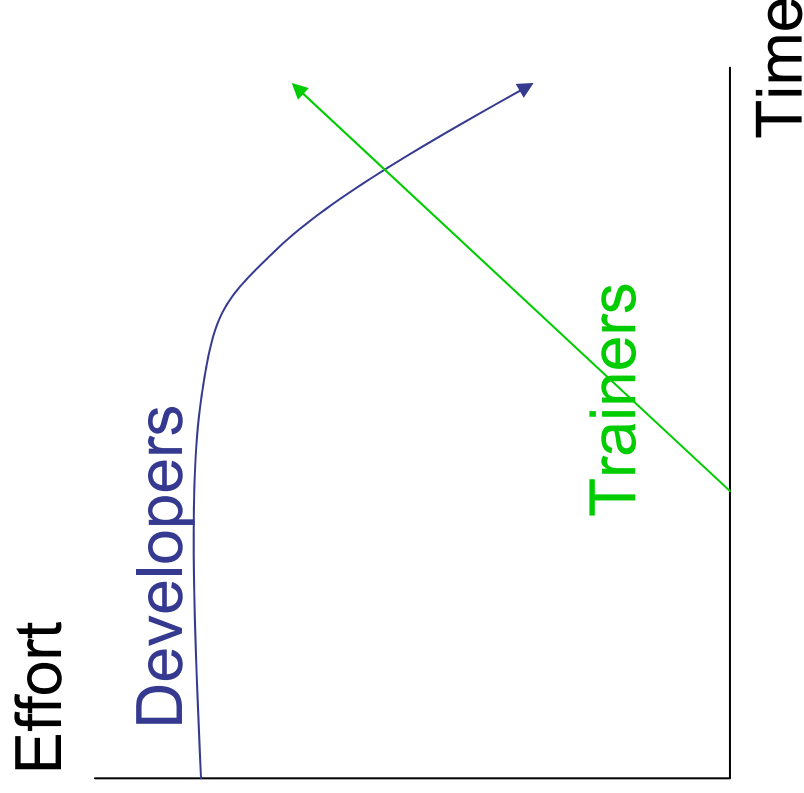
- A major EU FP6 project, second to GN2
- A strategic priority for the EU
- Unification of past Grid efforts and projects
- Strengthening of the role of Europe in Grid developments on the worldwide scene
- European scientific community stands to benefit from these
- 300 FTEs for 2 years
- More than 1000 people actually involved
- A study in inter-national, inter-grouping project management

TA requirement for courses

Course Type	Average Attendance	Course Requirements	Number per Year
Induction	50	2 Day Web Access	≥ 10
Application Developer Training	25	4 Day Workstations	≥ 8
Advanced Courses	25	5 Day Workstations	≥ 2
<i>Internal</i> Technical Activity Specific Retreats	30	2 Day	≥ 6

Training of trainers (internal)

- ... to a level deeper than that at which they train.
- Training places demands on other activities, before the training burden can be lifted from them!
- Trainers are early users.



Initial planning (internal)

- The initial training material for external courses, including tutorials and practical classes is being developed and managed by NeSC (UEDIN) with input from other EGEE teams
- Initial team focus: EGEE internal induction course
 - First run 26-28 April at NeSC (for EGEE trainers and participants)
 - Draft modules onto Web at the end of May
 - Second run 18-20 May at CERN (for EGEE trainers and participants)
 - Produce course in June: available as modules, as configurable days, as well as two-day course envisaged by Technical Annex

Internal induction course: targets

- Induction courses will include:
 - Grids and their application
 - EGEE Project – context, history, goals, structure
 - EGEE Grid – current middleware, future technology
 - EGEE Project procedures – management, admin, website, where to find standards

Internal induction course: course type 1 EGEE Member Induction (EMI)

The aims of the EMI course are:

- participants understand the EGEE project
- recognise and support its goals
- understand its structure
- understand its technical choices in general terms
- become proficient users of project management tools (relevant for their work)
- become proficient users of basic EGEE facilities (if you don't understand what the users use you can't build or run things for users)

This is what you are currently attending

Internal induction course: course type 2

Grid Aware induction

- Addressed to supporting people from national projects, former FP5 projects and concurrent FP6 projects.
- Participants bear the following characteristics:
 - they are already motivated
 - they already have the concepts but not EGEE's factoring and naming of them
 - they already have skills with some interfaces, tools, etc. but not necessarily EGEE's
 - they require a fast introduction to project structure
 - they require a fast introduction to deployed EGEE service
 - hands-on experience of using EGEE service

AP: Start looking for interested people or groups

Internal induction course: course type 3

New Grid User Induction (NGUI)

- Addressed to users that can exploit EGEE infrastructure at all stages of the project.
- Participants might fall in one or more of the following cases:
 - they now want to join a VO and require EGEE
 - they may be computational experts, e.g. have developed applications
 - they may be computationally inexperienced:
 - e.g. just want to run an application
 - e.g. a clinician interpreting or planning PET scan treatment
 - their motivation needs confirming
 - the concepts need introducing
 - they must experience VO mechanisms, such as Certificates
 - they must experience successful use of applications
 - application developers must also experience successful construction and commissioning of an application to run inside EGEE
 - application users must have had an experience during the course that not only equips them to run their work on the EGEE platform but which is subsequently supported by EGEE.
 - application developers must also have had an experience that carries forward well to real applications developed for EGEE and remains supported

AP: Start looking for interested people or groups

Internal induction course: outline

- Resources available include:
 - 2 day EDG tutorial
 - GENIUS portal
 - Demonstrations
- Tutorial material tested & available by end May:
 - ~1 day on EGEE structure, procedures, goals, context, introduction to Grids, applications & technologies
 - Released to EGEE Intranet in May
 - ~1 day on demonstrations, practicals with both GENIUS and command-line interfaces
 - Suited to new recruits especially; usable for external induction later.
 - Modular, configurable resources will be on EGEE Intranet
 - Trainers across EGEE will be mobilised to deliver these

Application developer course

- A developer is a person who can be external to EGEE or be within EGEE, but who intends to build new applications that:
 - run in the context of EGEE
 - exploit EGEE facilities
 - will become available to other EGEE users.
- The training will assume expert levels of programming in an application domain, but will not necessarily assume prior experience of Grids or Web Service
- Assistance needed from subject experts

AP: Provide information on possible candidates so that courses can be planned.

Training material (external)

- Introductory tutorials on necessary background (OGSI/GT3/etc.)
- Introductory tutorials on EGEE specifics
- Application development tutorials for end-users
- Hands-on tutorials regarding EGEE services use

NA3 execution plan: overview

- Execution plan
 - Main part – overall organisation, responsibilities, procedures, task breakdown etc.
 - Detailed planning – detailing per region task breakdown, staffing, planning, organisation etc..

Deliverables

Month	Deliverable	Item	Partner
M3	DNA3.1.1	Training Plan	
M6	DNA3.2	Initial Training Course Material	
M9	DNA3.1.2	Training Plan update 1	
M9	DNA3.3.1	Training Progress Report	
M15	DNA3.1.3	Training Plan update 2	
M15	DNA3.3.2	Training Progress Report update 1	
M24	DNA3.3.3	Training Progress Report update 2	

AP: Define contributions from partners

Milestones

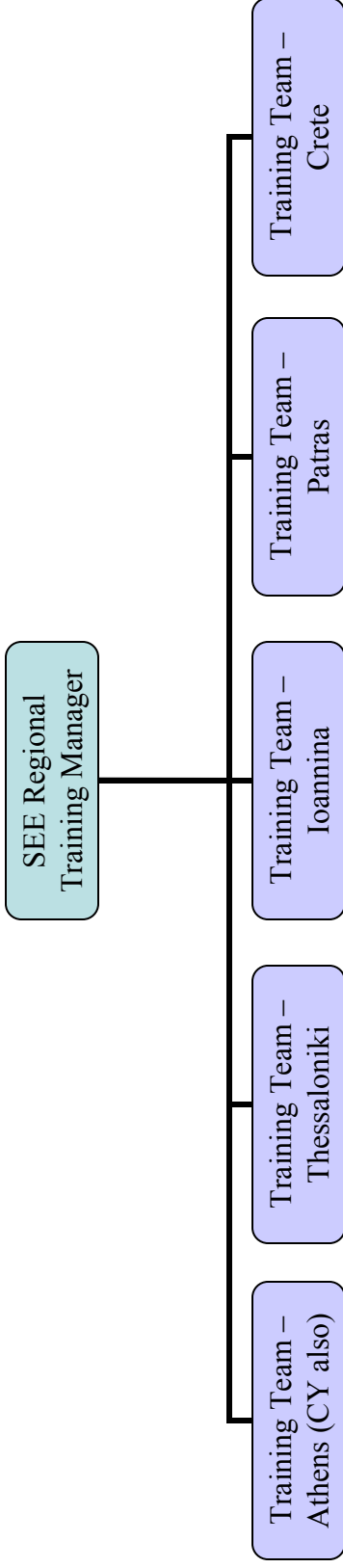
Month	Milestone	Item	Partner
M3	MNA3.1	Planning phase complete – DNA3.1.1 delivered + production of courses begin	
M6	MNA3.2	First user training material and induction course available (including partial translation for SEE regional languages)	
M12	MNA3.3	First external review of User Training and Induction with feedback	
M24	MNA3.4	Second external review of User Training and Induction with feedback	

Greece partners

Participant	Role	PMs (EU funded + unf.)
GRNET	Coordinator (GR+CY)	
UoPiraeus	Support training activities in Athens	
AUEB-1	Support training activities in Athens	
NOA	Support training activities in Athens	
NTUA	Athens training	
CERTH	Thessaloniki training	
UOI	Ioannina training	
UoPatras	Patras training	
UoC	Crete training	
Total effort		

AP: Confirm PMs

Training organization



Training organization

- GRNET will be coordinating the NA3 effort in Greece, with the input from all partners. This includes coordinating partners' input to deliverables + overall coordination of the course planning and delivery in the region; with the strong participation from regional team leaders.
- Regional training teams provide training for their local or wider area users.
- Support training people in Athens, Cyprus and other regions help the training activities.

Identification of personnel & roles

Collaborator name	Contact/email	Institute	Role
Christos Aposkitis	apochr@admin.grnet.gr	GRNET	SEE Regional training manager; Training manager Greece/Cyprus
Ognjen Prnjat	oprnjat@admin.grnet.gr	GRNET	Alternate training manager Greece
Virginia Alizioti	alizio@admin.grnet.gr	GRNET	Training support activities

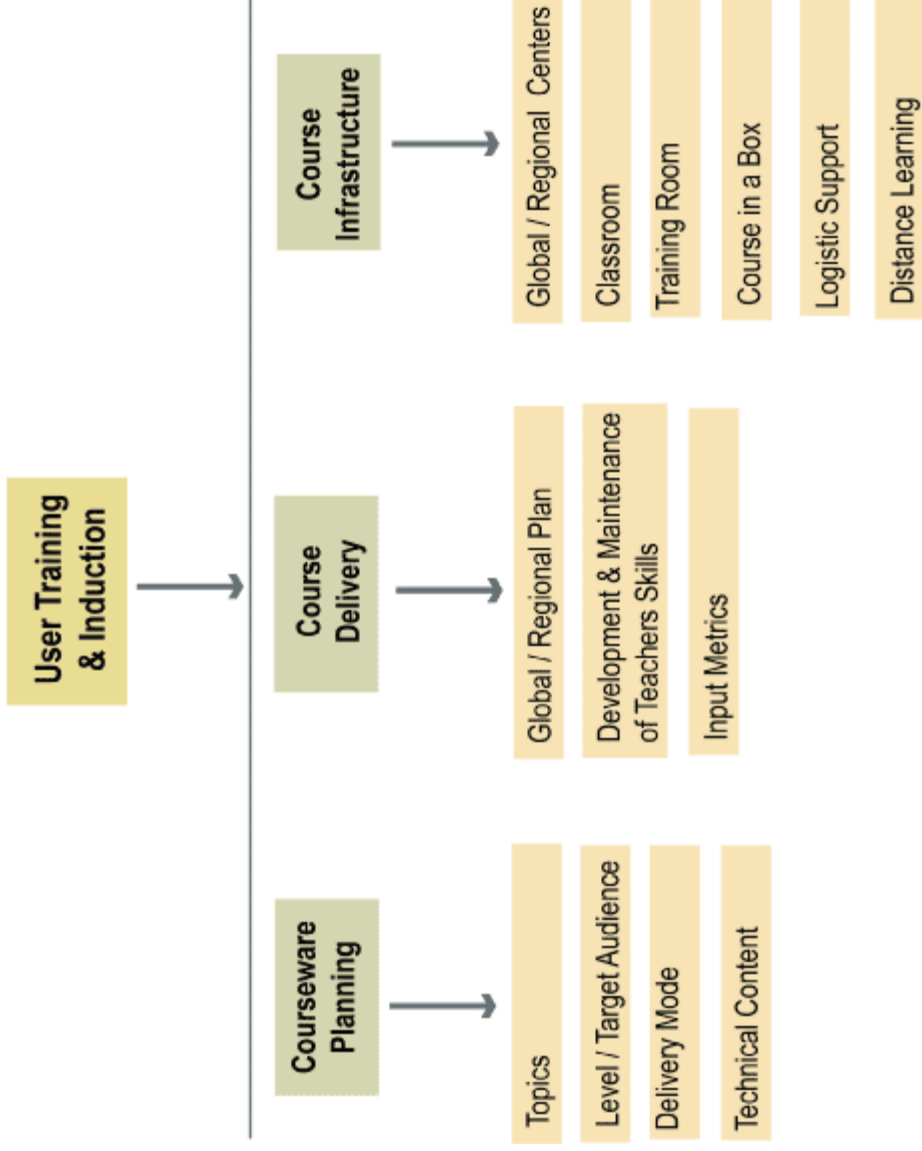
AP: Identify ALL personnel and roles for ALL partners

Courses per region

<u>GREECE and CYPRUS</u>	Course Type			Application tutorials	Development
	Introductory (GAI, NGUI)	Grid	Tutorials		
	Year 1: 3 (Athens, Salonica, Cyprus) Year 2: 6 (Athens, Thessaloniki, Ioannina, Heraklion, Patras, Cyprus)			Year 1: 1 (Athens) Year 2: 2 (Athens, Cyprus)	
Number per Year					
Average Attendance	30			25	
Course Length (days)	1-3			5	
Course Equipment	Web Access			Workstations	
EGEE Staff / course					
non-EGEE experts/course					
Course materials + other costs					

AP: Identify courses planned per region (including costs)

PBS



WBS

- The initial work breakdown structure:
- Deliverable tasks
- Infrastructure setup and course delivery throughout the lifetime of the project
 - The actual training is a bursty activity
 - Setup of User Interface (UI) at training locations – support from local partners
 - Translations (continuous)
 - Training testbed – open issue (currently taken up by UEDIN)
- Demonstrations and hands-on exercises should be well tested and planned in advance

WBS (cont'd)

- Course logistics (a reasonable amount can be charged to participants):
 - venue (Universities are preferred – zero cost)
 - infrastructure (WiFi, DHCP, PC-lab?)
 - coffees and refreshments
 - Course material (printed)
- Thorough recording of all activities and results – this is vital as solid proof of the work performed:
 - Participants list (names, e-mails, institutions, interests)
 - Gender Action Plan
 - Evaluation of courses
 - Maintain mailing lists for people in your region

Activity plan (example)

Task	Task Title	Partner	Start	End	Total effort	Person responsible	Details
NA3.1	Contribute to DNA3.1.1 (Training Plan)		M1	M3			
NA3.1.1	Identification of topics		M1	M3			
NA3.1.2	Identification of target audience		M1	M3			
NA3.1.3	Identification of existing and potential facilities		M1	M3			
NA3.1.4	Identification of provisional training locations and dates		M1	M3			

AP: Finalize activity plan

Activity plan (example)

NA3.10	Course delivery GR+CY	GRNET, UCY	M4	M24		
NA3.10.1	Infrastructure setup		M4	M24		
NA3.10.2	Grid Introduction course delivery		M4	M24		
NA3.10.3	EGEE introduction/ hands-on course delivery		M6	M24		
NA3.10.4	Application development course delivery		M12	M24		

Detailed names

Collaborator name	Institute	Role	Provisional date in M1 to 12	PMs	F/UF

Communications procedures

- eg ee-see-na3@grnet.gr
- project-eu-eg ee-na3@cern.ch
- CERN Document Server (CDS):
<http://agenda.cern.ch/displayLevel.php?fid=41>
- EDMS server (In OTHERS/EGEE/) <https://edms.cern.ch>
- Main NA3 site <http://www.eg ee.nesc.ac.uk>

Action points

- AP: Confirm partners' PMs
- Start looking for possible users or groups that may be interested in attending a course
- For ALL partners:
 - Identify ALL personnel (names!) and roles
 - Identify courses planned per region (including costs)
 - Finalize activity plan
 - But keep activities coarse-grained
 - Effort:
 - Real PMs/partner needed
 - Real people needed
- **Deadline execution plan draft: 10th June**