



Open Science Grid

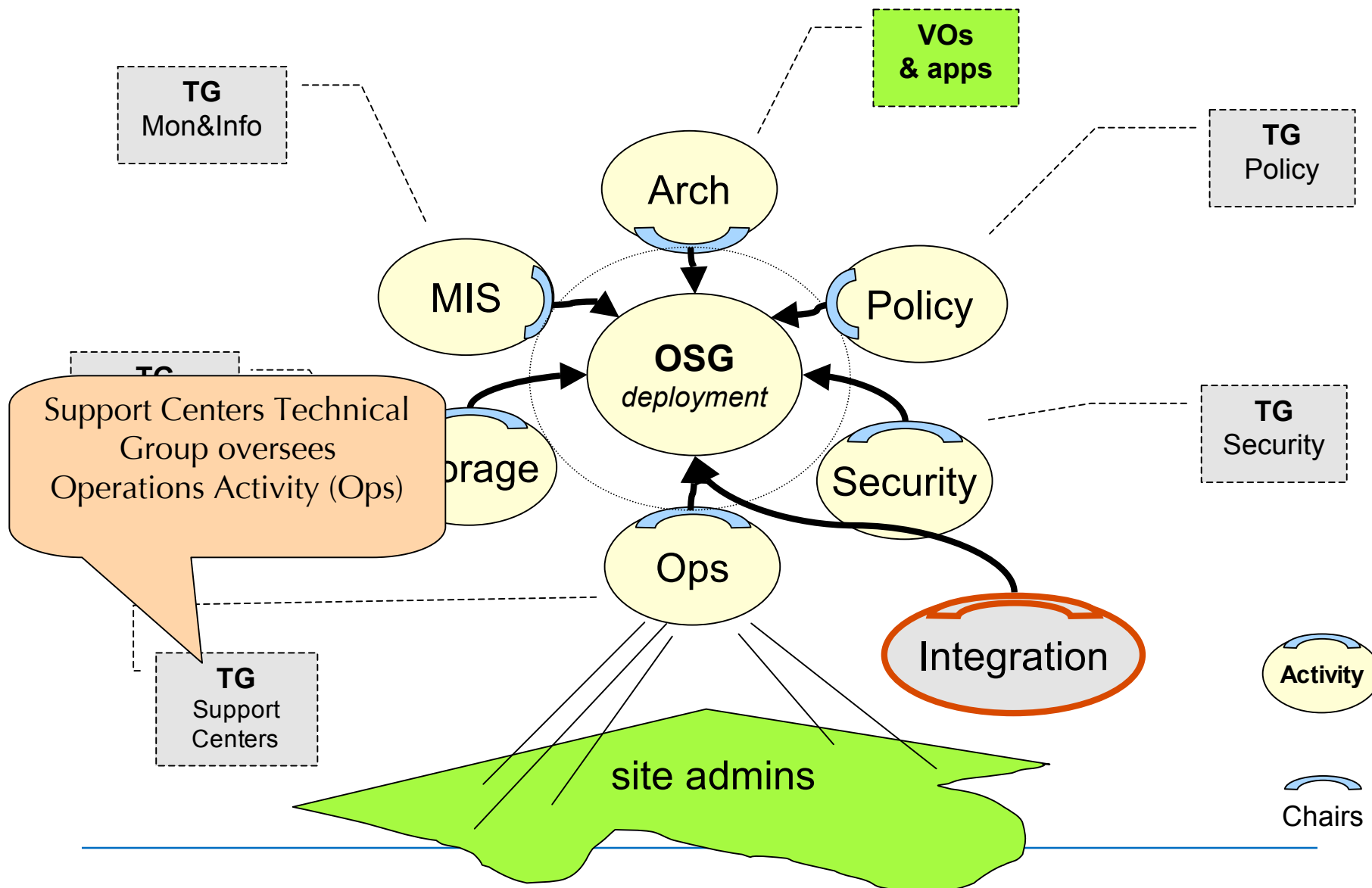
Grid Operations

Leigh Grundhoefer, Indiana University

representing the Open Science Grid Consortium

www.opensciencegrid.org

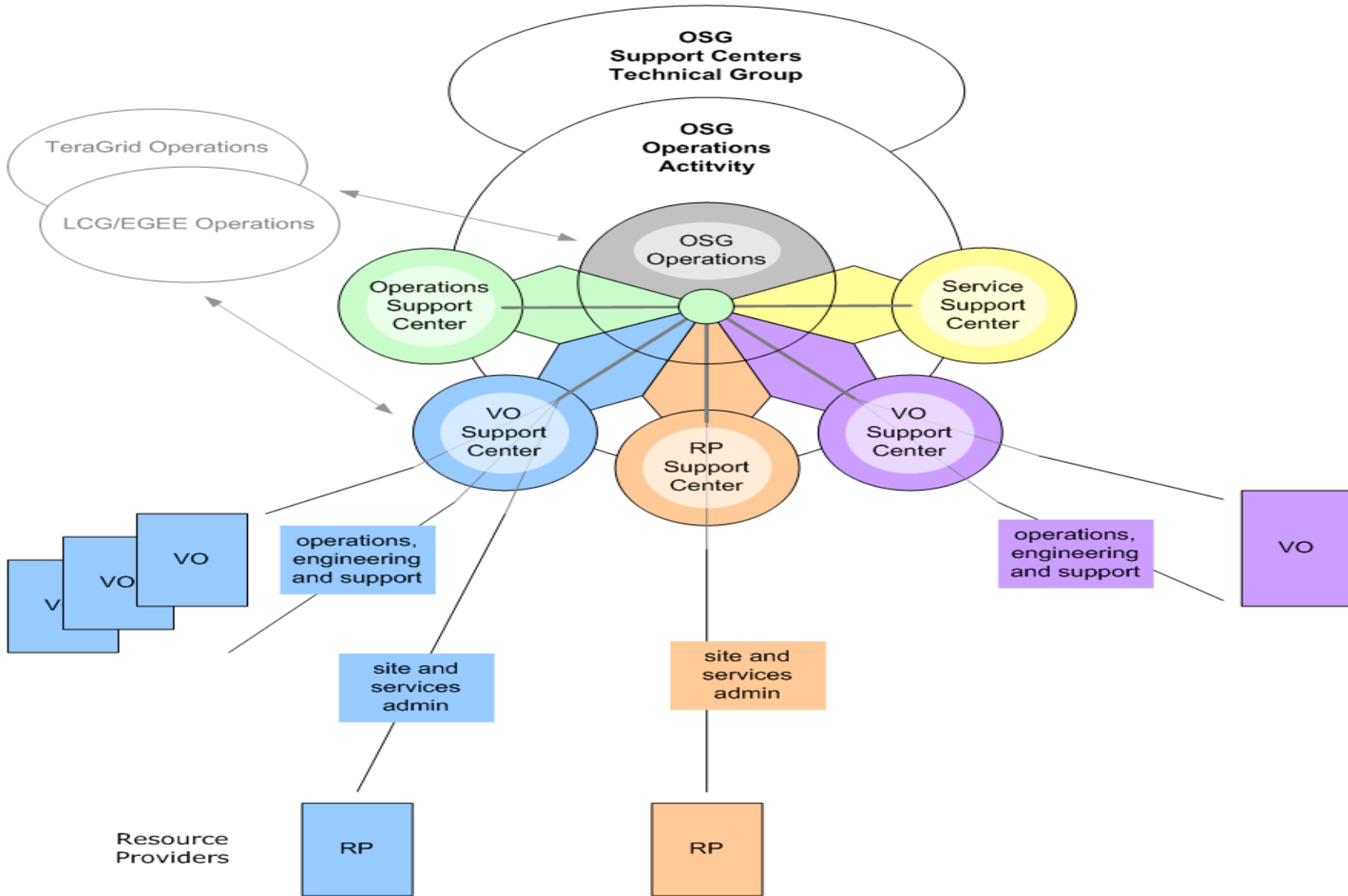
OSG deployment landscape



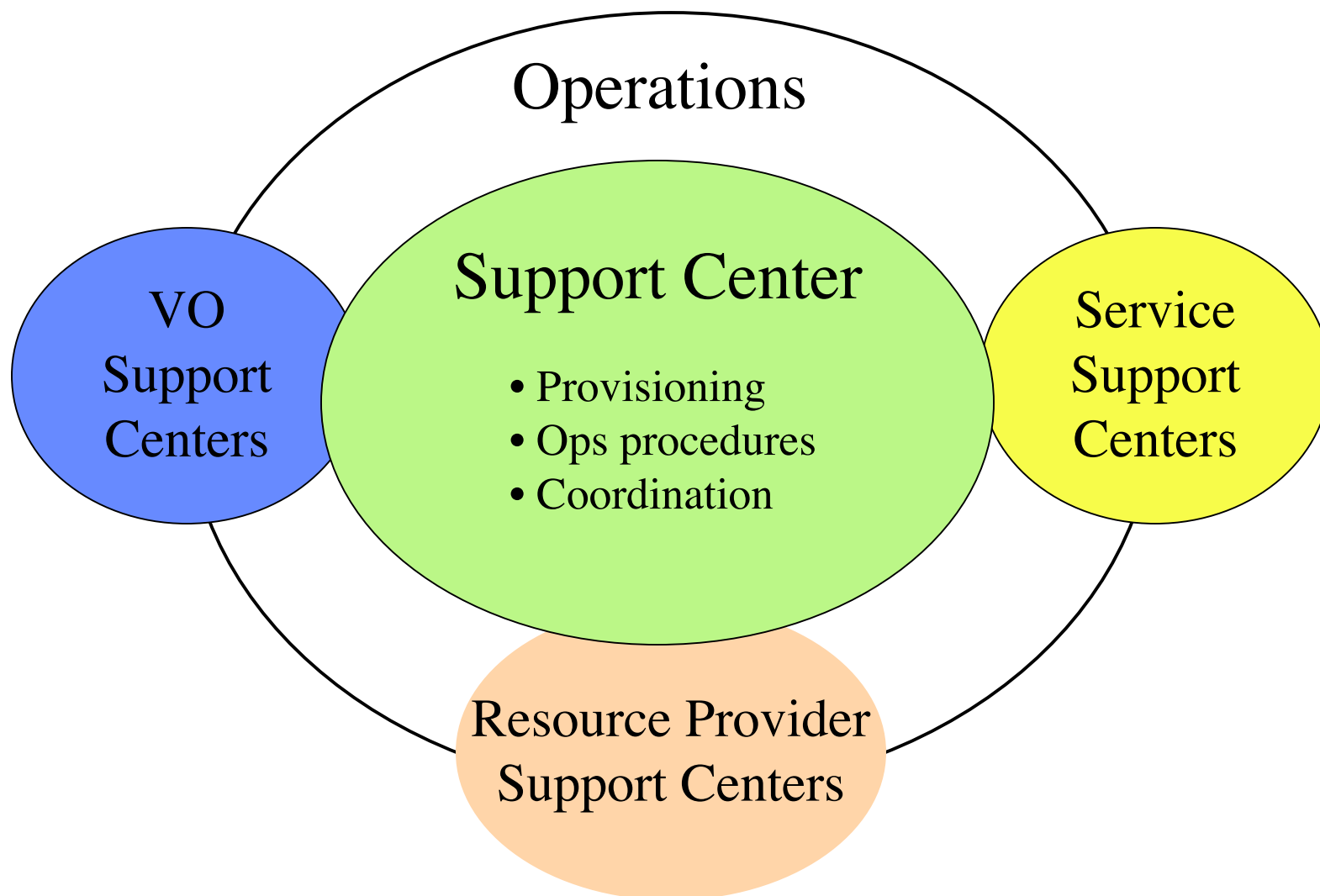
Operations Activity

- Implements Operations Model
- Runs the grid-wide services including provisioning and installation of middleware and operational support for those services, resource providers and VO's running on OSG.
- All the support centers hosting services and providing VO and end-user support for OSG are participants in this activity.
- Applies Users and Service Agreements
- Provides a repository for collected registrations and agreements of participating organizations (just getting started)

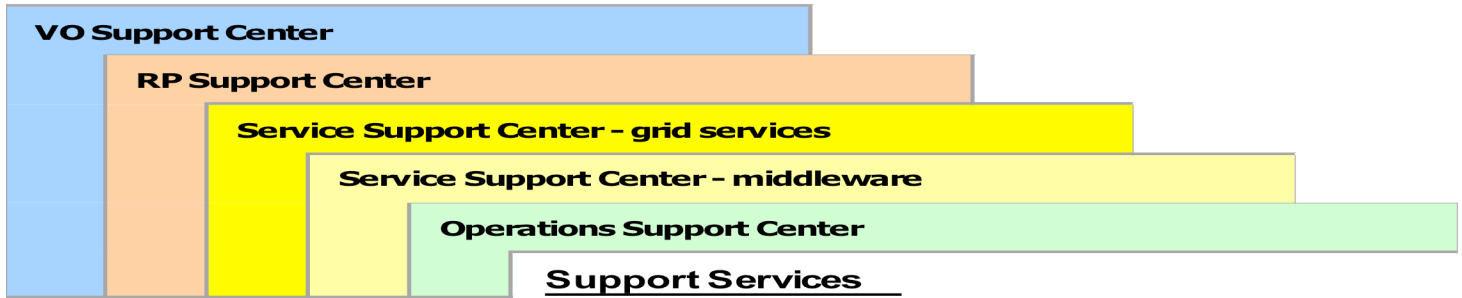
Operations Relationships



Grid Operations Center



OSG Operations - Services and Providers



Support Services					
Service Desk					
VO	RP	SSG	SSM	OSC	facilitate and support communications
VO	RP			OSC	coordinate and track problems and security incidents
VO	RP			OSC	coordinate and track requests for assistance
VO	RP	SSG	SSM	OSC	respond to problems, security incidents, and requests for assistance
VO	RP	SSG		OSC	publish status, activity, accounting, and problem management reports
VO	RP			OSC	maintain a repository of support, process, and policy information
				OSC	schedule and coordinate grid service and middleware changes
VO	RP	SSG			monitor the status of grid resources
VO	RP				monitor policy compliance

Engineering					
			SSM	OSC	maintain grid-controlled software packages and cache
			SSM	OSC	provide common grid software not supported through VDT
			SSM	OSC	verify software compatibility
VO	RP	SSG	SSM	OSC	provision releases of OSG middleware
VO	RP			OSC	provide site installation and configuration support
VO			SSM	OSC	provide ease-of-installation tools
			SSM	OSC	develop instructions on how to plug things together
		SSG		OSC	troubleshoot grid service failures
VO				OSC	troubleshoot application failures
		SSG		OSC	provide and maintain common grid services
VO		SSG	SSM	OSC	provide development guidance and assistance
VO					provide specialized services for VO's and applications
VO		SSG		OSC	create APIs to information resources
VO			SSM	OSC	liaison middleware and application developers

Infrastructure					
				OSC	trouble ticketing system and interface among systems
				OSC	monitoring tools development and provisioning
		SSG			accounting services provisioning
		SSG			discovery services provisioning
		SSG			identity services
		SSG			grid information index

Support Services

- Coordinates and Tracks:
 - problems for service providers
 - Security incidents
 - requests for assistance
- Monitor the status of resources and services
- Publish activity and status of resources and services
- Schedule grid service and middleware changes
- Monitor policy compliance

Engineering

- Maintained grid-controlled software packages and cache
- Provide common grid software support through VDT
- Verify software compatibilities
- Provision releases of the OSG middleware and services
- Troubleshoot service failures
- Deployment guidance and assistance
- liason to other service support centers

Infrastructure

- Trouble Ticketing system and interface
- Monitoring tools development and maintenance
- Accounting services
- Discovery services
- Identity services
- Grid information index
- Grid Catalog
- VO-level services for monitoring services
- Knowledge base
- Mailing Lists
- Formal and collaborative web information repositories



Participating Organizations

- US CMS Tier 1 Support Center
- US Atlas Tier 1 Support Center
- ESnet DOEGrids CA services
- VDT at UW services
- FermiLab Support Center
- Indiana University Global NOC
- iVDGL Grid Operations Center
- Grace VO
- Glow VO

Provisioning Tasks

- Set up the pre-release candidates for production installation tests
 - Add version control to production release
 - Deploy and validate auxiliary services
 - Adjust middleware configuration setup
 - Pre-release testing of production installation
 - Pre-release test of services
 - Full documentation preparation
 - Installation Manuals
 - Releases Notes, Change Logs, Patches, Upgrades
 - Description of the services provided for the release and access information
-

Interaction with LCG

- OSG has flat naming model in that almost everything is a Support Center (SC), so SC comes in different sizes.
- At December Operations Workshop we discussed interaction with LCG and Teragrid.
- It was apparent that LCG Operations will have interaction with OSG Operations and also both ATLAS and CMS Tier1 centers in US. Each are somewhat equivalent to a ROC, but details and terminology are different than LCG because OSG Consortium is organized quite different than LCG.