



Enabling Grids for  
E-science in Europe

[www.eu-egee.org](http://www.eu-egee.org)

*Cork meeting, 19-22 April 2004*

# SA2 Execution Plan for the first year

**Jean-Paul Gautier**  
SA2 manager



# Contents

- Organisation.
- Issues related to other activities.
- SA2 Milestones/Deliverable.
- SA2 Work Breakdown Structure.
- Initial risks assessment.
- Next steps.



# Groups involved an key individuals

Collaborator name	Partner	Function	FTE	F or UF	Total PM
Jean-Paul Gautier	CNRS	SA2 Manager	1	UF	12
Mathieu Goutelle	CNRS		1	F	12
Afrodite Sevasti	Grnet		0,25	UF	3
Sergei Teryaev	RRC KI		1	UF	12
X	RRC KI		1	F	12
<b>Total effort</b>			4,25		51
<b>Total from the TA</b>			4,25		51

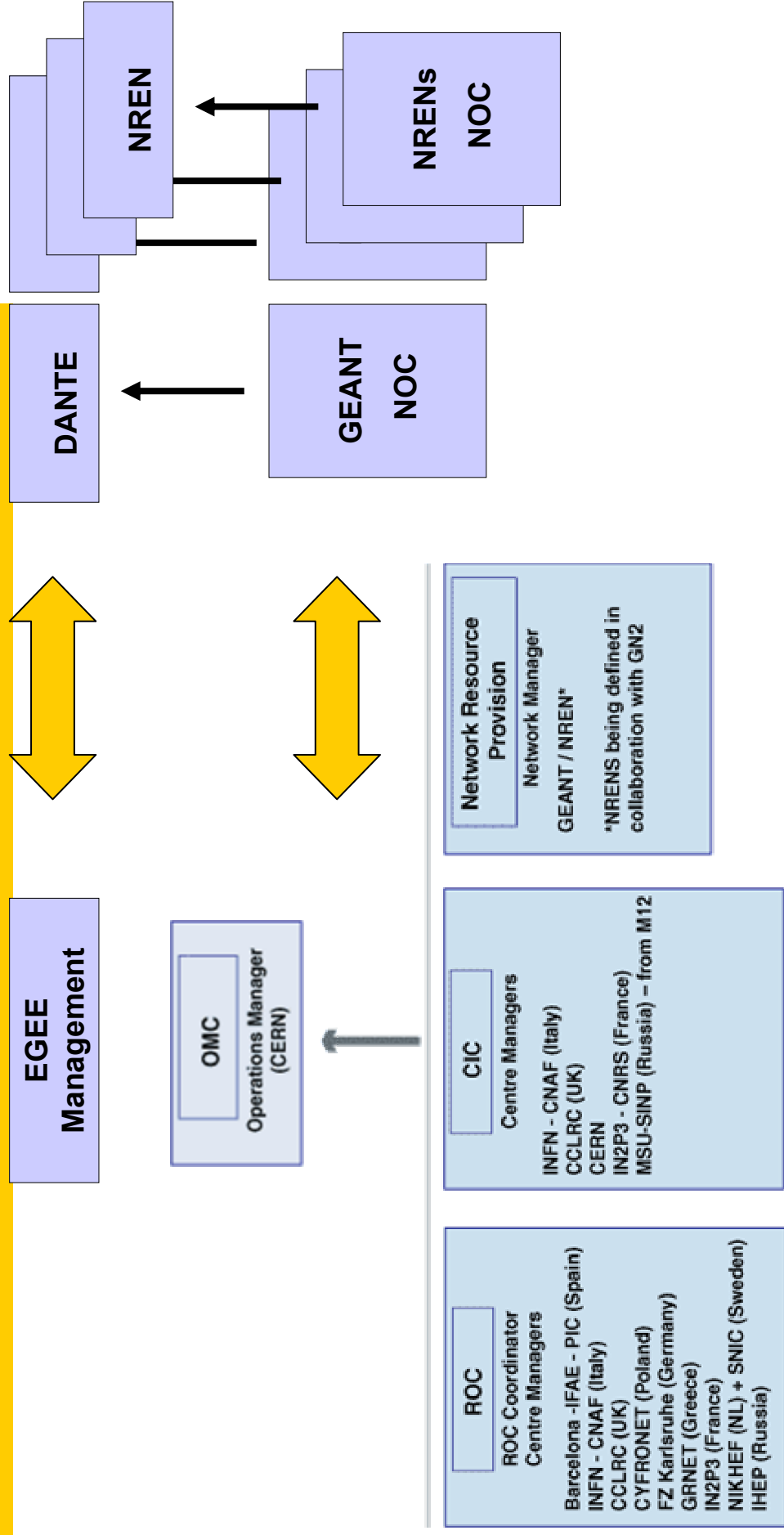
# Milestones and deliverables

Project Month	Deliverable or Milestone	Item
M3	<b>Milestone</b> MSA2.1	First meeting of EGEE-GEANT/NRENS Liaison Board
M6	<b>Deliverable</b> DSA2.1	Survey of pilot application requirements on networks, initial SLRs and service classes.
M9	<b>Milestone</b> MSA2.2	Initial requirements aggregation model, specification of services as SLSs on the networks,
M12	<b>Milestone</b> MSA2.3	Operational interface between EGEE and GEANT/NRENS.
M12	<b>Deliverable</b> DSA2.2	Institution of SLAs and appropriate policies.
M24	<b>Deliverable</b> DSA2.3	Revised SLAs and policies.

# Relations with NAX

- **NA1: Management**
- **NA2: Dissemination and Outreach**
- **NA3: User Training and Education**
- **NA4: Application Identification and Support**
  - Collection of application network requirements
  - Definition of SLS (Service Level Specifications)
  - Definition of SLAs (Service Level Agreement)
  - Follow-up of SLA adherence
- **NA5: Policy and International Cooperation**

# Relations with SA1



Define interactions and operational model between GOCs and NOCs  
 ( Procedures, Trouble Ticketing, Escalations, SLAs...)

# WBS 1/3 – Product Tasks

Task	Task Title	S	E	Effort	Explanation
<b>TSA2.1</b>	<b>Provide MSA2.1 milestone</b>	<b>1</b>	<b>3</b>	<b>1,00</b>	MSA2.1: First meeting of EGEE-GEANT/NRENS Liaison Board
TSA2.2.1	Organisation	1	2	0,70	
TSA2.2.2	Meeting	3	3	0,30	
<b>TSA2.2</b>	<b>Provide DSA2.1 deliverable</b>	<b>1</b>	<b>6</b>	<b>11,00</b>	DSA2.1: Survey of pilot application requirements on networks, initial SLRs and service classes.
TSA2.2.1	SLR definition	1	2	2,00	
TSA2.2.2	Gathering of Application requirements (NA4 using SLR)	2	5	5,00	
TSA2.2.3	Definiton of service classes	3	5	1,50	
TSA2.2.4	Loopback with JRA4	4	5	1,50	
TSA2.2.5	Write/review deliverable	5	6	1,00	
<b>TSA2.3</b>	<b>Provide MSA2.2 milestone</b>	<b>3</b>	<b>9</b>	<b>5,50</b>	MSA2.2: Initial requirements aggregation model, specification of services as SLSS on the network.
TSA2.3.1	Aggregation modeling	3	4	1,50	
TSA2.3.2	SLS definition	4	8	2,00	
TSA2.3.3	Loopback with JRA4	6	8	1,50	
TSA2.3.4	Validation with GEANT/NRENS	8	9	0,50	

# WBS 2/3 - Product Tasks

Task	Task Title	S	E	Effort	Explanation
<b>TSA2.4</b>	<b>Provide MSA2.3 milestone</b>	<b>3</b>	<b>12</b>	<b>11,00</b>	MSA2.3: Operational interface between EGEE and GEANT/NRENS.
TSA2.4.1	NOC operations survey	3	5	1,50	
TSA2.4.2	TT Systems study (GOC & NOC)	4	5	1,00	
TSA2.4.3	Develop interfaces	6	8	2,00	
TSA2.4.4	setup operational interface	7	12	5,50	
TSA2.4.5	Write/review procedures	11	12	1,00	
<b>TSA2.5</b>	<b>Provide DSA2.4 deliverable</b>	<b>6</b>	<b>12</b>	<b>12,00</b>	DSA2.4: Institution of SLAs and appropriate policies.
TSA2.5.1	SLA / Policies definition	6	10	5,00	
TSA2.5.2	Loopback with JRA4	8	10	3,00	
TSA2.5.3	Formalization by contract between partners (VO / GEANT / NRENS)	10	12	3,00	
TSA2.5.4	Write/review deliverable	11	12	1,00	



# WBS 3/3 - Recurrent Tasks

Task	Task Title	S	E	Effort	Explanation
<b>TSA2.6</b>	<b>Network Services follow-up</b>	<b>1</b>	<b>12</b>	<b>3,50</b>	Gathering of network indicator, checking of SLA adherence
TSA2.6.1	Network provision follow-up	1	12	1,50	
TSA2.6.2	SLA adherence follow-up	10	12	0,50	
TSA2.6.3	Interaction GOC/NOC follow-up	6	12	1,50	
<b>TSA2.7</b>	<b>Management of Liaison with other EU project</b>	<b>1</b>	<b>12</b>	<b>0,85</b>	6net ...
<b>TSA2.8</b>	<b>Management of Liaison with DANTE</b>	<b>1</b>	<b>12</b>	<b>1,00</b>	MoU with GN2
<b>TSA2.9</b>	<b>JRA4 Follow-up</b>	<b>1</b>	<b>12</b>	<b>1,50</b>	Coaching
<b>TSA2.10</b>	<b>Taking part in JRA2</b>	<b>1</b>	<b>12</b>	<b>0,15</b>	
<b>TSA2.11</b>	<b>Review the deliverables from other activities</b>	<b>1</b>	<b>12</b>	<b>1,00</b>	
<b>TSA2.12</b>	<b>SA2 Management</b>	<b>1</b>	<b>12</b>	<b>2,50</b>	(5% of Total)

# WBS – Detailed Efforts 1/4

Task	Task Title	S	E	Effort	CNRS	GRNET	RCC KI
<b>TSA2.1</b>	<b>Provide MSA2.1 milestone</b>	<b>1</b>	<b>3</b>	<b>1,00</b>	<b>1,00</b>		
TSA2.2.1	Organisation	1	2	0,70	0,70		
TSA2.2.2	Meeting	3	3	0,30	0,30		
<b>TSA2.2</b>	<b>Provide DSA2.1 deliverable</b>	<b>1</b>	<b>6</b>	<b>11,00</b>	<b>3,25</b>		<b>7,75</b>
TSA2.2.1	SLR definition	1	2	2,00	1,00		1,00
TSA2.2.2	Gathering of Application requirements (NA4 using SLR)	2	5	5,00	1,00		4,00
TSA2.2.3	Definiton of service classes	3	5	1,50	0,50		1,00
TSA2.2.4	Loopback with JRA4	4	5	1,50	0,5		1,00
TSA2.2.5	Write/review deliverable	5	6	1,00	0,25		0,75

# WBS – Detailed Efforts 2/4

Task	Task Title	S	E	Effort	CNRS	GRNET	RCC KI
<b>TSA2.3</b>	<b>Provide MSA2.2 milestone</b>	<b>3</b>	<b>9</b>	<b>5,50</b>	<b>2,55</b>	<b>0,40</b>	<b>2,55</b>
TSA2.3.1	Aggregation modeling	3	4	1,50	0,50	0,10	0,90
TSA2.3.2	SLS definition	4	8	2,00	1,00	0,10	0,90
TSA2.3.3	Loopback with JRA4	6	8	1,50	0,85		0,65
TSA2.3.4	Validation with GEANT/NRENs	8	9	0,50	0,20	0,20	0,10
<b>TSA2.4</b>	<b>Provide MSA2.3 milestone</b>	<b>3</b>	<b>12</b>	<b>11,00</b>	<b>3,25</b>	<b>0,40</b>	<b>7,35</b>
TSA2.4.1	NOC operations survey	3	5	1,50	0,5		1,00
TSA2.4.2	TT Systems study (GOC & NOC)	4	5	1,00	0,25		0,75
TSA2.4.3	Develop interfaces	6	8	2,00	0,30	0,20	1,50
TSA2.4.4	setup operational interface	7	12	5,50	2,00		3,50
TSA2.4.5	Write/review procedures	11	12	1,00	0,20	0,20	0,60

# WBS – Detailed Efforts 3/4

Task	Task Title	S	E	Effort	CNRS	GRNET	RCC KI
<b>TSA2.5</b>	<b>Provide DSA2.4 deliverable</b>	<b>6</b>	<b>12</b>	<b>12,00</b>	<b>4,65</b>	<b>1,75</b>	<b>5,60</b>
TSA2.5.1	SLA / Policies definition	6	10	5,00	1,00	1,00	3,00
TSA2.5.2	Loopback with JRA4	8	10	3,00	1,40	0,10	1,50
TSA2.5.3	Formalization by contract between partners (VO / GEANT / NRENS)	10	12	3,00	1,75	0,25	1,00
TSA2.5.4	Write/review deliverable	11	12	1,00	0,50	0,40	0,10

# WBS – Detailed Efforts 4/4

Task	Task Title	S	E	Effort	CNRS	GRNET	RCC KI
TSA2.6	Network Services follow-up	1	12	3,50	2,30	0,45	0,75
TSA2.6.1	Network provision follow-up	1	12	1,50	1,00	0,25	0,25
TSA2.6.2	SLA adherence follow-up	10	12	0,50	0,30	0,10	0,10
TSA2.6.3	Interaction GOC/NOC follow-up	6	12	1,50	1,00	0,10	0,40
TSA2.7	Management of Liaison with other EU project	1	12	0,85	0,85		
TSA2.8	Management of Liaison with DANTE	1	12	1,00	1,00		
TSA2.9	JRA4 Follow-up	1	12	1,50	1,50		
TSA2.10	Taking part in JRA2	1	12	0,15	0,15		
TSA2.11	Review the deliverables from other activities	1	12	1,00	1,00		
TSA2.12	SA2 Management	1	12	2,50	2,50		

51	24	3	24
----	----	---	----

# Risk analysis

Risk title	Classes	Level	Description
Hiring	M	2	Difficulties to hire people (latency + adequate profile)
Human	M	3	Activity resources dispersion. Weak level of distributed project management/ information exchange/ resources & efforts collaboration between participants within Russia and internationally
Requirements	T	2	Gathering of adequate application network requirements. Collected application requirements currently are restricted/ limited by an existing network services, mostly best effort IP-based
Trouble ticket	S	2	Harmonisation of trouble ticketing systems
Terminology	T	1	Ununified terminology (definitions) for network and grid services.

# Risk analysis

Risk title	Class	Level	Description
SLA	P	3	Homoneigeinisation of Network SLA: Network SLA for grid is not network SLA for NREN. Failure to agree SLA and then mutually agreed policies because of different aims of parties involved, esp. commercialized zones. Legal support of the contracts
SLA Monitoring	T	3	Monitoring: Difficulty to recognize and resolve a particular fault of exact participant/node in the network service providers chain.
QoS	S	2	Low level of network performance, esp. in Russia. Lack of GUARANTEED services/ quality
Techno	T	2	Failure to receive from the underlying network infrastructure (GEANT, NRENs, campus/last-mile parts of the end-to-end path) the services needed as technically and operationally specified in SA2

## Highest priority steps

- Hiring people : RCC KI.
- Finalize the WBS to have a resource planning.
- Customize the tasks & subtasks.
- Start dialog with others activities, mainly NA4 & SA1
  - Identify mechanism by which requirements will be gathered.
  - Identify existing SLA templates and select/produce one for EGEE (link to JRA2)