

SPACI Activities on IA64

- Easy LCG installation, configuration and patches on IA64
- Supported Components: all LCG components
- Documentation, Download, Support, News, etc.
- Test of SPACI's installation procedures on HP XC6000
- Test on HP-RX2600 nodes with SLC 3.0.4
- Support for Italian VOs (INFN GRID)
- User support within Italian Central Management Team for IA64 community
- Bugs Report (GridICE on IA64, etc.)

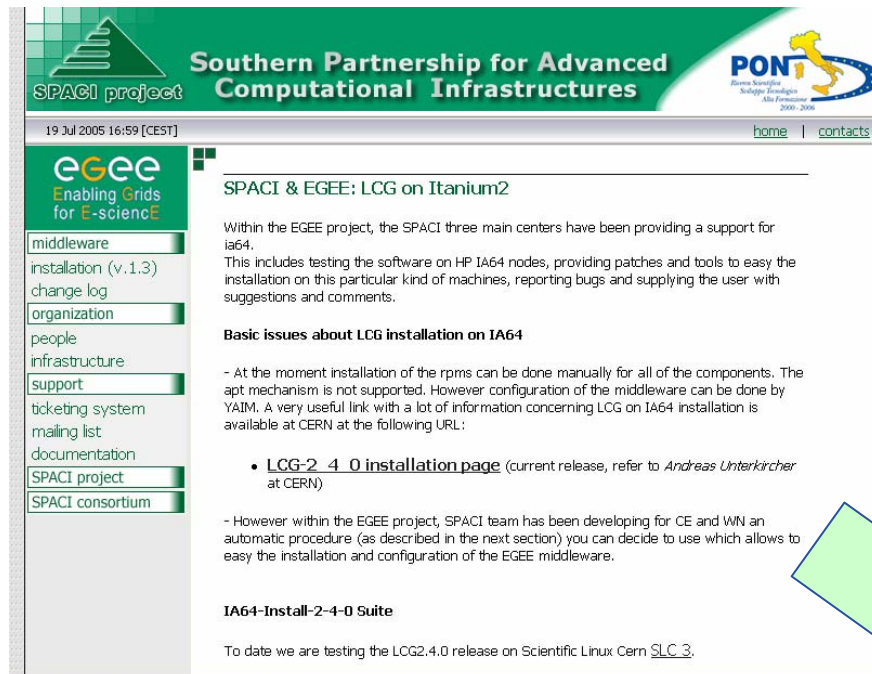


RX2600

- Automatic Procedure for installation, configuration and patches of LCG on IA64 nodes
- Supported Components:
 - LCG2.4.0: CE, WN, UI, SE, MON, RB e BDII
 - LCG2.6.0: CE, WN, SE, MON (the other will be soon available)
- Procedures based on bash scripts
- Web site for Automatic Procedure on IA64 (www.spaci.it/egEE)
 - Info, Download, Support, News, etc..
- SPACI Repository (*Cern mirror*)

XC6000

- We are testing the automatic procedure on XC6000 (IA64 Itanium2 biprocessor nodes), considering XC System Software.



Southern Partnership for Advanced Computational Infrastructures

SPACI project

19 Jul 2005 16:59 [CEST]

home | contacts

EGEE
Enabling Grids for E-science

- middleware
- installation (v.1.3)
- change log
- organization
- people
- infrastructure
- support
- ticketing system
- mailing list
- documentation
- SPACI project
- SPACI consortium

SPACI & EGEE: LCG on Itanium2

Within the EGEE project, the SPACI three main centers have been providing a support for ia64. This includes testing the software on HP IA64 nodes, providing patches and tools to ease the installation on this particular kind of machines, reporting bugs and supplying the user with suggestions and comments.

Basic issues about LCG installation on IA64

- At the moment installation of the rpms can be done manually for all of the components. The apt mechanism is not supported. However configuration of the middleware can be done by YAIM. A very useful link with a lot of information concerning LCG on IA64 installation is available at CERN at the following URL:

- [LCG-2_4_0 installation page](#) (current release, refer to *Andreas Unterkircher* at CERN)

- However within the EGEE project, SPACI team has been developing for CE and WN an automatic procedure (as described in the next section) you can decide to use which allows to ease the installation and configuration of the EGEE middleware.

IA64-Install-2-4-0 Suite

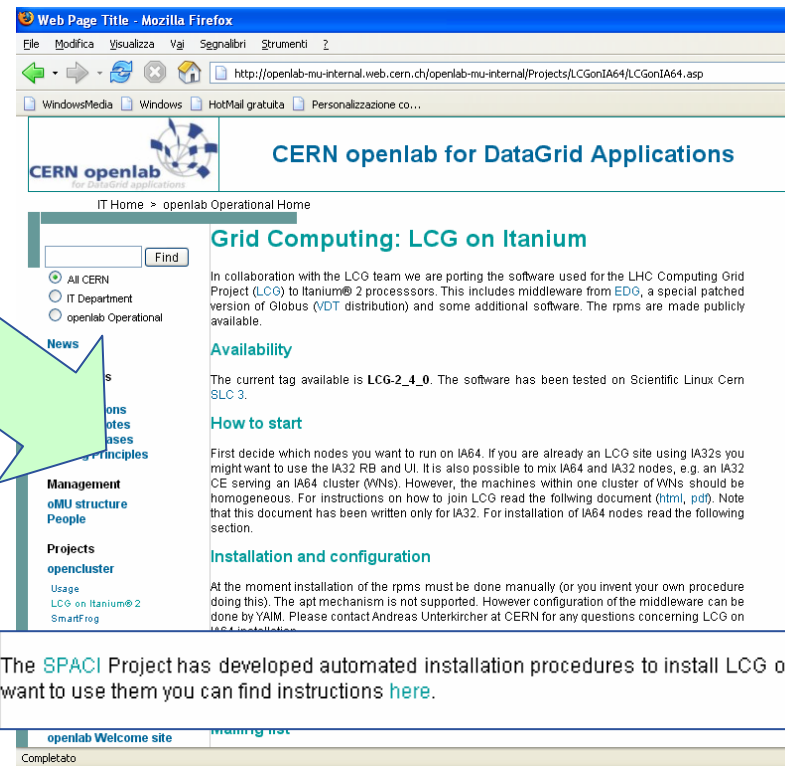
To date we are testing the LCG2.4.0 release on Scientific Linux Cern [SLC 3](#).

LCG Support on IA64 (websites)

SPACI Support: www.spaci.it/egee

SA1 Italy: <http://grid-it.cnaf.infn.it/?sa1italy>

CERN: <http://openlab-mu-internal.web.cern.ch/>



Web Page Title - Mozilla Firefox

File Modifica Visualizza Vai Segnalibri Strumenti ?

<http://openlab-mu-internal.web.cern.ch/openlab-mu-internal/Projects/LCGonIA64/LCGonIA64.asp>

WindowsMedia Windows HotMail gratuita Personalizzazione co...

CERN openlab
for DataGrid applications

CERN openlab for DataGrid Applications

IT Home > openlab Operational Home

Find

- All CERN
- IT Department
- openlab Operational

News

Grid Computing: LCG on Itanium

In collaboration with the LCG team we are porting the software used for the LHC Computing Grid Project (LCG) to Itanium® 2 processors. This includes middleware from EDG, a special patched version of Globus (VDT distribution) and some additional software. The rpms are made publicly available.

Availability

The current tag available is LCG-2_4_0. The software has been tested on Scientific Linux Cern SLC 3.

How to start

First decide which nodes you want to run on IA64. If you are already an LCG site using IA32s you might want to use the IA32 RB and UI. It is also possible to mix IA64 and IA32 nodes, e.g. an IA32 CE serving an IA64 cluster (WNs). However, the machines within one cluster of WNs should be homogeneous. For instructions on how to join LCG read the following document ([html](#), [pdf](#)). Note that this document has been written only for IA32. For installation of IA64 nodes read the following section.

Installation and configuration

At the moment installation of the rpms must be done manually (or you invent your own procedure doing this). The apt mechanism is not supported. However configuration of the middleware can be done by YAIM. Please contact Andreas Unterkircher at CERN for any questions concerning LCG on IA64 installation.

Management

- oMU structure
- People

Projects

- opencluster
- Usage
- LCG on Itanium® 2
- SmartFrog

openlab Welcome site

Completato

LCG Support on IA64 (mailing lists)

SPACI Support: grid-prod@sara.unile.it

Italian Central Management Team

Mailing list Cern: lcg-ia64-support



The SPACI Project has developed automated installation procedures to install LCG on IA64. If you want to use them you can find instructions [here](#).

FARM

Two sites on GOCDB

1 CE also run on IA64 SLC 3.0.4 (RX2600)

7 WNs, running on IA64 SLC 3.0.4 (RX2600)

1 SE (RX2600)

1 CE, running on IA64 XC System Software

7 WNs , running on IA64 XC System Software

1 SE, running on IA64 XC System Software

SOFTWARE:

LCG 2.6.0 for IA64

VOs supported: (atlas, lhcb, cms, alice,
dteam, all italian VOs)

Ganglia for CE and WNs Monitoring



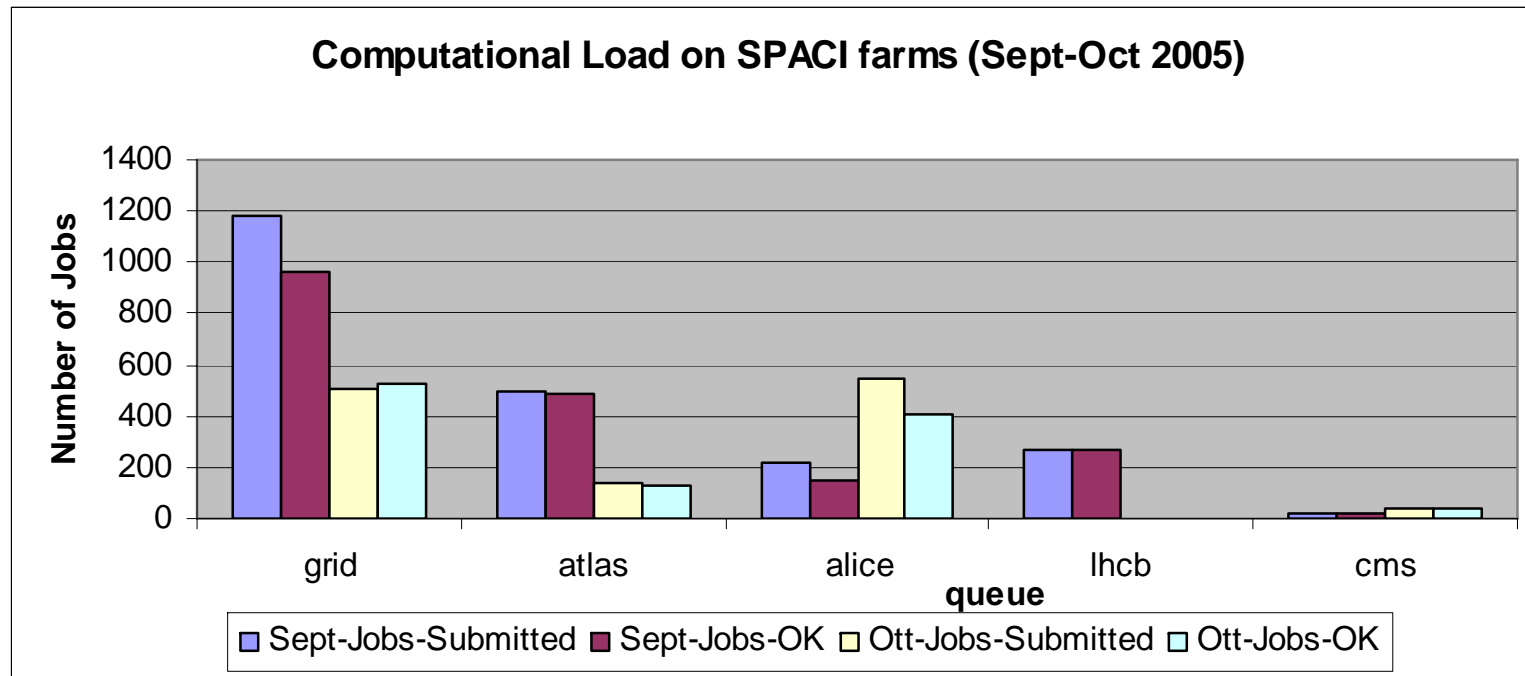
Computational Load “Period September-October 2005”

Submitted Jobs ~ 3500

Jobs Ok: 87% September / 90% October

Jobs Failed Reasons: release bugs SE, storage full for Alice experiments, etc.

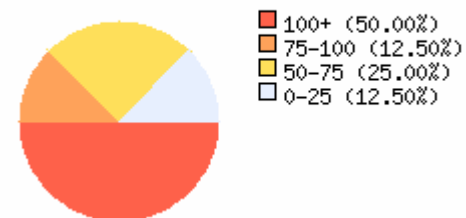
Involved VOs: atlas, cms, alice, lhcb, esr, biomed, ingv, magic, cdf, enea, etc.



To monitor SPACI resources, we additionally provide a web interface to Monitor SPACI resources based on Ganglia.

http://cact2.unile.it/ganglia_egee/

Cluster Load Percentages



Overview of IA64-Farm

