



Enabling Grids for E-science

Patch certification

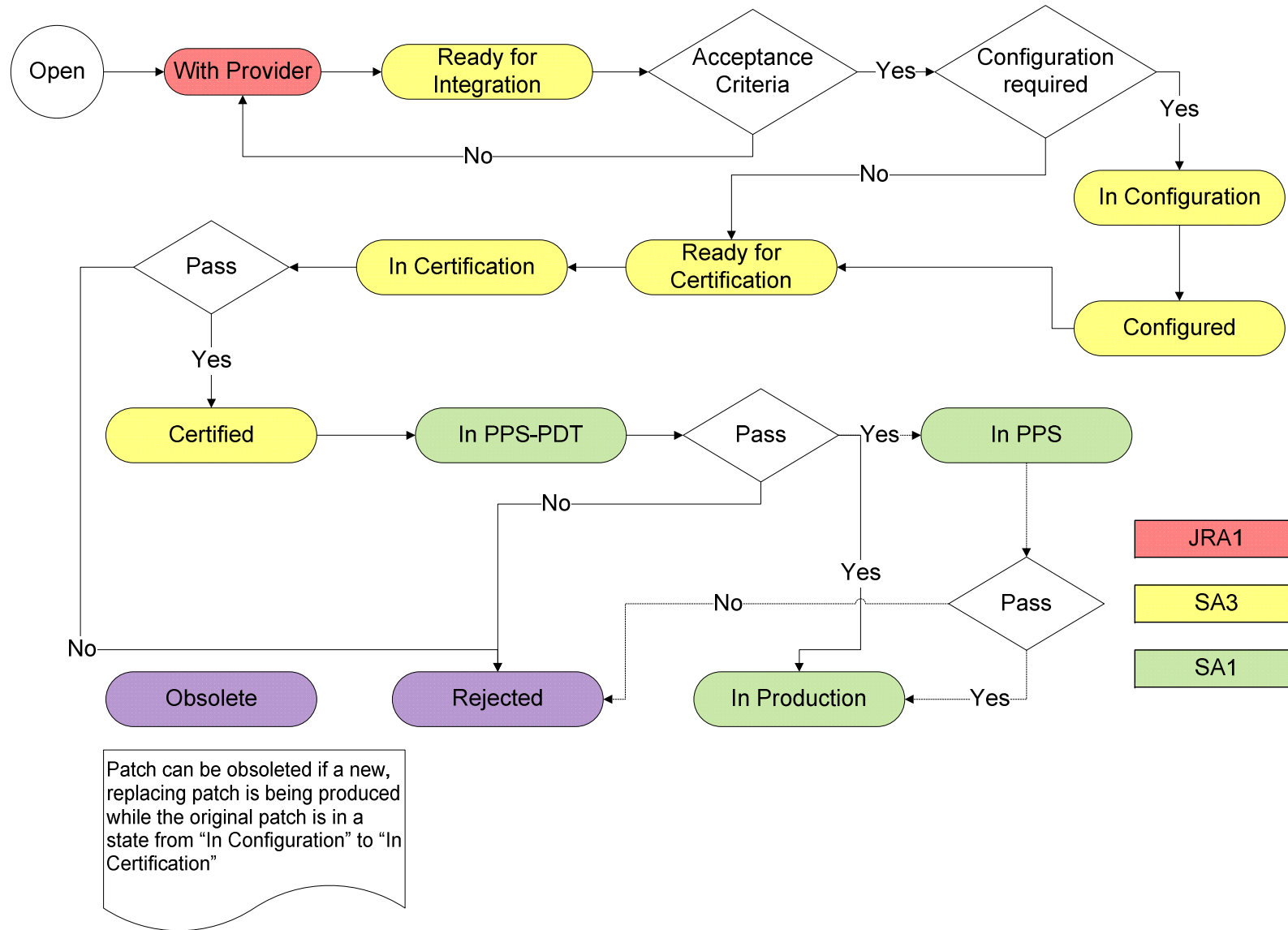
Di Qing
ASGC & CERN

Prague, November 2008

www.eu-egee.org



- **Patch states**
- **Partner expertise**
- **Issues in patch certification**
- **New changes for patch certification**



JRA1
SA3
SA1



Enabling Grids for E-scienceE

Partner Expertise Update

Component	Partners	Node types
Accounting(APEL)	GRNET, TCD,CERN	CE, MON, *_utils
AMGA	UCY,CERN	AMGA_oracle
CREAM CE	GRNET,CERN	CREAMCE, UI
Condor	FOM,IFAE	Condor_utils
dCahce	Desy	dCache
DPM	UOS,CERN	DPM_disk, DPM_oracle, DPM_mysql
Data Management Tools	CERN	UI, WN
FTS	UOS,CERN	FTS, FTA
GFAL	CERN	UI, WN
Info System	GRNET, PIC,STFC,CERN	All services
LCG CE	GRNET,CERN	lcg-CE
LB	CERN	LB, UI
LFC	UOS,CERN	LFC_mysql,LFC_oracle, UI, WN
LSF	CERN	LSF_utils
MDM	HIP	Hydra_mysql, UI,WN
RGMA	GRNET,TCD	MON
SGE	CESGA,FOM	SGE_utils
SCAS	CERN	CE, WN
Torque	GRNET,FOM	Torque_server, Torque_utils, Torque_client
WMS	CERN	WMS
WMS client	CSIC,CERN	UI
VOMS	UOS,CERN	VOMS,UI
YAIM	CERN	All

- **Patches stayed in “Ready for Certification” too long**
 - An old issue still remains, certifier started testing it but forgot to change the status
 - The testing of some patches were delayed
- **Patches certified by multiple certifiers and partners**
 - Coordination problem
 - Communication problem
- **All tests have been done?**
 - Service checklist
 - Some tests are out of date, Gianni is validating them
 - Stress test?
- **Bug fix verification**

- **Patch certification verification**
 - The certification of the patch will be reviewed when it is Certified”
 - Please record everything you have done on Savannah
 - We may ask you to recertify it if the tests have not been done enough
- **Coordination of the testing of a patch**
 - When patch is tested by multiple partners or people
 - One person will be appointed as coordinator for this patch
- **A certification task for each patch**
 - Created with estimated efforts when the patch is assigned
 - Please update task status after you finish the certification

- **Patch cloning**
 - When patch is rejected
 - We prefer to reject the patch and clone it, not to update the patch with fixes
 - Patch cloning tools
 - <https://twiki.cern.ch/twiki/bin/view/EGEE/SavannahCommandLineInterface>
- **Criteria for bugs not to verify**
 - <https://twiki.cern.ch/twiki/bin/view/EGEE/BugNonVerification>
- **Write regression test for bugs**
 - Part of the patch certification process or separate task?



Enabling Grids for E-science

Questions and Suggestions

- **Questions?**
- **Suggestions?**