

Report on the LHC machine
Lyn Evans
DESY
23rd March 2005







First Dipole Installation

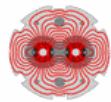








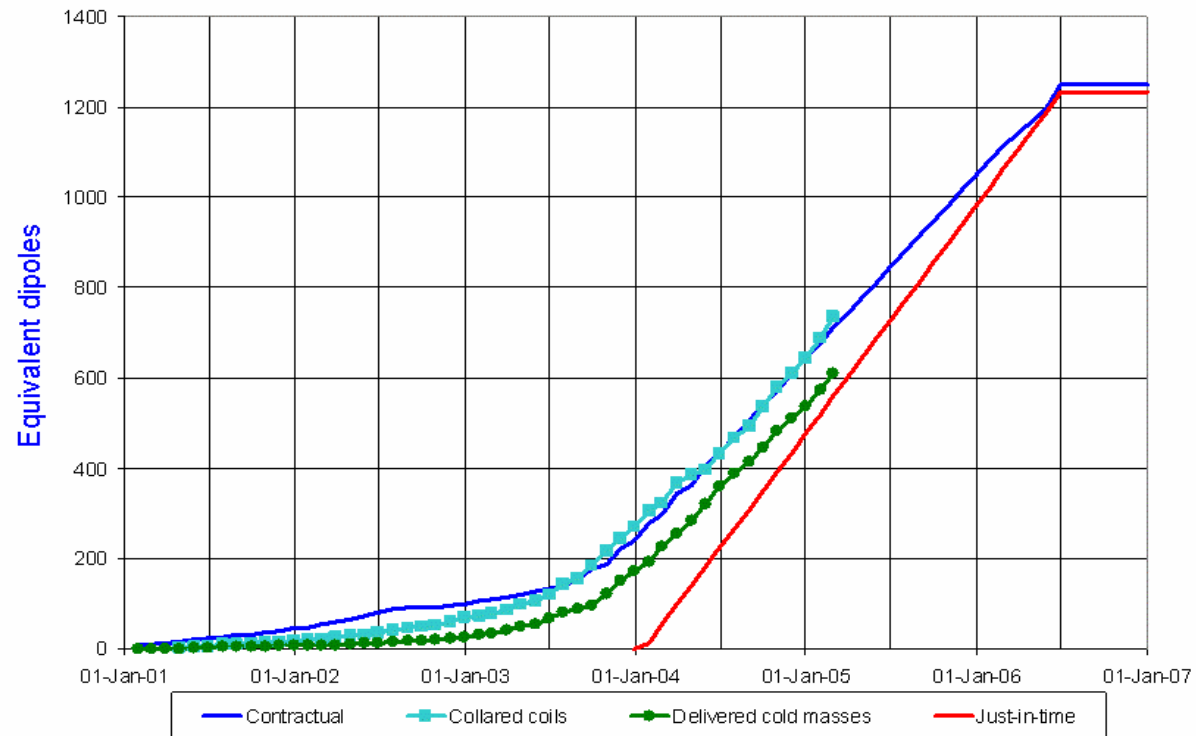
Dipole cold masses



LHC Progress Dashboard



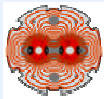
Dipole cold masses



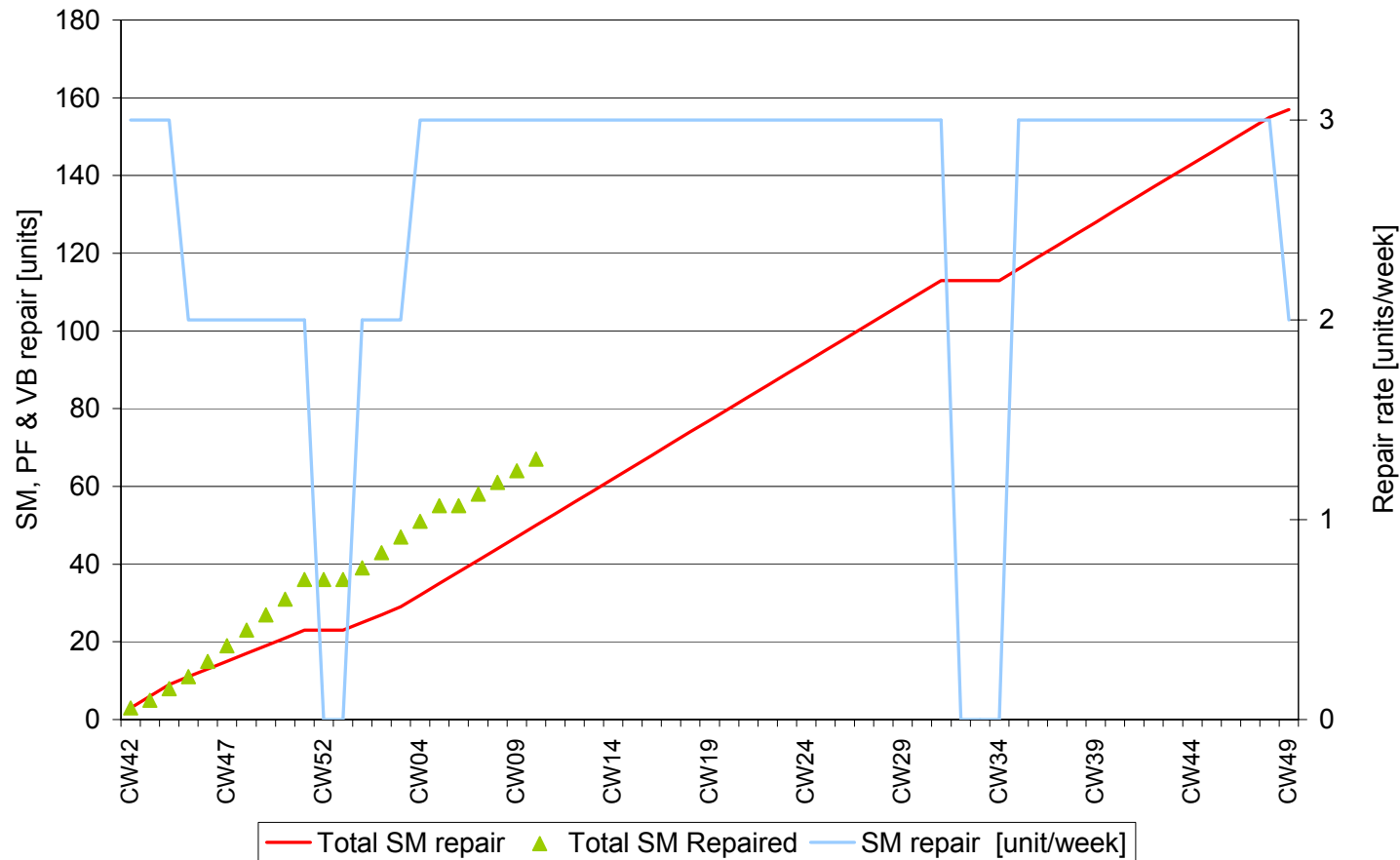
Updated 28 Feb 2005

Data provided by P. Lienard AT-MAS



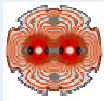


Service module, fixed point and vacuum barrier repair

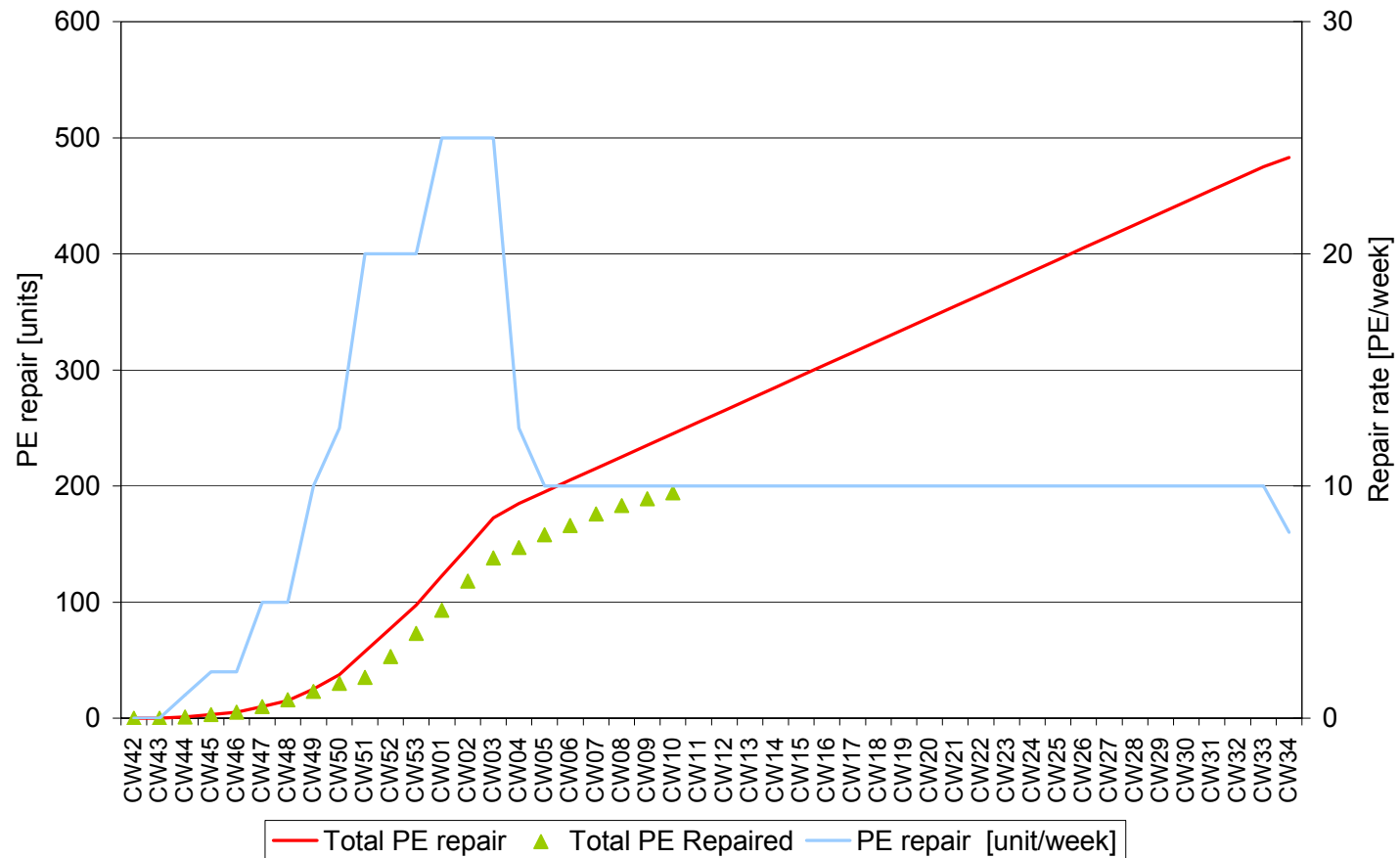


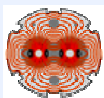






Pipe element repair



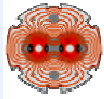


Sector 8-1 installation

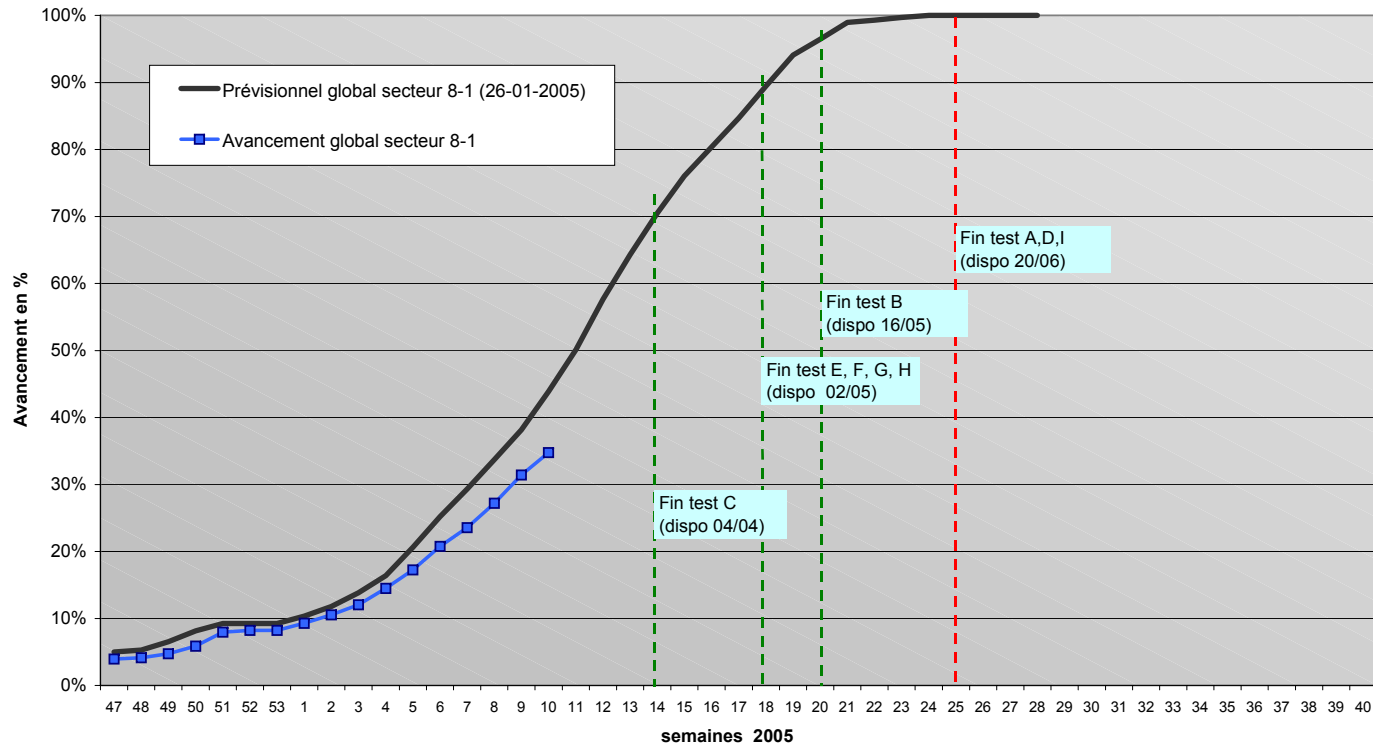


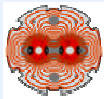
5

AT-ACR/GR

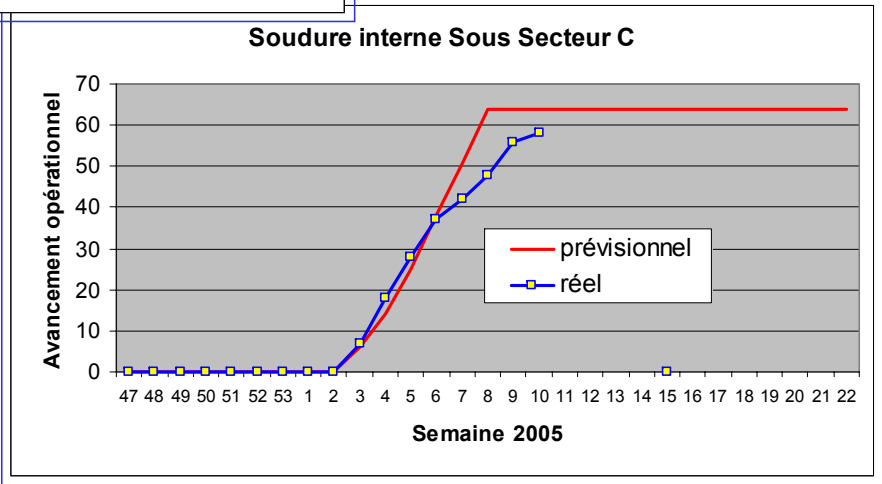
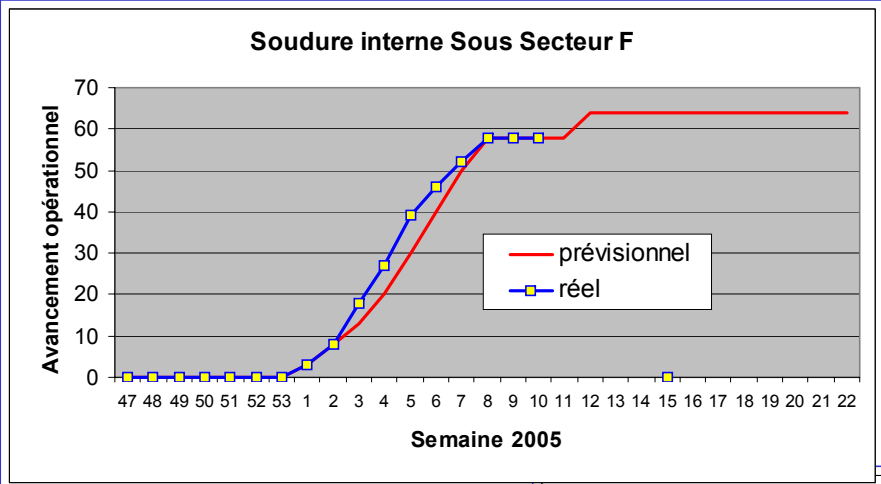


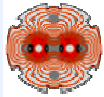
Sector 8-1 installation



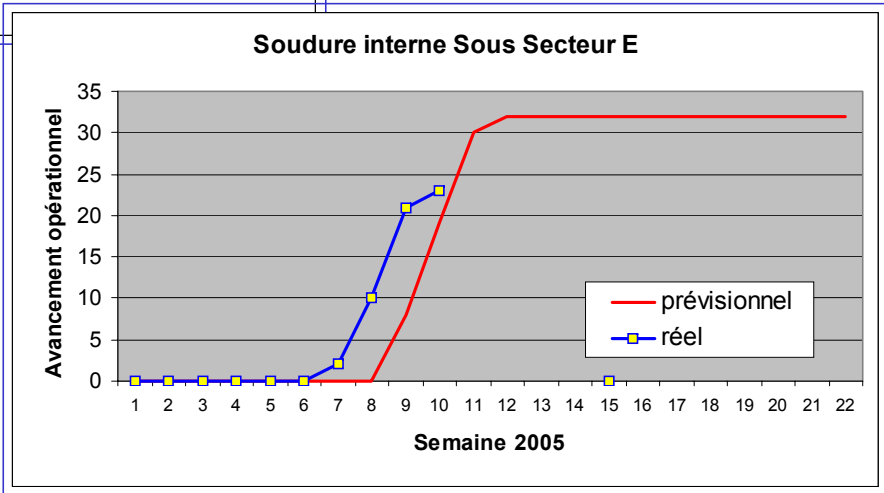
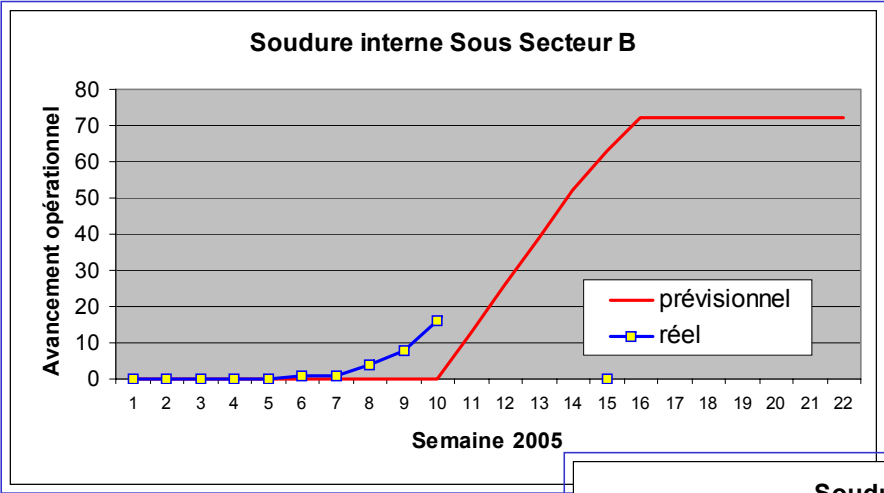


Sub-sectors F and C – sector 8-1





Sub-sectors B and E – sector 8-1





Repair and reinstallation of 7-8

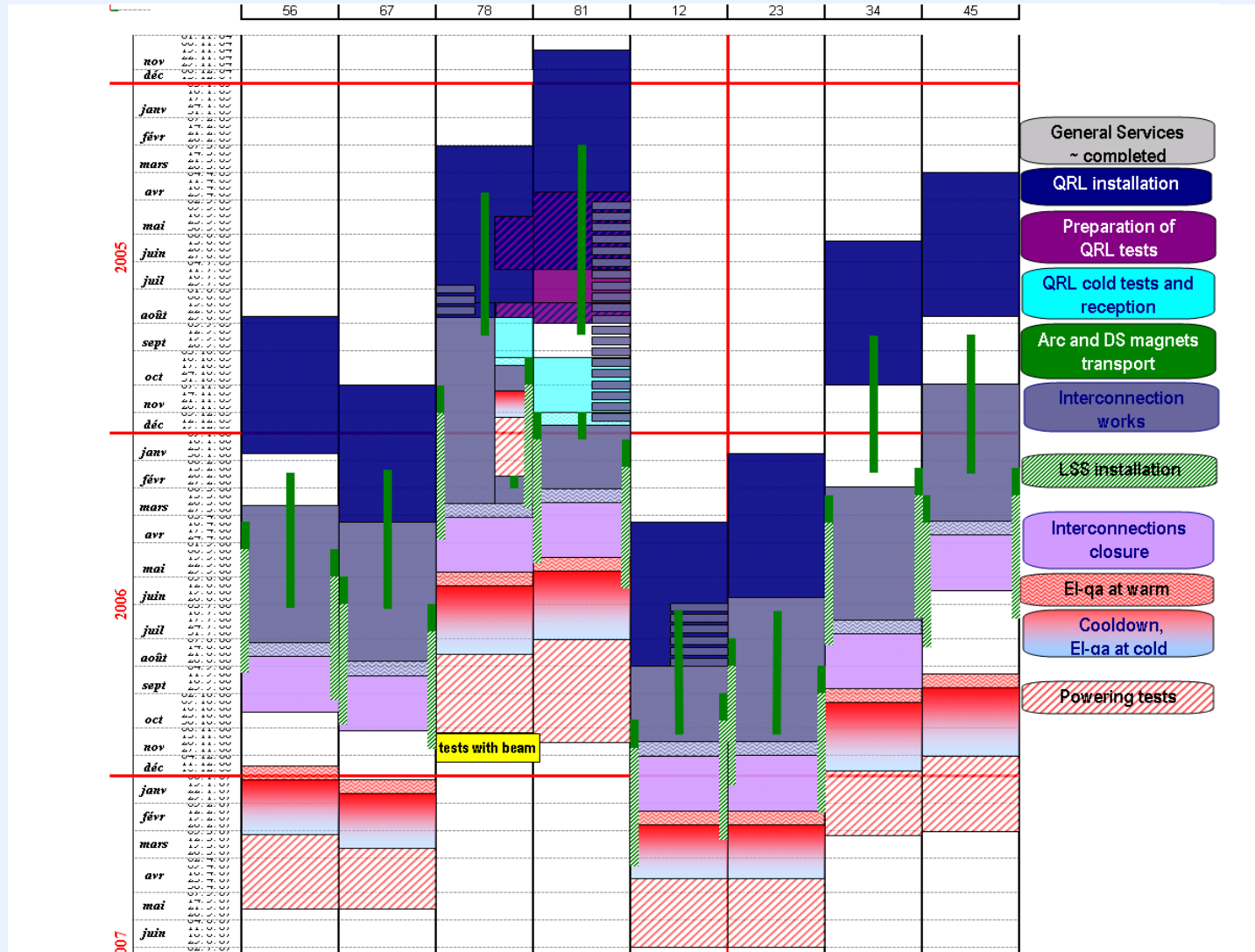
- Repair of service modules has started. First module has been reinstalled.
- Welding in tunnel will start 21st March. Sub-sectors A and B ready for cool down by end July.

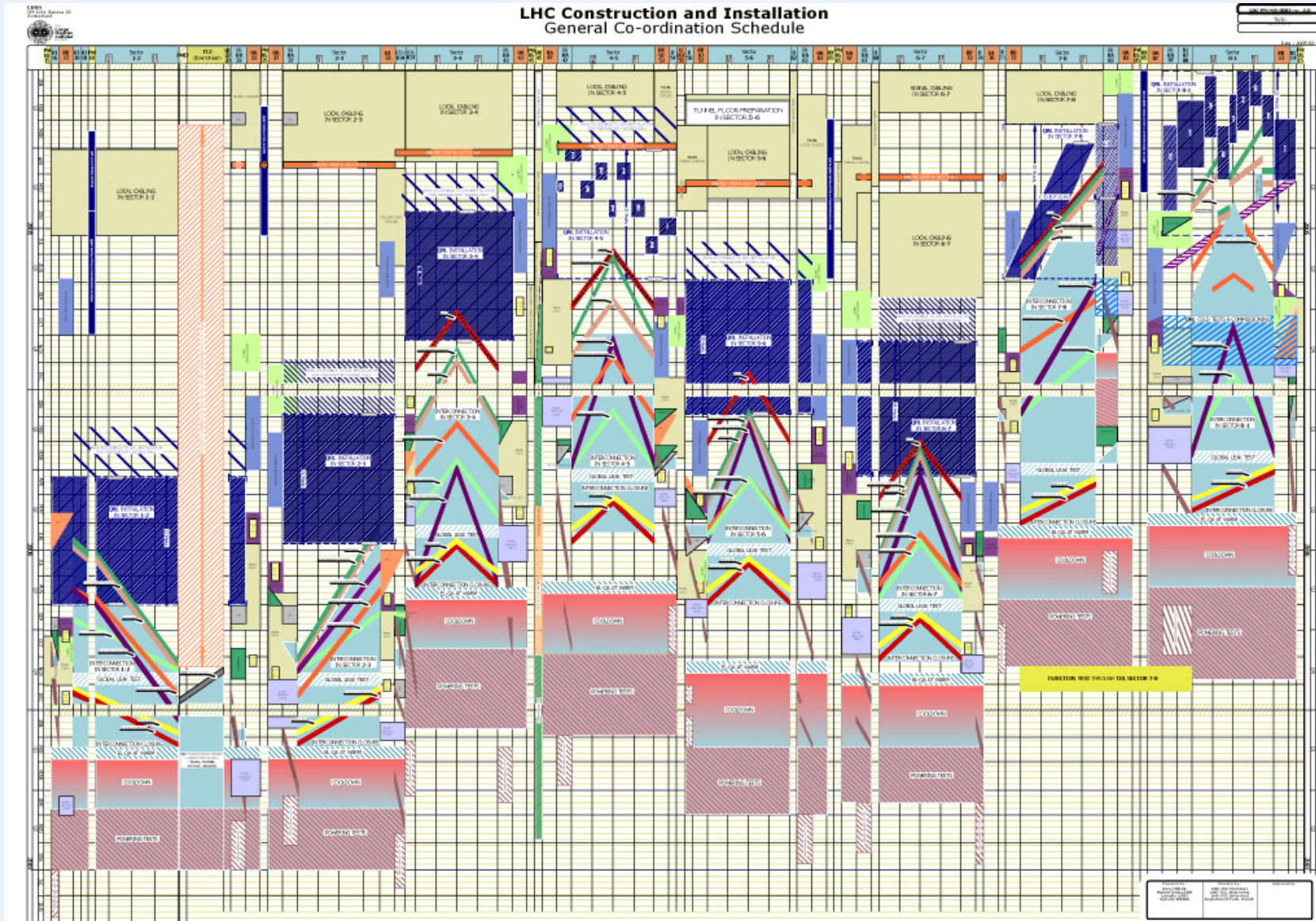
First Service Module in Sector 7-8





Installation and hardware commissioning







Conclusions

- QRL installation is now proceeding smoothly.
- The main remaining problem is the fast ramp up of production of service modules to feed the installation sites at the speed required.
- Hardware commissioning finished by end June 2007.
Ready for beam.