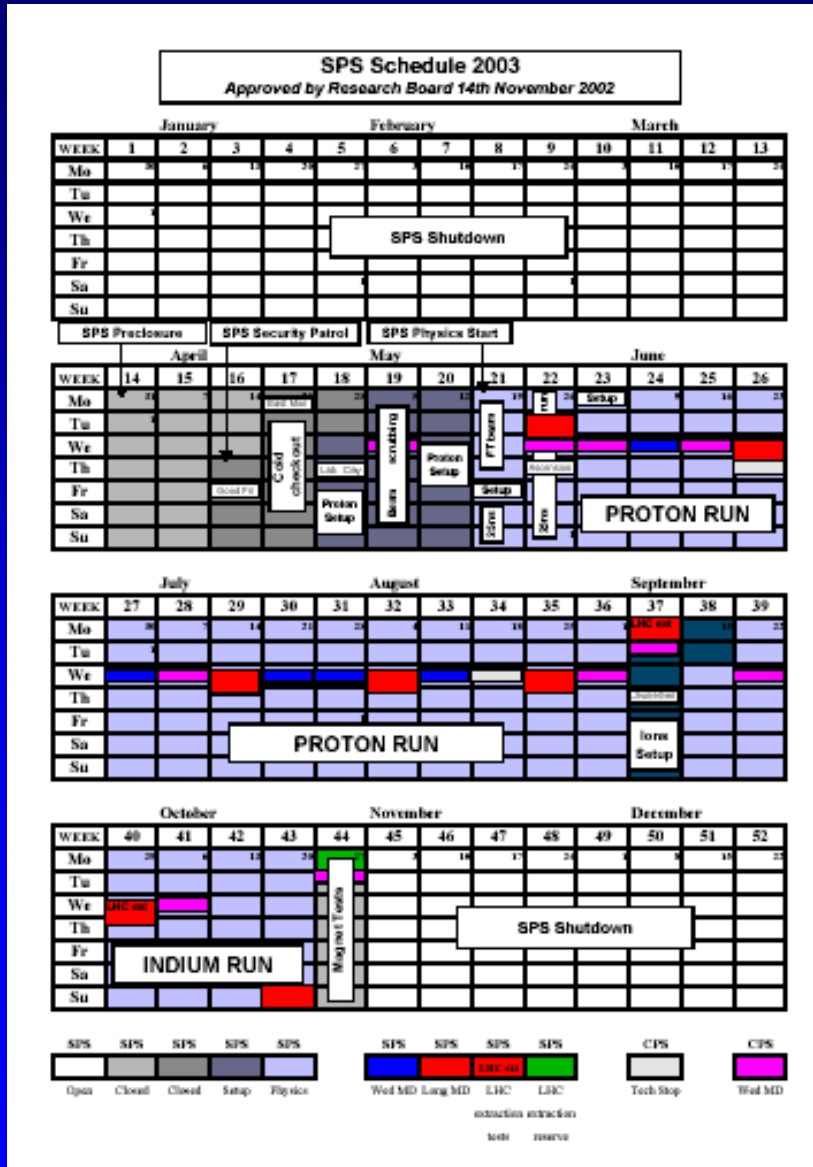


# TCC2 in 2003

## SPS proton run 2003 :

- Installation before 29 April
- Radiation period from 19 June - 7 September
- COMPASS run for physics (110E11 protons/cycle on T6)
- No beam in 2005



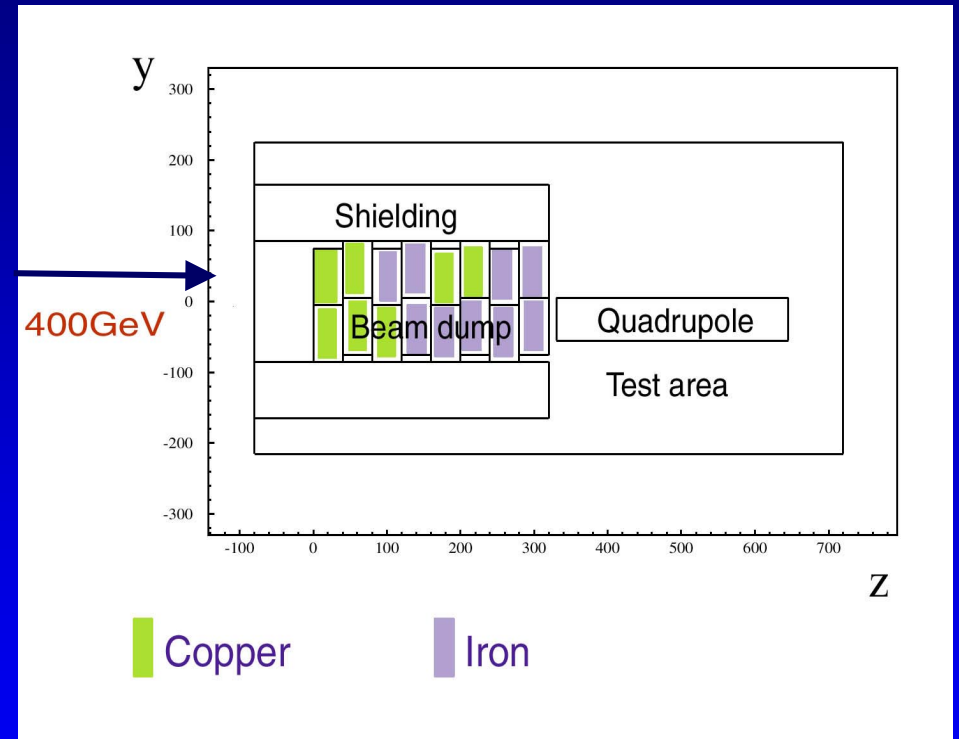
# TCC2 in 2003

*Present Simulation TCC2 :*

**Initial work by C. Fynbo**

**More details needed to match  
dosimetry measurements**

**Claire Fynbo**



# TCC2 in 2003

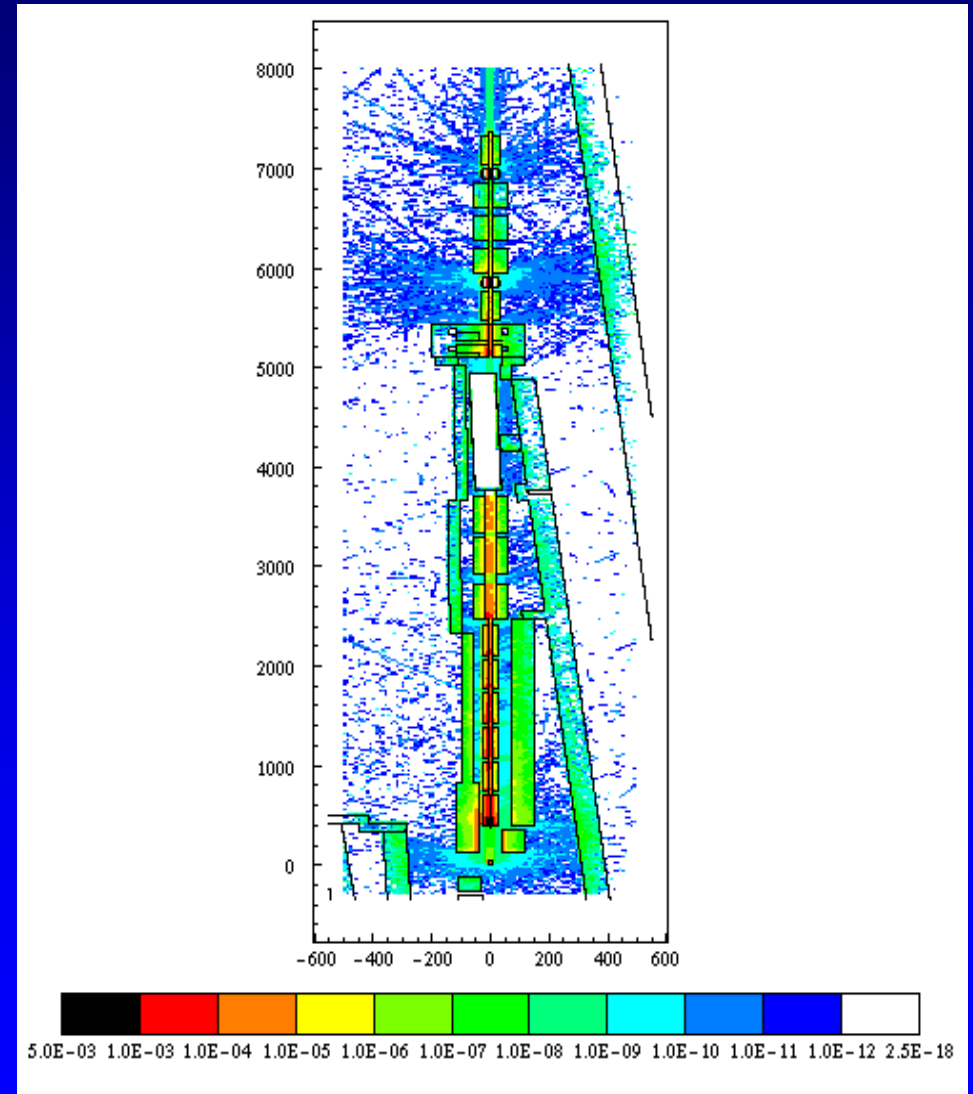
***New Simulation TCC2 :***

**More details**

**Concerns whole area after T6**

**Dose and fluence in zone**

**Katarina Tsoulou**

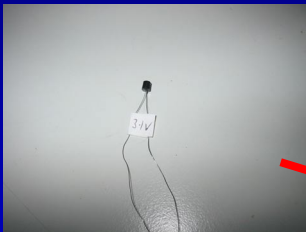


# TCC2 in 2003

*Si dosimeter for TID, NIEL and SEE*

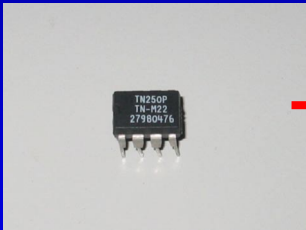
**Diode**

**NIEL**



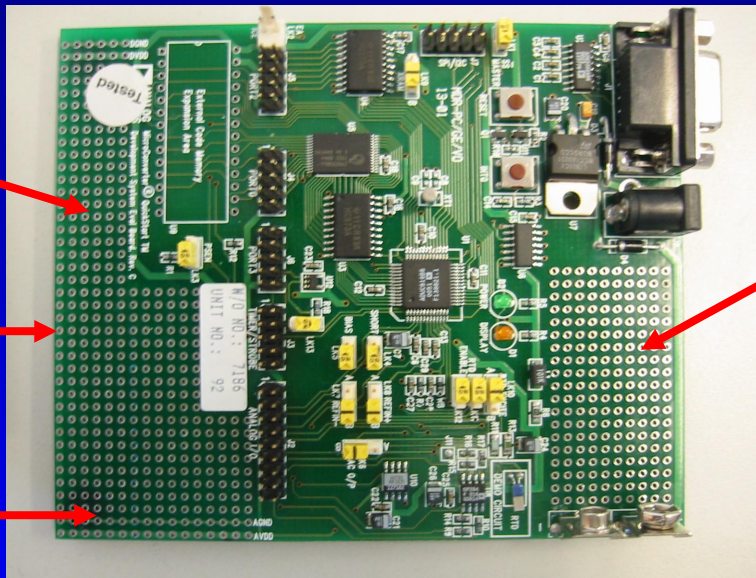
**MOSFET**

**TID**



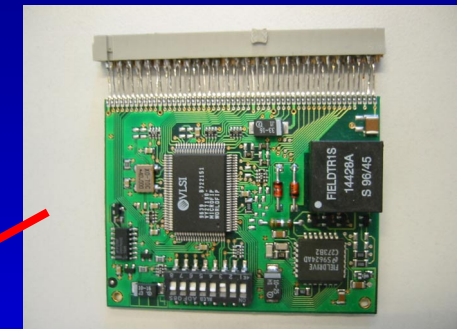
**SRAM**

**SEE**



**Motherboard**

**$\mu$ P, ADC, current source**



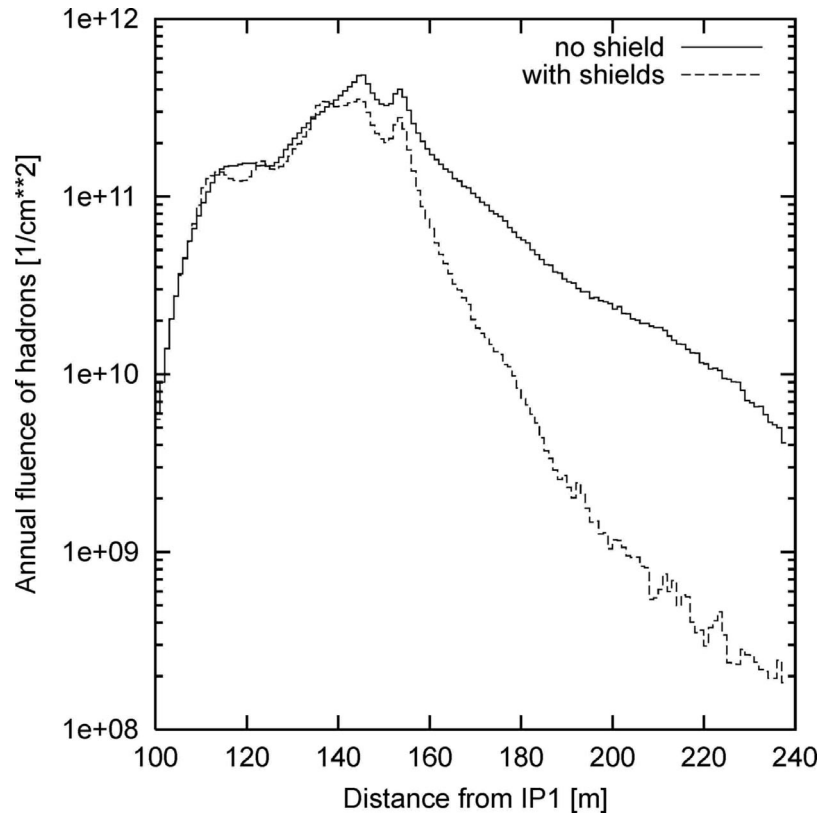
**WorldFIP**

**On line data**

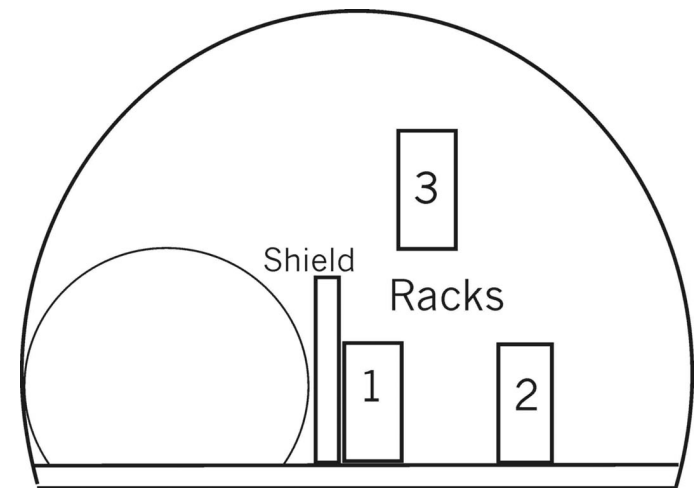
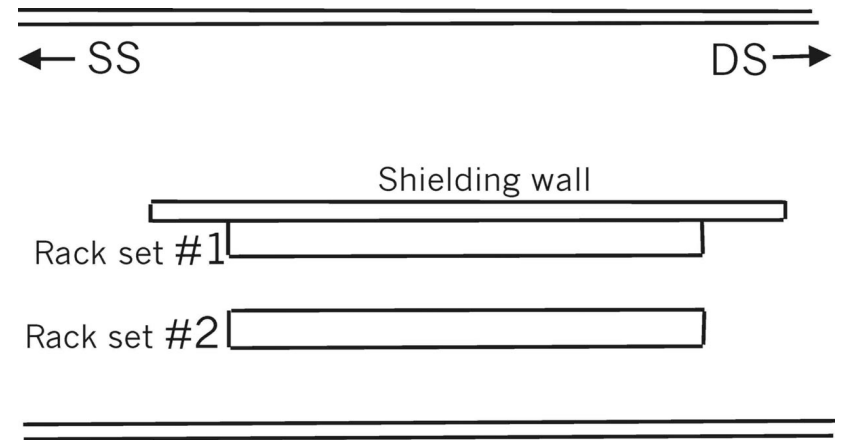
**B. Camanzi (CMS)**

# Radiation in RR17

## Hadron fluence at the tunnel wall



## Schematic Layout of RR17 Point 1



Fluence  $E > 20$  MeV in the LHC ARCs :  $4 \text{ E}9$  per  $\text{cm}^2$  per year

# SEE test in PSI 2003

*60 MeV protons at the PROTIS facility*

•Fr – Sat – Sun **31 January – 2 February 2003**

•Entirely dedicated to LHC machine

•Next possibility in PSI is in March 2003

•Have to share with LHC experiments