

The Worldwide LHC Computing Grid

Summary of Tier2 Workshop / Tutorials Questionnaire

[Workshop Agenda](#)



Worldwide LHC Computing Grid
Distributed Production Environment for Physics data Processing



WLCG Tier2 Workshop

- 2nd SC4 Workshop, with primary focus on “new Tier2s”
 - i.e. those not (fully) involved in SC activities so far
 - 1-2 people obviously didn't know this from responses 😊
 - Complementary to Mumbai “Tier1” workshop
- Attempted to get Tier2s heavily involved in:
 - Planning the workshop (content)
 - The event itself
 - Chairing sessions, giving presentations and tutorials, ...
- Less successful in this than hoped - room for improvement!
- Questionnaire from Jeremy Coles, with input from Michel Jouvin, Graeme Stewart, Kilian Schwarz, Michael Ernst, JDS





Workshop Feedback

- >160 people registered and (a few more) participated!
 - This is very large for a workshop - about same as Mumbai
 - Some comments related directly to this (~40 replies received so far)
- Requests for more:
 - Tutorials, particularly “hands-on”
 - Direct Tier2 involvement
 - Feedback sessions, planning concrete actions etc.
- **Active help from Tier2s in preparing / defining future events would be much appreciated**
 - Please not just the usual suspects...
- See also [Duncan Rand's talk to GridPP16](#)
 - Some slides included below

What did I expect?

- An overview of the future
 - the big picture
 - more details about the experiments
 - data flows and rates
 - how were they going to use the Tier-2 sites?
 - what did they expect from us?
- Perhaps, a tour of the LHC or an experiment



Questionnaire (1/2)

1. What aspect(s) of the workshop/tutorial did you find most useful?
2. What aspect(s) of the workshop/tutorial did you find least useful?
3. If you were organising the next event what would you do differently?
4. What is the single most important thing you learnt this week that you would like to have known before?
5. On a scale of 1 (no use) to 10 (couldn't live without it) how would you rate the workshop?
6. On a scale of 1 (no use) to 10 (couldn't live without it) how would you rate the tutorials?
7. Did you ask any questions or enter the discussions during the workshop?
8. Did you ask any questions or enter the discussions during the tutorials?
9. If you answered "no" to either 7 or 8 but had questions or points you think should have been considered, what stopped you from making more of a contribution? What were those questions or comments?



Questionnaire (2/2)

10. Are you confident that you are well positioned to contribute committed resources to WLCG at required service levels on behalf of your institute and country? If not what do you think is missing?
11. What sources of operational information do you find most useful in day-to-day running of your site?
12. What information do you feel you currently lack which if available would greatly increase your ability to contribute to WLCG and meeting the experiment needs?
13. What is currently your single biggest concern in respect of the WLCG project?
14. What would you like covered at the next workshop or tutorials?
15. Was this the first service challenge related meeting / workshop that you attended?
16. How did you find the sessions on experiment different use cases? (Too long, Perfect, Too short)
17. What is your background? (Computer Scientist, Physicist, Both, Other)
18. Are there any other comments or suggestions you would like to make?

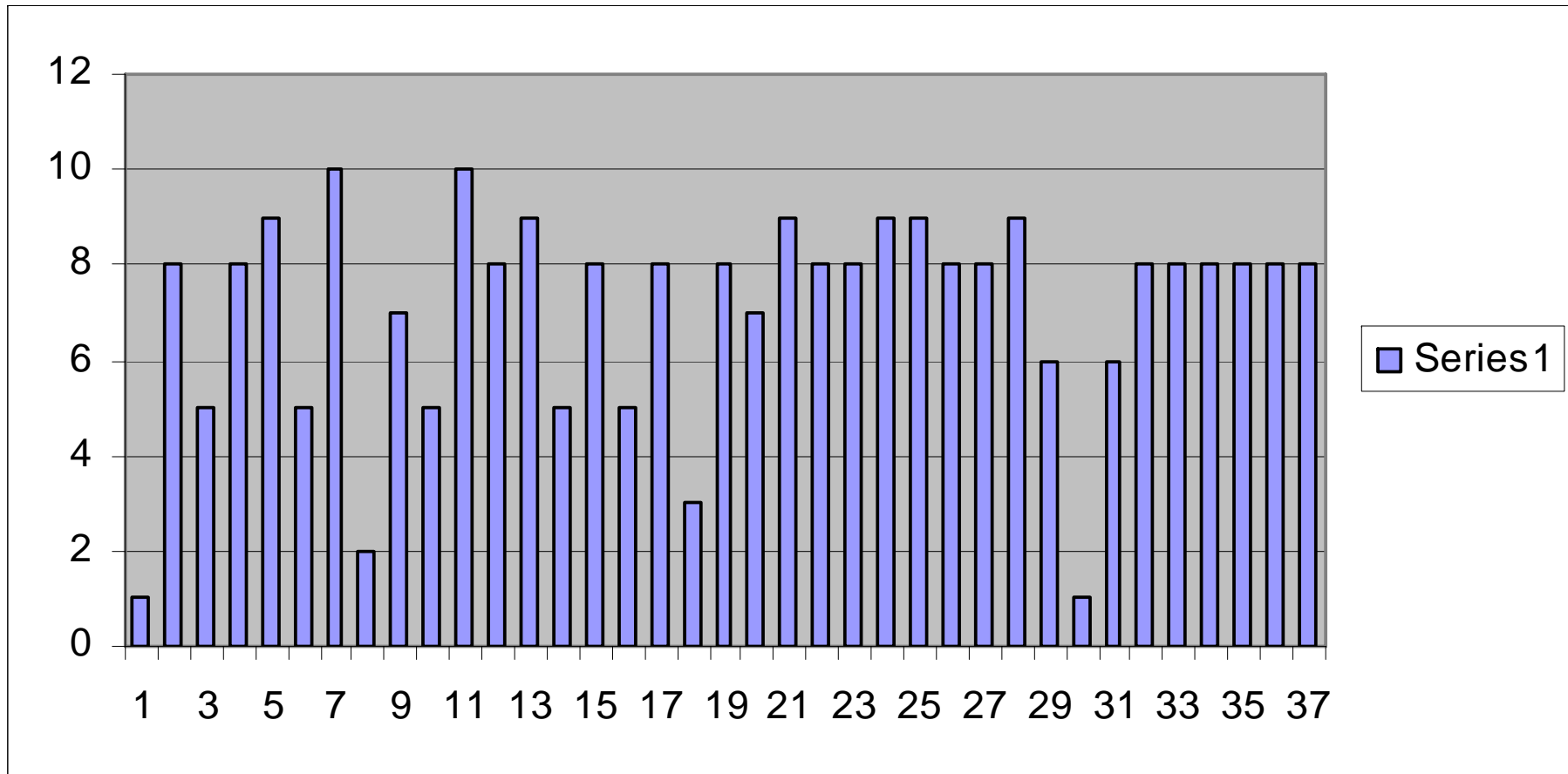


Questionnaire (2/2)

10. Are you confident that you are well positioned to contribute committed resources to WLCG at required service level from your institute and country? If not what do you think is needed?
11. What sources of funding are currently supporting the day-to-day running of your site?
12. What information would you like to see? How could we better increase your knowledge of WLCG? What information would greatly increase your understanding of WLCG? What are your current needs?
13. What is currently limiting your ability to participate in the project?
14. What would you like to see in the future?
15. Was this the first service workshop that you attended?
16. How did you find the service workshops on experiment different use cases? (Too long, Perfect, Too short)
17. What is your background? (Computer Scientist, Physicist, Both, Other)
18. Are there any other comments or suggestions you would like to make?

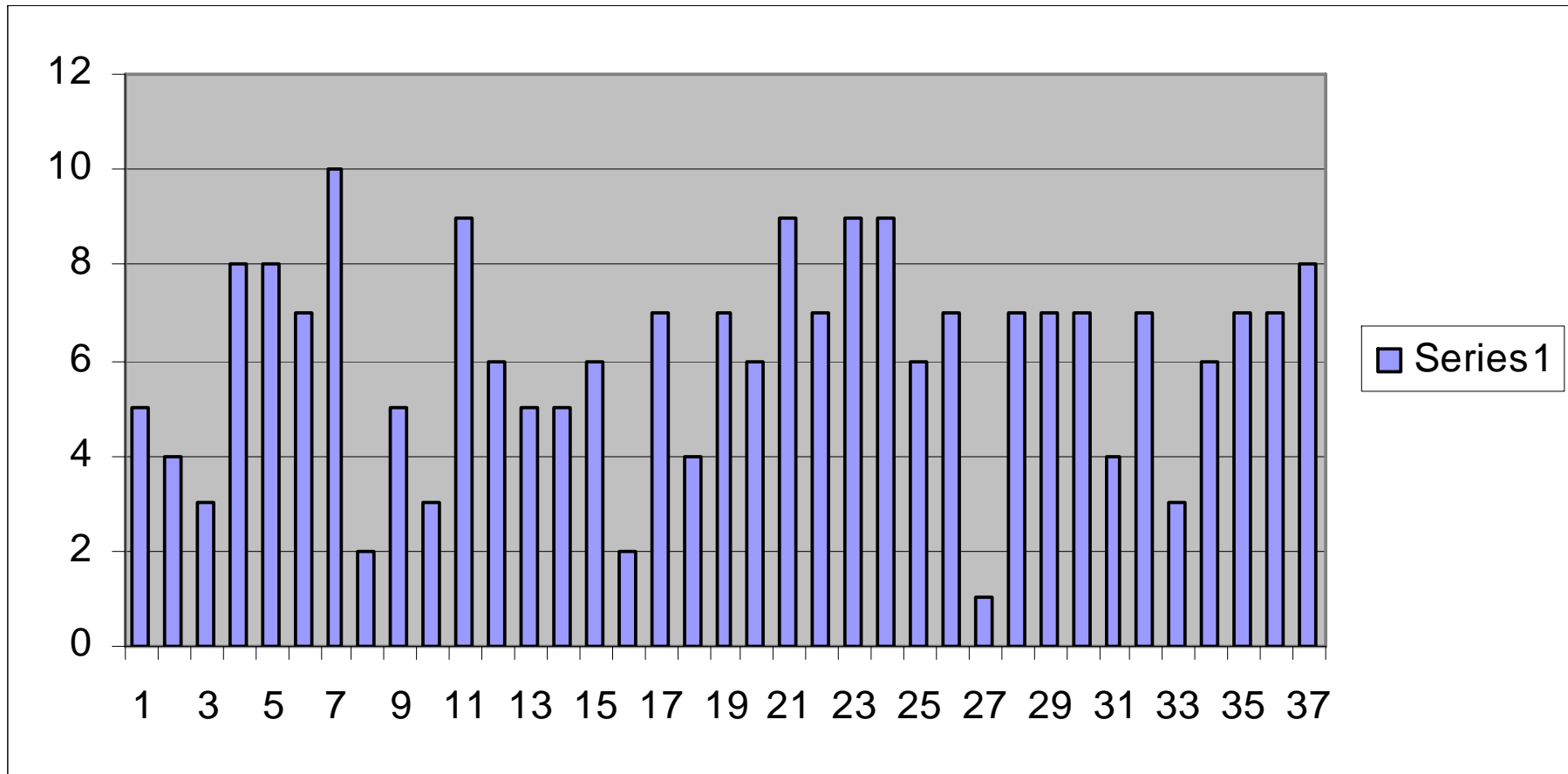


Tutorial Rating - 10=best





Workshop Rating



WLCG Tier2 Workshop - Summary of responses to questionnaire



Question 10

10. Are you confident that you are well positioned to contribute committed resources to WLCG at required service levels on behalf of your institute and country? If not what do you think is missing?

- 1 NO
- 1 "not entirely"
- 1 "I hope so"
- The rest said YES!
 - Quite a few "Yes, but"s or "Yes, if"s

Middleware tutorials

- Popular – lots of discussion
- Understandable given fact that Tier-2 system admins more interested in middleware than experimental computing models
- Good to be able to hear roadmap for LFC, DPM, FTS, SFT's etc. from middleware developers and ask questions

Tier-2 interaction

- Didn't appear to be much interaction between Tier-2's
- Lack of name badges?
- Missed chance to find out how others do things
- Michel Jouvin from GRIF (Paris) gave a summary of his survey on Tier-2's
 - large variation between resources at Tier-2's
 - 1 to 8 sites per Tier-2; 1 to 13 FTE!
- Difference between distributed vs. federated Tier-2's?
- Post-workshop survey excellent idea

Providing a Service

- We are the users and customers of the middleware
- Tier-2 providing a *service* for experiments
 - CMS: 'Your *customers* will be remote users'
- Tier-2's need to generate a customer service mentality
- Need good communication paths to ensure this works well
- CMS have VRVS integration meetings and email list – sounds promising
- Not very clear how other experiments will communicate proactively

Summary

- Learnt a lot about how the experiments intend to use Tier-2's
- Pretty clear about what they need from Tier-2 sites
- Could have been more feedback from Tier-2's
- Could have been more interaction between Tier-2's
- Tier-2's are critical to success of LHC: service mentality
- Communication between experiments and Tier-2's unclear

The LHC juggernaut is changing up a gear !



Workshop Gripes

- Why no visit to e.g. ATLAS?
- Why no introduction to particle physics?
- These things could clearly have been arranged
- *Why no suggestion in the meeting Wiki?*
- Why no name badges? (We had CERN access cards, but not for 'locals'...)
- Start time (11:00 on Mon&Tue) (dictated by room availability)
- Better coffee, air conditioning, ...
- More involvement of Tier1s and Tier2s





Workshop Comments

“Very very inspiring” “Hope to do it again soon”

“Tutorials were very useful”

“The organisation was excellent”

“Discussions were very enlightening”

“Information collected together in one place”



Future Workshops

- Suggest 'regional' workshops to analyse results of experiment activities in SC4 during Q3/Q4 this year - important to drill down to details / problems / solutions
- A 'global' workshop early 2007 focussing on experiment plans for 2007
- Another just prior to CHEP
- Given the size of the WLCG collaboration, these events are likely to be **BIG!**
- Few suitable meeting rooms at CERN - need to plan well in advance
- Something like 2 per year? Co-locate with CHEP / other events where possible?
- Quite a few comments suggesting HEPiX-like issues. Co-locate with HEPiX?
- A one-size-fits-all event is probably not going to succeed...



Jan 23-25 2007, CERN

- This workshop will cover: For each LHC experiment, detailed plans / requirements / timescales for 2007 activities.
- Exactly what (technical detail) is required where (sites by name), by which date, coordination & follow-up, responsables, contacts, etc etc. There will also be an initial session covering the status of the various software / middleware and outlook. **Do we also cover operations / support?**
- From feedback received so far, looks like an explicit interactive planning session would be a good idea
 - Dates: 23 January 2007 09:00 to 25 January 2007 18:00 (whole week now booked)
 - Location: *CERN*, Room: [Main auditorium](#)
- **Do we need tutorials? If so, what topics? Who can help?**
- **Other ideas? Expert panel Q&A? International advisory panel?**



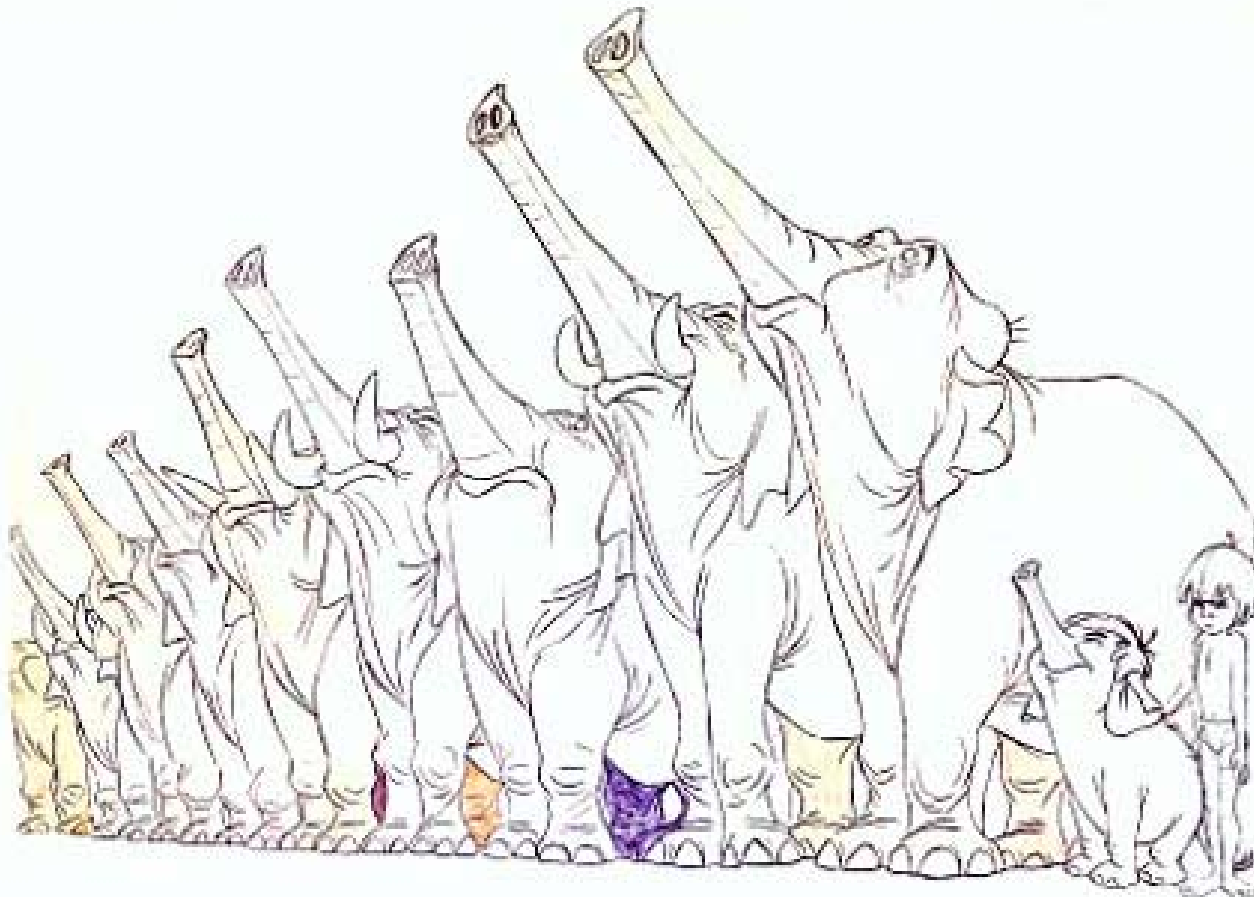
Sep 1-2 2007, Victoria, BC

- Workshop focussing on service needs for initial data taking: commissioning, calibration and alignment, early physics. Target audience: all active sites plus experiments
- *We start with a detailed update on the schedule and operation of the accelerator for 2007/2008, followed by similar sessions from each experiment.*
- *We wrap-up with a session on operations and support, leaving a slot for parallel sessions (e.g. 'regional' meetings, such as GridPP etc.) before the foreseen social event on Sunday evening.*
- Dates: 1-2 September 2007
- Location: *Victoria, BC, Canada*, co-located with CHEP 2007



Summary

- Workshops have been well attended and received
 - Feedback will help guide future events
- **Need to improve on Tier1+Tier2 involvement**
 - Preparing agenda / chairing sessions / giving talks etc.
- Strong demand for more tutorials
 - Hands-on where possible / appropriate
- Hopefully lots of volunteers to help with future events...



WLCG Tier2 Workshop - Summary of responses to questionnaire