A decorative graphic consisting of a thin yellow circle on the left side. A thick horizontal bar with a yellow-to-white gradient is positioned across the middle. On the left side of the bar, there is a large black left square bracket. On the right side of the bar, there is a large yellow right square bracket.

# FroNTier Production Setup @ CERN

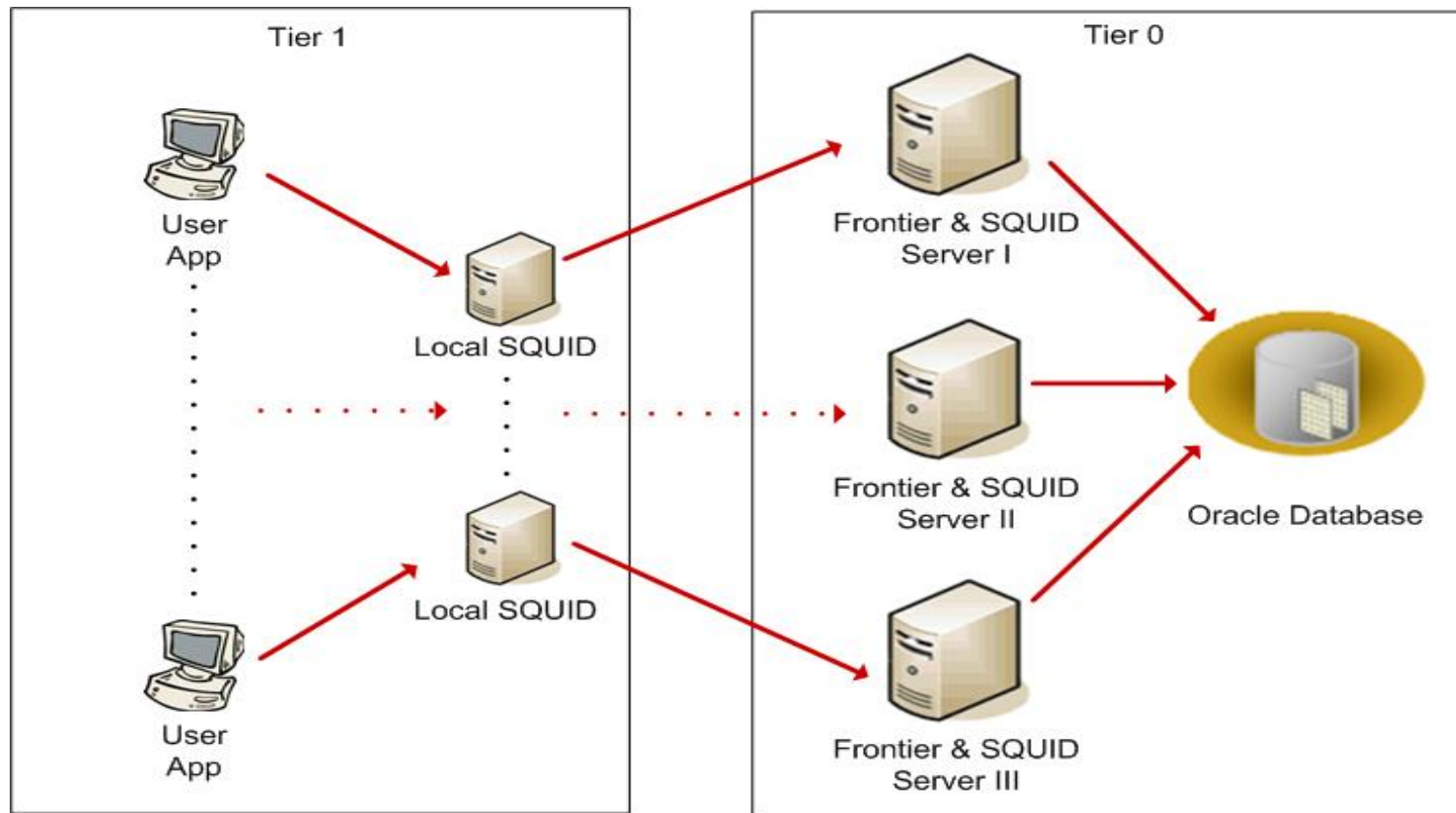
Database Readiness Workshop - 6 February @ CERN

Luis Ramos

# Frontier Production Configuration

- Configuration being setup at CERN Tier 0
  - 3 servers running Frontier & Squid (worker nodes):
    - Dual Intel(R) Xeon(TM) CPU 2.80GHz
    - 2Gb RAM
    - Hardisk 150Gb
    - Gigabit ethernet
  - Back-end Oracle Database 10gR2 (where Frontier connects)
    - The CMS production RAC
- Setup at Tier 1 sites
  - User Apps (executing on worker nodes)
  - Local Squid servers (service nodes visible to local worker nodes)

# Frontier Production configuration



Squid runs in http-accelerator mode (as a reverse proxy server)

# [ Frontier Server Software ]

---

- Frontier servers software
  - Java v1.5
  - Tomcat v5.5.x
  - Frontier 2.1.x (or later)
  - Squid v2.5.x
    - `frontier_squid 1.0rc4` includes installation scripts

These packages will be deployed as RPMs with Quattor

# Frontier Testbed configuration

- Updated Configuration in 3D testbed
  - 1 server running Frontier & Squid
    - Identical setup as for production
  - Back-end Oracle testbed database 10gR2
  
- T1
  - User Applications
  - Local Squid