



Enabling Grids for E-science

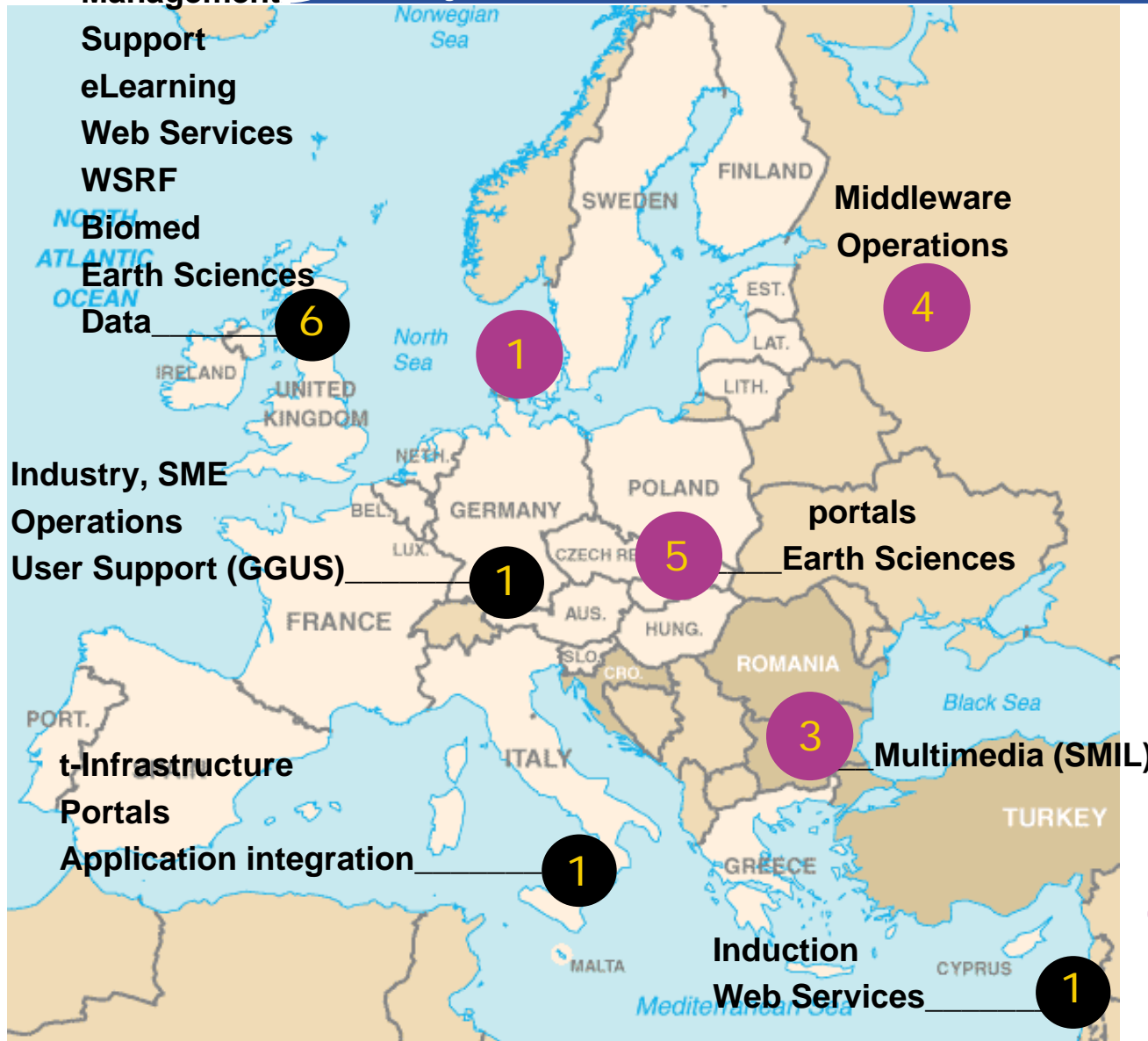
NA3 Training and induction

*Malcolm Atkinson & David Fergusson
NA3 Leader & Activity Manager, NeSC
EGEE Final EU review
22-23 May 2006*

www.eu-egee.org



Distribution of NA3 effort



~ 1 FTE per partner in NA3 (22 partners)

~ 0.3 FTE per partner within EGEE (given 70 partners).

**training everywhere*

Federation

Single partner

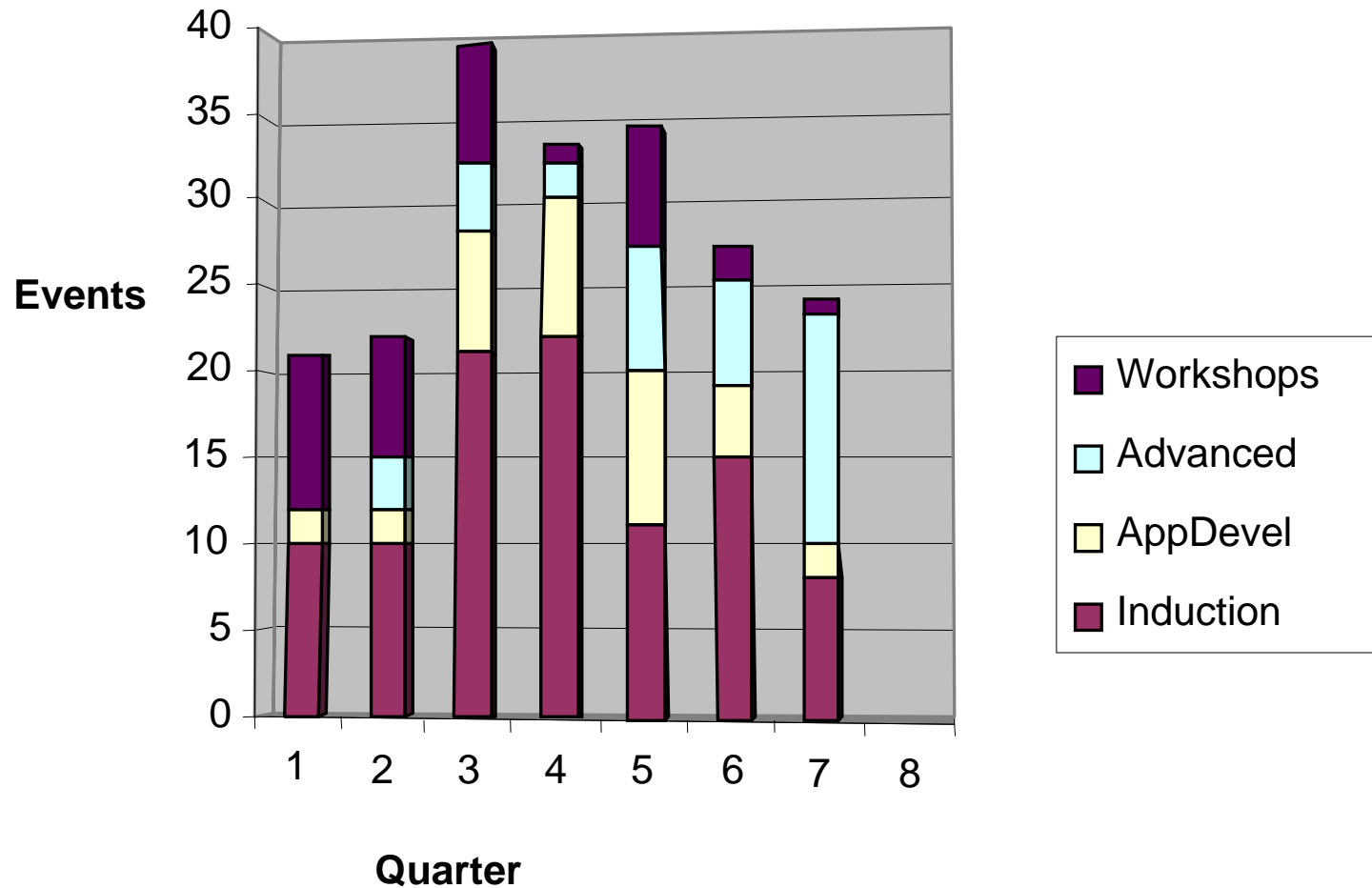


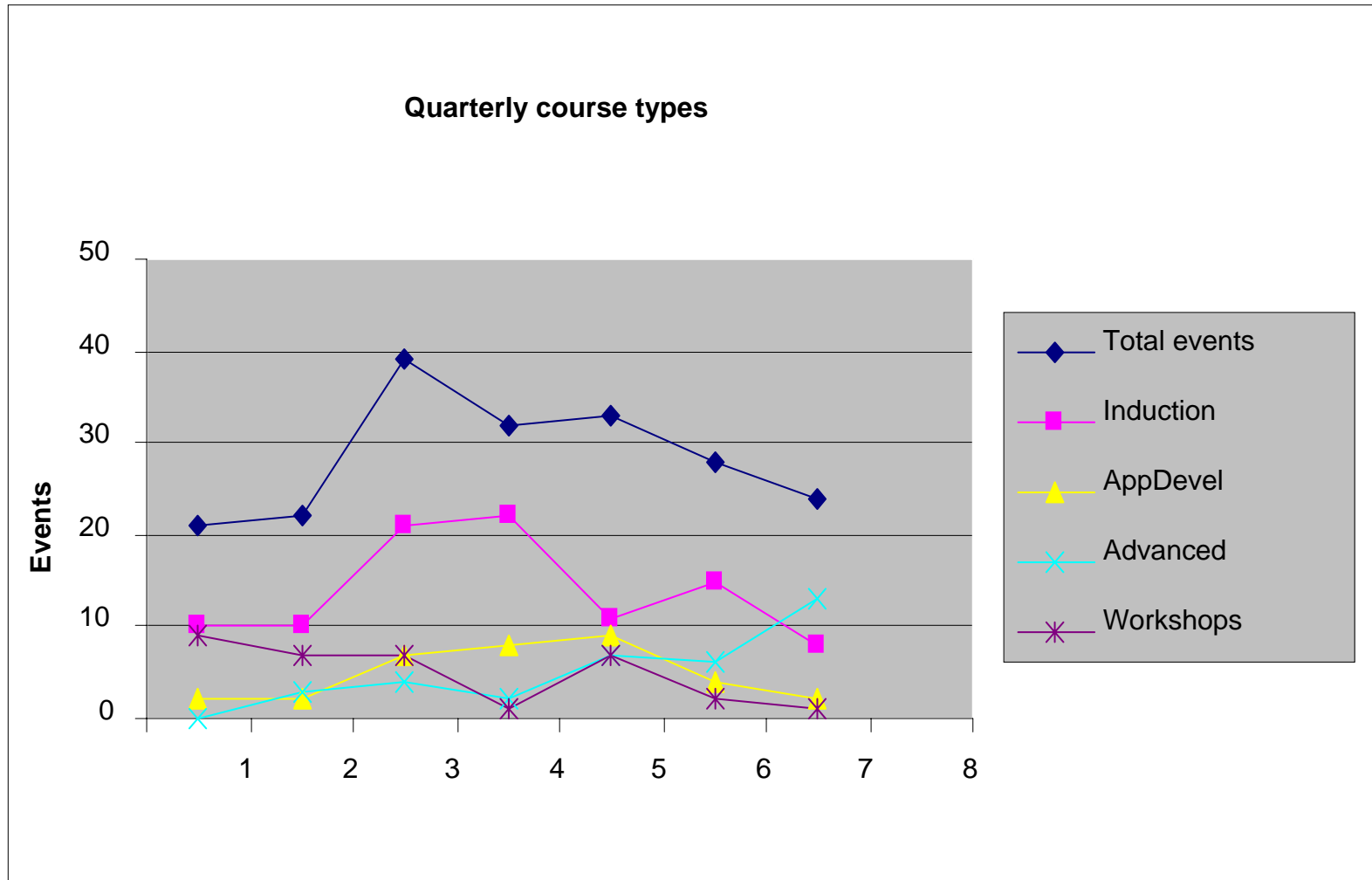
- **2700 attendees at courses**
- **200 training events**
- **7000 participant days**

	Induction Courses	Application Developer Training	Advanced Courses	Technical Retreats	Activity
Number	97 (20)	34 (16)	35 (4)		34 (12)
Average Attendance	29 (50)	18 (25)	29 (25)		35 (30)
Course Length (days)	2 (2)	2 (4)	4 (5)		2 (2)

- Figures in brackets are the expected values at the start of the project

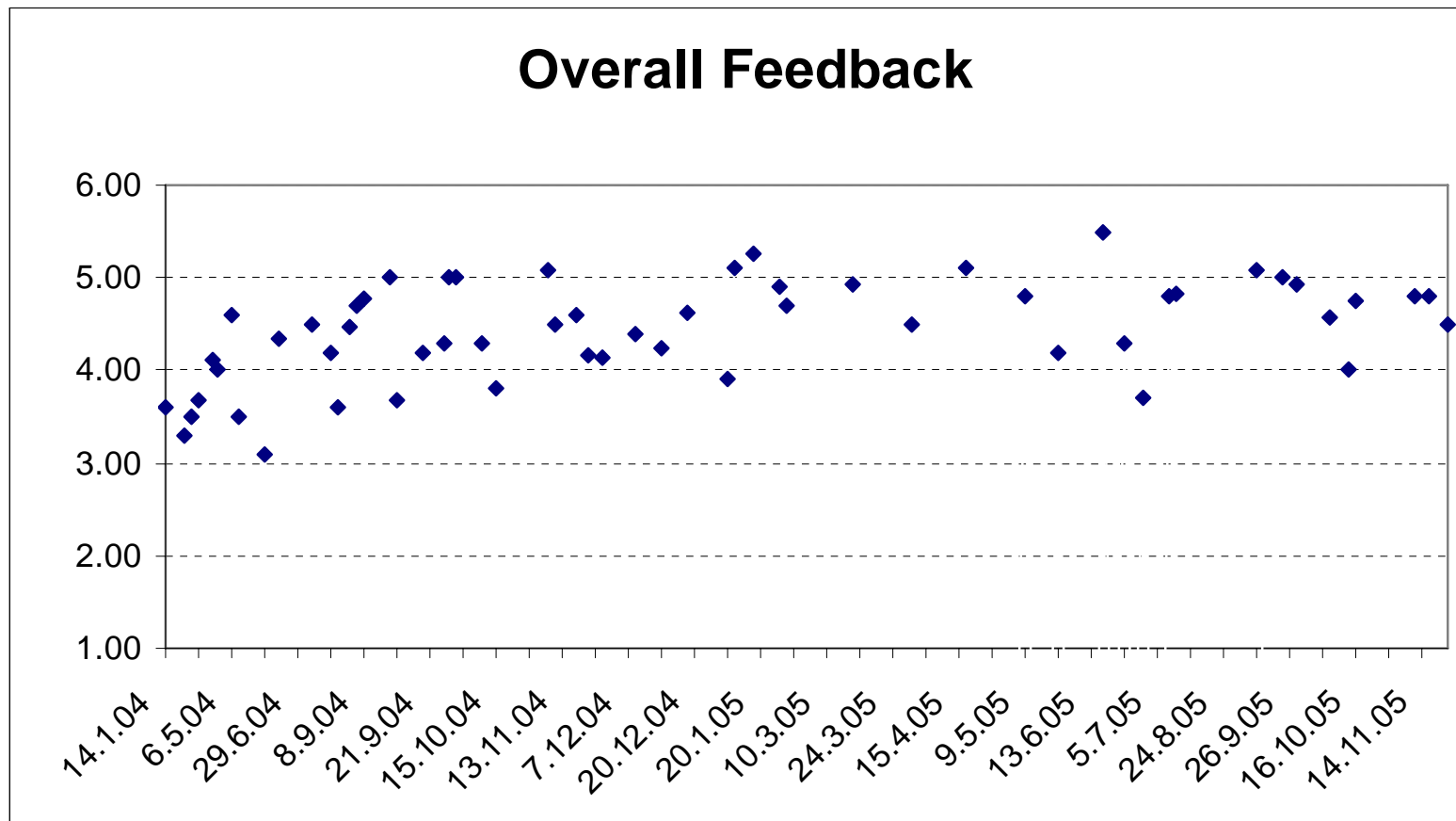
Proportions of course types



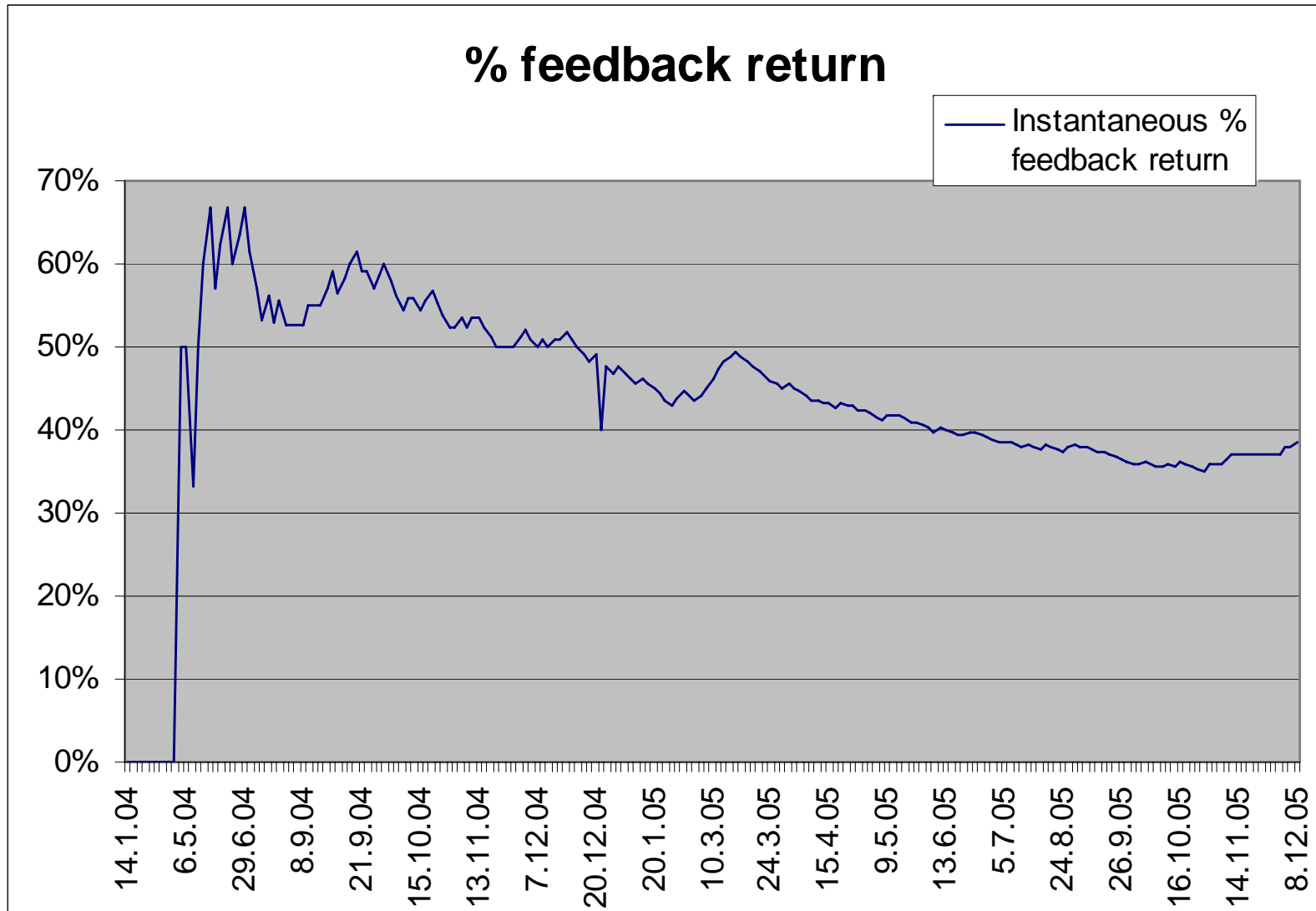


- **Diligent**
- **Magic**
- **EMBRACE**
- **BioinfoGrid**
- **TERENA/NRENS**
- **Industry attendees at:**
 - ISSGC '05
 - Grids@Work tutorial
 - SME course FZK
 - PRISM Forum UK (Pharma)
- **ISSEG, ETICS, ICEAGE,**
- **EUMEDGRID, EELA**
- **Biomed courses**
- **Physics courses**
- **Earth Sciences**
- **Social Sciences**
- **Geographical outreach:**
 - **BalticGrid (joined EGEE)**
 - **Taiwan, Singapore, Japan, Korea, China**
 - **Australia, New Zealand**
 - **Venezuela (joined EELA)**

Participants grade course from 1 to 6, each point – average for a course overall score (workshops not included – see TA)



Trainers review grades and revise course material and training plans



- **Supported approx 5 Summer Schools per year**
 - ISSGC 04, 05
 - GridKa 04, 05
 - CERN Summer School 04, 05
 - Budapest Regional Summer School 04, 05
 - PPARC Summer School 04, 05
- **Highest profile international training/education events in grid computing.**
- **Ran a workshop to initiate a Community Group in Grid Education, Outreach & Training at GGF**
- **Initiated work on Training & Education in e-IRG**

- **GILDA/GENIUS** has been central in installing new middleware versions, making these available and sharing experience
- **UEDIN** cluster also used for early gLite installation in conjunction with **GILDA** to gather experience and developing new application developer courses.
- **Cluster at FZK** used to support application developer and installation courses for gLite

- **Scale**
 - Support geographically diverse groups
 - Many different knowledge domains
 - Breadth of knowledge required

- **Quality**
 - Maintain and encourage a ‘quality culture’

- **Rate of change**
 - New middleware features
 - New VOs
 - Changing needs of domains
 - New projects
 - Changes in national grid provision

- **Delivered beyond targets**
- **Delivered across Europe, even in areas with no representatives**
- **Delivered outreach beyond existing EGEE area**
- **Maintained quality process across partners**
- **Collated a body of training materials to act as catalyst to training**
- **Engaged a broad range of disciplines and related projects**

- **The NA3 Activity in EGEE**
 - Has delivered well
 - This has depended on
 - Close interaction with all other activities
 - Teamwork & Enthusiasm
 - Assistance from many experts
- **We have developed a major repository of material**
 - With self-paced learning support
 - This needs further content & quality processes
- **QA and management is a challenge with a thinly spread community**
 - But we have met this challenge
 - And changed the model in EGEE-II