



Enabling Grids for E-science

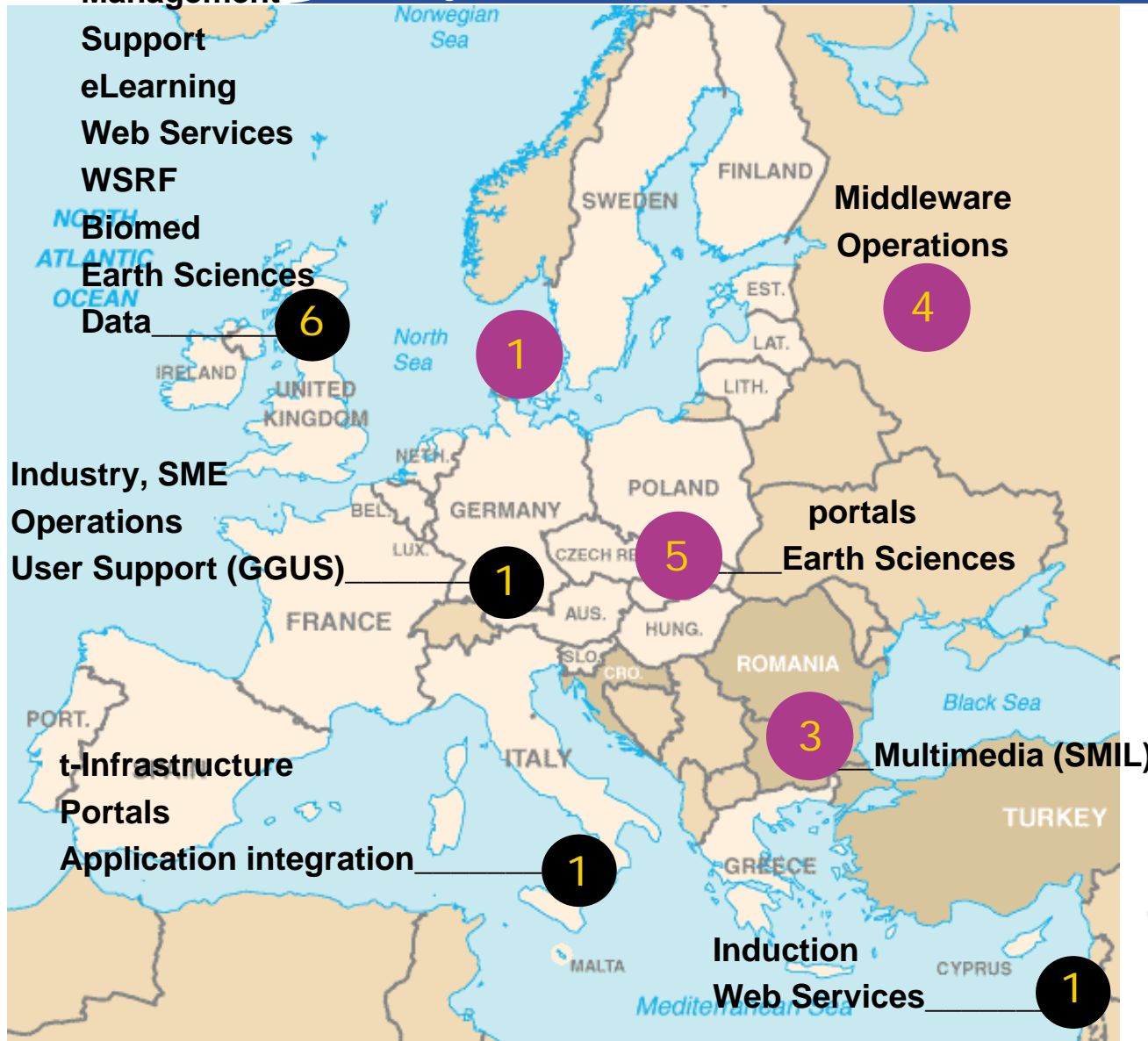
# NA3 Training and induction

*Malcolm Atkinson & David Fergusson  
NA3 Leader & Activity Manager, NeSC  
EGEE Final EU review  
22-23 May 2006*

[www.eu-egee.org](http://www.eu-egee.org)



# Distribution of NA3 effort



~ 1 FTE per partner in NA3 (22 partners)

~ 0.3 FTE per partner within EGEE (given 70 partners).

*\*training everywhere*

Federation

Single partner

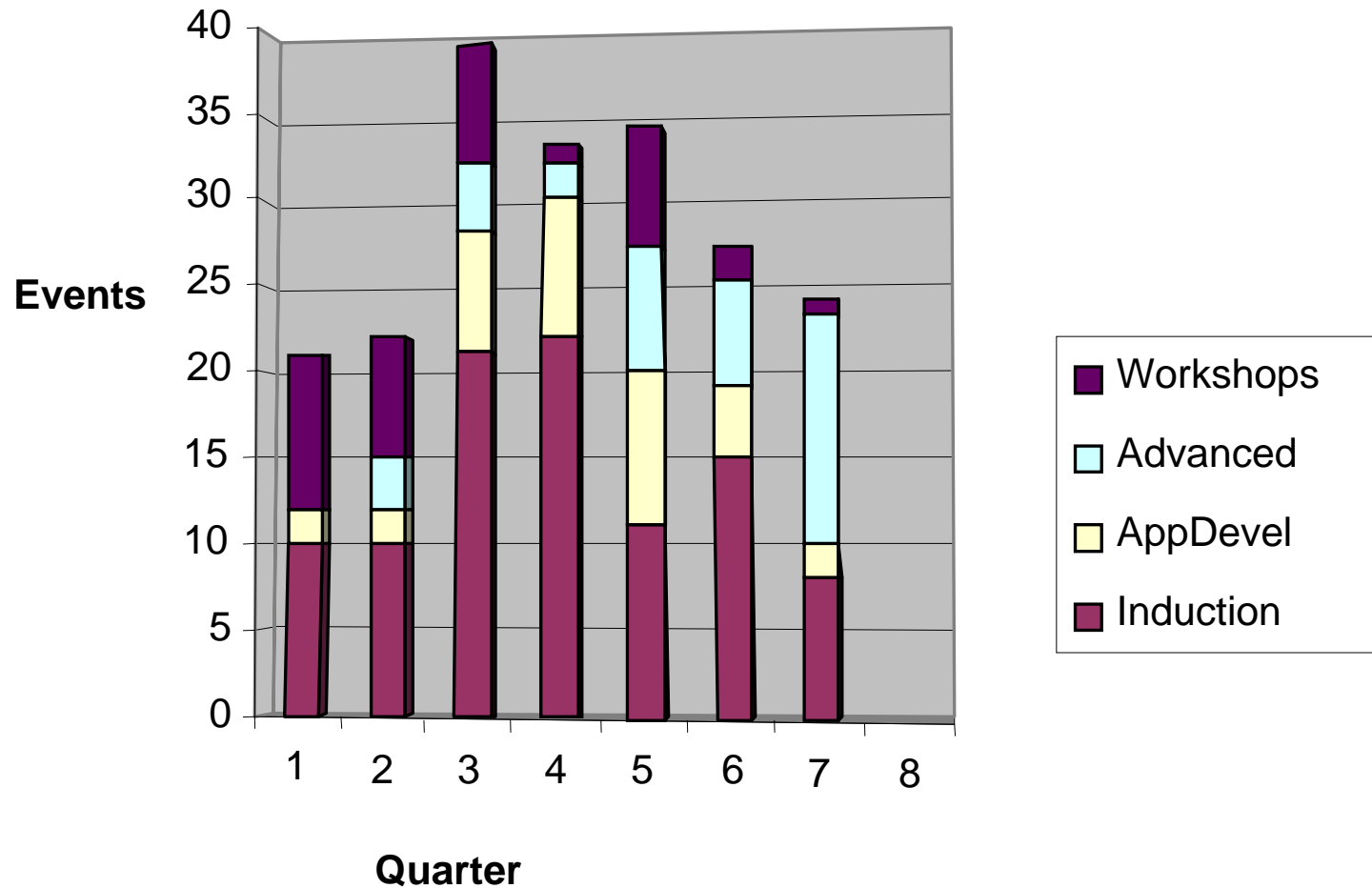


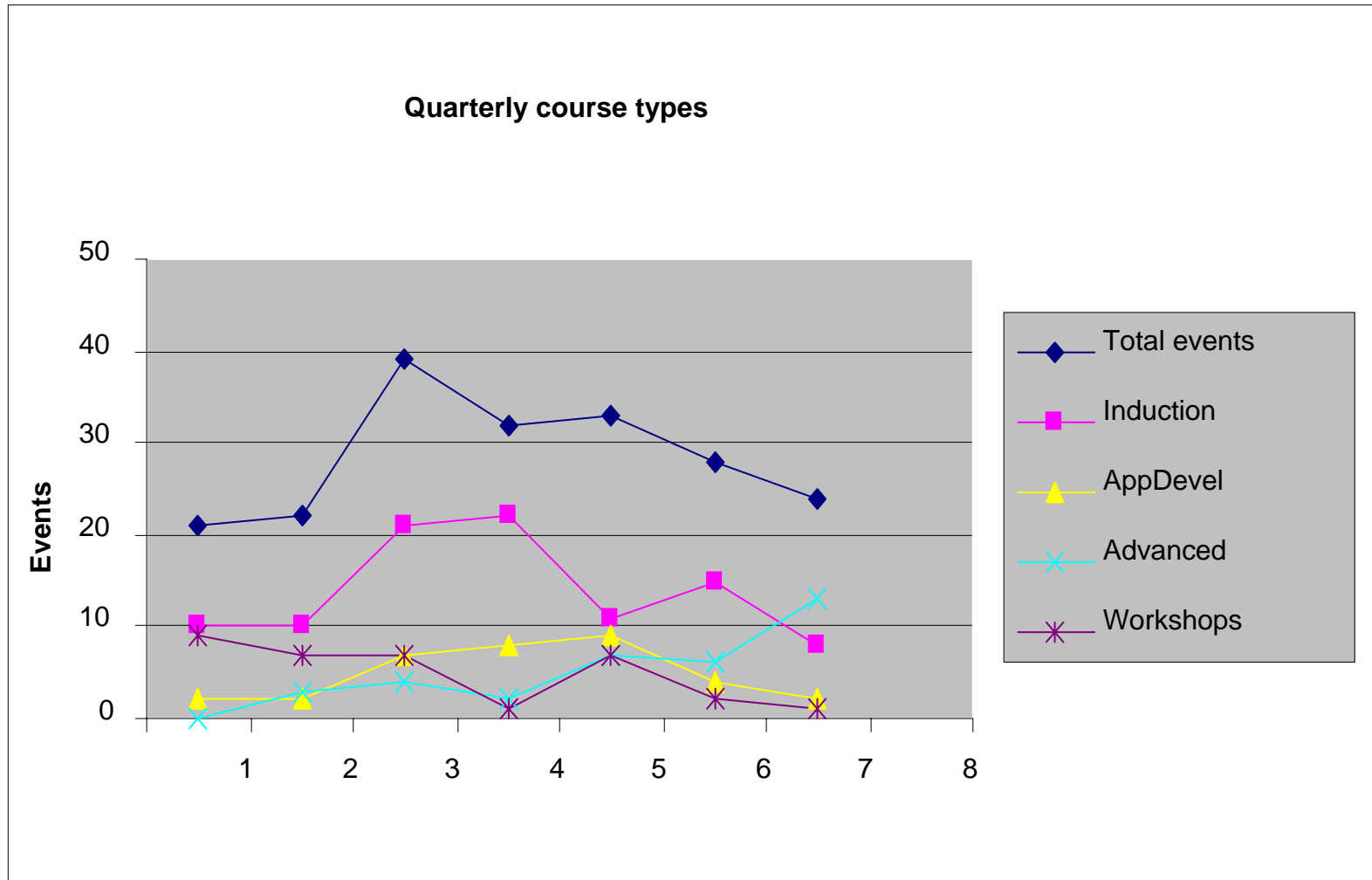
- **2700 attendees at courses**
- **200 training events**
- **7000 participant days**

	<b>Induction Courses</b>	<b>Application Developer Training</b>	<b>Advanced Courses</b>	<b>Technical Retreats</b>	<b>Activity</b>
Number	<b>97 (20)</b>	<b>34 (16)</b>	<b>35 (4)</b>		<b>34 (12)</b>
Average Attendance	<b>29 (50)</b>	<b>18 (25)</b>	<b>29 (25)</b>		<b>35 (30)</b>
Course Length (days)	<b>2 (2)</b>	<b>2 (4)</b>	<b>4 (5)</b>		<b>2 (2)</b>

- Figures in brackets are the expected values at the start of the project

## Proportions of course types

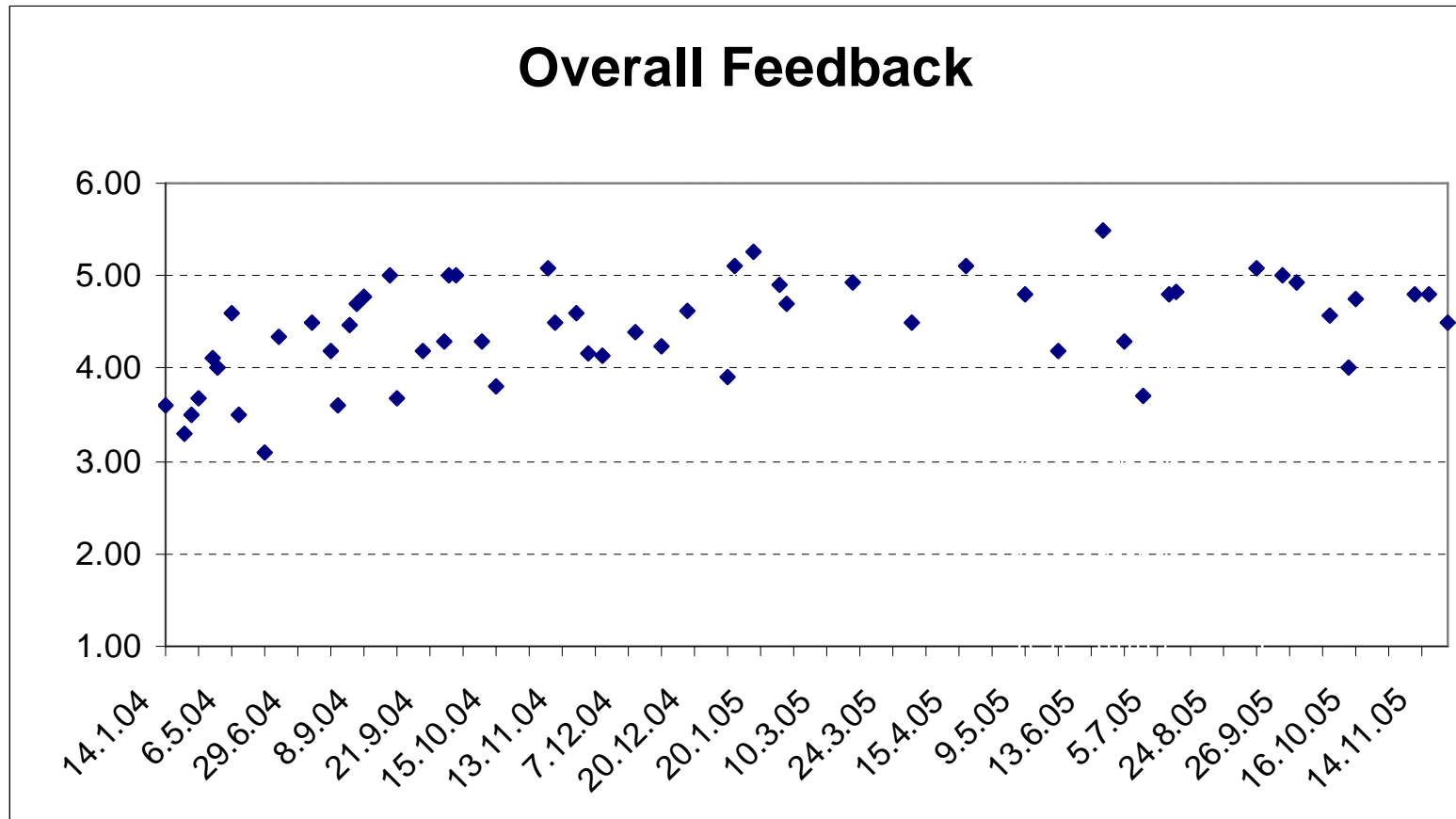




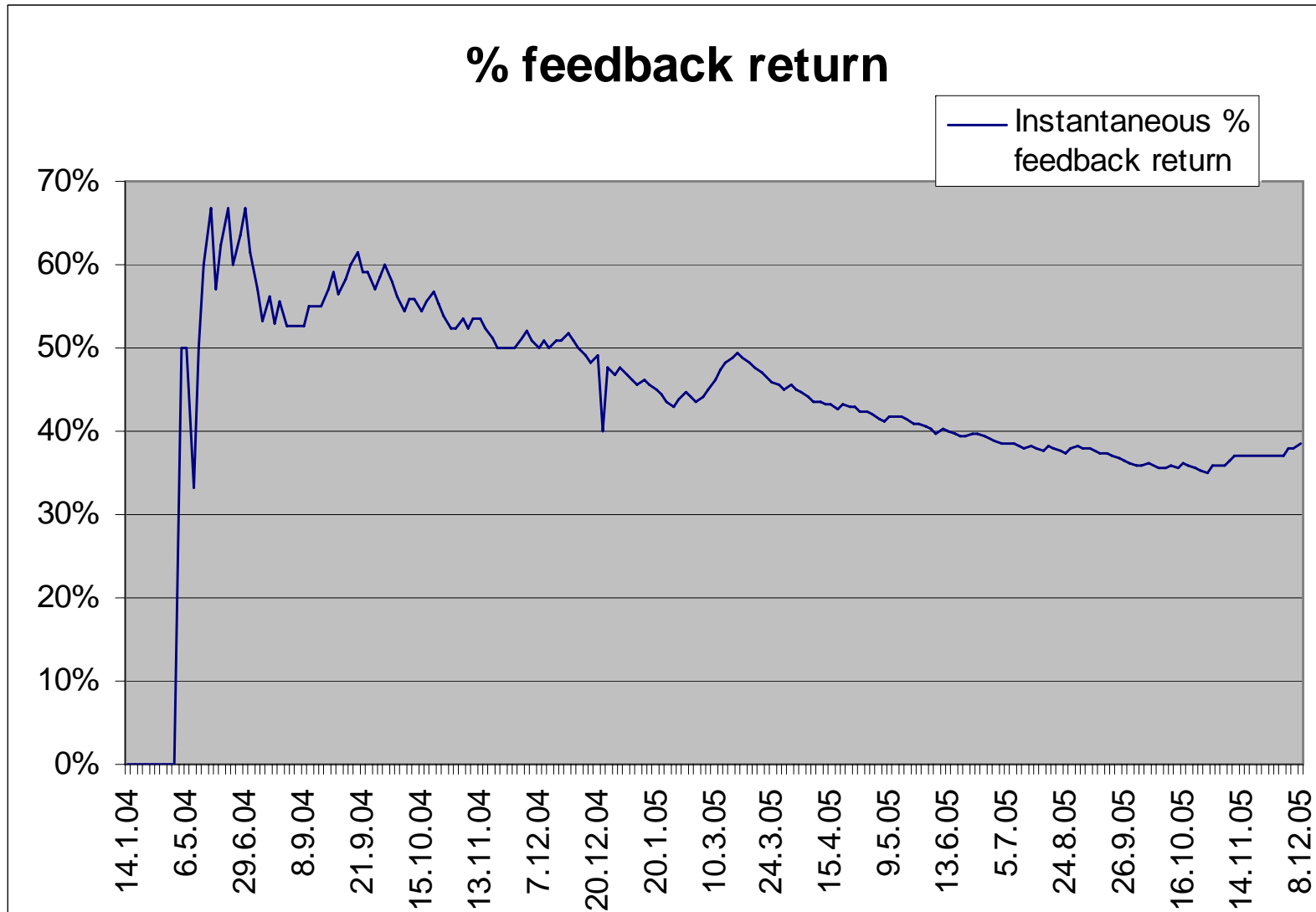
- **Diligent**
- **Magic**
- **EMBRACE**
- **BioinfoGrid**
- **TERENA/NRENS**
- **Industry attendees at:**
  - ISSGC '05
  - Grids@Work tutorial
  - SME course FZK
  - PRISM Forum UK (Pharma)
- **ISSEG, ETICS, ICEAGE,**
- **EUMEDGRID, EELA**
- **Biomed courses**
- **Physics courses**
- **Earth Sciences**
- **Social Sciences**
- **Geographical outreach:**
  - **BalticGrid (joined EGEE)**
  - **Taiwan, Singapore, Japan, Korea, China**
  - **Australia, New Zealand**
  - **Venezuela (joined EELA)**



Participants grade course from 1 to 6, each point – average for a course overall score (workshops not included – see TA)



Trainers review grades and revise course material and training plans



- **Supported approx 5 Summer Schools per year**
  - ISSGC 04, 05
  - GridKa 04, 05
  - CERN Summer School 04, 05
  - Budapest Regional Summer School 04, 05
  - PPARC Summer School 04, 05
- **Highest profile international training/education events in grid computing.**

- **GILDA/GENIUS** has been central in installing new middleware versions, making these available and sharing experience
- **UEDIN** cluster also used for early gLite installation in conjunction with **GILDA** to gather experience and developing new application developer courses.
- **Cluster at FZK** used to support application developer and installation courses for gLite

- **Scale**
  - Support geographically diverse groups
  - Many different knowledge domains
  - Breadth of knowledge required
  
- **Quality**
  - Maintain and encourage a 'quality culture'
  
- **Rate of change**
  - New middleware features
  - New VOs
  - Changing needs of domains
  - New projects
  - Changes in national grid provision

- **Delivered beyond targets**
- **Delivered across Europe, even in areas with no representatives**
- **Delivered outreach beyond existing EGEE area**
- **Maintained quality process across partners**
- **Collated a body of training materials to act as catalyst to training**
- **Engaged a broad range of disciplines and related projects**

