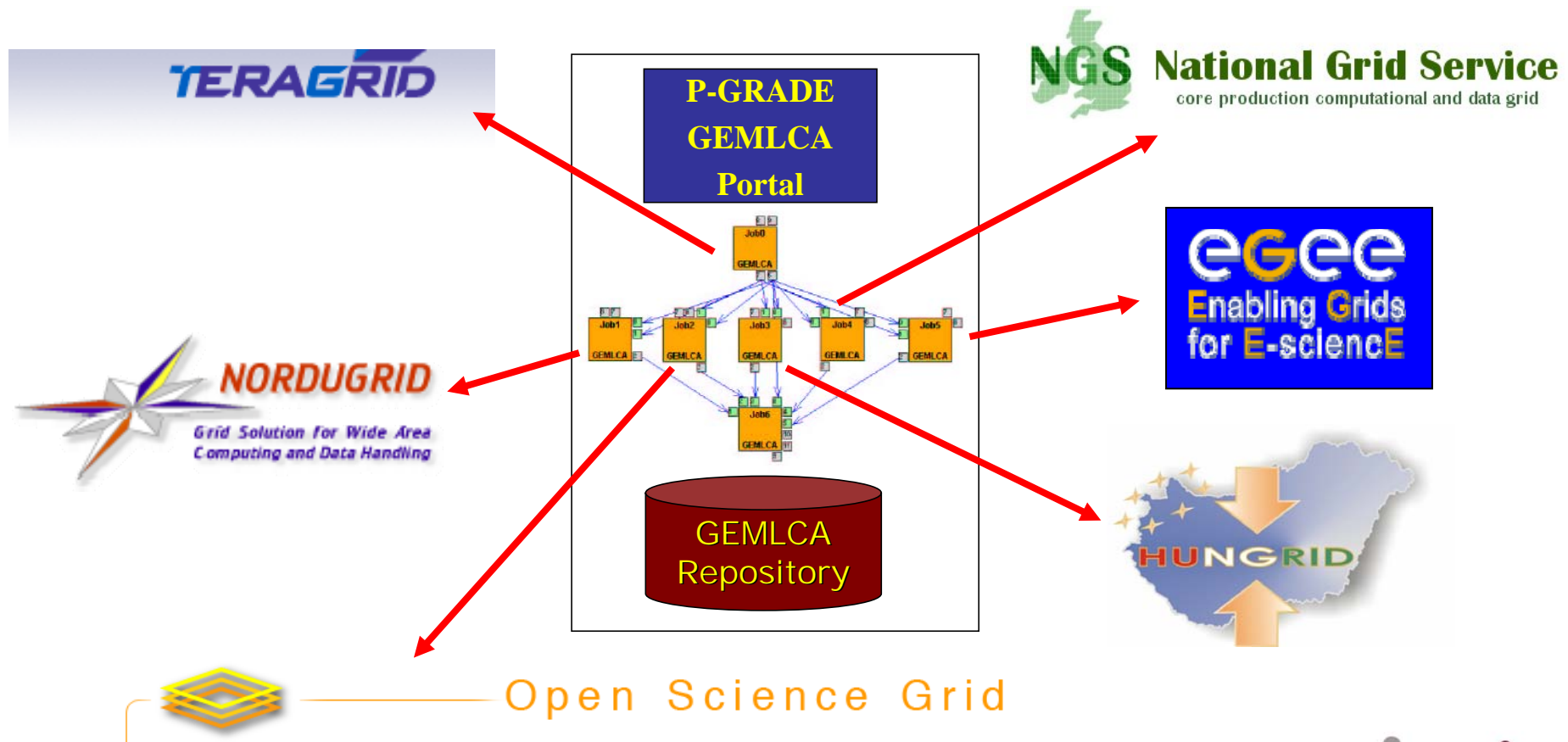




# Workflow Level Grid Interoperability By GEMMLCA and the P-GRADE Portal





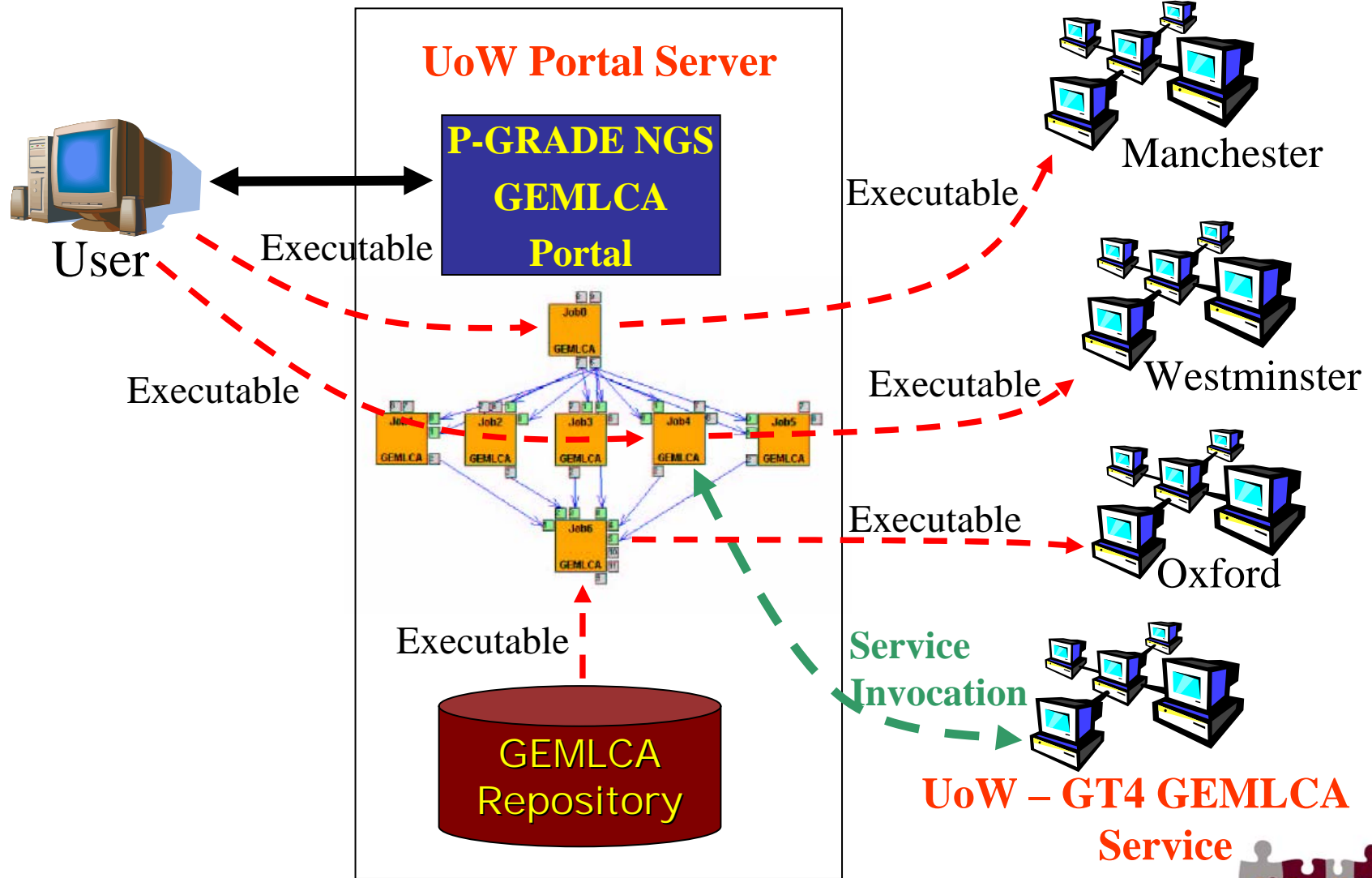
# Connecting Grids with the P-GRADE Portal and GEMMLCA

1. Extending current second generation production Grids with GT4 resources – **already in production on the UK NGS**
2. Connecting GT2 Grids (e.g. NGS) to GT4 Grids (e.g. OpenScience Grid, WestFocus Grid)
3. Connecting GT2 Grids (e.g. NGS) to the LCG-based EGEE Grid





# Extending the NGS with GT4 Resources





# Extending the NGS with GT4 Resources

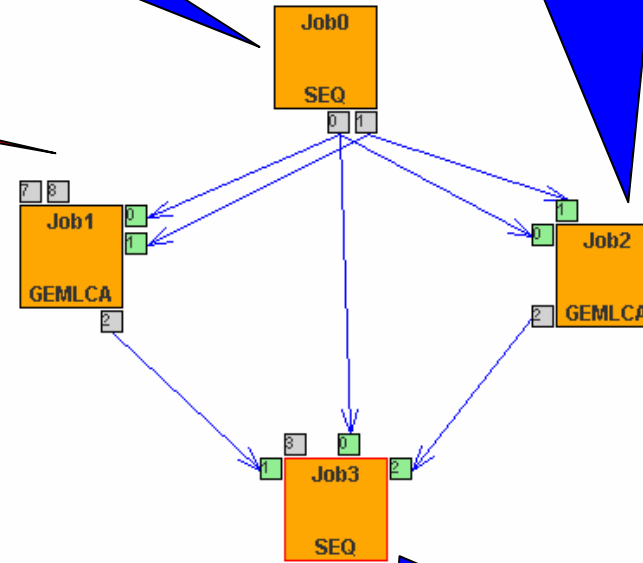
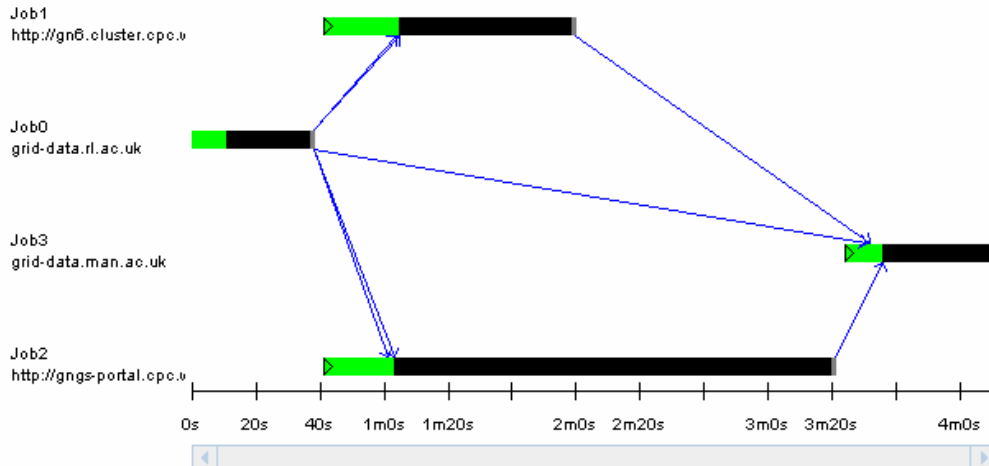
**GT4 Service Invocation at UoW**

**GT2 Job submission to Rutherford**

**GEMMLCA Legacy code submitted to Oxford**

workflow: GT2\_GT4\_GEMMLCA

Trace View Info

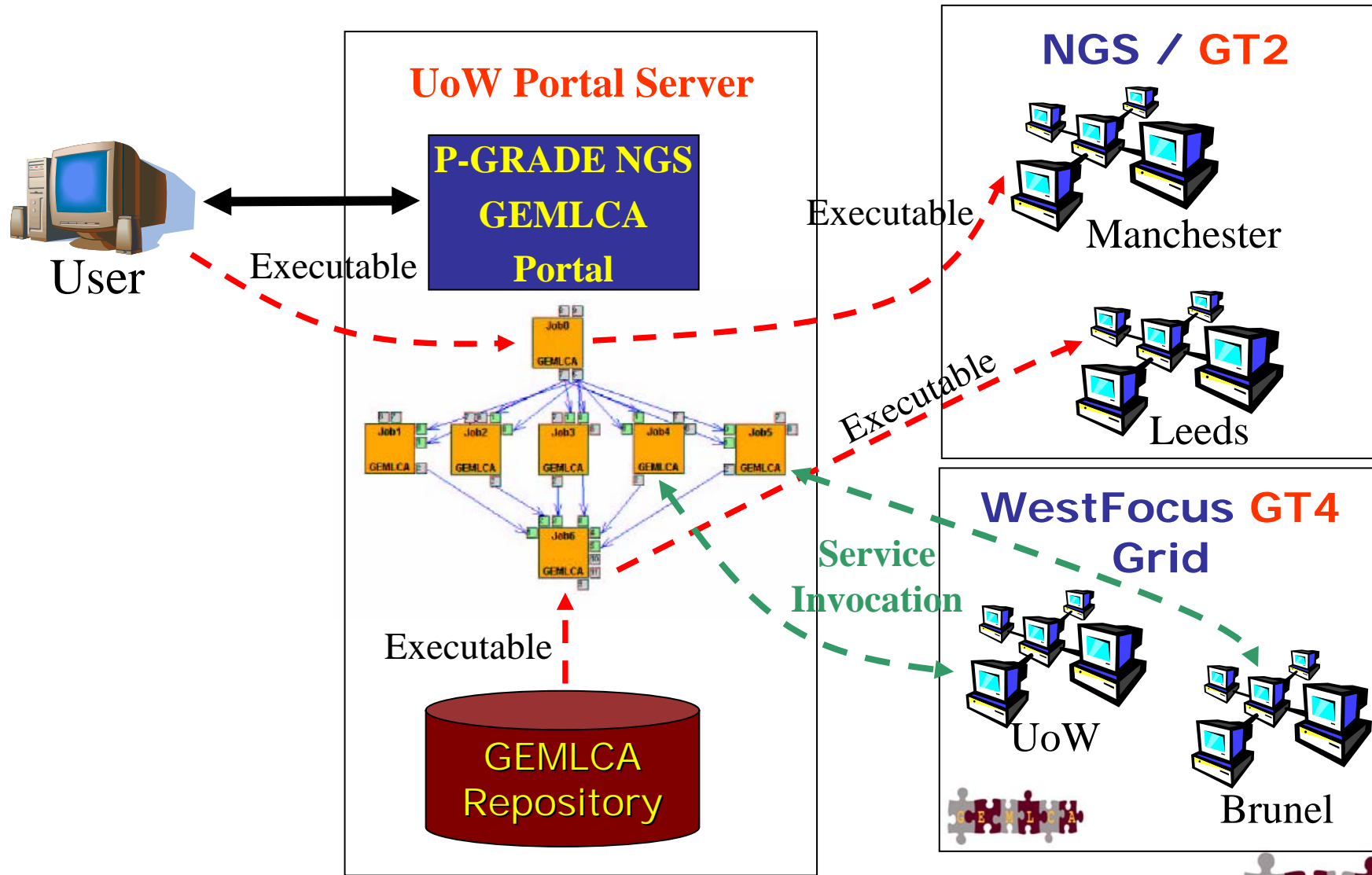


**GT2 Job mission to Manchester**



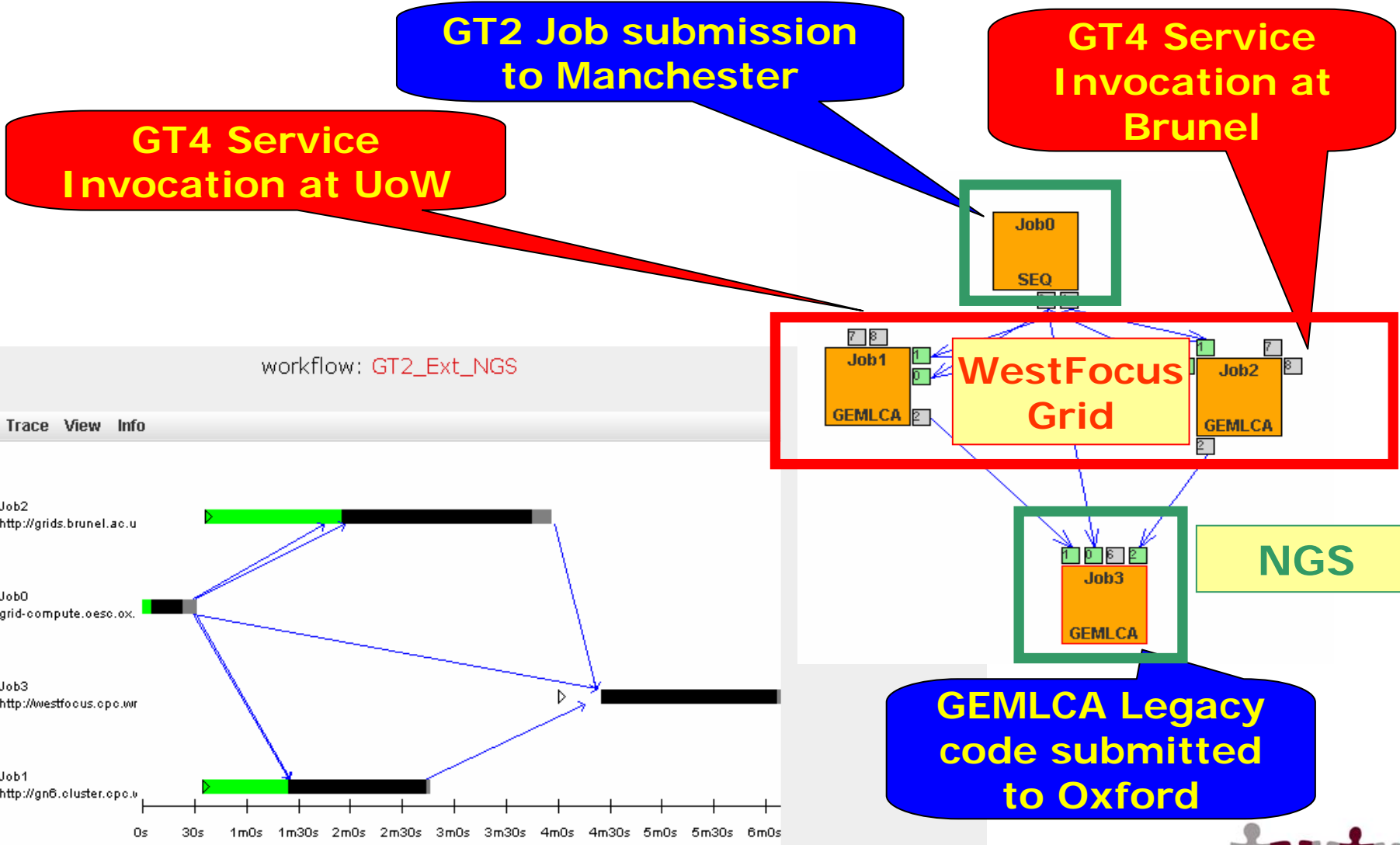


# Connecting the NGS to GT4 Grids





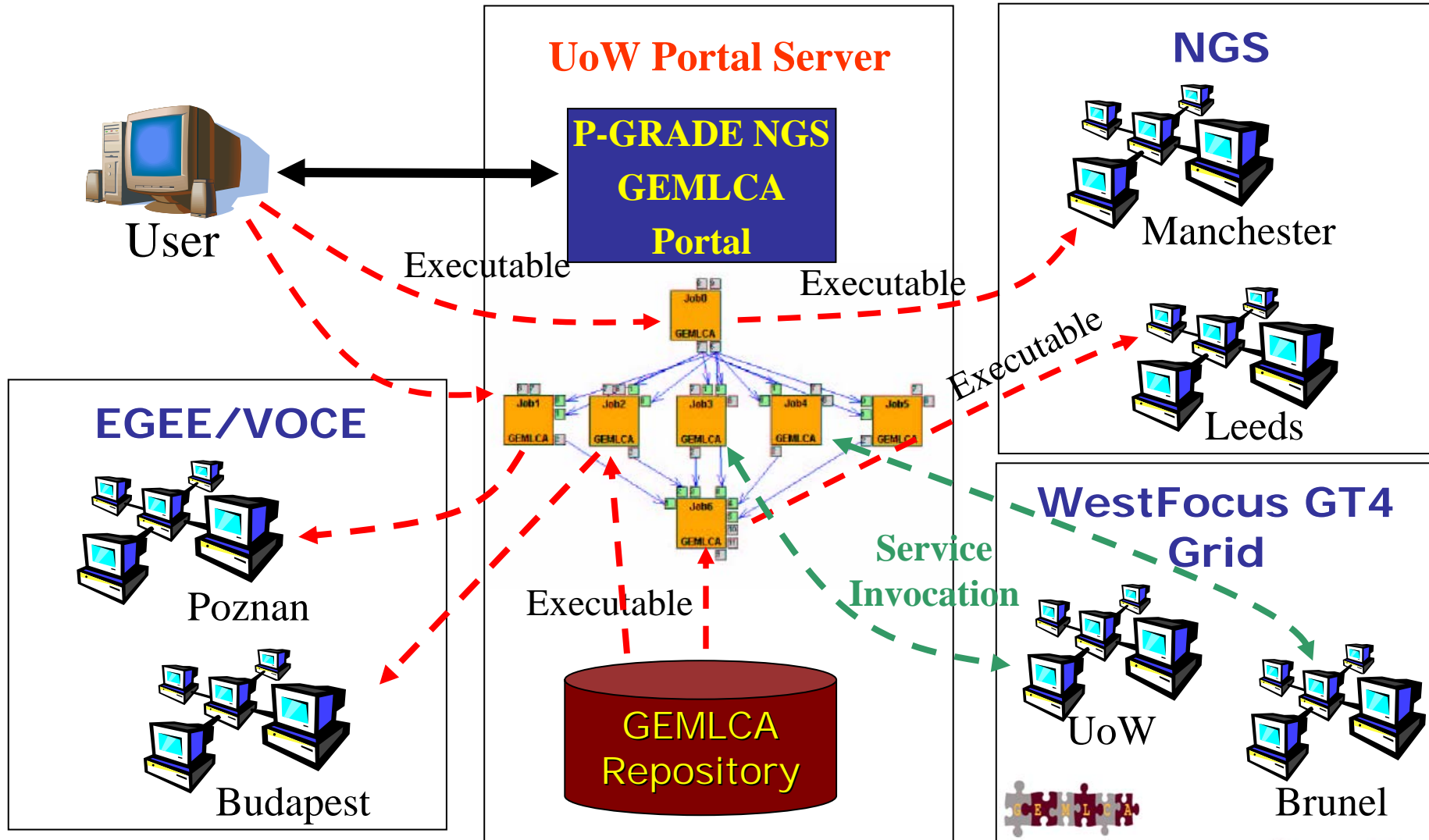
# Connecting the NGS to GT4 Grids







# Connecting the NGS to EGEE





# Connecting the NGS to EGEE

GT2 Job submission to Poznan

GEMMLCA legacy code submitted to Manchester

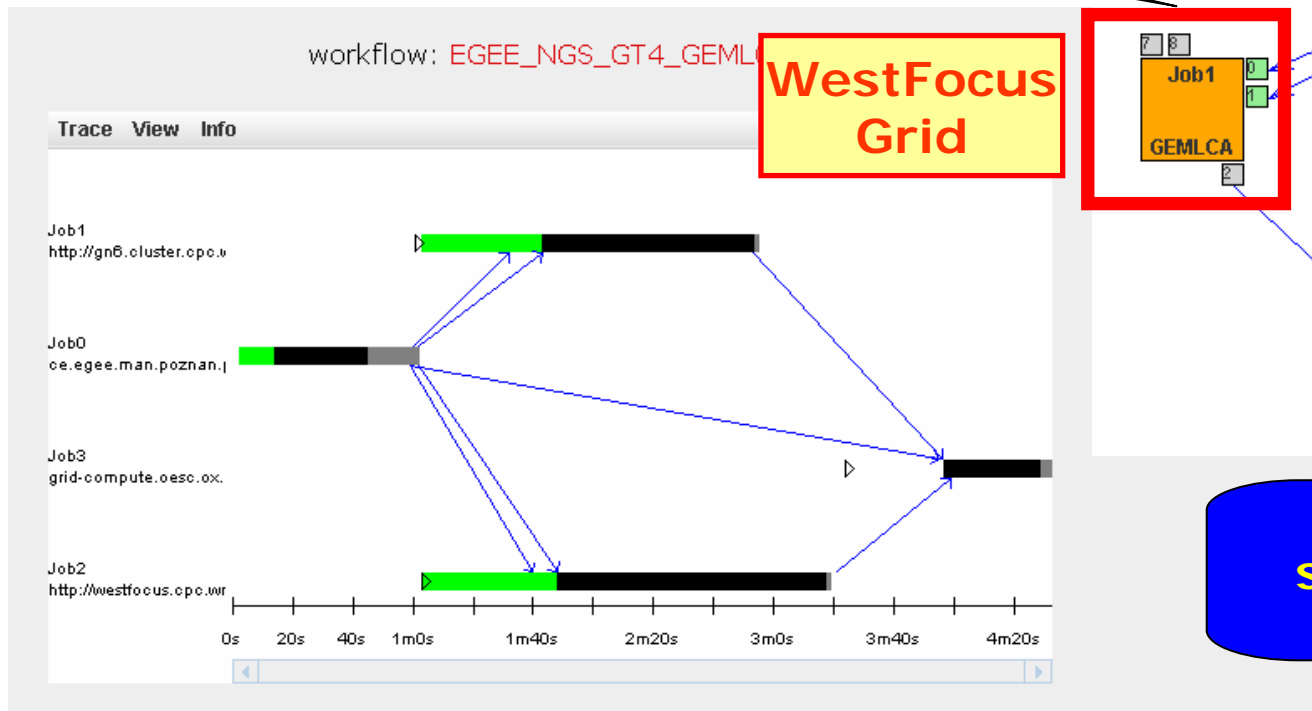
GT4 Service Invocation at UoW

EGEE

WestFocus Grid

NGS

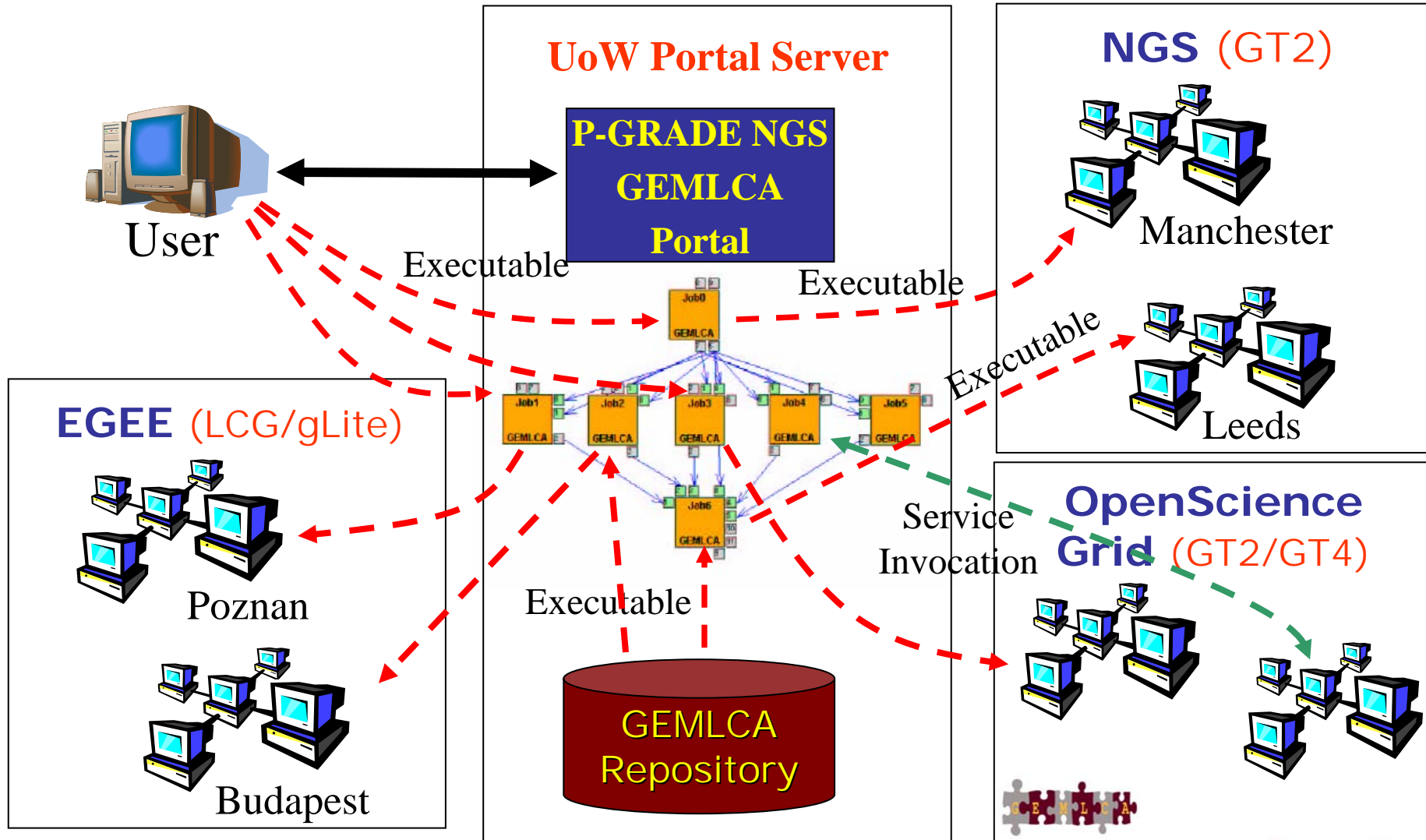
GT2 Job submission to Oxford







# The plan: Portal service for connecting all major production Grids





# Thank you for your attention ...

**Any  
questions?**

**Email:**

**[gemlca-discuss@cpc.wmin.ac.uk](mailto:gemlca-discuss@cpc.wmin.ac.uk)**

**Websites:**

**[www.cpc.wmin.ac.uk/gemlca](http://www.cpc.wmin.ac.uk/gemlca)**

**[www.lpds.sztaki.hu/pgportal](http://www.lpds.sztaki.hu/pgportal)**

**[www.cpc.wmin.ac.uk/ngsportal](http://www.cpc.wmin.ac.uk/ngsportal)**

