

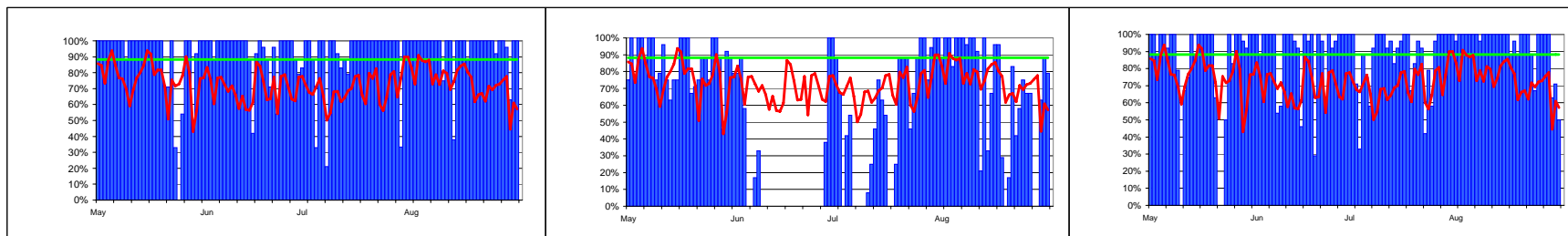


Availability of WLCG Tier-1 Sites + CERN

2006

Data from SAM monitoring. Site availability and reliability as agreed in WLCG MB on 11 July 2006 (scheduled interruptions are excluded when calculating reliability)

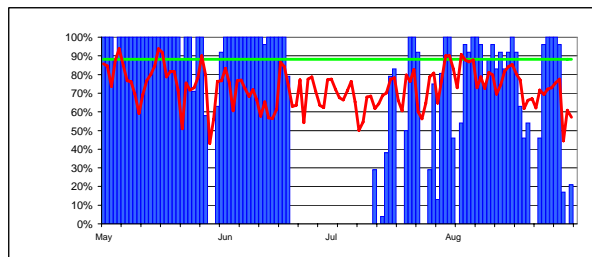
average (all sites) 73% target (90% of MoU) 88% site average colour coding: < 90% of target ≥ 90% of target ≥ target
sites meeting target 3 8 best sites 79% (90% of target)



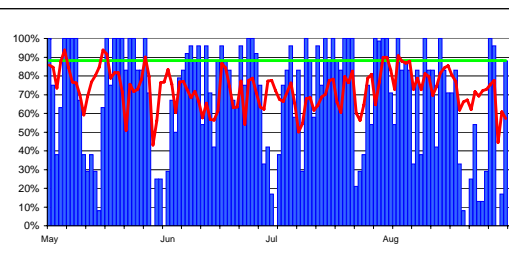
CERN-PROD average 92%

FZK-LCG2 average 57%

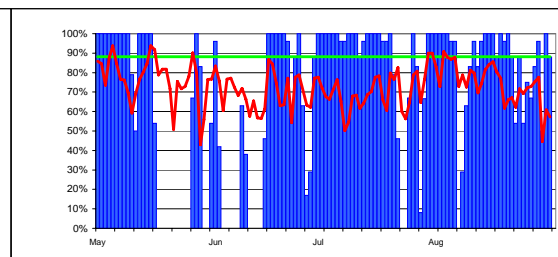
IN2P3-CC average 88%



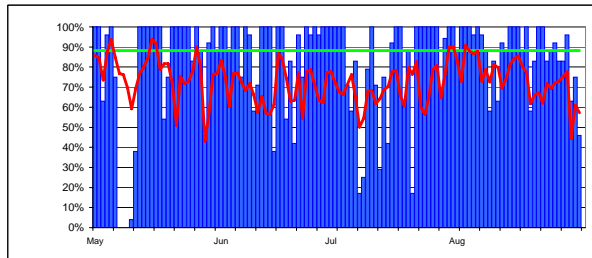
INFN-T1 average 63%



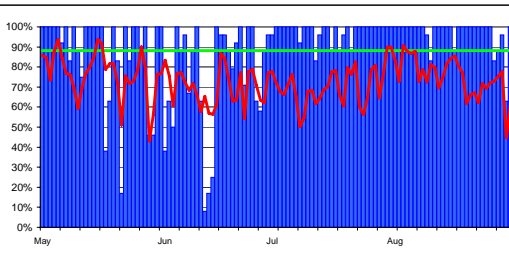
RAL-LCG2 average 69%



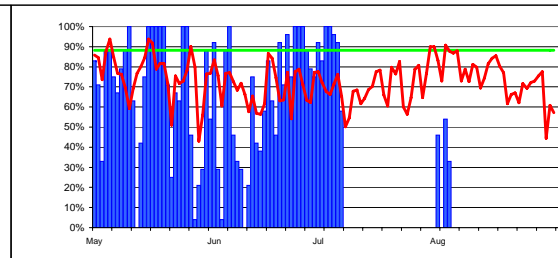
SARA-MATRIX average 69%



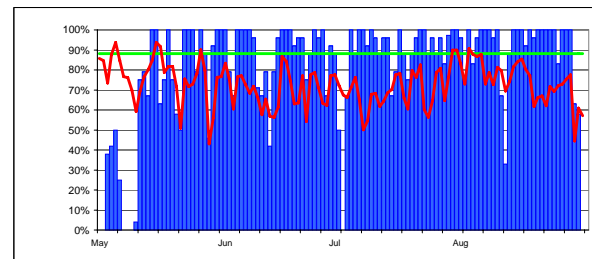
TRIUMF-LCG2 average 83%



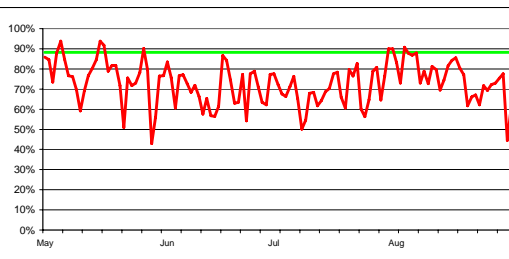
Taiwan-LCG2 average 90%



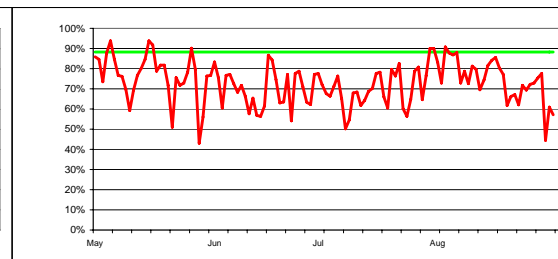
USCMS-FNAL-WC1 average 38%



PIC average 81%



BNL-LCG2 average n/a



NDGF average n/a

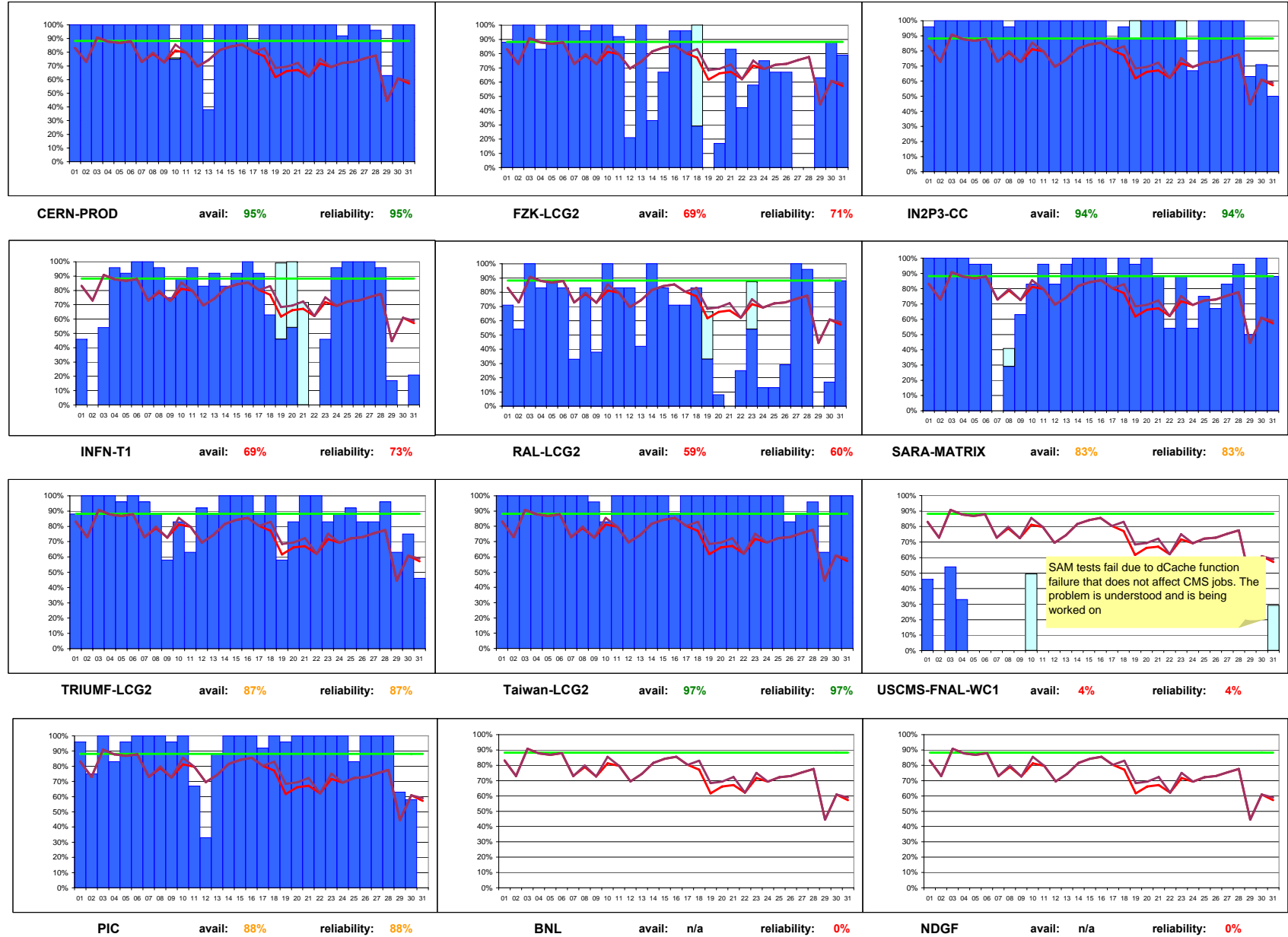


Availability of WLCG Tier-1 Sites + CERN August 2006

All sites assumed up while SAM had problems on 1, 3, 4 August

Data from SAM monitoring. Site availability and reliability as agreed in WLCG MB on 11 July 2006 (scheduled interruptions are excluded when calculating reliability)

legend: tests passed (blue bar), scheduled down (light blue bar), average (all sites): availability 74%, reliability 75%, target 88%, site average colour coding: < 90% of target (red), ≥ 90% of target (orange), ≥ target (green)
 average (8 best sites): availability 85%, reliability 86%



SAM tests fail due to dCache function failure that does not affect CMS jobs. The problem is understood and is being worked on



SAM - Service Availability Monitoring Data

August 2006

Colour coding limits: **≥TARGET:** 88%

≥90% OF TARGET: 79%

WLCG Tier-1s + CERN

Data from SAM monitoring. Site *availability* and *reliability* as agreed in WLCG MB on 11 July 2006 (*scheduled interruptions are excluded when calculating reliability*)

Date		CERN-PROD	FZK-LCG2	IN2P3-CC	INFN-T1	RAL-LCG2	SARA-MATRIX	TRIUMF-LCG2	Taiwan-LCG2	USCMS-FNAL WC1	PIC	average availability	target	BNL-LCG2	NDGF
01/08/2006	1	100%	88%	96%	46%	71%	100%	88%	100%	46%	96%	83%	88%	0%	0%
02/08/2006	2	100%	100%	100%	0%	54%	100%	100%	100%	0%	75%	73%	88%	0%	0%
03/08/2006	3	100%	100%	100%	54%	100%	100%	100%	100%	54%	100%	91%	88%	0%	0%
04/08/2006	4	100%	83%	100%	96%	83%	100%	100%	100%	33%	83%	88%	88%	0%	0%
05/08/2006	5	100%	100%	100%	92%	88%	96%	96%	100%	0%	96%	87%	88%	0%	0%
06/08/2006	6	100%	100%	100%	100%	83%	96%	100%	100%	0%	100%	88%	88%	0%	0%
07/08/2006	7	100%	100%	100%	100%	33%	0%	96%	100%	0%	100%	73%	88%	0%	0%
08/08/2006	8	100%	96%	96%	96%	83%	29%	88%	100%	0%	100%	79%	88%	0%	0%
09/08/2006	9	100%	100%	100%	75%	38%	63%	58%	96%	0%	96%	73%	88%	0%	0%
10/08/2006	10	75%	100%	100%	88%	100%	83%	83%	83%	0%	100%	81%	88%	0%	0%
11/08/2006	11	100%	92%	100%	96%	83%	96%	63%	100%	0%	67%	80%	88%	0%	0%
12/08/2006	12	100%	21%	100%	83%	83%	83%	92%	100%	0%	33%	70%	88%	0%	0%
13/08/2006	13	38%	100%	100%	92%	42%	96%	88%	100%	0%	88%	74%	88%	0%	0%
14/08/2006	14	100%	33%	100%	83%	100%	100%	100%	100%	0%	100%	82%	88%	0%	0%
15/08/2006	15	100%	67%	100%	92%	83%	100%	100%	100%	0%	100%	84%	88%	0%	0%
16/08/2006	16	100%	96%	100%	100%	71%	100%	100%	88%	0%	100%	86%	88%	0%	0%
17/08/2006	17	88%	96%	88%	92%	71%	88%	88%	100%	0%	92%	80%	88%	0%	0%
18/08/2006	18	100%	29%	96%	63%	83%	100%	100%	100%	0%	100%	77%	88%	0%	0%
19/08/2006	19	100%	0%	88%	46%	33%	96%	58%	100%	0%	96%	62%	88%	0%	0%
20/08/2006	20	100%	17%	100%	54%	8%	100%	83%	100%	0%	100%	66%	88%	0%	0%
21/08/2006	21	100%	83%	100%	0%	0%	88%	100%	100%	0%	100%	67%	88%	0%	0%
22/08/2006	22	100%	42%	100%	0%	25%	54%	100%	100%	0%	100%	62%	88%	0%	0%
23/08/2006	23	100%	58%	88%	46%	54%	88%	83%	100%	0%	100%	72%	88%	0%	0%
24/08/2006	24	100%	75%	67%	96%	13%	54%	88%	100%	0%	100%	69%	88%	0%	0%
25/08/2006	25	92%	67%	100%	100%	13%	75%	92%	100%	0%	83%	72%	88%	0%	0%
26/08/2006	26	100%	67%	100%	100%	29%	67%	83%	83%	0%	100%	73%	88%	0%	0%
27/08/2006	27	100%	0%	100%	100%	100%	83%	83%	88%	0%	100%	75%	88%	0%	0%
28/08/2006	28	96%	0%	100%	96%	96%	96%	96%	96%	0%	100%	78%	88%	0%	0%
29/08/2006	29	63%	63%	63%	17%	0%	50%	63%	63%	0%	63%	45%	88%	0%	0%
30/08/2006	30	100%	88%	71%	0%	17%	100%	75%	100%	0%	58%	61%	88%	0%	0%
31/08/2006	31	100%	79%	50%	21%	88%	88%	46%	100%	0%	0%	57%	88%	0%	0%
Average availability		95%	69%	94%	69%	59%	83%	87%	97%	4%	88%	74%	88%	0%	0%



Availability of WLCG Tier-1 Sites + CERN July 2006

29 July CERN power-off 08:00-24:00 - SAM failed through 31 July. Other sites that were active before and after power-off assumed to be fully available throughout power-off and SAM failure. Availability on 29 July before 08:00 adjusted pro-rata.

Data from SAM monitoring. Site availability and reliability as agreed in WLCG MB on 11 July 2006 (scheduled interruptions are excluded when calculating reliability)

legend:

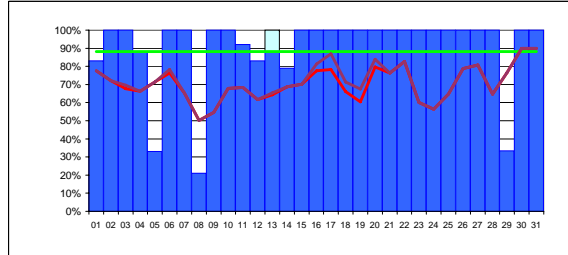
tests passed
scheduled down



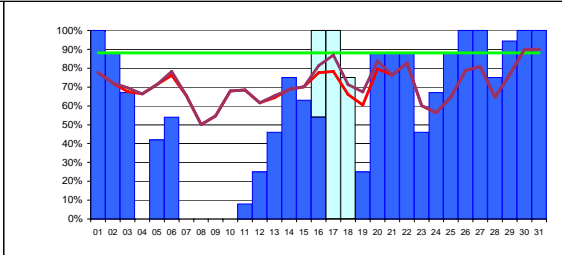
average (all sites):

availability 70%
reliability 72%
target 88%

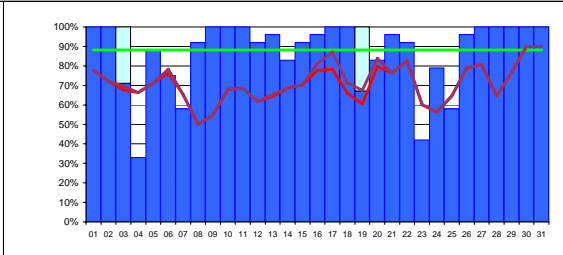
site average colour coding: < 90% of target ≥ 90% of target ≥ target



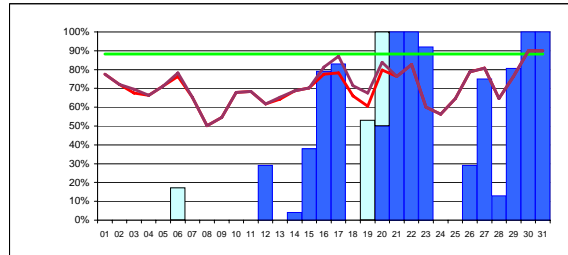
CERN-PROD avail: 90% reliability: 91%



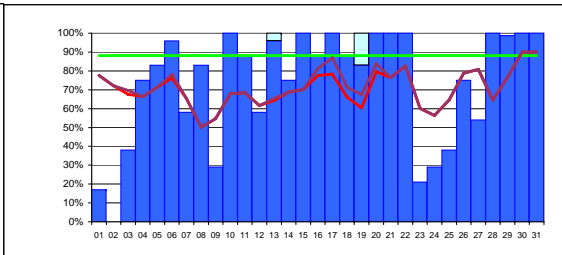
FZK-LCG2 avail: 54% reliability: 58%



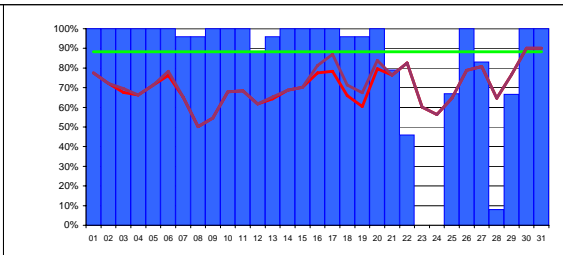
IN2P3-CC avail: 87% reliability: 89%



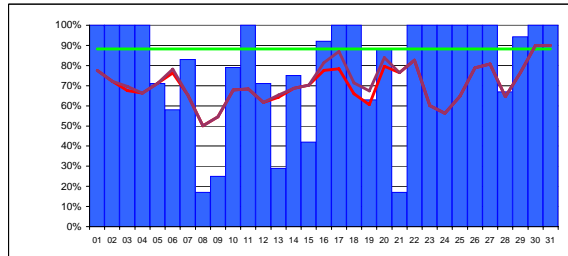
INFN-T1 avail: 31% reliability: 33%



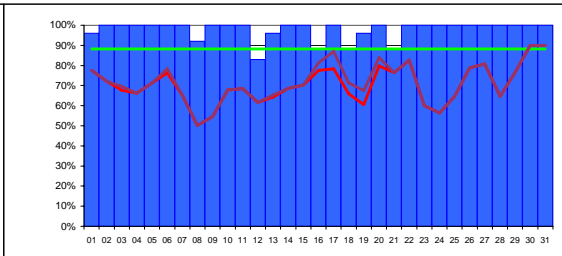
RAL-LCG2 avail: 73% reliability: 74%



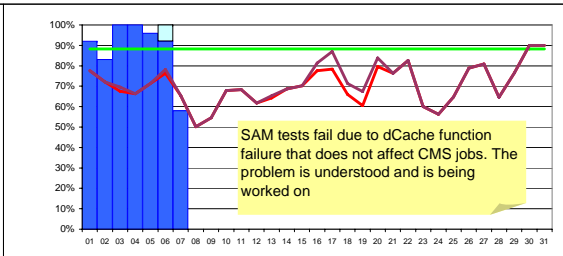
SARA-MATRIX avail: 84% reliability: 84%



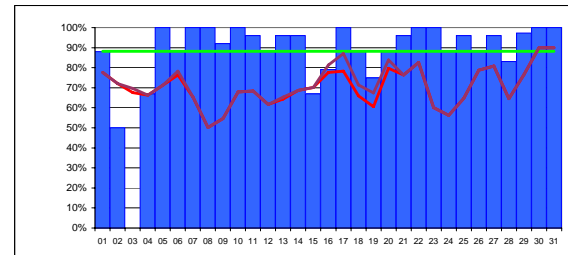
TRIUMF-LCG2 avail: 80% reliability: 80%



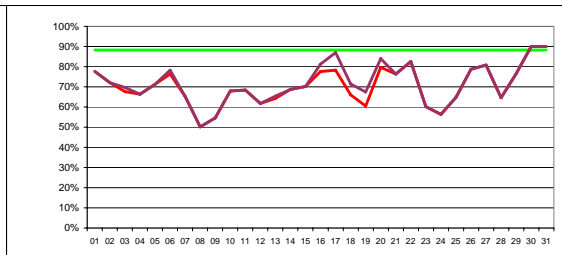
Taiwan-LCG2 avail: 98% reliability: 98%



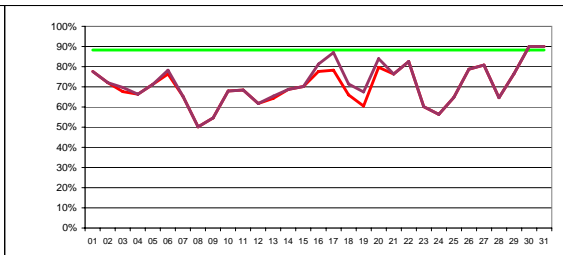
USCMS-FNAL-WC1 avail: 20% reliability: 20%



PIC avail: 87% reliability: 87%



BNL avail: n/a reliability: 0%



NDGF avail: n/a reliability: 0%



SAM - Service Availability Monitoring Data

July 2006

Colour coding limits: **≥TARGET:** 88%

≥90% OF TARGET: 79%

WLCG Tier-1s + CERN

Data from SAM monitoring. Site *availability* and *reliability* as agreed in WLCG MB on 11 July 2006 (*scheduled interruptions are excluded when calculating reliability*)

Date		CERN-PROD	FZK-LCG2	IN2P3-CC	INFN-T1	RAL-LCG2	SARA-MATRIX	TRIUMF-LCG2	Taiwan-LCG2	USCMS-FNAL WC1	PIC	average availability	target	BNL-LCG2	NDGF
01/07/2006	1	83%	100%	100%	0%	17%	100%	100%	96%	92%	88%	78%	88%	0%	0%
02/07/2006	2	100%	88%	100%	0%	0%	100%	100%	100%	100%	83%	50%	72%	88%	0%
03/07/2006	3	100%	67%	71%	0%	38%	100%	100%	100%	100%	0%	68%	88%	0%	0%
04/07/2006	4	88%	0%	33%	0%	75%	100%	100%	100%	100%	67%	66%	88%	0%	0%
05/07/2006	5	33%	42%	88%	0%	83%	100%	71%	100%	96%	100%	71%	88%	0%	0%
06/07/2006	6	100%	54%	75%	0%	96%	100%	58%	100%	92%	88%	76%	88%	0%	0%
07/07/2006	7	100%	0%	58%	0%	58%	96%	83%	100%	58%	100%	65%	88%	0%	0%
08/07/2006	8	21%	0%	92%	0%	83%	96%	17%	92%	0%	100%	50%	88%	0%	0%
09/07/2006	9	100%	0%	100%	0%	29%	100%	25%	100%	0%	92%	55%	88%	0%	0%
10/07/2006	10	100%	0%	100%	0%	100%	100%	79%	100%	0%	100%	68%	88%	0%	0%
11/07/2006	11	92%	8%	100%	0%	88%	100%	100%	100%	0%	96%	68%	88%	0%	0%
12/07/2006	12	83%	25%	92%	29%	58%	88%	71%	83%	0%	88%	62%	88%	0%	0%
13/07/2006	13	88%	46%	96%	0%	96%	96%	29%	96%	0%	96%	64%	88%	0%	0%
14/07/2006	14	79%	75%	83%	4%	75%	100%	75%	100%	0%	96%	69%	88%	0%	0%
15/07/2006	15	100%	63%	92%	38%	100%	100%	42%	100%	0%	67%	70%	88%	0%	0%
16/07/2006	16	100%	54%	96%	79%	88%	100%	92%	88%	0%	79%	78%	88%	0%	0%
17/07/2006	17	100%	0%	100%	83%	100%	100%	100%	100%	0%	100%	78%	88%	0%	0%
18/07/2006	18	100%	0%	100%	0%	88%	96%	100%	88%	0%	88%	66%	88%	0%	0%
19/07/2006	19	100%	25%	67%	0%	83%	96%	63%	96%	0%	75%	61%	88%	0%	0%
20/07/2006	20	100%	88%	83%	50%	100%	100%	88%	100%	0%	88%	80%	88%	0%	0%
21/07/2006	21	100%	88%	96%	100%	100%	79%	17%	88%	0%	96%	76%	88%	0%	0%
22/07/2006	22	100%	88%	92%	100%	100%	46%	100%	100%	0%	100%	83%	88%	0%	0%
23/07/2006	23	100%	46%	42%	92%	21%	0%	100%	100%	0%	100%	60%	88%	0%	0%
24/07/2006	24	100%	67%	79%	0%	29%	0%	100%	100%	0%	88%	56%	88%	0%	0%
25/07/2006	25	100%	88%	58%	0%	38%	67%	100%	100%	0%	96%	65%	88%	0%	0%
26/07/2006	26	100%	100%	96%	29%	75%	100%	100%	100%	0%	88%	79%	88%	0%	0%
27/07/2006	27	100%	100%	100%	75%	54%	83%	100%	100%	0%	96%	81%	88%	0%	0%
28/07/2006	28	100%	75%	100%	13%	100%	8%	67%	100%	0%	83%	65%	88%	0%	0%
29/07/2006	29	33%	94%	100%	81%	99%	67%	94%	100%	0%	97%	77%	88%	0%	0%
30/07/2006	30	100%	100%	100%	100%	100%	100%	100%	100%	0%	100%	90%	88%	0%	0%
31/07/2006	31	100%	100%	100%	100%	100%	100%	100%	100%	0%	100%	90%	88%	0%	0%
Average availability		90%	54%	87%	31%	73%	84%	80%	98%	20%	87%	70%	88%	0%	0%



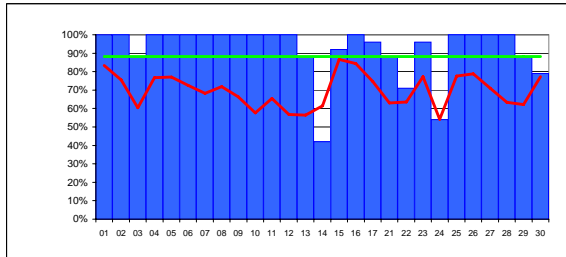
Availability of WLCG Tier-1 Sites + CERN June 2006

June 18-20 removed - SAM data loss

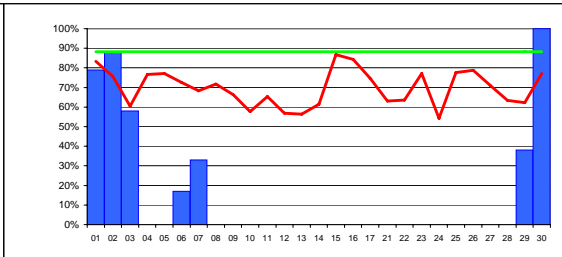
Data from SAM monitoring. Site availability as agreed in WLCG MB on 07mar06 and 04apr06. Service considered unavailable from time of first failure to time of next success Scheduled interruptions are considered as unavailable.

average (all sites) — 70% target — 88%

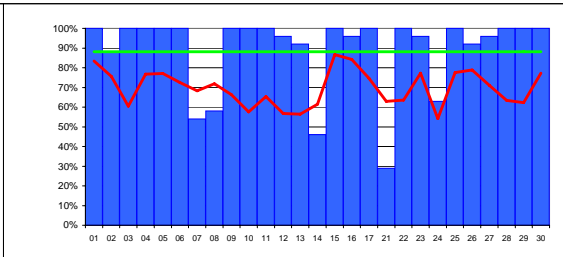
site average colour coding: < 90% of target ≥ 90% of target ≥ target



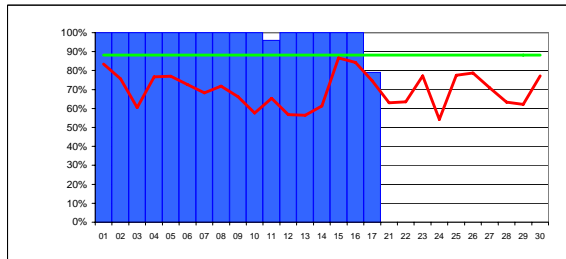
CERN-PROD average 92%



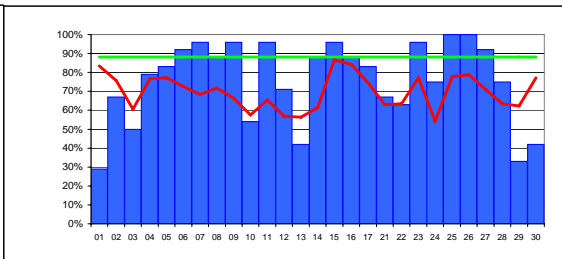
FZK-LCG2 average 15%



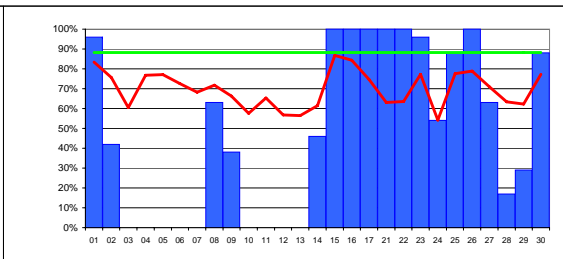
IN2P3-CC average 89%



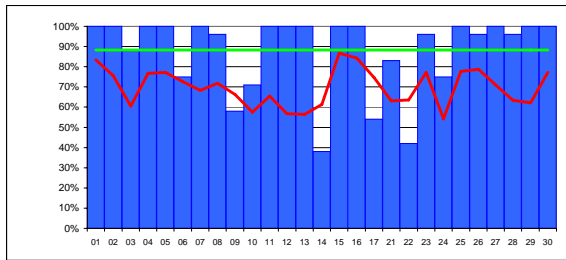
INFN-T1 average 62%



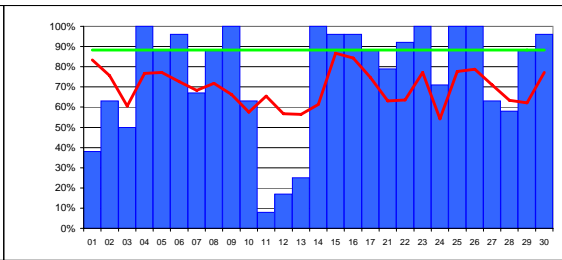
RAL-LCG2 average 76%



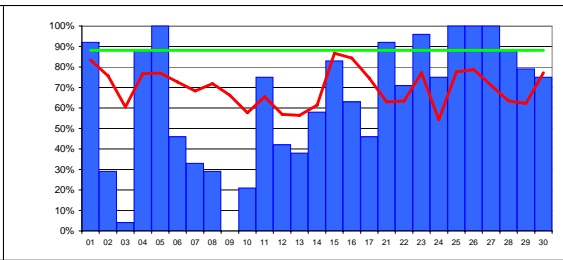
SARA-MATRIX average 49%



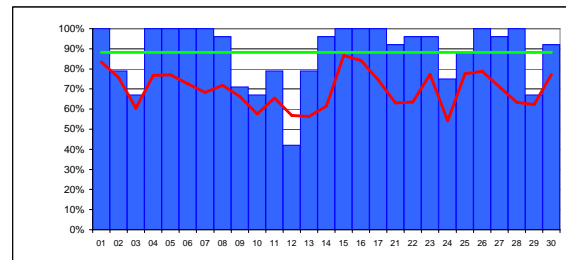
TRIUMF-LCG2 average 88%



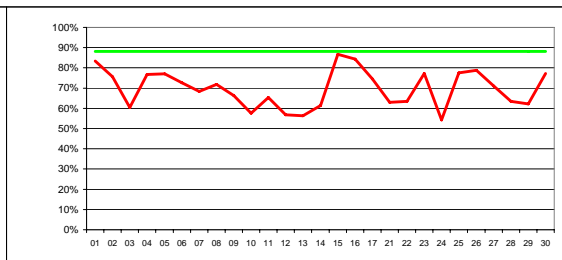
Taiwan-LCG2 average 75%



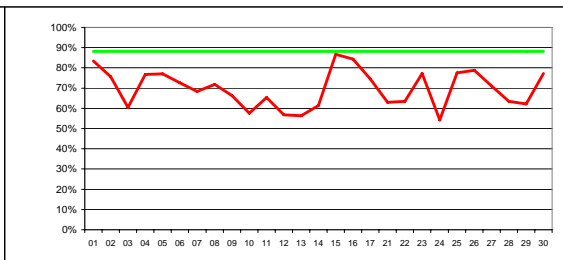
USCMS-FNAL-WC1 average 64%



PIC average 88%



BNL average n/a



NDGF average n/a



SAM - Service Availability Monitoring Data

June 2006

Colour coding limits: **≥TARGET:** 88%

90% OF TARGET: 79%

WLCG Tier-1s + CERN

Data from SAM monitoring. Site availability as agreed in WLCG MB on 07mar06 and 04apr06. Service considered unavailable from time of first failure to time of next success. **Scheduled interruptions are considered as unavailable.**

Date		CERN-PROD	FZK-LCG2	IN2P3-CC	INFN-T1	RAL-LCG2	SARA-MATRIX	TRIUMF-LCG2	Taiwan-LCG2	USCMS-FNAL WC1	PIC	average - all sites	target	BNL-LCG2	NDGF
01/06/2006	1	100%	79%	100%	100%	29%	96%	100%	38%	92%	100%	83%	88%	0%	0%
02/06/2006	2	100%	88%	88%	100%	67%	42%	100%	63%	29%	79%	76%	88%	0%	0%
03/06/2006	3	88%	58%	100%	100%	50%	0%	88%	50%	4%	67%	61%	88%	0%	0%
04/06/2006	4	100%	0%	100%	100%	79%	0%	100%	100%	88%	100%	77%	88%	0%	0%
05/06/2006	5	100%	0%	100%	100%	83%	0%	100%	88%	100%	100%	77%	88%	0%	0%
06/06/2006	6	100%	17%	100%	100%	92%	0%	75%	96%	46%	100%	73%	88%	0%	0%
07/06/2006	7	100%	33%	54%	100%	96%	0%	100%	67%	33%	100%	68%	88%	0%	0%
08/06/2006	8	100%	0%	58%	100%	88%	63%	96%	88%	29%	96%	72%	88%	0%	0%
09/06/2006	9	100%	0%	100%	100%	96%	38%	58%	100%	0%	71%	66%	88%	0%	0%
10/06/2006	10	100%	0%	100%	100%	54%	0%	71%	63%	21%	67%	58%	88%	0%	0%
11/06/2006	11	100%	0%	100%	96%	96%	0%	100%	8%	75%	79%	65%	88%	0%	0%
12/06/2006	12	100%	0%	96%	100%	71%	0%	100%	17%	42%	42%	57%	88%	0%	0%
13/06/2006	13	88%	0%	92%	100%	42%	0%	100%	25%	38%	79%	56%	88%	0%	0%
14/06/2006	14	42%	0%	46%	100%	88%	46%	38%	100%	58%	96%	61%	88%	0%	0%
15/06/2006	15	92%	0%	100%	100%	96%	100%	100%	96%	83%	100%	87%	88%	0%	0%
16/06/2006	16	100%	0%	96%	100%	88%	100%	100%	96%	63%	100%	84%	88%	0%	0%
17/06/2006	17	96%	0%	100%	79%	83%	100%	54%	88%	46%	100%	75%	88%	0%	0%
21/06/2006	21	88%	0%	29%	0%	67%	100%	83%	79%	92%	92%	63%	88%	0%	0%
22/06/2006	22	71%	0%	100%	0%	63%	100%	42%	92%	71%	96%	64%	88%	0%	0%
23/06/2006	23	96%	0%	96%	0%	96%	96%	96%	100%	96%	96%	77%	88%	0%	0%
24/06/2006	24	54%	0%	63%	0%	75%	54%	75%	71%	75%	75%	54%	88%	0%	0%
25/06/2006	25	100%	0%	100%	0%	100%	88%	100%	100%	100%	88%	78%	88%	0%	0%
26/06/2006	26	100%	0%	92%	0%	100%	100%	96%	100%	100%	100%	79%	88%	0%	0%
27/06/2006	27	100%	0%	96%	0%	92%	63%	100%	63%	100%	96%	71%	88%	0%	0%
28/06/2006	28	100%	0%	100%	0%	75%	17%	96%	58%	88%	100%	63%	88%	0%	0%
29/06/2006	29	88%	38%	100%	0%	33%	29%	100%	88%	79%	67%	62%	88%	0%	0%
30/06/2006	30	79%	100%	100%	0%	42%	88%	100%	96%	75%	92%	77%	88%	0%	0%
Average		92%	15%	89%	62%	76%	49%	88%	75%	64%	88%	70%	88%	0%	0%

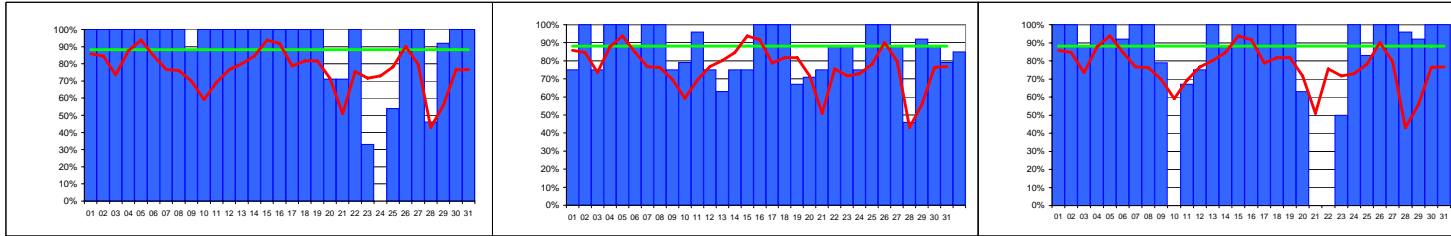


Availability of WLCG Tier-1 Sites + CERN May 2006

Data from SAM monitoring. Site availability as agreed in WLCG MB on 07mar06 and 04apr06. Service considered unavailable from time of first failure to time of next success. Scheduled interruptions are considered as unavailable.

average (all sites) — 77% — target 88%

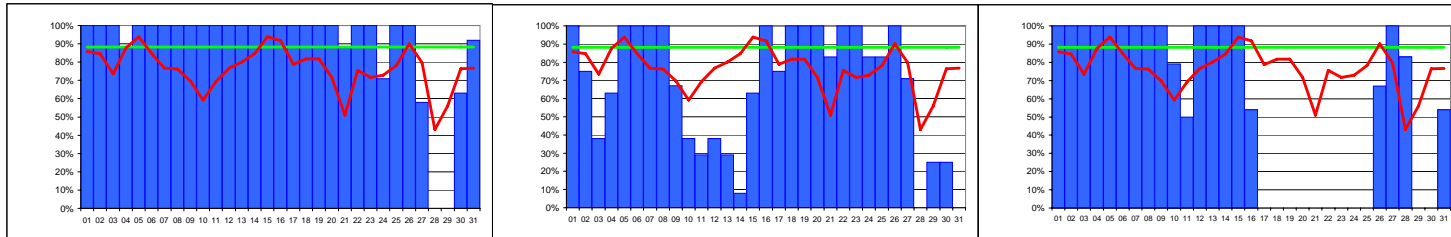
site average colour coding: < 90% of target ≥ 90% of target ≥ target



CERN-PROD average 89%

FZK-LCG2 average 85%

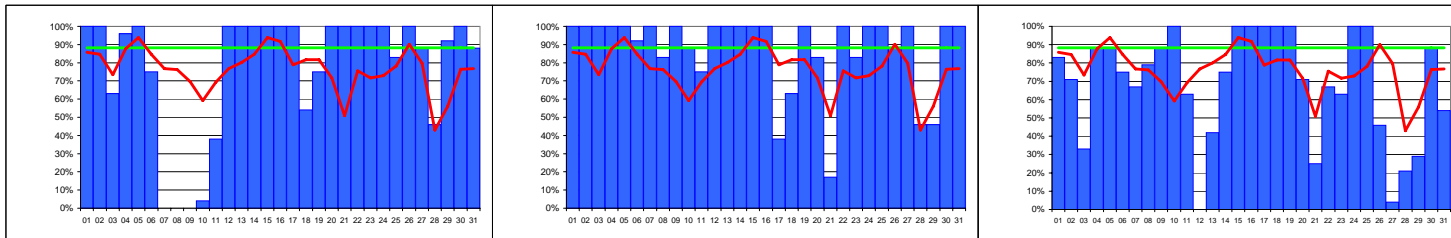
IN2P3-CC average 83%



INFN-T1 average 89%

RAL-LCG2 average 68%

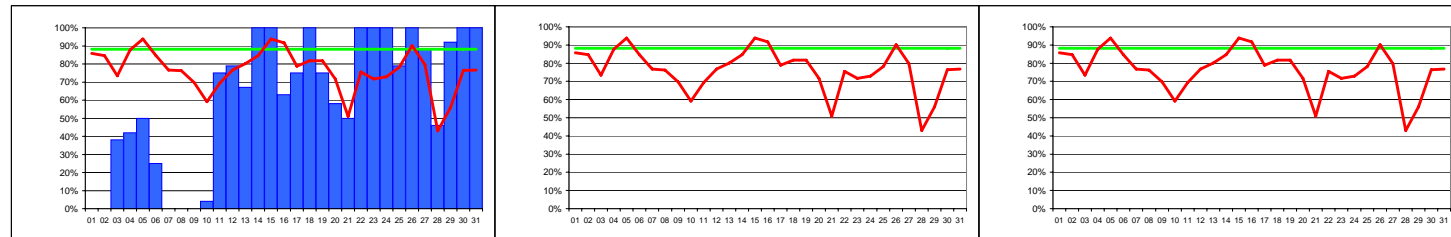
SARA-MATRIX average 58%



TRIUMF-LCG2 average 77%

Taiwan-LCG2 average 87%

USCMS-FNAL-WC1 average 68%



PIC average 61%

BNL average n/a

NDGF average n/a



SAM - Service Availability Monitoring Data

May 2006

Colour coding limits: \geq TARGET:

88%

90% OF
TARGET:

79%

WLCG Tier-1s + CERN

Data from SAM monitoring. Site availability as agreed in WLCG MB on 07mar06 and 04apr06. Service considered unavailable from time of first failure to time of next success. Scheduled interruptions are considered as unavailable.

Date		CERN-PROD	FZK-LCG2	IN2P3-CC	INFN-T1	RAL-LCG2	SARA-MATRIX	TRIUMF-LCG2	Taiwan-LCG2	USCMS-FNAL-WC1	PIC	average - all sites	target	BNL-LCG2	NDGF
01/05/2006	1	100%	75%	100%	100%	100%	100%	100%	100%	83%	0%	86%	88%	0%	0%
02/05/2006	2	100%	100%	100%	100%	75%	100%	100%	100%	71%	0%	85%	88%	0%	0%
03/05/2006	3	100%	75%	88%	100%	38%	100%	63%	100%	33%	38%	74%	88%	0%	0%
04/05/2006	4	100%	100%	100%	100%	63%	100%	96%	100%	88%	42%	88%	88%	0%	0%
05/05/2006	5	100%	100%	100%	100%	100%	100%	100%	100%	88%	50%	94%	88%	0%	0%
06/05/2006	6	100%	88%	92%	100%	100%	100%	75%	92%	75%	25%	85%	88%	0%	0%
07/05/2006	7	100%	100%	100%	100%	100%	100%	0%	100%	67%	0%	77%	88%	0%	0%
08/05/2006	8	100%	100%	100%	100%	100%	100%	0%	83%	79%	0%	76%	88%	0%	0%
09/05/2006	9	88%	75%	79%	100%	67%	100%	0%	100%	88%	0%	70%	88%	0%	0%
10/05/2006	10	100%	79%	0%	100%	38%	79%	4%	88%	100%	4%	59%	88%	0%	0%
11/05/2006	11	100%	96%	67%	100%	29%	50%	38%	75%	63%	75%	69%	88%	0%	0%
12/05/2006	12	100%	75%	75%	100%	38%	100%	100%	100%	0%	79%	77%	88%	0%	0%
13/05/2006	13	100%	63%	100%	100%	29%	100%	100%	100%	42%	67%	80%	88%	0%	0%
14/05/2006	14	100%	75%	88%	100%	8%	100%	100%	100%	75%	100%	85%	88%	0%	0%
15/05/2006	15	100%	75%	100%	100%	63%	100%	100%	100%	100%	100%	94%	88%	0%	0%
16/05/2006	16	100%	100%	100%	100%	100%	54%	100%	100%	100%	63%	92%	88%	0%	0%
17/05/2006	17	100%	100%	100%	100%	75%	0%	100%	38%	100%	75%	79%	88%	0%	0%
18/05/2006	18	100%	100%	100%	100%	100%	0%	54%	63%	100%	100%	82%	88%	0%	0%
19/05/2006	19	100%	67%	100%	100%	100%	0%	75%	100%	100%	75%	82%	88%	0%	0%
20/05/2006	20	71%	71%	63%	100%	100%	0%	100%	83%	71%	58%	72%	88%	0%	0%
21/05/2006	21	71%	75%	0%	88%	83%	0%	100%	17%	25%	50%	51%	88%	0%	0%
22/05/2006	22	100%	88%	0%	100%	100%	0%	100%	100%	67%	100%	76%	88%	0%	0%
23/05/2006	23	33%	88%	50%	100%	100%	0%	100%	83%	63%	100%	72%	88%	0%	0%
24/05/2006	24	0%	75%	100%	71%	83%	0%	100%	100%	100%	100%	73%	88%	0%	0%
25/05/2006	25	54%	100%	83%	100%	83%	0%	83%	100%	100%	79%	78%	88%	0%	0%
26/05/2006	26	100%	100%	100%	100%	100%	67%	100%	88%	46%	100%	90%	88%	0%	0%
27/05/2006	27	100%	88%	100%	58%	71%	100%	88%	100%	4%	88%	80%	88%	0%	0%
28/05/2006	28	46%	46%	96%	0%	0%	83%	46%	46%	21%	46%	43%	88%	0%	0%
29/05/2006	29	92%	92%	92%	0%	25%	0%	92%	46%	29%	92%	56%	88%	0%	0%
30/05/2006	30	100%	88%	100%	63%	25%	0%	100%	100%	88%	100%	76%	88%	0%	0%
31/05/2006	31	100%	79%	100%	92%	0%	54%	88%	100%	54%	100%	77%	88%	0%	0%
Average		89%	85%	83%	89%	68%	58%	77%	87%	68%	61%	77%	88%	0%	0%

Cumulative data

Colour coding \geq TARG
limits: ET: 88% 90% OF
TARGET 79%

Month	Date	CERN-PROD	FZK-LCG2	IN2P3-CC	INFN-T1	RAL-LCG2	SARA-MATRIX	TRIUMF-LCG2	Taiwan-LCG2	USCMS-FNAL-WC1	PIC	average - all sites	target	BNL-LCG2	NDGF	
May	#### 1	100%	75%	100%	100%	100%	100%	100%	100%	83%	0%	86%	88%	0%	0%	
	#### 2	100%	100%	100%	100%	75%	100%	100%	100%	71%	0%	85%	88%	0%	0%	
	#### 3	100%	75%	88%	100%	38%	100%	63%	100%	33%	38%	74%	88%	0%	0%	
	#### 4	100%	100%	100%	88%	63%	100%	96%	100%	88%	42%	88%	88%	0%	0%	
	#### 5	100%	100%	100%	100%	100%	100%	100%	100%	100%	88%	50%	94%	88%	0%	0%
	#### 6	100%	88%	92%	100%	100%	100%	100%	75%	92%	75%	25%	85%	88%	0%	0%
	#### 7	100%	100%	100%	100%	100%	100%	100%	0%	100%	67%	0%	77%	88%	0%	0%
	#### 8	100%	100%	100%	100%	100%	100%	100%	0%	83%	79%	0%	76%	88%	0%	0%
	#### 9	88%	75%	79%	100%	67%	100%	0%	100%	88%	0%	70%	88%	0%	0%	
	#### 10	100%	79%	0%	100%	38%	79%	4%	88%	100%	4%	59%	88%	0%	0%	
	#### 11	100%	96%	67%	100%	29%	50%	38%	75%	63%	75%	69%	88%	0%	0%	
	#### 12	100%	75%	75%	100%	38%	100%	100%	100%	0%	79%	77%	88%	0%	0%	
	#### 13	100%	63%	100%	100%	29%	100%	100%	100%	42%	67%	80%	88%	0%	0%	
	#### 14	100%	75%	88%	100%	8%	100%	100%	100%	75%	100%	85%	88%	0%	0%	
	#### 15	100%	75%	100%	100%	63%	100%	100%	100%	100%	100%	94%	88%	0%	0%	
	#### 16	100%	100%	100%	100%	100%	54%	100%	100%	100%	63%	92%	88%	0%	0%	
	#### 17	100%	100%	100%	100%	75%	0%	100%	38%	100%	75%	79%	88%	0%	0%	
	#### 18	100%	100%	100%	100%	100%	0%	54%	63%	100%	100%	82%	88%	0%	0%	
	#### 19	100%	67%	100%	100%	100%	0%	75%	100%	100%	75%	82%	88%	0%	0%	
	#### 20	71%	71%	63%	100%	100%	0%	100%	83%	71%	58%	72%	88%	0%	0%	
	#### 21	71%	75%	0%	88%	83%	0%	100%	17%	25%	50%	51%	88%	0%	0%	
	#### 22	100%	88%	0%	100%	100%	0%	100%	100%	67%	100%	76%	88%	0%	0%	
	#### 23	33%	88%	50%	100%	100%	0%	100%	83%	63%	100%	72%	88%	0%	0%	
	#### 24	0%	75%	100%	71%	83%	0%	100%	100%	100%	100%	73%	88%	0%	0%	
	#### 25	54%	100%	83%	100%	83%	0%	83%	100%	100%	79%	78%	88%	0%	0%	
	#### 26	100%	100%	100%	100%	100%	67%	100%	100%	88%	46%	100%	90%	88%	0%	0%
	#### 27	100%	88%	100%	58%	71%	100%	88%	100%	4%	88%	80%	88%	0%	0%	
	#### 28	46%	46%	96%	0%	0%	83%	46%	46%	21%	46%	43%	88%	0%	0%	
	#### 29	92%	92%	92%	0%	25%	0%	92%	46%	29%	92%	56%	88%	0%	0%	
	#### 30	100%	88%	100%	63%	25%	0%	100%	100%	88%	100%	76%	88%	0%	0%	
	#### 31	100%	79%	100%	92%	0%	54%	88%	100%	54%	100%	77%	88%	0%	0%	
Jun	#### 1	100%	79%	100%	100%	29%	96%	100%	38%	92%	100%	83%	88%	0%	0%	
	#### 2	100%	88%	88%	100%	67%	42%	100%	63%	29%	79%	76%	88%	0%	0%	
	#### 3	88%	58%	100%	100%	50%	0%	88%	50%	4%	67%	61%	88%	0%	0%	
	#### 4	100%	0%	100%	100%	79%	0%	100%	100%	88%	100%	77%	88%	0%	0%	
	#### 5	100%	0%	100%	100%	83%	0%	100%	88%	100%	100%	77%	88%	0%	0%	
	#### 6	100%	17%	100%	100%	92%	0%	75%	96%	46%	100%	73%	88%	0%	0%	
	#### 7	100%	33%	54%	100%	96%	0%	100%	67%	33%	100%	68%	88%	0%	0%	
	#### 8	100%	0%	58%	100%	88%	63%	96%	88%	29%	96%	72%	88%	0%	0%	
	#### 9	100%	0%	100%	100%	96%	38%	58%	100%	0%	71%	66%	88%	0%	0%	
	#### 10	100%	0%	100%	100%	54%	0%	71%	63%	21%	67%	58%	88%	0%	0%	
	#### 11	100%	0%	100%	96%	96%	0%	100%	8%	75%	79%	65%	88%	0%	0%	
	#### 12	100%	0%	96%	100%	71%	0%	100%	17%	42%	42%	57%	88%	0%	0%	
	#### 13	88%	0%	92%	100%	42%	0%	100%	25%	38%	79%	56%	88%	0%	0%	
	#### 14	42%	0%	46%	100%	88%	46%	38%	100%	58%	96%	61%	88%	0%	0%	
	#### 15	92%	0%	100%	100%	96%	100%	100%	96%	83%	100%	87%	88%	0%	0%	
	#### 16	100%	0%	96%	100%	88%	100%	100%	96%	63%	100%	84%	88%	0%	0%	

Month	Date		CERN-PROD	FZK-LCG2	IN2P3-CC	INFN-T1	RAL-LCG2	SARA-MATRIX	TRIUMF-LCG2	Taiwan-LCG2	USCMS-FNAL-WC1	PIC	average - all sites	target	BNL-LCG2	NDGF
Jul	####	17	96%	0%	100%	79%	83%	100%	54%	88%	46%	100%	75%	88%	0%	0%
	####	21	88%	0%	29%	0%	67%	100%	83%	79%	92%	92%	63%	88%	0%	0%
	####	22	71%	0%	100%	0%	63%	100%	42%	92%	71%	96%	64%	88%	0%	0%
	####	23	96%	0%	96%	0%	96%	96%	96%	100%	96%	96%	77%	88%	0%	0%
	####	24	54%	0%	63%	0%	75%	54%	75%	71%	75%	75%	54%	88%	0%	0%
	####	25	100%	0%	100%	0%	100%	88%	100%	100%	100%	88%	78%	88%	0%	0%
	####	26	100%	0%	92%	0%	100%	100%	96%	100%	100%	100%	79%	88%	0%	0%
	####	27	100%	0%	96%	0%	92%	63%	100%	63%	100%	96%	71%	88%	0%	0%
	####	28	100%	0%	100%	0%	75%	17%	96%	58%	88%	100%	63%	88%	0%	0%
	####	29	88%	38%	100%	0%	33%	29%	100%	88%	79%	67%	62%	88%	0%	0%
	####	30	79%	100%	100%	0%	42%	88%	100%	96%	75%	92%	77%	88%	0%	0%
	####	1	83%	100%	100%	0%	17%	100%	100%	96%	92%	88%	78%	88%	0%	0%
	####	2	100%	88%	100%	0%	0%	100%	100%	100%	83%	50%	72%	88%	0%	0%
	####	3	100%	67%	71%	0%	38%	100%	100%	100%	100%	0%	68%	88%	0%	0%
	####	4	88%	0%	33%	0%	75%	100%	100%	100%	100%	67%	66%	88%	0%	0%
	####	5	33%	42%	88%	0%	83%	100%	71%	100%	96%	100%	71%	88%	0%	0%
	####	6	100%	54%	75%	0%	96%	100%	58%	100%	92%	88%	76%	88%	0%	0%
	####	7	100%	0%	58%	0%	58%	96%	83%	100%	58%	100%	65%	88%	0%	0%
	####	8	21%	0%	92%	0%	83%	96%	17%	92%	0%	100%	50%	88%	0%	0%
	####	9	100%	0%	100%	0%	29%	100%	25%	100%	0%	92%	55%	88%	0%	0%
	####	10	100%	0%	100%	0%	100%	100%	79%	100%	0%	100%	68%	88%	0%	0%
	####	11	92%	8%	100%	0%	88%	100%	100%	100%	0%	96%	68%	88%	0%	0%
	####	12	83%	25%	92%	29%	58%	88%	71%	83%	0%	88%	62%	88%	0%	0%
	####	13	88%	46%	96%	0%	96%	96%	29%	96%	0%	96%	64%	88%	0%	0%
	####	14	79%	75%	83%	4%	75%	100%	75%	100%	0%	96%	69%	88%	0%	0%
	####	15	100%	63%	92%	38%	100%	100%	42%	100%	0%	67%	70%	88%	0%	0%
	####	16	100%	54%	96%	79%	88%	100%	92%	88%	0%	79%	78%	88%	0%	0%
	####	17	100%	0%	100%	83%	100%	100%	100%	100%	0%	100%	78%	88%	0%	0%
	####	18	100%	0%	100%	0%	88%	96%	100%	88%	0%	88%	66%	88%	0%	0%
	####	19	100%	25%	67%	0%	83%	96%	63%	96%	0%	75%	61%	88%	0%	0%
####	20	100%	88%	83%	50%	100%	100%	88%	100%	0%	88%	80%	88%	0%	0%	
####	21	100%	88%	96%	100%	100%	79%	17%	88%	0%	96%	76%	88%	0%	0%	
####	22	100%	88%	92%	100%	100%	46%	100%	100%	0%	100%	83%	88%	0%	0%	
####	23	100%	46%	42%	92%	21%	0%	100%	100%	0%	100%	60%	88%	0%	0%	
####	24	100%	67%	79%	0%	29%	0%	100%	100%	0%	88%	56%	88%	0%	0%	
####	25	100%	88%	58%	0%	38%	67%	100%	100%	0%	96%	65%	88%	0%	0%	
####	26	100%	100%	96%	29%	75%	100%	100%	100%	0%	88%	79%	88%	0%	0%	
####	27	100%	100%	100%	75%	54%	83%	100%	100%	0%	96%	81%	88%	0%	0%	
####	28	100%	75%	100%	13%	100%	8%	67%	100%	0%	83%	65%	88%	0%	0%	
####	29	33%	94%	100%	81%	99%	67%	94%	100%	0%	97%	77%	88%	0%	0%	
####	30	100%	100%	100%	100%	100%	100%	100%	100%	0%	100%	90%	88%	0%	0%	
Aug	####	31	100%	100%	100%	100%	100%	100%	100%	0%	100%	90%	88%	0%	0%	
	####	1	100%	88%	96%	46%	71%	100%	88%	100%	46%	96%	83%	88%	0%	0%
	####	2	100%	100%	100%	0%	54%	100%	100%	100%	0%	75%	73%	88%	0%	0%
	####	3	100%	100%	100%	54%	100%	100%	100%	100%	54%	100%	91%	88%	0%	0%
	####	4	100%	83%	100%	96%	83%	100%	100%	100%	33%	83%	88%	88%	0%	0%
	####	5	100%	100%	100%	92%	88%	96%	96%	100%	0%	96%	87%	88%	0%	0%
	####	6	100%	100%	100%	100%	83%	96%	100%	100%	0%	100%	88%	88%	0%	0%
####	7	100%	100%	100%	100%	33%	0%	96%	100%	0%	100%	73%	88%	0%	0%	

Month	Date	CERN-PROD	FZK-LCG2	IN2P3-CC	INFN-T1	RAL-LCG2	SARA-MATRIX	TRIUMF-LCG2	Taiwan-LCG2	USCMS-FNAL-WC1	PIC	average - all sites	target	BNL-LCG2	NDGF
####	8	100%	96%	96%	96%	83%	29%	88%	100%	0%	100%	79%	88%	0%	0%
####	9	100%	100%	100%	75%	38%	63%	58%	96%	0%	96%	73%	88%	0%	0%
####	10	75%	100%	100%	88%	100%	83%	83%	83%	0%	100%	81%	88%	0%	0%
####	11	100%	92%	100%	96%	83%	96%	63%	100%	0%	67%	80%	88%	0%	0%
####	12	100%	21%	100%	83%	83%	83%	92%	100%	0%	33%	70%	88%	0%	0%
####	13	38%	100%	100%	92%	42%	96%	88%	100%	0%	88%	74%	88%	0%	0%
####	14	100%	33%	100%	83%	100%	100%	100%	100%	0%	100%	82%	88%	0%	0%
####	15	100%	67%	100%	92%	83%	100%	100%	100%	0%	100%	84%	88%	0%	0%
####	16	100%	96%	100%	100%	71%	100%	100%	88%	0%	100%	86%	88%	0%	0%
####	17	88%	96%	88%	92%	71%	88%	88%	100%	0%	92%	80%	88%	0%	0%
####	18	100%	29%	96%	63%	83%	100%	100%	100%	0%	100%	77%	88%	0%	0%
####	19	100%	0%	88%	46%	33%	96%	58%	100%	0%	96%	62%	88%	0%	0%
####	20	100%	17%	100%	54%	8%	100%	83%	100%	0%	100%	66%	88%	0%	0%
####	21	100%	83%	100%	0%	0%	88%	100%	100%	0%	100%	67%	88%	0%	0%
####	22	100%	42%	100%	0%	25%	54%	100%	100%	0%	100%	62%	88%	0%	0%
####	23	100%	58%	88%	46%	54%	88%	83%	100%	0%	100%	72%	88%	0%	0%
####	24	100%	75%	67%	96%	13%	54%	88%	100%	0%	100%	69%	88%	0%	0%
####	25	92%	67%	100%	100%	13%	75%	92%	100%	0%	83%	72%	88%	0%	0%
####	26	100%	67%	100%	100%	29%	67%	83%	83%	0%	100%	73%	88%	0%	0%
####	27	100%	0%	100%	100%	100%	83%	83%	88%	0%	100%	75%	88%	0%	0%
####	28	96%	0%	100%	96%	96%	96%	96%	96%	0%	100%	78%	88%	0%	0%
####	29	63%	63%	63%	17%	0%	50%	63%	63%	0%	63%	45%	88%	0%	0%
####	30	100%	88%	71%	0%	17%	100%	75%	100%	0%	58%	61%	88%	0%	0%
####	31	100%	79%	50%	21%	88%	88%	46%	100%	0%	0%	57%	88%	0%	0%

Leave above line blank - this is the end of the range used to generate the graphics. Insert new data before this line

Days in range	120														
---------------	-----	--	--	--	--	--	--	--	--	--	--	--	--	--	--

Site availability

	CERN-PROD	FZK-LCG2	IN2P3-CC	INFN-T1	RAL-LCG2	SARA-MATRIX	TRIUMF-LCG2	Taiwan-LCG2	USCMS-FNAL-WC1	PIC	average - all sites	8 best availability	8 best reliability	target
May	89%	85%	83%	89%	68%	58%	77%	87%	68%	61%	77%	81%	-	88%
June	92%	15%	89%	62%	76%	49%	88%	75%	64%	88%	70%	79%	-	88%
July	90%	54%	87%	31%	73%	84%	80%	98%	20%	87%	70%	82%	83%	88%
August	95%	69%	94%	69%	59%	83%	87%	97%	4%	88%	74%	85%	86%	88%
average	92%	57%	88%	63%	69%	69%	83%	90%	38%	81%	73%	79%		88%

target (90% of MoU)	88%	# sites meeting target	3	8 best site avge as % of target	90%
90% of target	79%	# sites > than 90% of target	5		