



Availability of WLCG Tier-1 Sites + CERN October 2006

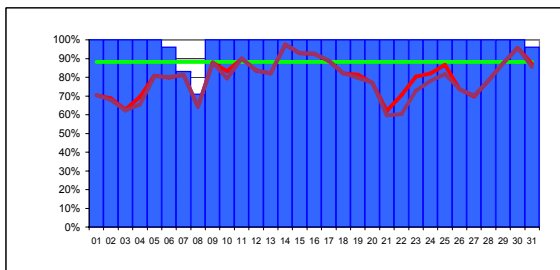
The VO used for the tests was being changed during September from dTeam to OPS. This month only the best result each day for either of these two VOs is used.

Data from SAM monitoring. Site reliability and availability as agreed in WLCG MB on 11 July 2006 (scheduled interruptions are excluded when calculating reliability)

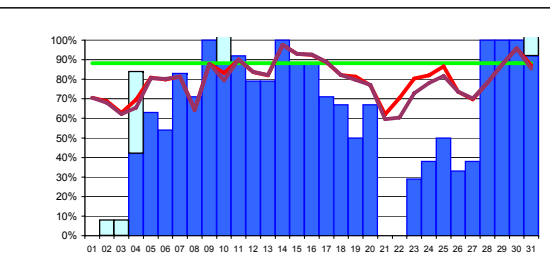
legend: tests passed (blue bar), scheduled down (light blue bar)

availability (red line), reliability (purple line), target (green line) 88%
 average (all sites): availability 79%, reliability 81%
 average (8 best sites): availability 83%, reliability 83%

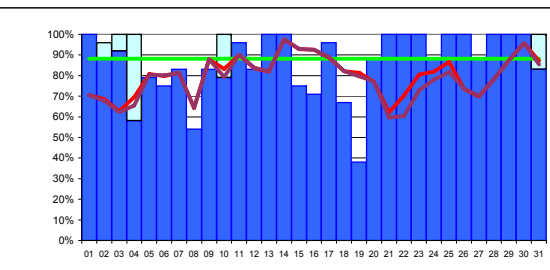
site average colour coding: < 90% of target (red), ≥ 90% of target (orange), ≥ target (green)



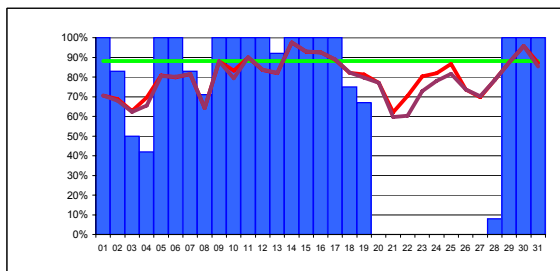
CERN-PROD avail: 98% reliability: 98%



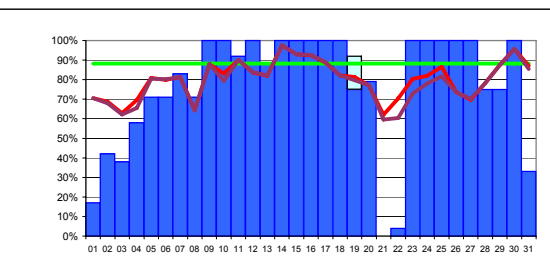
FZK-LCG2 avail: 60% reliability: 64%



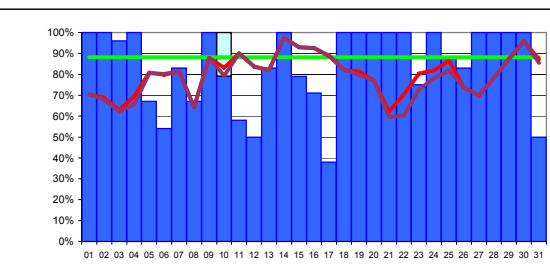
IN2P3-CC avail: 86% reliability: 89%



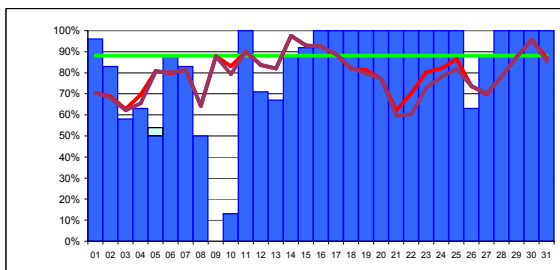
INFN-T1 avail: 64% reliability: 62%



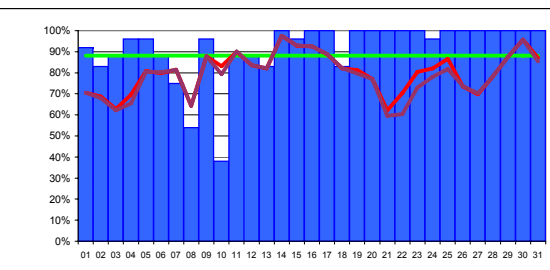
RAL-LCG2 avail: 77% reliability: 79%



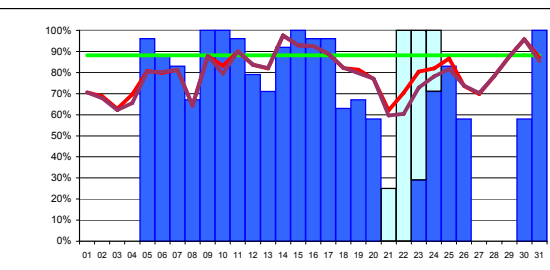
SARA-MATRIX avail: 85% reliability: 85%



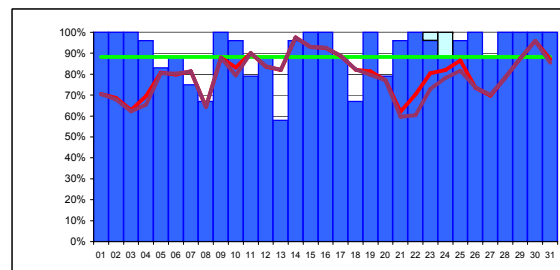
TRIUMF-LCG2 avail: 82% reliability: 82%



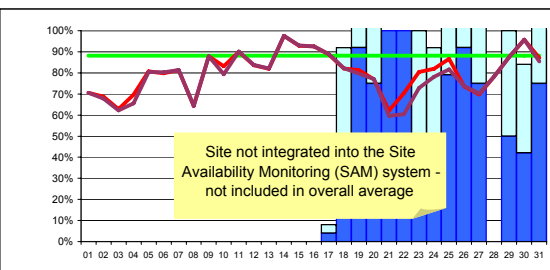
Taiwan-LCG2 avail: 92% reliability: 91%



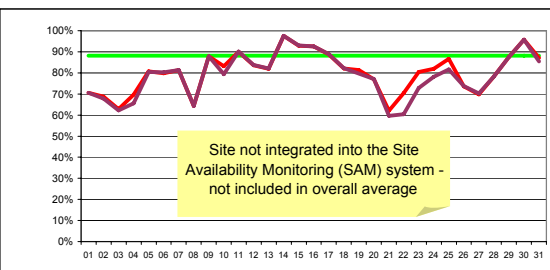
USCMS-FNAL-WC1 avail: 56% reliability: 66%



PIC avail: 91% reliability: 91%



BNL avail: 30% reliability: 31%



NDGF avail: n/a reliability: n/a

Site not integrated into the Site Availability Monitoring (SAM) system - not included in overall average

Site not integrated into the Site Availability Monitoring (SAM) system - not included in overall average



Site Reliability and Availability

October 2006

Colour coding limits: \geq TARGET: 88%

\geq 90% OF TARGET: 79%

WLCG Tier-1s + CERN

Data from SAM monitoring. Site reliability and availability as agreed in WLCG MB on 11 July 2006 (scheduled interruptions are excluded when calculating reliability)

The VO used for the tests was being changed during September from dTeam to OPS. This month only the best result each day for either of these two VOs is used.

OPS VO is used when the cell has a yellow background.

Reliability

Date		CERN-PROD	FZK-LCG2	IN2P3-CC	INFN-T1	RAL-LCG2	SARA-MATRIX	TRIUMF-LCG2	Taiwan-LCG2	USCMS-FNAL WC1	PIC	average reliability	target	BNL-LCG2	NDGF
01/10/2006	1	100%	0%	100%	100%	17%	100%	96%	92%	0%	100%	71%	88%	0%	0%
02/10/2006	2	100%	0%	96%	83%	42%	100%	83%	83%	0%	100%	69%	88%	0%	0%
03/10/2006	3	100%	0%	100%	50%	37%	96%	58%	87%	0%	100%	63%	88%	0%	0%
04/10/2006	4	100%	42%	100%	42%	58%	100%	62%	96%	0%	96%	70%	88%	0%	0%
05/10/2006	5	100%	62%	79%	100%	71%	67%	54%	96%	96%	83%	81%	88%	0%	0%
06/10/2006	6	96%	54%	75%	100%	71%	54%	87%	87%	87%	87%	80%	88%	0%	0%
07/10/2006	7	83%	83%	83%	83%	83%	83%	83%	75%	83%	75%	81%	88%	0%	0%
08/10/2006	8	71%	71%	54%	71%	71%	67%	50%	54%	67%	67%	64%	88%	0%	0%
09/10/2006	9	100%	100%	83%	100%	100%	100%	0%	96%	100%	100%	88%	88%	0%	0%
10/10/2006	10	100%	87%	100%	100%	100%	100%	12%	37%	100%	96%	83%	88%	0%	0%
11/10/2006	11	100%	92%	96%	100%	92%	58%	100%	87%	96%	79%	90%	88%	0%	0%
12/10/2006	12	100%	79%	83%	100%	100%	50%	71%	87%	79%	87%	84%	88%	0%	0%
13/10/2006	13	100%	79%	100%	92%	87%	83%	67%	83%	71%	58%	82%	88%	0%	0%
14/10/2006	14	100%	100%	100%	100%	100%	100%	87%	100%	92%	96%	98%	88%	0%	0%
15/10/2006	15	100%	87%	75%	100%	100%	79%	92%	96%	100%	100%	93%	88%	0%	0%
16/10/2006	16	100%	87%	71%	100%	100%	71%	100%	100%	96%	100%	93%	88%	0%	0%
17/10/2006	17	100%	71%	96%	100%	100%	37%	100%	100%	96%	87%	89%	88%	4%	0%
18/10/2006	18	100%	67%	67%	75%	100%	100%	100%	83%	62%	67%	82%	88%	46%	0%
19/10/2006	19	100%	50%	37%	67%	92%	100%	100%	100%	67%	100%	81%	88%	92%	0%
20/10/2006	20	100%	67%	87%	0%	79%	100%	100%	100%	58%	79%	77%	88%	75%	0%
21/10/2006	21	100%	0%	100%	0%	0%	100%	100%	100%	25%	96%	62%	88%	100%	0%
22/10/2006	22	100%	0%	100%	0%	4%	100%	100%	100%	100%	100%	70%	88%	100%	0%
23/10/2006	23	100%	29%	100%	0%	100%	75%	100%	100%	100%	100%	80%	88%	50%	0%
24/10/2006	24	100%	37%	87%	0%	100%	100%	100%	96%	100%	100%	82%	88%	46%	0%
25/10/2006	25	100%	100%	100%	0%	100%	87%	100%	100%	83%	96%	87%	88%	79%	0%
26/10/2006	26	100%	33%	100%	0%	100%	83%	62%	100%	58%	100%	74%	88%	92%	0%
27/10/2006	27	100%	37%	87%	0%	100%	100%	87%	100%	0%	87%	70%	88%	75%	0%
28/10/2006	28	100%	100%	100%	8%	75%	100%	100%	100%	0%	100%	78%	88%	0%	0%
29/10/2006	29	100%	100%	100%	100%	75%	100%	100%	100%	0%	100%	88%	88%	50%	0%
30/10/2006	30	100%	100%	100%	100%	100%	100%	100%	100%	58%	100%	96%	88%	42%	0%
31/10/2006	31	96%	92%	100%	100%	33%	50%	100%	100%	100%	100%	87%	88%	75%	0%
Average reliability		98%	64%	89%	62%	79%	85%	82%	91%	66%	91%	81%	88%	31%	0%



Site Reliability and Availability

October 2006

Colour coding limits: \geq TARGET: 88%

\geq 90% OF TARGET: 79%

WLCG Tier-1s + CERN

Data from SAM monitoring. Site reliability and availability as agreed in WLCG MB on 11 July 2006 (scheduled interruptions are excluded when calculating reliability)

The VO used for the tests was being changed during September from dTeam to OPS. This month only the best result each day for either of these two VOs is used.

OPS VO is used when the cell has a yellow background.

Availability

Date		CERN-PROD	FZK-LCG2	IN2P3-CC	INFN-T1	RAL-LCG2	SARA-MATRIX	TRIUMF-LCG2	Taiwan-LCG2	USCMS-FNAL WC1	PIC	average availability	target	BNL-LCG2	NDGF
01/10/2006	1	100%	0%	100%	100%	17%	100%	96%	92%	0%	100%	71%	88%	0%	0%
02/10/2006	2	100%	0%	88%	83%	42%	100%	83%	83%	0%	100%	68%	88%	0%	0%
03/10/2006	3	100%	0%	92%	50%	38%	96%	58%	88%	0%	100%	62%	88%	0%	0%
04/10/2006	4	100%	42%	58%	42%	58%	100%	63%	96%	0%	96%	66%	88%	0%	0%
05/10/2006	5	100%	63%	79%	100%	71%	67%	50%	96%	96%	83%	81%	88%	0%	0%
06/10/2006	6	96%	54%	75%	100%	71%	54%	88%	88%	88%	88%	80%	88%	0%	0%
07/10/2006	7	83%	83%	83%	83%	83%	83%	83%	75%	83%	75%	81%	88%	0%	0%
08/10/2006	8	71%	71%	54%	71%	71%	67%	50%	54%	67%	67%	64%	88%	0%	0%
09/10/2006	9	100%	100%	83%	100%	100%	100%	0%	96%	100%	100%	88%	88%	0%	0%
10/10/2006	10	100%	88%	79%	100%	100%	79%	13%	38%	100%	96%	79%	88%	0%	0%
11/10/2006	11	100%	92%	96%	100%	92%	58%	100%	88%	96%	79%	90%	88%	0%	0%
12/10/2006	12	100%	79%	83%	100%	100%	50%	71%	88%	79%	88%	84%	88%	0%	0%
13/10/2006	13	100%	79%	100%	92%	88%	83%	67%	83%	71%	58%	82%	88%	0%	0%
14/10/2006	14	100%	100%	100%	100%	100%	100%	88%	100%	92%	96%	98%	88%	0%	0%
15/10/2006	15	100%	88%	75%	100%	100%	79%	92%	96%	100%	100%	93%	88%	0%	0%
16/10/2006	16	100%	88%	71%	100%	100%	71%	100%	100%	96%	100%	93%	88%	0%	0%
17/10/2006	17	100%	71%	96%	100%	100%	38%	100%	100%	96%	88%	89%	88%	4%	0%
18/10/2006	18	100%	67%	67%	75%	100%	100%	100%	83%	63%	67%	82%	88%	46%	0%
19/10/2006	19	100%	50%	38%	67%	75%	100%	100%	100%	67%	100%	80%	88%	92%	0%
20/10/2006	20	100%	67%	88%	0%	79%	100%	100%	100%	58%	79%	77%	88%	75%	0%
21/10/2006	21	100%	0%	100%	0%	0%	100%	100%	100%	0%	96%	60%	88%	100%	0%
22/10/2006	22	100%	0%	100%	0%	4%	100%	100%	100%	0%	100%	60%	88%	100%	0%
23/10/2006	23	100%	29%	100%	0%	100%	75%	100%	100%	29%	96%	73%	88%	50%	0%
24/10/2006	24	100%	38%	88%	0%	100%	100%	100%	96%	71%	88%	78%	88%	46%	0%
25/10/2006	25	100%	50%	100%	0%	100%	88%	100%	100%	83%	96%	82%	88%	79%	0%
26/10/2006	26	100%	33%	100%	0%	100%	83%	63%	100%	58%	100%	74%	88%	92%	0%
27/10/2006	27	100%	38%	88%	0%	100%	100%	88%	100%	0%	88%	70%	88%	75%	0%
28/10/2006	28	100%	100%	100%	8%	75%	100%	100%	100%	0%	100%	78%	88%	0%	0%
29/10/2006	29	100%	100%	100%	100%	75%	100%	100%	100%	0%	100%	88%	88%	50%	0%
30/10/2006	30	100%	100%	100%	100%	100%	100%	100%	100%	58%	100%	96%	88%	42%	0%
31/10/2006	31	96%	92%	83%	100%	33%	50%	100%	100%	100%	100%	85%	88%	75%	0%
Average availability		98%	60%	86%	64%	77%	85%	82%	92%	56%	91%	79%	88%	30%	0%

Average of 8 best sites	
availability	83%
reliability	83%