



Training Outreach and Education

<http://www.nesc.ac.uk/training>



<http://www.ngs.ac.uk>

# Next Steps

PPARC

<http://www.pparc.ac.uk/>

eGEE

<http://www.eu-egee.org/>



# Policy for re-use

- This presentation can be re-used for academic purposes.
  - However if you do so then please let [training-support@nesc.ac.uk](mailto:training-support@nesc.ac.uk) know. We need to gather statistics of re-use: no. of events, number of people trained.
- Thank you!!



# Goal of talk

- Thus far the emphasis has been on what the NGS is, and how to use its core services.
- The goal of this talk is to ensure that intending users of the NGS know
  - relevant support services and procedures
  - The steps to be taken to join the NGS

# Overview

- What you can do next:
  1. Obtain a UK e-Science Certificate  
THEN
  2. Apply for access to the NGS
    - You join personally – not as a project
  3. Whilst these are being processed
    - Determine your options for running grid commands
    - Set up equivalent of `training-ui.nesc.ac.uk`?
    - Use `gsissh` on windows?
- More training?!



# How Do I Get A Certificate?

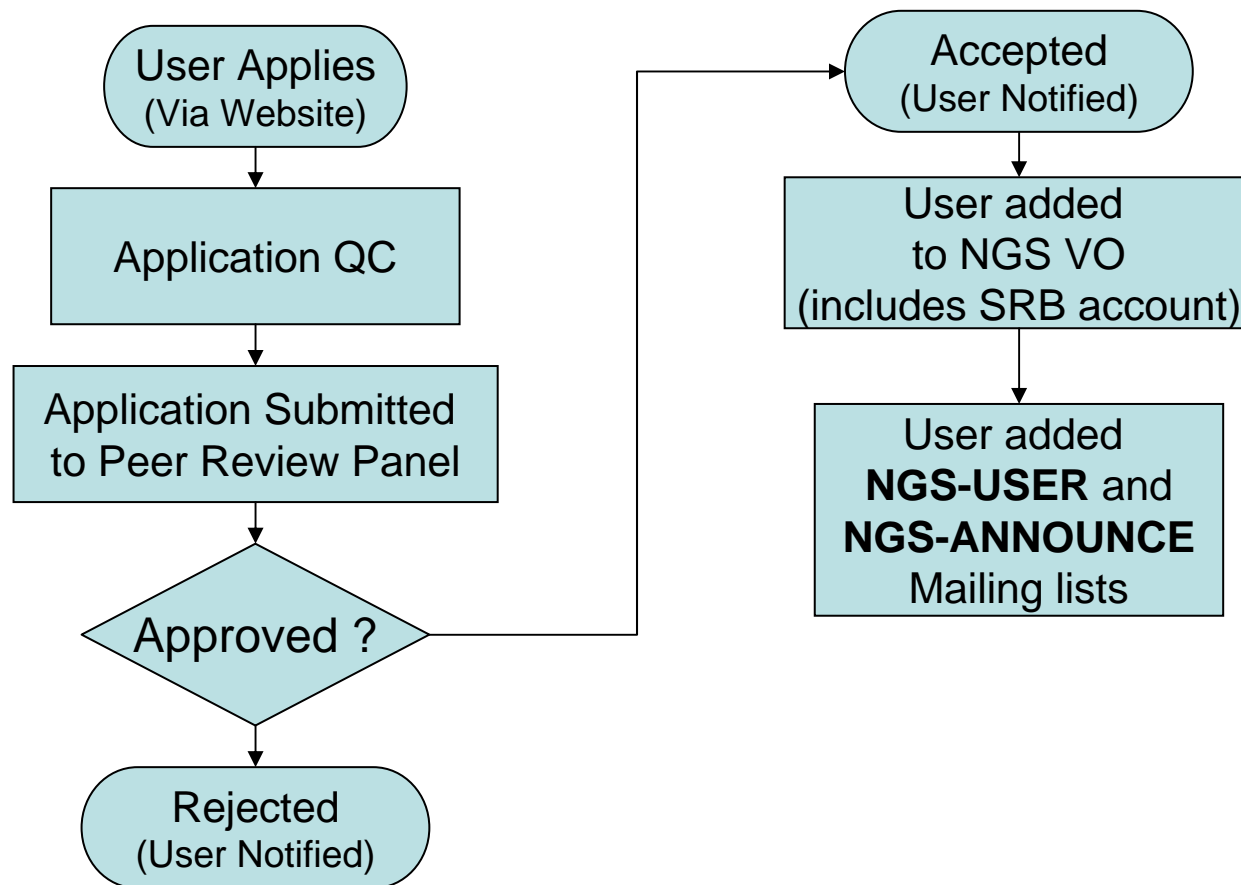
- You need a valid UK certificate before applying for an NGS account:
  - <https://ca.grid-support.ac.uk>, the UK Certificate Authority.
  - You will probably need to provide non-electronic proof of identity to your local representative of the CA.
    - For example: a photocopy of your passport.
    - See <http://www.grid-support.ac.uk/archive/ca/ralist.htm>
  - Ensure that you use the same browser (on the same computer) that you sent the request from to download your certificate.
  - Always keep this certificate secure.
- Follow instructions on UK CA pages
  - and also refer to yesterday's 2<sup>nd</sup> talk and 1<sup>st</sup> practical.



# Apply for access to the NGS

- Via [www.ngs.ac.uk/access](http://www.ngs.ac.uk/access)
- You need a UK e-science certificate before you apply
- Simple web form
  - Specify cpu time, storage you want

# User Registration (Process)





# Access to data services

- With your NGS account, you get
  - SRB account
- Can apply for an Oracle account





# Projects and VOs

- Project-based applications being dealt with case-by-case
- Want to host your data on NGS?
  - consider GridFTP, SRB, Oracle, or OGSA-DAI
  - NGS maintains infrastructure
  - you populate and manage data
- Want to use NGS resources to provision services, portals for a community of users?
  - next slide



# Providing services for a VO

- NGS resources can be used to provide a portal (or portlets) or other service for your community
- Deployment and security scenarios are negotiable
- NGS policies (core nodes):
  - your portal can present its own, or a delegated user's credential to NGS, but tasks should be traceable to initiating end-user
  - you should not run your own services in user space without prior agreement of NGS and hosting site
    - we need to know that services are secure, will not jeopardise operation of other NGS services, or consume too much precious resource on head nodes
- Talk to NGS



# Resource providers

Resource providers join the NGS by

- Defining level of service commitments
- Adopting NGS acceptable use and security policies
- Run compatible middleware
  - as defined by NGS Minimum Software Stack
  - and verified by compliance test suite
- Support monitoring and accounting

Two levels of membership

1. Affiliates run compatible stack, integrated support
2. Partners also contribute “significant resources”



# More training?

- Watch <http://www.nesc.ac.uk/training/events>
- Also <http://www.nesc.ac.uk/esi/esi.html>
- Digital Library: <http://egee.lib.ed.ac.uk/>
- February – Application Development on the NGS
- **TELL US WHAT YOU WANT !!!!**
  - In future versions of this course
  - In application developer courses
  - .....
  - Email: [training-support@nesc.ac.uk](mailto:training-support@nesc.ac.uk)