

WLCG Service Report

4 weeks Aug 18 - Sep 15

WLCG Management Board, 15th Sep 2015

Xavier Espinal
IT/DSS

Operations coordination (1/2)

- Disabling write operations via RFIO v2 (RFIO protocol decommission ~2017)
- Argus service at CERN **successfully migrated** to filer (31/08)
- **Issues with VMs** in Tier-0 infrastructure also reported by CMS. Being followed-up within the Job efficiency TF
- LHCb and ALICE are trying to integrate job submission to the **HTCondorCE** instance at CERN
- ActiveMQ brokers at CERN broadcasting data collected by perfSONARs to experiments
 - OSG is enabling the data publication from the ITB (integration testbed) collector service

Operations coordination (2/2)

- **Slapd crashing** after upgrading to SLC6.7/CentOS 6.7 which installs a new version of openLDAP (suggests sites not to upgrade)
- **dCache vulnerability** affecting gsi and kerberos ftp doors. All versions of dCache prior to 2.13.7 affected.
 - The baselines for dCache have been updated and sites are suggested to upgrade to the latest versions containing the fix
- EGI will move to RFC proxies as of October or November
- **OSG perfSONAR** dashboard (<http://psmad.grid.iu.edu>), which is already connected to the OSG datastore, is already showing up to date content

Selected items from operations (1/4)

- ALICE:
 - High activity during the period, peaking at 90k jobs
 - Issues writing/reading to/from CASTOR. Dedicated meeting among online, offline and storage experts. Situation improved and work in progress
- CMS:
 - P5 to EOS transfer slowness: main causes understood and improvement measured together with CMS DAQ team
 - Third party copy issues after CASTOR upgrade (issue identified and fixed)
 - Reached ~120k parallel CMS jobs in the Global Pool

Selected items from operations (2/4)

- ATLAS:
 - Full computing capacity peak reached: 200k slots
 - Pre-staging issues on CASTOR via SRM: long bulk requests adding latencies
- LHCb:
 - Validation and data quality verification of 25ns data finished
 - Interface for HTCondor submission ongoing

Selected items from operations (3/4)

- Batch and Grid:
 - New CE based on HTCondor CE (ce503) broadcasting in BDII
 - ARGUS: intermittent very high load and occasional crashes due to excessive amounts of bad requests from a few VOBOXes
- Network: Europe-US transatlantic links (reported by M.Ernst)
 - 3 out of 4 circuits across the Atlantic provided by ESnet are either out of service or impaired, 1x100G link left (Friday 11th/Sep)
 - No connectivity issues or bandwidth limitations regarding both LHCOPN and LHCONE traffic
 - Further backup links still available (e.g. via GEANT)

Selected items from operations (4/4)

- CNAF:
 - **Fire** causing problems with one electrical supply line (27/08), almost at 100% again last week (07/09)
- TRIUMF:
 - Site-wide **power outage** due to extreme windstorm (30/08)

Service incident reports

- CNAF preparing the SIR for the fire incident

Significant events

- The new WLCG Operations Portal is now online:

<http://wlcg-ops.web.cern.ch/>



WLCG
Worldwide LHC Computing Grid

WLCG Operations Portal

Home

Sys Admins

Experiments

Ops Coordination

News

Articles

Welcome

In this portal you will find documentation and information about WLCG Operation activities for:

- Sys Admins
- Experiments
- Developers
- Operation coordination, including TFs and WGs

Latest articles

[Join the LHC@home volunteer computing project](#)

Maria Dimou on Wed, 08/12/2015 - 18:18

Search this site

Search

USEFUL LINKS

[REBUS](#)

[GGUS](#)

[GOCDB](#)

[MyOSG](#)

[Accounting Portal](#)

[EGI Operations](#)

[OSG Operations](#)

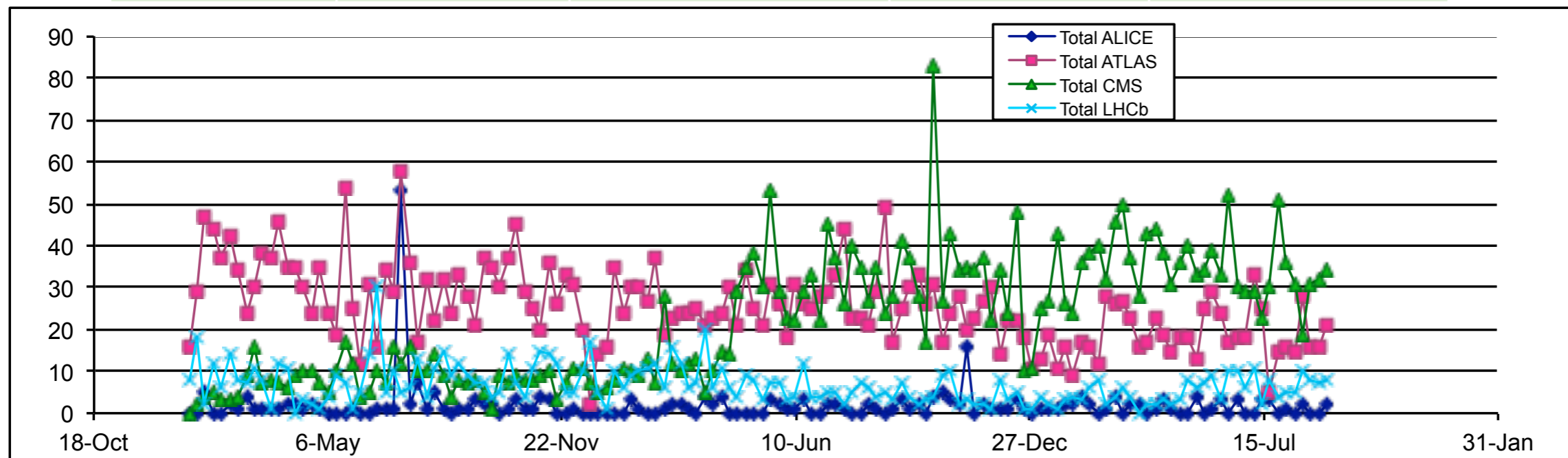
[WLCG project](#)

[Contact us](#)

GGUS summary (by Pablo Saiz)

4 weeks 17/08-13/09

VO	User	Team	Alarm	Total
ALICE	0	4	0	4
ATLAS	11	70	0	81
CMS	116	0	0	116
LHCb	0	33	0	33
Totals	127	107	0	234



Significant events

- No release
- Next release scheduled for 30th September
- No alarms

Availability reports

- The official Availability and Reliability archive is maintained by the WLCG Project Office

<https://espace.cern.ch/WLCG-document-repository/ReliabilityAvailability>

- Re-computations might change some results