



# WLCG Service Report

3 weeks, Oct 27 – Nov 17

WLCG Management Board, 17<sup>th</sup> Nov 2015

Luca Mascetti  
CERN

v1.4 (updated Dec 1)

# Operations Coordination highlights

<https://twiki.cern.ch/twiki/bin/view/LCG/WLCGOpsCoordination>

- CERN and OSG developed a BDII info provider for HTCondor CE
  - **already running** at CERN
  - other sites running HTCondor CE **can benefit** from it.
- perfSONAR collector, datastore, publisher and dashboard now in **production**
  - Stable operations

# Selected items from Operations (1)

<https://twiki.cern.ch/twiki/bin/view/LCG/WLCGOperationsMeetings>

- **Critical Vulnerability** broadcasted by EGI SVG
  - Affecting software using the **NSS security library** (e.g. libcurl)
  - <https://wiki.egi.eu/wiki/SVG:Advisory-SVG-2015-CVE-2015-7183>
- **BNL Incident with FTS3**
  - caused by *bringOnline* function
  - **Next release will prevent this issue**
- **IN2P3 Major network incident**
  - affected the traffic in and out IN2P3
  - **Problem fixed after 1h**
- **KISTI running with half of the job slots until Feb/2016**
  - to provide heavy ion reconstruction jobs with **more memory**

# Selected items from Operations (2)

<https://twiki.cern.ch/twiki/bin/view/LCG/WLCGOperationsMeetings>

- CERN
  - Argus **issue with central banning**
    - **Affected all CERN job submission and authorization**
  - HTCondor **pool in production** from Nov 2
    - ARC CE decommissioning started
  - LSF **upgraded** on Nov 4
    - **Fixed** scalability problem found in the previous attempt
  - CASTOR and EOS **upgraded** during MD slot

# Selected items from Operations (3)

<https://twiki.cern.ch/twiki/bin/view/LCG/WLCGOperationsMeetings>

- **Very high activity** thanks to inclusion of **HLT farms** and other **opportunistic** resources
  - More than **400k** active cores reached, up to a peak of **~450k**
- **ALICE**
  - Affected by Argus **banning incident**
    - CERN got largely **drained**
  - **Problem accessing CASTOR**
    - Huge amount of transfers caused by big staging request in the wrong pool
    - **Fixed** on the ALICE side and thanks to the CASTOR team
- **ATLAS**
  - Normal data taking and grid production activities

# Selected items from Operations (4)

<https://twiki.cern.ch/twiki/bin/view/LCG/WLCGOperationsMeetings>

- CMS
  - Production system running full and smoothly
    - Good resource utilization, sustained 120k cores busy
  - Transfer **failure** on EOS
    - **Fixed** internally in CMS (quota setting issue)
  - AAA Global redirector **not seeing** European redirectors
    - **Workaround in place** to fix the issue
- LHCb
  - Problems with FTS and EOS SRM (Bestman2) **fixed**
  - **Issues** with dCache in IN2P3 and SARA

# Service Incident Reports

<https://twiki.cern.ch/twiki/bin/view/LCG/WLCGServiceIncidents>

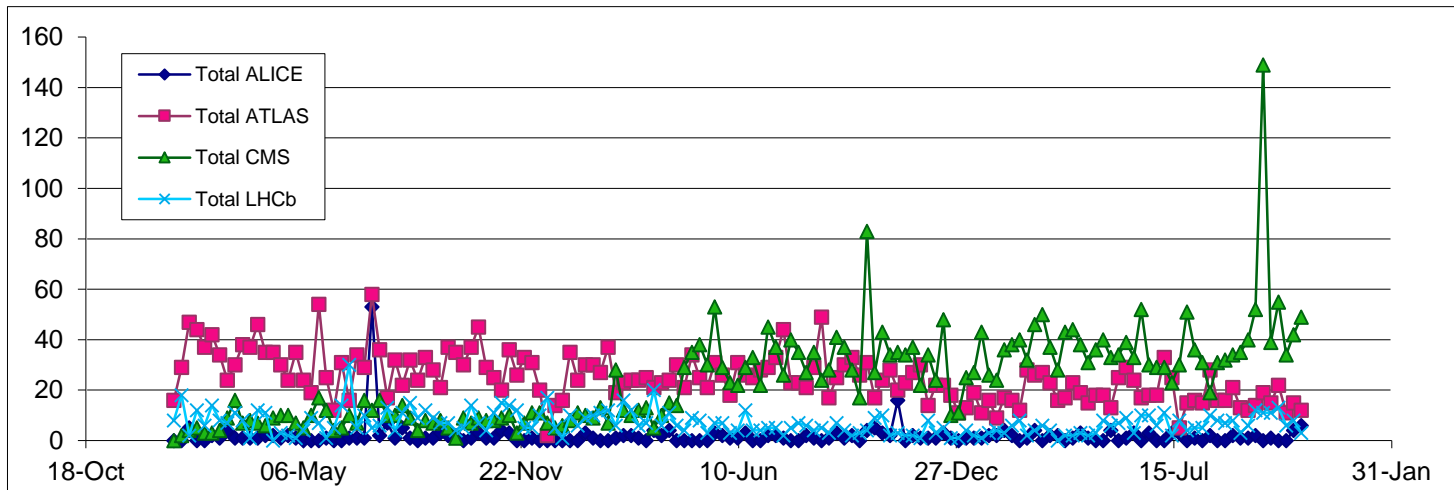
- **Published SIR on IN2P3 network incident**

<https://twiki.cern.ch/twiki/pub/LCG/WLCGServiceIncidents/SIR-IN2P3-CC-network-2015-11-03-v3.pdf>

# GGUS summary (3 weeks 26/10/15 -15/11/15)

## by Pablo Saiz

VO	User	Team	Alarm	Total
ALICE	7	3	0	10
ATLAS	5	33	0	38
CMS	125	0	0	125
LHCb	1	13	3	17
Totals	138	49	3	190





# Significant events

- Release on the 28<sup>th</sup> of October
  - Notifications for GGUS downtimes
  - Internal security patches
  - New version of mail parser
- Next release scheduled for 9<sup>th</sup> December
- 3 LHCb alarms for CERN:
  - FTS (27/Oct), Argus(29/Oct), EOS (30/Oct)