

Preparation for TS2

Plamen Hopchev

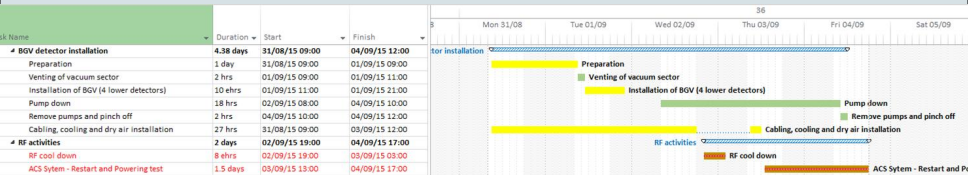
CERN BE-BI-BL

BGV meeting #63

18 Aug 2015

- Access to the BGV area will possible only from **Mon morning (31st Aug)** to **Thu noon (3rd Sept)**
 - Because of the “RF conditioning” planned for Thu noon – Fri evening
- Coordination discussion took place yesterday (17th Aug)
 - Notes from this meeting can be found on this Indico page (<https://indico.cern.ch/event/438072/>)
 - Discussed the various constraints
 - Agreed the schedule for the VSC intervention
 - The venting will be finished by Tue 9 am (earlier option exists)
 - Pump down to start on Wed morning or afternoon
 - Friday pm – remove equipment
- **The BGV IMPACT 67453 was approved**
 - If you plan to participate, please check that you are in the list, and that your access rights are OK

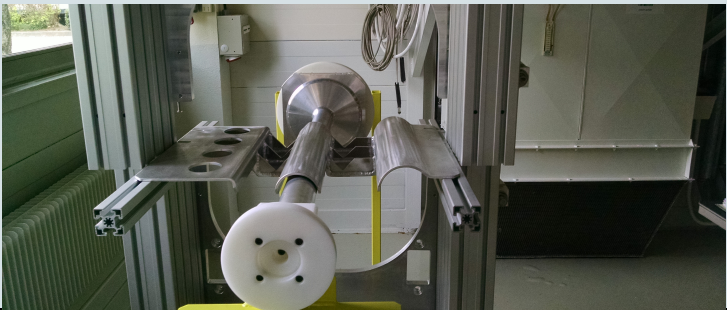
The BGV schedule from Marzia (v1)



- We should prepare a more detailed plan – per day and with the intervening people
 - The essential steps are given in the minutes of the last BGV meeting
- Foresee time for dismounting and re-mounting equipment, e.g. Downstream scintillators, Chamber cooling fans, ...

Points for discussion

- **What is the goal of this installation phase?**
Be ready for commissioning? Perform beam measurements later this year?
⇒ Implies that all crates and cables need to be in place
 - LV, HV, Temp. monitoring, ...
- **It is essential that a detector expert from EPFL is present in the tunnel when we install and connect cables**
- **Do we install the horizontal rails and a plate on top of them?**



- **Mounting test**

- Ongoing (Paolo)

- **Metrology of 2MAs**

- Upstream Bottom 2MA: modules 07–4L and 08–4L
- Downstream Bottom 2MA: modules 02 and 03
- Sphere positions ready (match of the independent calculations by Valdir and Plamen)
- **To-do:**
 - Position of Detector plate to be checked
 - Detailed procedure/protocol to be prepared
 - Measure the sides of the det. plate wrt. its targets (when adjusting in the tunnel will use an inclinometer attached to one side)
- When do we bring the first 2MA to the metrology lab? Who will take part?

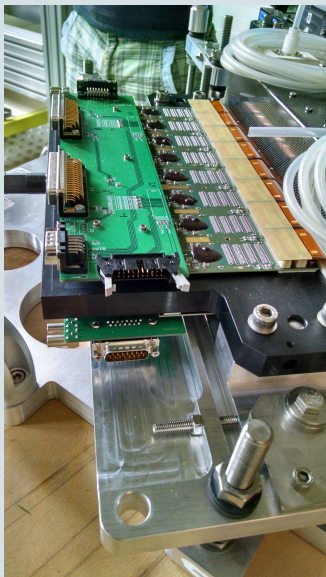
- **Survey alignment in the tunnel**

- Procedure discussed last week
- The measurements are scheduled for Tue evening (Survey are busy on Wednesday)

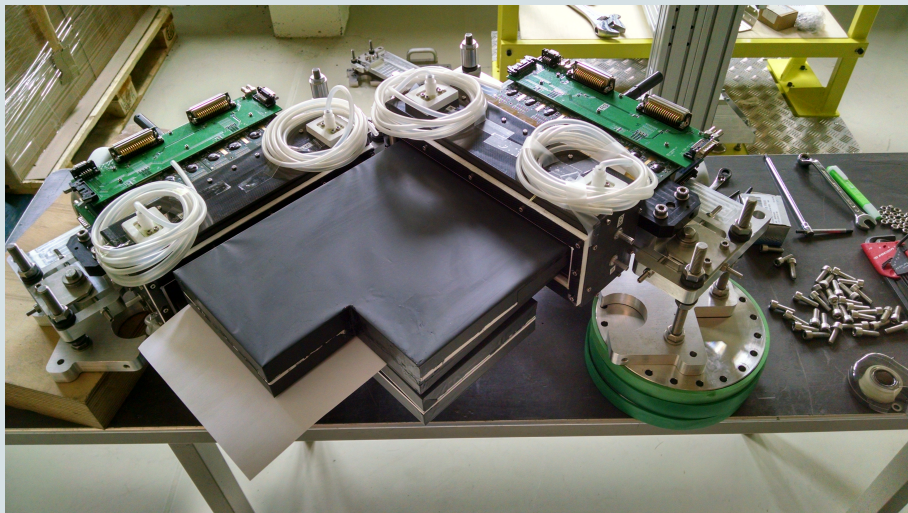
- Transport, cables, ...
- Status of sub-systems
- Organize a discussion with Raymond about the various procedures

1 out of 4 Temp. connectors have a clamp (left image).

OK?



First 2MA!



First 2MA!

