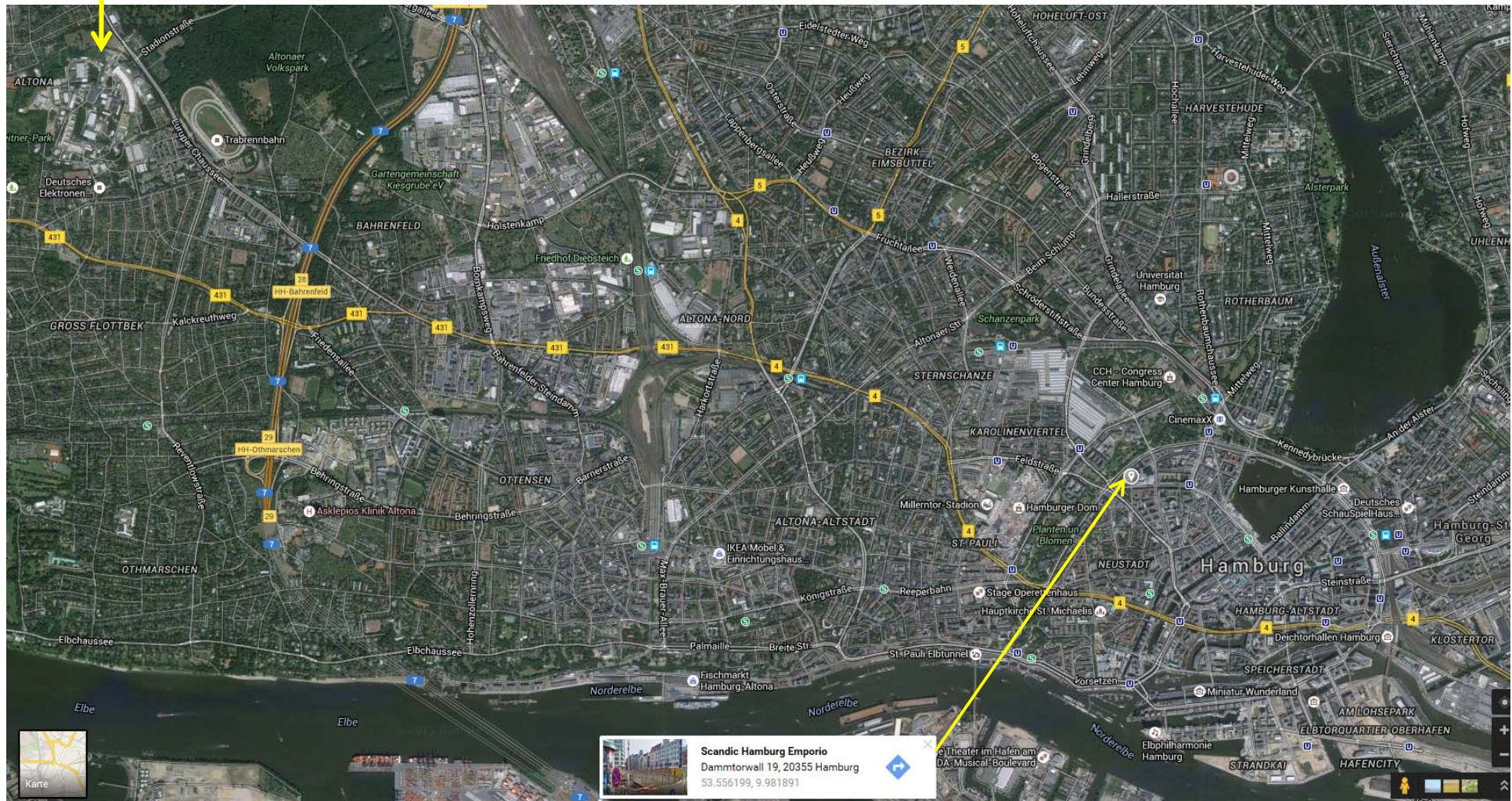


Welcome to Hamburg



Local Organizers:  
Christel Oevermann  
Ruth Mundt  
Kay Wittenburg



# Beside CAS

**Water light concerts**  
 May-August  
 10.00pm daily



Download the Hamburg Tourism App on [Google Play](#) or on the [Apple App Store](#)



**Eiscream Livotto**  
 11:00 – 20:00  
 Often open end...



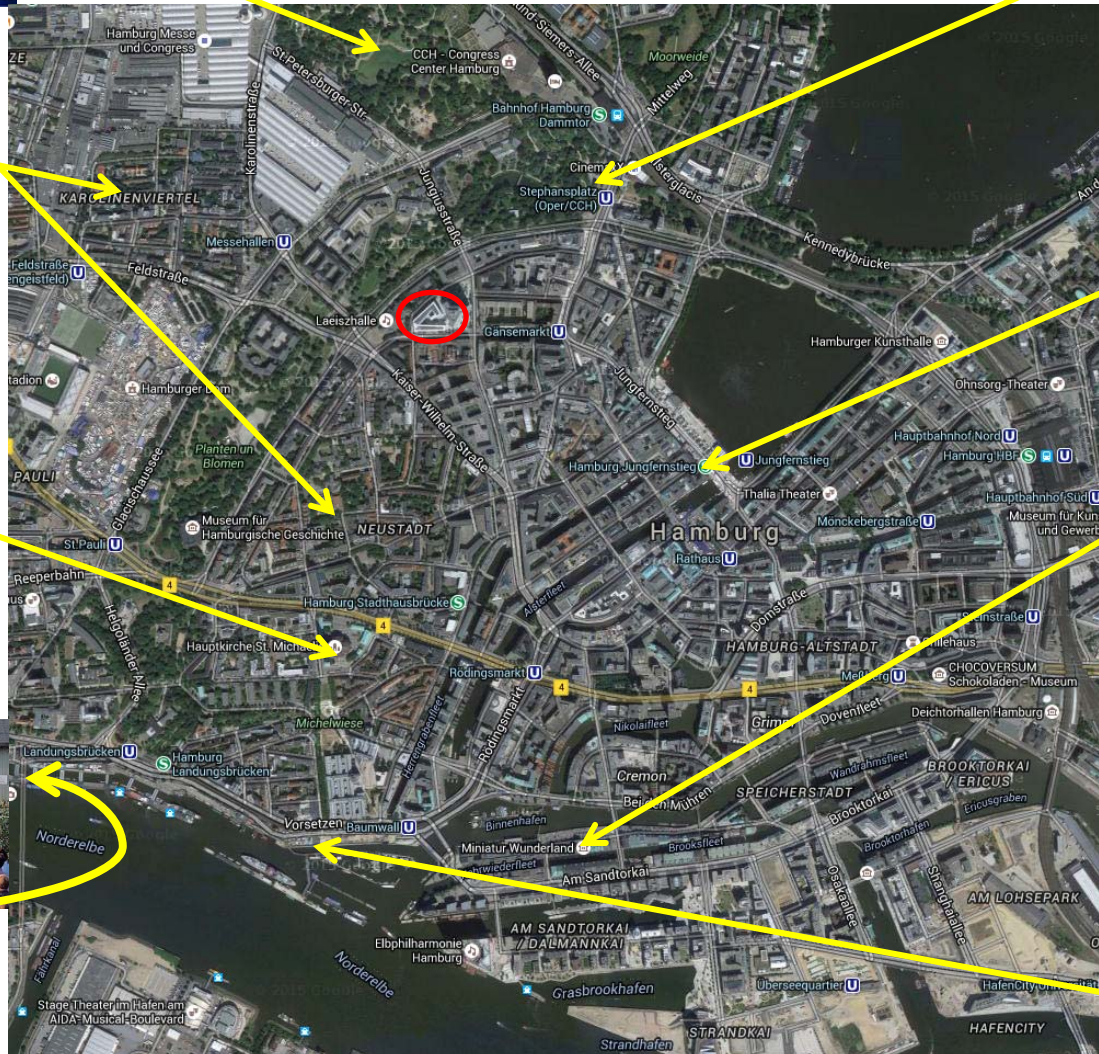
**Großneumarkt and Karolinenviertel :**  
 Restaurants, Bars, Pubs, almost 24h



**Church: Michel:**  
 9:00-19:30



**The fish market:**  
 every Sunday  
 5.00am – 9.30 a.m.



Town Hall, Alster and shopping



**Miniatur Wunderland and Harbour boat trip on Sunday!!!**



On Sunday June 5th

Free day, but:

- DESY sponsors a 2h Harbour Boat Trip on Sunday Morning at 11:00
  - Meeting at 10:00 (sharp!) in the Hotel (30 min walk) and 10:45 at Ticketshop of Barkassen-Meyer/ Entrance Überseebrücke (Maps at CAS Office)
  - Please sign up if you want to come, by Thursday lunchtime
  - Lunch package from the hotel



- The CAS dinner in the Miniatur Wunderland
  - Buffet dinner in “Wartelounge” from 18:00 to 20:00
  - **Exclusive** visit (guide) of Miniature Wunderland from 20:15 to 22:15
  - Meeting at 17:45 at the entrance (**Adresse:** Kehrwieder 2-4 / Block D) and, for those who are thirsty, in the brewery "Gröninger" (Address: *Willy-Brandt Straße 47, in the basement*) from 16:00 – 17:15 (Maps at CAS Office)



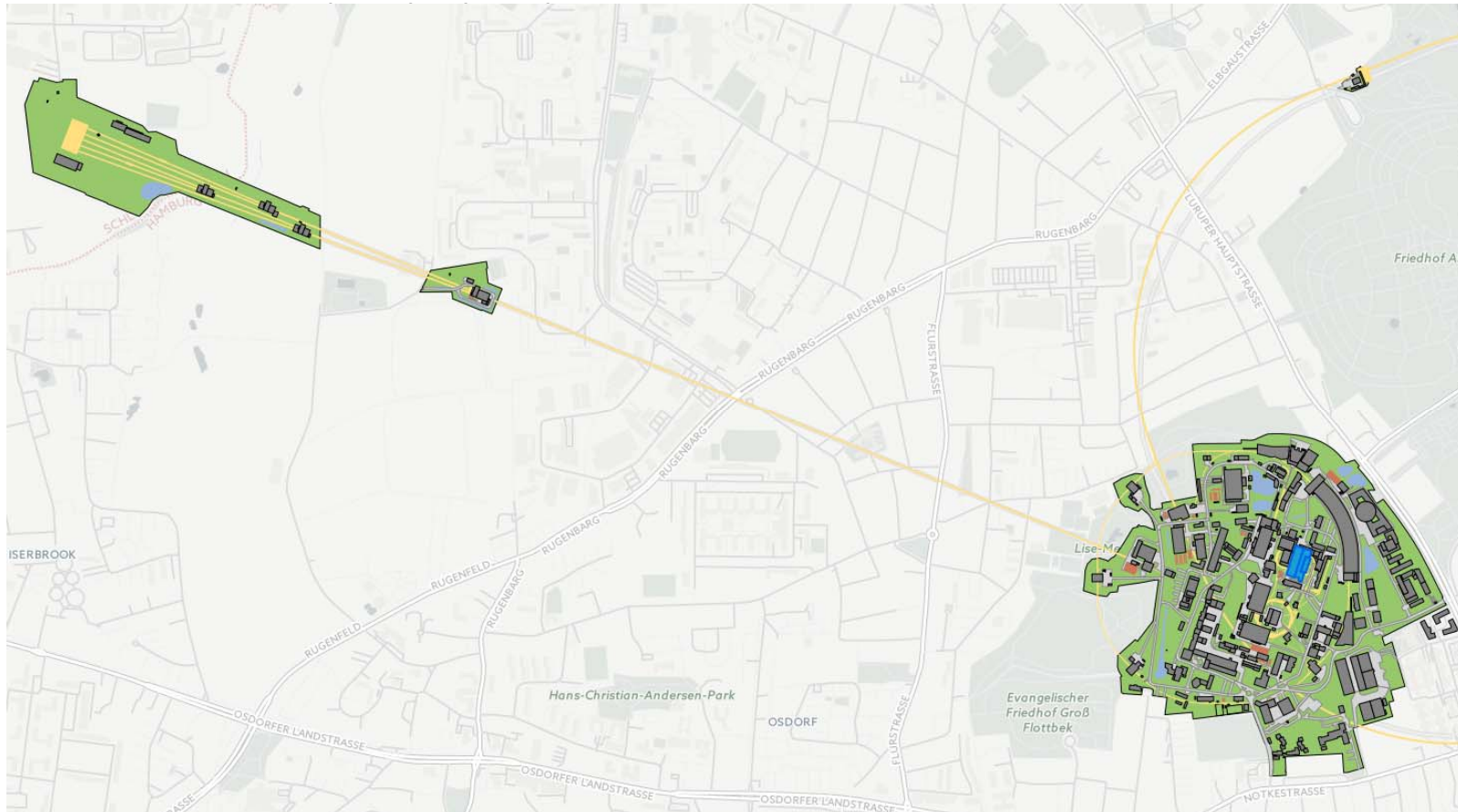
Discover in the  
largest model  
railway system in  
the world





## Day at DESY Tuesday June 7th

- Bus leave 8:00 h (sharp!) – **local students, please do not use this bus!**
- Morning lectures at DESY starting at 9:00
- Lunch (and coffee) sponsored by DESY
- Afternoon visit of:  
XFEL, Laser Labs, Module Test Hall, Undulator Hall, FLASH Experiments, ...
- Return at 18h (bus leaves at DESY at ca. 17:30)





## Day at DESY June 7th

- Bus leave 8:00 h (sharp!) – **local students, please do not use this bus!**
- Morning lectures at DESY starting at 9:00
- Lunch (and coffee) sponsored by DESY
- Afternoon visit of:  
XFEL, Laser Labs, Module Test Hall, Undulator Hall, FLASH Experiments, ...
- Return at 18h (bus will leave DESY at ca. 17:30)
- Dinner as usual at the hotel

